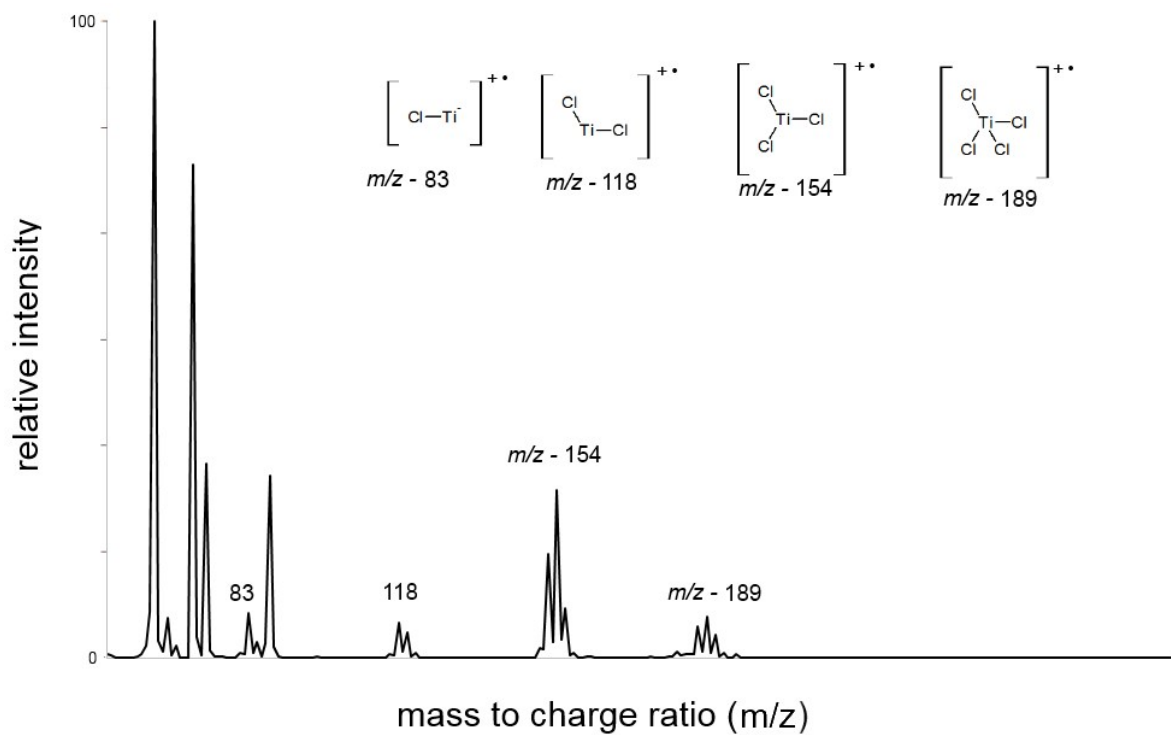


ESI – 1

Mass spectrum of deposition with $0.4 \text{ L min}^{-1} \text{TiCl}_4$ and 0.4 L min^{-1} ethyl acetate at 300°C , showing only peaks for TiCl_4 and ethyl acetate precursors with no visible intermediates.



ESI – 2

SEM image of TiO₂ thin film deposited from 0.4 L min⁻¹ TiCl₄ and 0.4 L min⁻¹ ethyl acetate at 300 °C.

