

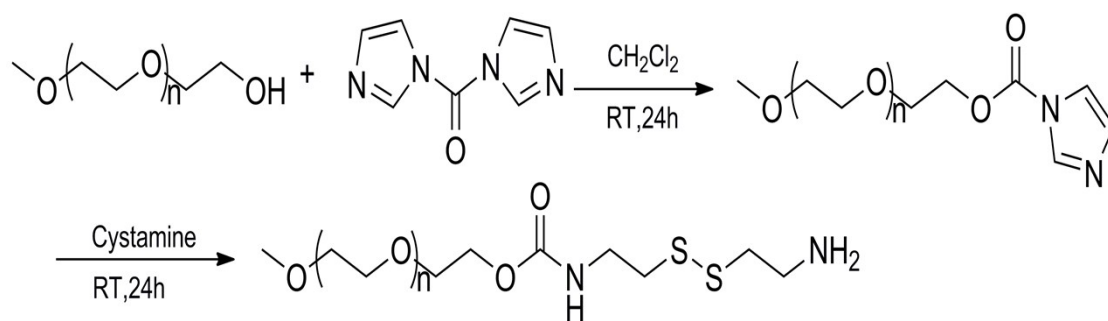
Supporting Information

Polyaspartamide-Based Multi-responsive Micelle with Sheddable Shell for Antitumor Drug Delivery

Lei Wang, Jie Luan, Lina Du, Le Li, Jia Liu, Zhilan Liu*, Renxi Zhuo

Key Laboratory of Biomedical Polymers of Ministry of Education and Department of
Chemistry, Wuhan University, Wuhan 430072, China

*Corresponding author. E-mail: (liuzl@whu.edu.cn)



Scheme S1. Synthesis of mPEG-SS-NH₂.

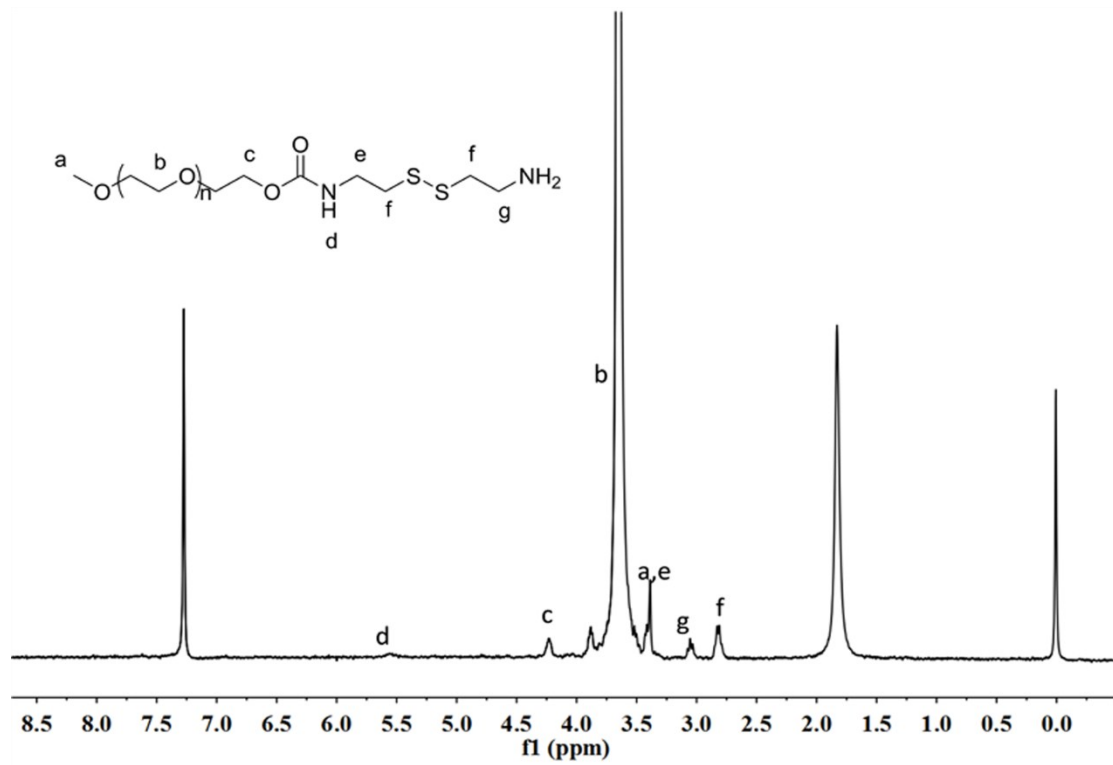


Figure S1. ¹H NMR(CDCl₃) spectrum of mPEG-SS-NH₂.

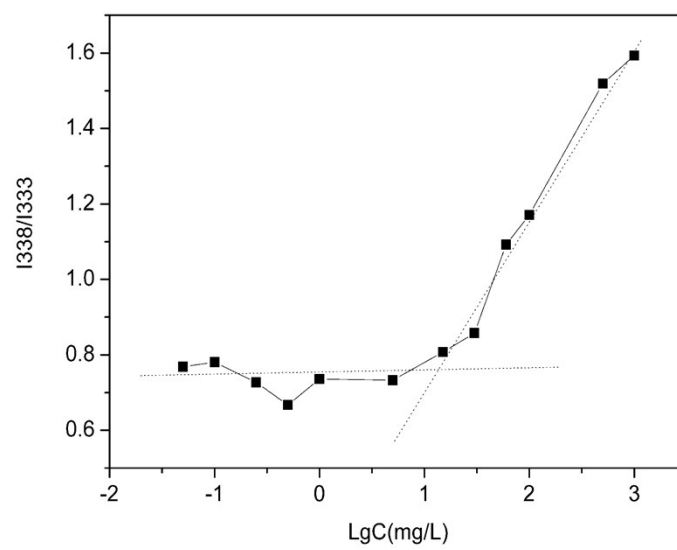


Figure S2. Determination of CMC for the polymer micelle.

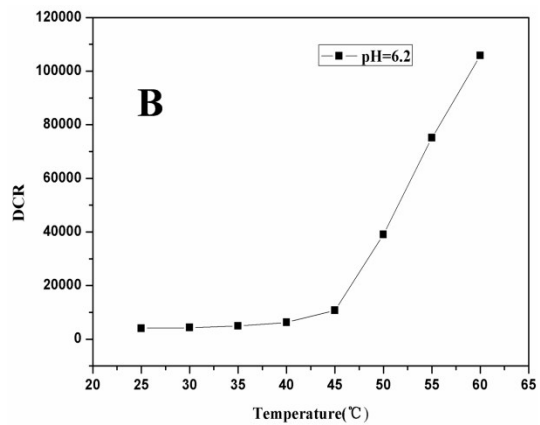
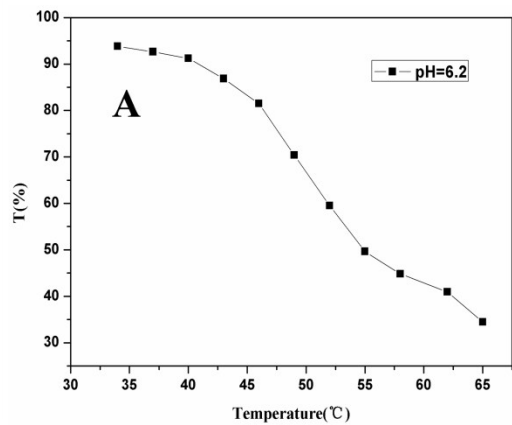


Figure S3. Transmittance and Intensity of scattered light of polymer solution