

Supplementary materials

SiO₂ nanoparticles cause depression and anxiety-like behavior in adult zebrafish

Contents

Supplementary Figures

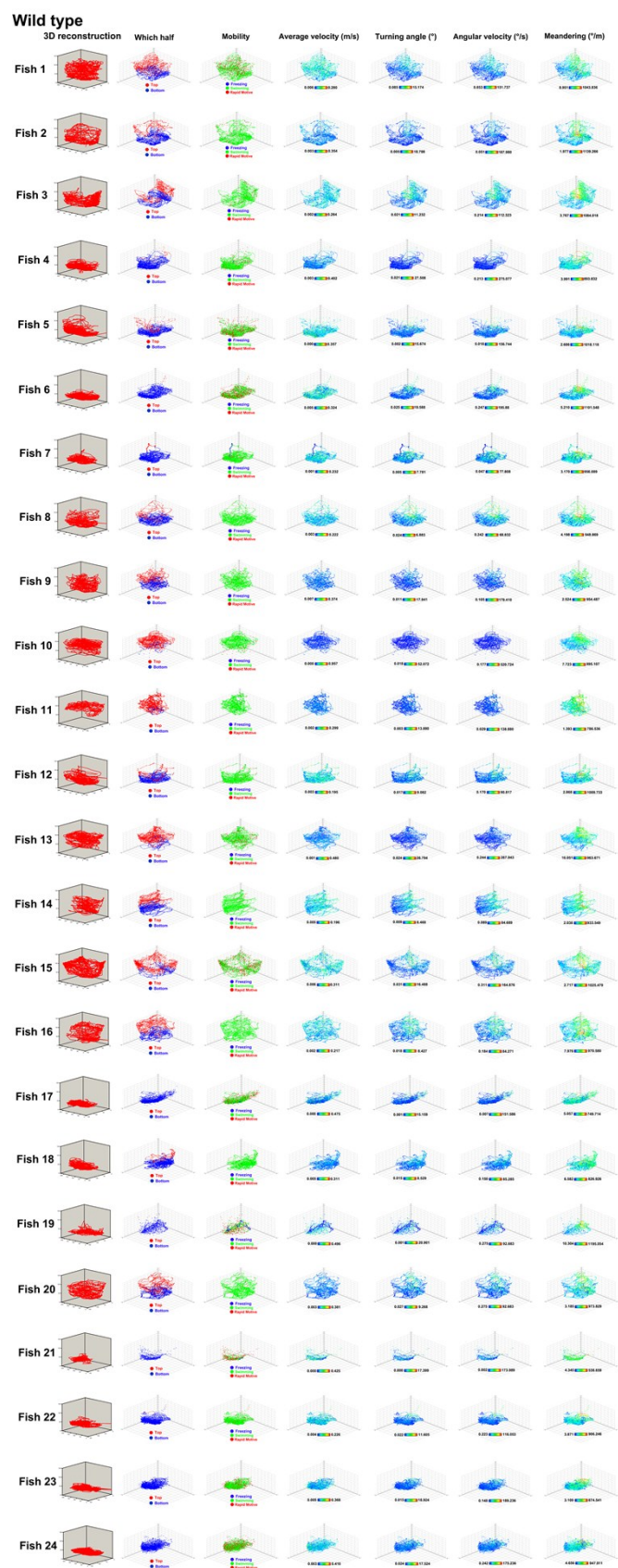


Figure S1 3D reconstruction and 3D spatiotemporal reconstruction of swimming path of wild

type zebrafish

Silica 100 $\mu\text{g}/\text{mL}$

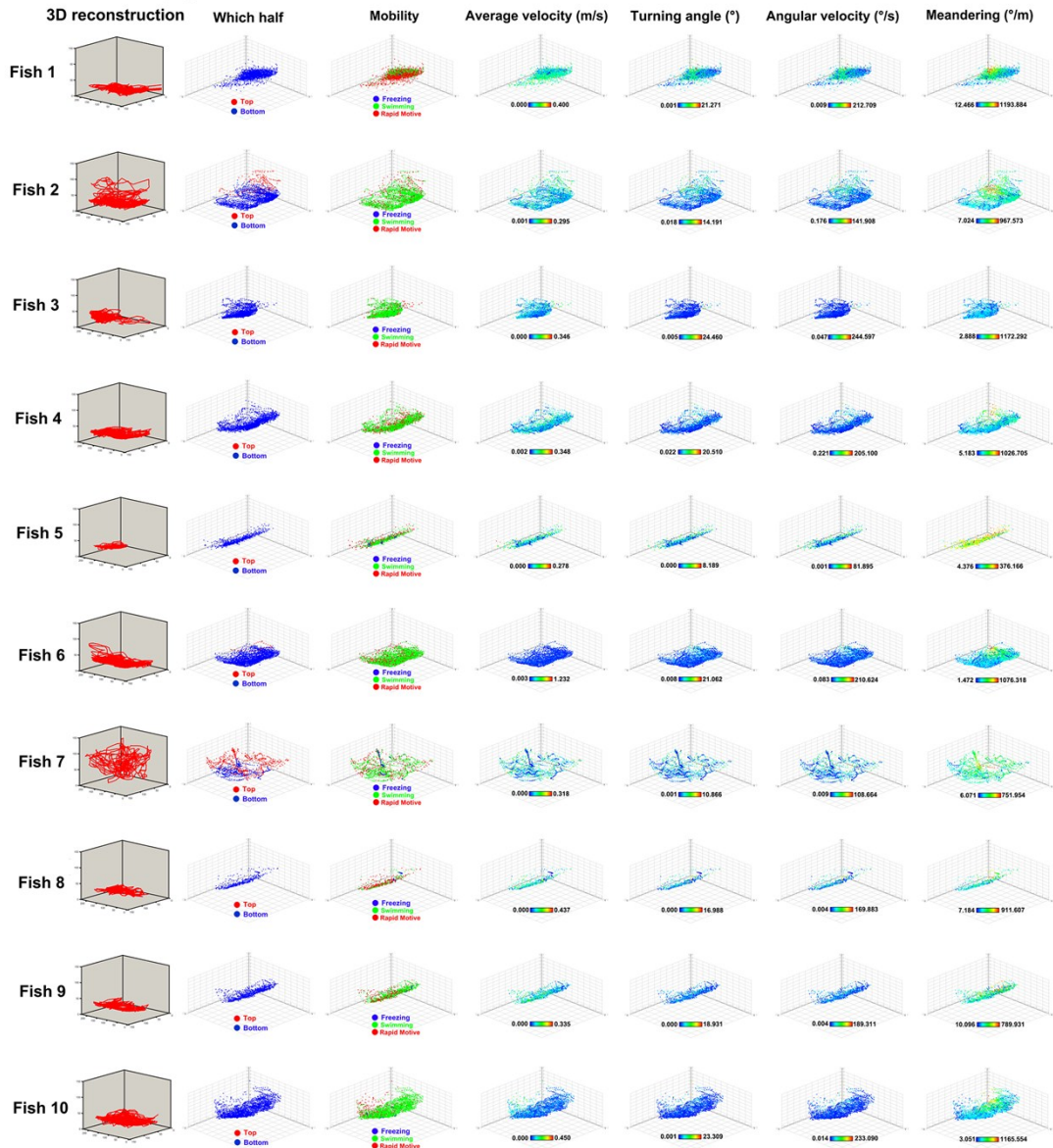


Figure S2 3D reconstruction and 3D spatiotemporal reconstruction of swimming path of zebrafish exposed to 100 $\mu\text{g}/\text{mL}$ nao-silica

Silica 1000 $\mu\text{g/mL}$

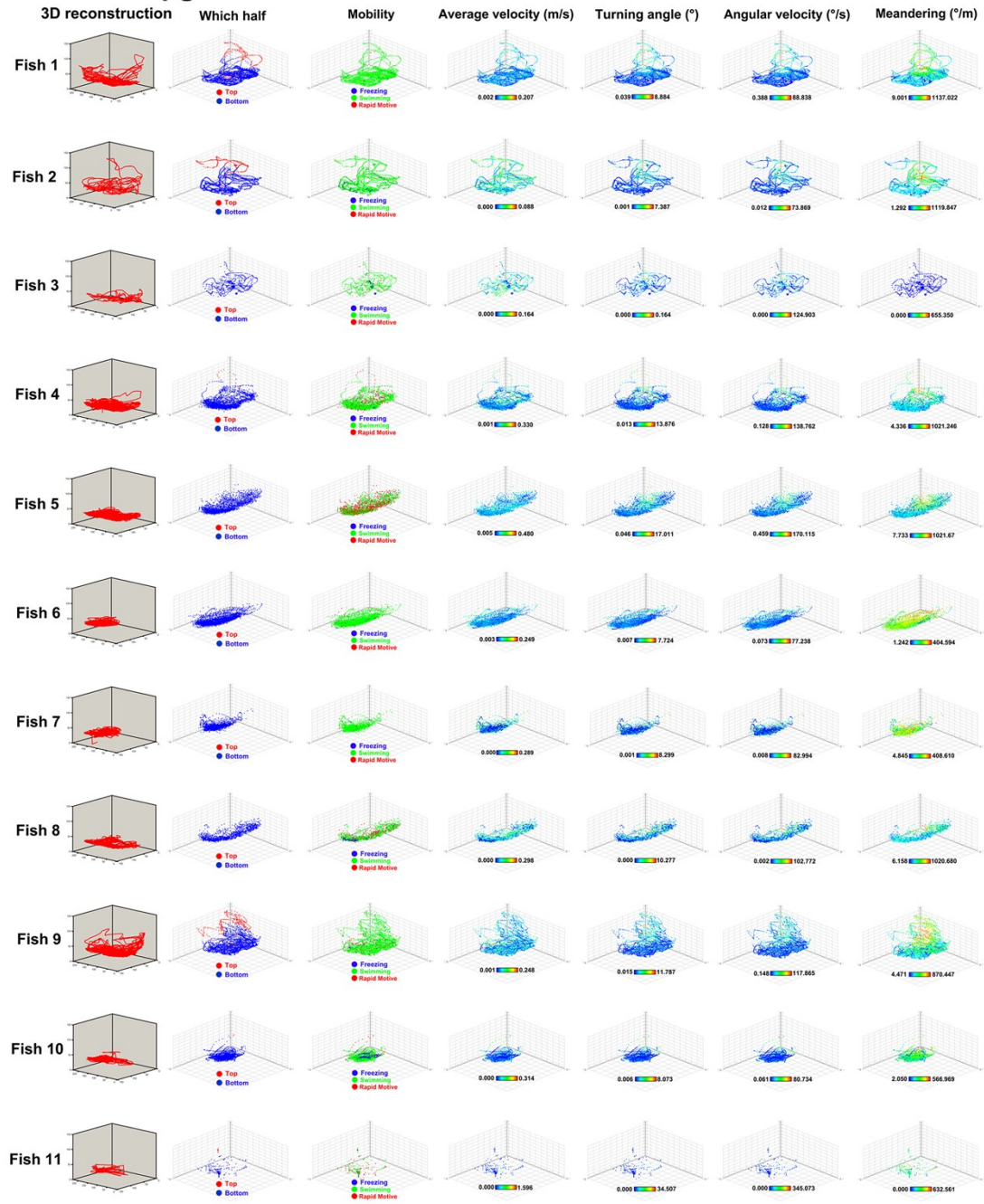


Figure S3 3D reconstruction and 3D spatiotemporal reconstruction of swimming path of zebrafish exposed to 1000 $\mu\text{g/mL}$ nao-silica

Reserpine 1 $\mu\text{g/mL}$

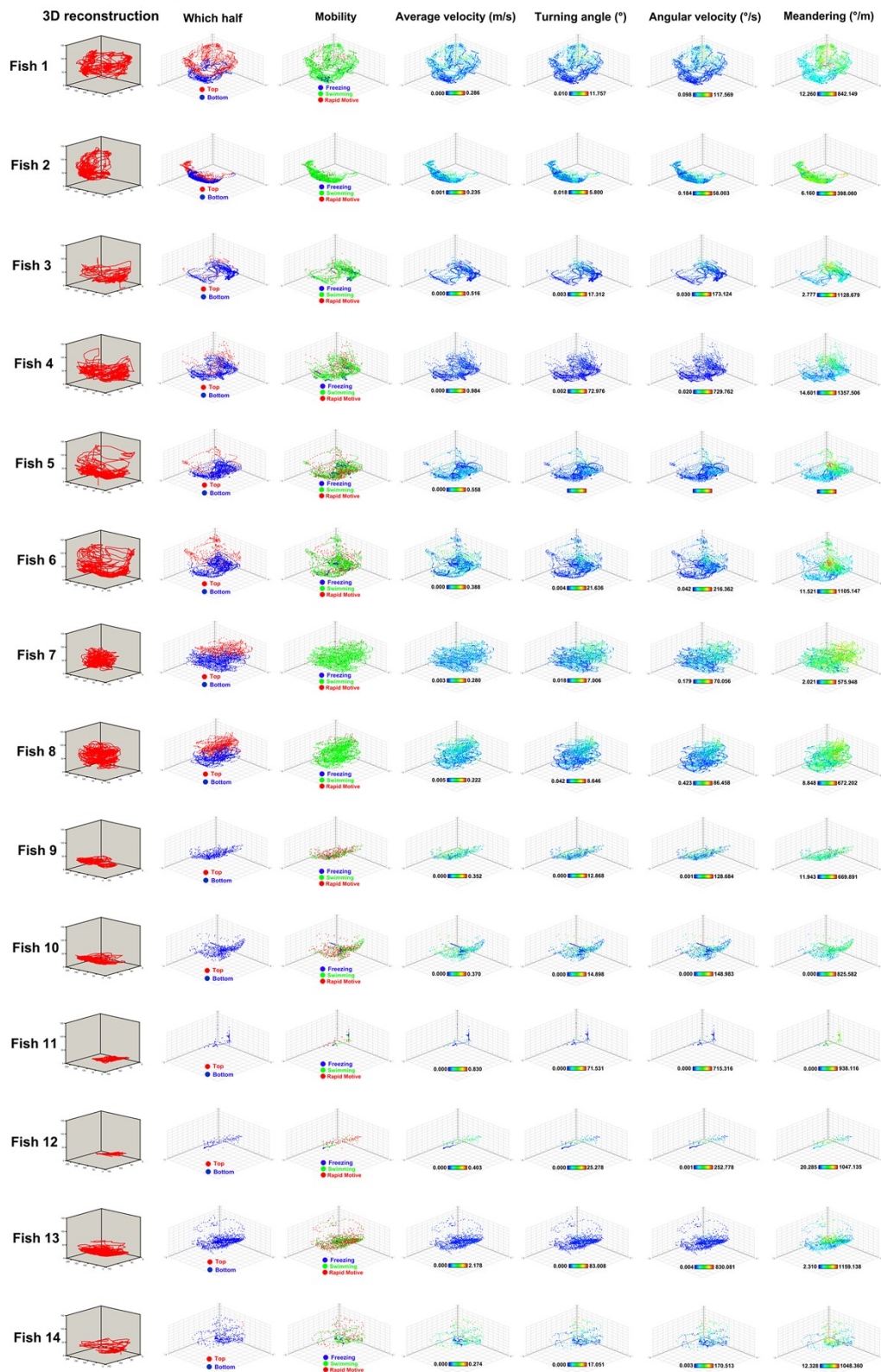


Figure S4 3D reconstruction and 3D spatiotemporal reconstruction of swimming path of zebrafish exposed to 1 $\mu\text{g/mL}$ reserpine

Reserpine 10 $\mu\text{g/mL}$

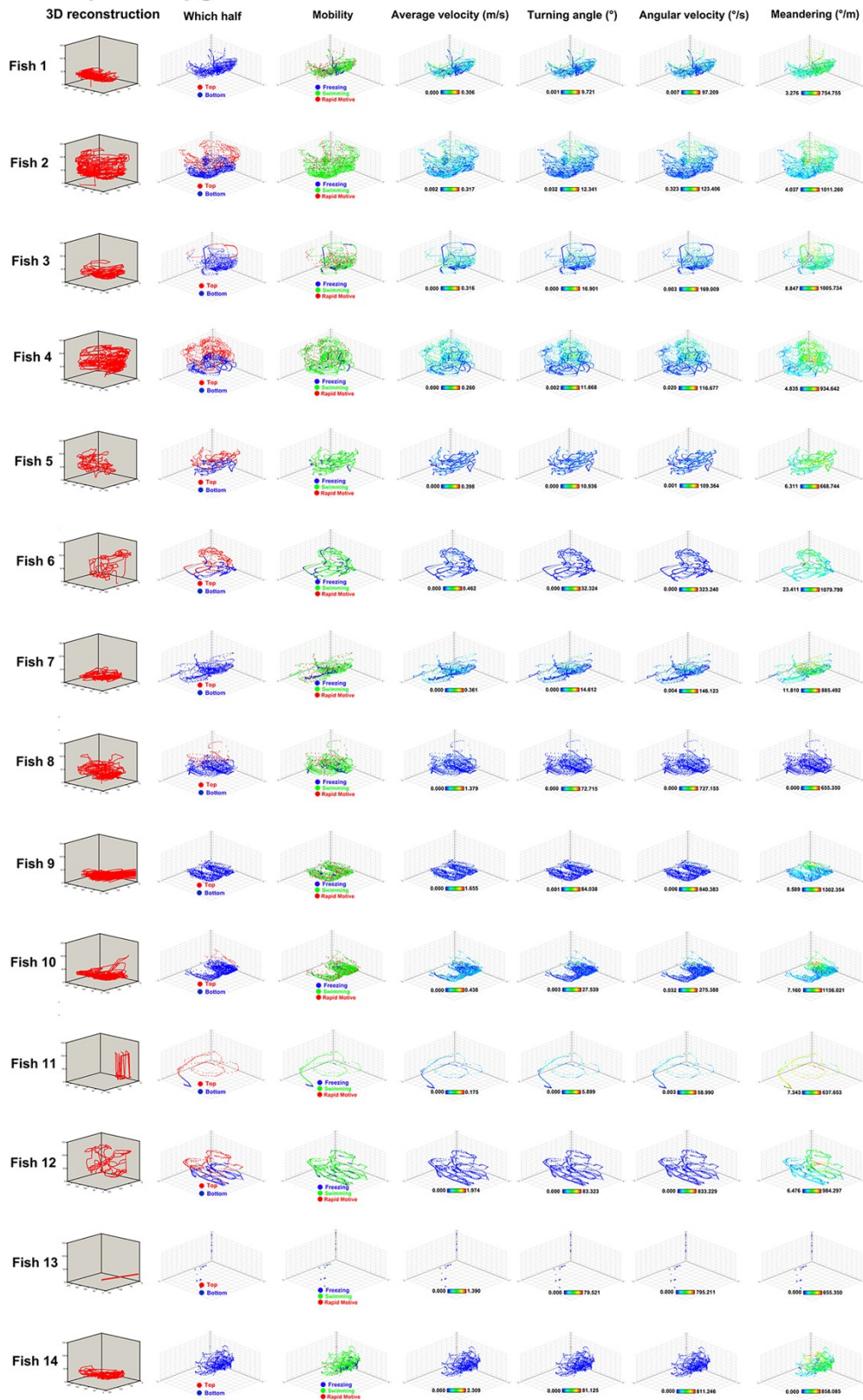


Figure S5 3D reconstruction and 3D spatiotemporal 3D reconstruction of swimming path of zebrafish exposed to 10 $\mu\text{g/mL}$ reserpine

Wild type

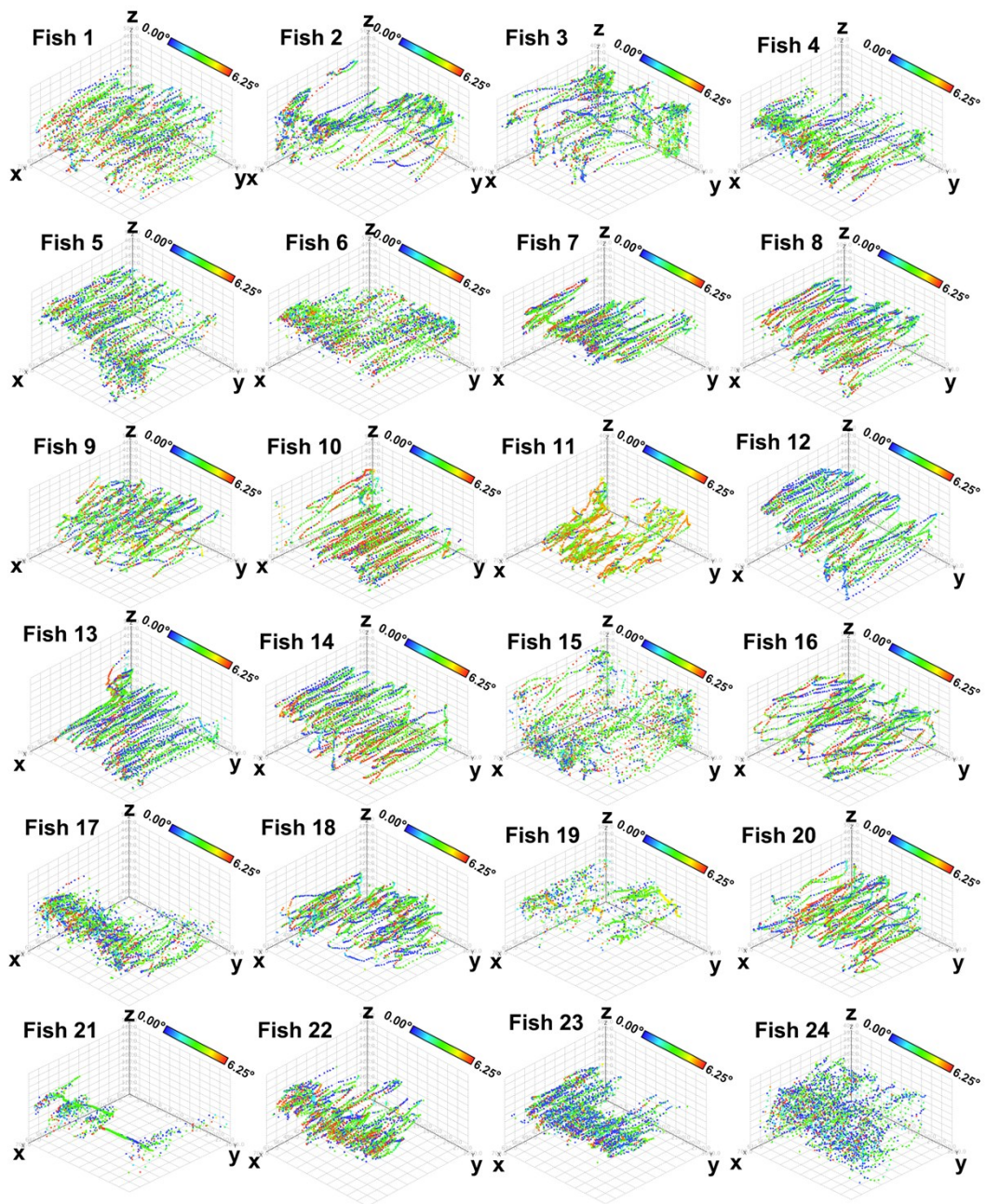


Figure S6 3D spatiotemporal reconstruction of instantaneous “droop tail angle” at swimming path of zebrafish exposed to 100 μ g/mL nano-silica.

Silica-100 $\mu\text{g}/\text{mL}$

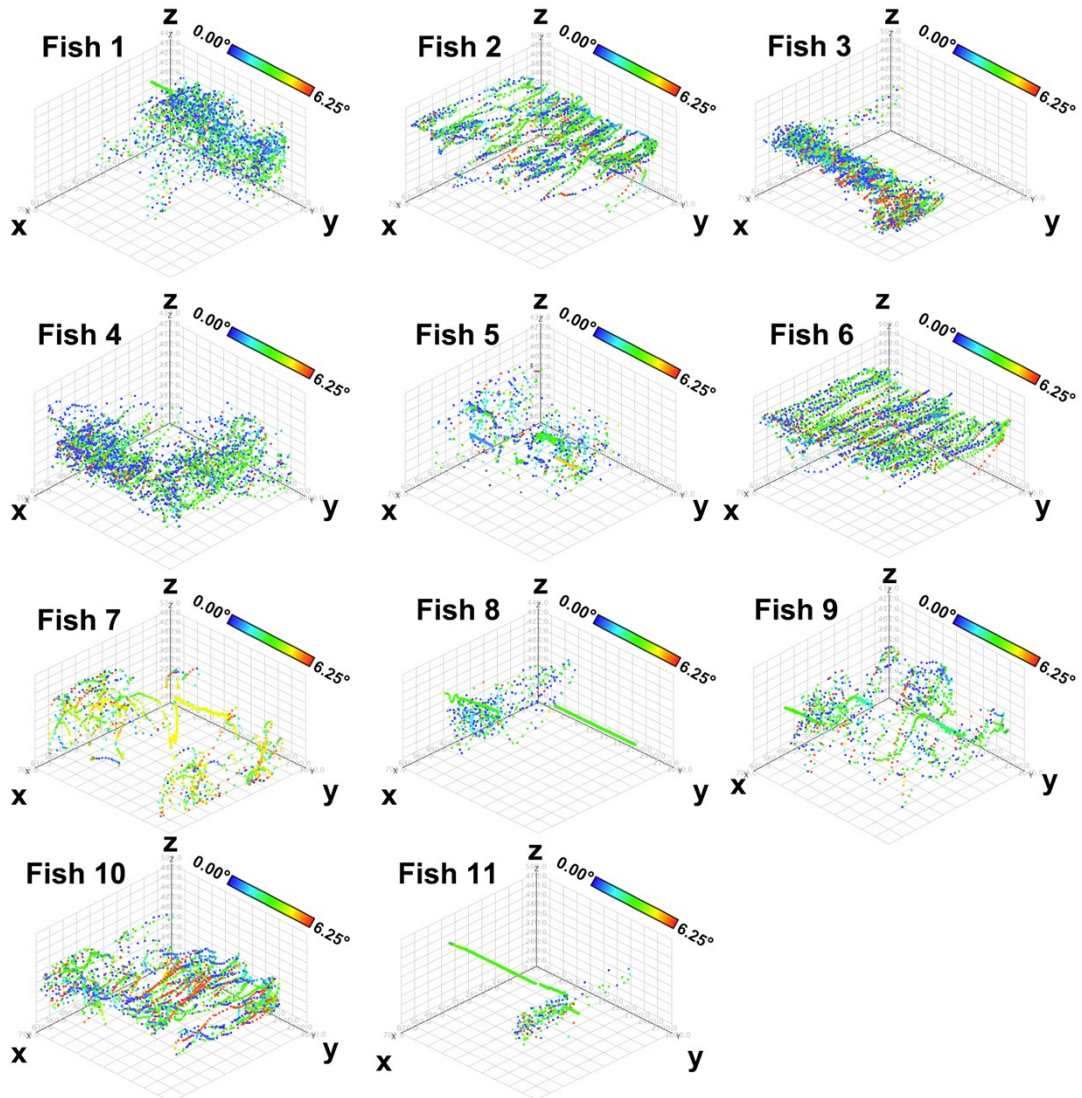


Figure S7 3D spatiotemporal reconstruction of instantaneous “droop tail angle” at swimming path of zebrafish exposed to 1000 $\mu\text{g}/\text{mL}$ nano-silica

Silica-1000 $\mu\text{g}/\text{mL}$

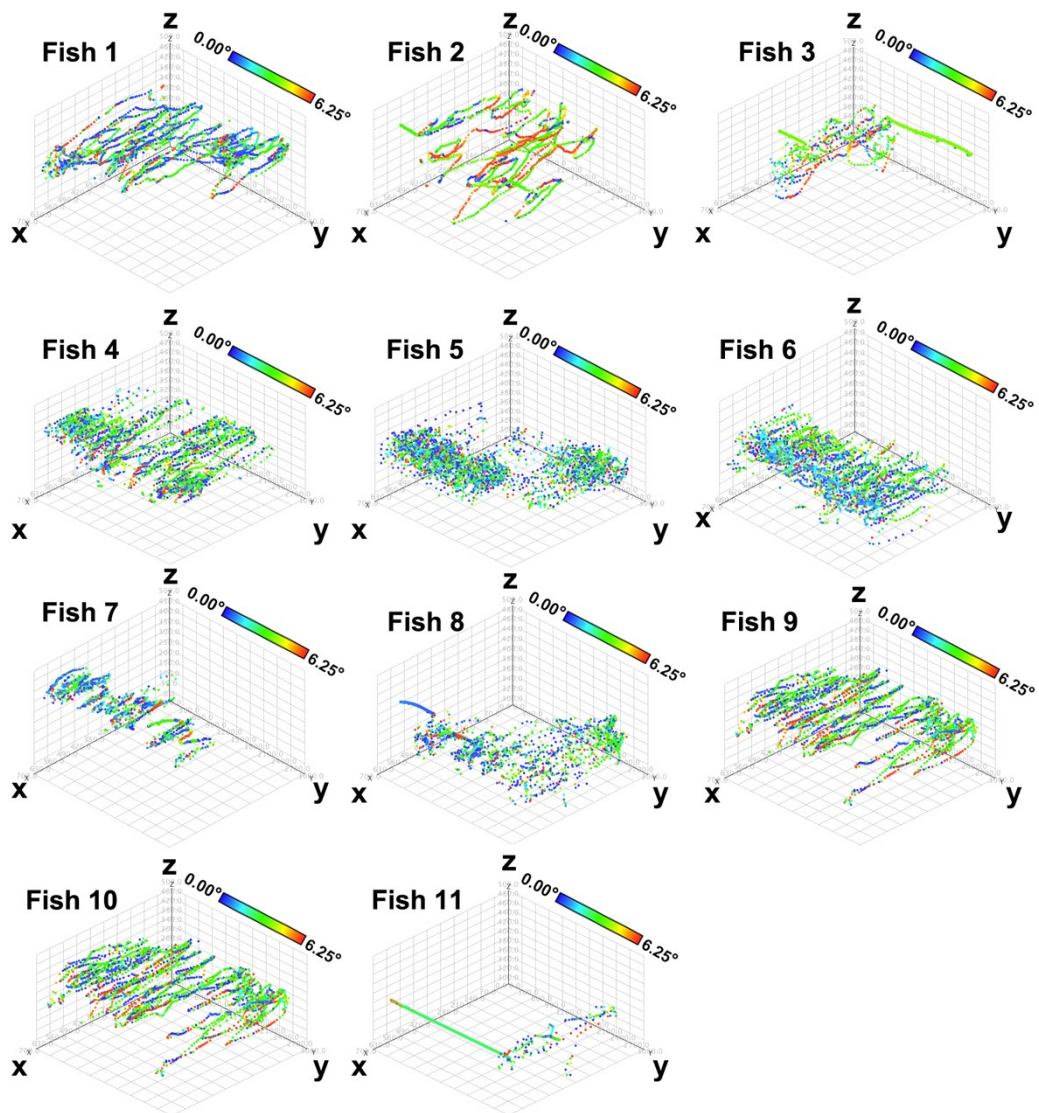


Figure S8 3D spatiotemporal reconstruction of instantaneous “droop tail angle” at swimming path of zebrafish exposed to 1000 $\mu\text{g}/\text{mL}$ nano-silica

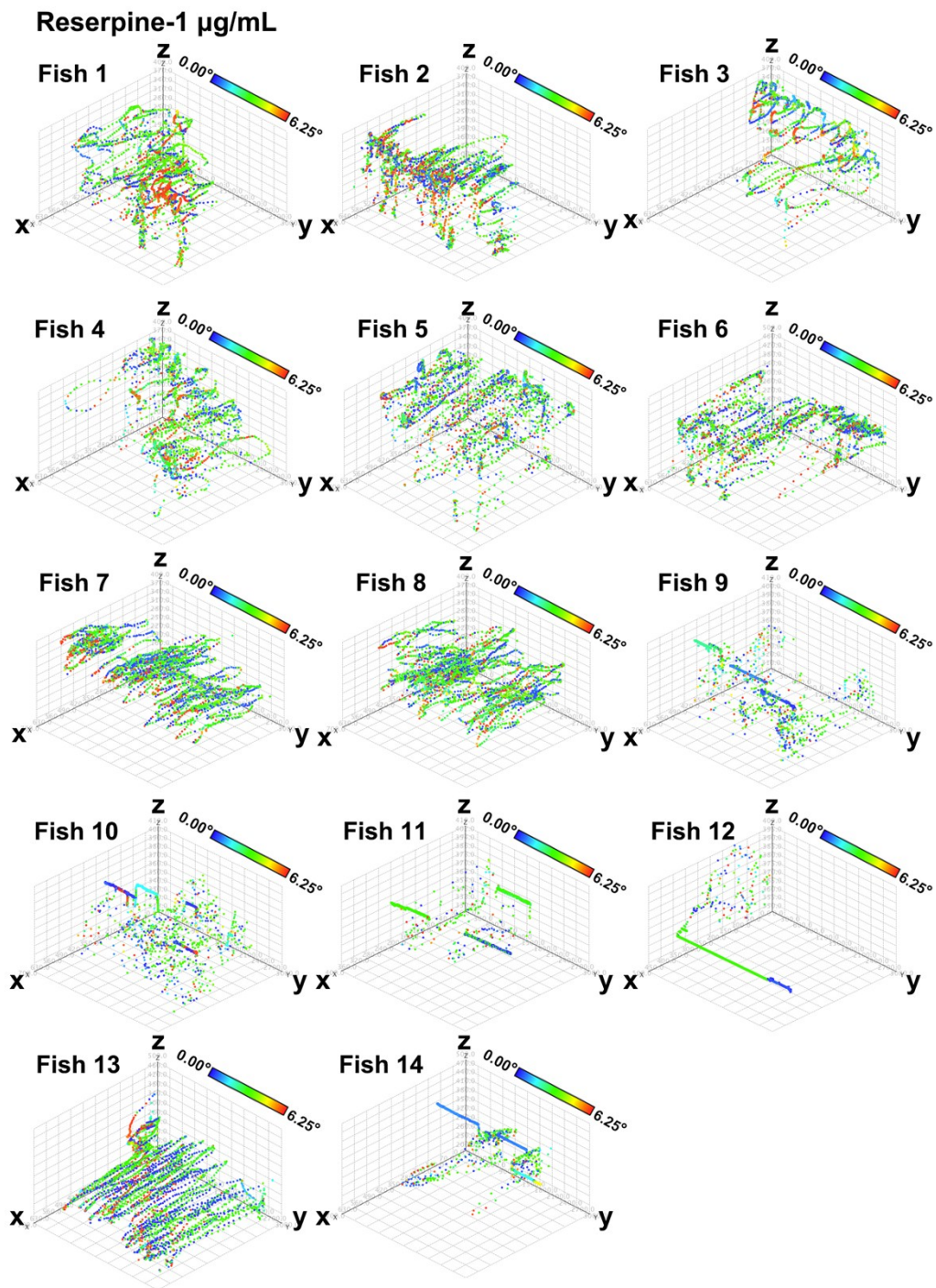


Figure S9 3D spatiotemporal reconstruction of instantaneous “droop tail angle” at swimming path of zebrafish exposed to 1 $\mu\text{g/mL}$ reserpine.

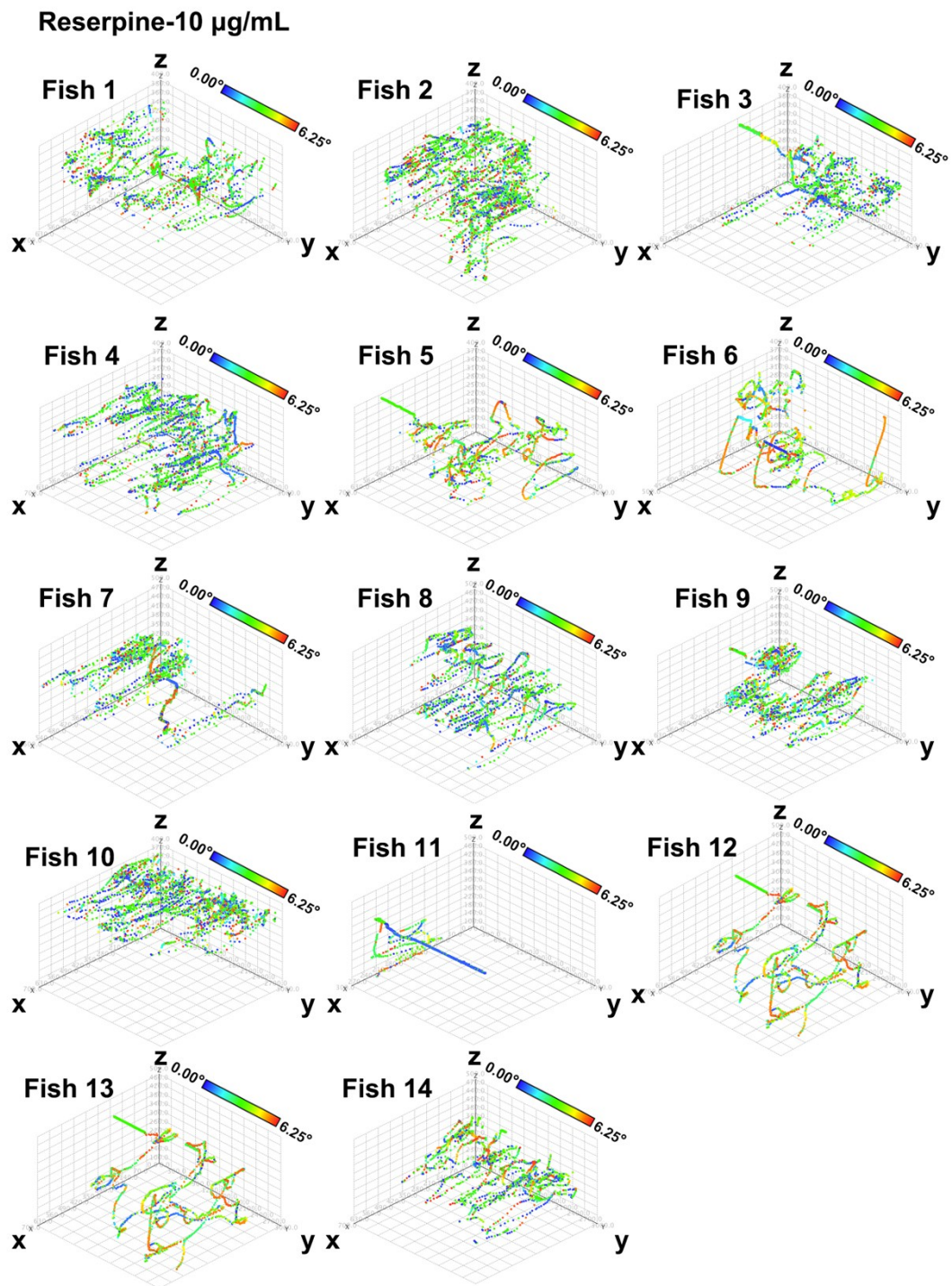


Figure S10 3D spatiotemporal reconstruction of instantaneous “droop tail angle” at swimming path of zebrafish exposed to 10 $\mu\text{g/mL}$ reserpine.