

Optical Properties of Biosilicas in Rice Plants

Kanako Sato,^a Akira Yamauchi,^a Noriaki Ozaki,^b Takaaki Ishigure,^a Yuya Oaki^a and Hiroaki Imai^{a*}

SUPPORTING INFORMATION

Supplementary Figures

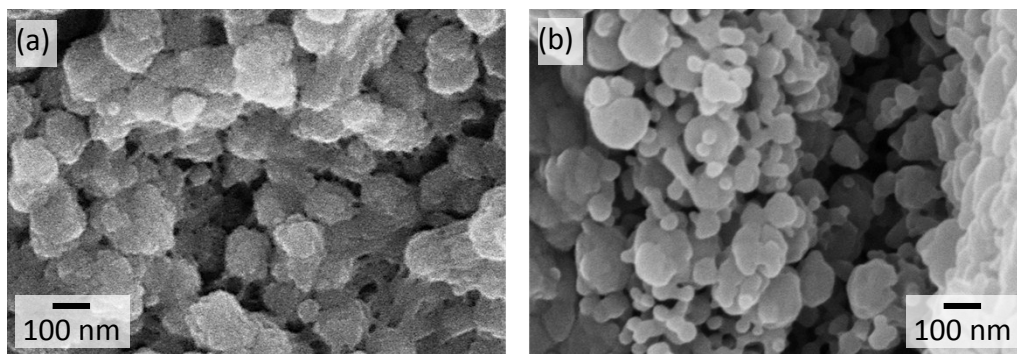


Figure S1. FESEM images of the silica particles composing the silica plates. (a) untreated sample.

(b) sample after calcination at 500 °C for 3 h.

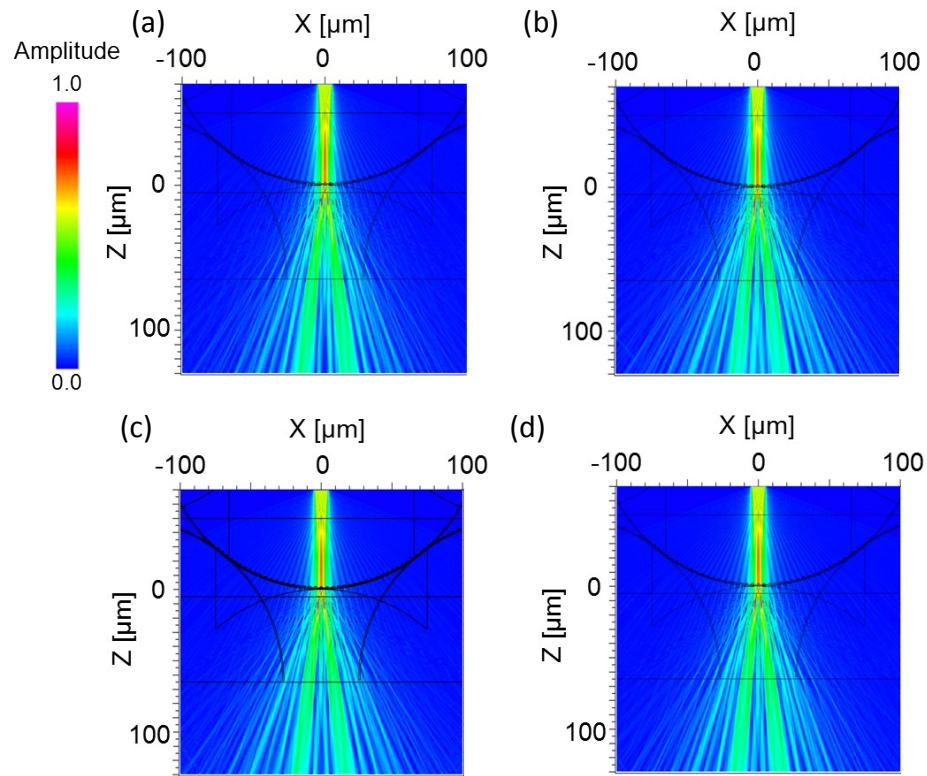


Figure S2. Amplitude maps of light entering the silica plates. Refractive indices of biosilicas (n_b) and the matrix (n_m) are: (a) $(n_b, n_m) = (1.42, 1.40)$, (b) $(n_b, n_m) = (1.50, 1.40)$, (c) $(n_b, n_m) = (1.46, 1.33)$, (d) $(n_b, n_m) = (1.46, 1.46)$.