

Supporting information

A novel rosamine-based fluorescent probe for bisulfite in aqueous solution

Di Zhang ^{a*}, Liu Wenya^b, Keke Chen ^b, Junye Cheng^b, Yufen Zhao,^{b,c} Yong Ye ^{b,c,*}

^a *Institute of Agricultural Quality Standards and Testing Technology, Henan Academy of Agricultural Sciences, Zhengzhou, China.*

^b *Phosphorus Chemical Engineering Research Center of Henan Province, The College of Chemistry and Molecular Engineering, Zhengzhou University, Zhengzhou, China.*

^c *Key Laboratory of Bioorganic Phosphorus Chemistry & Chemical Biology (Ministry of Education), Department of Chemistry, Tsinghua University, Beijing, China*

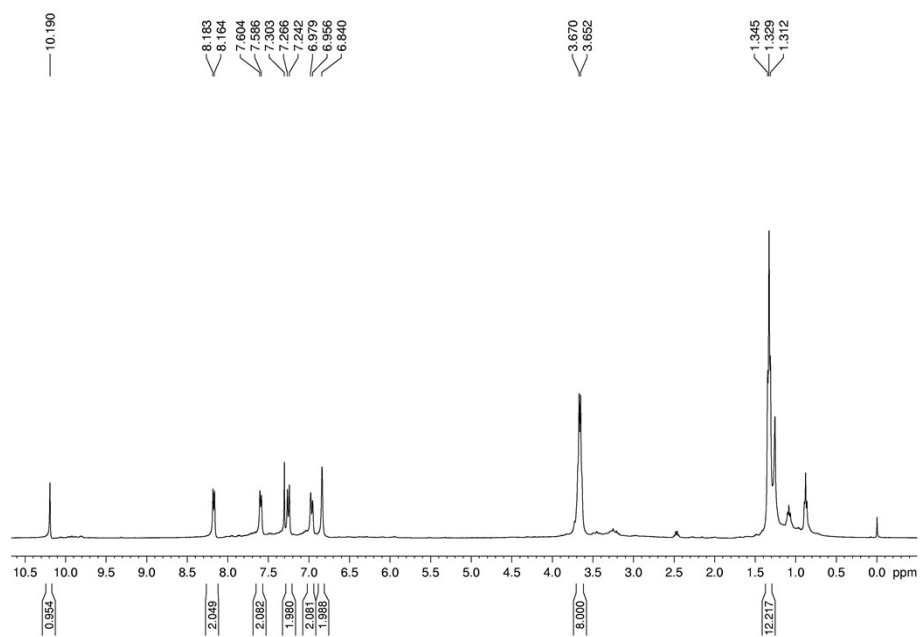


Figure S1. ^1H NMR chart of **RosCHO** (CDCl_3 , 400 MHz).

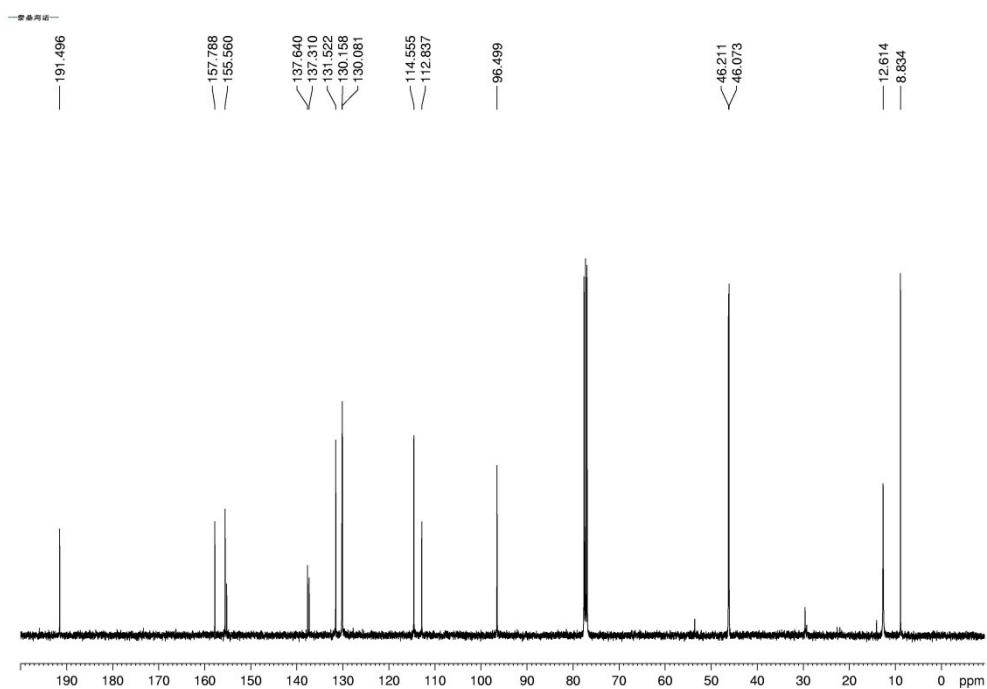


Figure S2. ^{13}C NMR chart of **RosCHO** (CDCl_3 , 100 MHz).

Sample Name	427.2380	Position	P1-D5	Instrument Name	Instrument 1	User Name	Agilent FSE
Inj Vol	0.5	InjPosition		SampleType	Sample	IRM Calibration Status	Success
Data Filename	427.2380-0.2ul.d	ACQ Method	test.m	Comment		Acquired Time	6/12/15 Fri 17:33:58

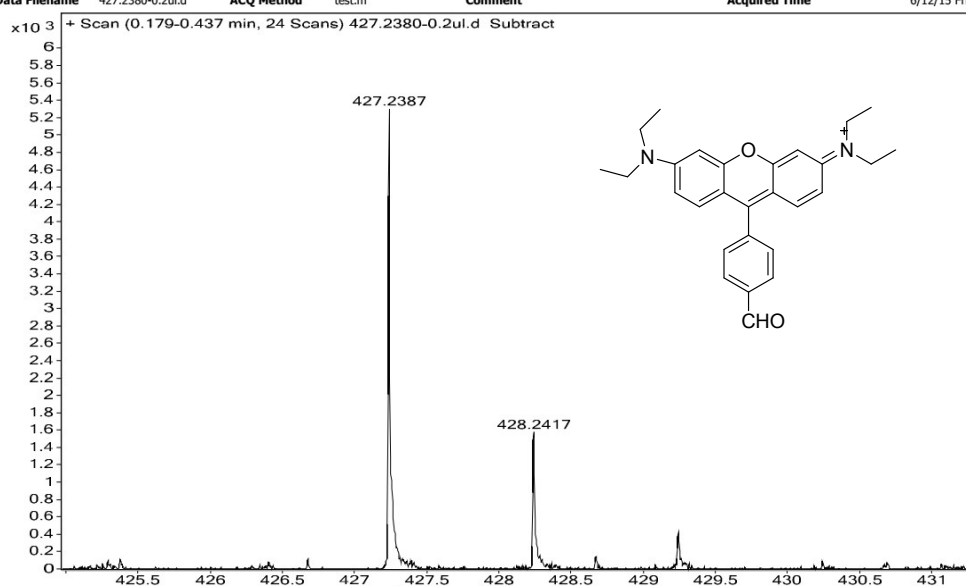


Figure S3. ESI-HRMS spectrum of **RosCHO**

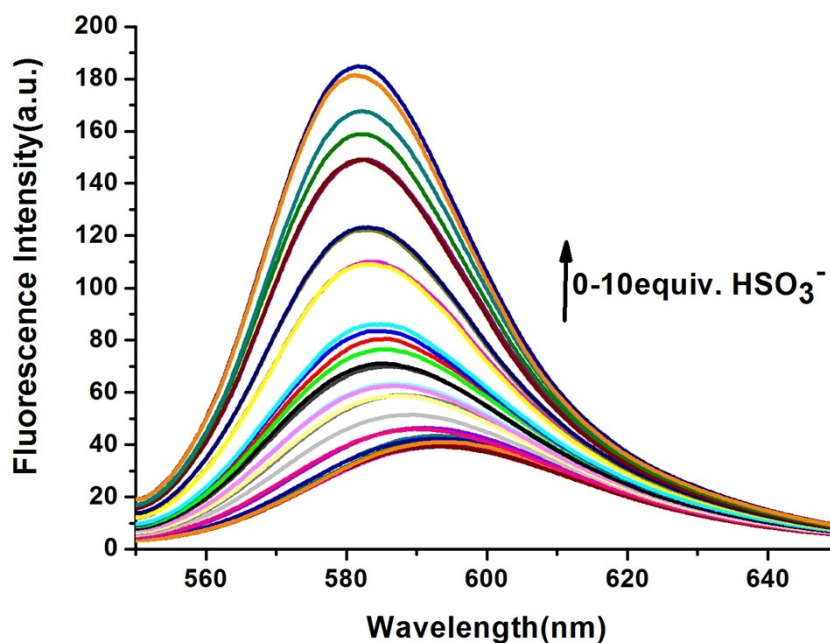


Figure S4. Fluorescence emission changes of **RosCHO** (10 μM) in the presence of different concentrations of NaHSO_3 (0-100 μM) in Tris-HCl (10 mM, pH = 5) at room temperature. (λ_{ex} = 520 nm, λ_{em} = 580 nm, Slits: 5.0 nm).

Sample Name	RosCHO+	Position	P1-A8	Instrument Name	Instrument 1	User Name	Agilent FSE
Inj Vol	0.8	InjPosition		SampleType	Sample	IRM Calibration Status	Some Ions Missed
Data Filename	RosCHO+-0.2ul.d	ACQ Method	test.m	Comment		Acquired Time	12/22/15 Tue 15:57:36

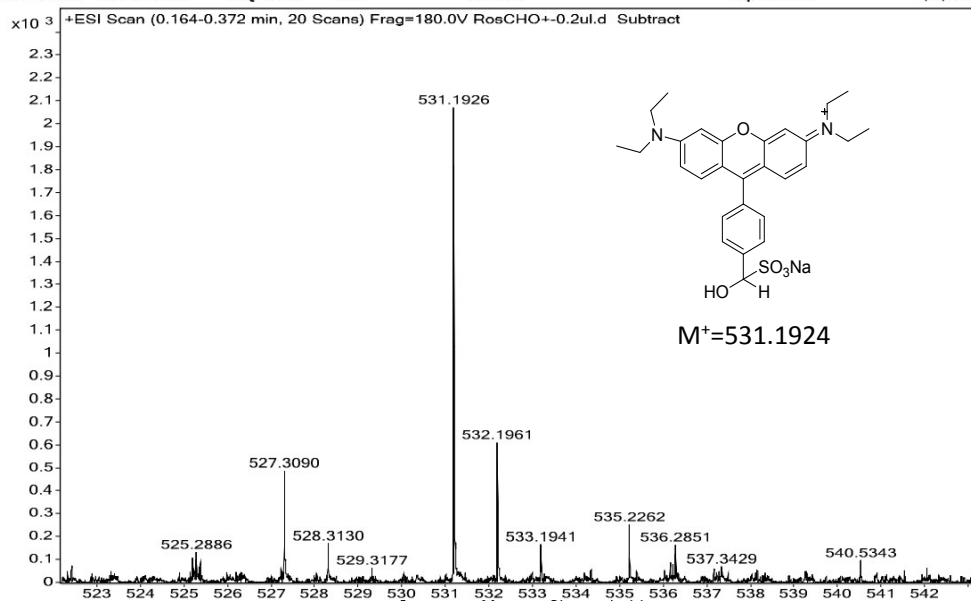


Figure S5. ESI-HRMS spectrum of RosCHO and NaHSO₃