

Electronic Supplementary Information

For the Manuscript Entitled

Selective fluorescent turn-off sensing of Pd²⁺ ion: Applications as paper strips, polystyrene films, and in cell imaging

Pramod Kumar, Vijay Kumar, Rajeev Gupta*

Department of Chemistry, University of Delhi, Delhi – 110 007

List of Figures

Figure S1. FTIR spectrum of probe L1.

Figure S2. FTIR spectrum of probe L2.

Figure S2. FTIR spectrum of probe L3.

Figure S2. FTIR spectrum of probe L4.

Figure S5. ^1H NMR spectrum of probe L1 in DMSO- d_6 where * represents the residual solvent peak(s).

Figure S6. ^{13}C NMR spectrum of probe L1 in DMSO- d_6 where * represents the residual solvent peak(s).

Figure S7. ^1H NMR spectrum of probe L2 in DMSO- d_6 where * represents the residual solvent peak(s).

Figure S8. ^{13}C NMR spectrum of probe L2 in DMSO- d_6 where * represents the residual solvent peak(s).

Figure S9. ^1H NMR spectrum of probe L3 in DMSO- d_6 where * represents the residual solvent peak(s).

Figure S10. ^{13}C NMR spectrum of probe L3 in DMSO- d_6 where * represents the residual solvent peak(s).

Figure S11. ^1H NMR spectrum of probe L4 in DMSO- d_6 where * represents the residual solvent peak(s).

Figure S12. ^{13}C NMR spectrum of probe L4 in DMSO- d_6 where * represents the residual solvent peak(s).

Figure S13. (a) UV-visible spectra of probes L1- L4(50 μM) in dimethylformamide (DMF) solution. (b) Emission spectra of L1-L4 (50 μM) in HEPES buffer containing 1% DMF (10 mM, $\text{pH} = 7.2$).

Figure S14. (a) Emission spectra of probe L1 (50 μM) in HEPES buffer containing 1% DMF (10 mM, $\text{pH} = 7.2$) and after its interaction with assorted metal ions (0-250 μM). (b) Bar diagram exhibiting change in emission intensity at 455 nm of L1 (50 μM) after the addition of assorted metal ions (0-250 μM).

Figure S15. (a) Emission spectra of probe L2(50 μM) in HEPES buffer containing 1% DMF (10 mM, $\text{pH} = 7.2$) and after its interaction with assorted metal ions (0-250 μM). (b) Bar diagram

exhibiting change in emission intensity at 460 nm of L2 (50 μM) after the addition of assorted metal ions (0-250 μM).

Figure S16. Bar diagram exhibiting relative quenching of probes L1-L4 (50 μM) after interaction with Pd^{2+} ion (250 μM).

Figure S17. Determination of detection limit of probes (a) L3 (50 μM) and (b) L4 (50 μM) in HEPES buffer containing 1% DMF (10 mM, $\text{pH} = 7.2$) towards Pd^{2+} ion (Concentration was linear from 0 - 100 μM).

Figure S18. Emission spectra of probes L3 (a) and L4 (b) (50 μM) in HEPES buffer containing 1% DMF (10 mM, $\text{pH} = 7.2$) and after its interaction with different palladium salts (250 μM , 5 equivalents).

Figure S19 (a) Job's plot for probes L3 and L4 with Pd^{2+} ion in HEPES buffer containing 1% DMF (10 mM, $\text{pH} = 7.2$) (Total concentration of probes L3 or L4 and Pd^{2+} ion were maintained at 100 μM).

Figure S20 Representative Benesi-Hildebrand plots showing reciprocal of change in emission intensity of probes L3 and L4 vs. reciprocal of concentration of Pd^{2+} ion in HEPES buffer containing 1% DMF (10 mM, $\text{pH} = 7.2$).

Figure S21. Change in absorbance of probes (a) L3 (25 μM) and (b) L4 (25 μM) with Pd^{2+} ion (0-125 μM) in HEPES buffer containing 1% DMF (10 mM, $\text{pH} = 7.2$).

Figure S22. FTIR spectrum of complex **1**.

Figure S23. ^1H NMR spectrum of complex **1** in DMSO-d_6 where * represents the residual solvent peak(s).

Figure S24. Emission spectra of probe L3, in-situ formed Pd-L3 and isolated complex **1** (50 μM) in HEPES buffer containing 1% DMF (10 mM, $\text{pH} = 7.2$).

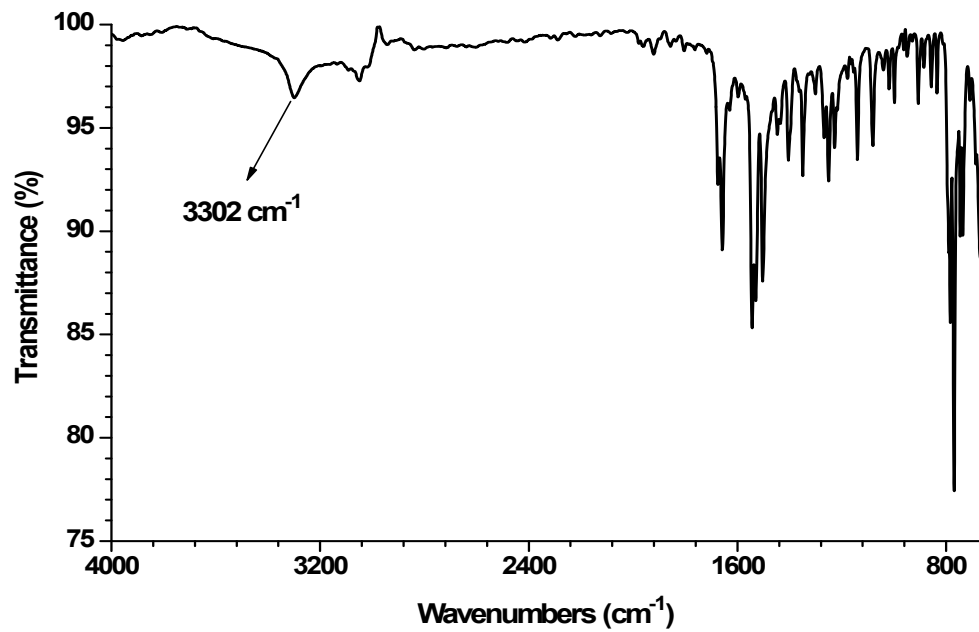


Figure S1. FTIR spectrum of probe L1.

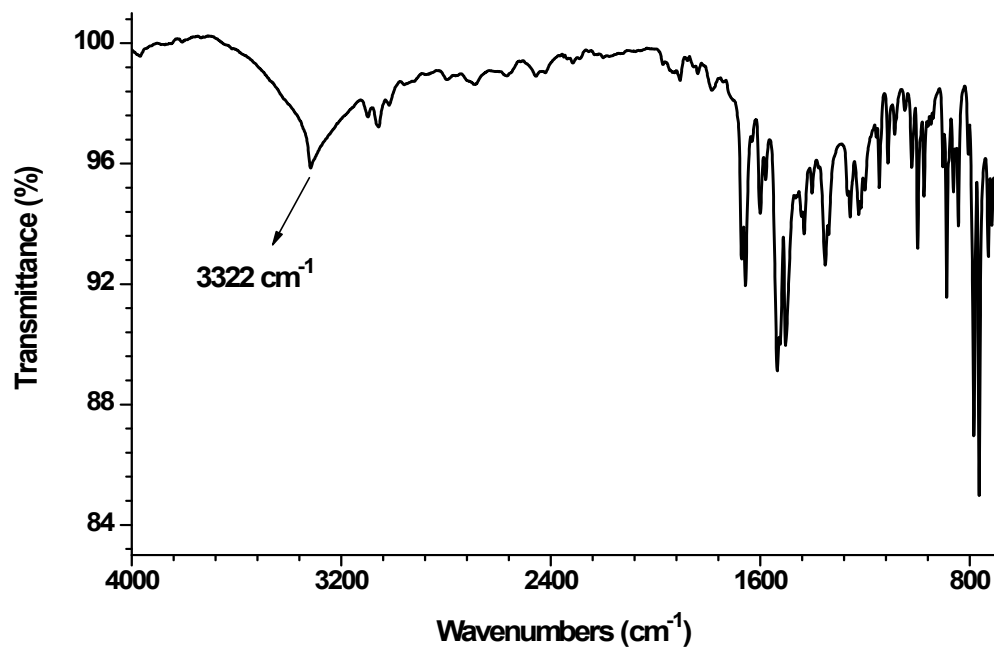


Figure S2. FTIR spectrum of probe L2.

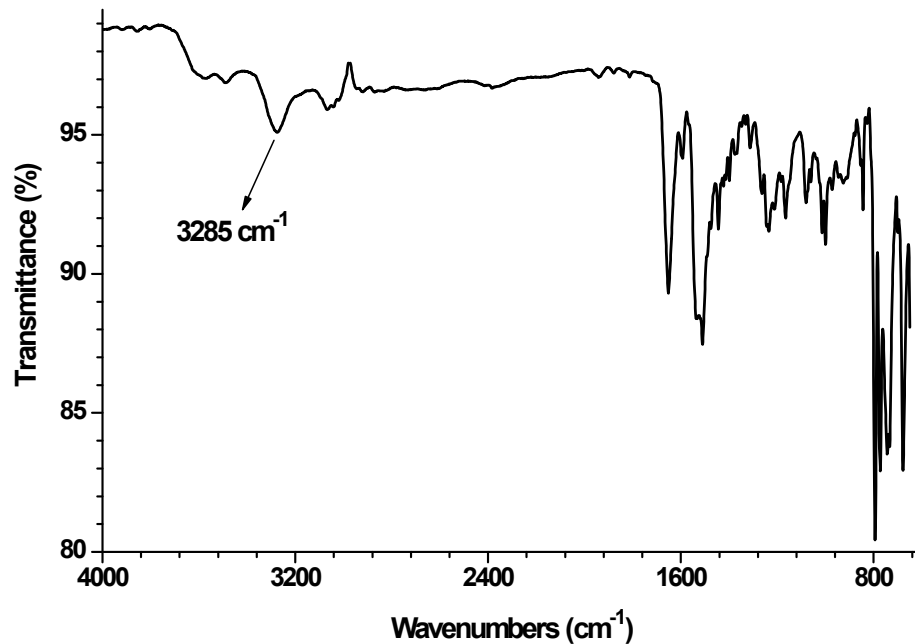


Figure S3. FTIR spectrum of probe L3.

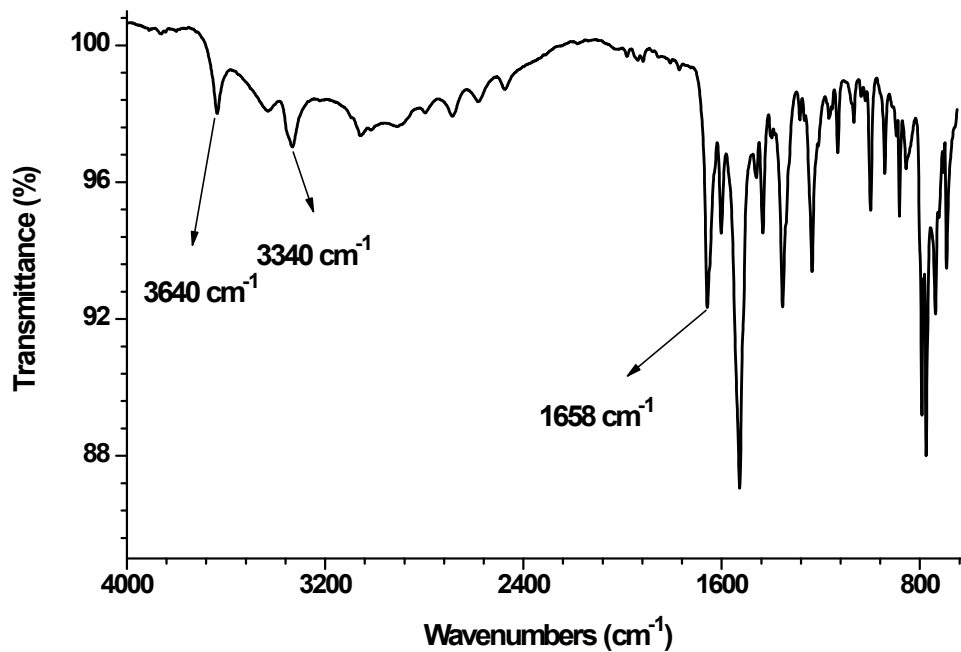


Figure S4. FTIR spectrum of probe L4.

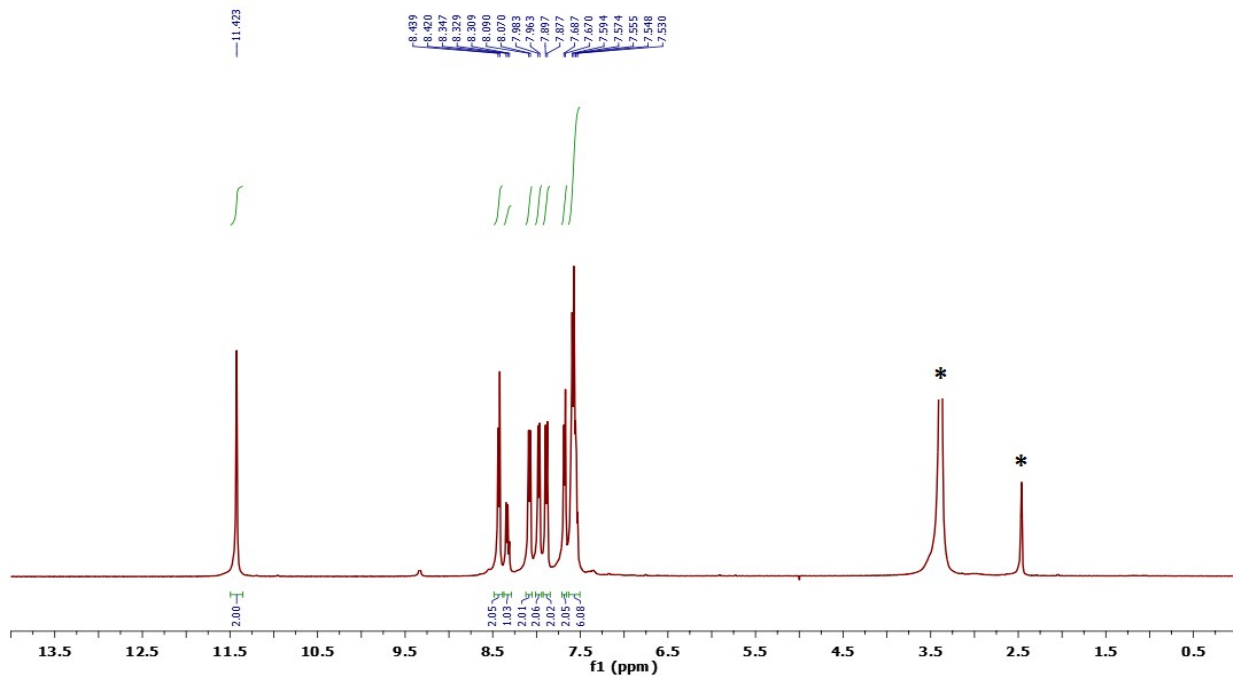


Figure S5. ^1H NMR spectrum of probe L1 in DMSO-d_6 where * represents the residual solvent peak(s).

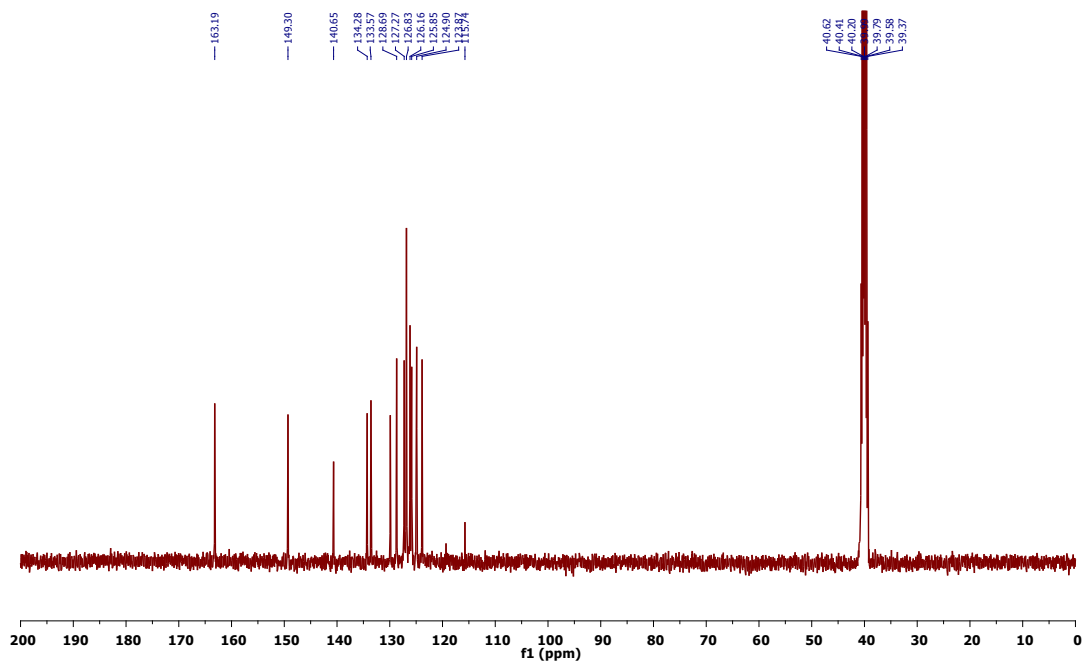


Figure S6. ^{13}C NMR spectrum of probe L1 in DMSO-d_6 where * represents the residual solvent peak(s).

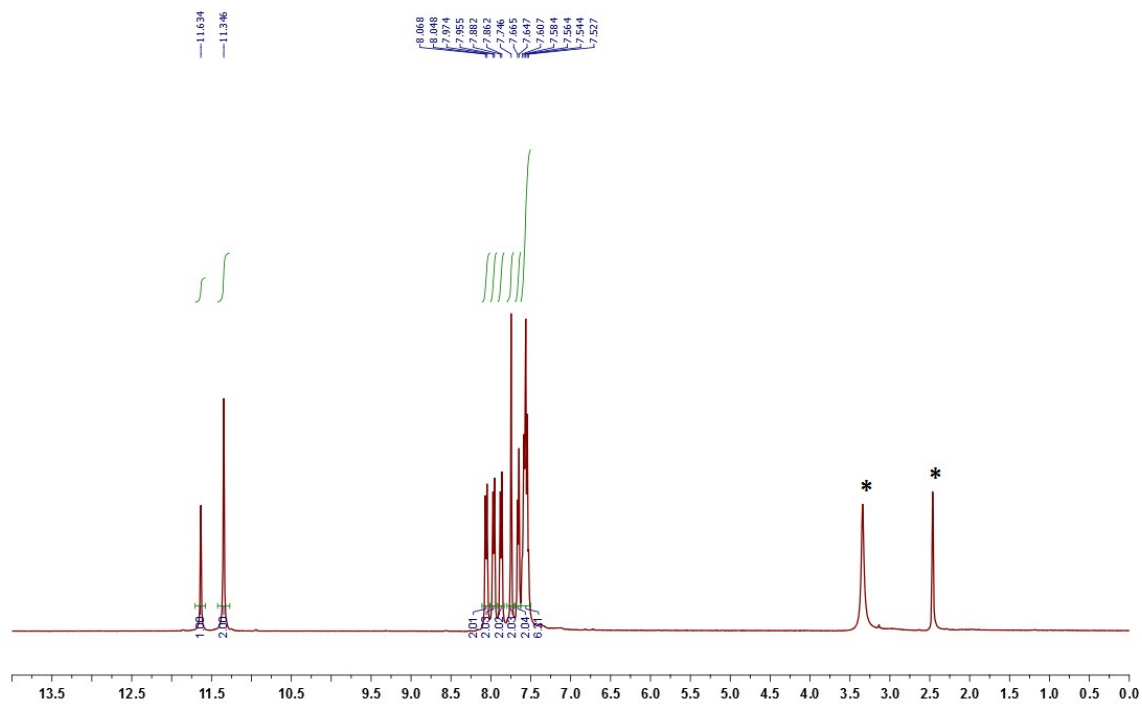


Figure S7. ^1H NMR spectrum of probe L2 in DMSO-d_6 where * represents the residual solvent peak(s).

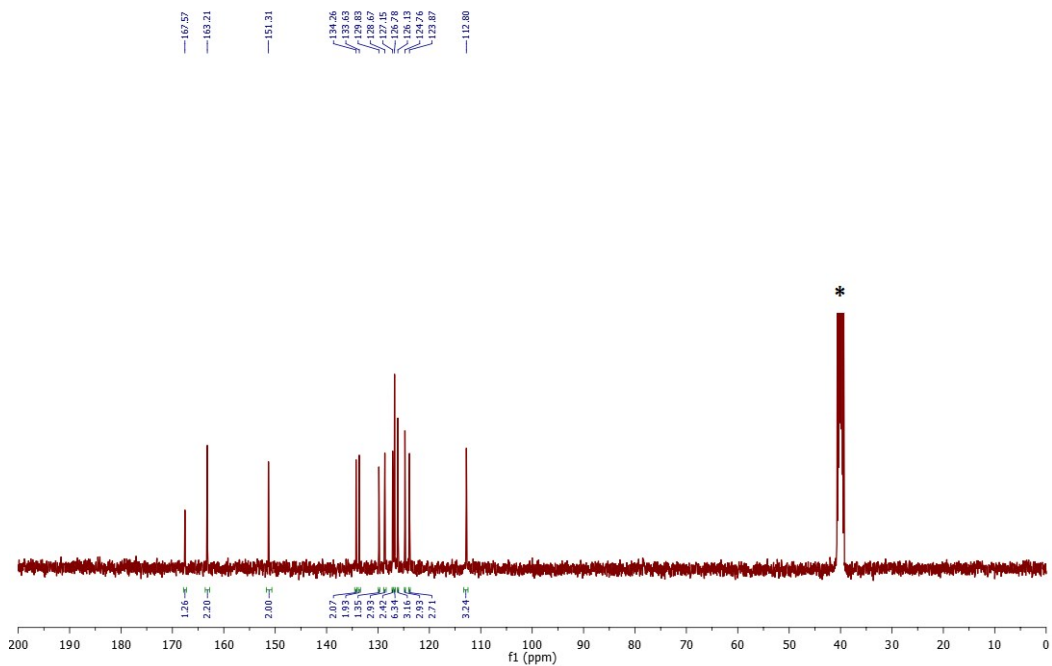


Figure S8. ^{13}C NMR spectrum of probe L2 in DMSO-d_6 where * represents the residual solvent peak(s).

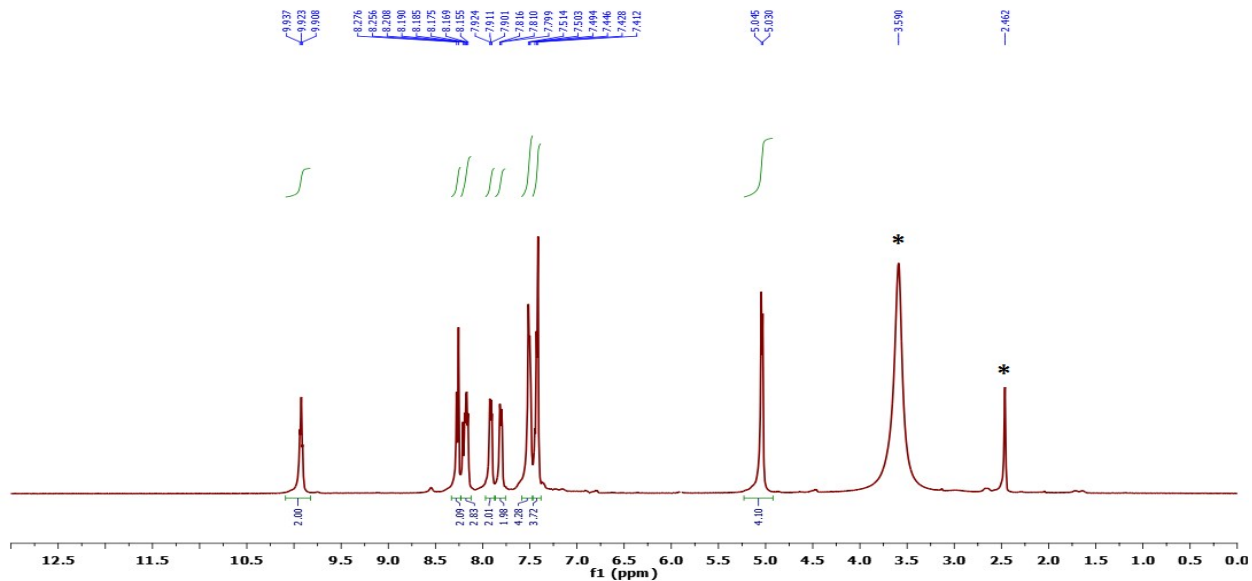


Figure S9. ^1H NMR spectrum of probe L3 in DMSO-d_6 where * represents the residual solvent peak(s).

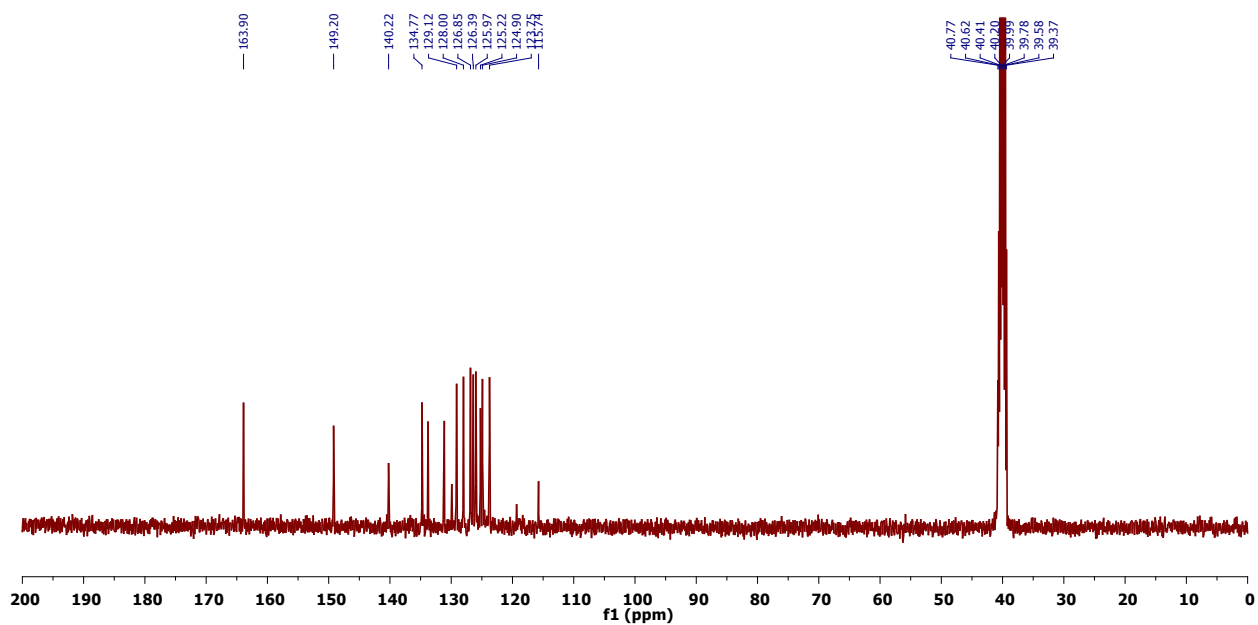


Figure S10. ^{13}C NMR spectrum of probe L3 in DMSO-d_6 where * represents the residual solvent peak(s).

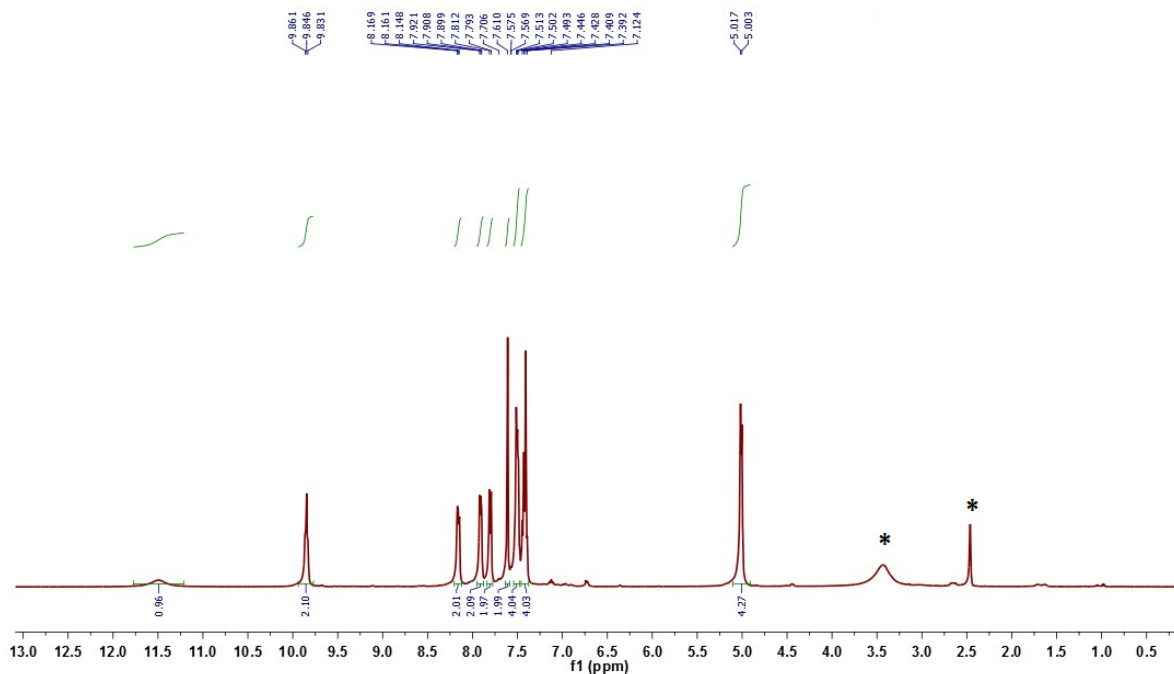


Figure S11. ^1H NMR spectrum of probe L4 in DMSO-d_6 where * represents the residual solvent peak(s).

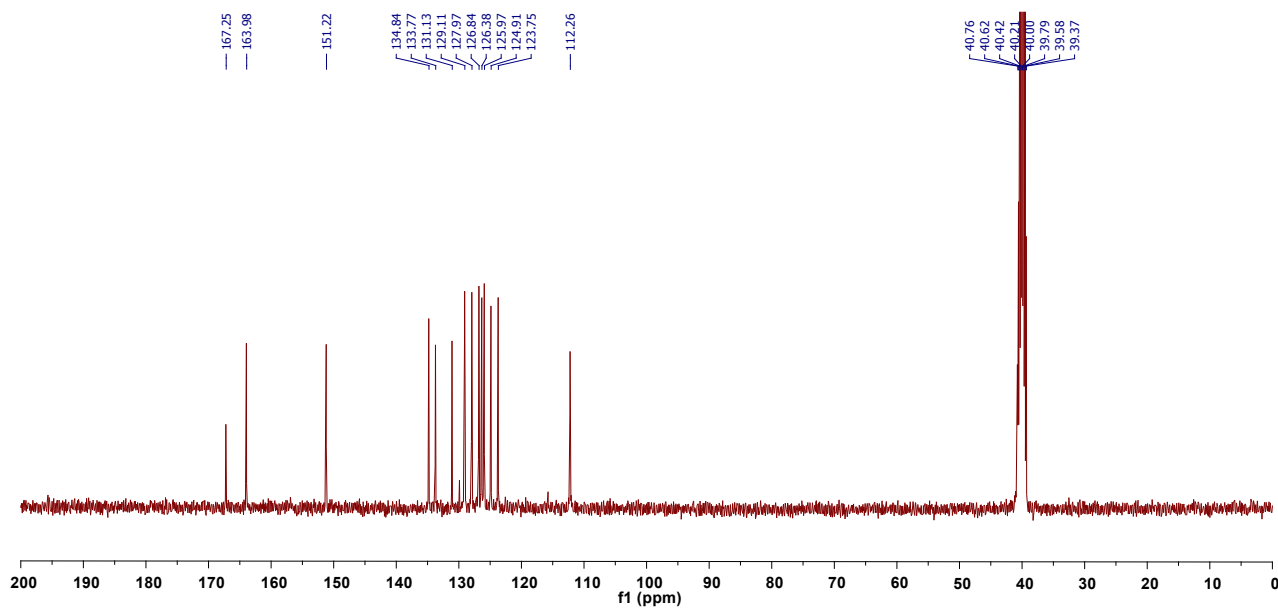


Figure S12. ^{13}C NMR spectrum of probe L4 in DMSO-d_6 where * represents the residual solvent peak(s).

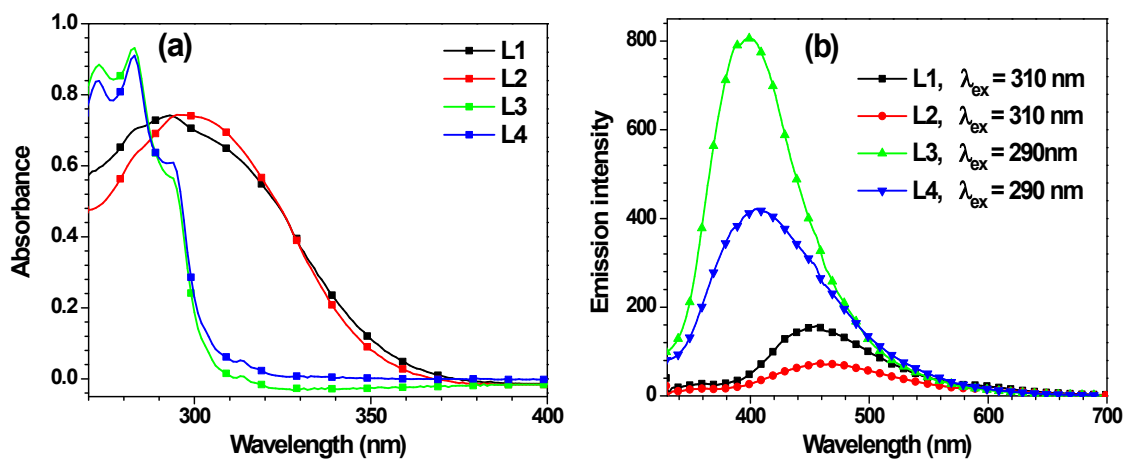


Figure S13. (a) UV-visible spectra of probes L1- L4 (50 μM) in dimethylformamide (DMF) solution. (b) Emission spectra of L1-L4 (50 μM) in HEPES buffer containing 1% DMF (10 mM, $\text{pH} = 7.2$).

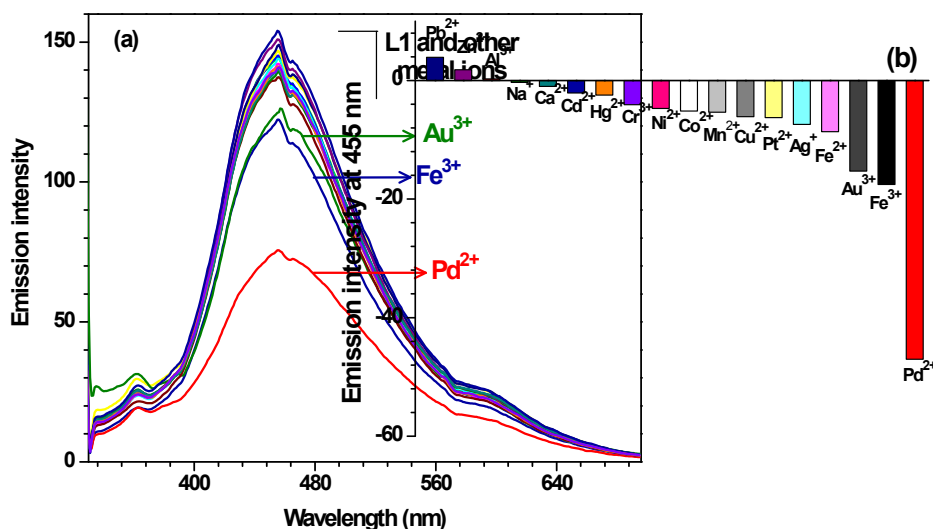


Figure S14. (a) Emission spectra of probe L1(50 μM) in HEPES buffer containing 1% DMF (10 mM, $\text{pH} = 7.2$) and after its interaction with assorted metal ions (0-250 μM). (b) Bar diagram exhibiting change in emission intensity at 455 nm of L1 (50 μM) after the addition of assorted metal ions (0-250 μM).

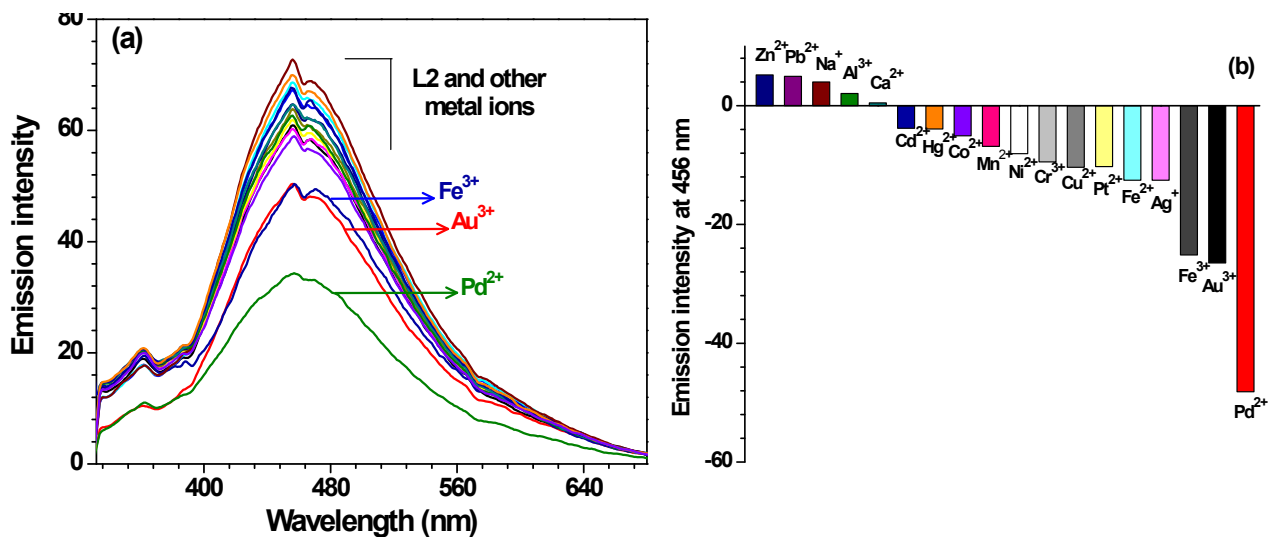


Figure S15. (a) Emission spectra of probe L2 (50 μM) in HEPES buffer containing 1% DMF (10 mM, $\text{pH} = 7.2$) and after its interaction with assorted metal ions (0-250 μM). (b) Bar diagram exhibiting change in emission intensity at 460 nm of L2 (50 μM) after the addition of assorted metal ions (0-250 μM).

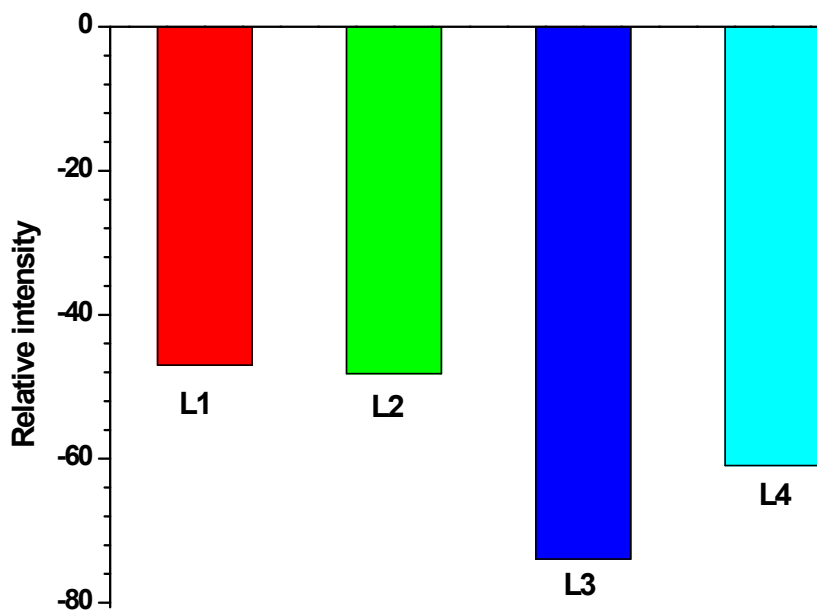


Figure S16. Bar diagram exhibiting relative quenching of probes L1-L4 (50 μM) after interaction with Pd^{2+} ion (250 μM).

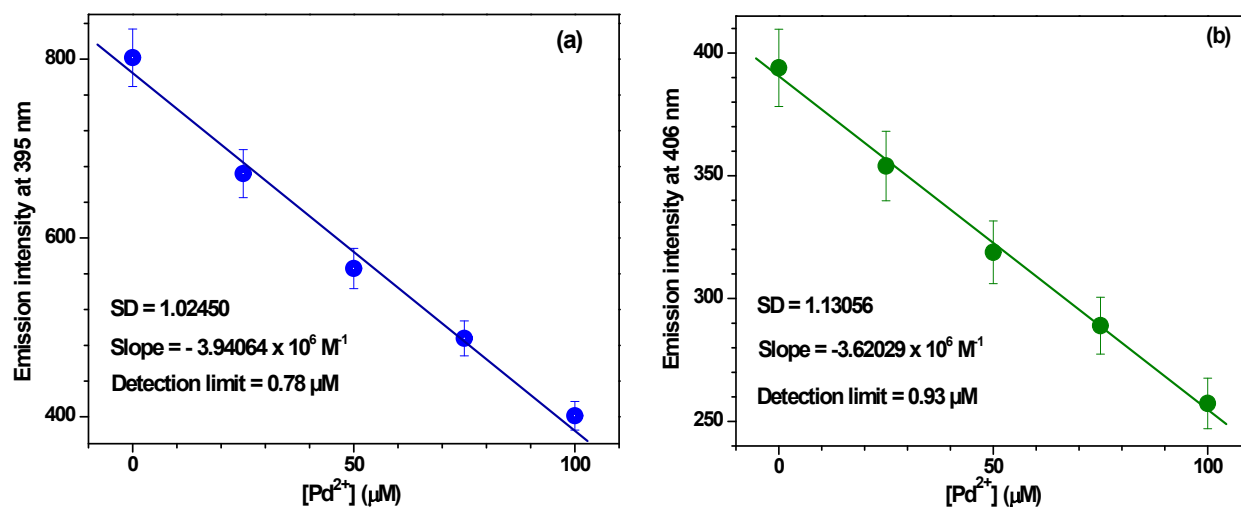


Figure S17. Determination of detection limit of probes (a) L3 (50 μM) and (b) L4 (50 μM) in HEPES buffer containing 1% DMF (10 mM, pH = 7.2) towards Pd²⁺ ion (Concentration was linear from 0 - 100 μM).

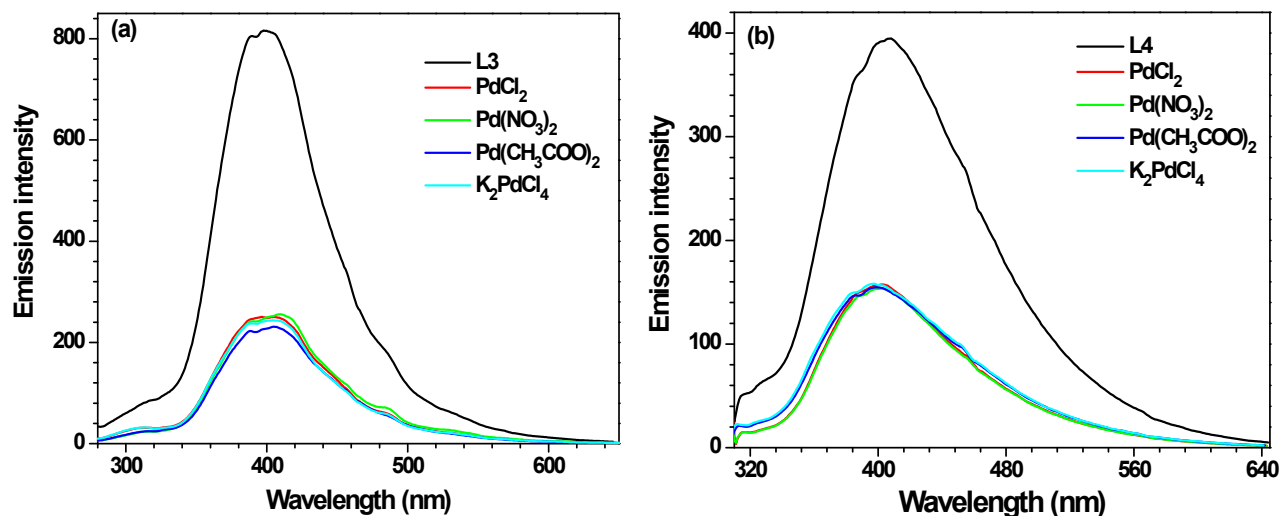
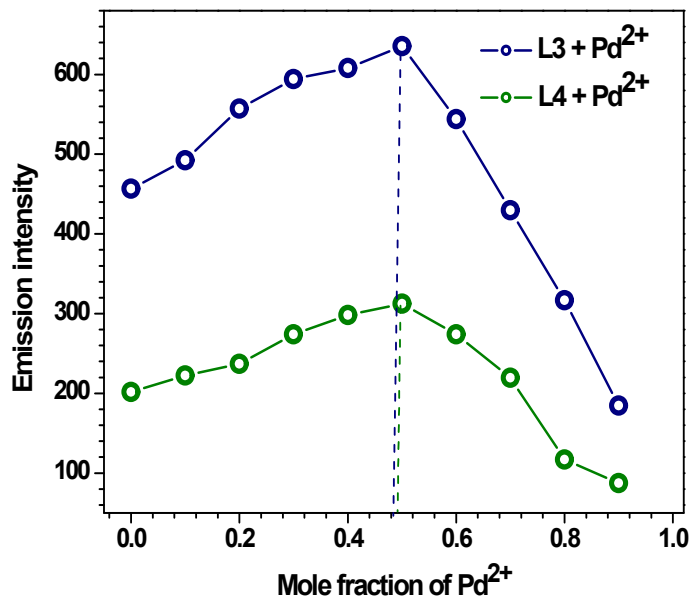


Figure S18. Emission spectra of probes L3 (a) and L4 (b) (50 μM) in HEPES buffer containing 1% DMF (10 mM, pH = 7.2) and after its interaction with different palladium salts (250 μM, 5 equivalents).



FigureS19. (a) Job's plot for probes L3 and L4 with Pd²⁺ ion in HEPES buffer containing 1% DMF (10 mM, pH = 7.2) (Total concentration of probes L3 or L4 and Pd²⁺ were maintained at 100 μM).

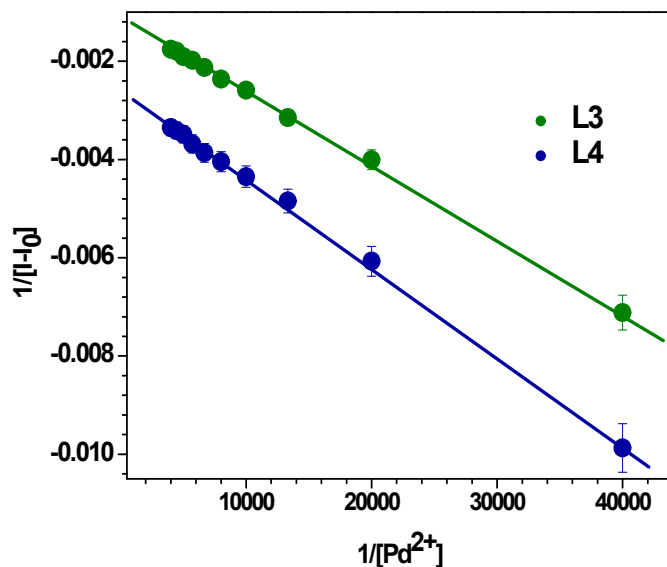


Figure S20 Representative Benesi-Hildebrand plots showing reciprocal of change in emission intensity of probes L3 and L4 vs. reciprocal of concentration of Pd²⁺ ion in HEPES buffer containing 1% DMF (10 mM, pH = 7.2).

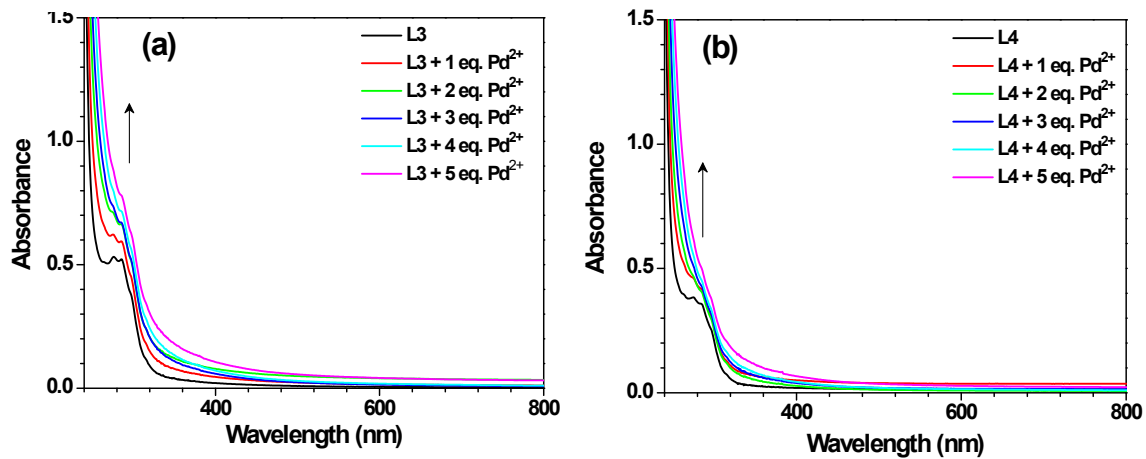


Figure S21. Change in absorbance of probes (a) L3(25 μM) and (b) L4 (25 μM)with Pd^{2+} ion (0-125 μM) in HEPES buffer containing 1% DMF (10 mM, $\text{pH} = 7.2$).

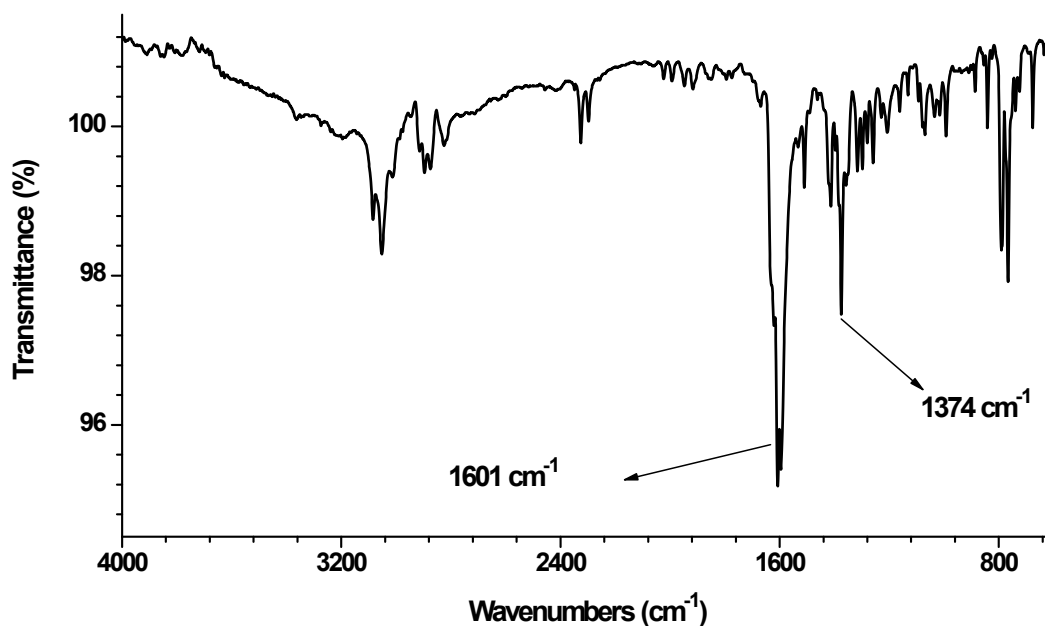


Figure S22. FTIR spectrum of complex 1.

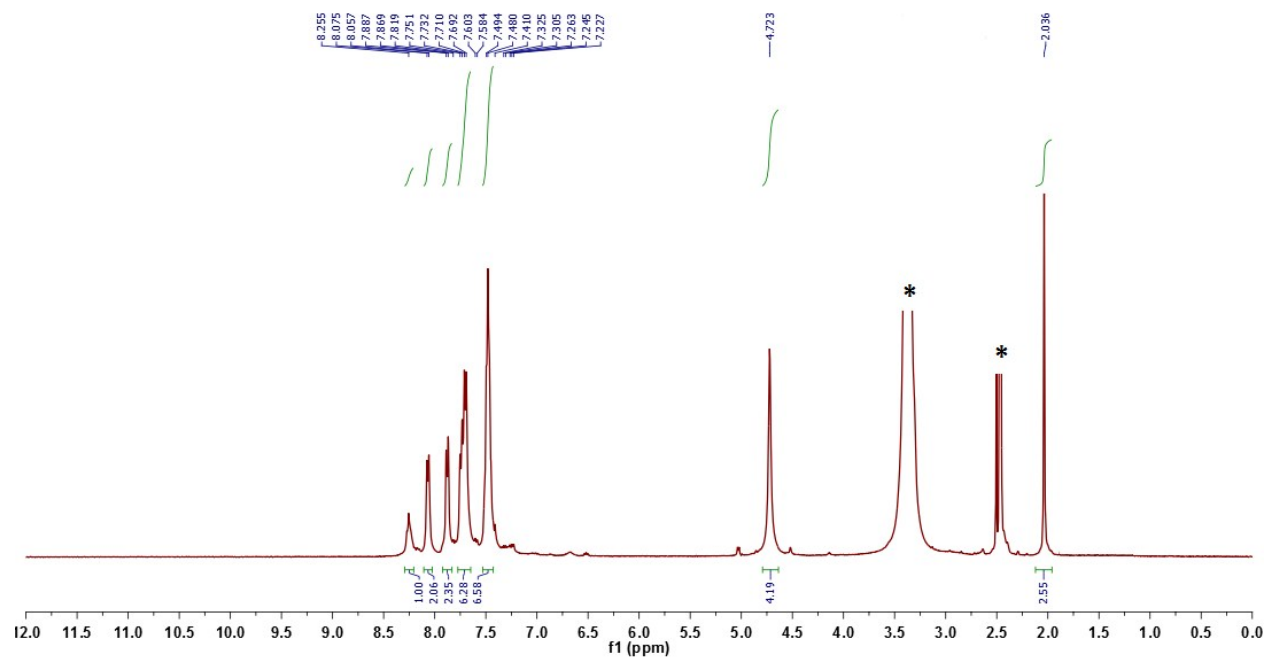


Figure S23. ^1H NMR spectrum of complex **1** in DMSO-d_6 where * represents the residual solvent peak(s).

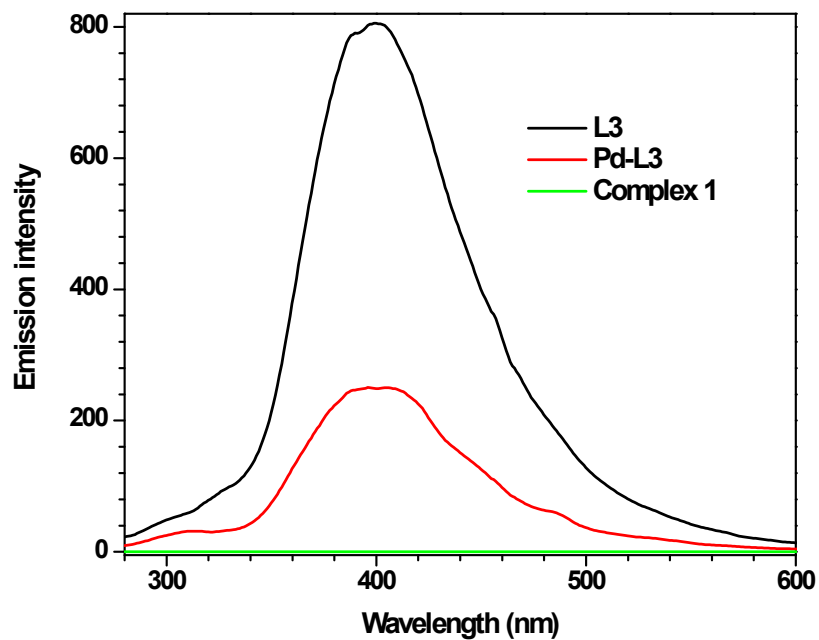


Figure S24. Emission spectra of probe L3, in-situ formed Pd-L3 and isolated complex **1** ($50\ \mu\text{M}$) in HEPES buffer containing 1% DMF ($10\ \text{mM}$, $\text{pH} = 7.2$).