

—12.9626

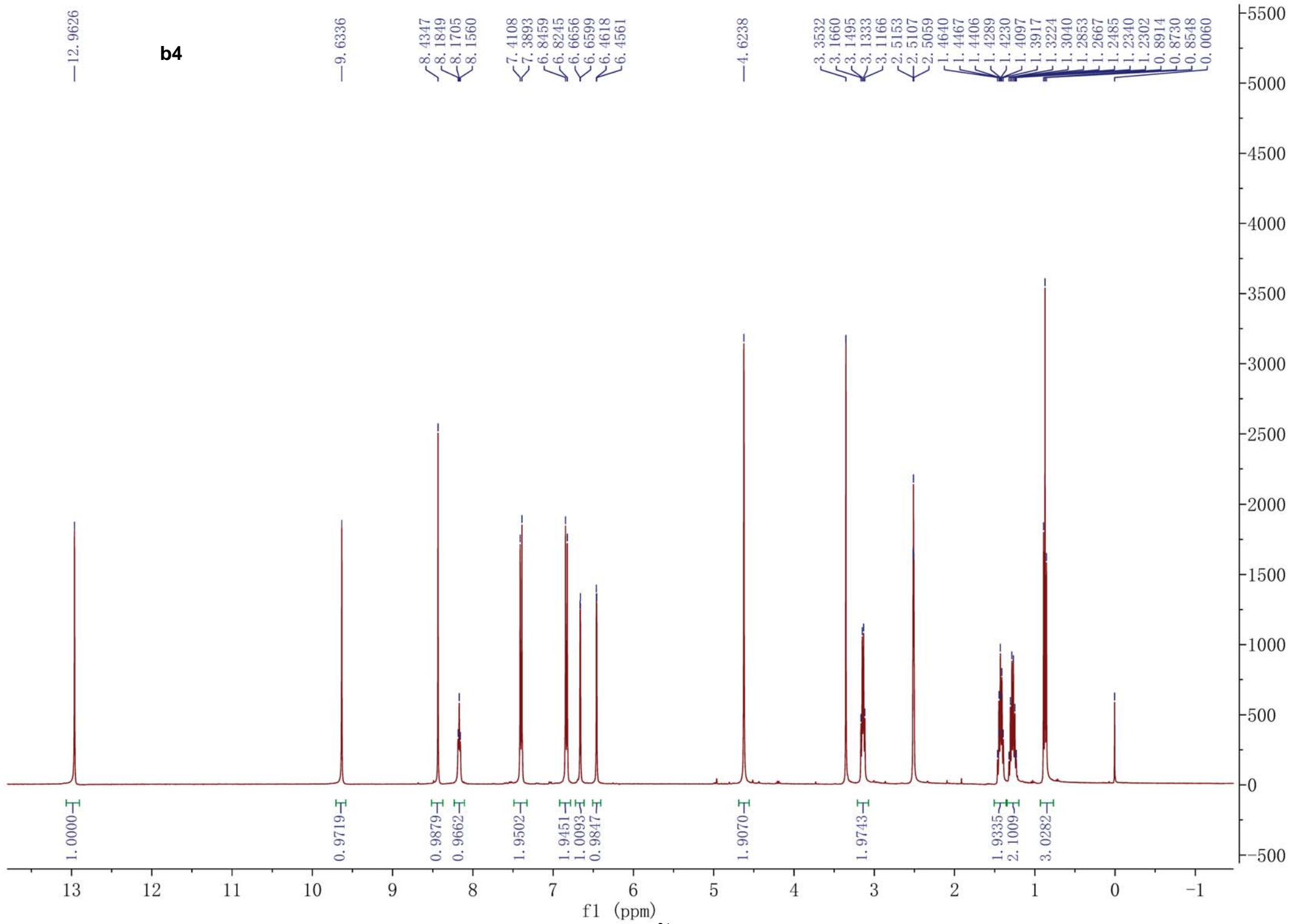
**b4**

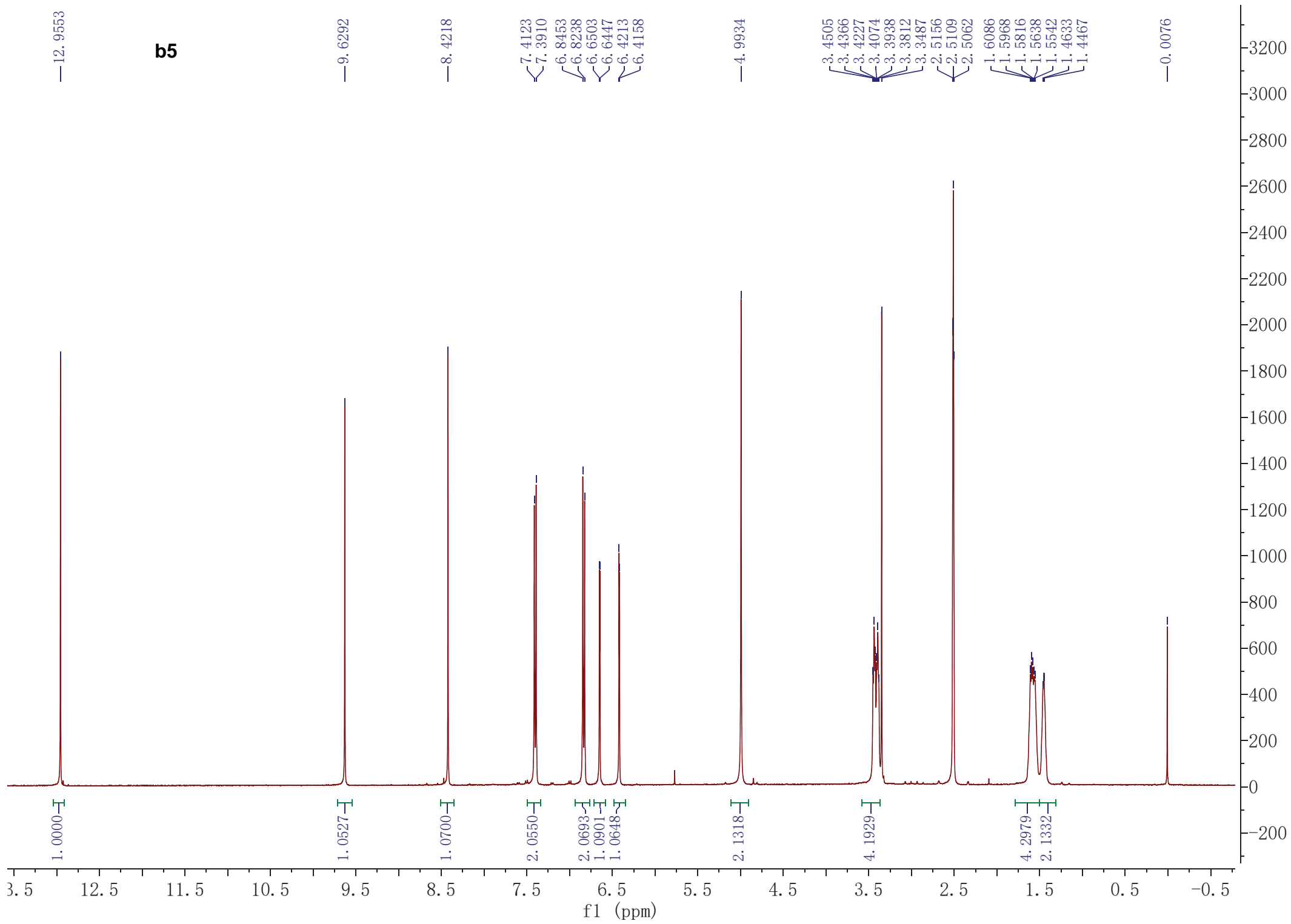
—9.6336

8.4347  
8.1849  
8.1705  
8.1560  
7.4108  
7.3893  
6.8459  
6.8245  
6.6656  
6.6599  
6.4618  
6.4561

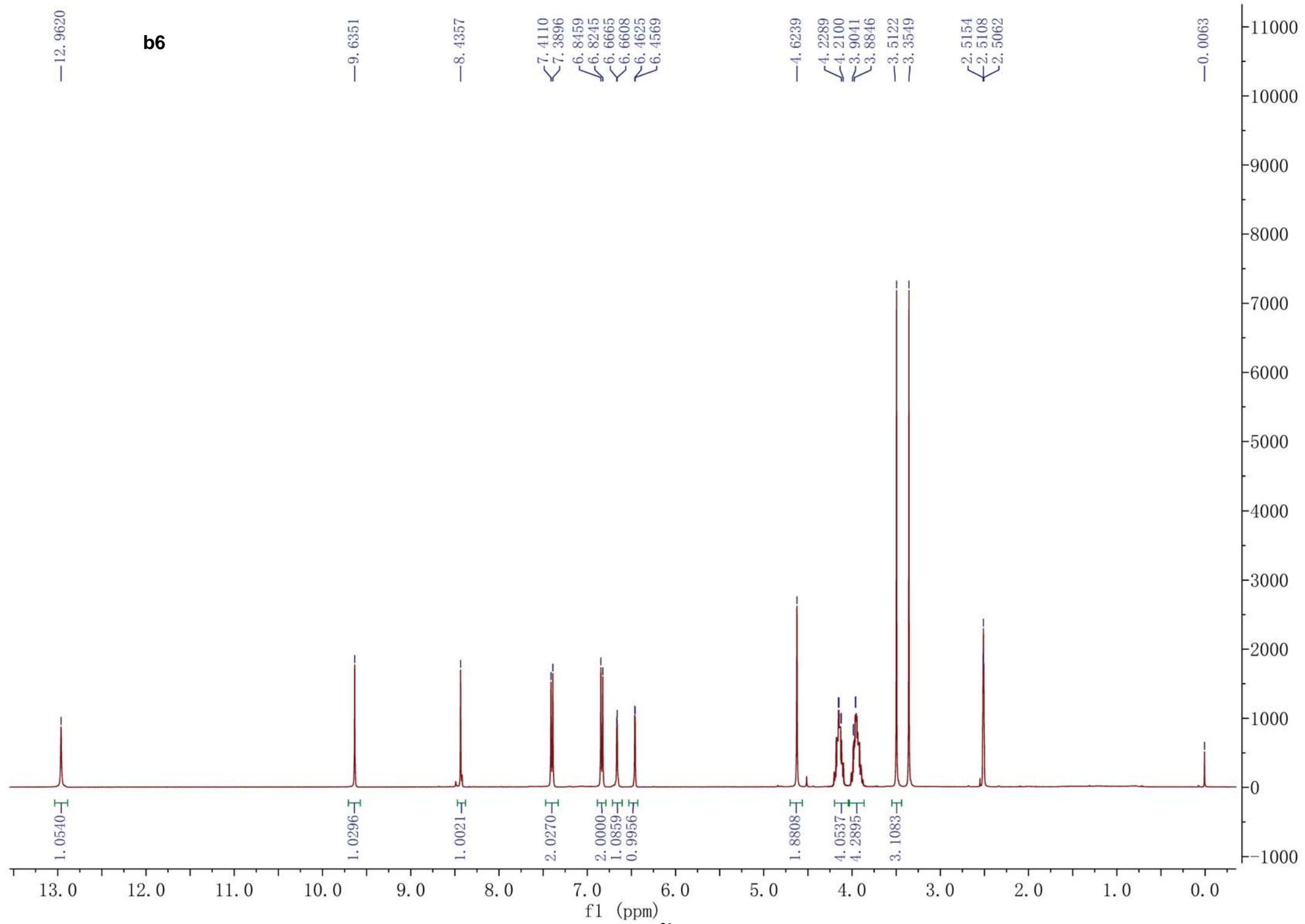
—4.6238

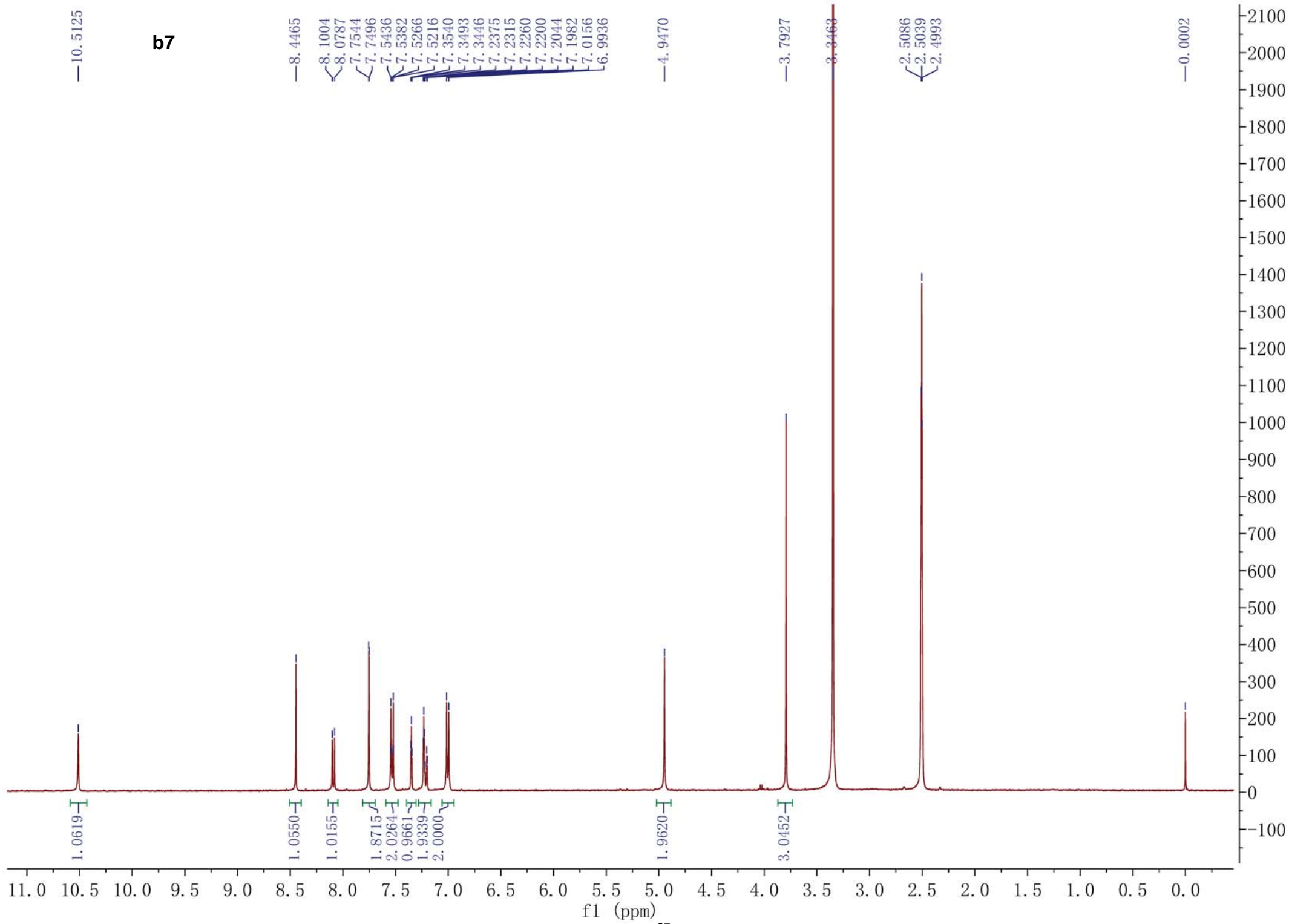
3.3532  
3.1660  
3.1495  
3.1333  
3.1166  
2.5153  
2.5107  
2.5059  
1.4640  
1.4467  
1.4406  
1.4289  
1.4230  
1.4097  
1.3917  
1.3224  
1.3040  
1.2853  
1.2667  
1.2485  
1.2340  
1.2302  
0.8914  
0.8730  
0.8548  
0.0060



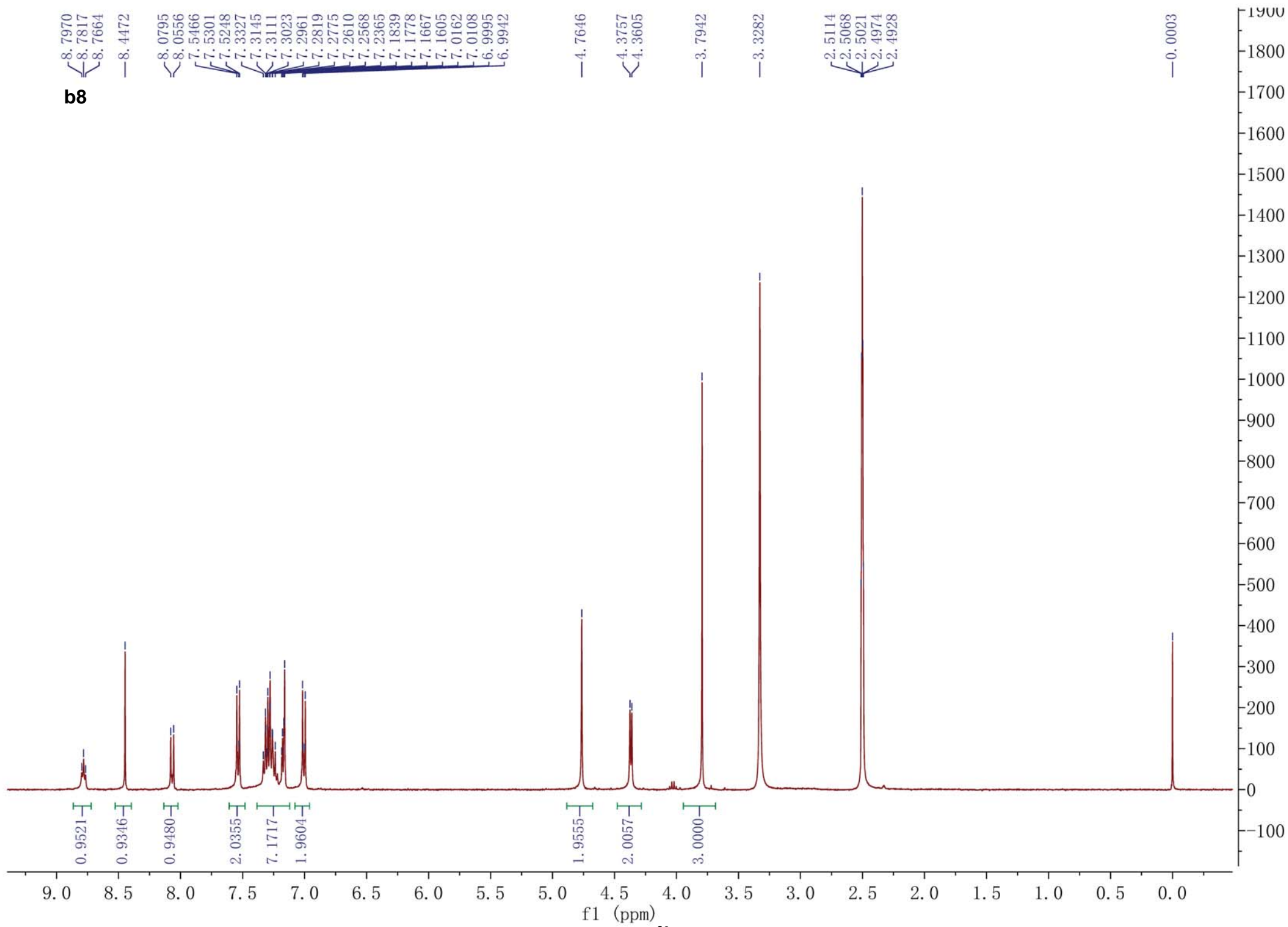


**b6**



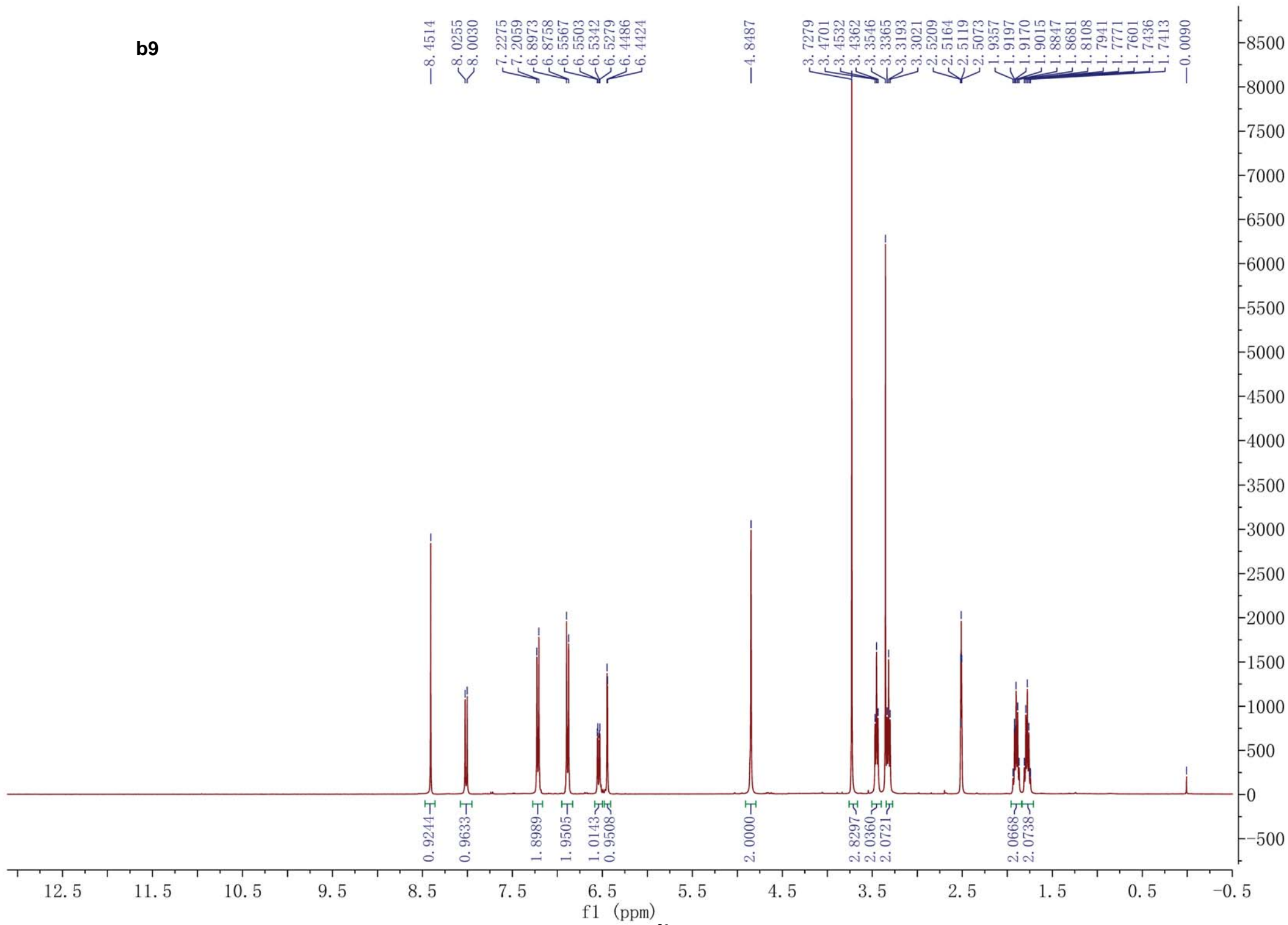


b8

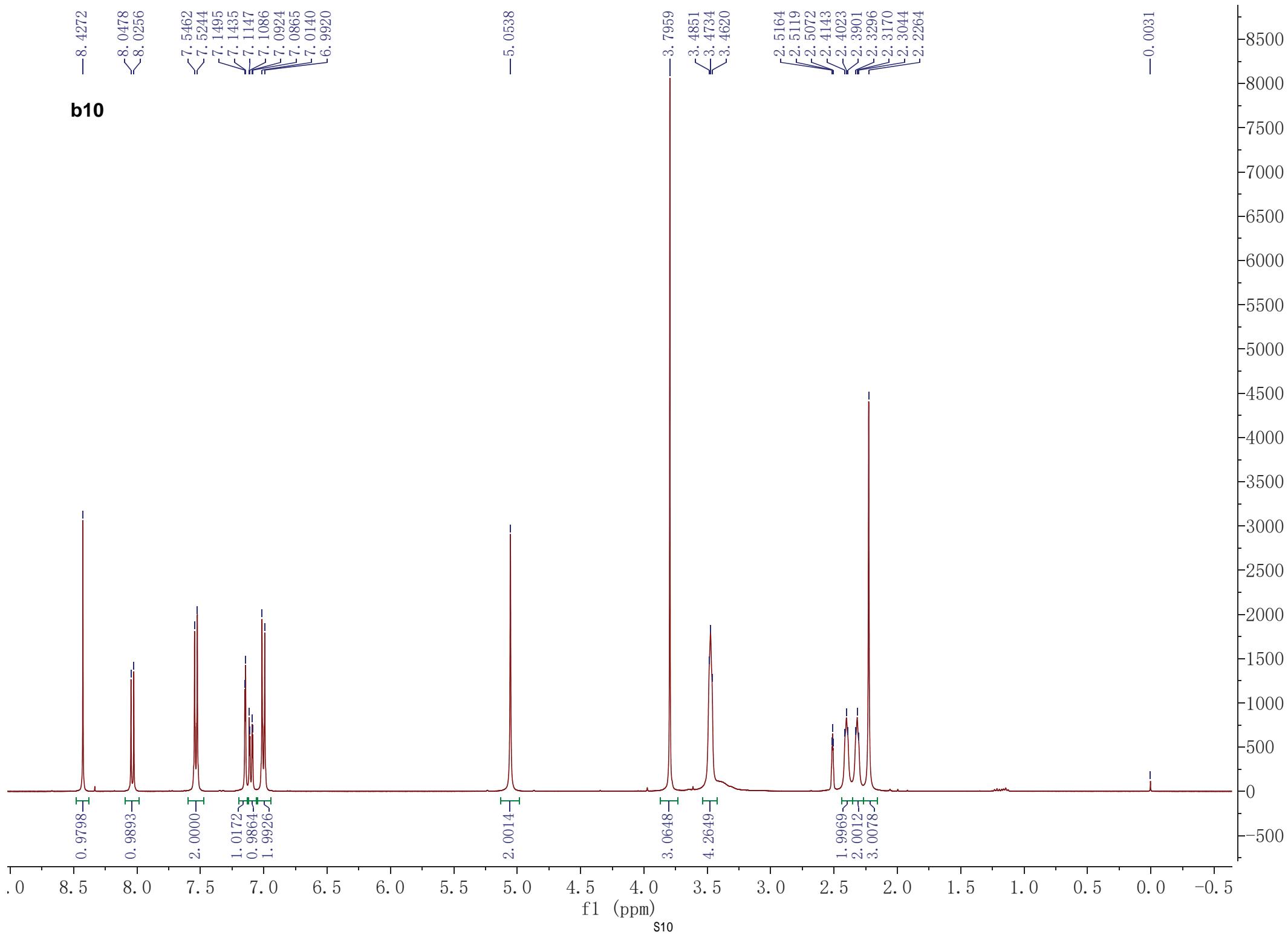




b9

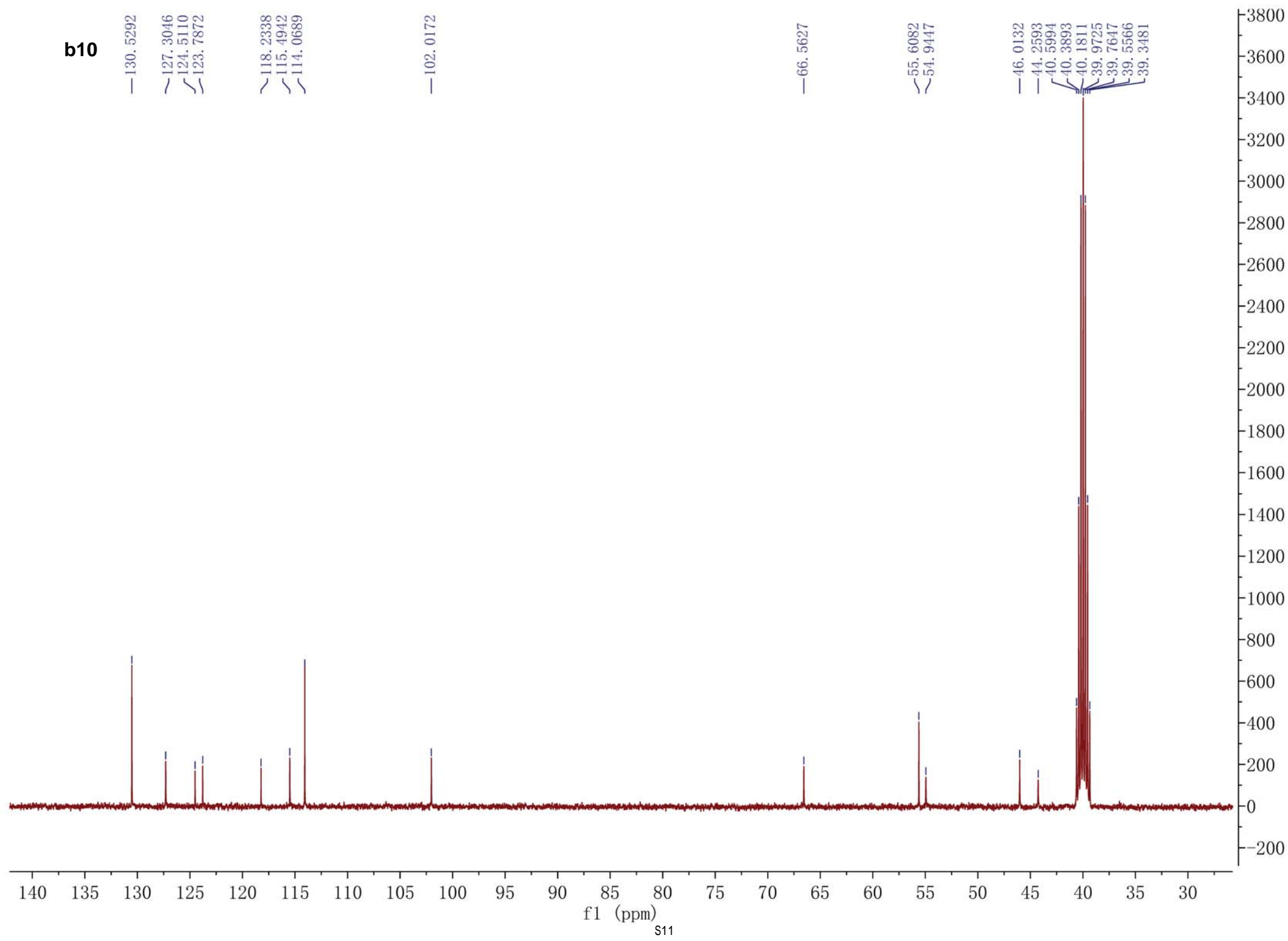


**b10**

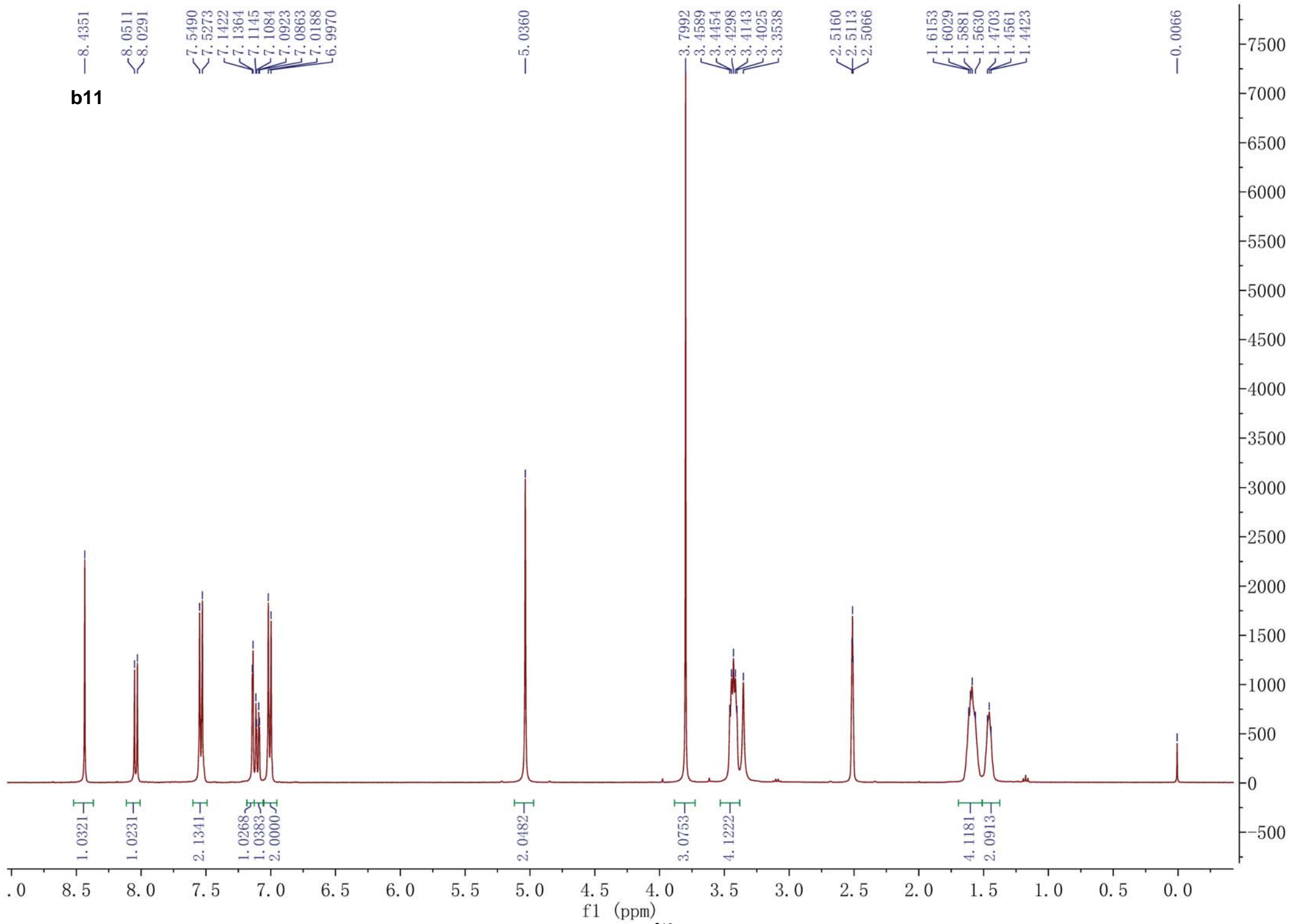


**b10**

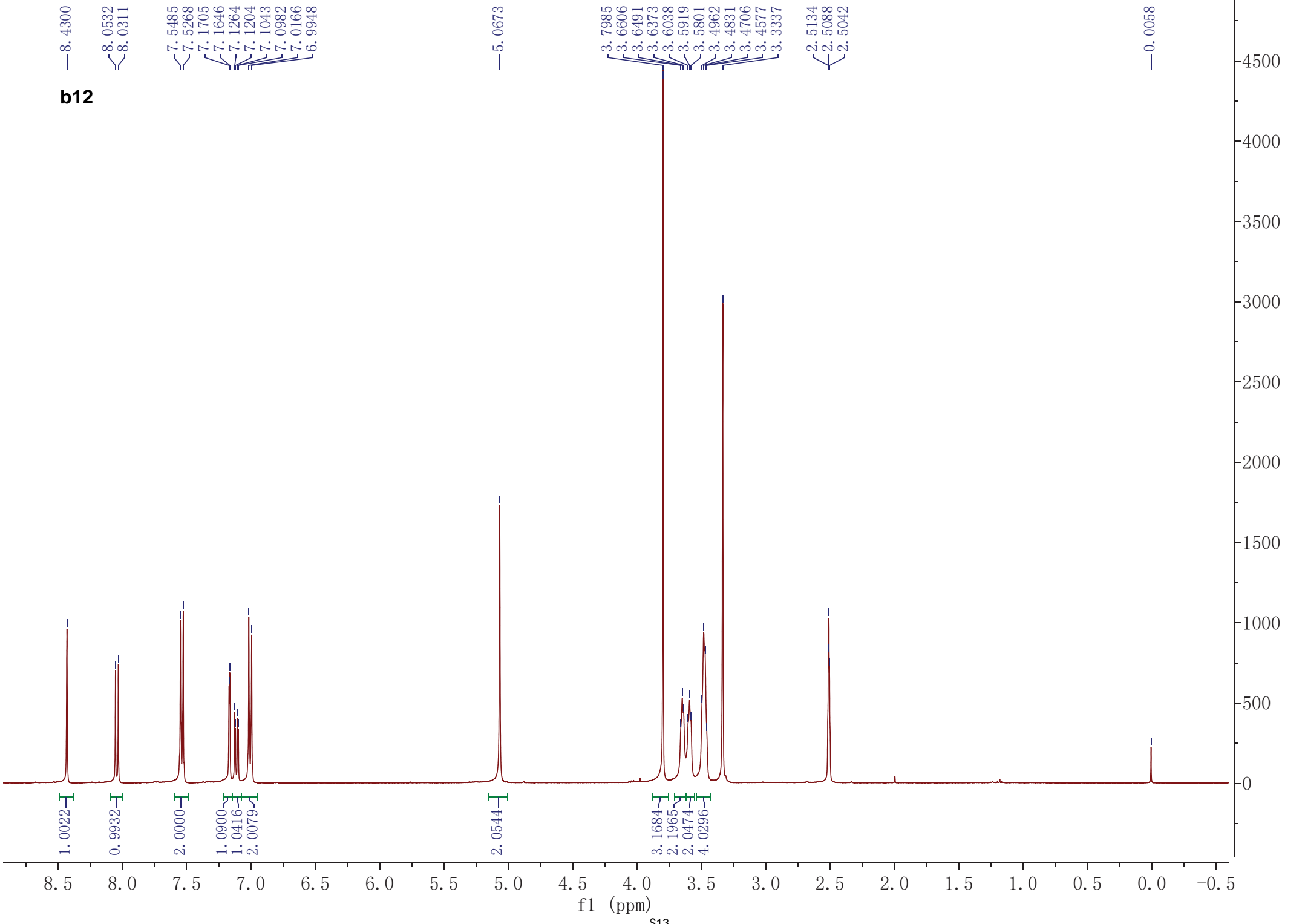
- 130.5292
- ~ 127.3046
- ~ 124.5110
- ~ 123.7872
- ~ 118.2338
- ~ 115.4942
- ~ 114.0689
- 102.0172
- 66.5627
- ~ 55.6082
- ~ 54.9447
- 46.0132
- 44.2593
- 40.5994
- ~ 40.3893
- ~ 40.1811
- ~ 39.9725
- ~ 39.7647
- ~ 39.5566
- ~ 39.3481



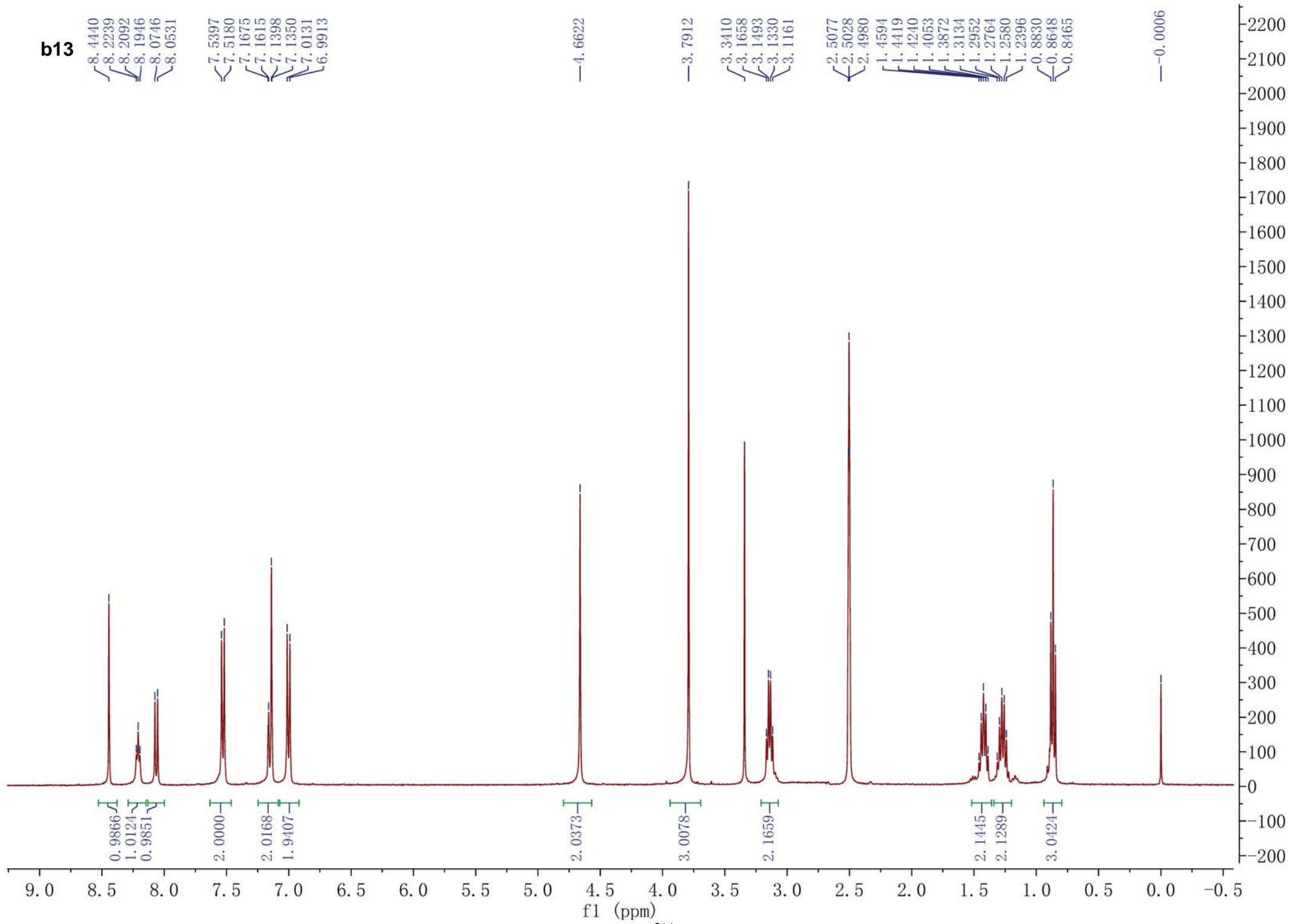
**b11**



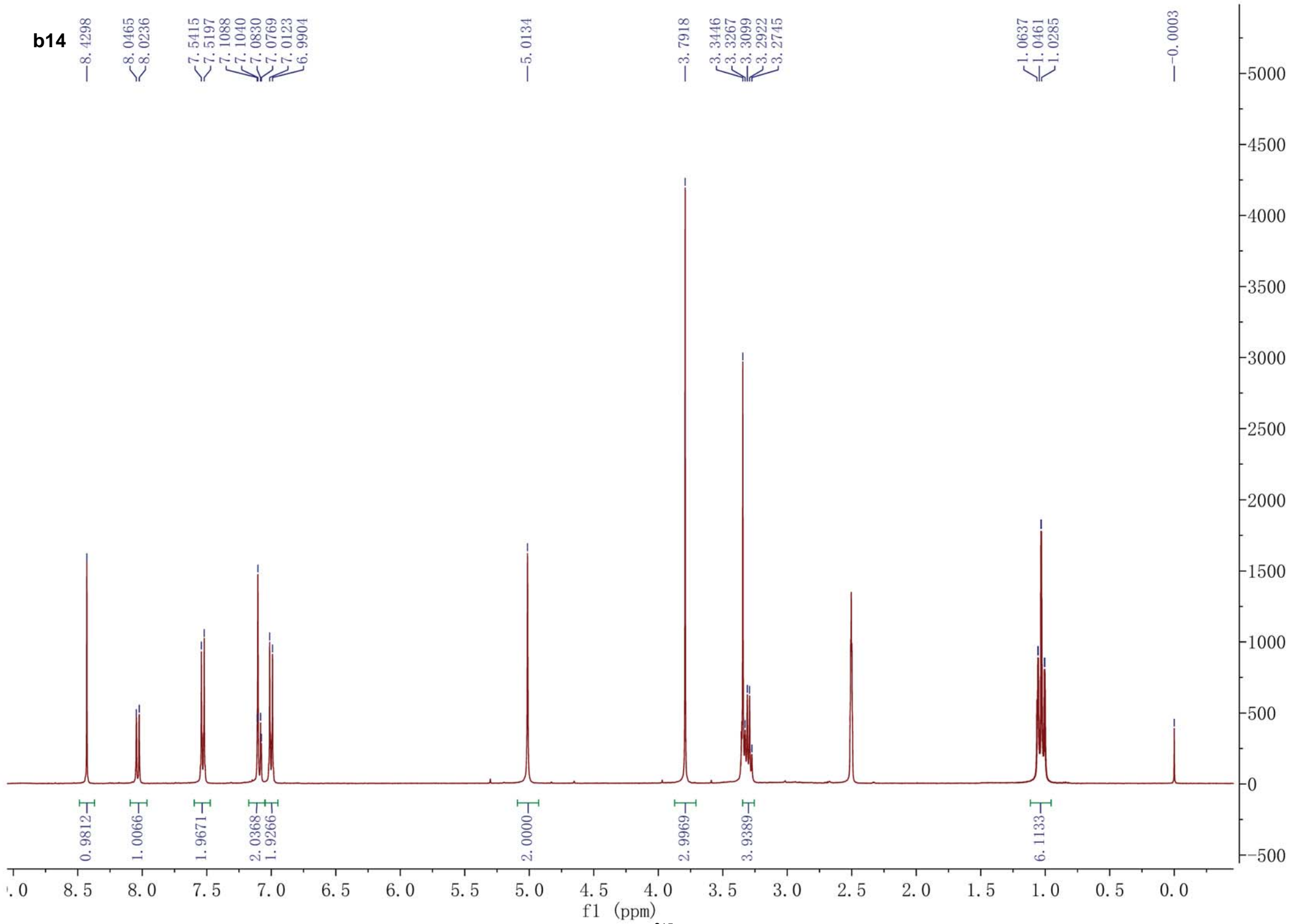
**b12**



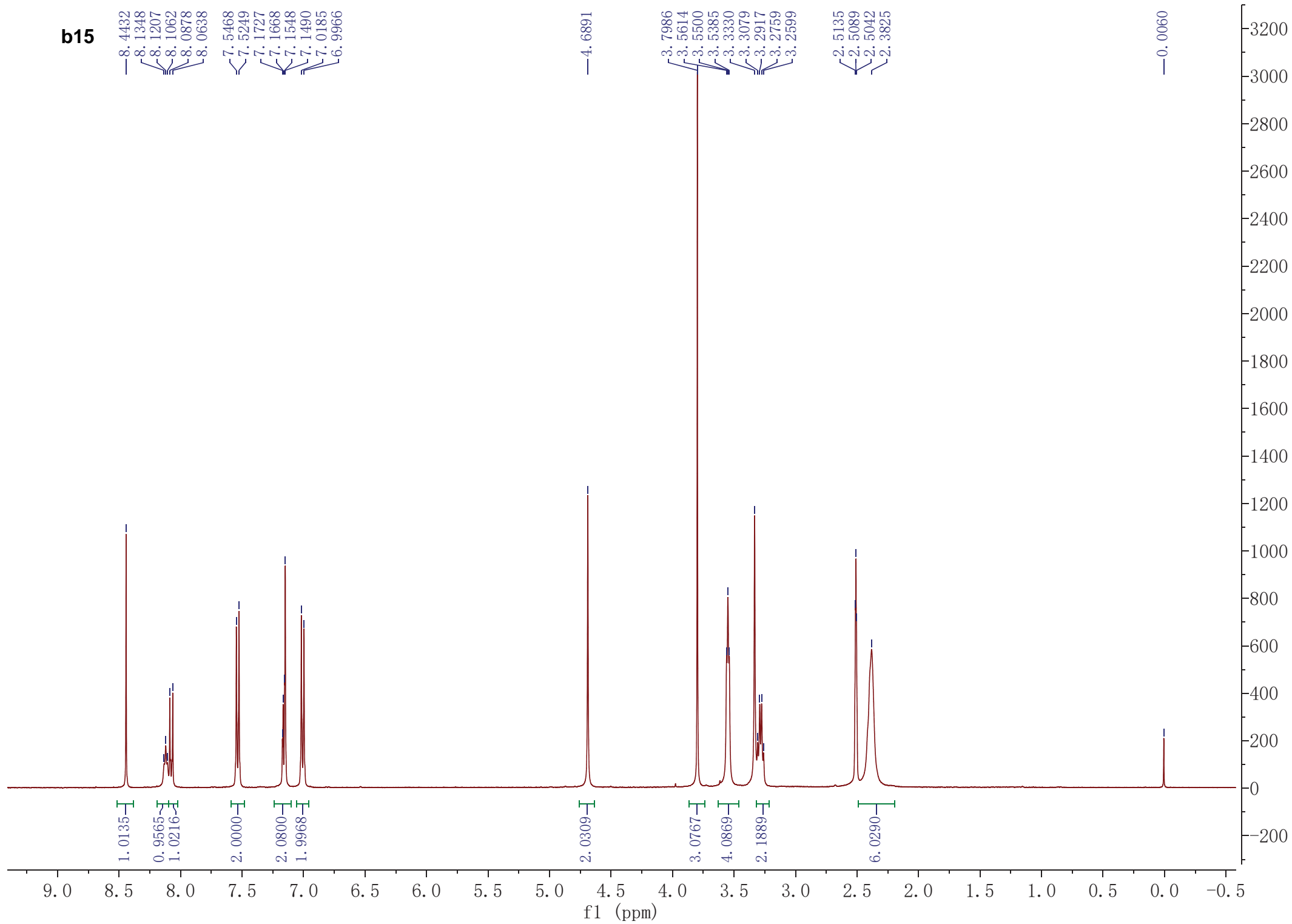
**b13**



**b14**



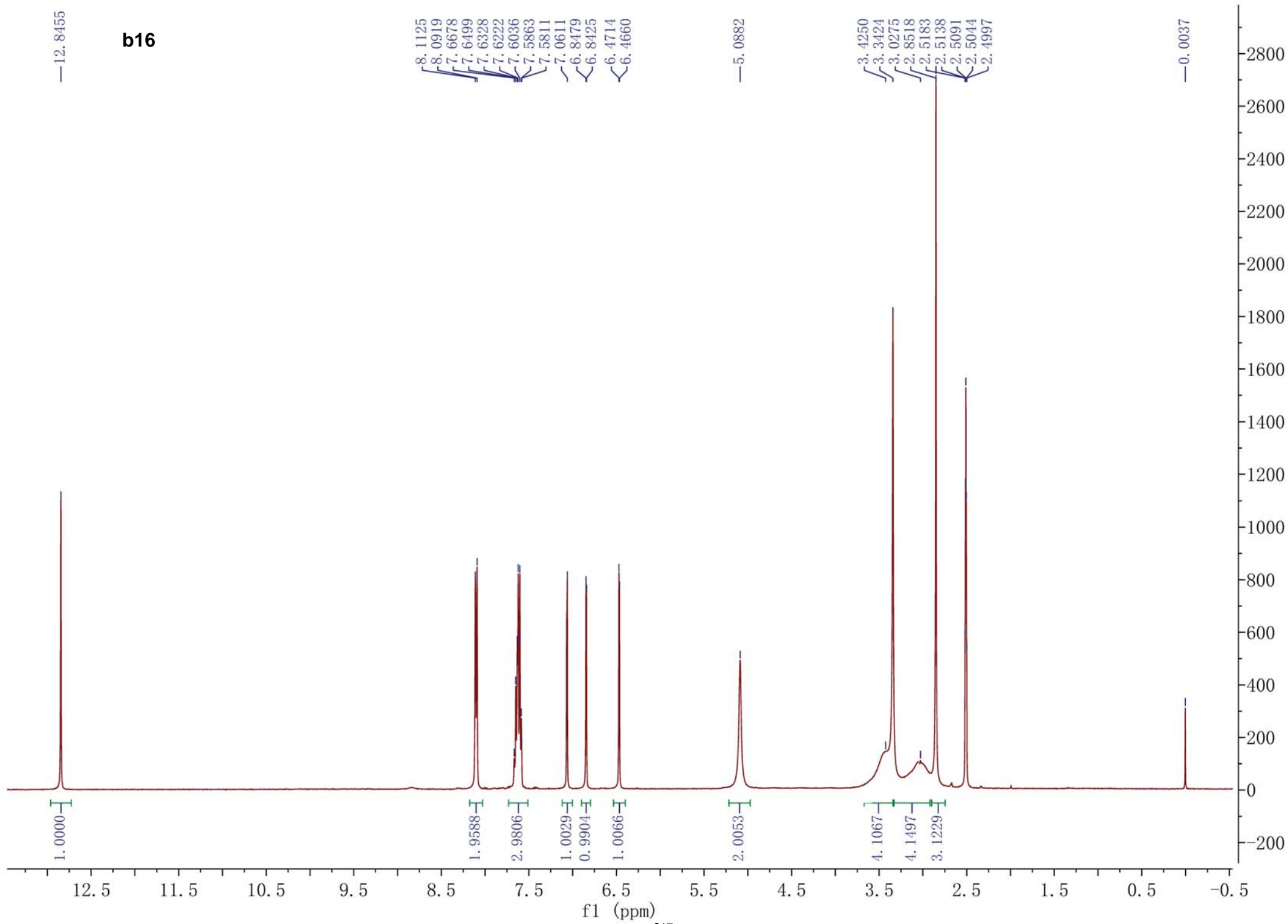
**b15**



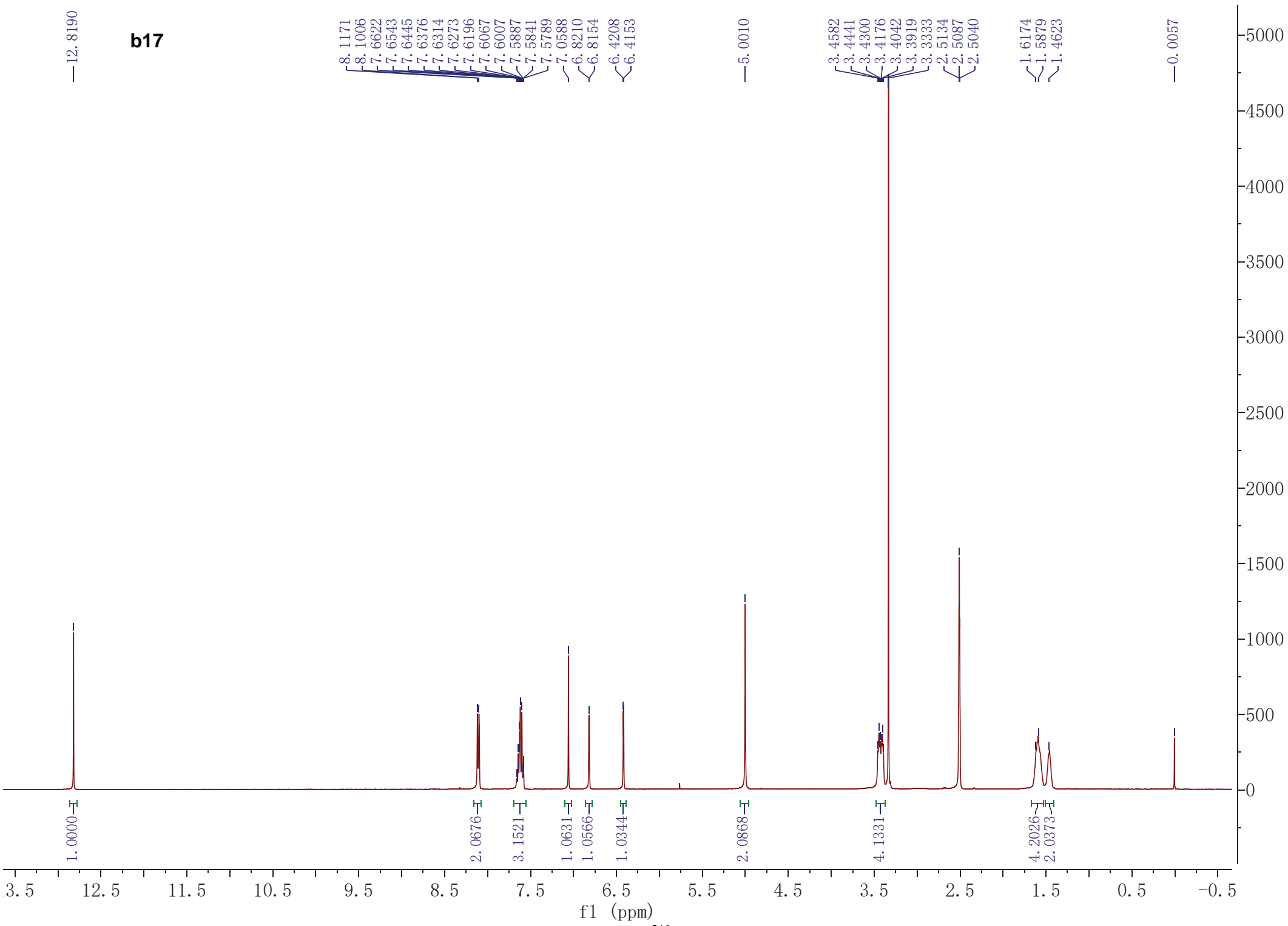


—12.8455

**b16**

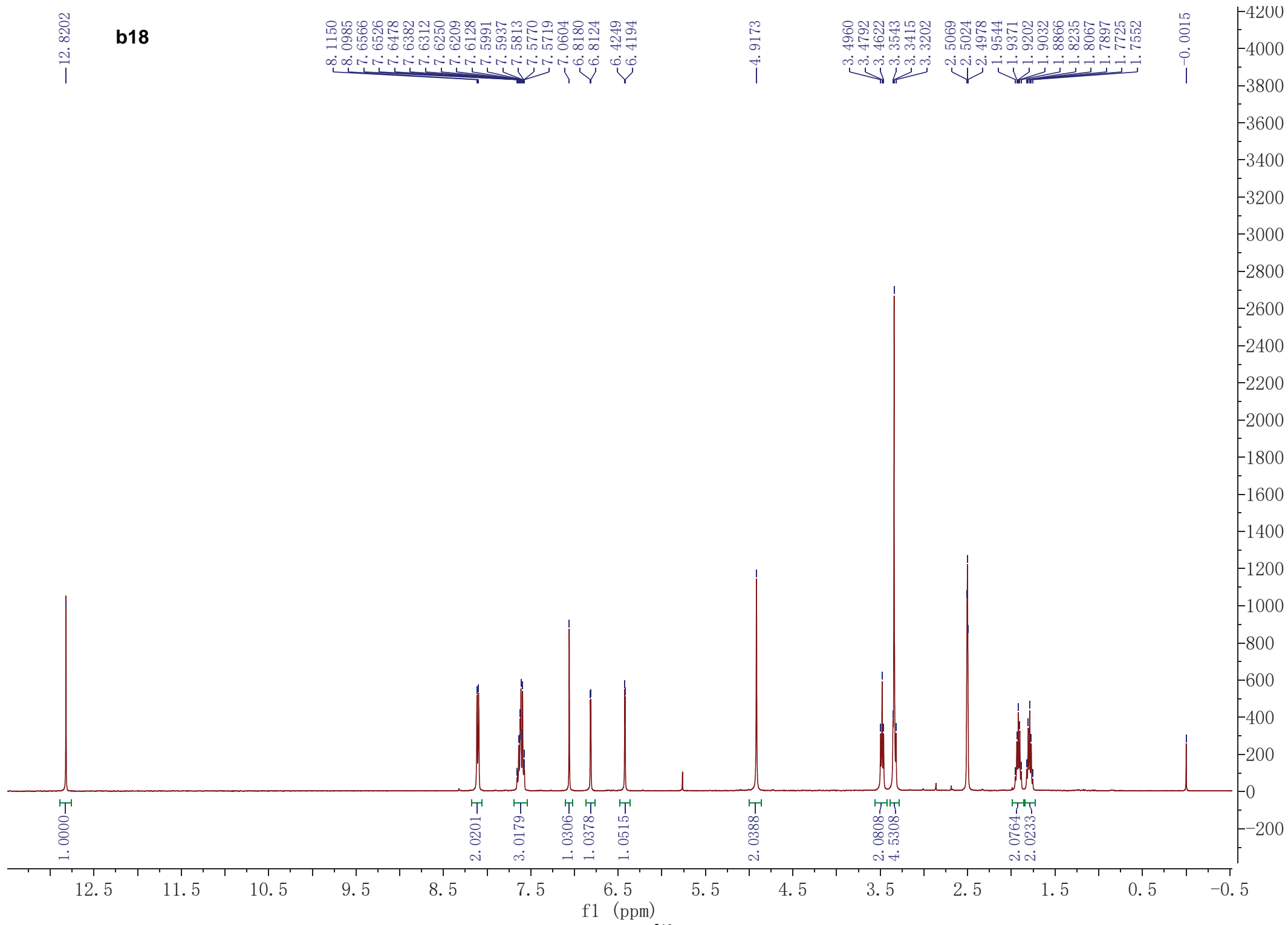


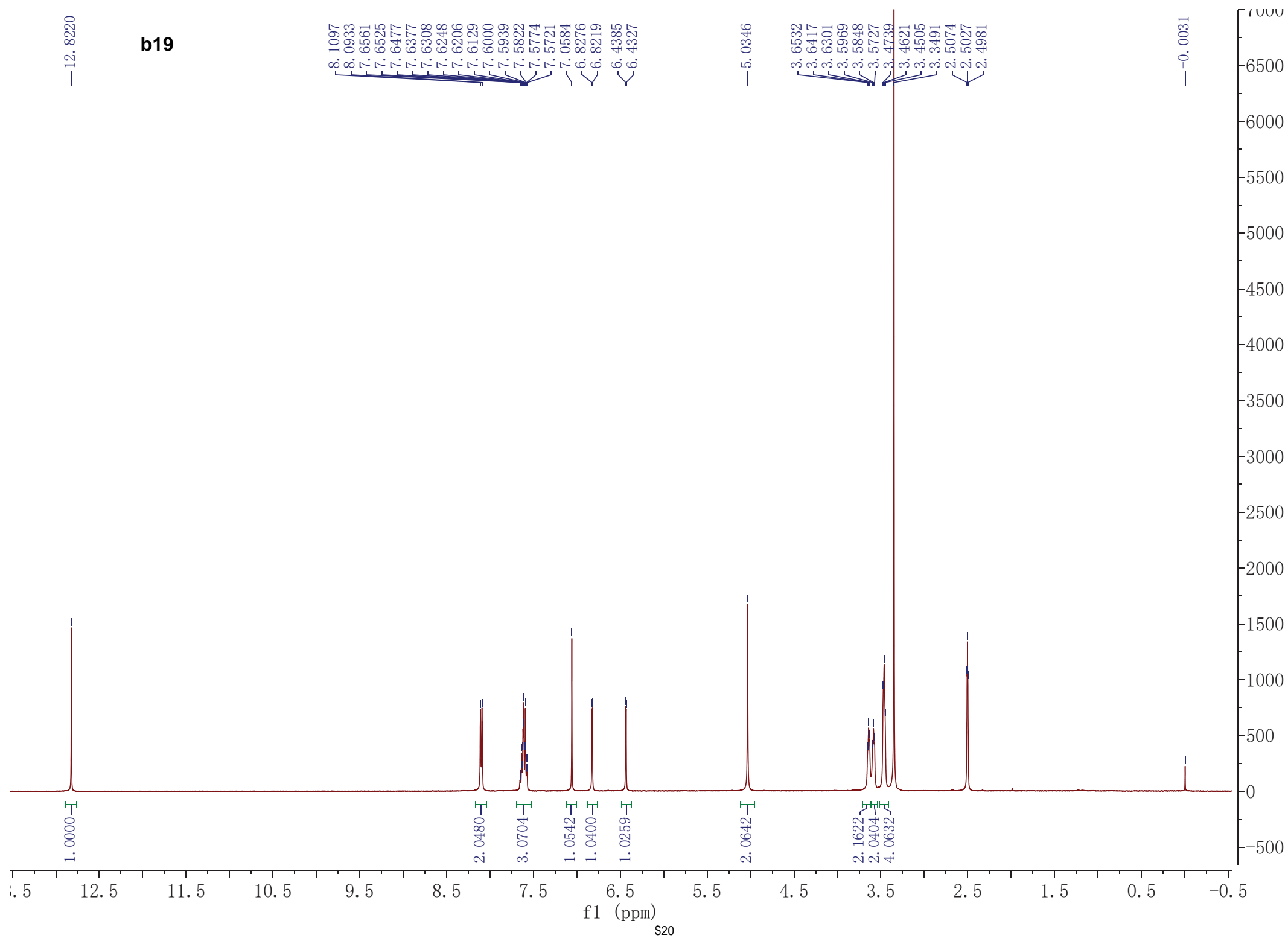
**b17**



— 12.8202

**b18**





**b19**

f1 (ppm)

s20

—12.8316

**b20**

