

Supporting Information

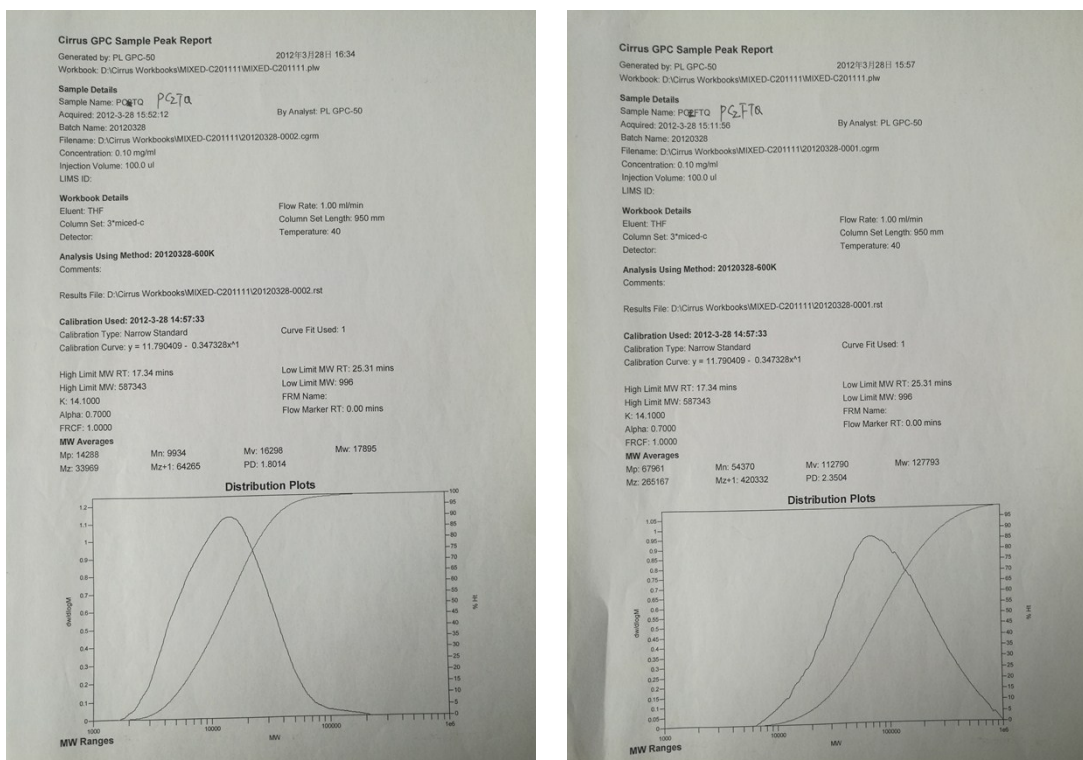


Fig. S1. GPC curves

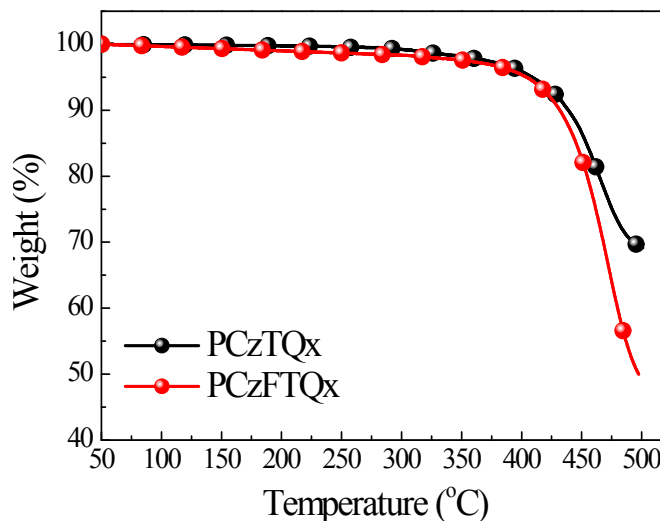


Fig. S2. Thermal gravimetric analysis curves of the polymers with a heating rate of 10 °C/min in nitrogen.

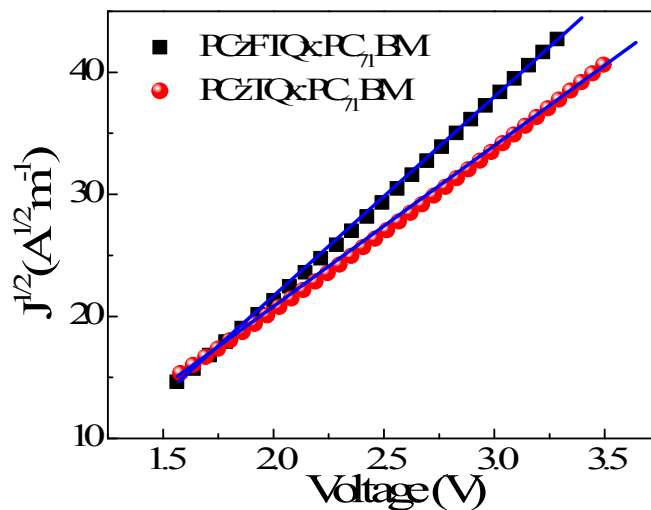


Fig. S3. $J^{1/2} \sim V$ characteristics of PCzTQx and PCzFTQx hole-only devices measured at ambient temperature.

Table S1. The SCLC mobilities of PCzTQx and PCzFTQx blend films.

Active layers	Thickness (nm)	Hole mobility ($\text{cm}^2 \text{V}^{-1} \text{s}^{-1}$)
PCzTQx :PC ₇₁ BM	81	3.12×10^{-5}
PCzFTQx :PC ₇₁ BM	87	6.18×10^{-5}