

## Supplementary Information

### **Incorporating isosorbide as the chain extender improves mechanical properties on linear biodegradable polyurethanes as potential bone regeneration materials**

Yufei Ma<sup>a,b</sup>, Juan Liu<sup>a,b</sup>, Min Luo<sup>a</sup>, Juan Xing<sup>a</sup>, Jinchuan Wu<sup>a</sup>, Haobo Pan<sup>b</sup>, Changshun Ruan<sup>b,\*</sup>, Yanfeng Luo<sup>a,\*</sup>

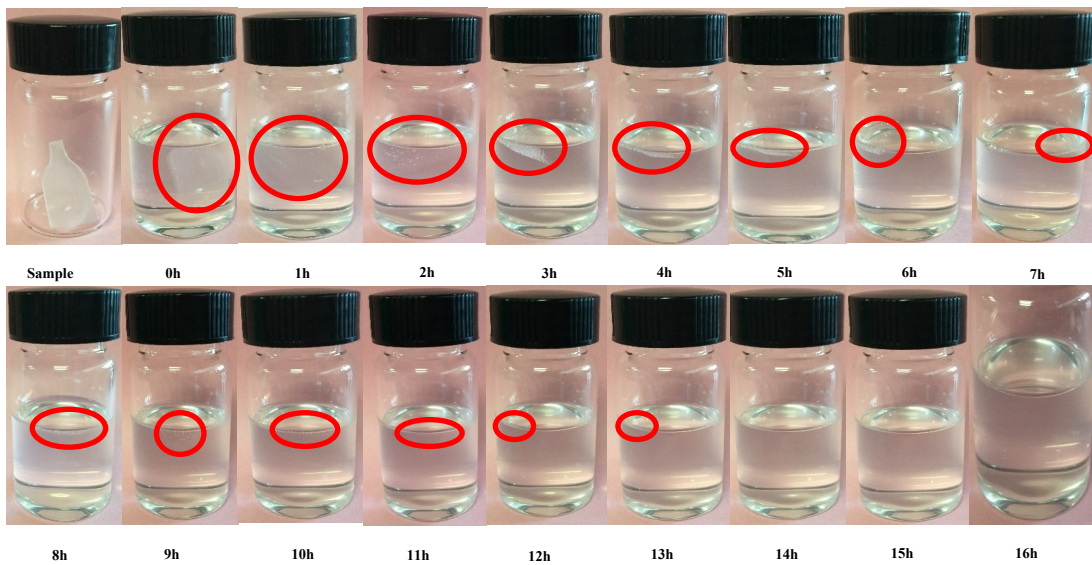
<sup>a</sup> Key Laboratory of Biorheological Science and Technology, Ministry of Education, and Research Center of Bioinspired Materials Science and Engineering College of Bioengineering, Chongqing University, Chongqing 400030, China

<sup>b</sup> Center for Human Tissue and Organs Degeneration, Institute Biomedical and Biotechnology, Shenzhen Institutes of Advanced Technology, Chinese Academy of Sciences Shenzhen 518055, China

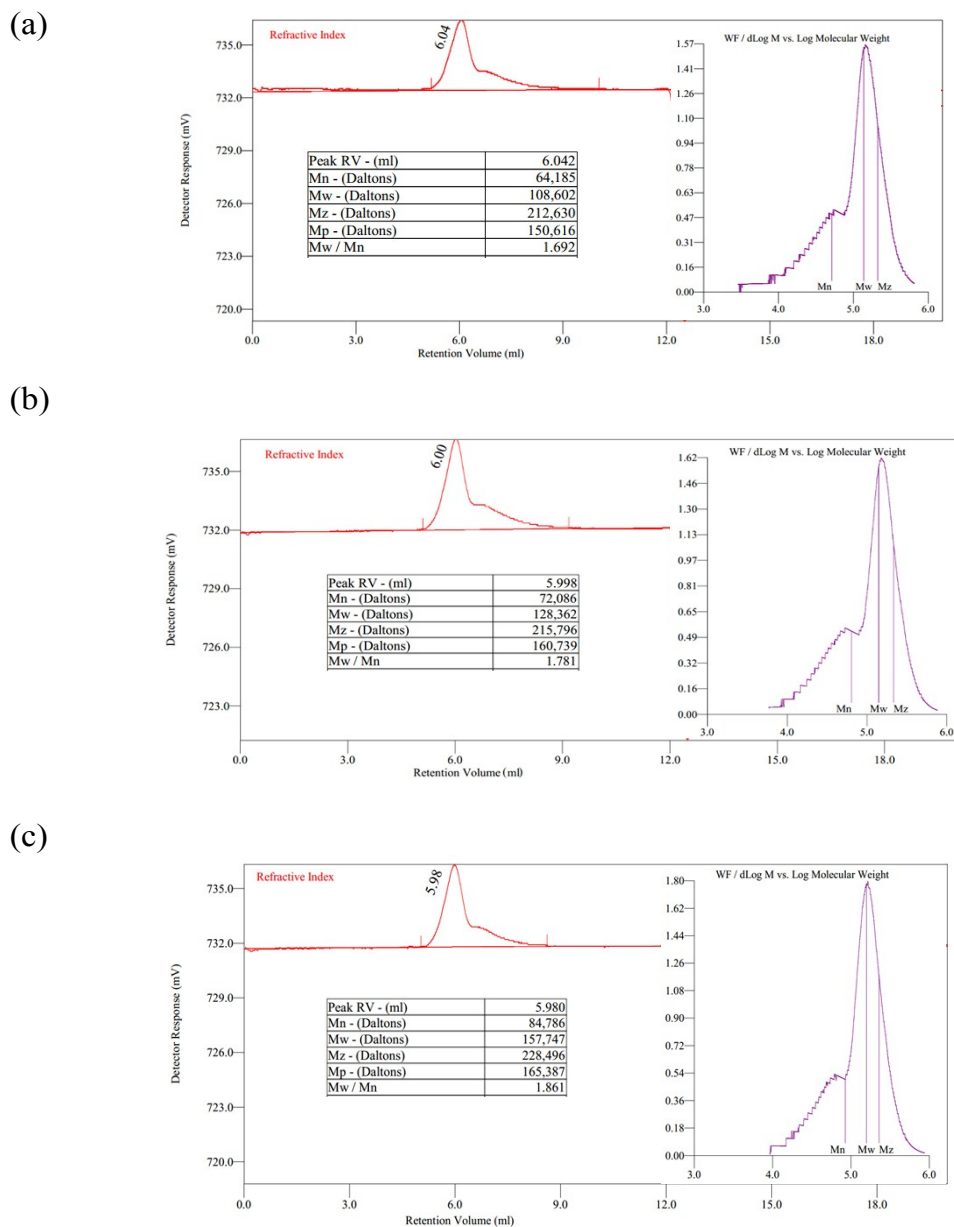
\*: Corresponding author:

Changshun Ruan: cs.ruan@siat.ac.cn      Tel: 0086 755 86585250

Yanfeng Luo: yfluo@cqu.edu.cn      Tel: 0086 023 65102509



**Figure S1 Visual observation of the solubility of ISO-PU1.5 in chloroform.**  
ISO-PU1.5 dissolved rapidly in chloroform during the first 8 h of immersion; the complete dissolution happened after 16 h of immersion.



**Figure S2. GPC curves of various ISO-PUs: (a) ISO-PU1.1; (b) ISO-PU1.3; (c) ISO-PU1.5.**