

A reconstructed graphite-like carbon micro/nano-structure with higher capacity and comparative voltage plateau of graphite

Zhen Ma,^a Yan Cui,^a Xin Xiao,^a Yaoming Deng,^{ab} Xiaona Song,^{ab} Xiaoxi Zuo,^a

Junmin Nan^{*a}

- a. School of Chemistry and Environment, South China Normal University;
Guangzhou Key Laboratory of Materials for Energy Conversion and Storage,
Guangzhou 510006, PR China
- b. Dongguan McNair New Power Co. Ltd. , Dongguan 523000, PR China

*Corresponding author: Junmin Nan

School of Chemistry and Environment, South China Normal University

College town, Guangzhou 510006, China

E-mail: jmnan@scnu.edu.cn; Tel.: +86-20-39310255; Fax: +86-20-39310187

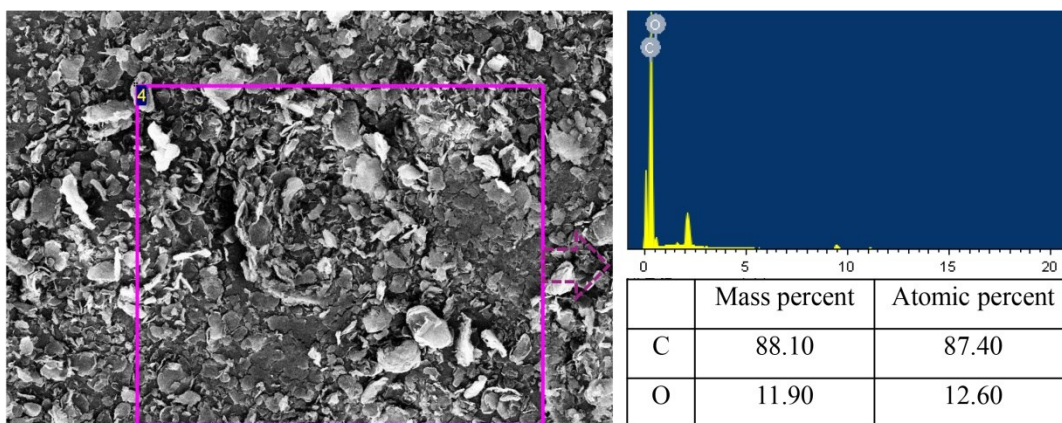


Figure S1. EDX spectra of r-GC and its element composition

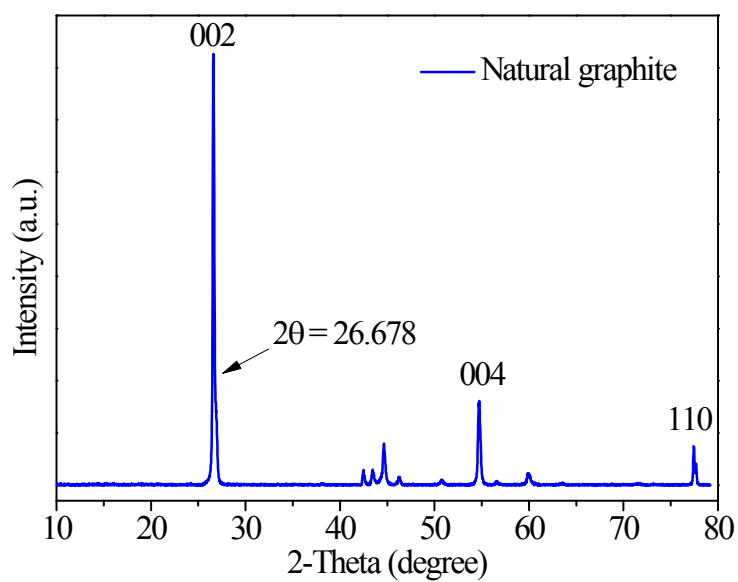


Figure S2. XRD pattern of natural graphite