

Electrical supplementary information (ESI)

## Mussel Adhesive Protein Inspired Coating on Temperature-Responsive Hydrogels for Cell Sheet Engineering

Yu Bin Lee<sup>a,b,†</sup>, Young Min Shin<sup>a,†</sup>, Eun Mi Kim<sup>a,b</sup>, Joong-yup Lee<sup>a,b</sup>, Jangsoo Lim<sup>a,b</sup>, Seong Keun Kwon<sup>c</sup>, and Heungsoo Shin<sup>a, b,\*</sup>

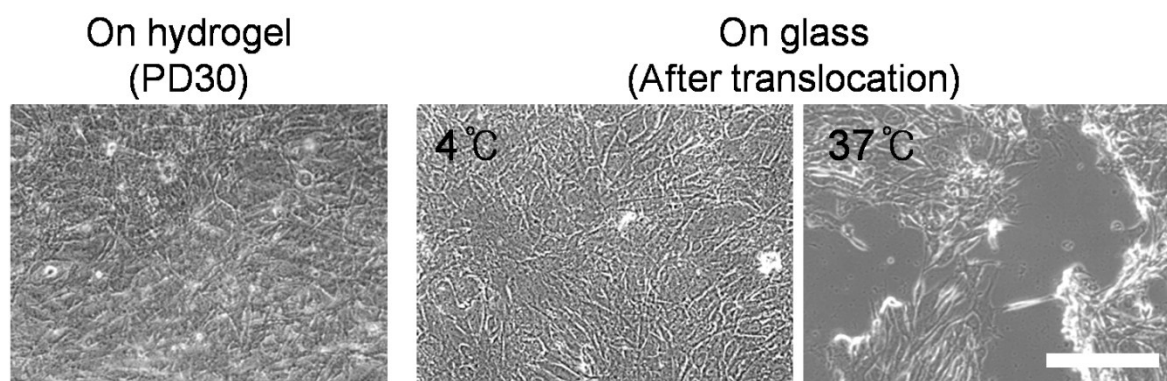


Fig. S1 Images of cell sheet during translocation process under different temperature (scale bar = 250  $\mu\text{m}$ )

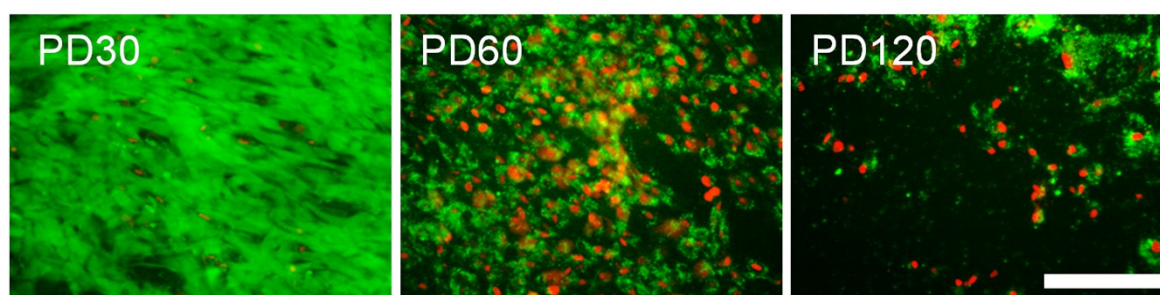


Fig. S2 Live/dead assay image of cell sheets from hydrogels with different preparation conditions (scale bar = 100  $\mu\text{m}$ ).