

Supplementary Information: Dipolar glass and magneto-electric coupling within a π -stacked organic system

Adam Berlie, Ian Terry, Yun Liu and Marek Szablewski

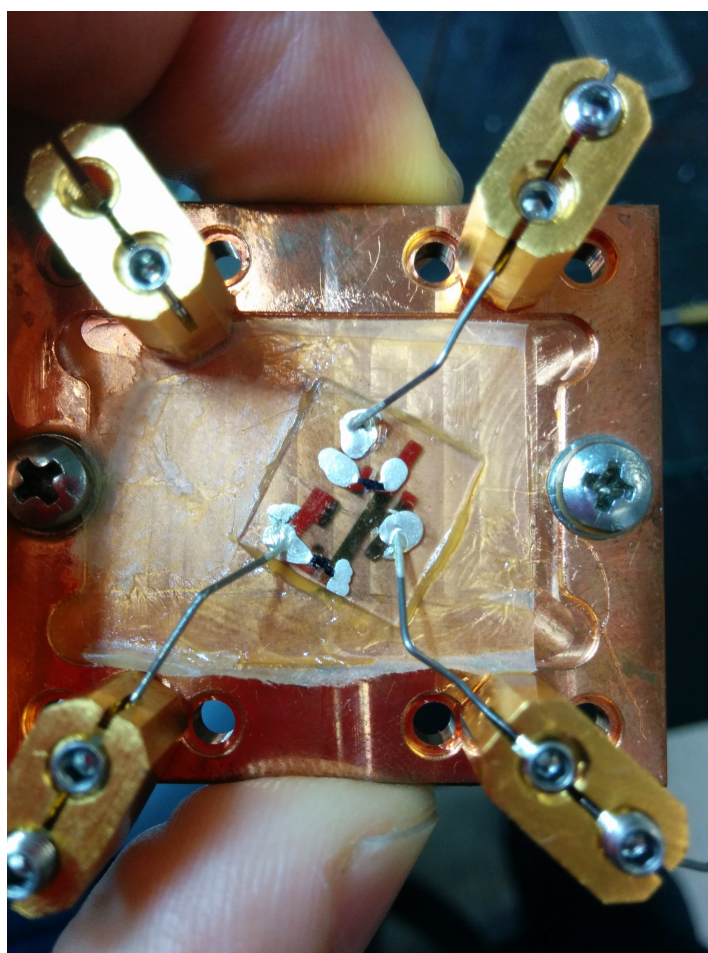


Figure 1: Example of a sapphire wafer with gold contacts used to perform measurements on the TEA(TCNQ)₂ needles.

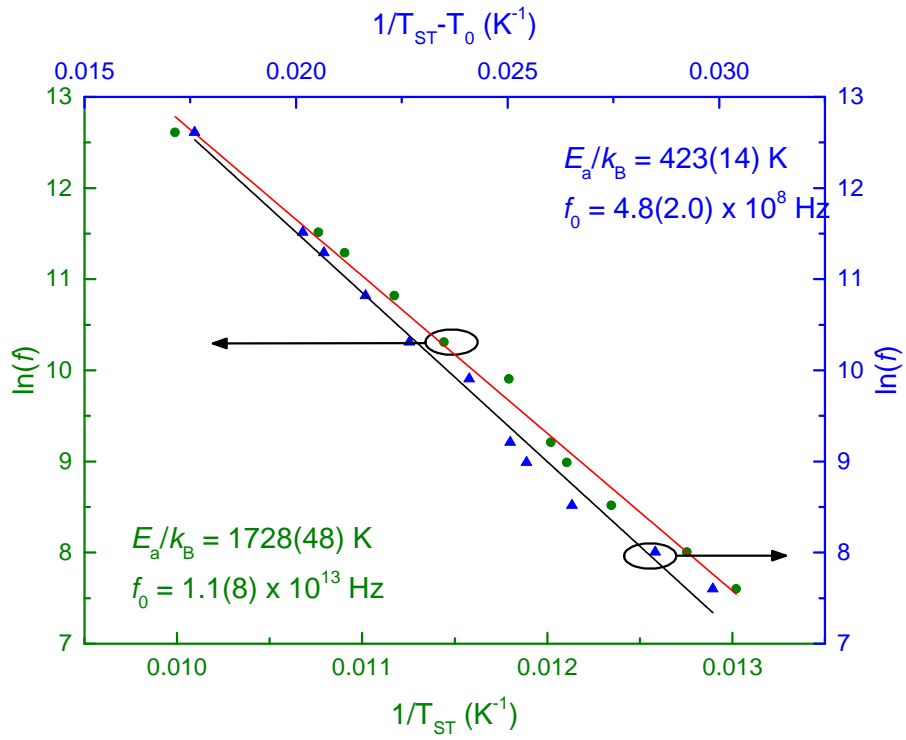


Figure 2: Analysis of the frequency dependence of the anomaly in the dielectric data associated with singlet-triplet transition (T_{ST}) using both an Arrhenius and Vogel-Fulcher behaviour. *Note, all errors are given in brackets.*