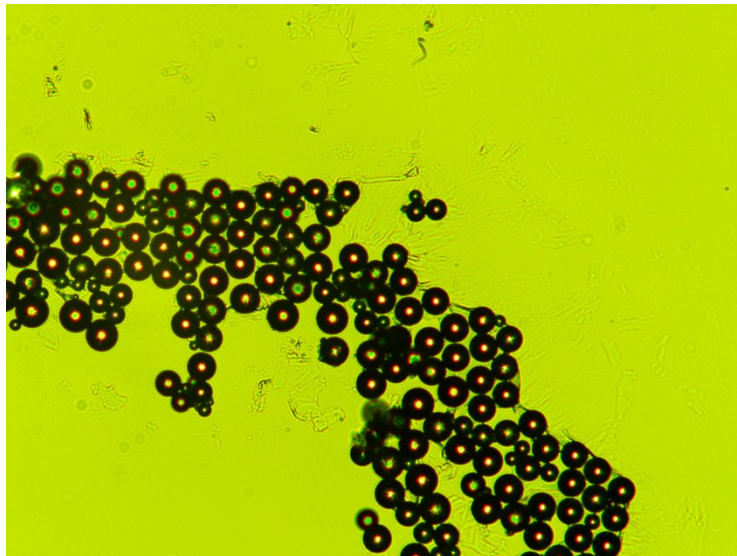


Electronic Supplementary Information

The micrograph of prepared microbeads for size distribution



The data of diameters of prepared microbeads

20.736
20.808
21.006
21.087
21.402
21.411
21.69
21.816
21.816
21.942
21.942
21.996
22.05
22.14
22.212
22.293
22.329
22.347
22.383
22.383
22.509
22.572
22.653
22.698
22.734
22.743
22.752
22.779
22.833
22.887
22.941
22.941
22.968
22.986
23.103
23.112
23.175
23.202
23.211
23.319
23.319

23.346
23.355
23.382
23.4
23.526
23.535
23.553
23.562
23.607
23.76
23.769
23.814
23.85
23.877
23.922
23.931
23.931
23.967
23.994
24.174
24.183
24.21
24.309
24.507
24.507
24.561
24.588
24.705
24.741
24.759
24.795
24.903
24.921
24.975
25.029
25.191
25.227
25.245
25.245
25.335
25.614
25.668
26.172

26.199
26.244
26.433
26.505
26.937