

## Supporting Information for Effect of melt and solution electrospinning on the formation and structure of poly(vinylidene fluoride) fibres

Hanako Asai,\* Marina Kikuchi, Naoki Shimada and Koji Nakane

Frontier Fiber Technology and Science, Graduate School of Engineering, University of Fukui, 3-9-1  
Bunkyo, Fukui, 910-8507, Japan

E-mail: h\_asai@u-fukui.ac.jp

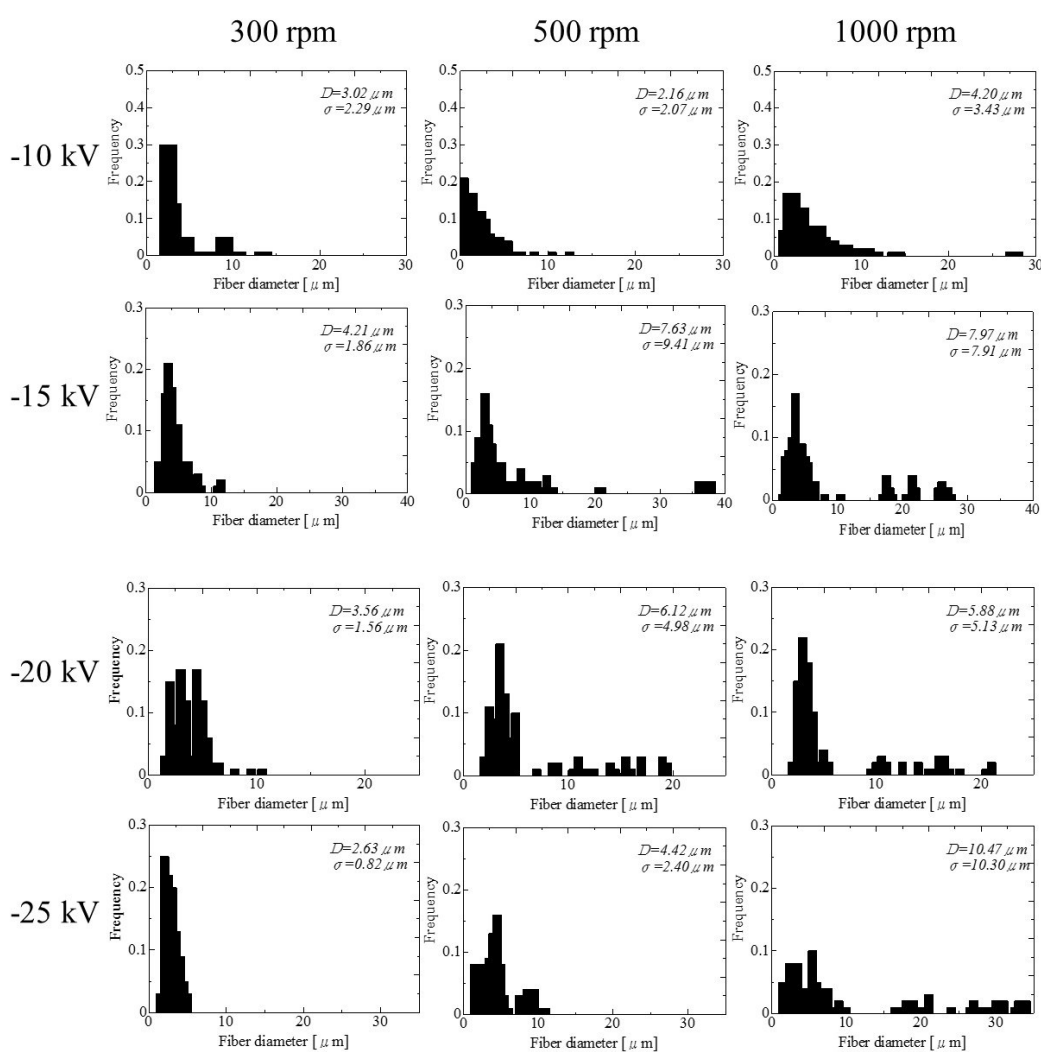
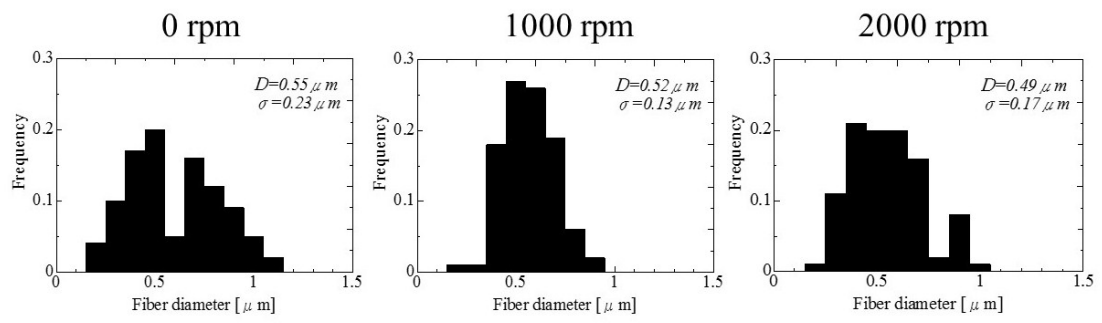


Fig.S1 Histograms for the diameters of the M-ES fibres.



**Fig.S2** Histograms for the diameters S-ES fibres.