

## Supplementary data

# Highly sensitive electrochemical determination of captopril using CuO modified ITO electrode: The effect of in-situ grown nanostructures over signal sensitivity

Figure S1

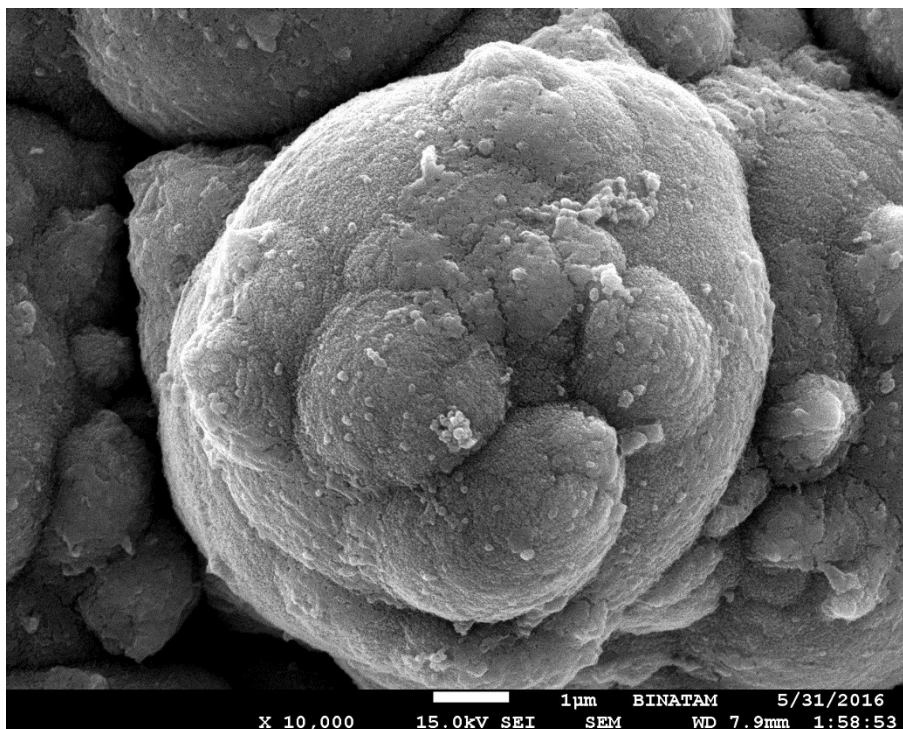


Figure S1 HR-SEM image of the CuO prepared without the application of malonic acid as effective template

Figure S2

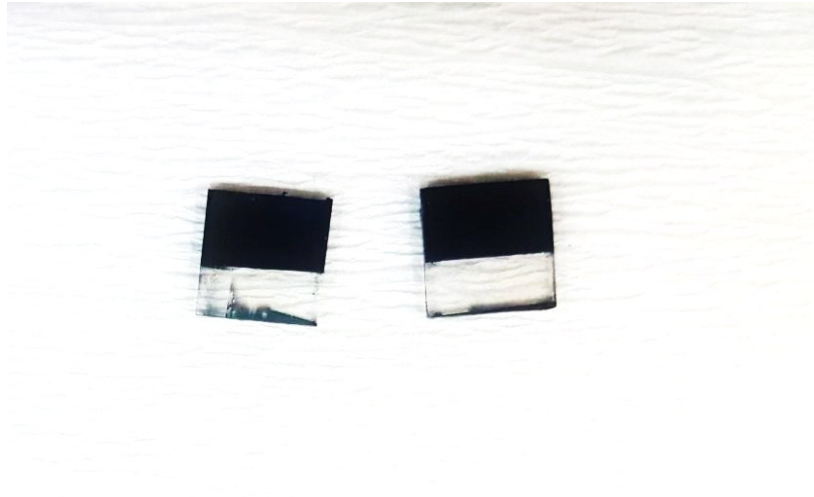
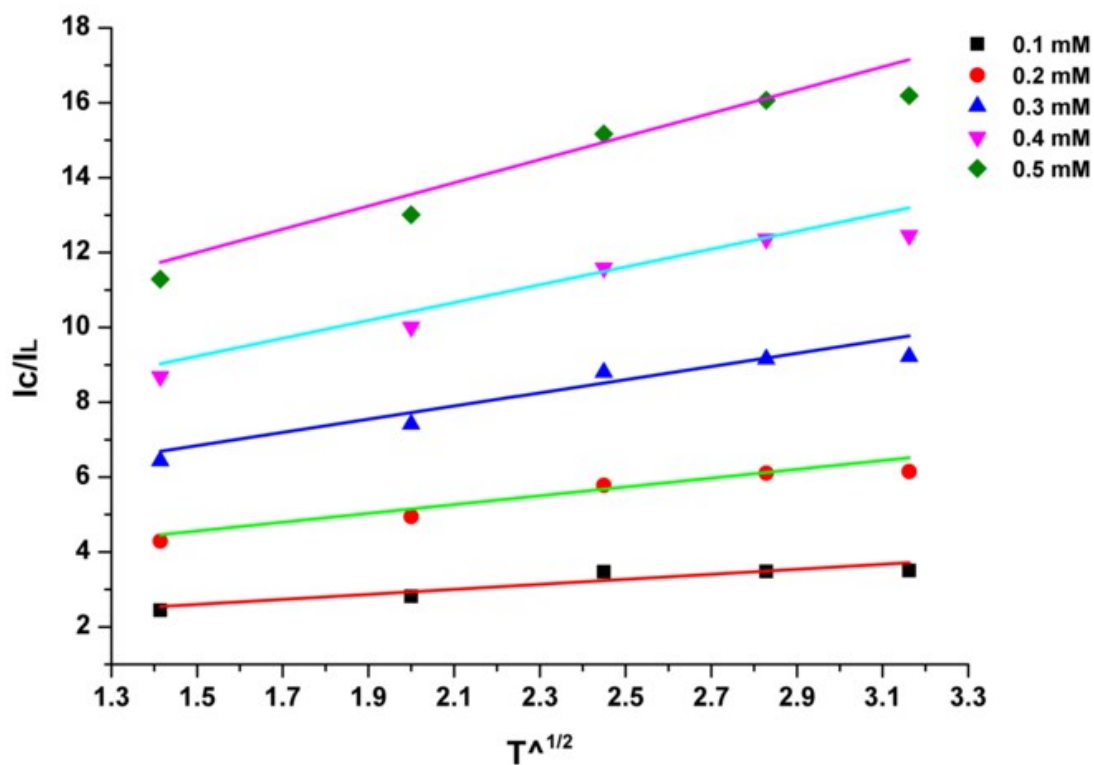


Figure S2 microscopic view of the modified ITO electrodes

Figure S3



**Figure S3** Linear fit analysis for the graphs plotted between  $I_c/I_L$  and  $t^{-1/2}$  against CAP concentration in range of 0.1 to 0.5 mM

Figure S4

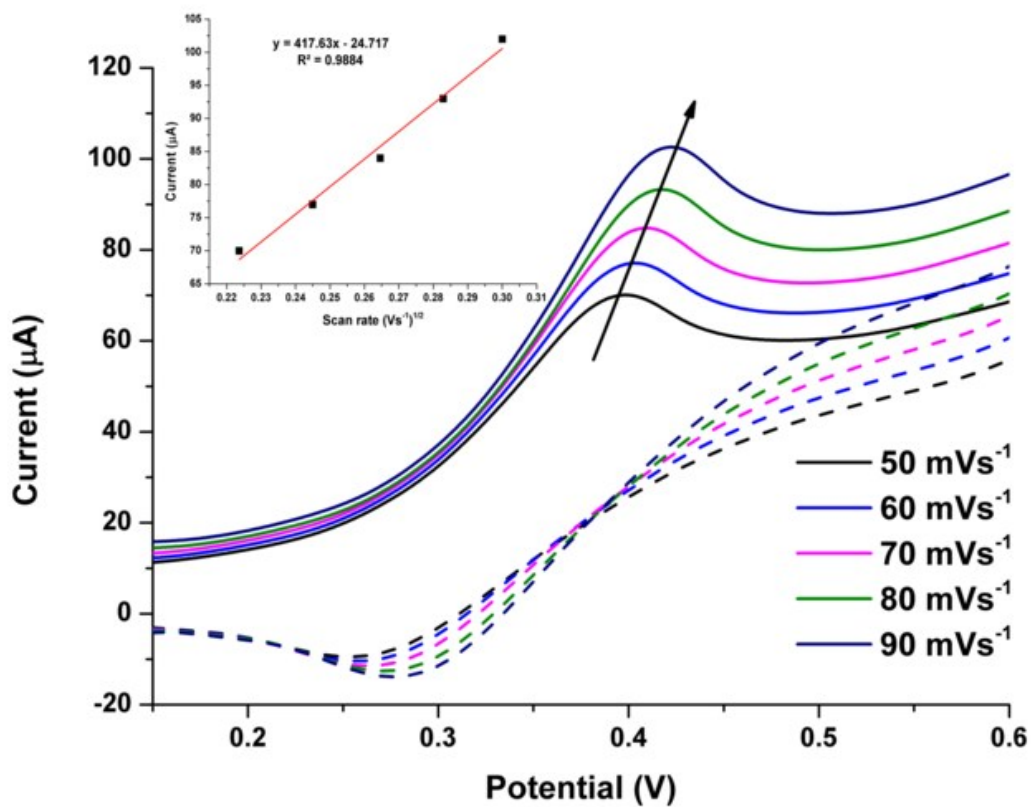


Figure S4 Scan rate measurement for ITO/CuO in range of 50 to 90 mVs<sup>-1</sup> against 0.1 μM CAP within 0.1 M BRB (pH 4.5)