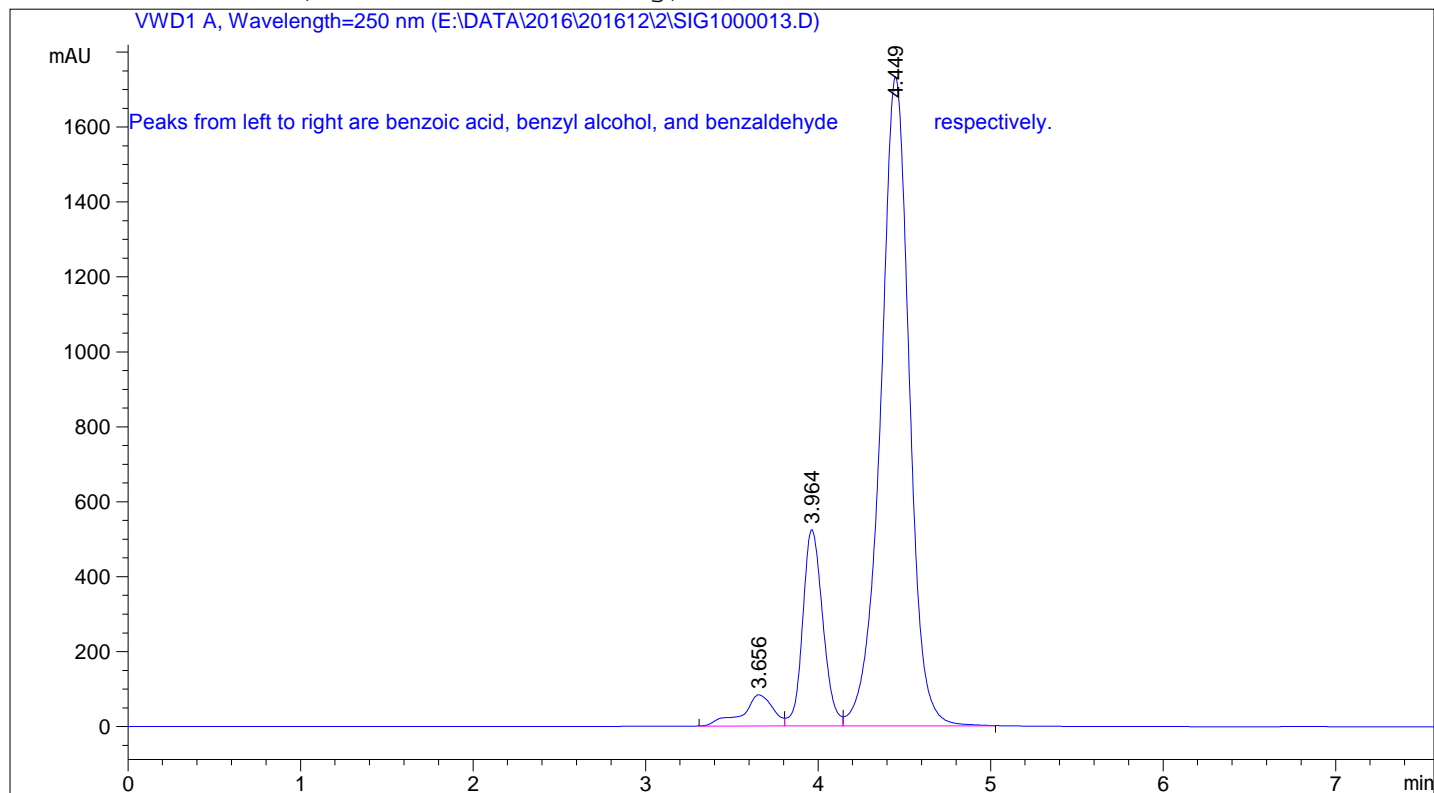


Data File E:\DATA\2016\201612\2\SIG1000013.D

Sample Name: 5

=====  
Acq. Operator : ZLL  
Acq. Instrument : Instrument 1 Location : Vial 1  
Injection Date : 2016-12-2 15:18:37  
Acq. Method : C:\CHEM32\1\METHODS\DEF\_LC.M  
Last changed : 2016-12-2 13:42:36 by ZLL  
(modified after loading)  
Analysis Method : C:\CHEM32\1\METHODS\DEF\_LC.M  
Last changed : 2016-12-2 15:25:29 by ZLL  
(modified after loading)



=====  
Area Percent Report  
=====

Sorted By : Signal  
Multiplier : 1.0000  
Dilution : 1.0000  
Use Multiplier & Dilution Factor with ISTDs

Signal 1: VWD1 A, Wavelength=250 nm

Peak #	RetTime [min]	Type	Width [min]	Area mAU*s	Height [mAU]	Area %
1	3.656	BV	0.1837	1033.52820	83.48224	4.0918
2	3.964	VV	0.1269	4262.67285	524.48297	16.8763
3	4.449	VB	0.1752	1.99621e4	1732.28943	79.0318

Totals : 2.52583e4 2340.25464

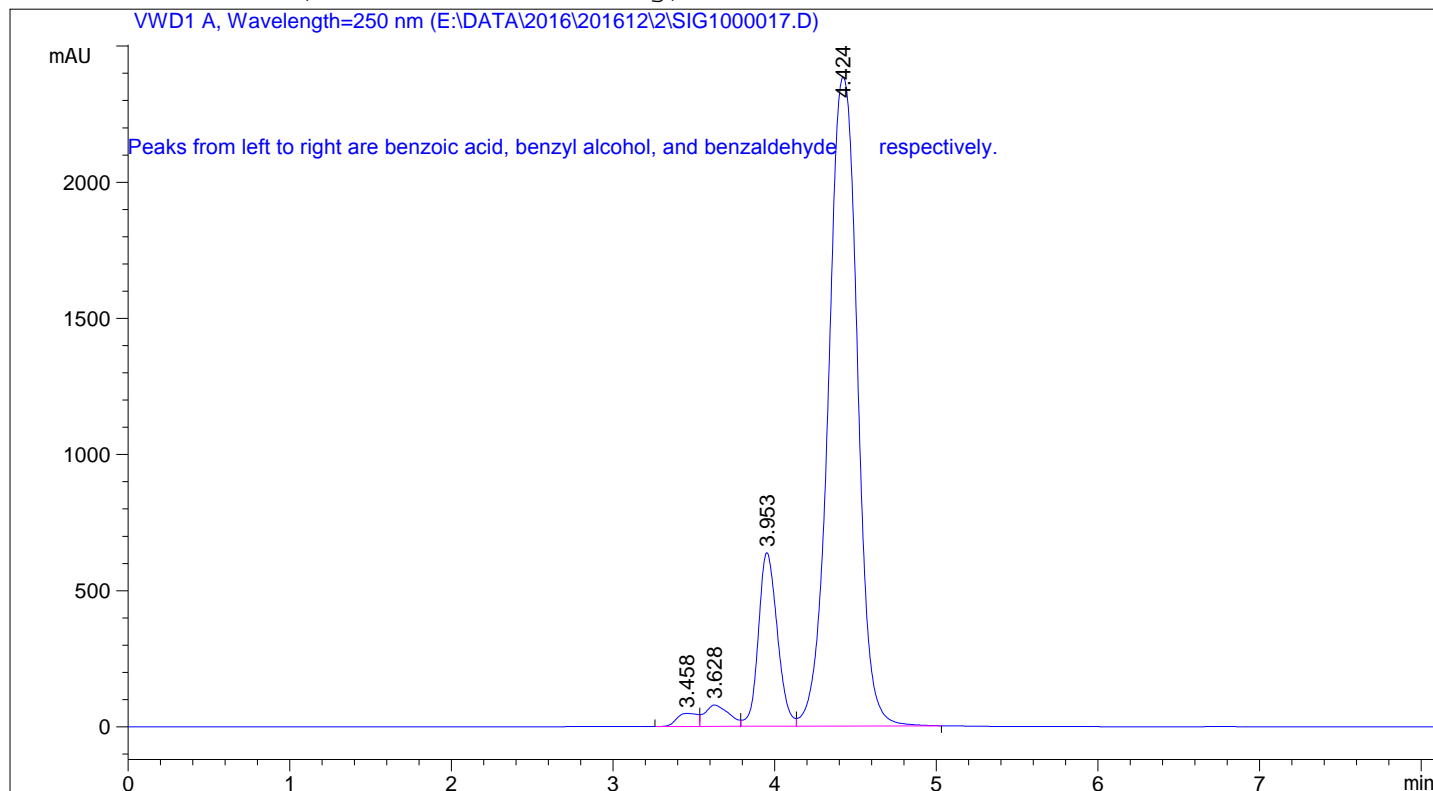
=====  
\*\*\* End of Report \*\*\*



Sample Name: 6

```

=====
Acq. Operator   : ZLL
Acq. Instrument : Instrument 1                Location : Vial 1
Injection Date  : 2016-12-2 15:50:57
Acq. Method     : C:\CHEM32\1\METHODS\DEF_LC.M
Last changed    : 2016-12-2 13:42:36 by ZLL
                  (modified after loading)
Analysis Method : C:\CHEM32\1\METHODS\DEF_LC.M
Last changed    : 2016-12-2 15:43:26 by ZLL
                  (modified after loading)
    
```



Area Percent Report

```

Sorted By      : Signal
Multiplier     : 1.0000
Dilution       : 1.0000
Use Multiplier & Dilution Factor with ISTDs
    
```

Signal 1: VWD1 A, Wavelength=250 nm

Peak #	RetTime [min]	Type	Width [min]	Area mAU *s	Height [mAU]	Area %
1	3.458	BV	0.1417	430.00388	47.66156	1.1924
2	3.628	VV	0.1627	812.51129	78.66637	2.2532
3	3.953	VV	0.1273	5210.06055	637.75739	14.4480
4	4.424	VB	0.1944	2.96081e4	2384.19141	82.1064

Totals : 3.60607e4 3148.27672

\*\*\* End of Report \*\*\*

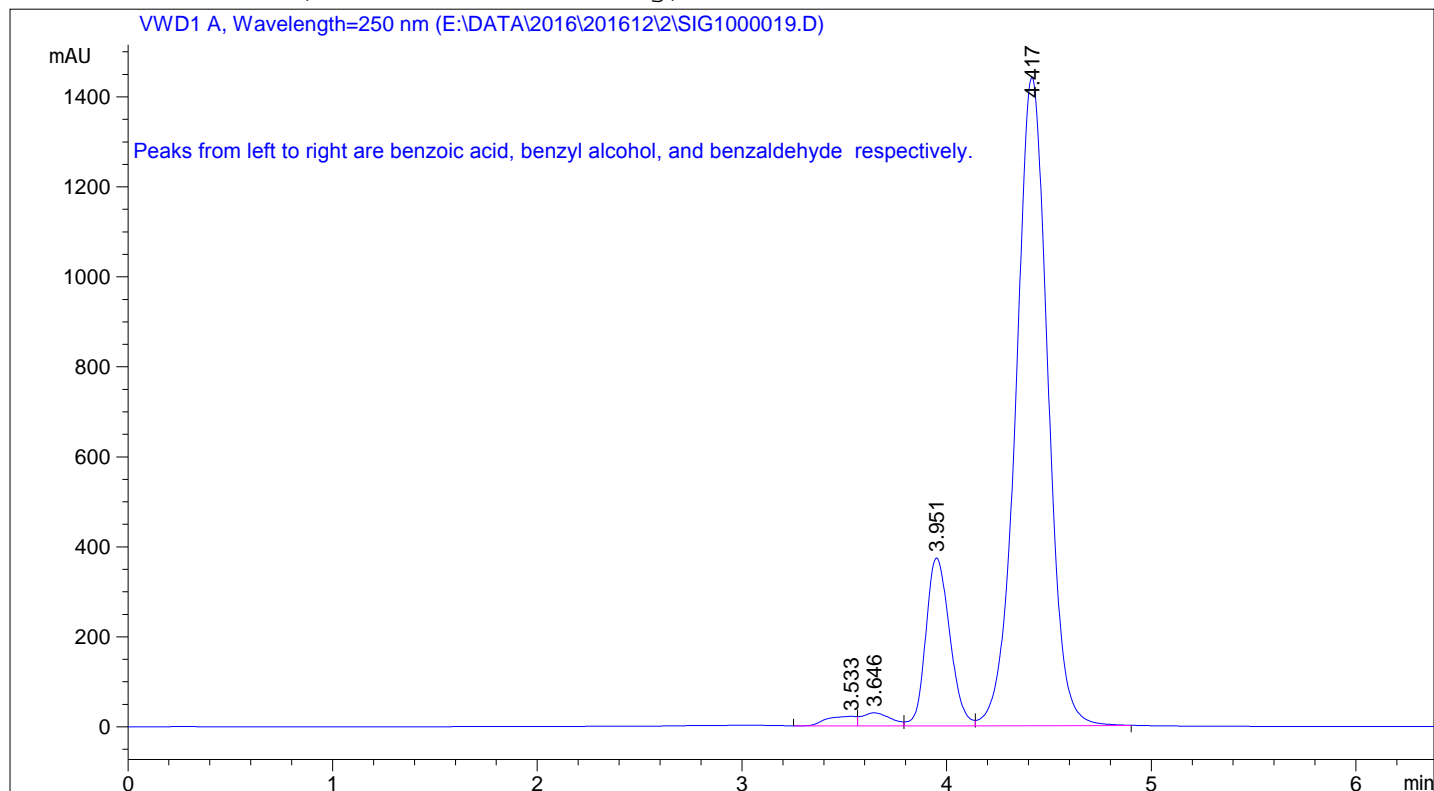


Sample Name: 7

```

=====
Acq. Operator   : ZLL
Acq. Instrument : Instrument 1           Location : Vial 1
Injection Date  : 2016-12-2 16:06:15
Acq. Method     : C:\CHEM32\1\METHODS\DEF_LC.M
Last changed    : 2016-12-2 13:42:36 by ZLL
                  (modified after loading)
Analysis Method : C:\CHEM32\1\METHODS\DEF_LC.M
Last changed    : 2016-12-2 15:43:26 by ZLL
                  (modified after loading)
=====

```



```

=====
                          Area Percent Report
=====

```

```

Sorted By           :      Signal
Multiplier           :      1.0000
Dilution             :      1.0000
Use Multiplier & Dilution Factor with ISTDs

```

Signal 1: VWD1 A, Wavelength=250 nm

Peak #	RetTime [min]	Type	Width [min]	Area mAU*s	Height [mAU]	Area %
1	3.533	BV	0.1363	212.80144	20.88745	1.1152
2	3.646	VV	0.1458	277.17236	28.79626	1.4525
3	3.951	VV	0.1280	3024.13916	373.44586	15.8476
4	4.417	VB	0.1653	1.55686e4	1441.57886	81.5848

```
Totals :                      1.90827e4  1864.70843
```

```

=====
*** End of Report ***
=====

```