

Supplementary Information

Electrochemical properties of PX-phase PbTiO_3 electrode for sodium ion batteries

Yixiang Zhang,^a Muwei Ji,^{a,b,c} Ziyi Liu,^a Yiqing He,^a Yao Hu,^a Qinghua Yang,^a Bo Li,^a and Jin Wang^{*a}

- Advanced Materials Institute, Graduate School at Shenzhen, Tsinghua University, Shenzhen 518055, P.R. China. Email: Wang.jin@sz.tsinghua.edu.cn
- Institute of Chemistry, Chinese Academy of Science, Beijing, 100190, P.R. China.
- College of Chemistry and Environmental Engineering, Shenzhen University, Shenzhen, 518061, P.R. China.

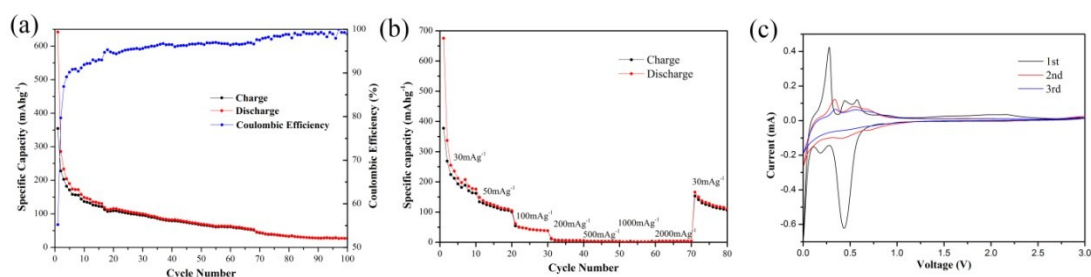
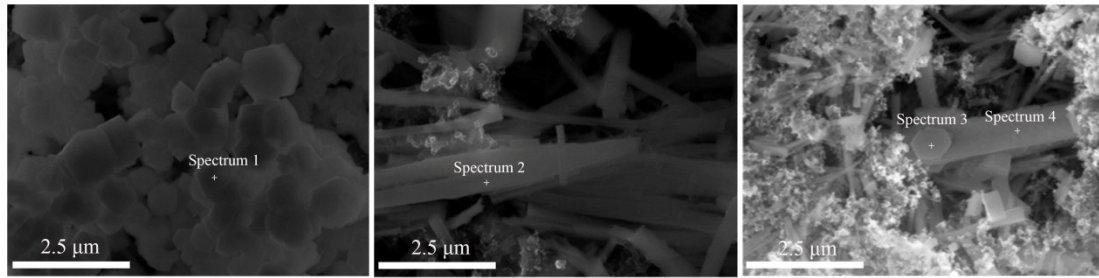


Figure S1. (a) Cycling capacities and coulombic efficiency of PT/PVDF electrode; (b) Rate capability of PT/PVDF electrode; (c) Cyclic voltammogram curves of PT/PVDF electrode.



Spectrum	Pb	Ti	O	Na	F	Total
Spectrum 1	15.36	0.7	71.03	12.91		100
Spectrum 2	8.79	9.52	60.44	14.11	7.14	100
Spectrum 3	22.94	13.36	45.88	11.14	6.68	100
Spectrum 4	14.42	16.37	54.58	7.61	7.02	100

Figure S2. EDS analysis at different section of PT/PVDF electrodes first charged to 3V and the relative atomic ratio of the detected elements.