

Investigations on the oil detachment on rough surface in aqueous solution

W. K. Xie, Y. Z. Sun, H. T. Liu, and F.H. Zhang*

*Center for Precision Engineering, Harbin Institute of Technology, P.O. Box 413,
Harbin, Heilongjiang 150001, China*

***Corresponding author**

Haitao Liu

Center for Precision Engineering,

Harbin Institute of Technology, P.O. Box 413,

Harbin, Heilongjiang 150001,

China

E-mail: 12B908026@hit.edu.cn

Tel. +86-451-86413840

Fax: +86-451-86415244

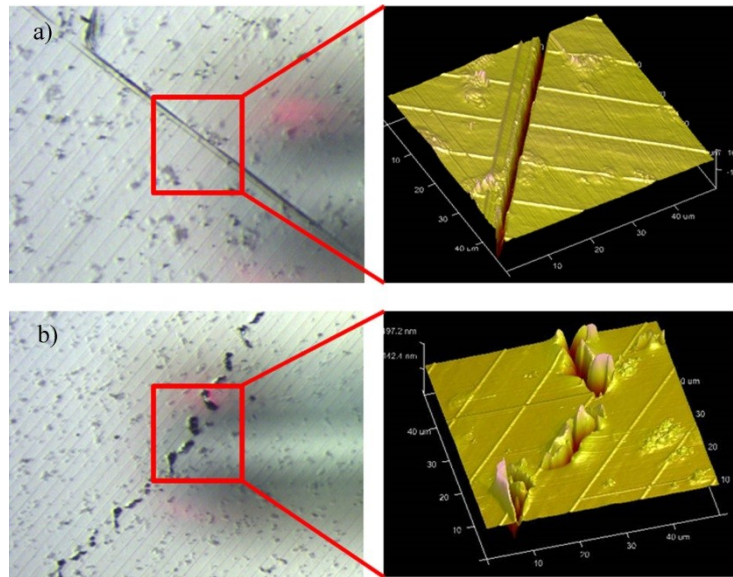


Fig.S1 Typical defects on the machined alumina surface: a) scratch, b) pit and protrusion.