

Supporting information

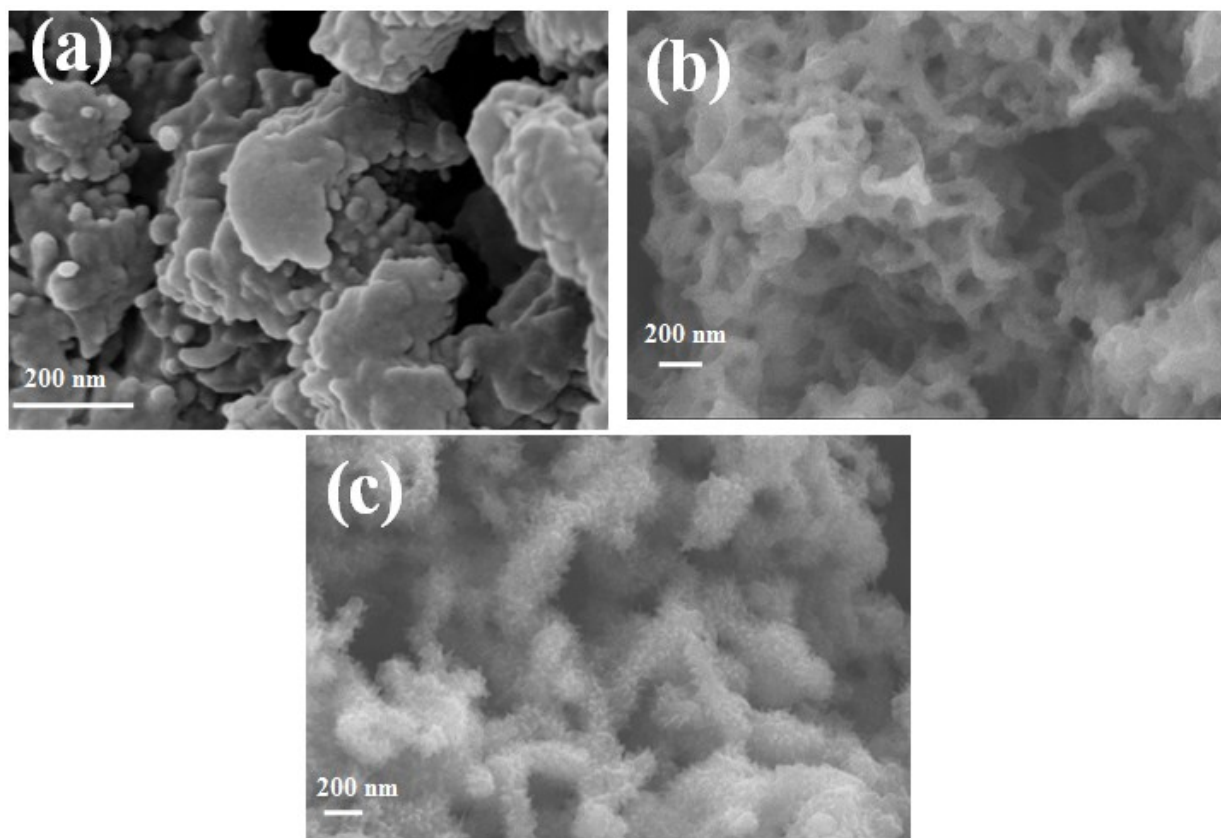


Figure 1 The SEM images of PANI (a) and c-PANI composites with W_r of 1:4 (b) and 1:8 (c)

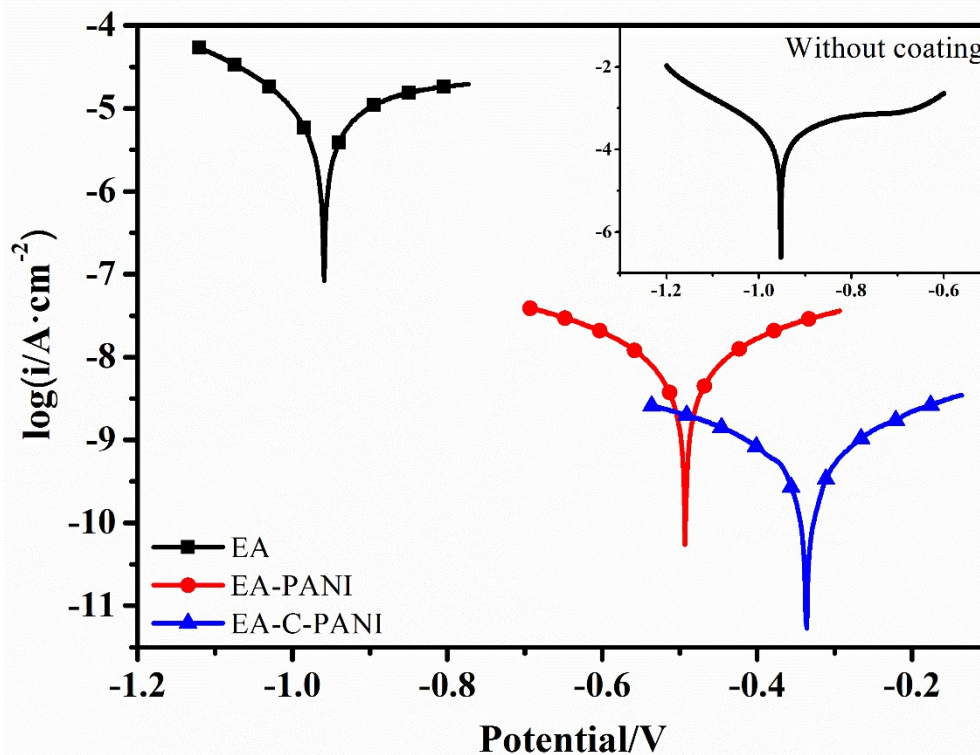


Figure 2 Tafel plots for (a) bare EA-coated, (b) PANI-coated, (c) CP-coated electrodes measured in 3.5 wt.% NaCl aqueous solution

Table 1 Electrochemical corrosion measurements of EA-coated, PANI-coated and CP-coated in 3.5 wt.% NaCl aqueous solution

	E_{corr}/V	$I_{\text{corr}}/A \cdot \text{cm}^{-2}$
EA	-0.959	1.20×10^{-5}
EA-PANI	-0.493	9.40×10^{-9}
EA-C-PANI	-0.336	5.87×10^{-10}