

Supporting Information

In-situ sulfurization constructing CdS-MoS<sub>2</sub> heterstructure on Mo  
substrate for efficient photoelectrochemical hydrogen generation

Xianglin Zhu<sup>a</sup>, Peng Wang<sup>a,\*</sup>, Qianqian Zhang<sup>a</sup>, Zeyan Wang<sup>a</sup>, Yuanyuan Liu<sup>a</sup>,  
Xiaoyan Qin<sup>a</sup>, Xiaoyang Zhang<sup>a</sup>, Ying Dai<sup>b</sup> and Baibiao Huang<sup>a,\*</sup>

<sup>a</sup>State Key Laboratory of Crystal Materials, Shandong University, Jinan 250100,  
China

<sup>b</sup>School of Physics, Shandong University, Jinan 250100, China

Corresponding authors' email address

pengwangicm@sdu.edu.cn (P.Wang)

bbhuang@sdu.edu.cn (B.Huang)

Tel/Fax numbers: Tel.: +86-0531-88366139; Fax: +86-0531-88365969

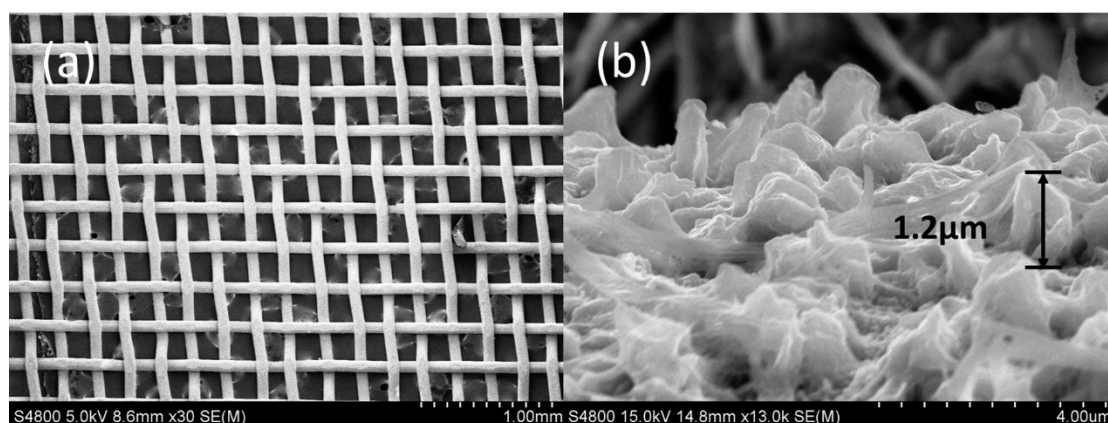


Fig. S1. SEM images of CdS-MoS<sub>2</sub>-3 photoelectrode.

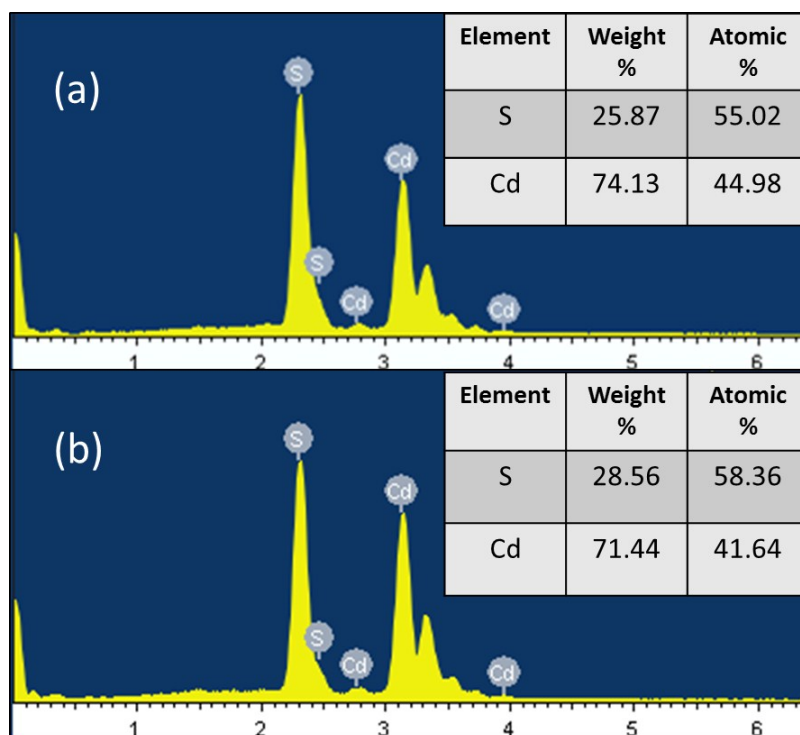


Fig. S2. EDS results of CdS-MoS<sub>2</sub>-3 photoelectrode before(a) and after(b) photocatalytic.

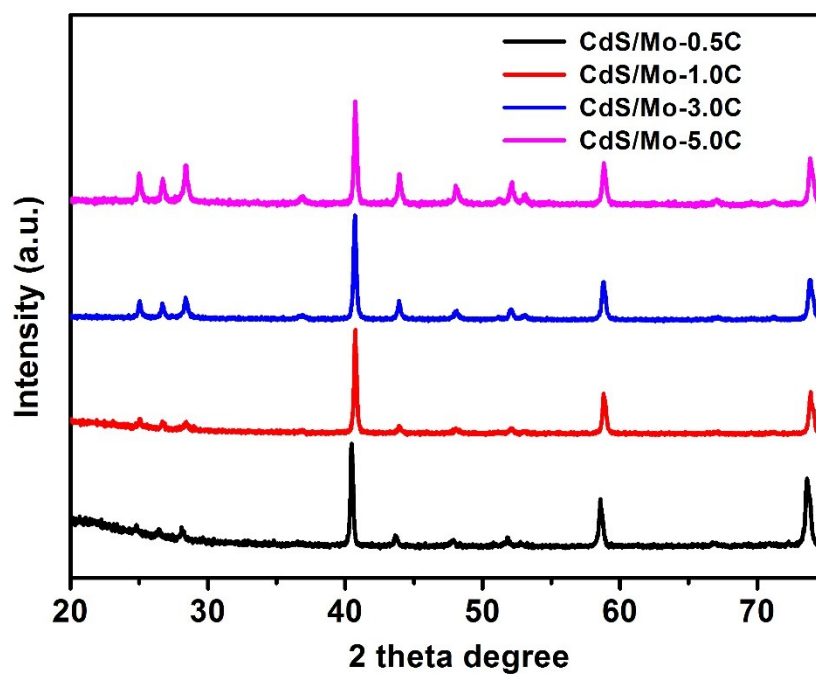


Fig. S3. XRD results of CdS/Mo photoelectrodes.

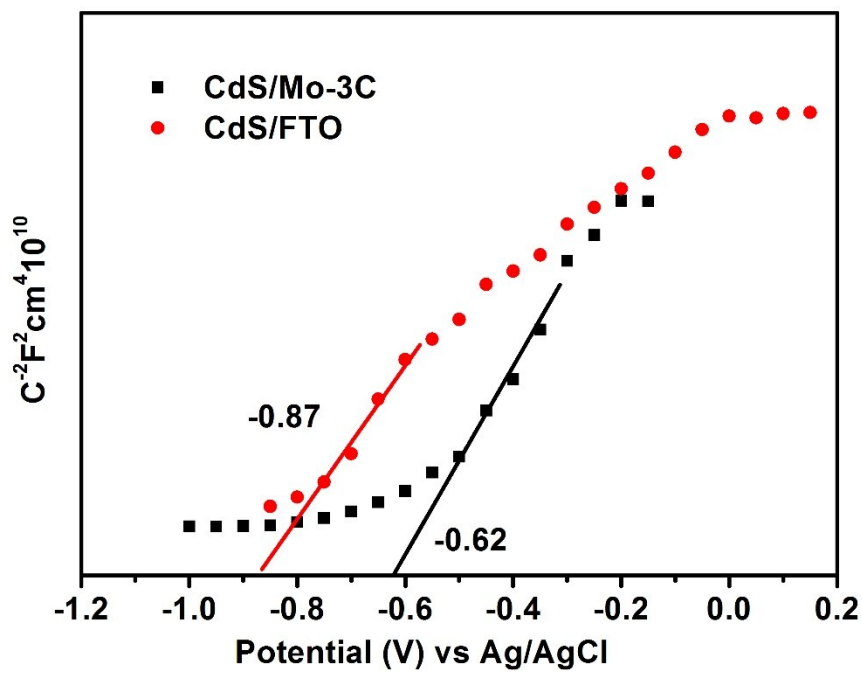


Fig. S4. Mott-Schottky plots of CdS/MoS<sub>2</sub> photoanode and CdS/FTO photoanode.

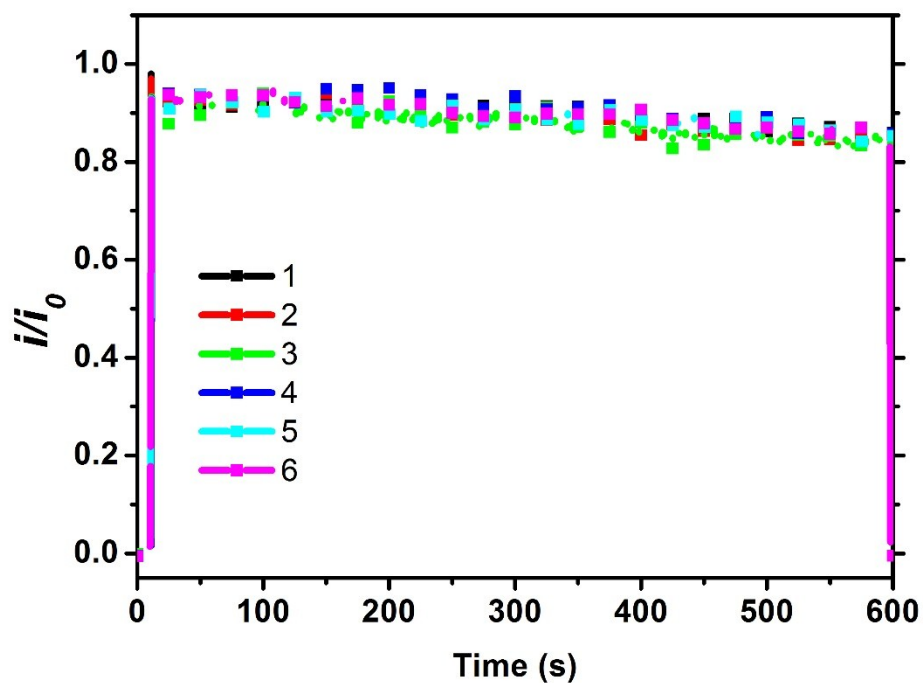


Fig. S5. Cycling test of PE HER.