

Supplementary Information:

Highly efficient synthesis of chiral quaternary 3-aminooxindoles promoted by Zinc (II) Chloride *via* Et₂Zn catalyzed addition of Grignard reagents to Isaltin-derived *N*-*tert*-butanesulfinyl ketimines

Shiwei Yang,^{ab} Guangling Bian,^{*a} Zhongxiang Chen,^a Xiaohan Xia,^a Mi Zhou,^a Caiyan Cui,^a and Ling Song^{*ab}

^aThe Key Laboratory of Coal to Ethylene Glycol and Its Related Technology, Fujian Institute of Research on the Structure of Matter, Chinese Academy of Sciences, Fuzhou, Fujian 350002, P. R. China.

^bUniversity of Chinese Academy of Sciences, 100049, Beijing, P. R. China.

E-mail: glb@fjirsm.ac.cn ; songling@fjirsm.ac.cn.

Table of Contents

General Methods	3
General reaction procedure for 4	3
Characterization of NMR and HRMS or HPLC of the Obtained compounds	3
1. ¹H NMR Spectrum of 4a	6
2. ¹³C NMR Spectrum of 4a	6
3. ¹H NMR Spectrum of 4a'	7
4. ¹³C NMR Spectrum of 4a'	7
5. HPLC (4a mixed with 4a')	8
6. HPLC (4a without purification)	8
7. ¹H NMR Spectrum of 4b	9

8. ^{13}C NMR Spectrum of 4b.	9
9. ^1H NMR Spectrum of 4c.	10
10. ^{13}C NMR Spectrum of 4c.	10
11. ^1H NMR Spectrum of 4d.	11
12. ^{13}C NMR Spectrum of 4d.	11
13. ^1H NMR Spectrum of 4e.	12
14. ^{13}C NMR Spectrum of 4e.	12
15. ^1H NMR Spectrum of 4f.	13
16. ^{13}C NMR Spectrum of 4f.	13
17. ^1H NMR Spectrum of 4g.	14
18. ^{13}C NMR Spectrum of 4g.	14
19. ^1H NMR Spectrum of 4h.	15
20. ^{13}C NMR Spectrum of 4h.	15
21. ^1H NMR Spectrum of 4h'.	16
22. ^{13}C NMR Spectrum of 4h'.	16
23. ^1H NMR Spectrum of 4i.	17
24. ^{13}C NMR Spectrum of 4i.	17
25. ^1H NMR Spectrum of 4j.	18

26. ^{13}C NMR Spectrum of 4j.	18
27. ^1H NMR Spectrum of 4k.	19
28. ^{13}C NMR Spectrum of 4k.	19
29. ^1H NMR Spectrum of 4l.	20
30. ^{13}C NMR Spectrum of 4l.	20
31. ^1H NMR Spectrum of 4m.	21
32. ^{13}C NMR Spectrum of 4m.	21
33. ^1H NMR Spectrum of 4n.	22
34. ^{13}C NMR Spectrum of 4n.	22
35. ^1H NMR Spectrum of 5.	23
36. ^{13}C NMR Spectrum of 5.	23
37. Determination of the Absolute Configuration of 4m by single-crystal X-ray analysis.	24

General Methods.

All experiments were carried out in dried glassware with magnetic stirring under an atmosphere of dry nitrogen. ^1H NMR (400 MHz), ^{13}C NMR (100 MHz) spectra were recorded in CDCl_3 solutions using a 400 MHz spectrometer. Chemical shifts were reported in parts per million (ppm, δ) relative to CDCl_3 (δ 7.26 for ^1H NMR), or CDCl_3 (δ 77.0 for ^{13}C NMR). Multiplicities are indicated as s (singlet), d (doublet), t (triplet), q (quartet), m (multiplet) and br (broad). Commercial reagents were used as received unless

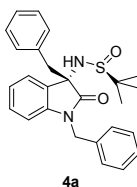
otherwise indicated. All solvents were purified and dried prior to use according to standard methods. Optical rotations were measured on a polarimeter and reported as follows: (c g/100 mL, solvent).

General reaction procedure for 4.

A suspension of ketimine **3** (0.2937 mmol) and ZnCl₂ (0.1762 mmol) in 2 ml of dried THF under nitrogen atmosphere was stirred for 30 mins at -20 °C. The corresponding Grignard reagent (0.8811 mmol) was then slowly added. After Et₂Zn (0.08811 mmol) was added completely, dropwise, the reaction mixture was stirred for 18-24 h at -20 °C. The reaction was quenched with 10 drops of a saturated NaCl solution, and the mixture was diluted with EA, dried by anhydrous Na₂SO₄ and concentrated *in vacuo*. The crude addition product **4** was purified by flash chromatography (petroleum ether/ethyl acetate 5:1 to 1:1) to obtain the title product.

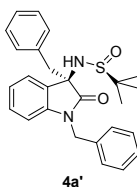
Characterization NMR and HRMS or HPLC of the Obtained Compounds.

(S)-N-((S)-1,3-dibenzyl-2-oxoindolin-3-yl)-2-methylpropane-2-sulfonamide **4a**



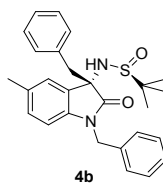
a white solid with the yield (92%). mp: 86-91 °C. [α]_D²⁹ 55.8 (c1, CHCl₃). ¹H NMR (400 MHz, CDCl₃) δ 1.23 (s, 9H), 3.50 (dd, *J* = 22.0, 12.7 Hz, 2H), 4.52 (s, 1H), 4.72 (dd, *J* = 134.4, 16.1 Hz, 2H), 6.43 (d, *J* = 8.3 Hz, 1H), 6.69 (d, *J* = 7.1 Hz, 2H), 6.90 (d, *J* = 7.3 Hz, 2H), 7.04-7.35 (m, 8H), 7.66 (d, *J* = 4.6 Hz, 1H); ¹³C NMR (100 MHz, CDCl₃) δ 22.45, 43.70, 45.22, 56.64, 65.91, 109.62, 122.71, 126.03, 126.59, 127.09, 127.32, 127.88, 128.13, 128.64, 129.68, 130.44, 133.67, 134.83, 142.66, 175.59. HRMS (ESI) calcd For [C₂₆H₂₉N₂O₂S, M+H]⁺: 433.1944, found: 433.1942.

(S)-N-((R)-1,3-dibenzyl-2-oxoindolin-3-yl)-2-methylpropane-2-sulfonamide **4a'**



a pale yellow solid. [α]_D²⁹ -45 (c1, CHCl₃). ¹H NMR (400 MHz, CDCl₃) δ 1.27 (s, 9H), 3.33 (dd, *J* = 41.9, 12.9 Hz, 2H), 4.62 (s, 1H), 4.78 (dd, *J* = 184.6, 16.1 Hz, 2H), 6.44 (d, *J* = 7.7 Hz, 1H), 6.73 (d, *J* = 7.7 Hz, 2H), 6.91 (d, *J* = 7.3 Hz, 2H), 7.05-7.25 (m, 7H), 7.29 (d, *J* = 8.8 Hz, 2H); ¹³C NMR (101 MHz, CDCl₃) δ 22.76, 44.02, 44.77, 56.00, 65.08, 110.05, 122.40, 125.91, 126.64, 127.13, 127.16, 127.98, 128.60, 129.97, 130.66, 133.41, 135.10, 143.58, 177.15.

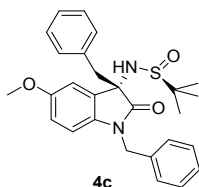
(S)-N-((S)-1,3-dibenzyl-5-methyl-2-oxoindolin-3-yl)-2-methylpropane-2-sulfonamide **4b**



a pale yellow solid with the yield (92%). mp: 48-49 °C. [α]_D²⁹ 51.2 (c1, CHCl₃). ¹H NMR (400 MHz, CDCl₃) δ 1.23 (s, 9H), 2.39 (s, 3H), 3.47 (dd, *J* = 33.7, 12.7 Hz, 2H), 4.11 (s, 1H), 4.71 (dd, *J* = 136.0, 16.0 Hz, 2H),

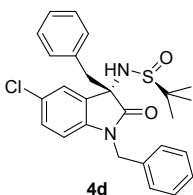
6.32 (d, $J = 8.0$ Hz, 1H), 6.69 (d, $J = 7.0$ Hz, 2H), 6.94 (m, 3H), 7.25-7.04 (m, 6H), 7.46 (s, 1H); ^{13}C NMR (101 MHz, CDCl_3) δ 21.25, 22.47, 43.69, 45.25, 56.62, 65.94, 109.34, 126.58, 126.66, 127.07, 127.25, 127.80, 128.11, 128.59, 130.01, 130.48, 132.25, 133.75, 134.96, 140.27, 175.53. HRMS (ESI) calcd For $[\text{C}_{27}\text{H}_{31}\text{N}_2\text{O}_2\text{S}, \text{M}+\text{H}]^+$: 447.2101, found: 447.2098.

(*S*)-*N*-((*S*)-1,3-dibenzyl-5-methoxy-2-oxoindolin-3-yl)-2-methylpropane-2-sulfinamide **4c**



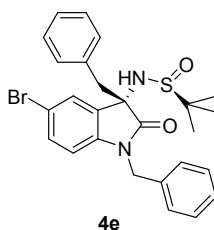
a white solid with the yield (94%). mp: 69-70 °C. $[\alpha]_{\text{D}}^{29}$ 49.9 (c1, CHCl_3). ^1H NMR (400 MHz, CDCl_3) δ 1.28 (s, 9H), 3.55 (s, 2H), 3.84 (s, 3H), 4.70 (dd, $J = 146.3, 16.0$ Hz, 2H), 4.76 (s, 1H), 6.32 (d, $J = 8.6$ Hz, 1H), 6.72-6.62 (m, 3H), 6.93 (d, $J = 7.3$ Hz, 2H), 7.23-7.06 (m, 6H), 7.39 (d, $J = 2.4$ Hz, 1H); ^{13}C NMR (101 MHz, CDCl_3) δ 22.63, 43.86, 44.74, 56.06, 66.75, 110.25, 112.77, 114.84, 126.61, 127.10, 127.31, 128.12, 128.61, 128.85, 130.45, 133.46, 134.82, 135.96, 156.03, 175.24. HRMS (ESI) calcd For $[\text{C}_{27}\text{H}_{30}\text{N}_2\text{O}_2\text{S}, \text{M}+\text{H}]^+$: 485.1869, found: 485.1871.

(*S*)-*N*-((*S*)-1,3-dibenzyl-5-chloro-2-oxoindolin-3-yl)-2-methylpropane-2-sulfinamide **4d**



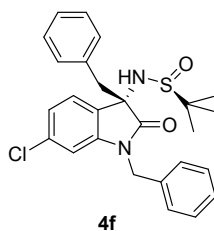
a white solid with the yield (75%). mp: 45-48 °C. $[\alpha]_{\text{D}}^{29}$ 25.4 (c1, CHCl_3). ^1H NMR (400 MHz, CDCl_3) δ 1.24 (s, 9H), 3.48 (dd, $J = 21.3, 13.0$ Hz, 2H), 4.11 (s, 1H), 4.71 (dd, $J = 129.0, 16.1$ Hz, 2H), 6.35 (d, $J = 8.4$ Hz, 1H), 6.68 (d, $J = 6.9$ Hz, 2H), 6.93 (d, $J = 7.2$ Hz, 2H), 7.25-7.09 (m, 7H), 7.61 (s, 1H); ^{13}C NMR (101 MHz, CDCl_3) δ 22.41, 43.83, 45.08, 56.89, 66.01, 110.62, 126.19, 126.56, 127.30, 127.51, 128.22, 128.30, 128.72, 129.65, 129.85, 130.40, 133.20, 134.34, 141.13, 175.12. HRMS (ESI) calcd For $[\text{C}_{26}\text{H}_{27}\text{ClN}_2\text{O}_2\text{SNa}, \text{M}+\text{Na}]^+$: 489.1374, found: 489.1382.

(*S*)-*N*-((*S*)-1,3-dibenzyl-5-bromo-2-oxoindolin-3-yl)-2-methylpropane-2-sulfinamide **4e**



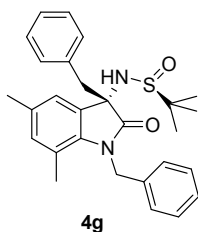
a white solid with the yield (80%). mp: 79-80 °C. $[\alpha]_{\text{D}}^{29}$ 30.9 (c1, CHCl_3). ^1H NMR (400 MHz, CDCl_3) δ 1.24 (s, 9H), 3.48 (dd, $J = 22.9, 12.8$ Hz, 2H), 4.06 (s, 1H), 4.72 (dd, $J = 134.7, 16.1$ Hz, 2H), 6.30 (d, $J = 8.3$ Hz, 1H), 6.67 (d, $J = 7.1$ Hz, 2H), 6.93 (d, $J = 7.3$ Hz, 2H), 7.12-7.22 (m, 7H), 7.75 (s, 1H); ^{13}C NMR (101 MHz, CDCl_3) δ 22.43, 43.81, 45.13, 56.87, 65.91, 111.13, 115.44, 126.55, 127.32, 127.51, 128.32, 128.74, 128.93, 130.20, 130.41, 132.57, 133.20, 134.30, 141.62, 175.00. HRMS (ESI) calcd For $[\text{C}_{26}\text{H}_{27}\text{BrN}_2\text{O}_2\text{SNa}, \text{M}+\text{Na}]^+$: 533.0869, found: 533.0864.

(*S*)-*N*-((*S*)-1,3-dibenzyl-6-chloro-2-oxoindolin-3-yl)-2-methylpropane-2-sulfinamide **4f**



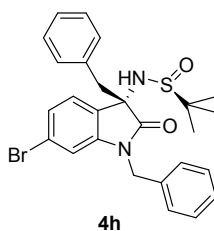
a white solid with the yield (85%). mp: 58-60 °C. $[\alpha]_D^{29}$ 13.9 (c1, CHCl₃). ¹H NMR (400 MHz, CDCl₃) δ 1.24 (s, 9H), 3.47 (dd, *J* = 36.1, 12.7 Hz, 2H), 4.19 (s, 1H), 4.71 (dd, *J* = 124.8, 16.1 Hz, 2H), 6.45 (d, *J* = 1.8 Hz, 1H), 6.72 (d, *J* = 6.9 Hz, 2H), 6.92 (d, *J* = 7.3 Hz, 2H), 7.27-7.09 (m, 7H), 7.55 (d, *J* = 8.0 Hz, 1H); ¹³C NMR (101 MHz, CDCl₃) δ 22.42, 43.80, 45.03, 56.77, 65.61, 110.22, 122.75, 126.31, 126.53, 127.02, 127.33, 127.58, 128.33, 128.80, 130.39, 133.24, 134.24, 135.47, 143.86, 175.61. HRMS (ESI) calcd For [C₂₆H₂₇ClN₂O₂SNa, M+Na]⁺: 489.1374, found: 489.1370.

(S)-N-((S)-1,3-dibenzyl-5,7-dimethyl-2-oxoindolin-3-yl)-2-methylpropane-2-sulfonamide **4g**



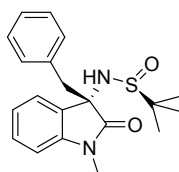
a pale yellow solid with the yield (95%). mp: 67-69 °C. $[\alpha]_D^{29}$ 57.8 (c1, CHCl₃). ¹H NMR (400 MHz, CDCl₃) δ 1.23 (s, 9H), 2.00 (s, 3H), 2.37 (s, 3H), 3.46 (dd, *J* = 31.7, 12.7 Hz, 2H), 4.08 (s, 1H), 4.96 (dd, *J* = 76.0, 17.0 Hz, 2H), 6.59 (d, *J* = 6.2 Hz, 2H), 6.78 (s, 1H), 6.93 (d, *J* = 7.2 Hz, 2H), 7.12-7.24 (m, 6H), 7.34 (s, 1H); ¹³C NMR (101 MHz, CDCl₃) δ 18.37, 20.92, 22.48, 44.91, 45.33, 56.60, 65.20, 119.74, 124.62, 125.24, 126.83, 127.09, 128.13, 128.70, 130.59, 132.24, 133.85, 134.23, 137.06, 138.46, 176.46. HRMS (ESI) calcd For [C₂₈H₃₂N₂O₂SNa, M+Na]⁺: 483.2077, found: 483.2079.

(S)-N-((S)-1,3-dibenzyl-6-bromo-2-oxoindolin-3-yl)-2-methylpropane-2-sulfonamide **4h**



a white solid with the yield (92%). mp: 62-64 °C. $[\alpha]_D^{29}$ 35.1 (c1, CHCl₃). ¹H NMR (400 MHz, CDCl₃) δ 1.22 (s, 9H), 3.46 (dd, *J* = 39.8, 12.8 Hz, 2H), 4.06 (s, 1H), 4.71 (dd, *J* = 119.9, 16.1 Hz, 2H), 6.61 (s, 1H), 6.73 (d, *J* = 7.0 Hz, 2H), 6.92 (d, *J* = 6.9 Hz, 2H), 7.12-7.27 (m, 7H), 7.48 (d, *J* = 8.0 Hz, 1H); ¹³C NMR (101 MHz, CDCl₃) δ 22.41, 43.80, 45.00, 56.78, 65.63, 112.93, 123.42, 125.68, 126.53, 126.87, 127.35, 127.59, 128.35, 128.81, 130.39, 133.22, 134.23, 143.97, 175.50. HRMS (ESI) calcd For [C₂₆H₂₇BrN₂O₂SNa, M+Na]⁺: 533.0869, found: 533.0867.

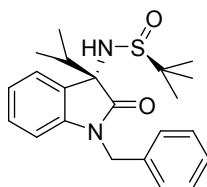
(S)-N-((S)-3-benzyl-1-methyl-2-oxoindolin-3-yl)-2-methylpropane-2-sulfonamide **4h'**



4h'

a white solid with the yield (75%). mp: 108-109 °C. $[\alpha]_D^{29}$ 39.9 (c1, CHCl₃). ¹H NMR (400 MHz, CDCl₃) δ 1.21 (s, 9H), 2.96 (s, 3H), 3.38 (dd, *J* = 26.4, 12.6 Hz, 2H), 4.04 (s, 1H), 6.61 (d, *J* = 7.8 Hz, 1H), 6.86 (d, *J* = 6.8 Hz, 2H), 7.04-7.16 (m, 4H), 7.26 (d, *J* = 8.0 Hz, 1H), 7.55 (d, *J* = 7.4 Hz, 1H); ¹³C NMR (101 MHz, CDCl₃) δ 22.42, 26.01, 45.70, 56.66, 65.88, 108.19, 122.66, 125.75, 125.95, 127.05, 127.80, 128.09, 129.57, 130.09, 133.54, 143.16, 175.53. HRMS (ESI) calcd For [C₂₀H₂₄N₂O₂SNa, M+Na]⁺: 379.1451, found: 379.1457.

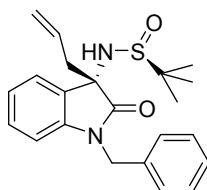
(*S*)-*N*-((*S*)-1-benzyl-3-isopropyl-2-oxoindolin-3-yl)-2-methylpropane-2-sulfinamide **4i**



4i

a white solid with the yield (84%). mp: 95-97 °C. $[\alpha]_D^{29}$ 4.4 (c1, CHCl₃). ¹H NMR (400 MHz, CDCl₃) δ 0.92 (d, *J* = 6.7 Hz, 3H), 1.06 (d, *J* = 6.8 Hz, 3H), 1.17 (s, 9H), 1.61 (s, 3H), 2.40 (m, 1H), 4.03 (s, 1H), 4.93 (dd, *J* = 23.9, 15.7 Hz, 2H), 6.78 (d, *J* = 7.9 Hz, 1H), 7.11 (m, 1H), 7.24-7.41 (m, 6H), 7.52 (d, *J* = 8.4 Hz, 1H); ¹³C NMR (101 MHz, CDCl₃) δ 16.42, 16.72, 22.43, 36.19, 43.77, 56.48, 57.87, 109.25, 122.72, 126.40, 127.19, 127.33, 127.41, 127.69, 128.74, 129.48, 135.59, 143.08, 175.48. HRMS (ESI) calcd For [C₂₂H₂₈N₂O₂SNa, M+Na]⁺: 407.1764, found: 407.1767.

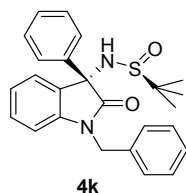
(*S*)-*N*-((*S*)-3-allyl-1-benzyl-2-oxoindolin-3-yl)-2-methylpropane-2-sulfinamide **4j**



4j

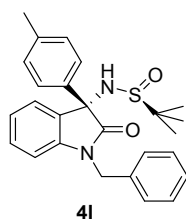
a pale yellow solid with the yield (92%). mp: 55-57 °C. $[\alpha]_D^{29}$ 16.3 (c1, CHCl₃). ¹H NMR (400 MHz, CDCl₃) δ 1.24 (s, 9H), 2.62-2.84 (m, 2H), 4.33 (s, 1H), 4.95 (dd, *J* = 89.2, 15.8 Hz, 2H), 5.10 (t, *J* = 16.7 Hz, 2H), 5.52-5.66 (m, 1H), 6.71 (d, *J* = 7.9 Hz, 1H), 7.07 (t, *J* = 7.5 Hz, 1H), 7.19-7.40 (m, 7H); ¹³C NMR (101 MHz, CDCl₃) δ 22.72, 43.19, 44.20, 56.14, 63.36, 109.95, 120.76, 122.65, 125.48, 126.59, 127.35, 127.57, 128.75, 129.81, 130.26, 135.55, 143.24, 177.42. HRMS (ESI) calcd For [C₂₂H₂₆N₂O₂SNa, M+Na]⁺: 405.1607, found: 405.1607.

(*S*)-*N*-((*S*)-1-benzyl-2-oxo-3-phenylindolin-3-yl)-2-methylpropane-2-sulfinamide **4k**



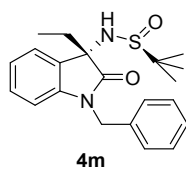
a pale yellow solid with the yield (85%). mp: 115-118 °C. $[\alpha]_D^{25}$ 30.5 (c1, CHCl₃). ¹H NMR (400 MHz, CDCl₃) δ 1.25 (s, 9H), 4.37 (s, 1H), 4.96 (dd, *J* = 40.5, 15.8 Hz, 2H), 6.81 (d, *J* = 8.0 Hz, 1H), 7.15 (t, *J* = 7.6 Hz, 1H), 7.25-7.40 (m, 9H), 7.50-7.55 (m, 3H); ¹³C NMR (101 MHz, CDCl₃) δ 22.52, 44.02, 56.97, 67.85, 109.78, 123.23, 126.70, 127.15, 127.72, 128.71, 128.77, 128.86, 129.43, 129.83, 135.38, 139.22, 142.52, 175.7. HRMS (ESI) calcd For [C₂₅H₂₆N₂O₂SNa, M+Na]⁺: 441.1607, found: 441.1611.

(*S*)-*N*-((*S*)-1-benzyl-2-oxo-3-(*p*-tolyl)indolin-3-yl)-2-methylpropane-2-sulfonamide **4l**



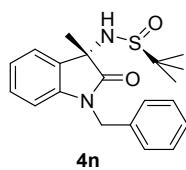
a pale yellow solid with the yield (88%). mp: 67-68 °C. $[\alpha]_D^{29}$ 9.6 (c1, CHCl₃). ¹H NMR (400 MHz, CDCl₃) δ 1.25 (s, 9H), 2.35 (s, 3H), 4.35 (s, 1H), 4.94 (dd, *J* = 40.9, 15.8 Hz, 2H), 6.80 (d, *J* = 7.8 Hz, 1H), 7.12-7.21 (m, 3H), 7.24-7.33 (m, 6H), 7.41 (d, *J* = 8.2 Hz, 2H), 7.49 (d, *J* = 6.9 Hz, 1H); ¹³C NMR (101 MHz, CDCl₃) δ 21.12, 22.52, 43.99, 56.97, 67.62, 109.78, 123.22, 126.90, 127.10, 127.13, 127.70, 128.79, 129.56, 129.79, 135.39, 136.17, 138.70, 142.46, 175.80. HRMS (ESI) calcd For [C₂₆H₂₈N₂O₂SNa, M+Na]⁺: 455.1764, found: 455.1768.

(*S*)-*N*-((*S*)-1-benzyl-3-ethyl-2-oxoindolin-3-yl)-2-methylpropane-2-sulfonamide **4m**



a white solid with the yield (95%). mp: 74-76 °C. $[\alpha]_D^{29}$ 12.3 (c1, CHCl₃). ¹H NMR (400 MHz, CDCl₃) δ 0.71 (t, *J* = 7.4 Hz, 3H), 1.17 (s, 9H), 2.20 (q, *J* = 7.5 Hz, 2H), 3.89 (s, 1H), 4.94 (s, 2H), 6.77 (d, *J* = 7.8 Hz, 1H), 7.12 (t, *J* = 7.5 Hz, 1H), 7.22-7.35 (m, 6H), 7.52 (d, *J* = 7.4 Hz, 1H); ¹³C NMR (101 MHz, CDCl₃) δ 8.15, 22.39, 32.22, 43.82, 56.41, 65.46, 109.44, 123.04, 125.55, 127.22, 127.73, 128.12, 128.79, 129.57, 135.50, 142.85, 176.42. HRMS (ESI) calcd For [C₂₁H₂₇N₂O₂S, M+H]⁺: 371.1788, found: 371.1793.

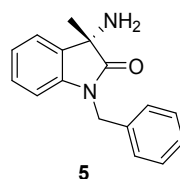
(*S*)-*N*-((*S*)-1-benzyl-3-methyl-2-oxoindolin-3-yl)-2-methylpropane-2-sulfonamide **4n**



a pale yellow solid with the yield (94%). mp: 76-77 °C. $[\alpha]_D^{29}$ 4.8 (c1, CHCl₃). ¹H NMR (400 MHz, CDCl₃) δ 1.25 (s, 9H), 1.66 (s, 3H), 4.27 (s, 1H), 4.96 (dd, *J* = 43.1, 16.3 Hz, 2H), 6.74 (d, *J* = 7.8 Hz, 1H), 7.08 (t, *J* =

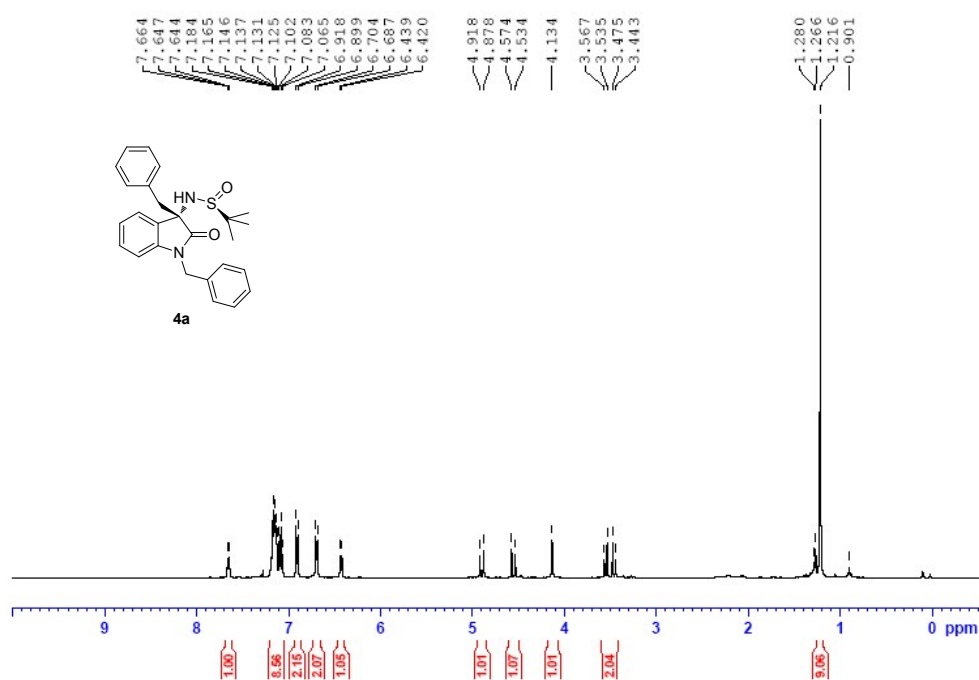
7.2 Hz, 1H), 7.20-7.40 (m, 7H); ^{13}C NMR (101 MHz, CDCl_3) δ 22.62, 25.55, 44.13, 56.01, 60.60, 110.02, 122.90, 124.75, 127.17, 127.39, 128.84, 129.67, 135.59, 142.55, 178.22.

(S)-3-amino-1-benzyl-3-methylindolin-2-one **5**

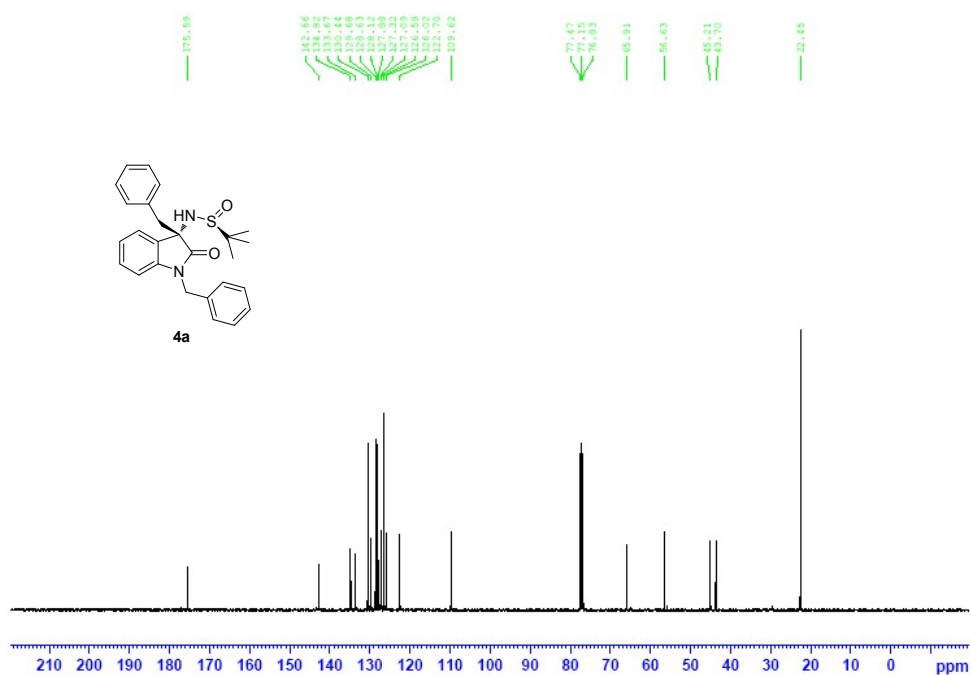


a pale yellow solid. $[\alpha]_D^{29}$ -30.6 (c1, CHCl_3). ^1H NMR (400 MHz, CDCl_3) δ 1.54 (s, 3H), 2.09 (s, 2H), 4.92 (dd, $J = 64.0$, 15.2 Hz, 2H), 6.76 (d, $J = 7.8$ Hz, 1H), 7.07 (t, $J = 7.5$ Hz, 1H), 7.20 (t, $J = 7.7$ Hz, 1H), 7.25-7.37 (m, 5H), 7.44 (d, $J = 7.3$ Hz, 1H); ^{13}C NMR (101 MHz, CDCl_3) δ 25.72, 43.71, 57.87, 109.34, 123.02, 123.44, 127.23, 127.70, 128.85, 133.20, 135.82, 141.76, 181.18.

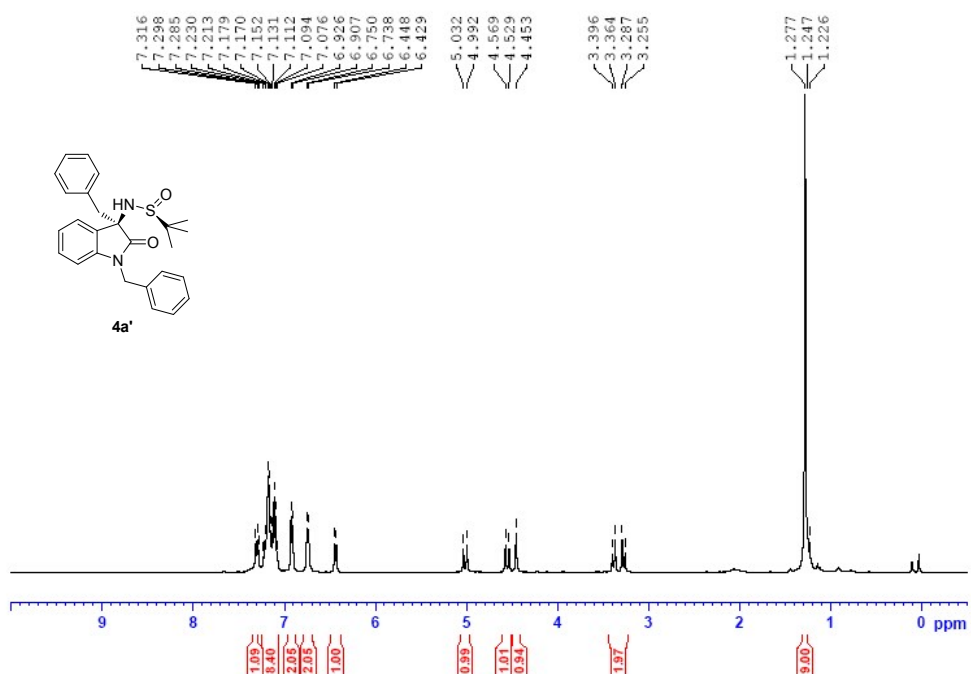
1. ^1H NMR Spectrum of 4a.



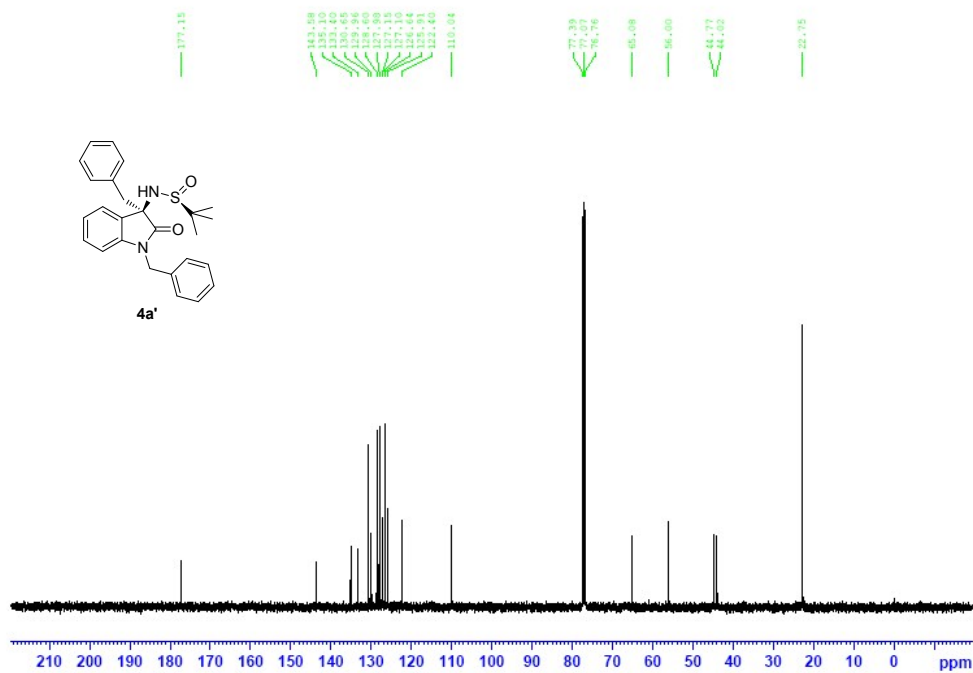
2. ^{13}C NMR Spectrum of 4a.



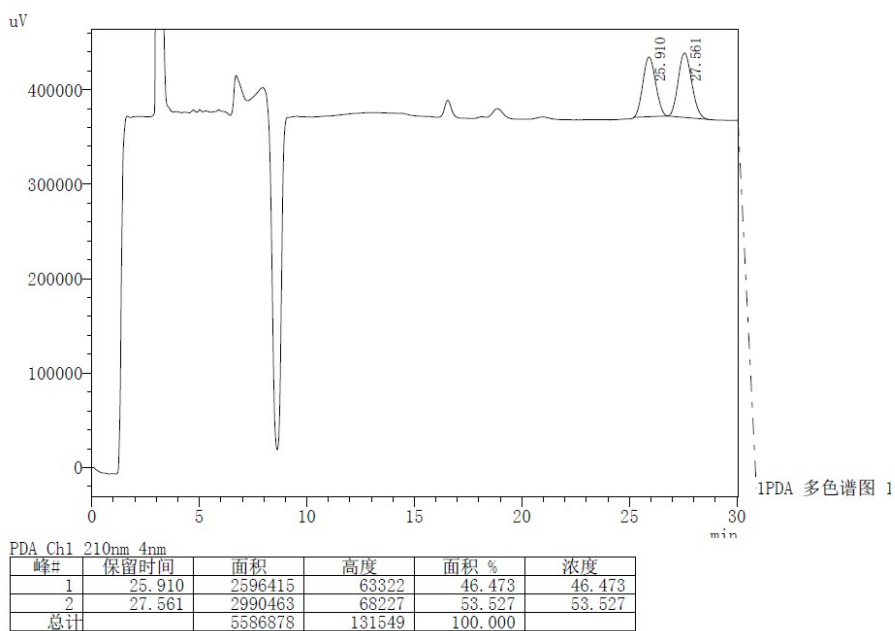
3. ¹H NMR Spectrum of 4a'.



4. ¹³C NMR Spectrum of 4a'.

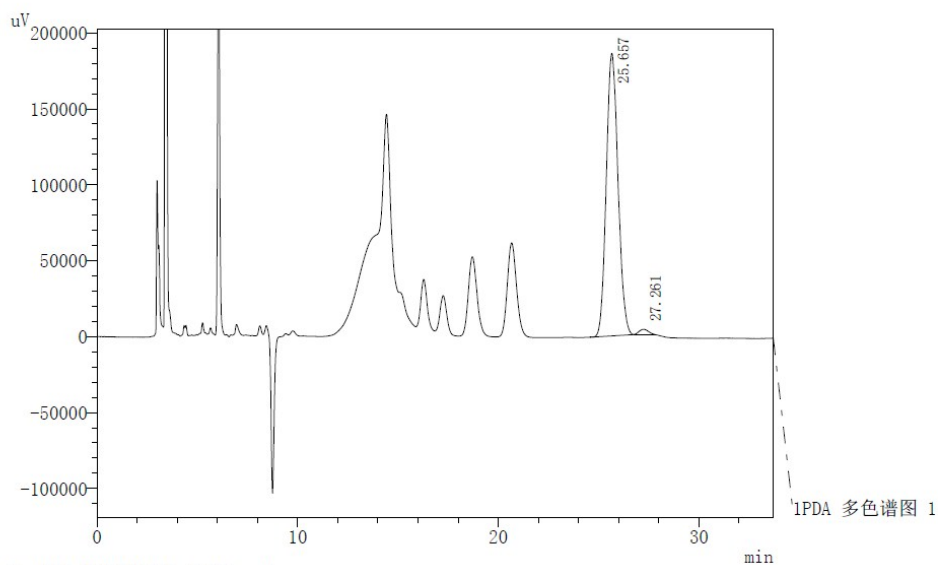


5. HPLC (4a mixed with 4a')



Chiracel AD-H Column (4.6*250 mm); detected at 210nm; n-hexane / i-propanol = 90 / 10; flow = 1.0 mL / min; Retention time: 25.9 min (4a), 27.5 min (4a').

6. HPLC (4a without purification)



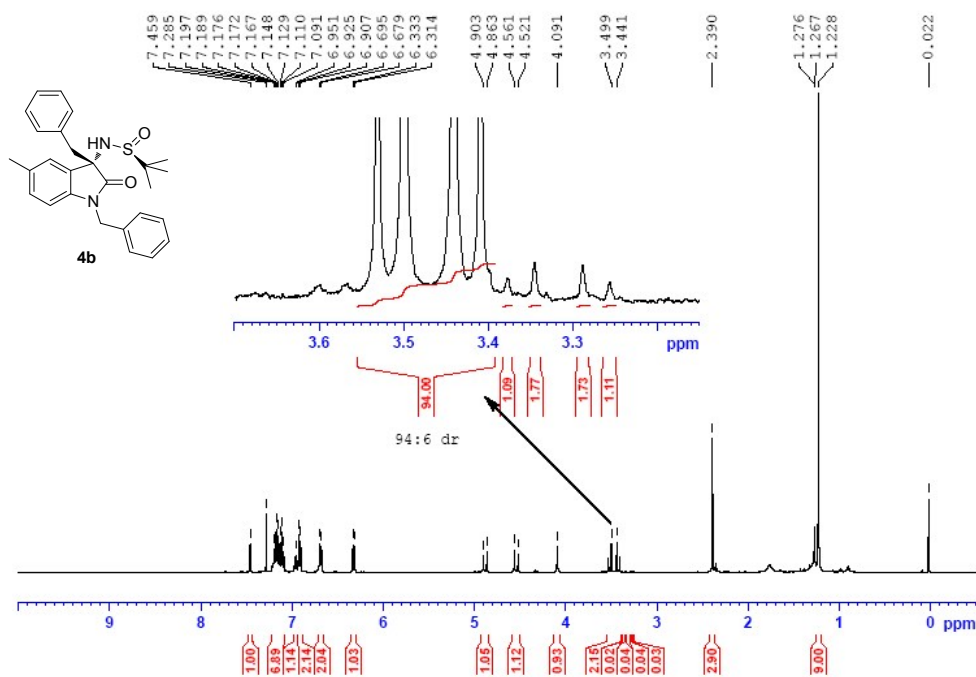
1 PDA 多色谱图 1 / 210nm 4nm

PDA Ch1 210nm 4nm

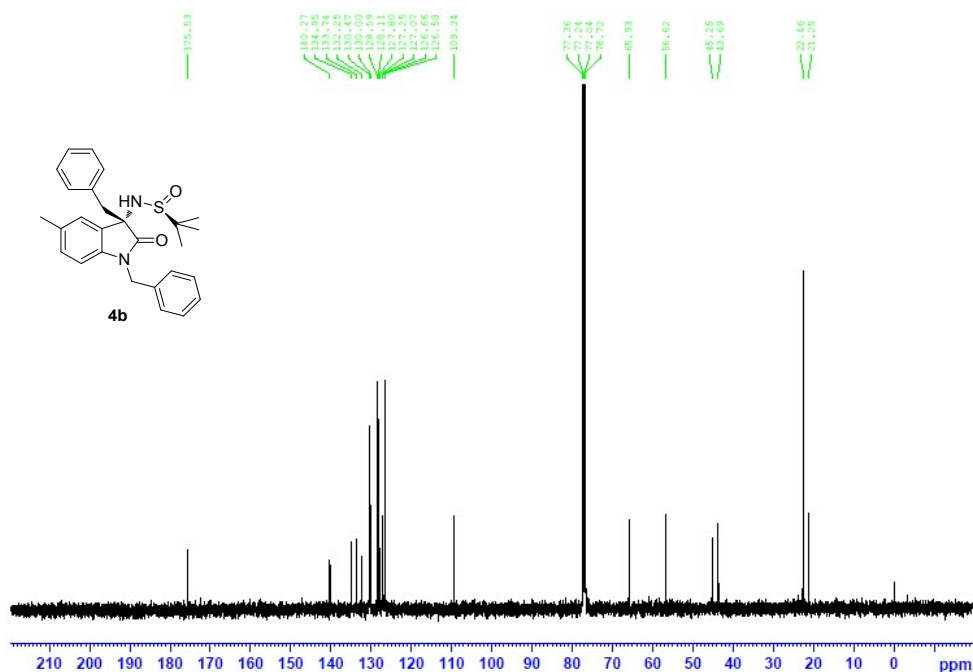
峰#	保留时间	面积	高度	面积 %	浓度
1	25.657	7583850	186139	98.529	98.529
2	27.261	113225	3479	1.471	1.471
总计		7697075	189618	100.000	

Chiracel AD-H Column (4.6*250 mm); detected at 210 nm; n-hexane / i-propanol = 90 / 10; flow = 1.0 mL/min; Retention time: 25.7 min (4a), 27.3 min (4a'). 98.5:1.5 dr.

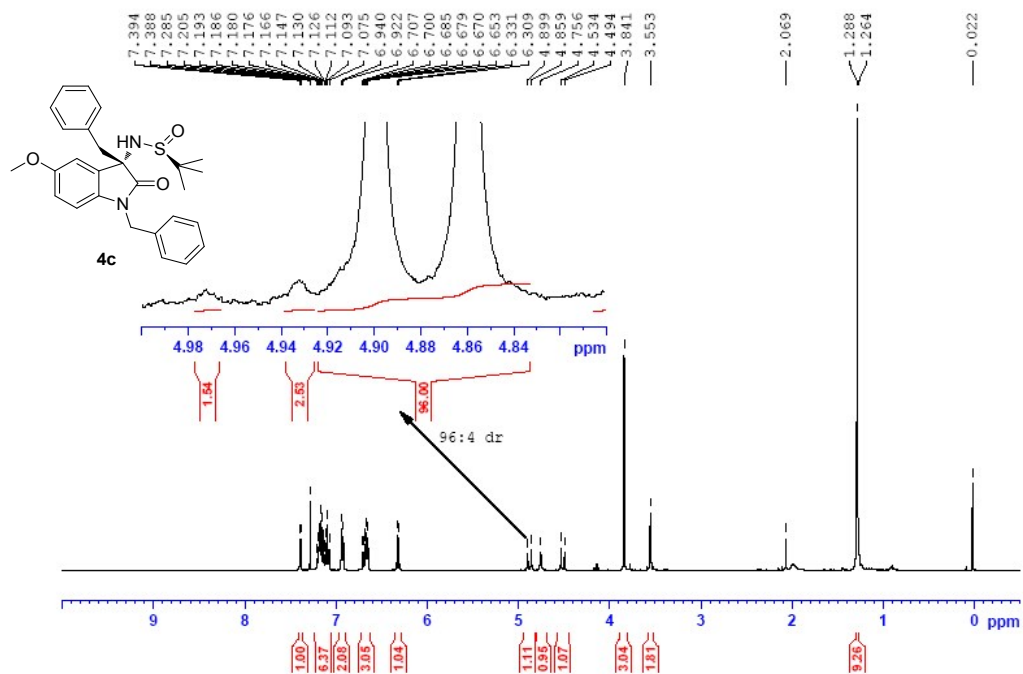
7. ¹H NMR Spectrum of 4b.



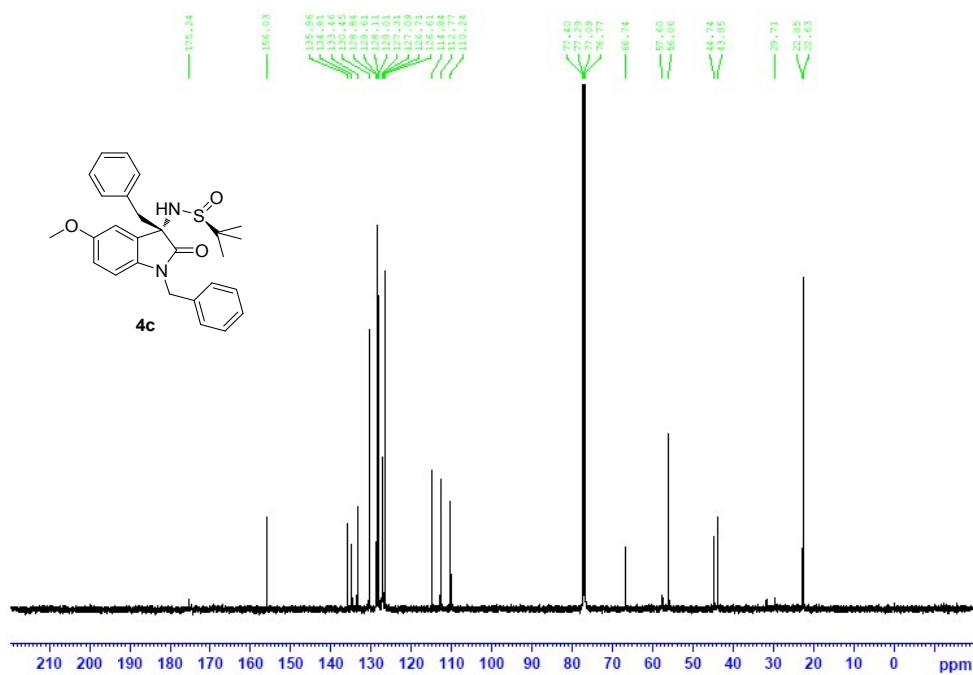
8. ¹³C NMR Spectrum of 4b.



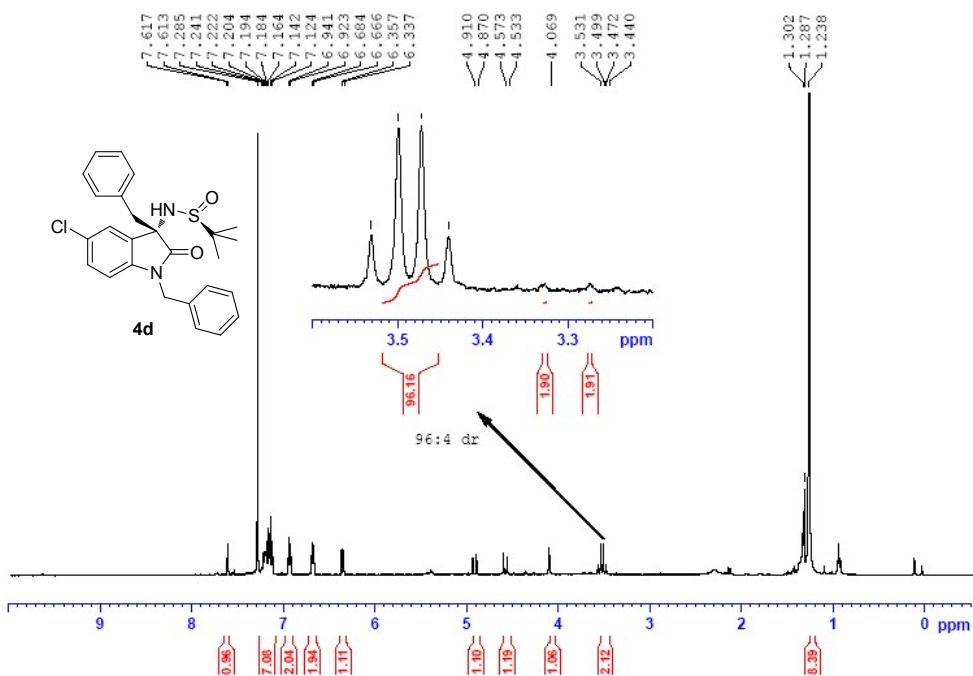
9. ¹H NMR Spectrum of 4c.



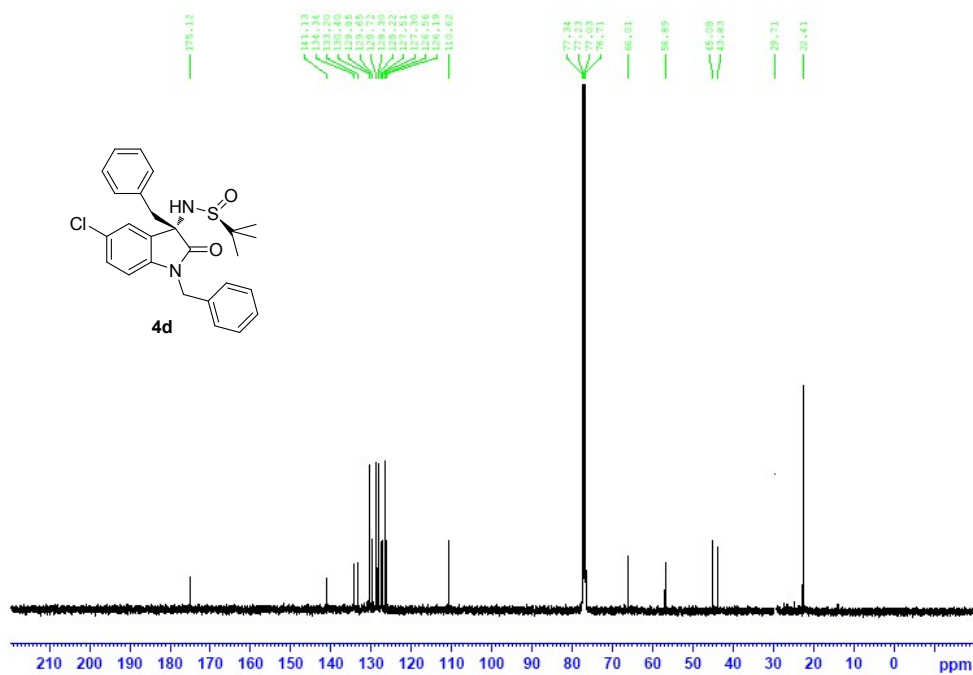
10. ¹³C NMR Spectrum of 4c.



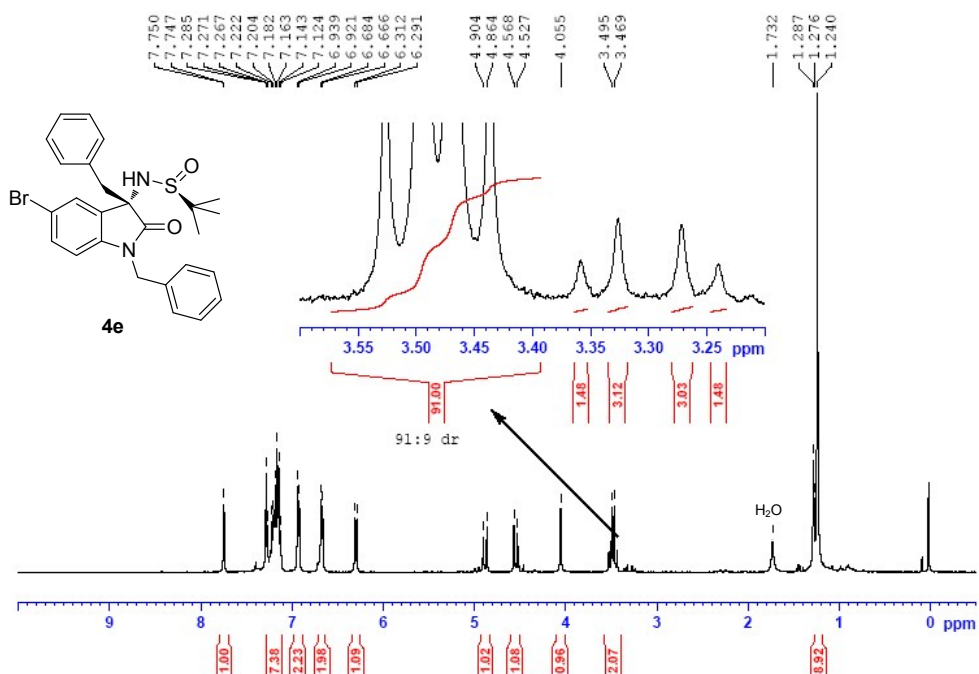
11. ¹H NMR Spectrum of 4d.



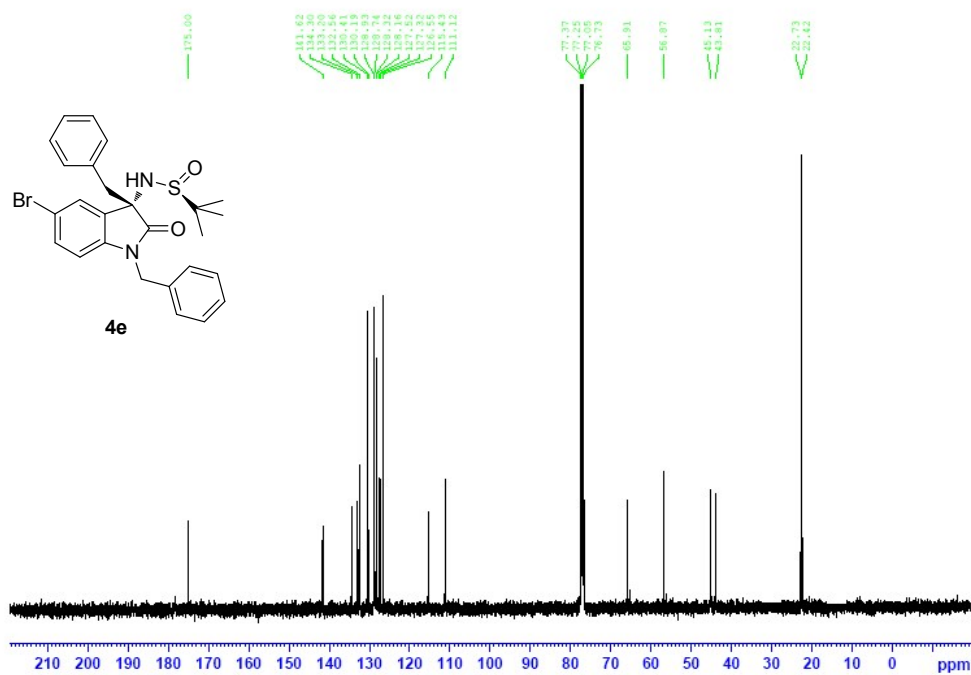
12. ¹³C NMR Spectrum of 4d.



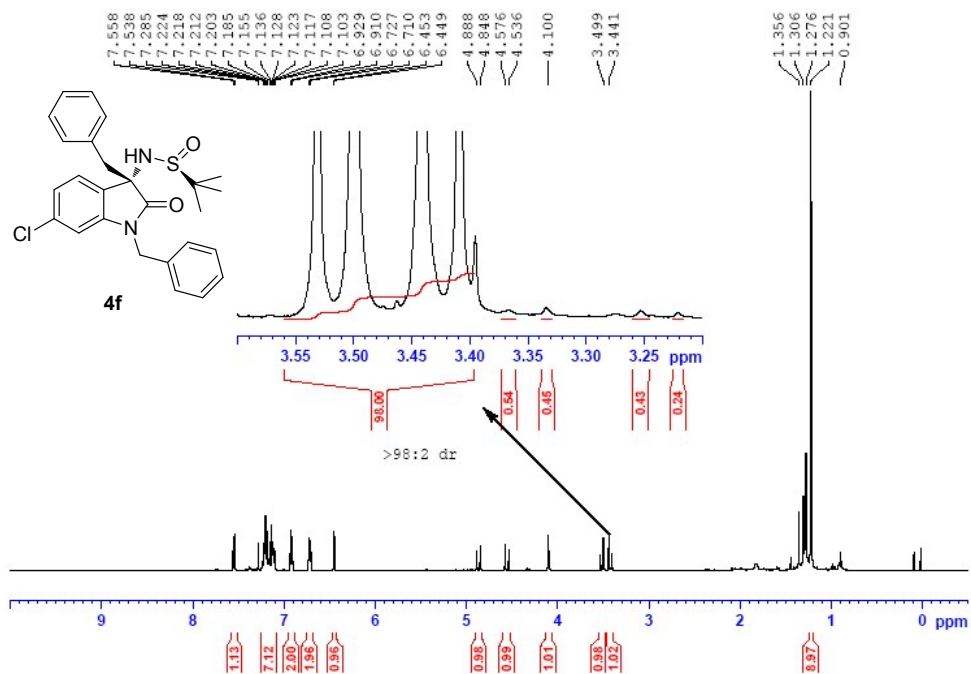
13. ¹H NMR Spectrum of 4e.



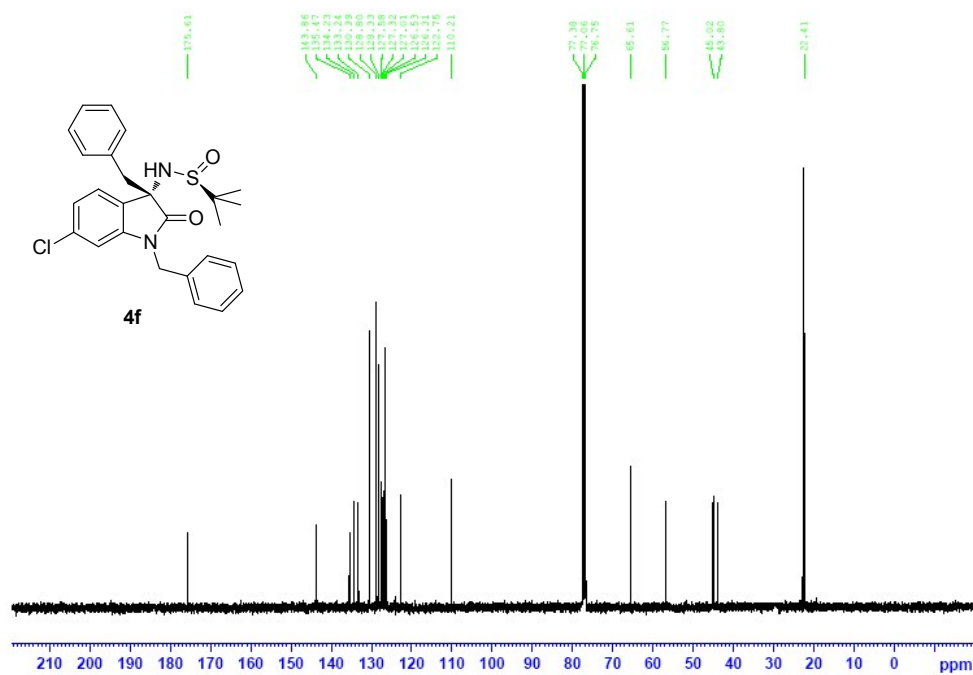
14. ¹³C NMR Spectrum of 4e.



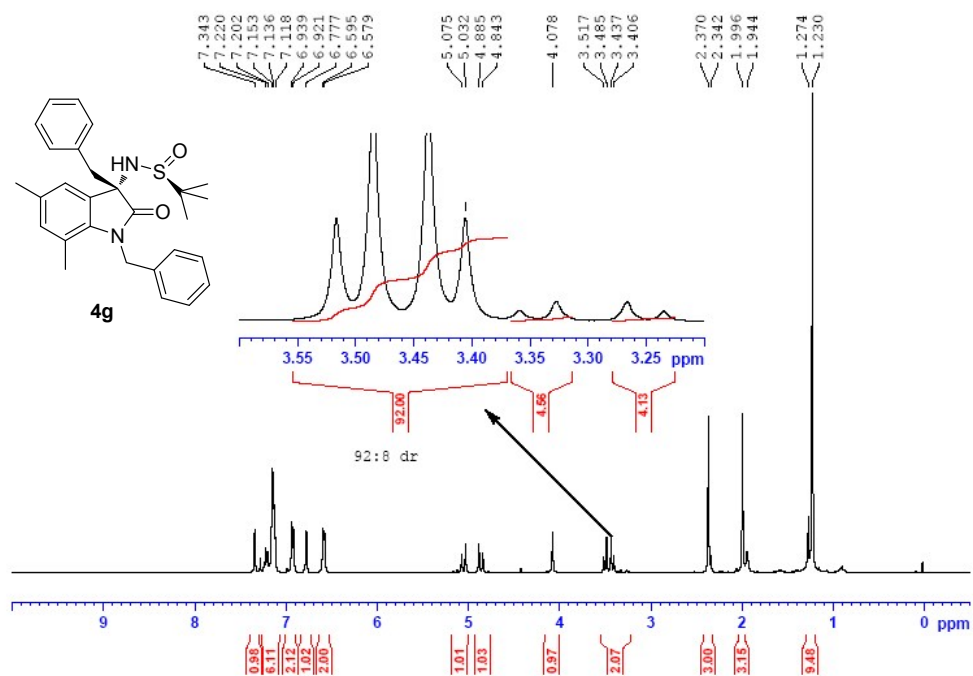
15. ¹H NMR Spectrum of 4f.



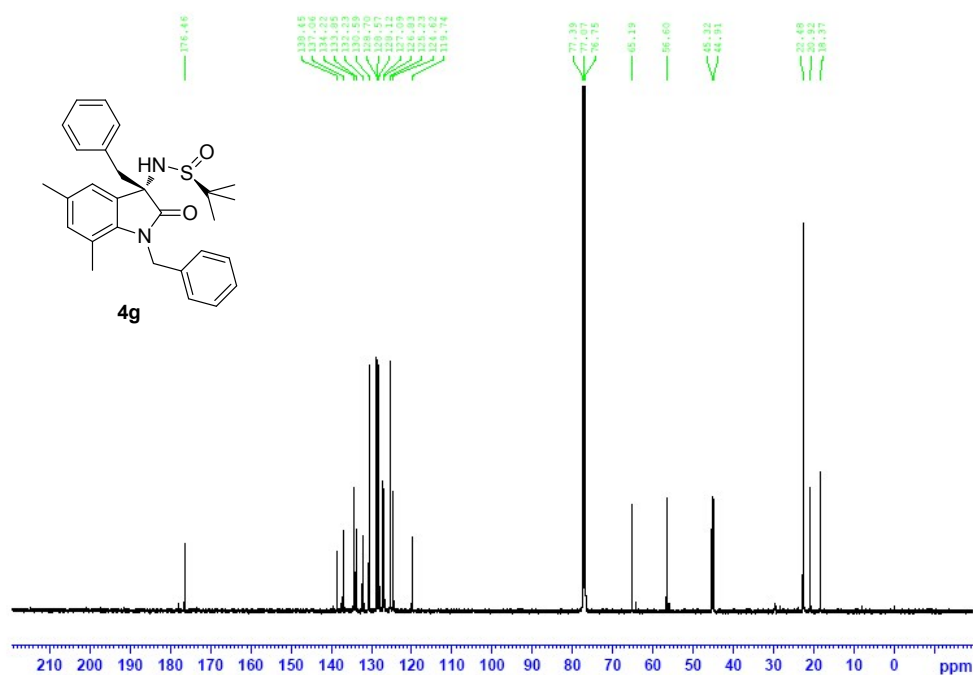
16. ¹³C NMR Spectrum of 4f.



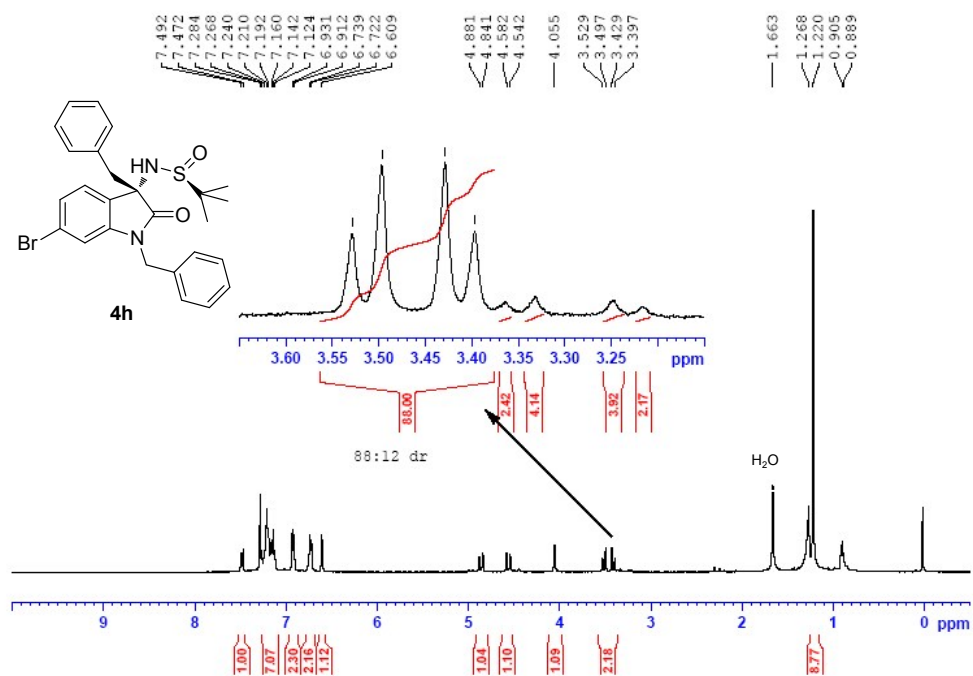
17. ¹H NMR Spectrum of 4g.



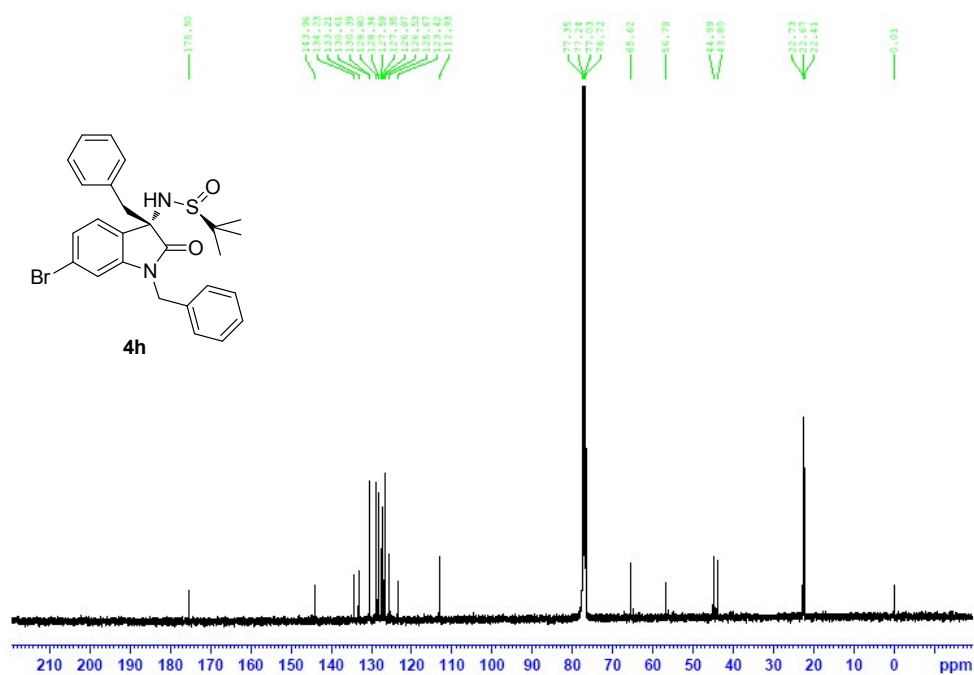
18. ¹³C NMR Spectrum of 4g.



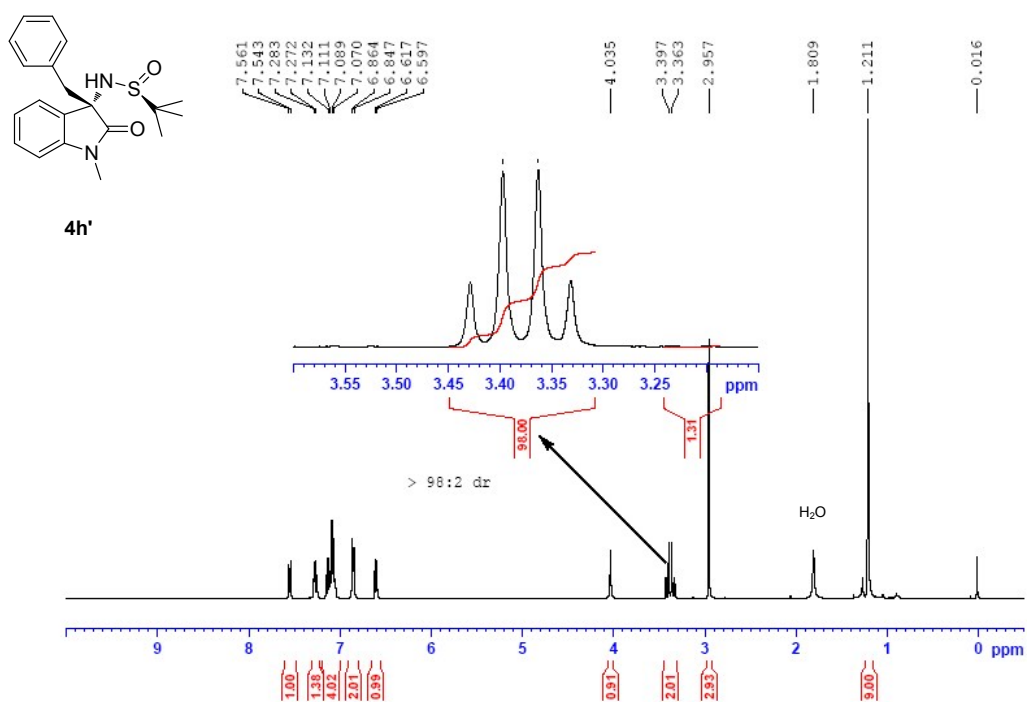
19. ¹H NMR Spectrum of 4h.



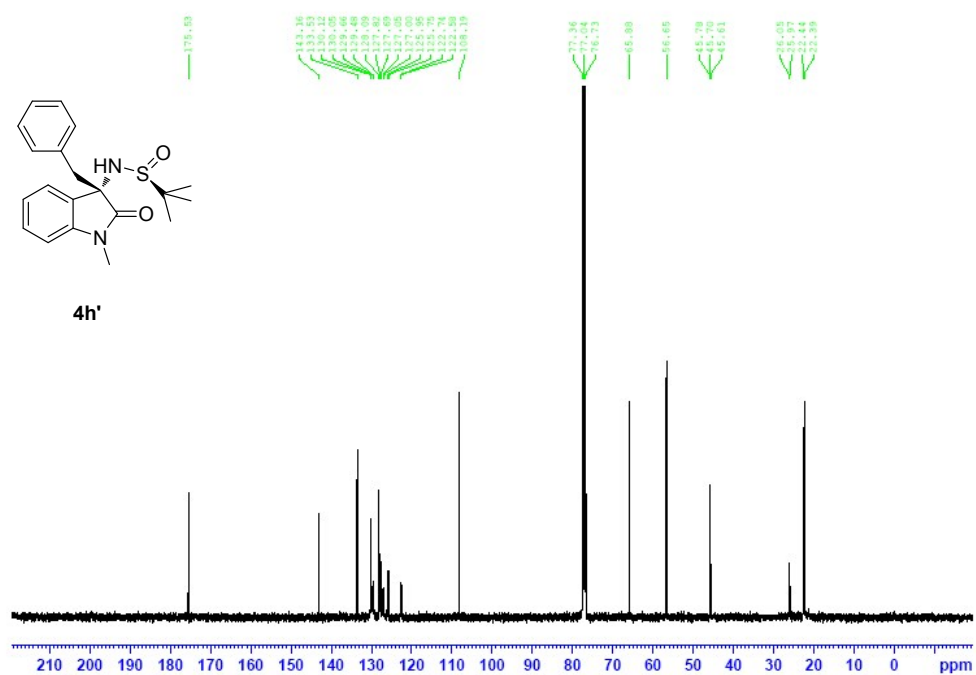
20. ¹³C NMR Spectrum of 4h.



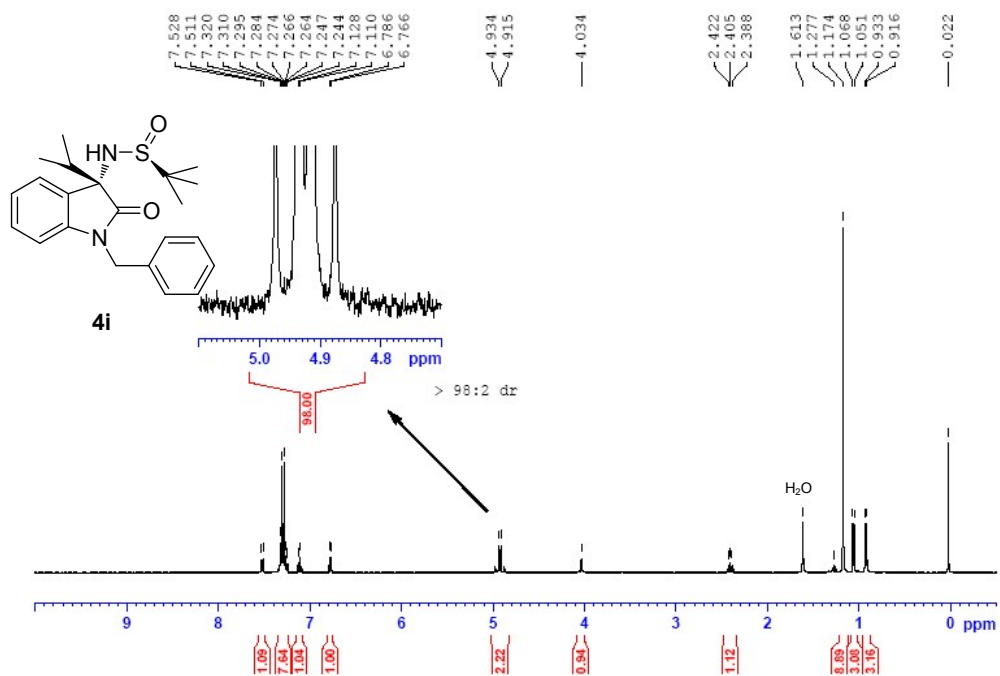
21. ¹H NMR Spectrum of 4h'.



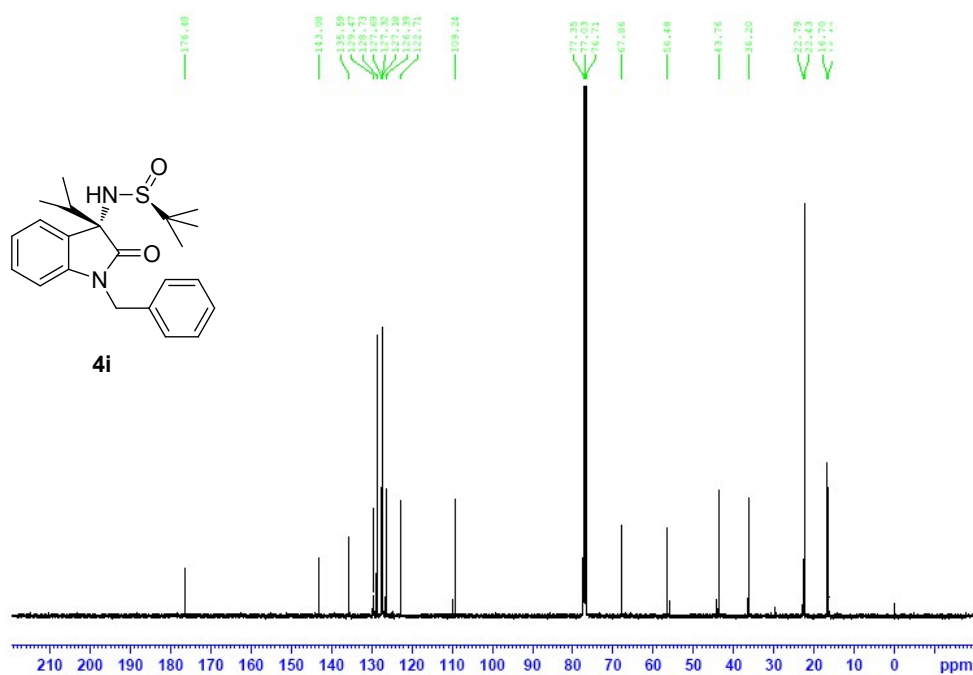
22. ¹³C NMR Spectrum of 4h'.



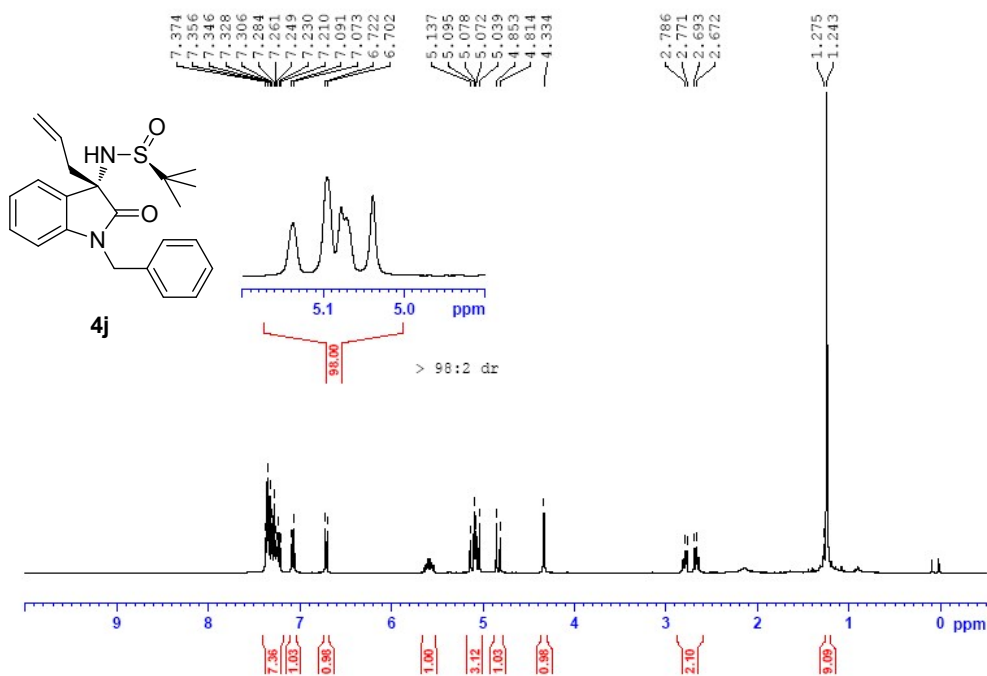
23. ¹H NMR Spectrum of 4i.



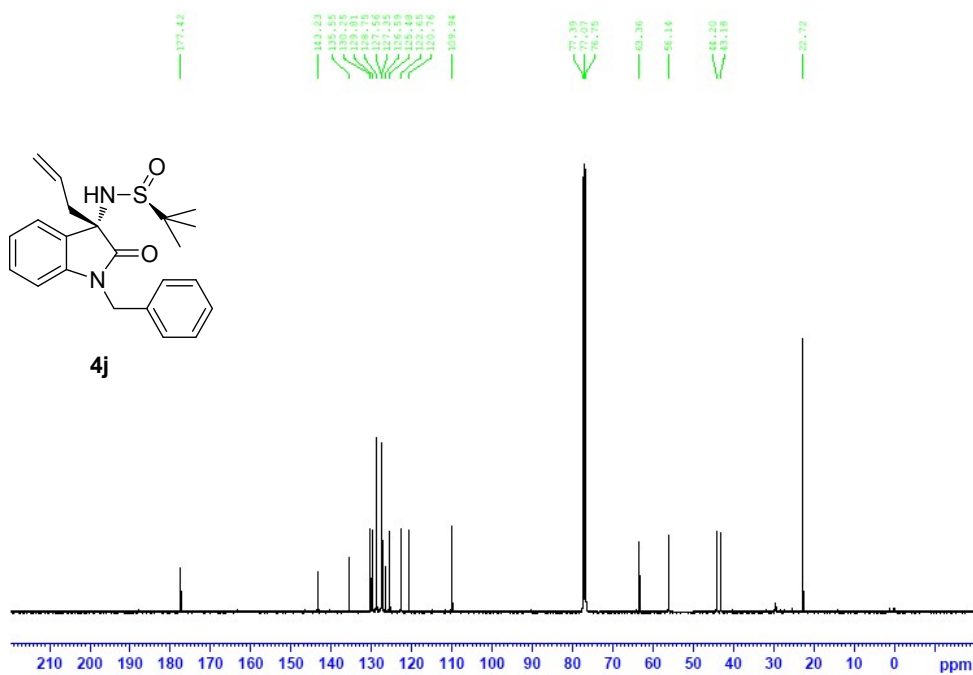
24. ¹³C NMR Spectrum of 4i.



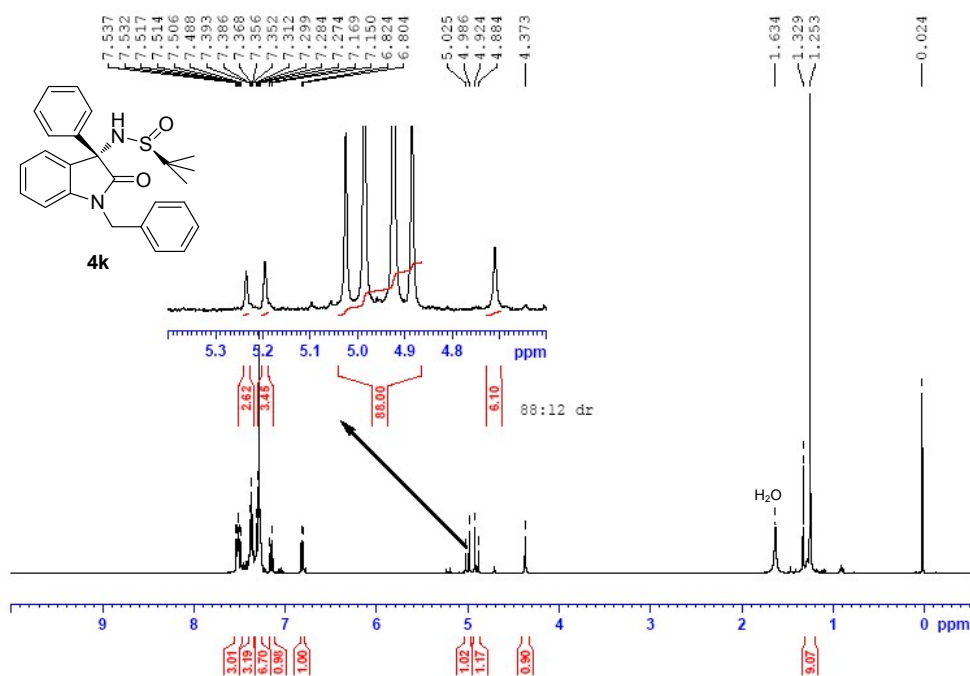
25. ¹H NMR Spectrum of 4j.



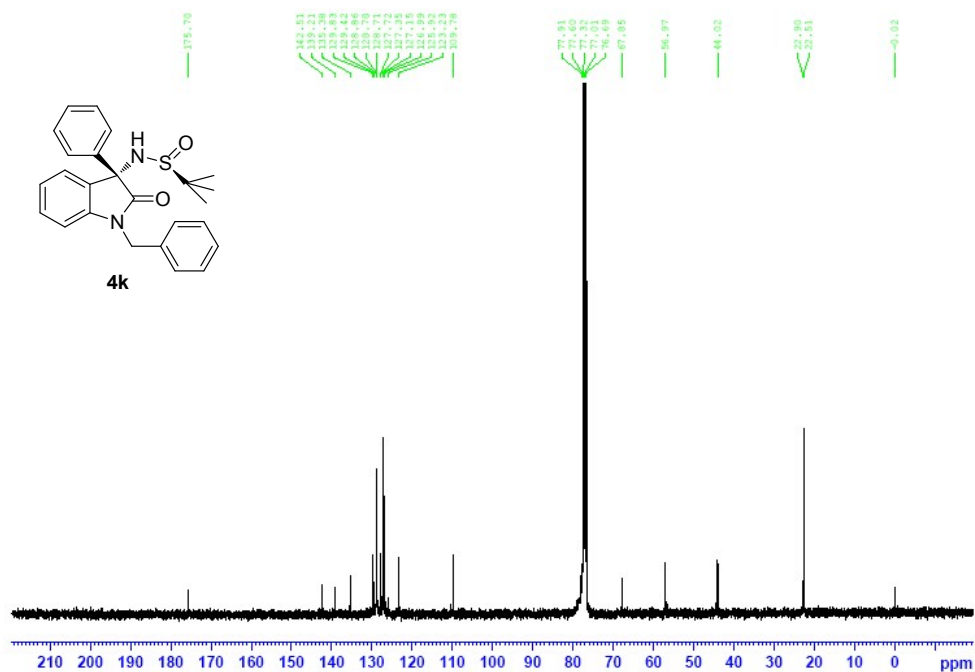
26. ¹³C NMR Spectrum of 4j.



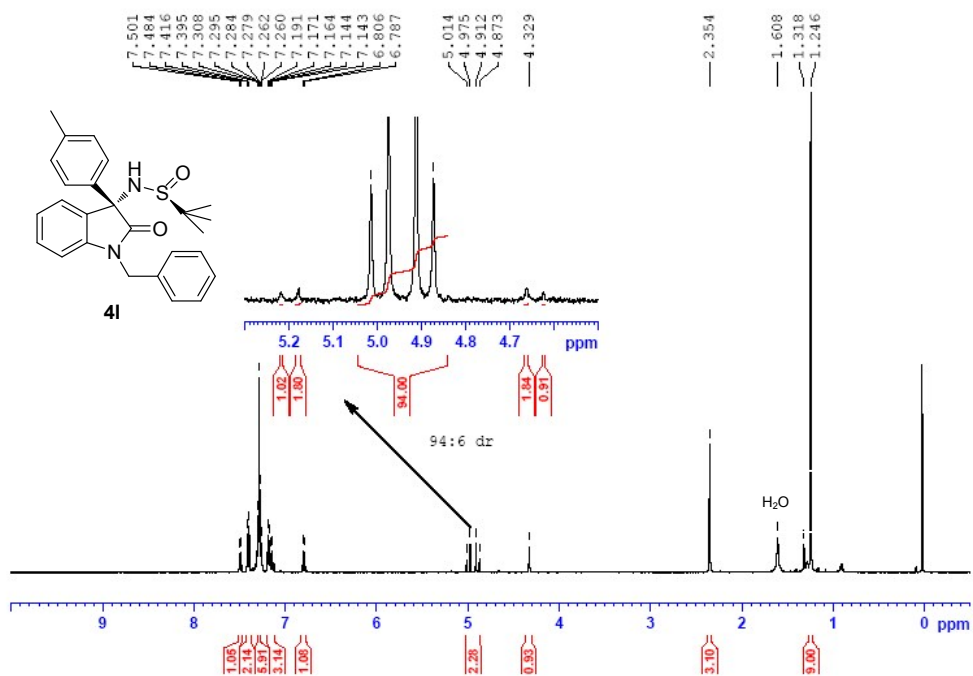
27. ¹H NMR Spectrum of 4k.



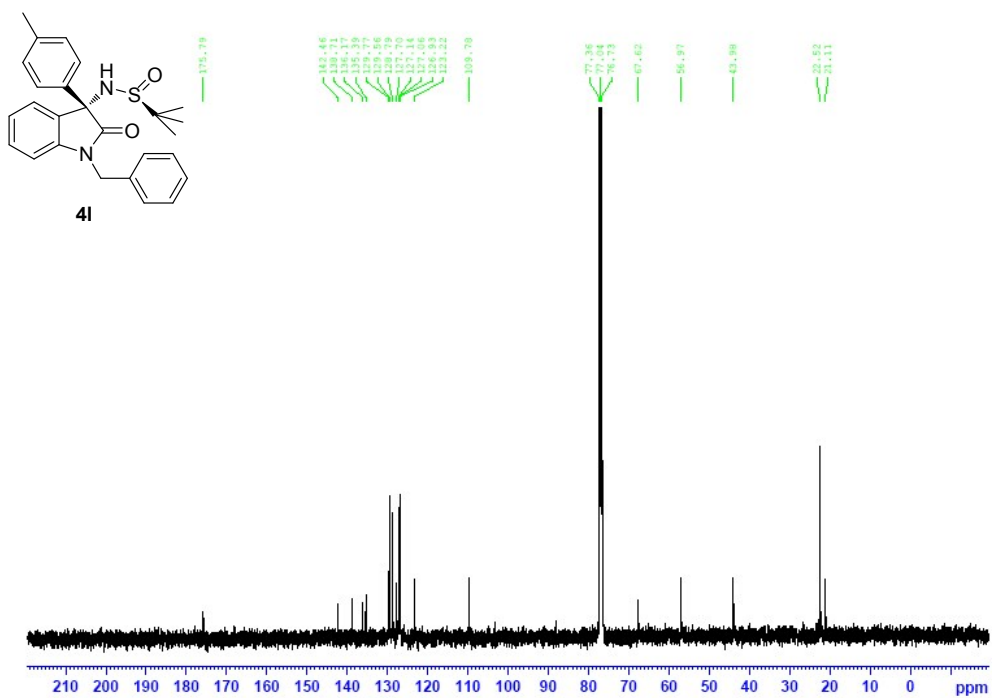
28. ¹³C NMR Spectrum of 4k.



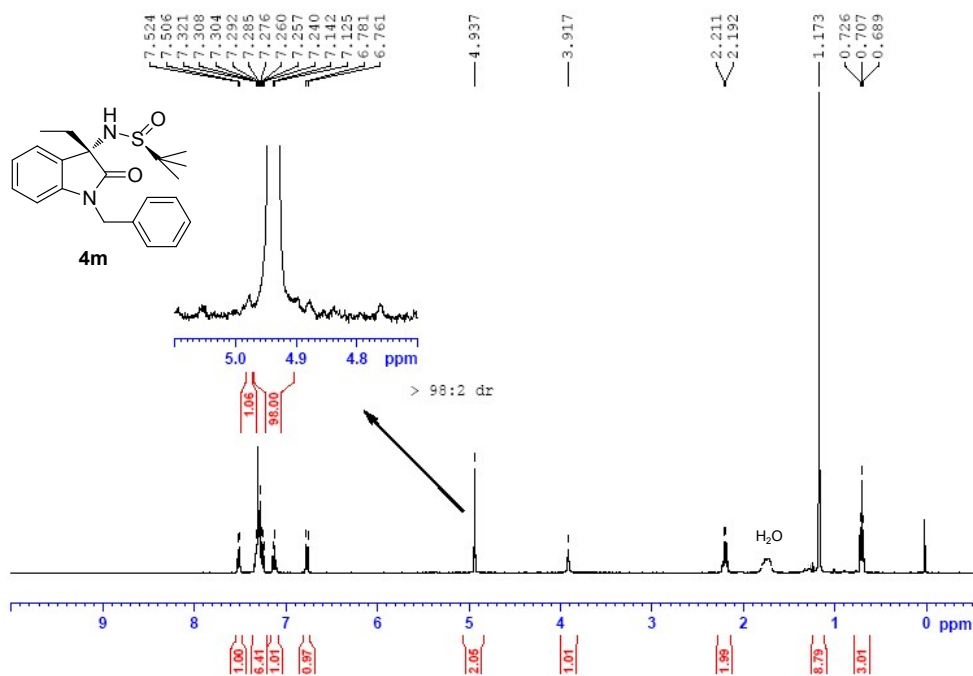
29. ¹H NMR Spectrum of 4l.



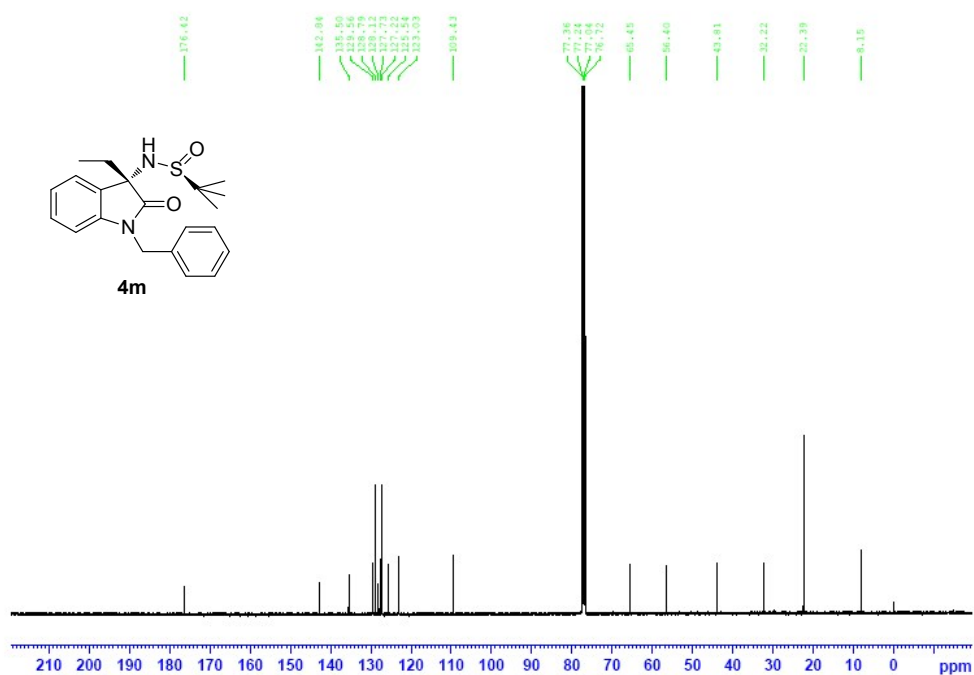
30. ¹³C NMR Spectrum of 4l.



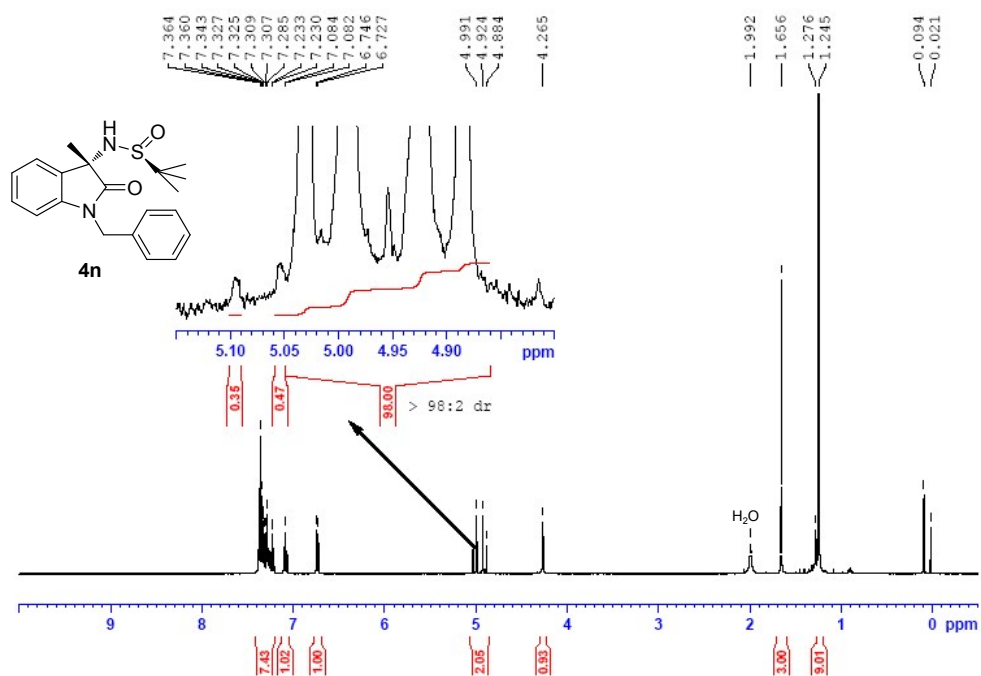
31. ¹H NMR Spectrum of 4m.



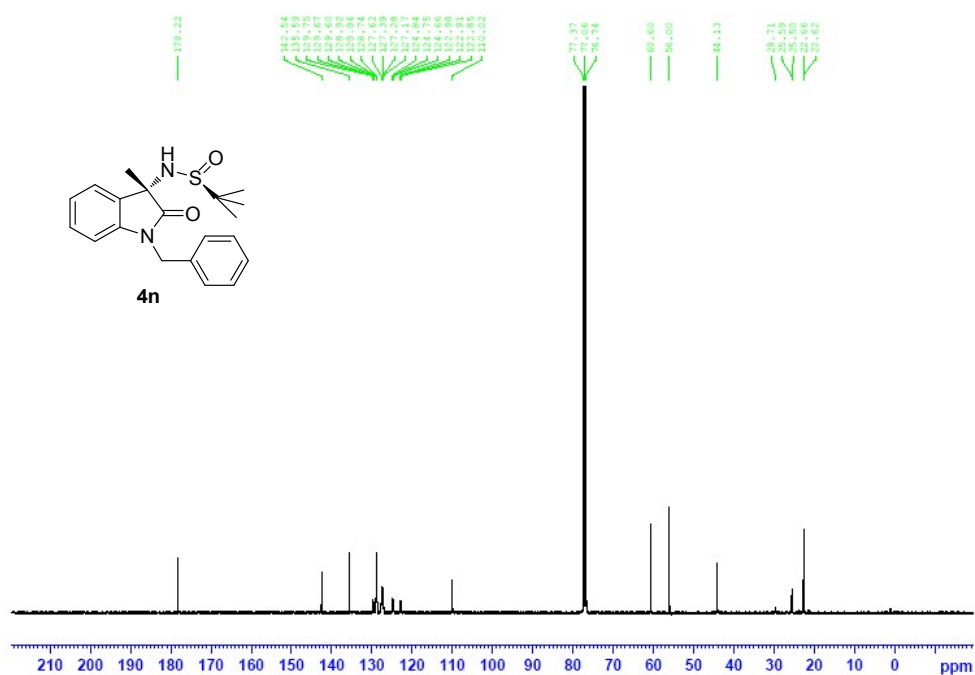
32. ¹³C NMR Spectrum of 4m.



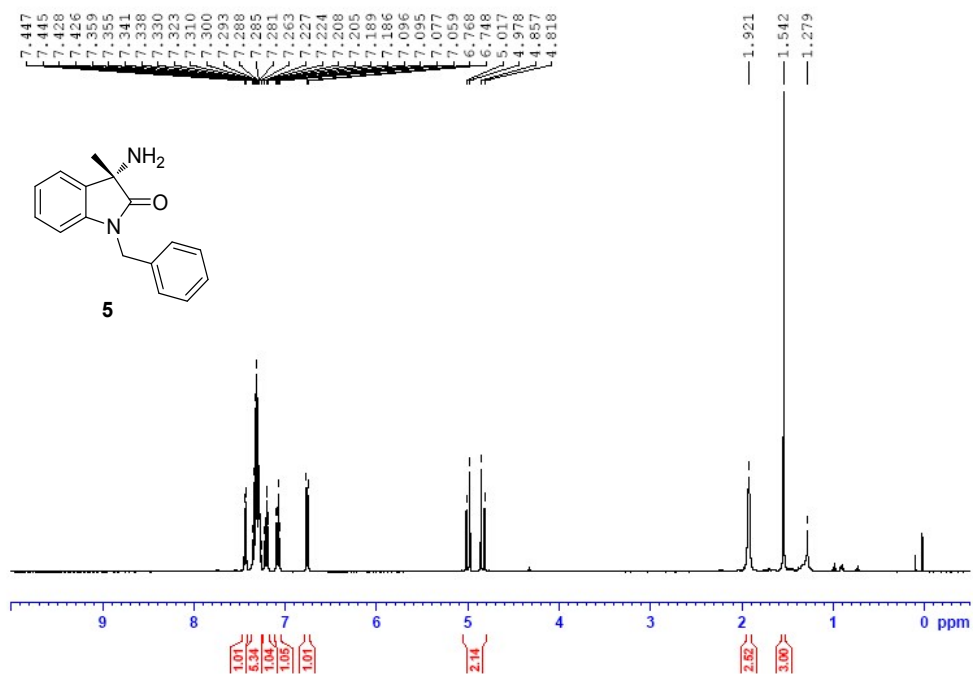
33. ¹H NMR Spectrum of 4n.



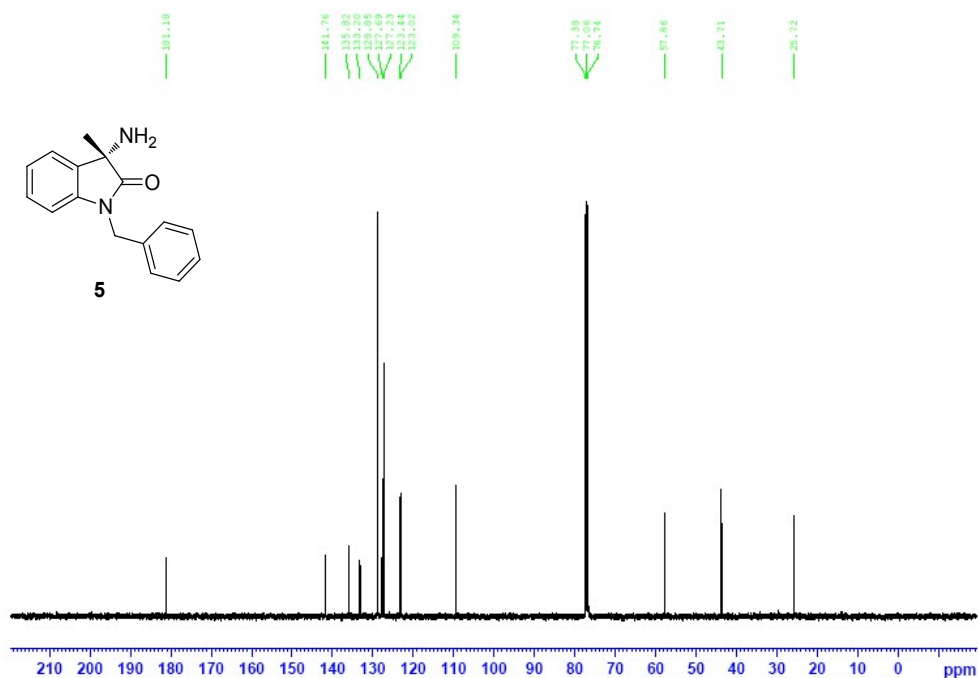
34. ¹³C NMR Spectrum of 4n.



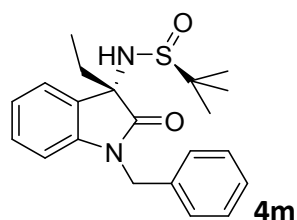
35. ¹H NMR Spectrum of 5.



36. ¹³C NMR Spectrum of 5.



37. Determination of the Absolute Configuration of **4m** by single-crystal X-ray analysis.



The absolute configuration of **4m** was confirmed by diffraction measurements on the crystal. The Supplementary crystallographic data were deposited as **CCDC 152303**. Copies of the data can be obtained free of charge on application to CCDC, 12 Union Road, Cambridge CB21EZ, U.K, e-mail: deposit@ccdc.cam.ac.uk.

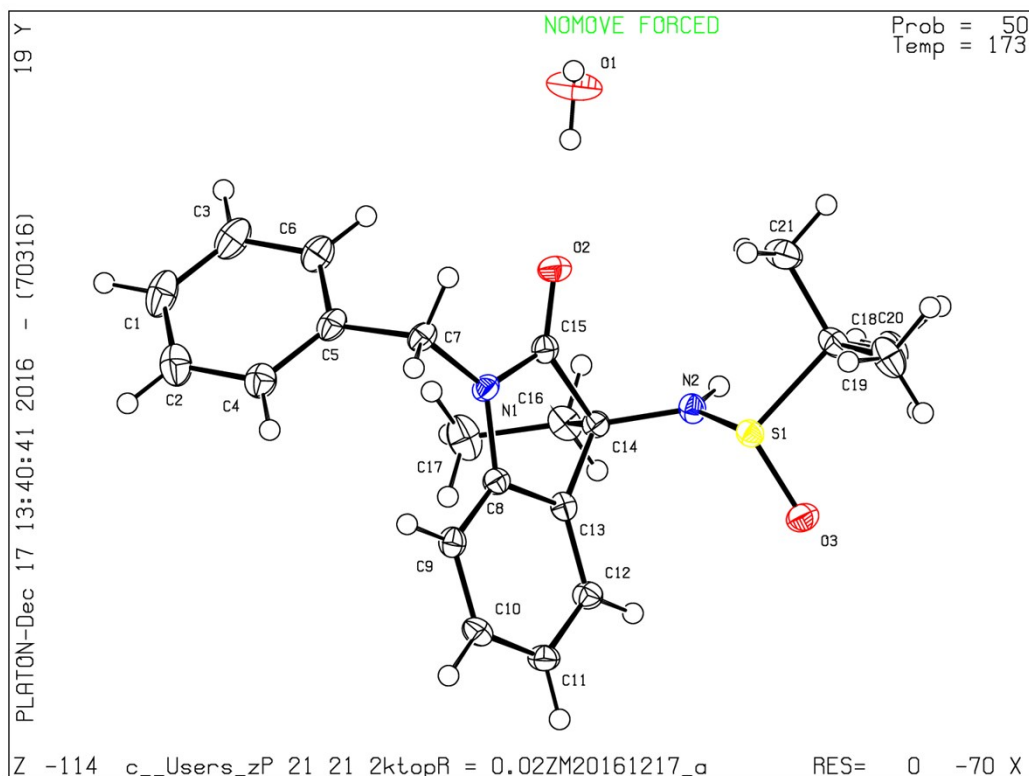


Figure X-ray structure of 4m

Table 1. Crystal data and structure refinement for 4m.

Identification code	4m	
Empirical formula	C ₂₁ H ₂₆ N ₂ O ₂ S	
Formula weight	370.51	
Temperature	173(2) K	
Wavelength	1.54184 Å	
Unit cell dimensions	a = 8.62560(10) Å	alpha = 90 deg.
	b = 22.3286(3) Å	beta = 90 deg.
	c = 10.6389(2) Å	gamma = 90 deg.

Table 2. Atomic coordinates (x 10⁴) and equivalent isotropic displacement parameters (Å² x 10³) for a 4m. U(eq) is defined as one third of the trace of the orthogonal U_{ij} tensor.

	x	y	z	U(eq)
S(1)	2101(1)	6332(1)	7152(1)	17(1)
O(3)	407(1)	6421(1)	7415(1)	23(1)
O(2)	5588(1)	5816(1)	5091(1)	23(1)
N(1)	4660(1)	6649(1)	4068(1)	18(1)

O(1)	8437(1)	5529(1)	6268(1)	38(1)
N(2)	2355(1)	5803(1)	6102(1)	18(1)
C(15)	4519(1)	6124(1)	4708(1)	17(1)
C(8)	3201(1)	6911(1)	3846(1)	17(1)
C(18)	2882(2)	5959(1)	8565(1)	21(1)
C(10)	1331(2)	7627(1)	3220(1)	21(1)
C(7)	6157(1)	6908(1)	3722(1)	20(1)
C(11)	158(2)	7266(1)	3677(1)	21(1)
C(5)	6701(1)	6731(1)	2421(1)	21(1)
C(9)	2890(2)	7461(1)	3295(1)	19(1)
C(12)	500(1)	6715(1)	4233(1)	19(1)
C(14)	2769(1)	5972(1)	4816(1)	17(1)
C(13)	2035(2)	6542(1)	4317(1)	17(1)
C(16)	2437(2)	5425(1)	3971(1)	23(1)
C(20)	1908(2)	5409(1)	8884(1)	28(1)
C(4)	6464(2)	7107(1)	1396(1)	25(1)
C(2)	7071(2)	6960(1)	222(1)	32(1)
C(6)	7525(2)	6197(1)	2249(1)	26(1)
C(21)	4576(2)	5804(1)	8301(1)	29(1)
C(3)	8125(2)	6054(1)	1074(2)	31(1)
C(1)	7902(2)	6436(1)	62(1)	34(1)
C(17)	2835(2)	5525(1)	2587(1)	33(1)
C(19)	2773(2)	6435(1)	9598(1)	30(1)

Table 3. Bond lengths [Å] and angles [deg] for a 4m.

S(1)-O(3)	1.5010(9)
S(1)-N(2)	1.6408(10)
S(1)-C(18)	1.8457(12)
O(2)-C(15)	1.2189(15)
N(1)-C(15)	1.3619(15)
N(1)-C(8)	1.4082(15)
N(1)-C(7)	1.4621(15)
O(1)-H(31)	0.80(2)
O(1)-H(32)	0.89(2)
N(2)-C(14)	1.4624(15)
N(2)-H(2)	0.8800
C(15)-C(14)	1.5514(16)
C(8)-C(9)	1.3870(16)
C(8)-C(13)	1.3933(17)
C(18)-C(20)	1.5253(17)
C(18)-C(21)	1.5273(19)
C(18)-C(19)	1.5316(18)

C(10)-C(11)	1.3822(18)
C(10)-C(9)	1.3970(18)
C(10)-H(10)	0.9500
C(7)-C(5)	1.5141(17)
C(7)-H(7A)	0.9900
C(7)-H(7B)	0.9900
C(11)-C(12)	1.3976(17)
C(11)-H(11)	0.9500
C(5)-C(4)	1.3918(19)
C(5)-C(6)	1.4007(18)
C(9)-H(9)	0.9500
C(12)-C(13)	1.3823(17)
C(12)-H(12)	0.9500
C(14)-C(13)	1.5187(16)
C(14)-C(16)	1.5431(16)
C(16)-C(17)	1.5288(18)
C(16)-H(16A)	0.9900
C(16)-H(16B)	0.9900
C(20)-H(20A)	0.9800
C(20)-H(20B)	0.9800
C(20)-H(20C)	0.9800
C(4)-C(2)	1.394(2)
C(4)-H(4)	0.9500
C(2)-C(1)	1.384(2)
C(2)-H(2A)	0.9500
C(6)-C(3)	1.389(2)
C(6)-H(6)	0.9500
C(21)-H(21A)	0.9800
C(21)-H(21B)	0.9800
C(21)-H(21C)	0.9800
C(3)-C(1)	1.387(2)
C(3)-H(3)	0.9500
C(1)-H(1)	0.9500
C(17)-H(17A)	0.9800
C(17)-H(17B)	0.9800
C(17)-H(17C)	0.9800
C(19)-H(19A)	0.9800
C(19)-H(19B)	0.9800
C(19)-H(19C)	0.9800
O(3)-S(1)-N(2)	110.56(5)
O(3)-S(1)-C(18)	105.27(6)
N(2)-S(1)-C(18)	100.40(6)
C(15)-N(1)-C(8)	111.24(10)
C(15)-N(1)-C(7)	123.11(10)

C(8)-N(1)-C(7)	125.60(10)
H(31)-O(1)-H(32)	108(2)
C(14)-N(2)-S(1)	118.98(8)
C(14)-N(2)-H(2)	120.5
S(1)-N(2)-H(2)	120.5
O(2)-C(15)-N(1)	125.72(11)
O(2)-C(15)-C(14)	126.03(11)
N(1)-C(15)-C(14)	108.21(9)
C(9)-C(8)-C(13)	122.41(11)
C(9)-C(8)-N(1)	127.73(11)
C(13)-C(8)-N(1)	109.81(10)
C(20)-C(18)-C(21)	112.69(11)
C(20)-C(18)-C(19)	111.37(11)
C(21)-C(18)-C(19)	110.36(12)
C(20)-C(18)-S(1)	110.12(9)
C(21)-C(18)-S(1)	107.56(9)
C(19)-C(18)-S(1)	104.35(8)
C(11)-C(10)-C(9)	122.05(11)
C(11)-C(10)-H(10)	119.0
C(9)-C(10)-H(10)	119.0
N(1)-C(7)-C(5)	113.58(10)
N(1)-C(7)-H(7A)	108.8
C(5)-C(7)-H(7A)	108.8
N(1)-C(7)-H(7B)	108.8
C(5)-C(7)-H(7B)	108.8
H(7A)-C(7)-H(7B)	107.7
C(10)-C(11)-C(12)	120.52(12)
C(10)-C(11)-H(11)	119.7
C(12)-C(11)-H(11)	119.7
C(4)-C(5)-C(6)	119.09(12)
C(4)-C(5)-C(7)	120.82(11)
C(6)-C(5)-C(7)	120.00(12)
C(8)-C(9)-C(10)	116.40(11)
C(8)-C(9)-H(9)	121.8
C(10)-C(9)-H(9)	121.8
C(13)-C(12)-C(11)	118.36(11)
C(13)-C(12)-H(12)	120.8
C(11)-C(12)-H(12)	120.8
N(2)-C(14)-C(13)	116.17(10)
N(2)-C(14)-C(16)	107.24(9)
C(13)-C(14)-C(16)	112.49(10)
N(2)-C(14)-C(15)	111.30(10)
C(13)-C(14)-C(15)	101.32(9)
C(16)-C(14)-C(15)	108.05(10)

C(12)-C(13)-C(8)	120.26(11)
C(12)-C(13)-C(14)	130.96(11)
C(8)-C(13)-C(14)	108.72(11)
C(17)-C(16)-C(14)	113.85(10)
C(17)-C(16)-H(16A)	108.8
C(14)-C(16)-H(16A)	108.8
C(17)-C(16)-H(16B)	108.8
C(14)-C(16)-H(16B)	108.8
H(16A)-C(16)-H(16B)	107.7
C(18)-C(20)-H(20A)	109.5
C(18)-C(20)-H(20B)	109.5
H(20A)-C(20)-H(20B)	109.5
C(18)-C(20)-H(20C)	109.5
H(20A)-C(20)-H(20C)	109.5
H(20B)-C(20)-H(20C)	109.5
C(5)-C(4)-C(2)	120.30(13)
C(5)-C(4)-H(4)	119.8
C(2)-C(4)-H(4)	119.8
C(1)-C(2)-C(4)	120.31(14)
C(1)-C(2)-H(2A)	119.8
C(4)-C(2)-H(2A)	119.8
C(3)-C(6)-C(5)	120.13(14)
C(3)-C(6)-H(6)	119.9
C(5)-C(6)-H(6)	119.9
C(18)-C(21)-H(21A)	109.5
C(18)-C(21)-H(21B)	109.5
H(21A)-C(21)-H(21B)	109.5
C(18)-C(21)-H(21C)	109.5
H(21A)-C(21)-H(21C)	109.5
H(21B)-C(21)-H(21C)	109.5
C(1)-C(3)-C(6)	120.42(13)
C(1)-C(3)-H(3)	119.8
C(6)-C(3)-H(3)	119.8
C(2)-C(1)-C(3)	119.73(13)
C(2)-C(1)-H(1)	120.1
C(3)-C(1)-H(1)	120.1
C(16)-C(17)-H(17A)	109.5
C(16)-C(17)-H(17B)	109.5
H(17A)-C(17)-H(17B)	109.5
C(16)-C(17)-H(17C)	109.5
H(17A)-C(17)-H(17C)	109.5
H(17B)-C(17)-H(17C)	109.5
C(18)-C(19)-H(19A)	109.5
C(18)-C(19)-H(19B)	109.5

H(19A)-C(19)-H(19B)	109.5
C(18)-C(19)-H(19C)	109.5
H(19A)-C(19)-H(19C)	109.5
H(19B)-C(19)-H(19C)	109.5