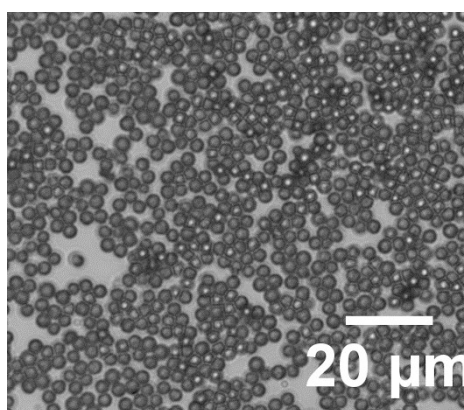


## Orientation-Dependent Induced-Charge Electrophoresis of Magnetic Metal-coated Janus Particles with Different Coating Thicknesses: Supplementary information

*Chia-Hsien Lin, Yu-Liang Chen and Hong-Ren Jiang\**

*Institute of Applied Mechanics, National Taiwan University. No.1, Sec. 4, Roosevelt Rd., Da'an Dist., Taipei City 106, Taiwan (R.O.C.)*

**Figure S1:** The monolayer of 3  $\mu\text{m}$  superparamagnetic PS particles.



**Figure S2:** The relation between the velocities of magnetic Janus particles and different frequency of the electric field. The positive values indicate motion in the direction of the dielectric side and vice-versa.

