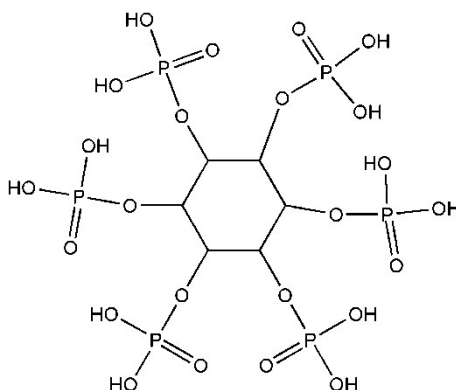


Electronic Supplementary Information

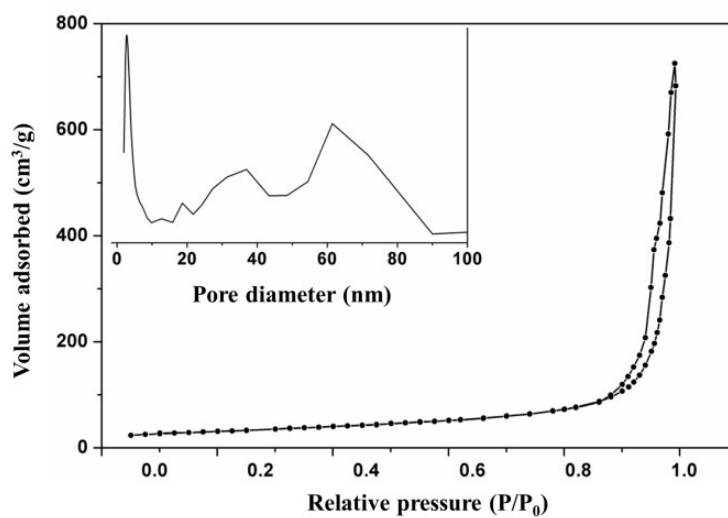
Supplementary Table 1 Different solutions used for hydrothermal HA preparation

| Products | Solution | Ca/mmol | Cu/mmol | IP6/ μ L |
|-----------|----------|---------|---------|--------------|
| Pure-HA | S0 | 3 | / | / |
| IP6-HA | S1 | 3 | / | 100 |
| Cu-HA | S2 | 2.85 | 0.15 | / |
| Cu-IP6-HA | S3 | 2.85 | 0.15 | 100 |

Supplementary Fig. S1 The molecular structure of IP6



Supplementary Fig. S2 Nitrogen adsorption-desorption isotherms and the corresponding pore-size distribution curves of the Cu- IP6-HA sample



Supplementary Fig. S3 SEM micrographs of products prepared with different urea concentration

