

Supporting Information

TiO₂ hollow spheres on reduced graphene oxide with high rate performance as anodes for lithium-ion batteries

Ji-Cai Liang,^b Xun-Long Zhang,^a Xiaojie Zhai^a, Longjian Zhang^c, Wenzheng Wu^{c*} and Kai-Feng Yu^{a*}

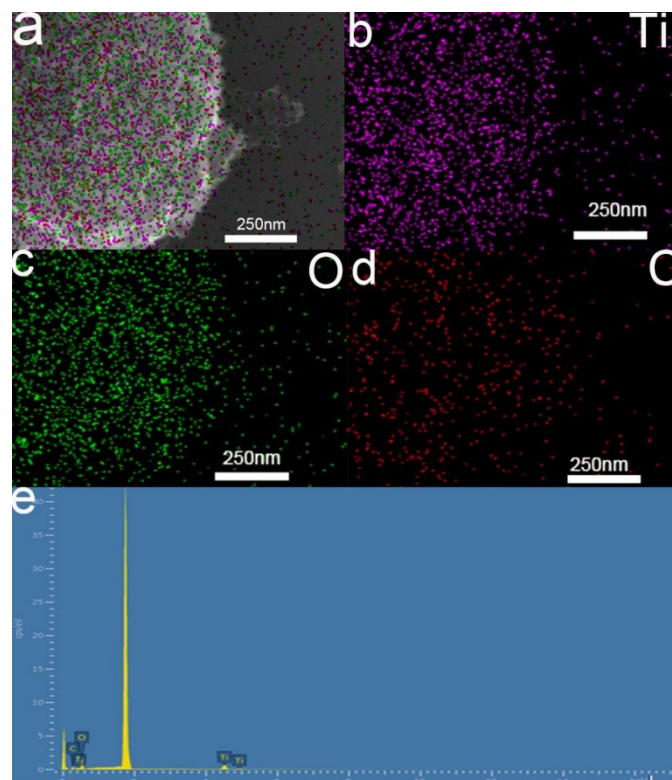


Figure S1. (a) Elemental mapping of TiO₂@RGO nanocomposite (b-d) Ti (violet), O (green), and C (red) distribution in the selected area. (e) The bottom panel shows the EDX spectrum of the selected area.