

Supporting Information

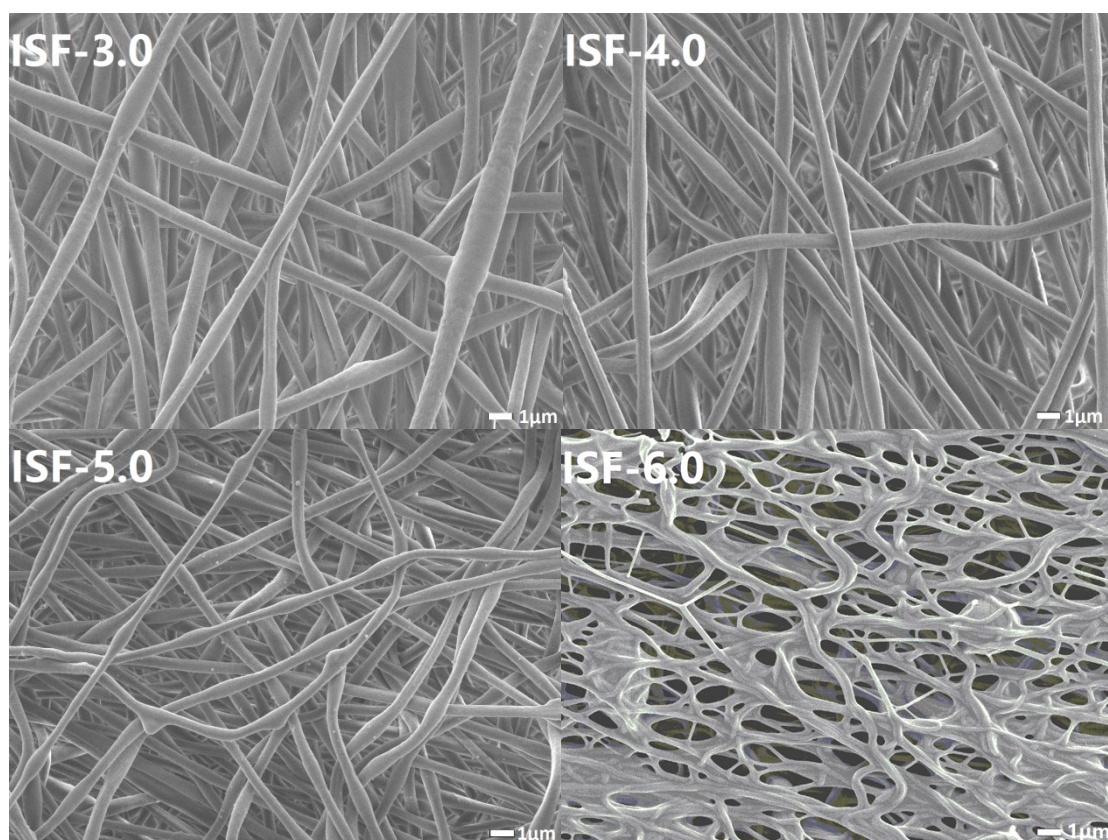


Fig. S1. SEM images of ISFs at the heating rate of 3.0 4.0 5.0 and 6.0 °C/min, respectively.

The fibrous morphologies of ISF was no significantly changed while the heating rate reached to 4.0 °C/min. However, this morphology has changed when the heating rate elevated to 5.0 °C/min, it have some teardrop-shaped solid mass come into fiber surface. And the fibrous morphologies were eventually destroyed after the heating rate increased to 6.0 °C/min.

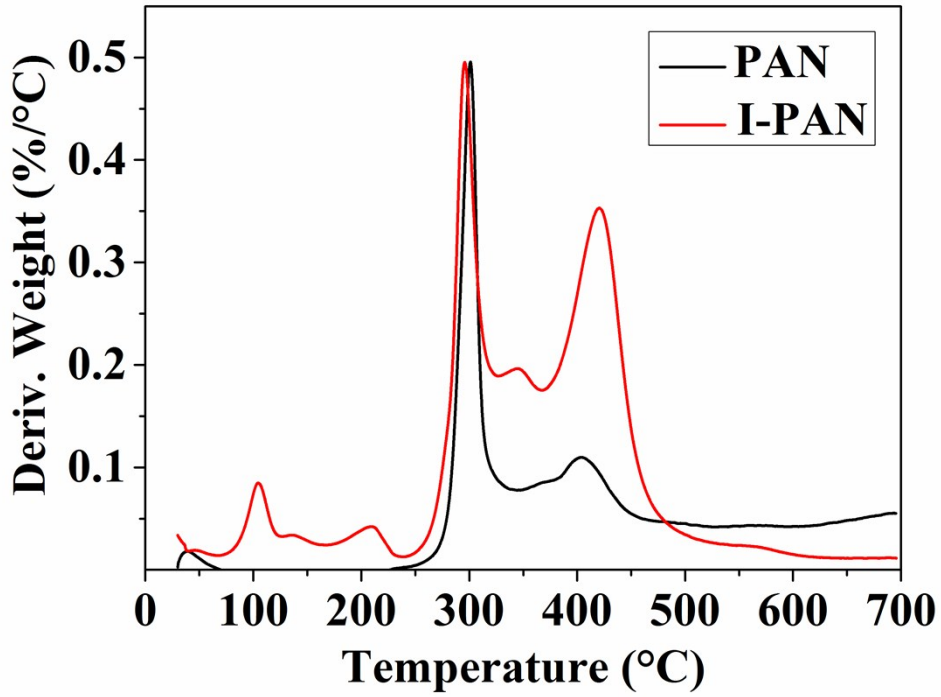


Fig. S2 DTG curves of PAN and I-PAN based precursor fibers.

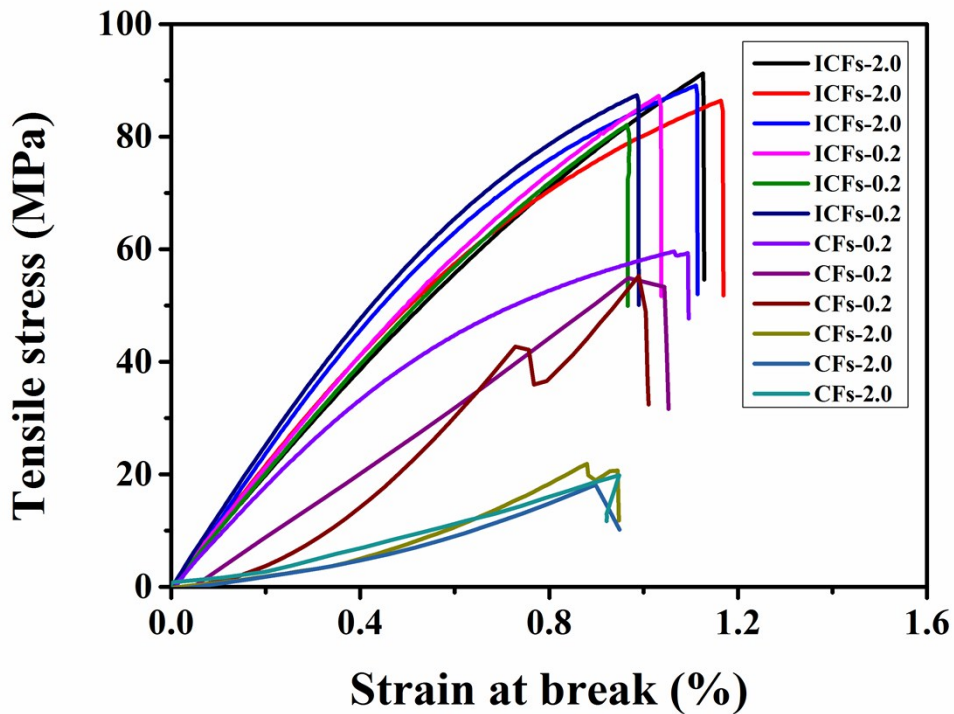


Fig. S3 The tensile stress-strain curves of the CFs-0.2, CFs-2.0, ICFs-0.2, and ICFs-2.0.