

Synthesis of Polyethylene/Exfoliated MoS₂ Nanocomposites by In Situ Exfoliation Polymerization Using Ziegler-Natta catalyst intercalated MoS₂

Hao Zhang,^a He-Xin Zhang,^{b,c*} and Keun-Byoung Yoon^{c*}

^aCollege of Food Science and Engineering, National Engineering Lab. for Wheat and Corn Deep Processing, Jilin Agricultural University, Changchun, China

^bSchool of Chemistry and Chemical Engineering, Anhui University of Technology, China (Email: polyhx@ciac.ac.cn)

^cDepartment of Polymer Science and Engineering, Kyungpook National University, Korea (Email: kbyoon@knu.ac.kr)

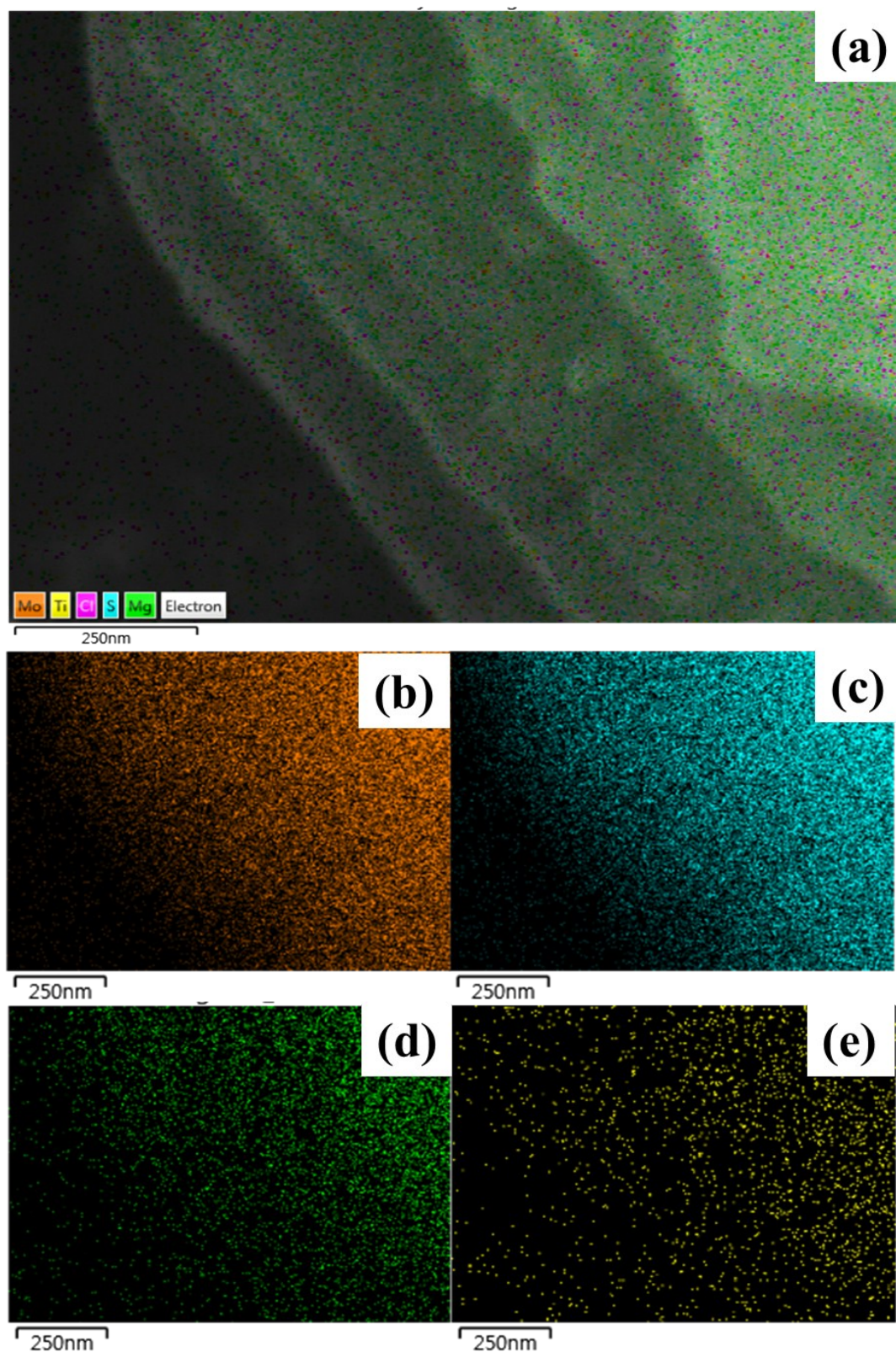


Figure S1. SEM image of (a) $\text{MoS}_2\text{-MgCl/TiCl}_4$ catalyst edge and the EDS elemental mapping images of (b) Mo, (c) S, (d) Mg and (e) Ti from (a)

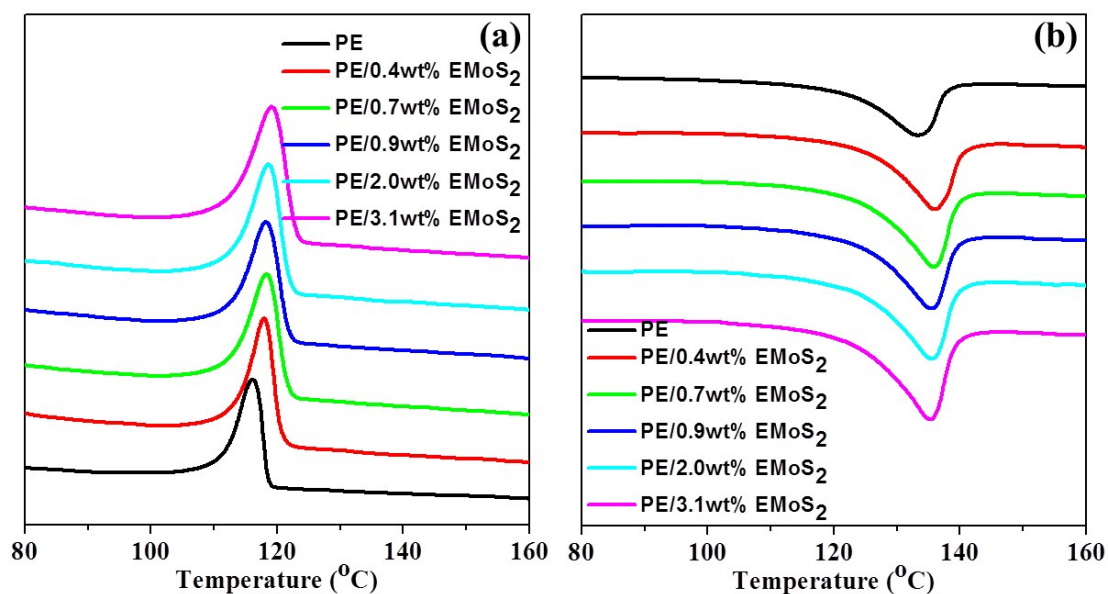


Figure S2. DSC (a) cooling and (b) heating curves of PE and PE/EMoS₂ nanocomposites with different EMoS₂ contents.

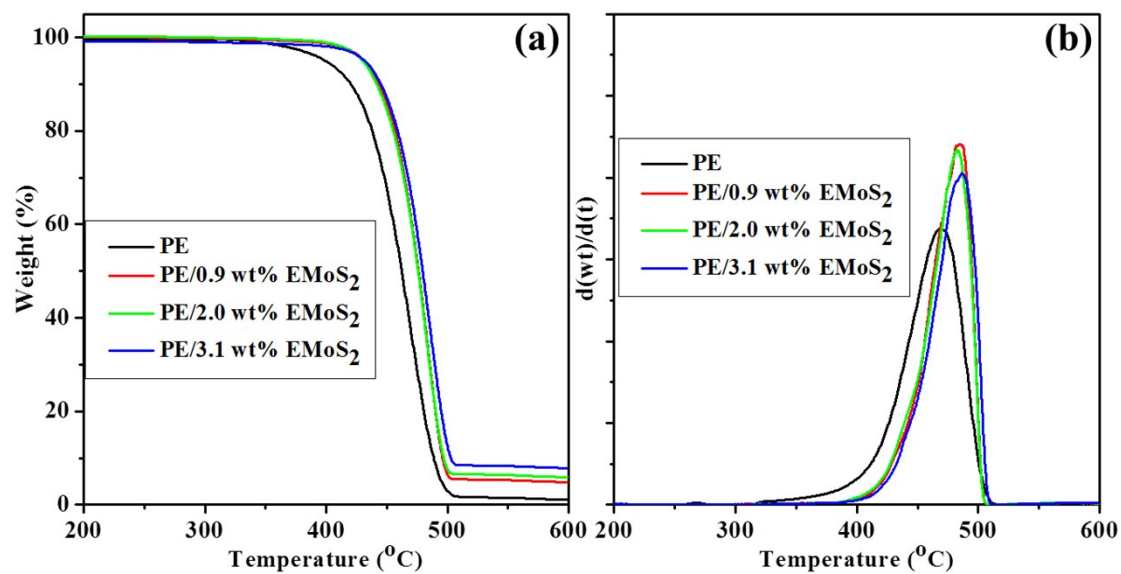


Figure S3. TGA and DTG curves of PE and PE/EMoS₂ nanocomposites.