

Supplementary information

Determination of ADH in textiles using HPLC-MS/MS method and the study of its adsorption behaviour towards formaldehyde

Jinxiong Tao,^{*,a} Ziwei Lin,^a Haixuan Zhang,^a Zhuoming Wu^a and Haihui Cao^b

^a Shenzhen Academy of Metrology and Quality Inspection, Shenzhen 518000, P. R. China

^b Embry (China) Garments Co. Ltd, Shenzhen, Guangdong, 518000, P. R. China.

*Corresponding author: E-mail: taojinxiong@yeah.net; Tel: +86-0755-27528470

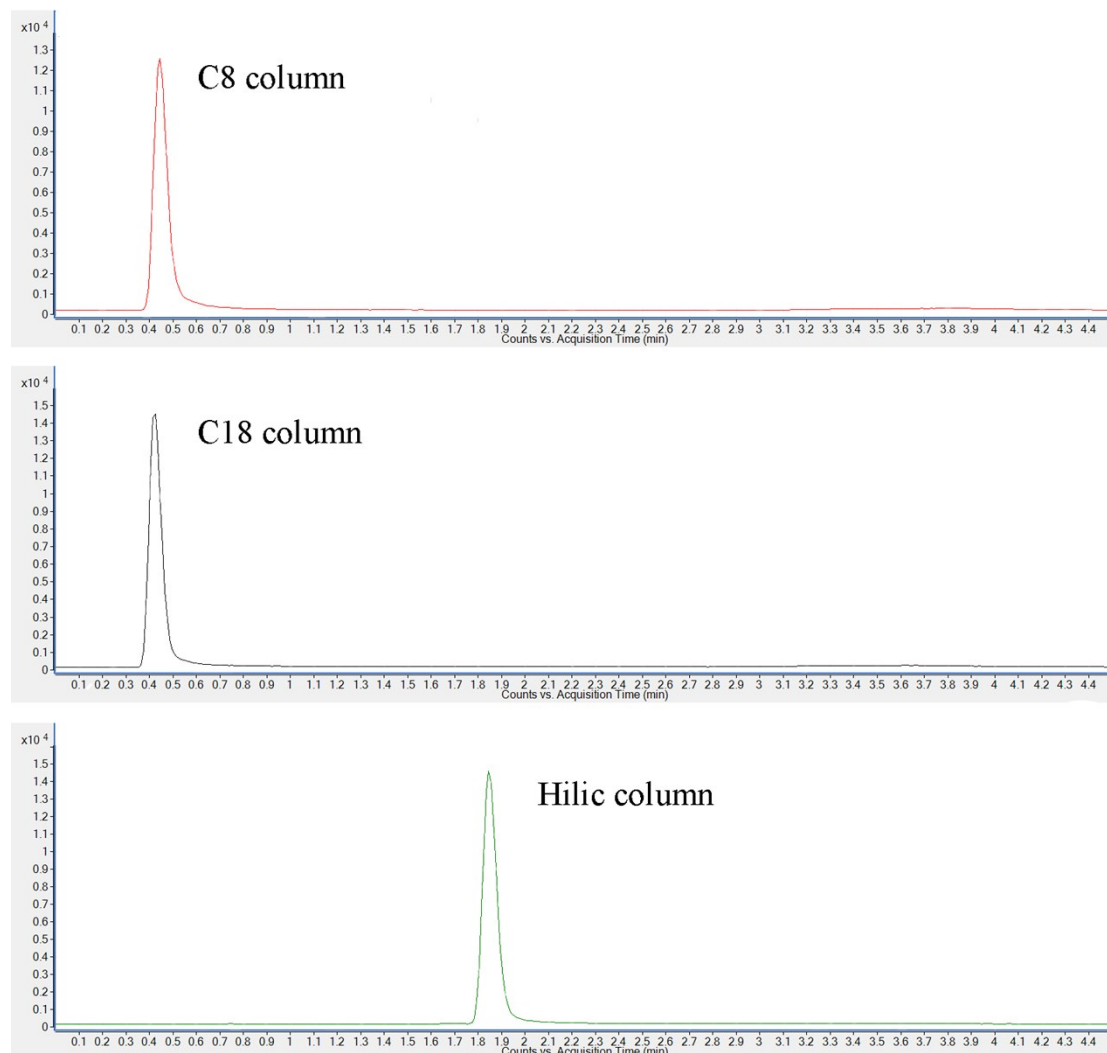
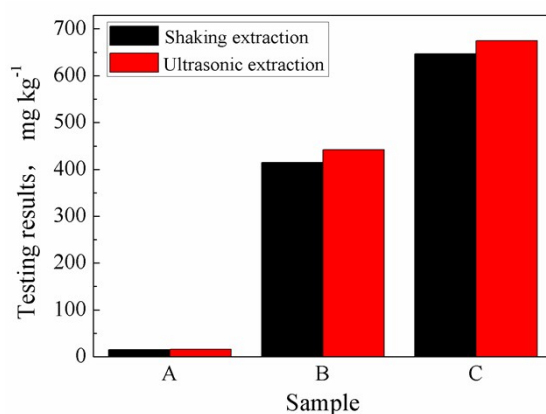


Fig. S1 The separation effect of different columns

Table S1 Determination value of ADH in textiles under different extracting modes

sample	extracting mode	testing results, mg kg ⁻¹		
		parallel sample 1	parallel sample 2	average
A	shaking bath extraction	15	15	15
	ultrasonic extraction	16	16	16
B	shaking bath extraction	417	413	415
	ultrasonic extraction	444	441	442
C	shaking bath extraction	650	644	647
	ultrasonic extraction	669	681	675

**Fig. S2** Comparison of the extraction efficiencies on ADH in textiles under different extracting modes**Table S2** Recovery rate and RSD values of ADH determination in real samples

Items	Testing results		
Added (mg L ⁻¹)	0.20	0.50	1.00
Found (mg L ⁻¹)	0.20	0.43	0.86
	0.19	0.44	0.85
	0.19	0.44	0.86
	0.19	0.43	0.87
	0.19	0.44	0.87
	0.19	0.44	0.87
	0.20	0.44	0.88
	0.20	0.44	0.89
	0.19	0.44	0.87
Average value/(mg L ⁻¹)	0.19	0.44	0.87
Recovery (%)	95	88	87
SD (mg L ⁻¹)	0.005	0.021	0.045
RSD (%)	2.7	4.8	5.2

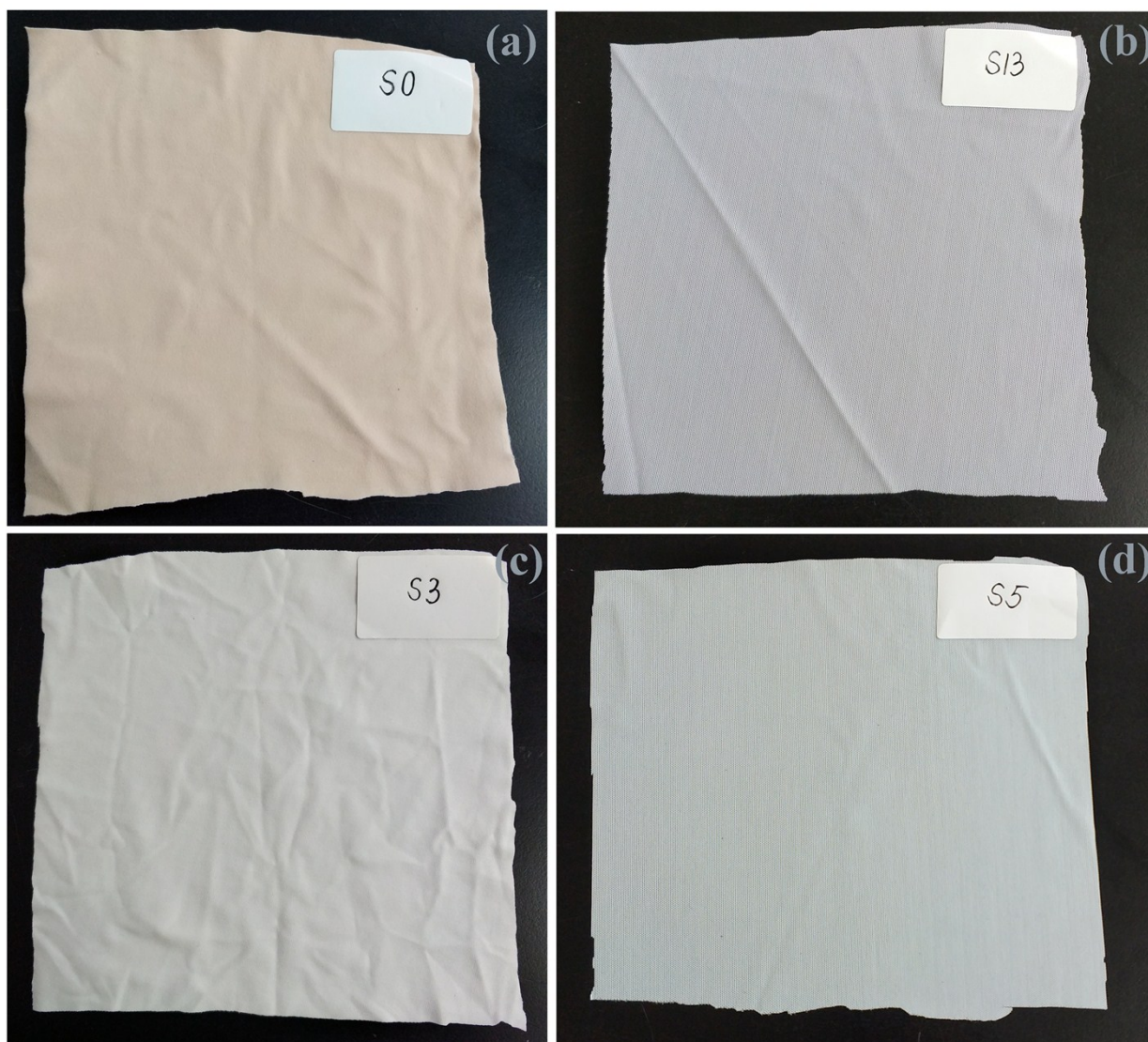


Fig. S3 Photographs of samples S0, S3, S5 and S11



Fig. S4 Reaction mechanism of ADH and formaldehyde in the balance of adsorption and desorption.