

Figure S1. The plot of $\ln K$ versus $1/T$ for the MQAS/BSA mixtures.

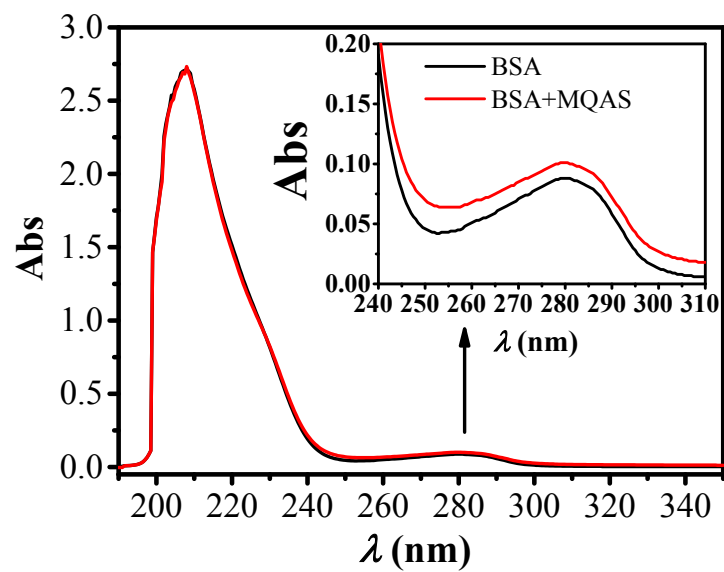


Figure S2. UV-vis absorption spectra of BSA and MQAS/BSA mixtures, $[BSA]=2\times 10^{-6} \text{ mol}\cdot\text{L}^{-1}$, $[MQAS]=2\times 10^{-5} \text{ mol}\cdot\text{L}^{-1}$.