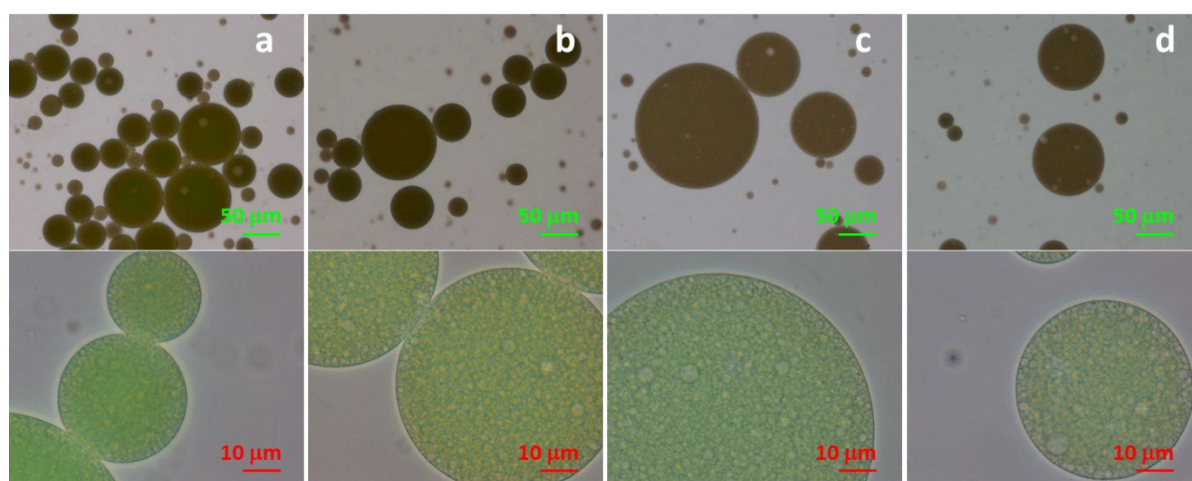


658 SUPPLEMENTARY DATA.

659

660 **S-Figure 1. Microscope images of collagen peptide (CP)- $W_1/O/W_2$ double emulsions**
661 **with different water fractions in the outer $W_1/O/W_2$ emulsions (Φ_{W_2}): (a) $\Phi_{W_2} = 50\%$.**
662 **(b) $\Phi_{W_2} = 60\%$, (c) $\Phi_{W_2} = 70\%$ and (d) $\Phi_{W_2} = 80\%$.** All emulsions were prepared under the
663 following conditions: 10% collagen peptide and 1% NaCl concentration in the inner water
664 phase; 40% water fraction in the inner W_1/O emulsions.

665



667

668

669

670

671

672

673