

Supporting Information

Selective hydrogenation of nitroarenes to amines by ligand assisted Pd nanoparticles: Influence of donor ligands on catalytic activity

Gauravjyoti D. Kalita^a, Podma P. Sarmah^a, Pallab K. Saikia^b, Lakshi Saikia^b, Pankaj Das^{b*}

^aDepartment of Chemistry, Dibrugarh University, Dibrugarh, Assam, India, 786004

^bMaterials Sciences and Technology Division, CSIR-North East Institute of Science and Technology,

Jorhat, Assam, India, 785006

E-mail: pankajdas@dibru.ac.in

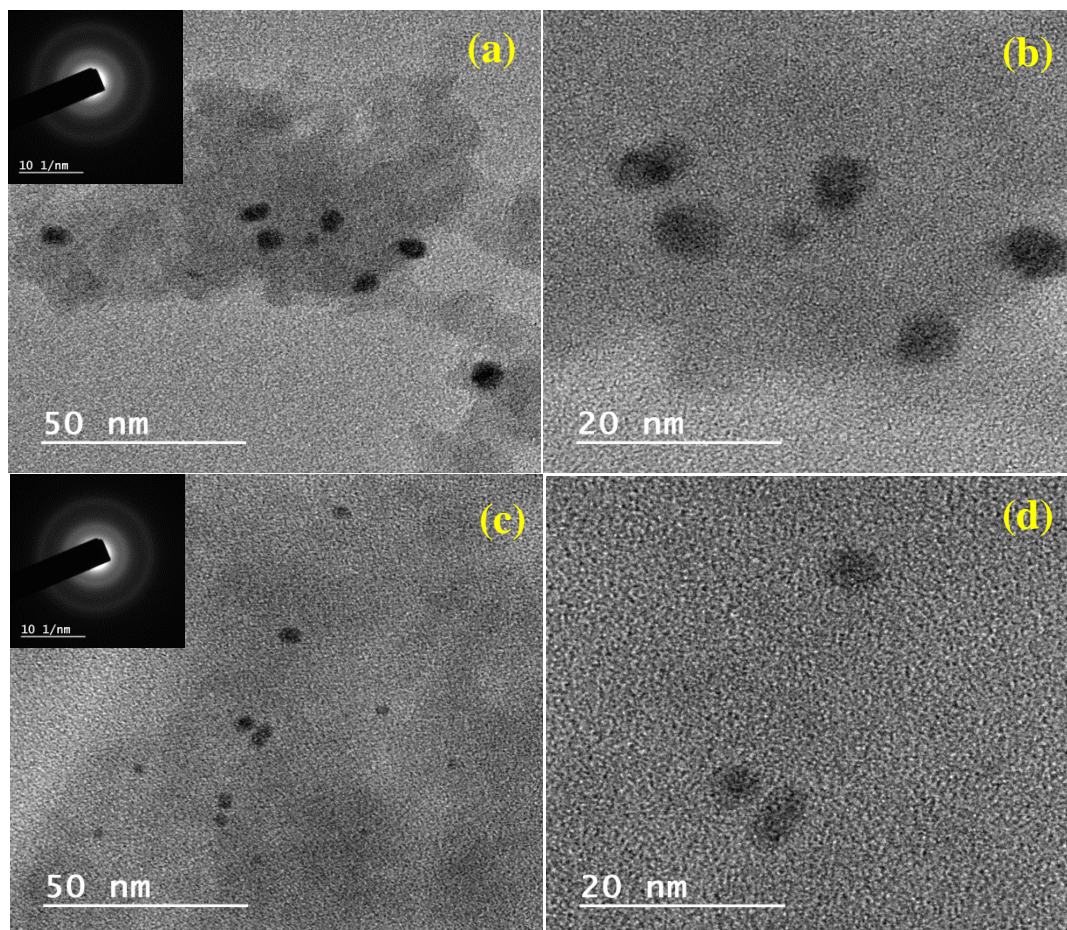


Figure S1: TEM images of as prepared Pd-AP@SiO₂ [(a), (b)] and Pd-DPPE@SiO₂ [(c), (d)] materials with corresponding SAED patterns [insets (a) and (c)]

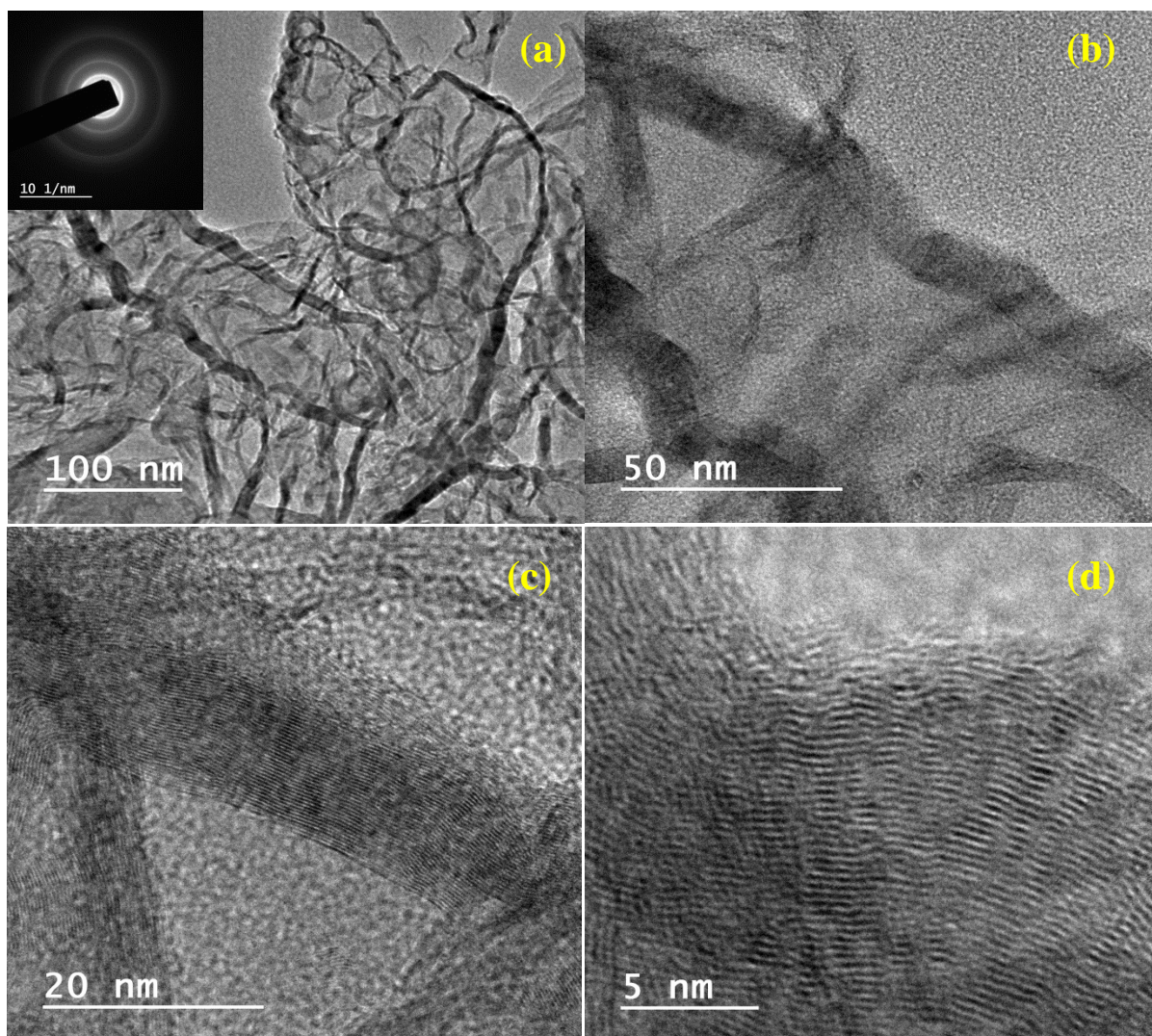


Figure S2: TEM images of the (a) Pd-MP@SiO₂ material with corresponding SAED pattern (inset), HRTEM images (b), (c) and (d) for the material depicting a crystalline structure.

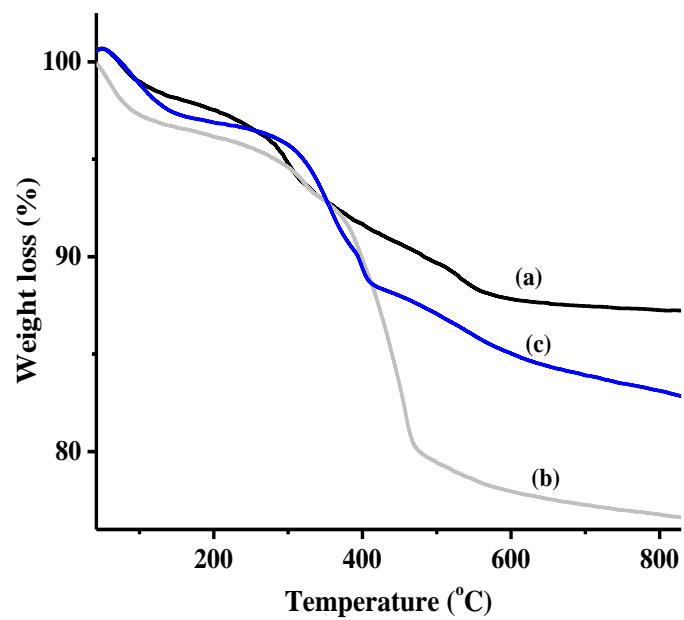


Figure S3: TG analysis of (a) Pd-AP@SiO₂, (b) Pd-DPPE@SiO₂ and (c) Pd-MP@SiO₂ materials

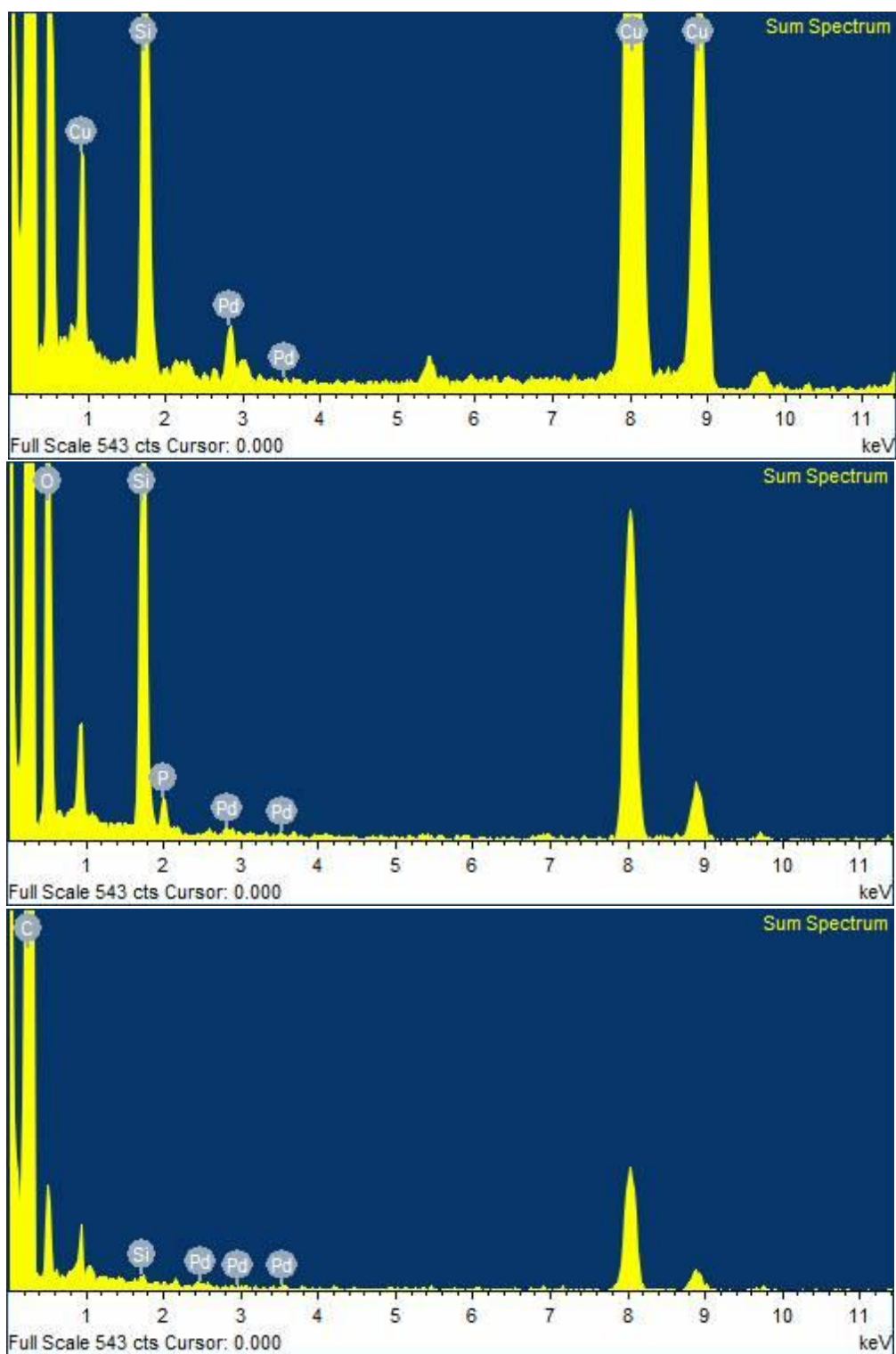


Figure S4: EDAX profiles of (a) Pd-AP@SiO₂, (b) Pd-MP@SiO₂ and (c) Pd-DPPE@SiO₂ materials

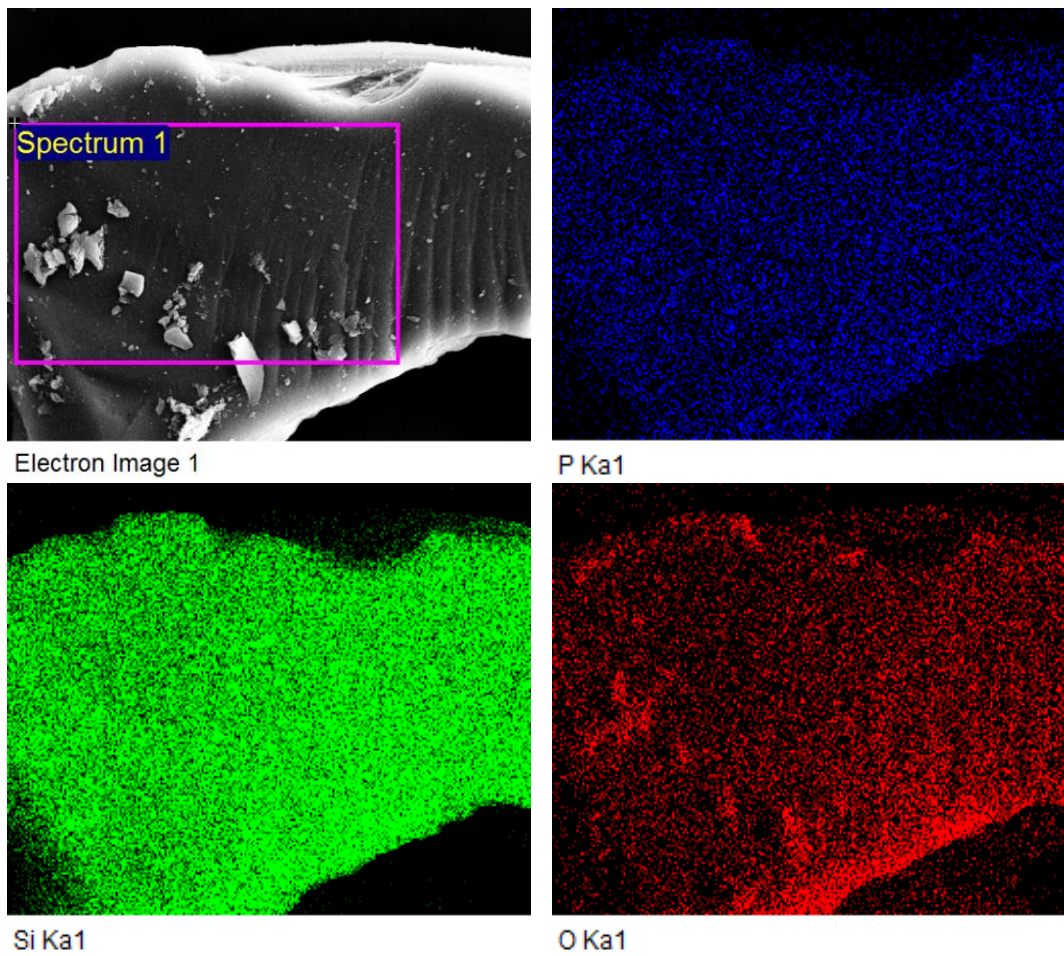


Figure S5: EDS elemental dot mapping images of the Pd-DPPE@SiO₂ material