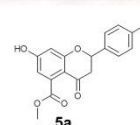
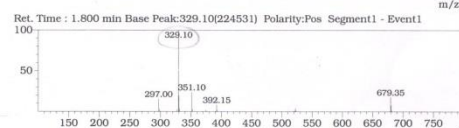
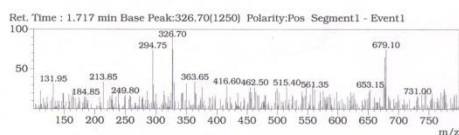
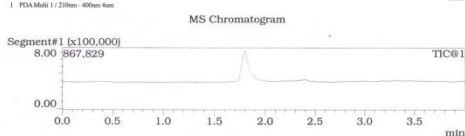
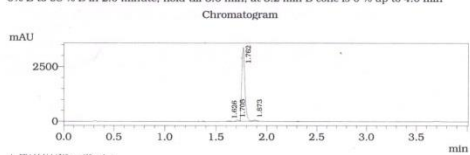


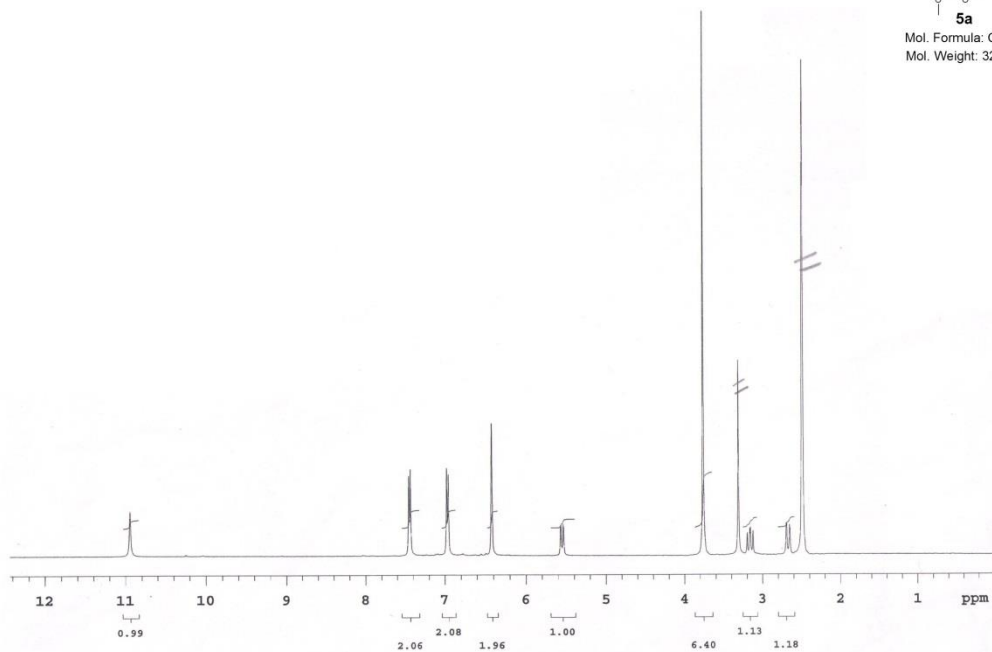
5a
Mol. Formula: C₁₈H₁₆O₆
Mol. Weight: 328.31

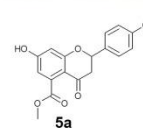
LCMS REPORT

Column : X-Select CSH C18 (3.0*50) mm 2.5μ
Mobile Phase: A: 0.05% Formic acid in water + 5%ACN
B: 0.05% Formic acid in Acetonitrile
Inj Volume: 2.0μL
Flow Rate: 1.2 mL/minute
Gradient program:
0% B to 98% B in 2.0 minute, hold till 3.0 min, at 3.2 min B conc is 0% up to 4.0 min

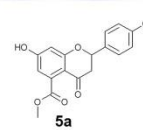
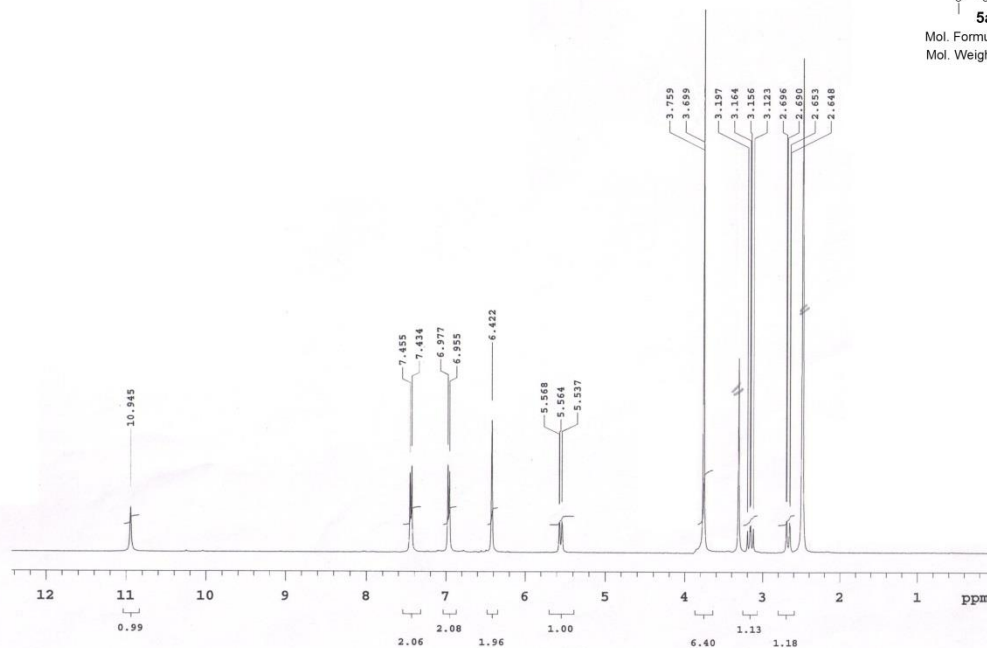


5a
Mol. Formula: C₁₈H₁₆O₆
Mol. Weight: 328.31

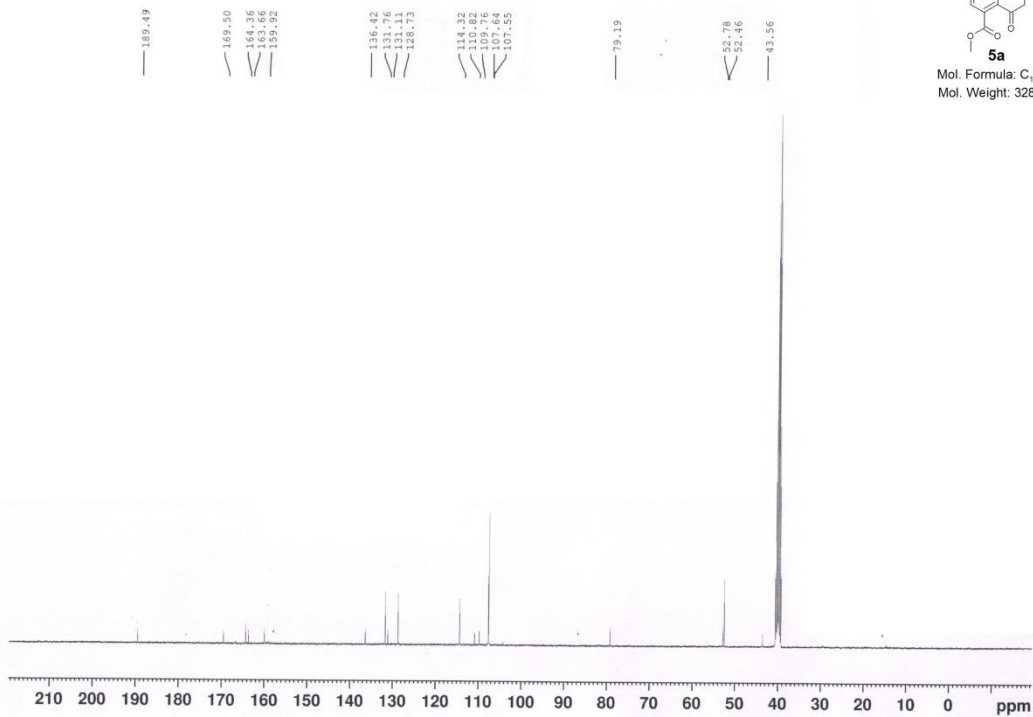


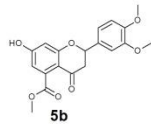


Mol. Formula: C₁₈H₁₆O₆
 Mol. Weight: 328.31



Mol. Formula: C₁₈H₁₆O₆
 Mol. Weight: 328.31

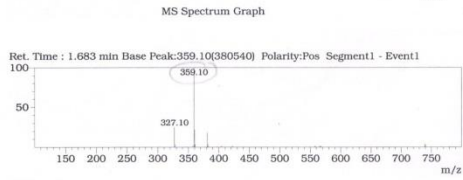
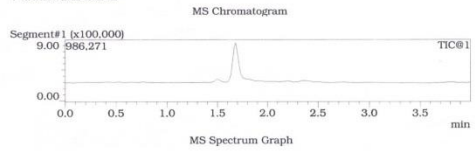
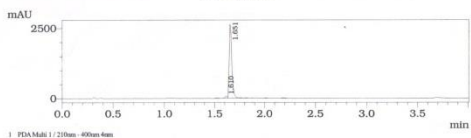




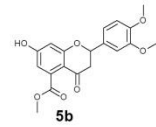
Mol. Formula: C₁₉H₁₆O₇
Mol. Weight: 358.34

LCMS REPORT

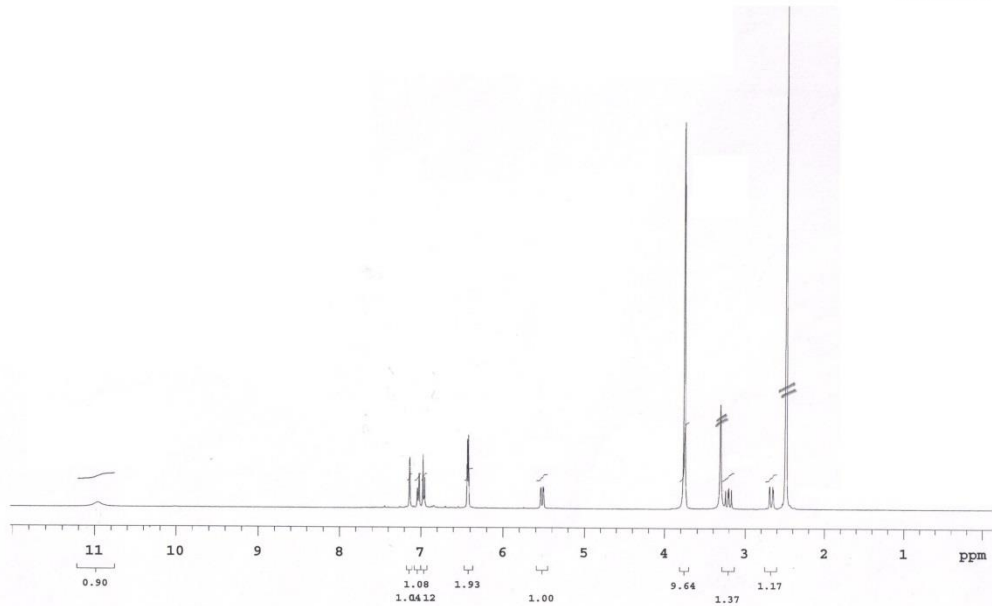
Column: X-Select CSH C18 (3.0*50) mm 2.5μ
Mobile Phase: A: 0.05% Formic acid in water + 5%ACN
B: 0.05% Formic acid in Acetonitrile
Inj Volume: 2.0μL
Flow Rate: 1.2 mL/minute
Gradient program:
0% B to 98 % B in 2.0 minute, hold till 3.0 min, at 3.2 min B conc is 0 % up to 4.0 min

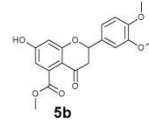


Ret. Time : 1.683 min Base Peak:359.10(380540) Polarity:Pos Segment1 - Event1

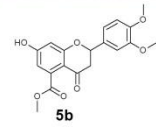
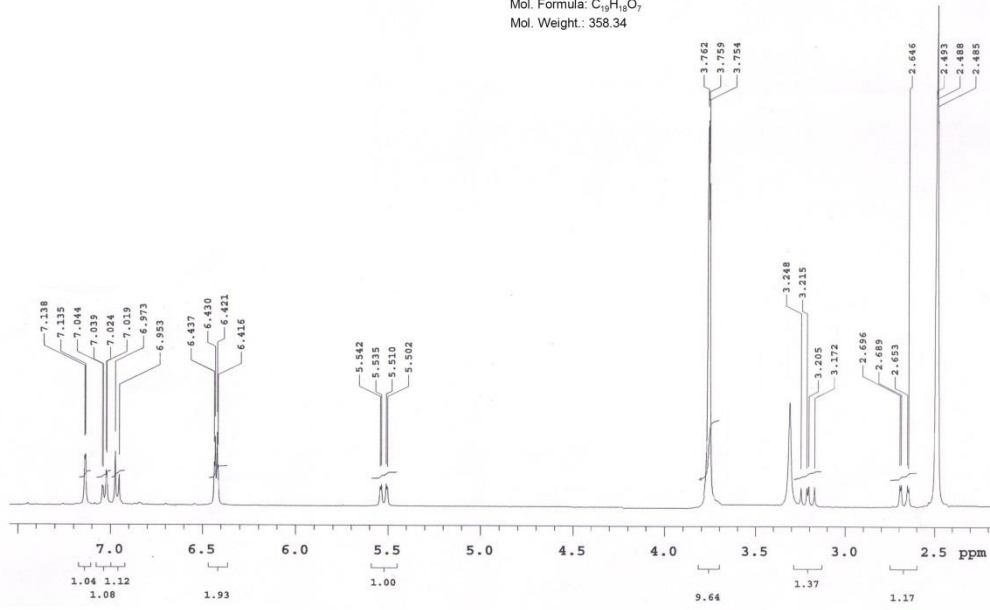


Mol. Formula: C₁₉H₁₆O₇
Mol. Weight: 358.34

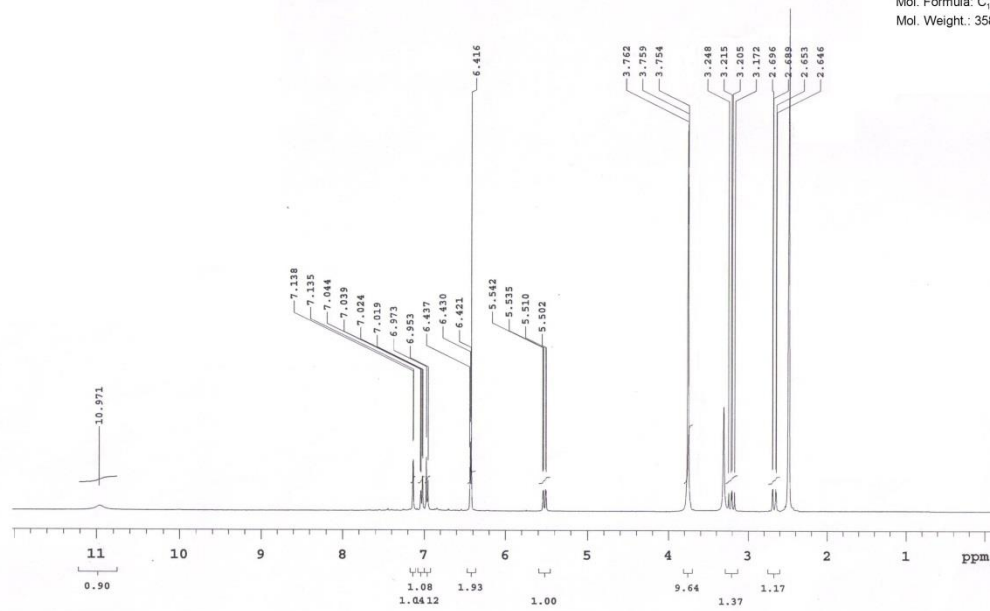


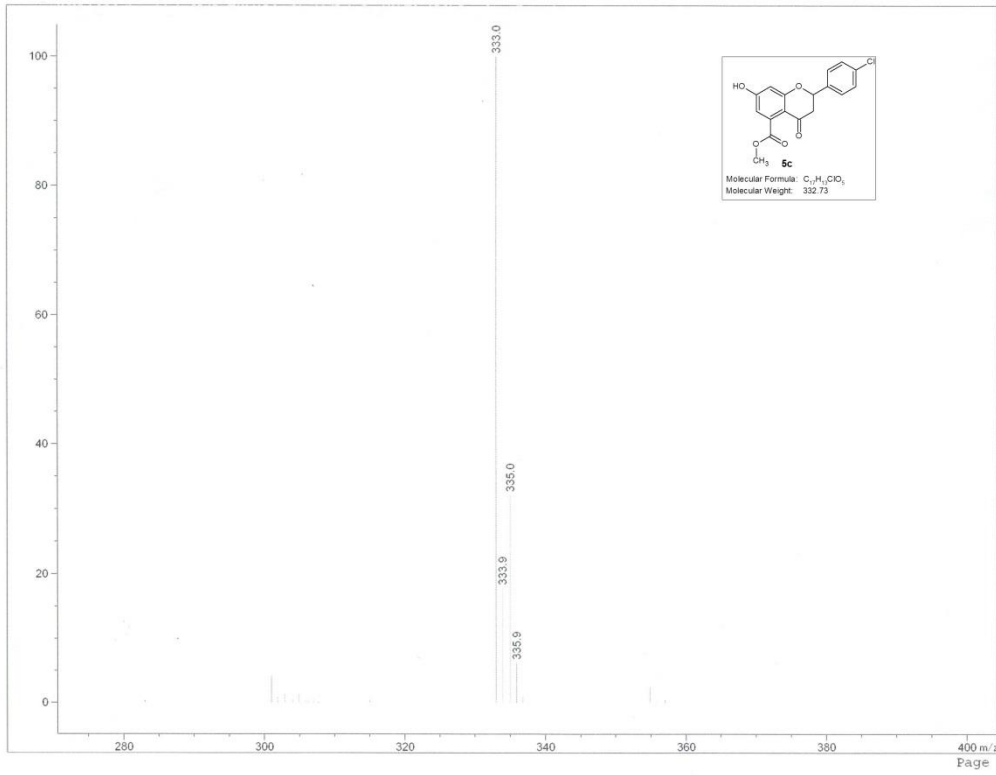
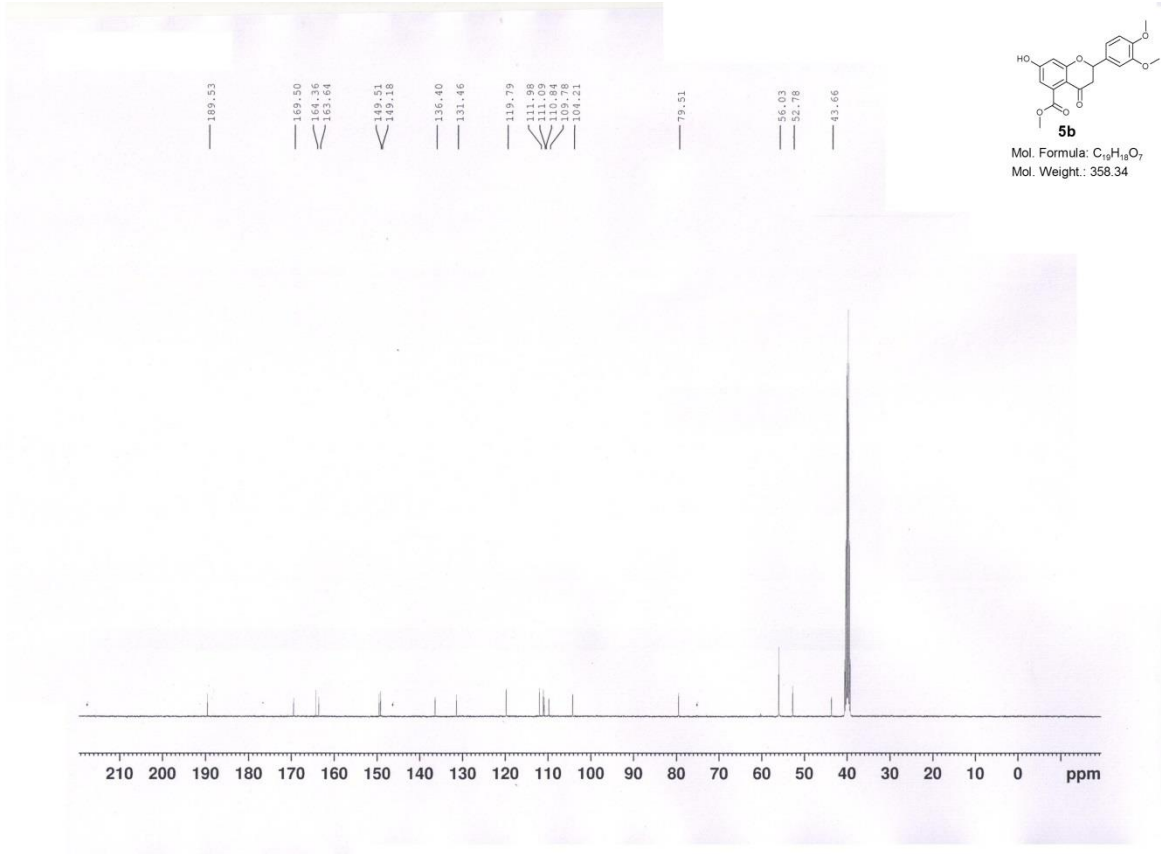


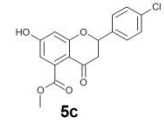
Mol. Formula: C₁₉H₁₈O₇
 Mol. Weight: 358.34



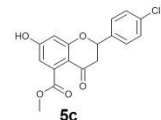
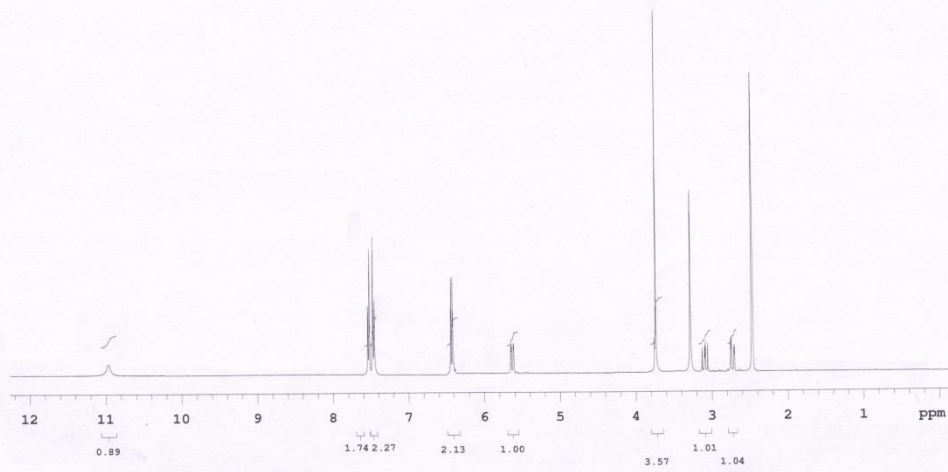
Mol. Formula: C₁₉H₁₈O₇
 Mol. Weight: 358.34



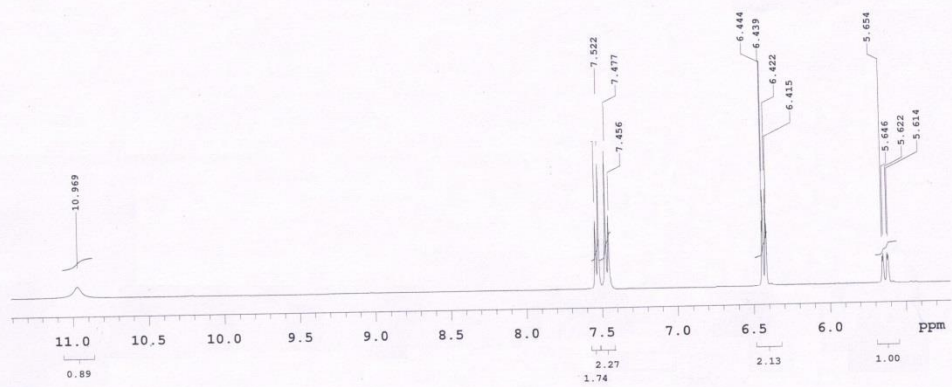


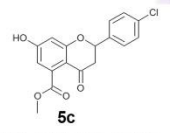


Mol. Formula: C₁₇H₁₃ClO₅
Mol. Weight: 332.73

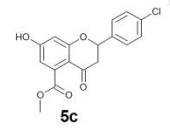
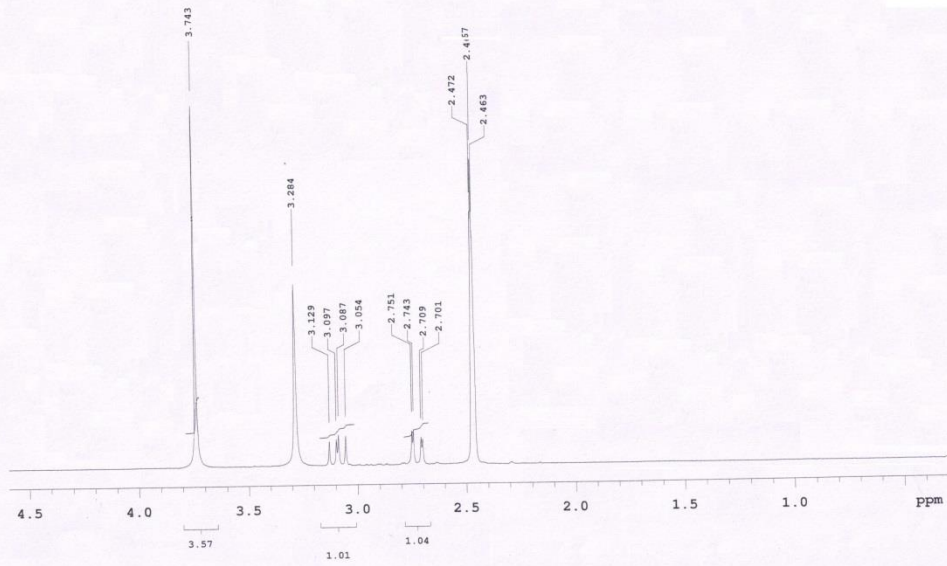


Mol. Formula: C₁₇H₁₃ClO₅
Mol. Weight: 332.73

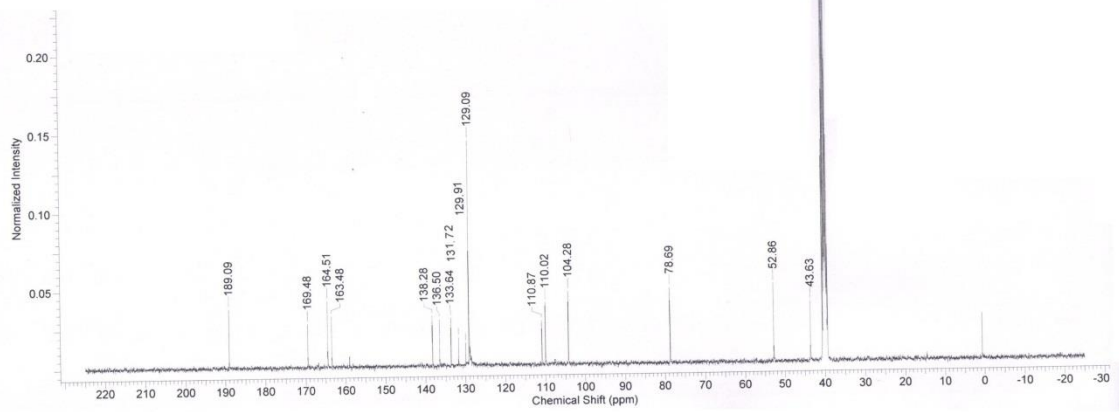




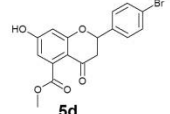
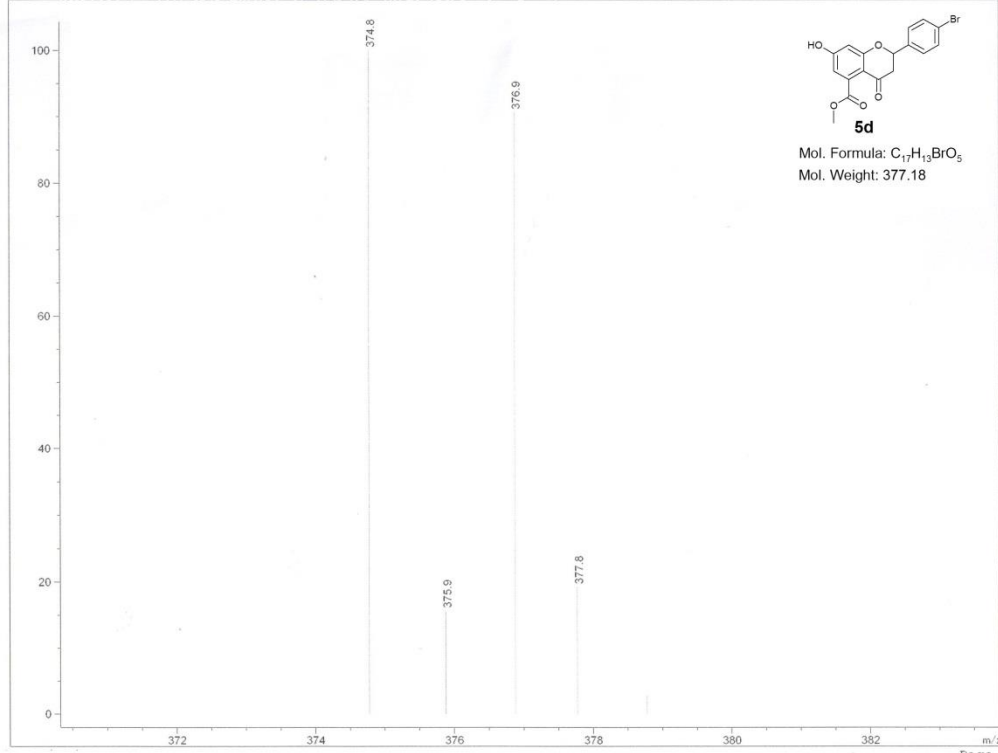
Mol. Formula: $C_{17}H_{13}ClO_5$
 Mol. Weight: 332.73



Mol. Formula: $C_{17}H_{13}ClO_5$
 Mol. Weight: 332.73

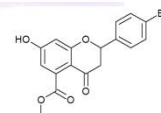


MS Spectrum



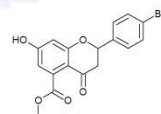
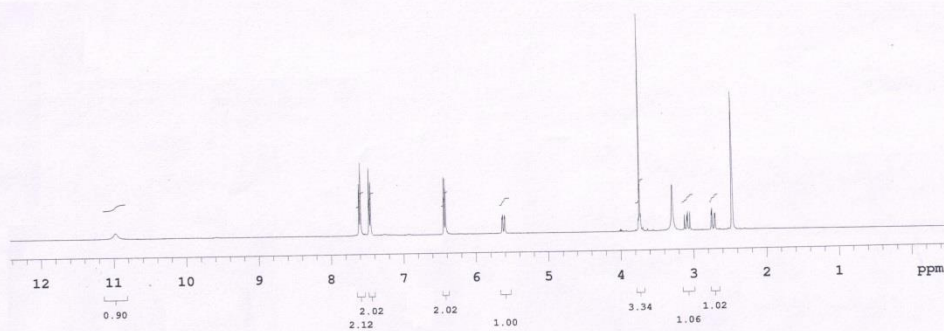
5d

Mol. Formula: C₁₇H₁₃BrO₅
Mol. Weight: 377.18



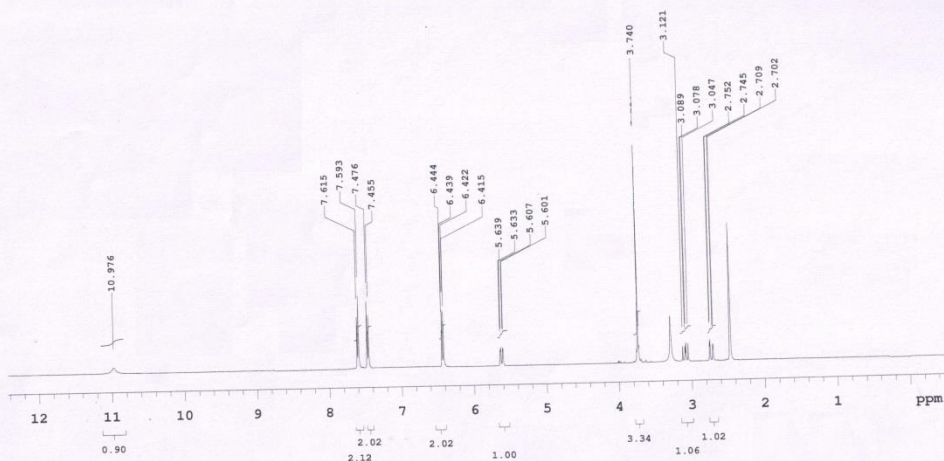
5d

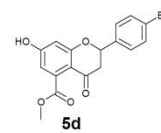
Mol. Formula: C₁₇H₁₃BrO₅
Mol. Weight: 377.18



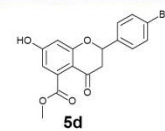
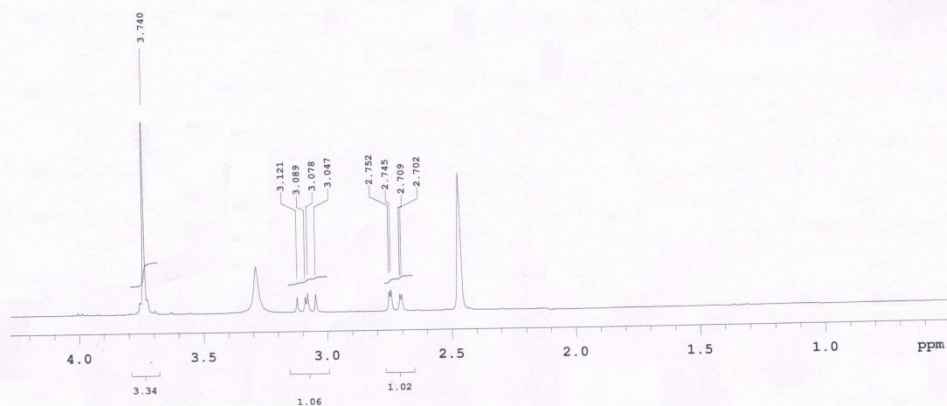
5d

Mol. Formula: C₁₇H₁₃BrO₅
Mol. Weight: 377.18

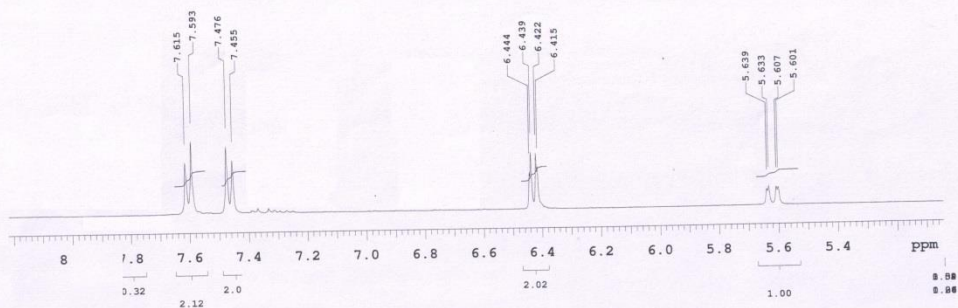


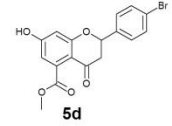


Mol. Formula: C₁₇H₁₃BrO₃
Mol. Weight: 377.18

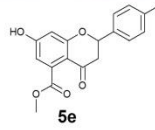
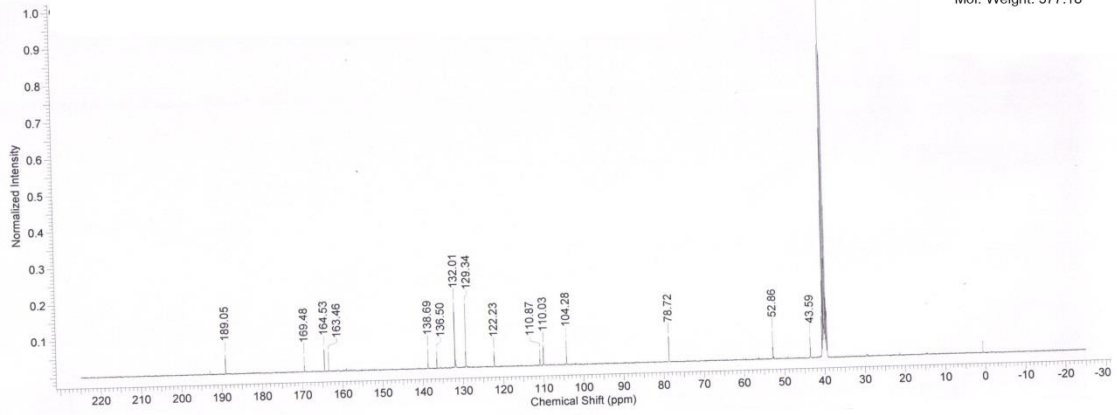


Mol. Formula: C₁₇H₁₃BrO₃
Mol. Weight: 377.18





Mol. Formula: $C_{17}H_{13}BrO_5$
 Mol. Weight: 377.18

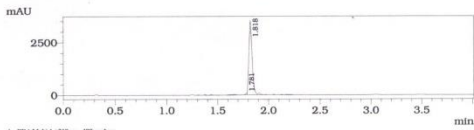


Mol. Formula: $C_{18}H_{16}O_5$
 Mol. Weight: 312.31

LCMS REPORT

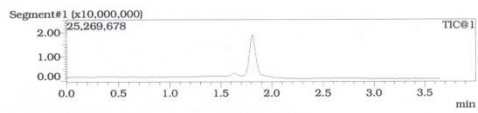
Column : X-Select CSH (3.0*50) mm 2.5u
 Mobile Phase: A: 0.05% Formic acid in water+5%ACN
 B: 0.05% Formic acid in ACN
 Inj Volume: 2.0ul
 Flow Rate: 1.5, mL/minute
 Gradient program:
 0% B to 98 % B in 2.0 minute, Hold till 3.0 min. At 3.2 min B conc is 0 % up to 4.0 min

Chromatogram

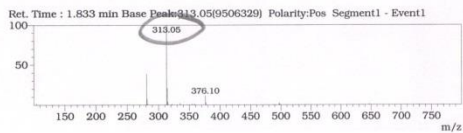


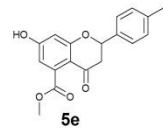
1 FIA Multi 1 / 210mm - 400nm 4nm

MS Chromatogram

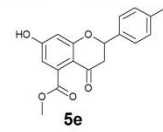
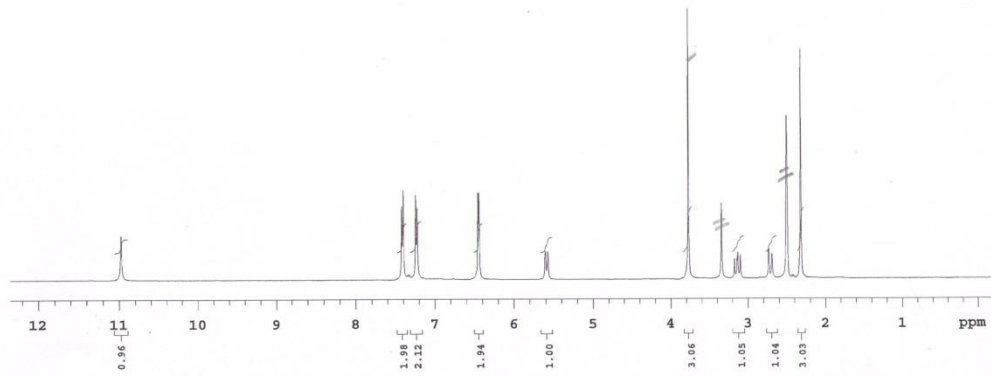


MS Spectrum Graph

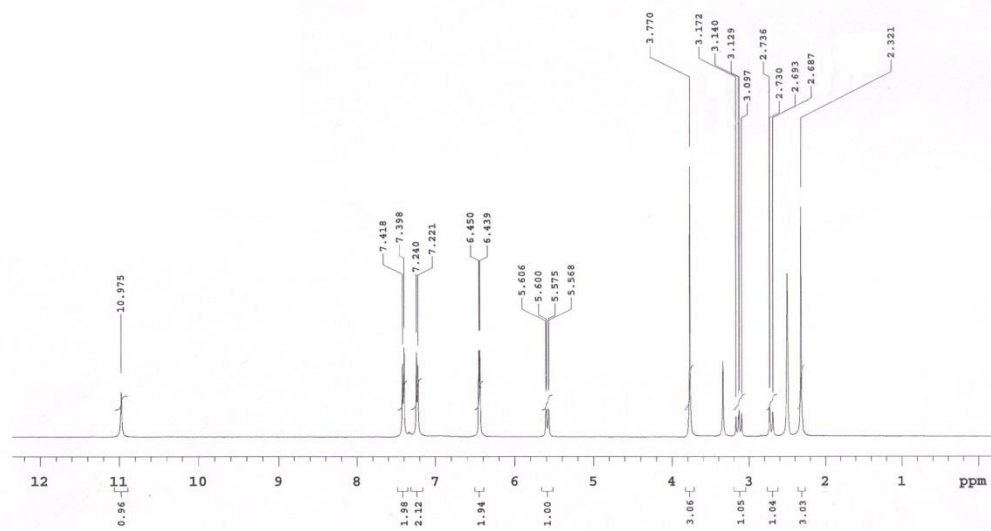


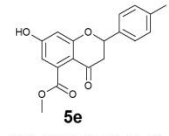


Mol. Formula: $C_{18}H_{16}O_5$
 Mol. Weight: 312.31

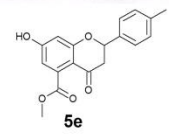
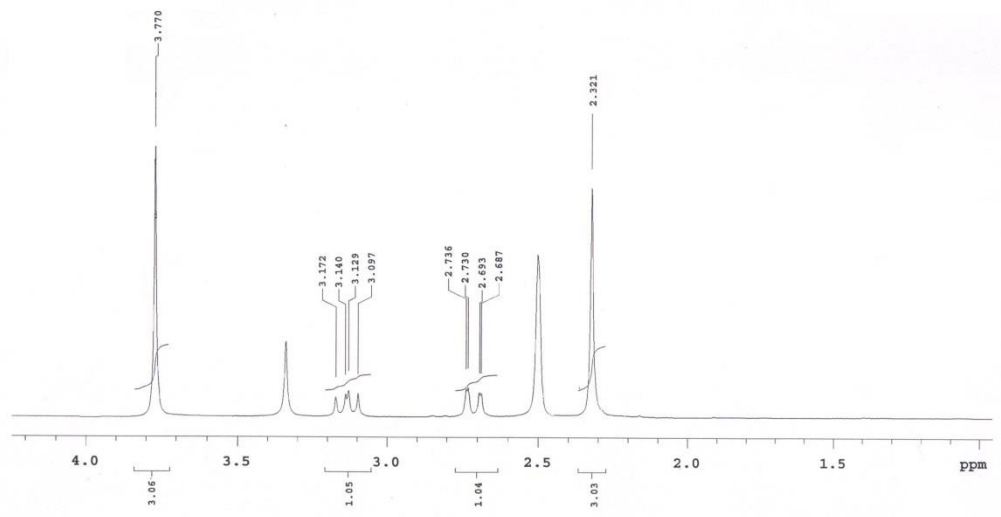


Mol. Formula: $C_{18}H_{16}O_5$
 Mol. Weight: 312.31

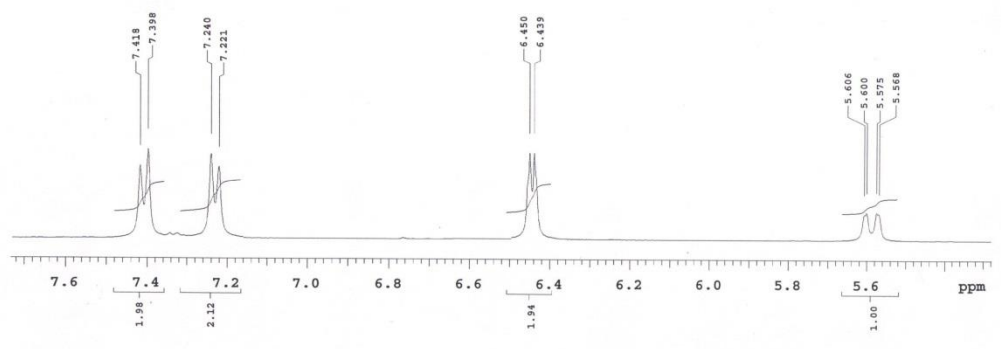


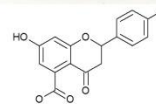


Mol. Formula: C₁₈H₁₆O₅
Mol. Weight: 312.31



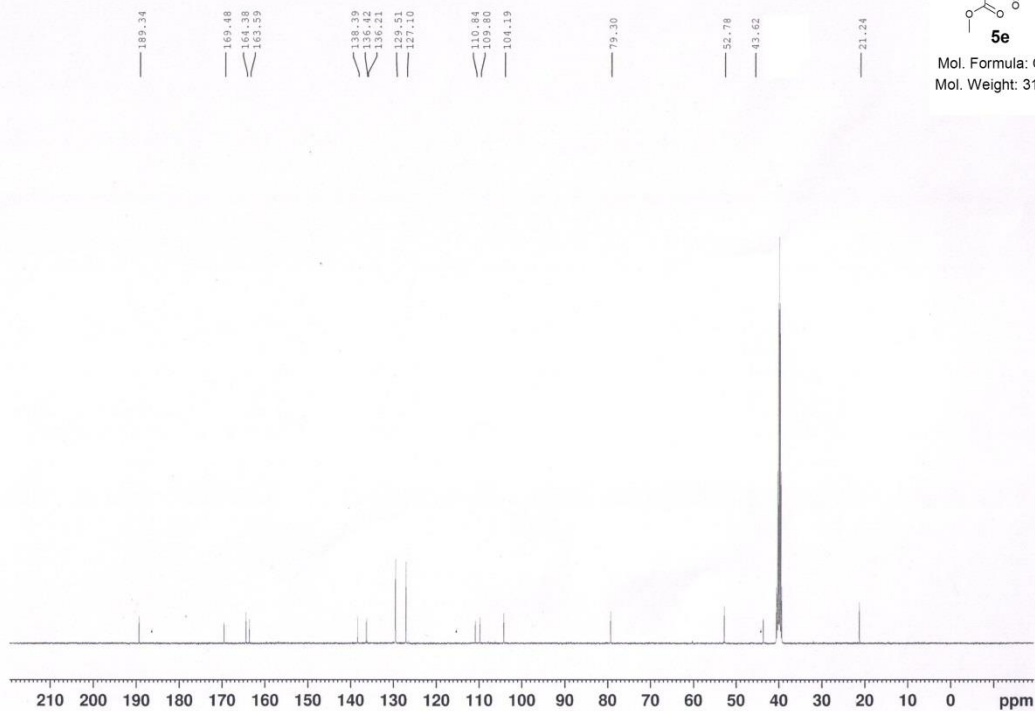
Mol. Formula: C₁₈H₁₆O₅
Mol. Weight: 312.31

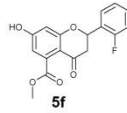




5e

Mol. Formula: $C_{18}H_{16}O_5$
Mol. Weight: 312.31

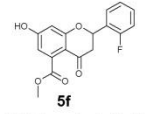
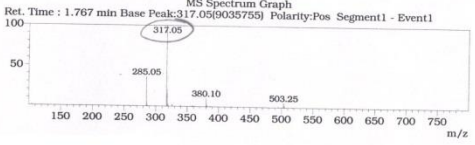
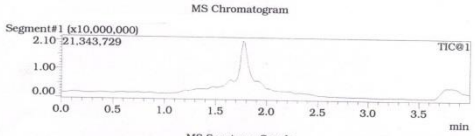
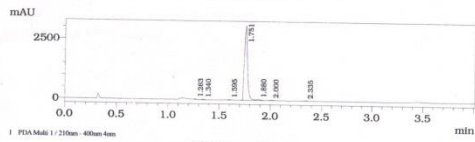




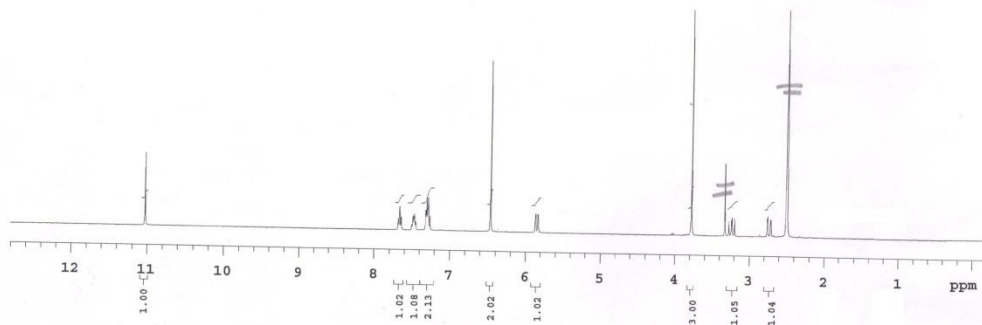
Mol. Formula: C₁₇H₁₃FO₃
 Mol. Weight: 316.28

LCMS REPORT

Column : X-Select CSH (3.0*50) mm 2.5μ
 Mobile Phase: A: 0.05% Formic acid in water+5%ACN
 B: 0.05% Formic acid in ACN
 Inj Volume: 2.0 μL
 Flow Rate: 1.5 mL/minute
 Gradient program:
 0% B to 98 % B in 2.0 minute. Hold till 3.0 min. At 3.2 min B conc is 0 % up to 4.0 min

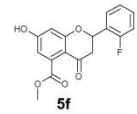
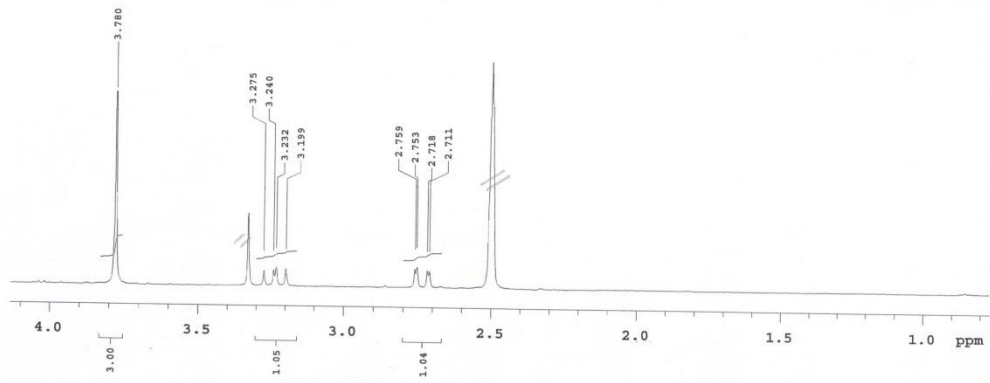


Mol. Formula: C₁₇H₁₃FO₃
 Mol. Weight: 316.28

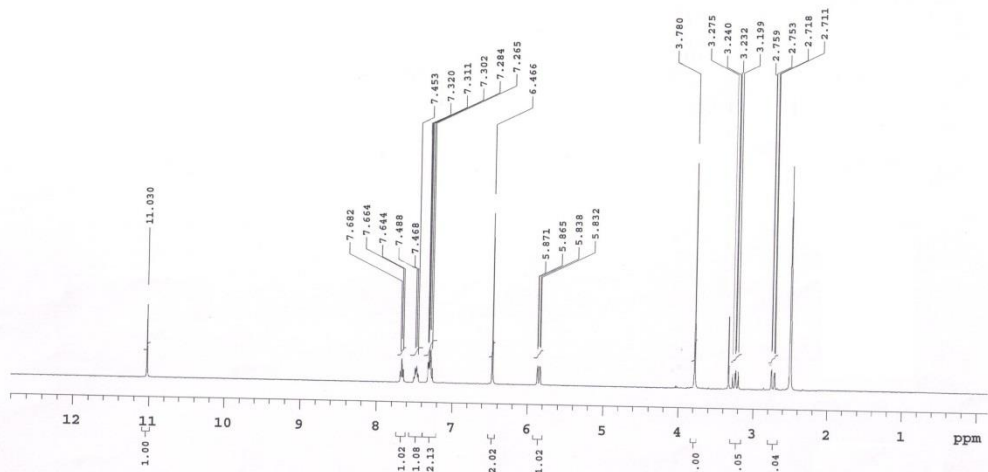


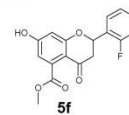


Mol. Formula: C₁₇H₁₃FO₅
 Mol. Weight: 316.28



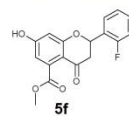
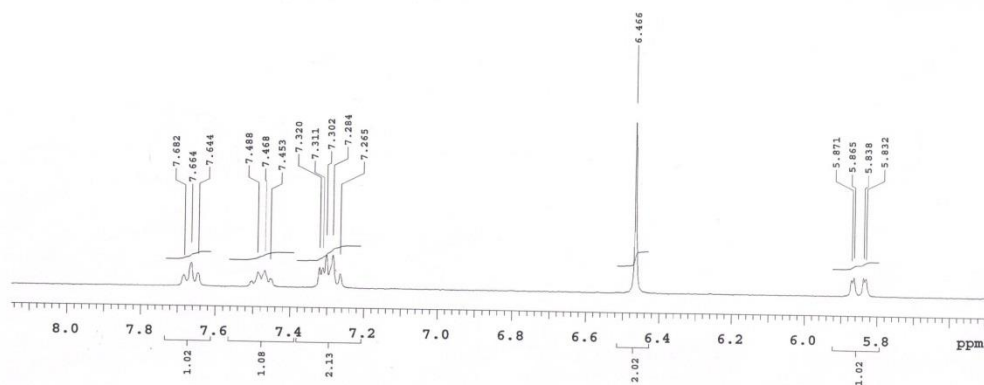
Mol. Formula: C₁₇H₁₃FO₅
 Mol. Weight: 316.28





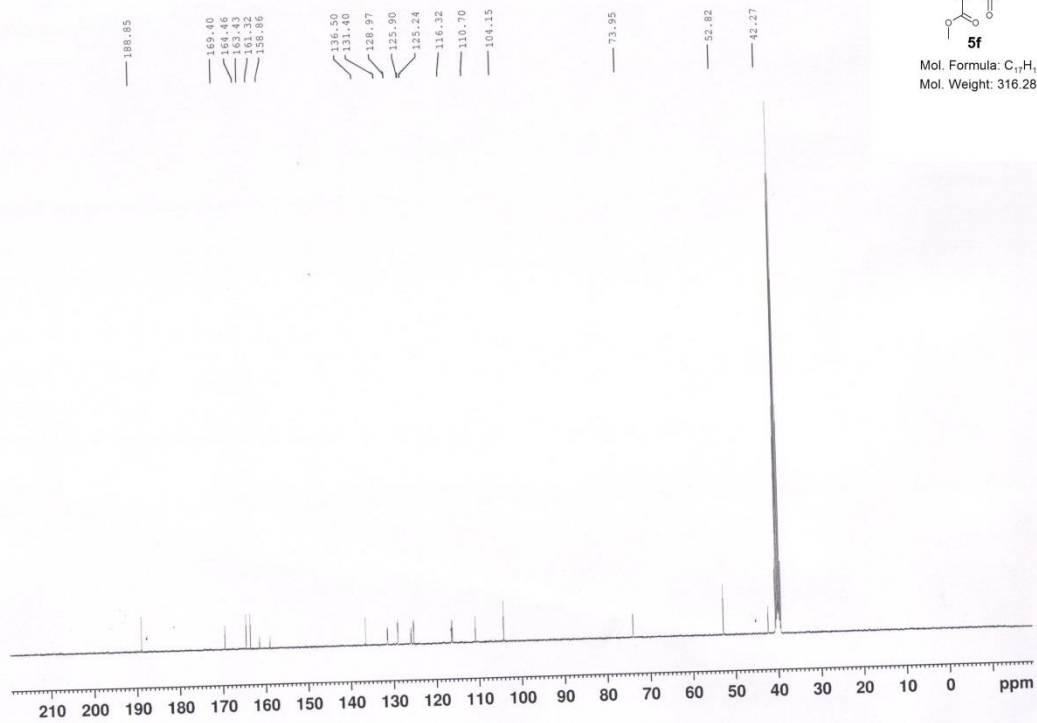
5f

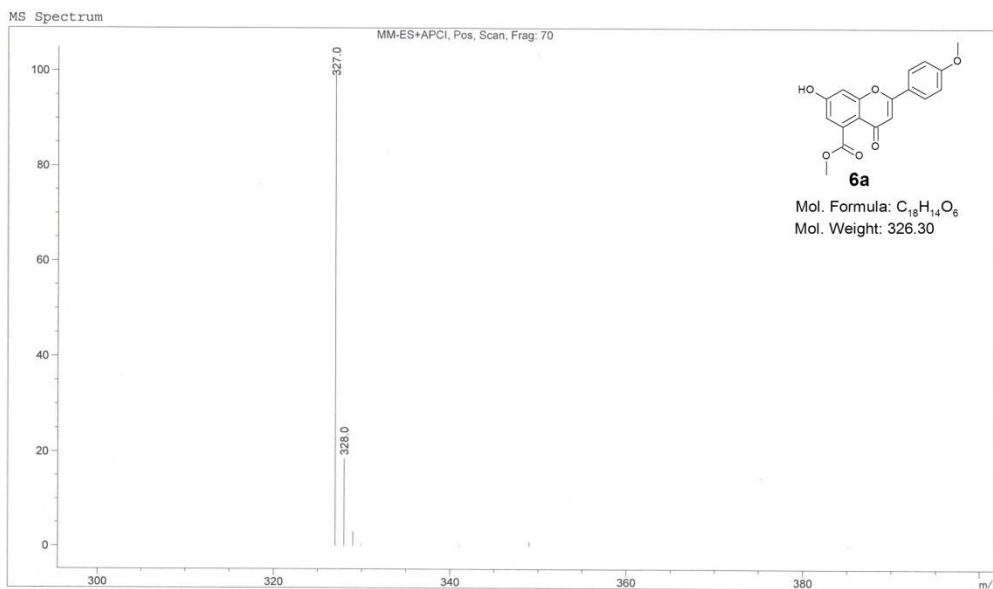
Mol. Formula: C₁₇H₁₃FO₃
Mol. Weight: 316.28



5f

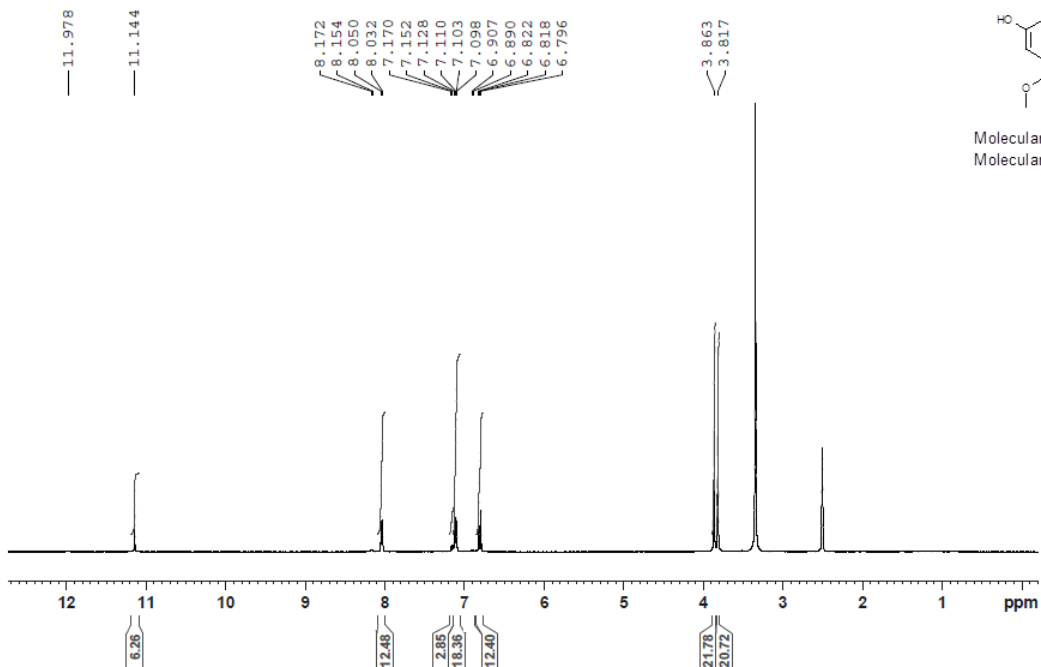
Mol. Formula: C₁₇H₁₃FO₃
Mol. Weight: 316.28

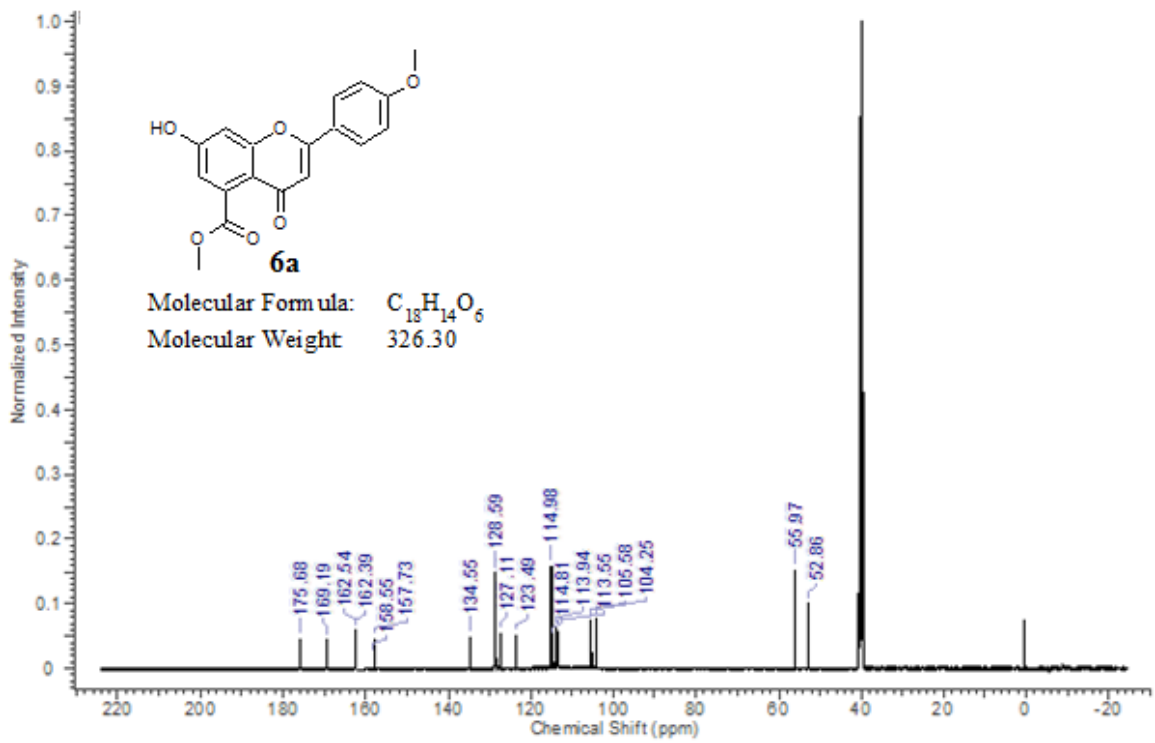
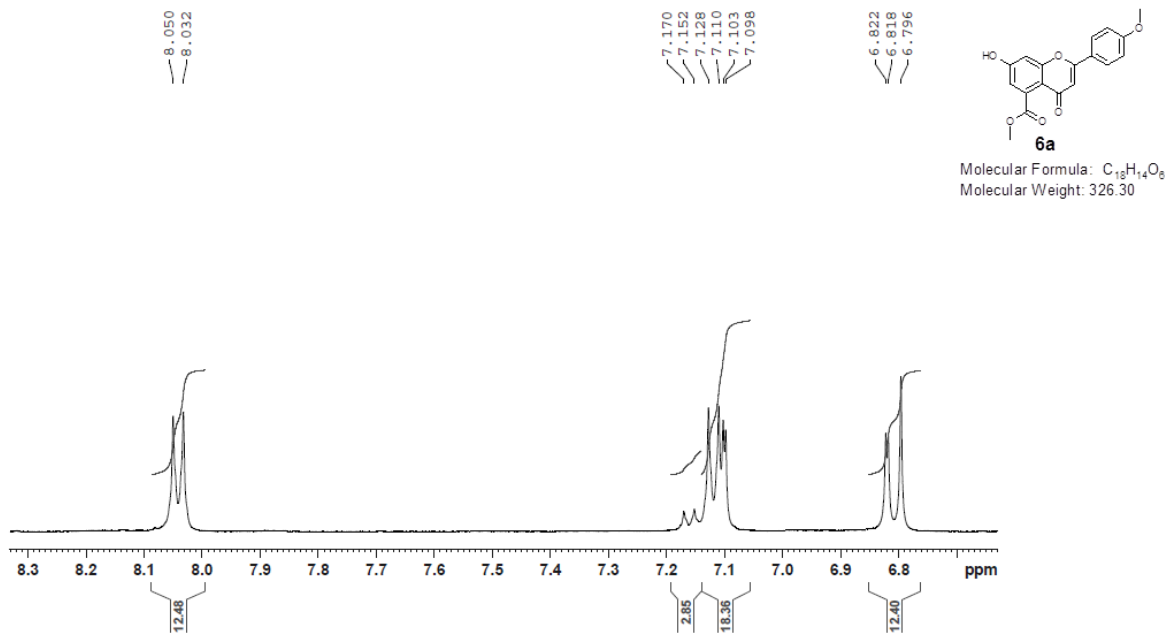


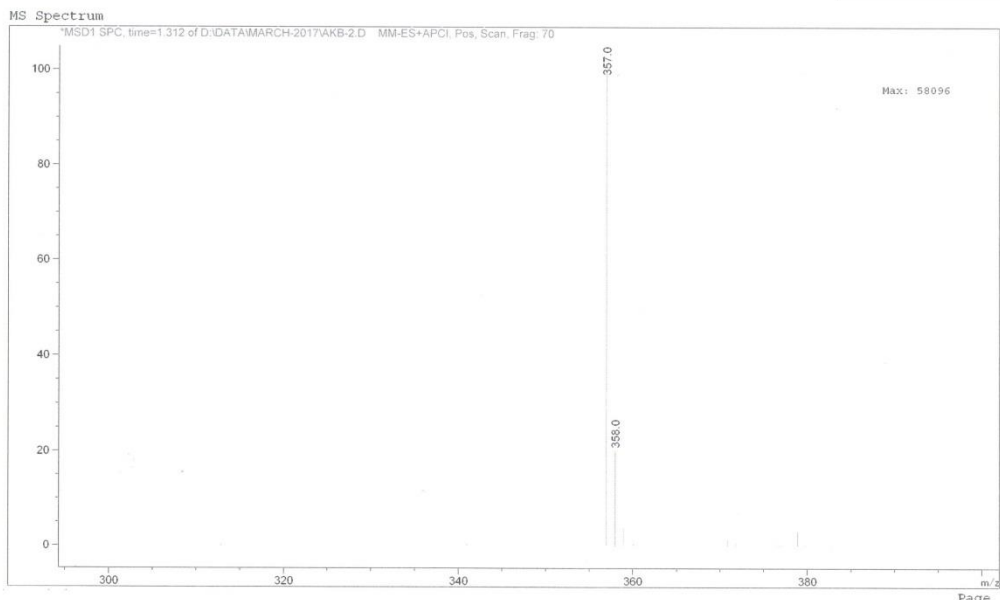
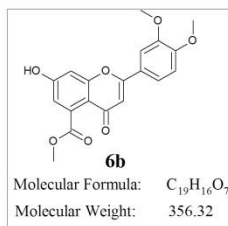


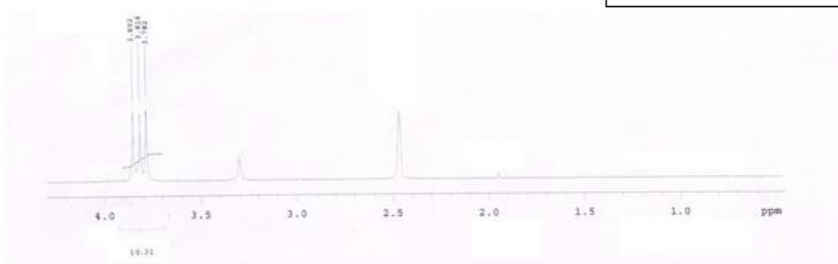
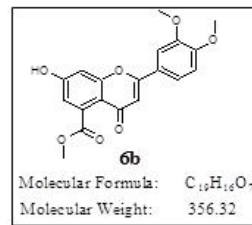
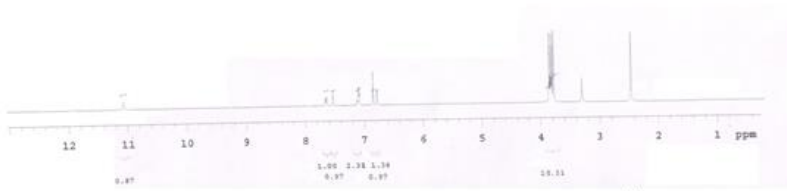
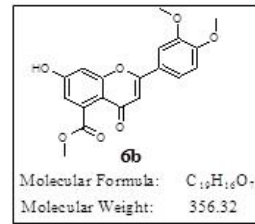
Page 1 of 1

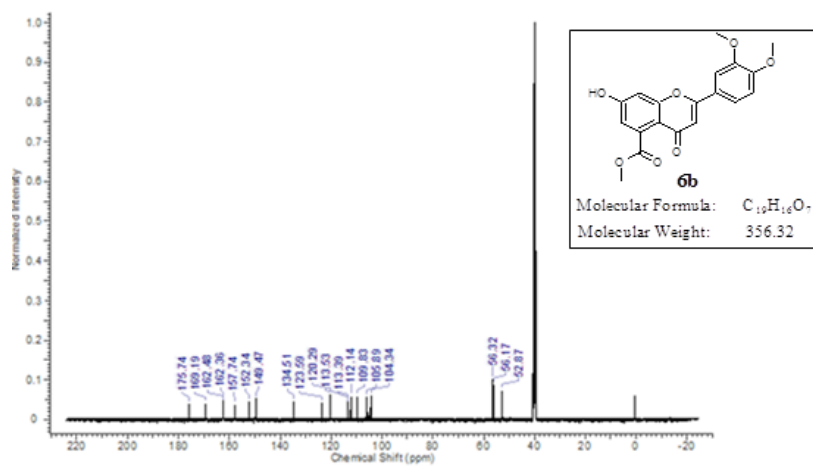
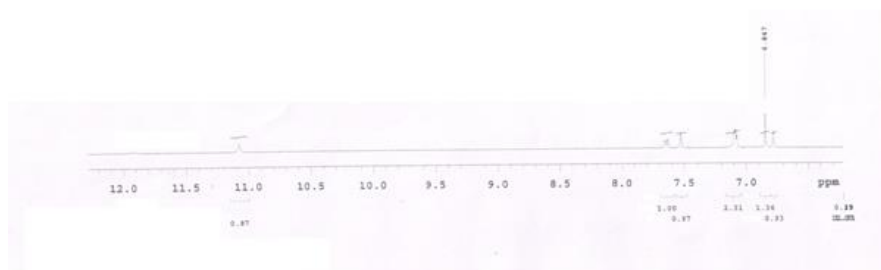
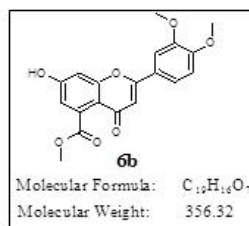
ARI-14
PROTON_DepttChem DMSO {D:\AGARKAR} CIF 30

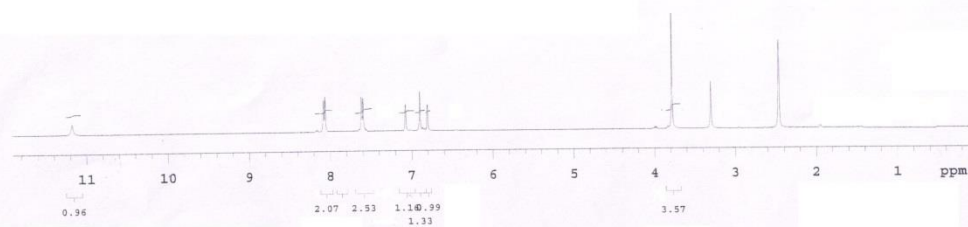
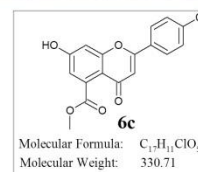
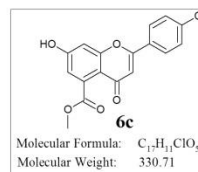
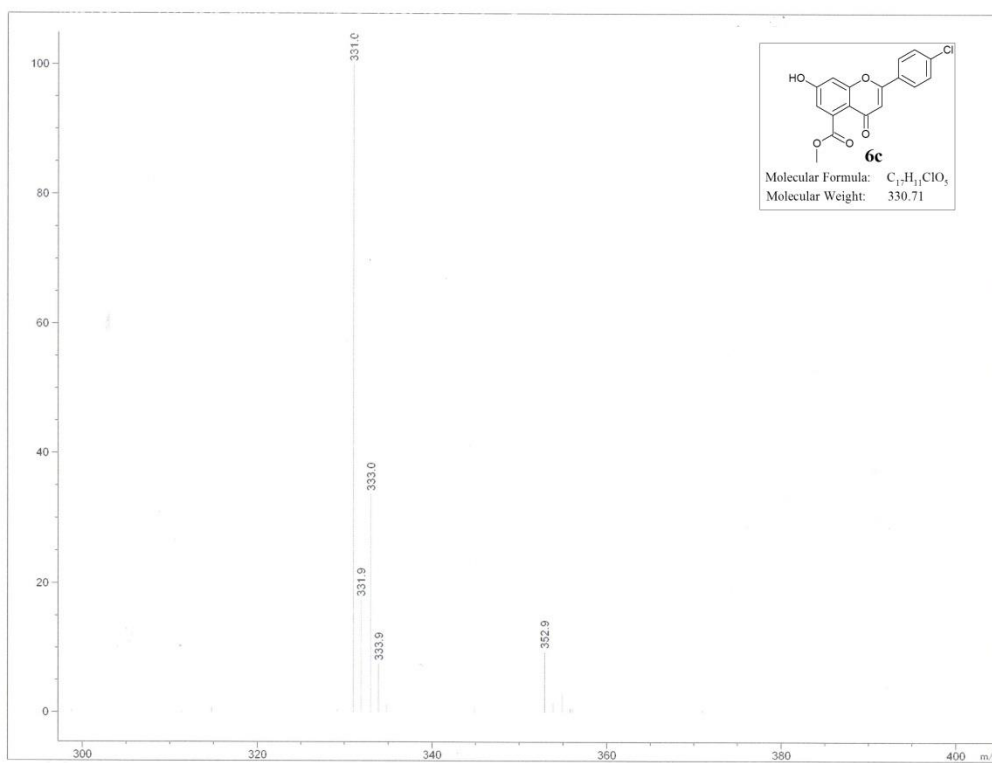


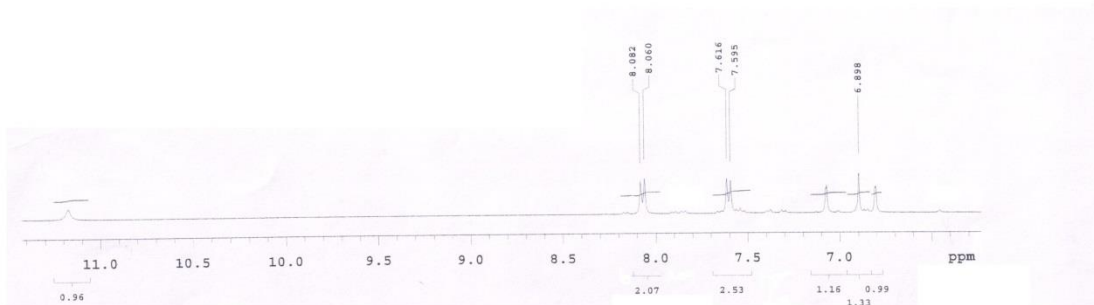
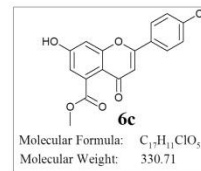
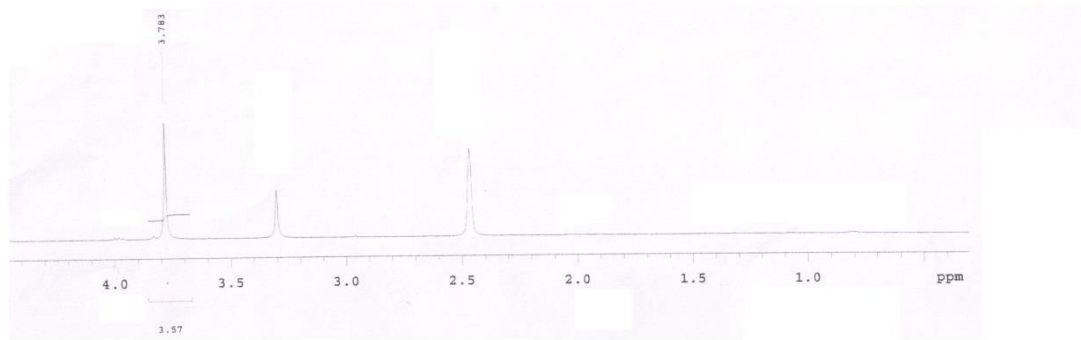
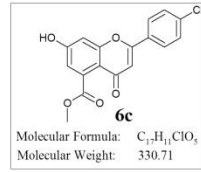


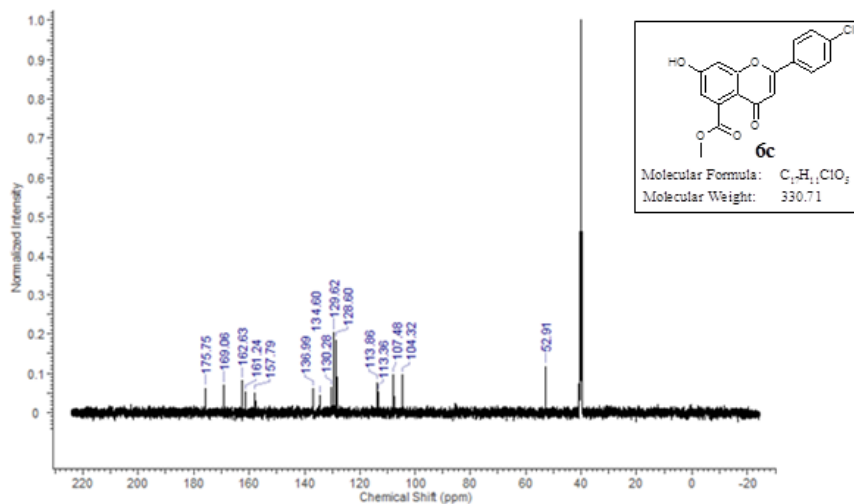


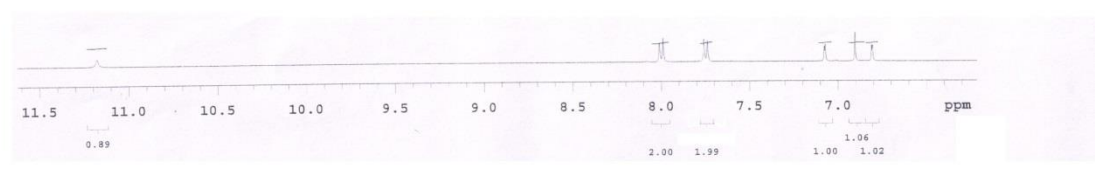
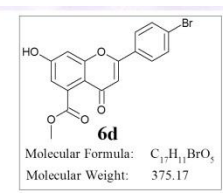
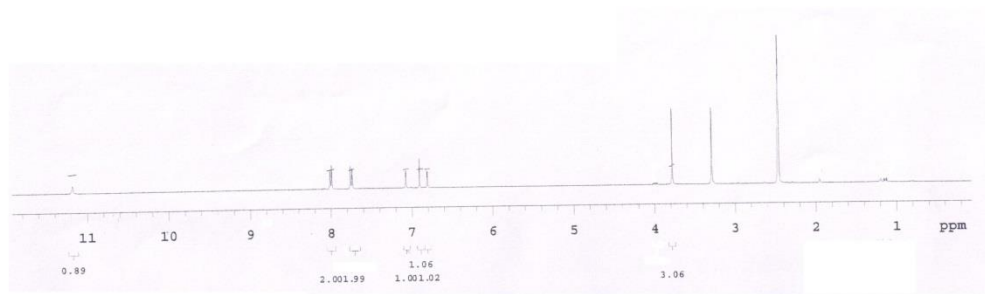
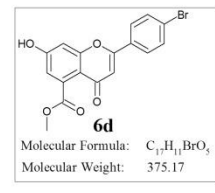


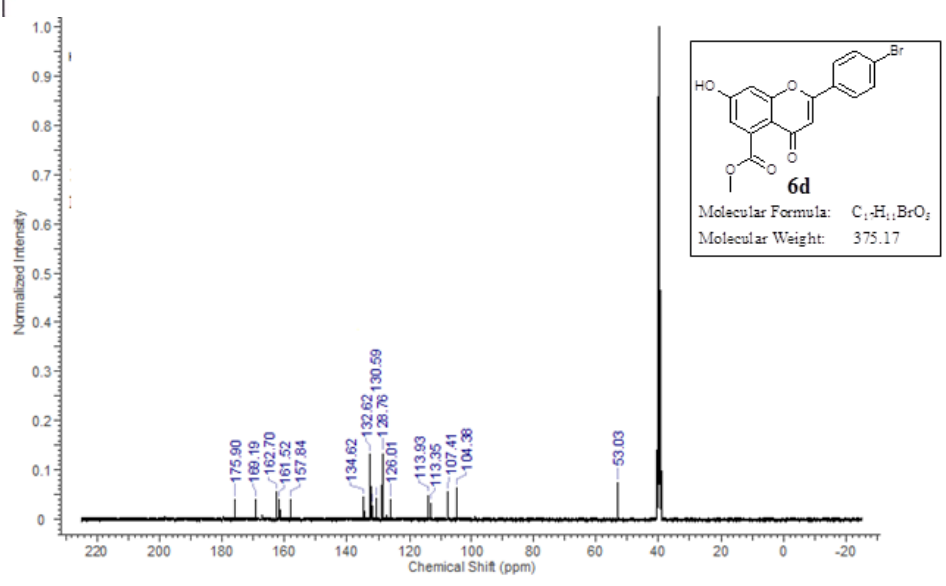
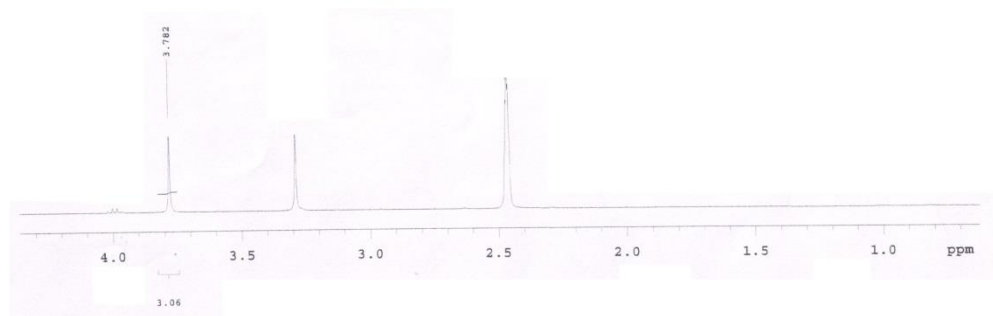
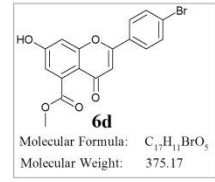


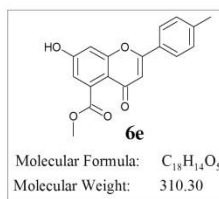
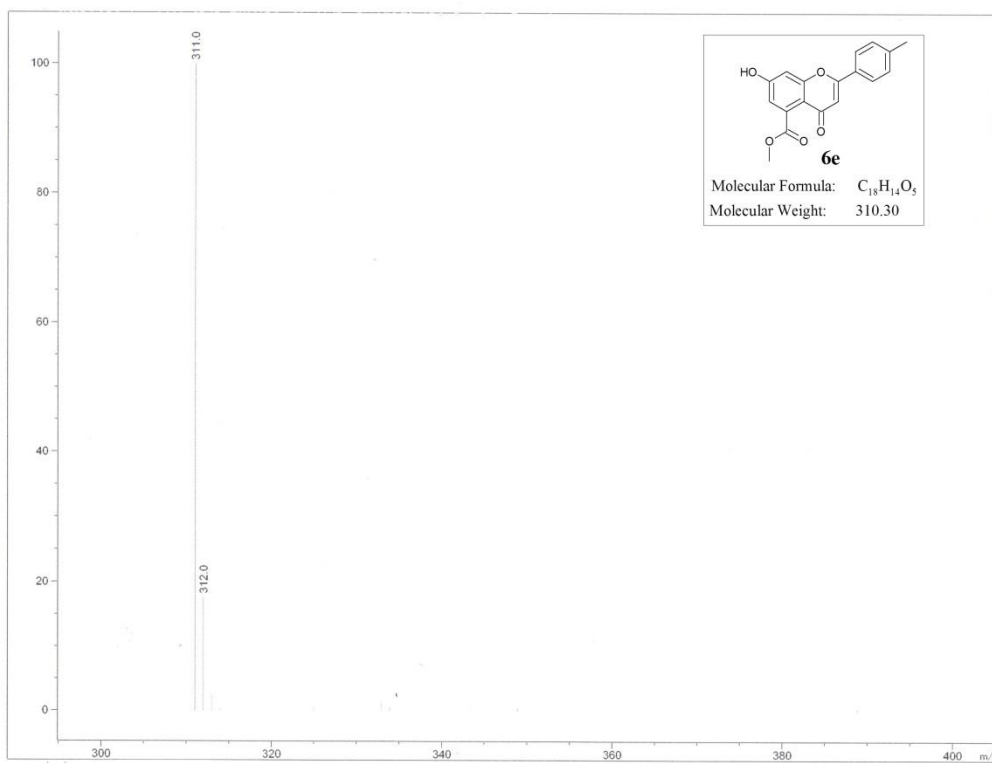


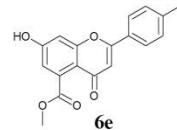




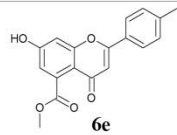
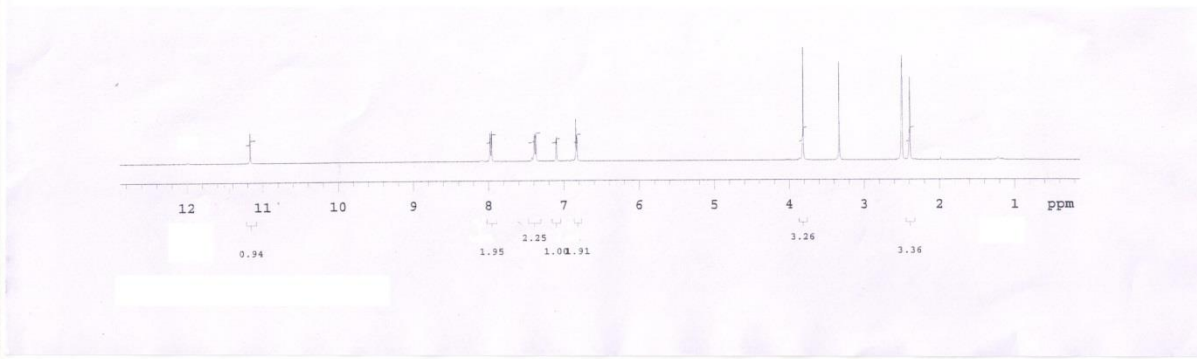




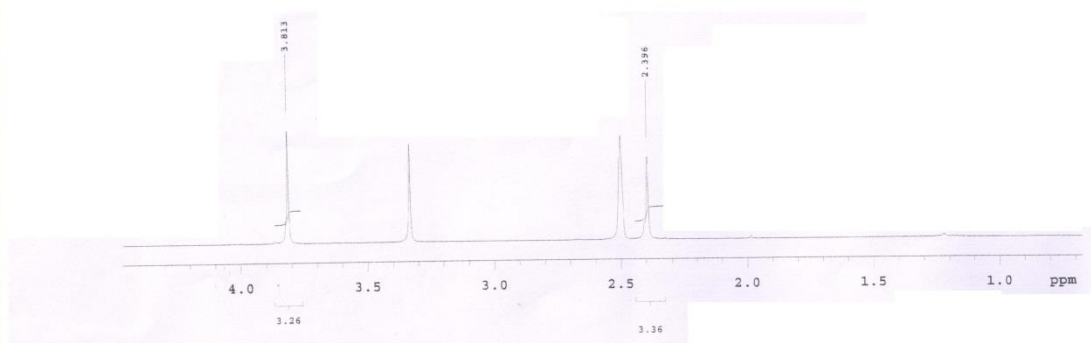


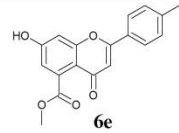


Molecular Formula: $C_{18}H_{14}O_5$
Molecular Weight: 310.30

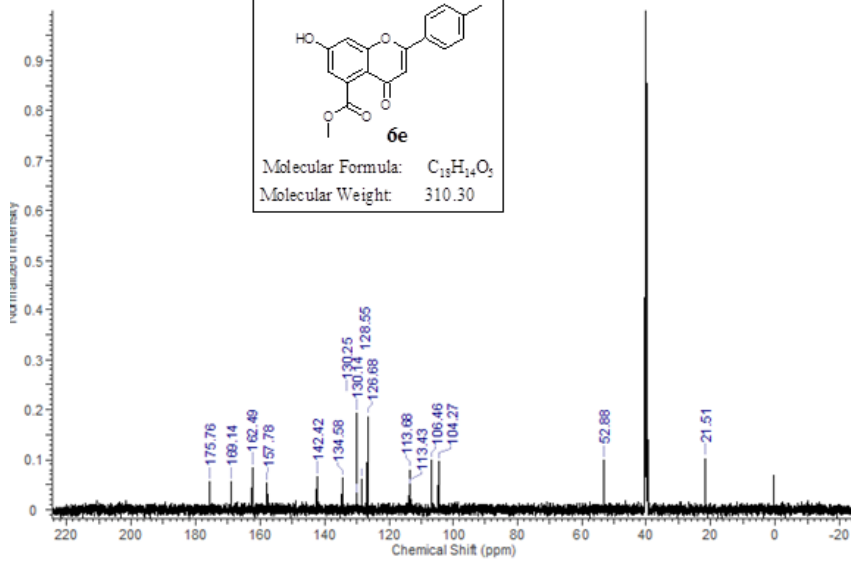
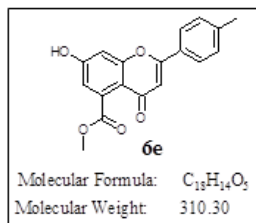
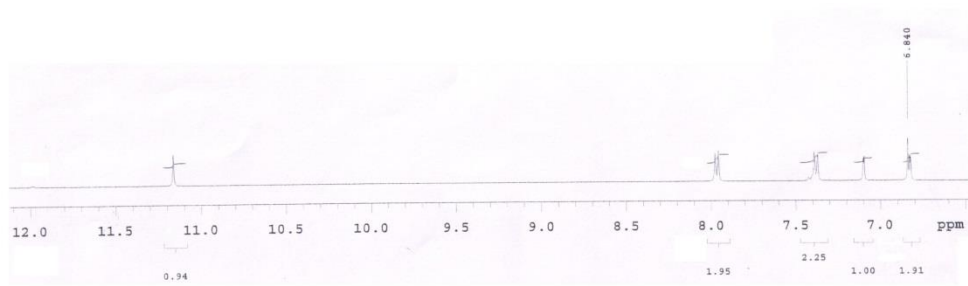


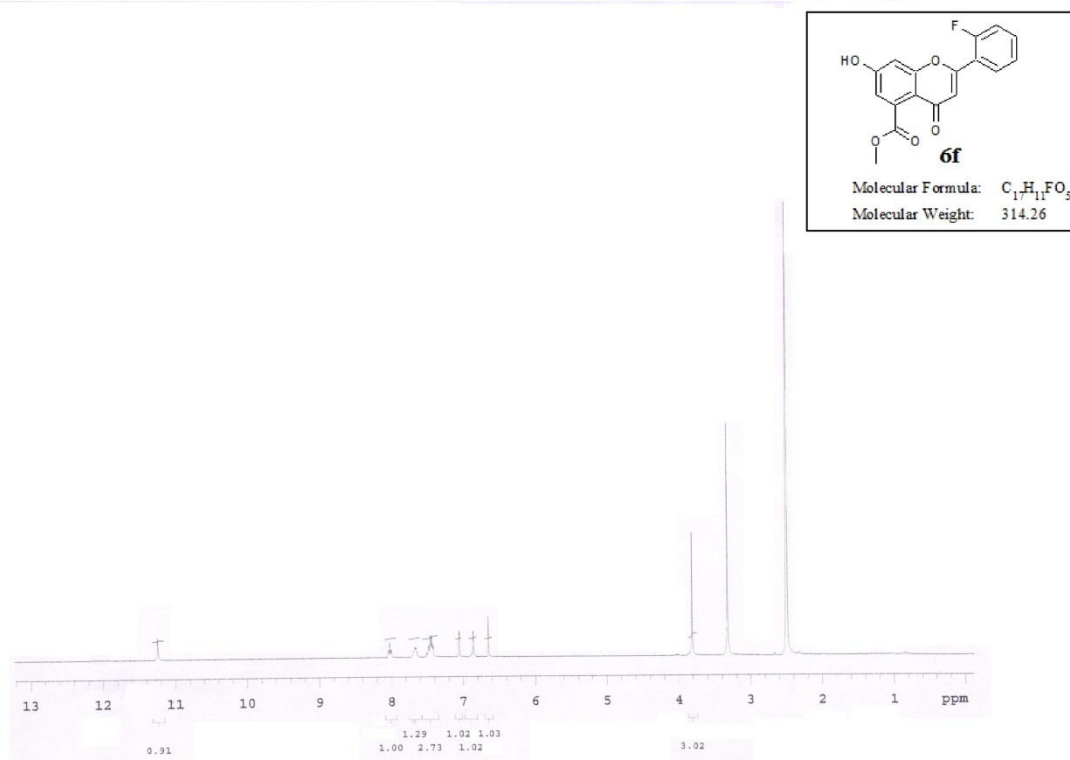
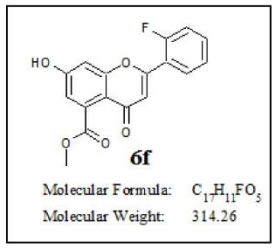
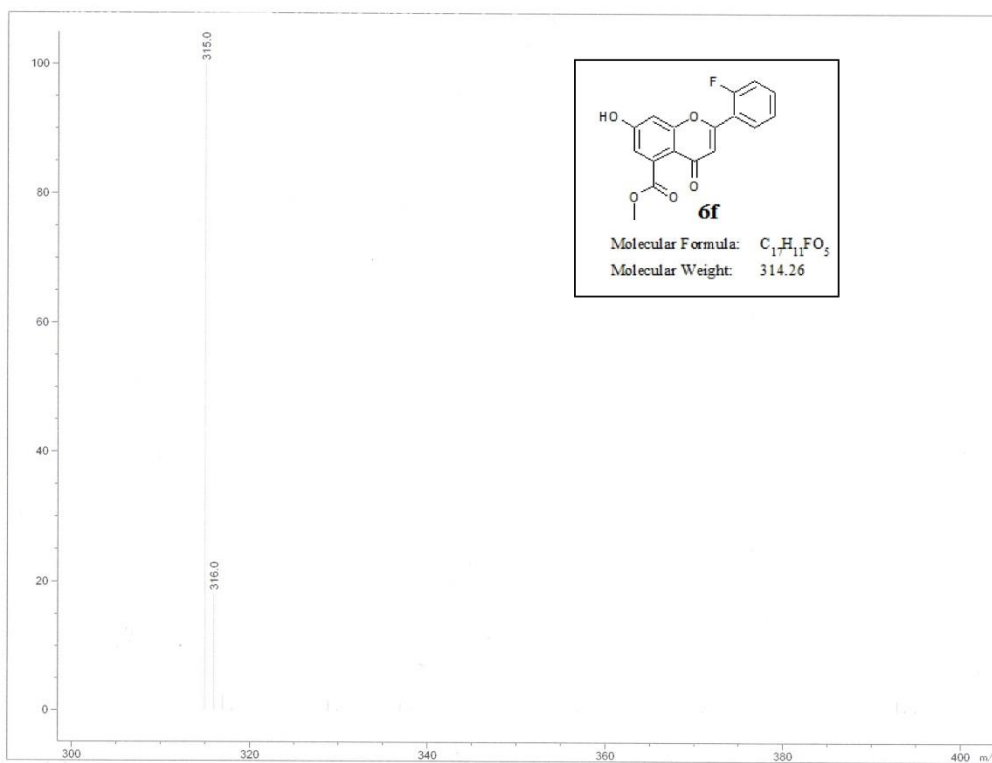
Molecular Formula: $C_{18}H_{14}O_5$
Molecular Weight: 310.30

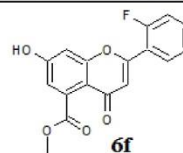




Molecular Formula: $C_{18}H_{14}O_5$
 Molecular Weight: 310.30







Molecular Formula: $C_{11}H_{11}FO_5$
 Molecular Weight: 314.26

