

Supporting information

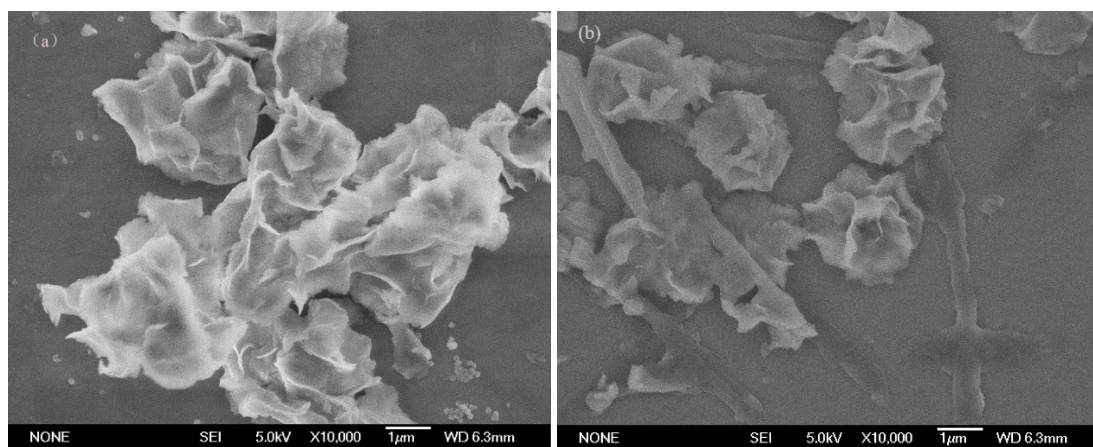


Fig. S1 SEM images of the formation progress of tfdB-JLU-hNFs. Samples were prepared under 1 mg/mL enzyme concentration and 200 mM Cu^{2+} concentration at 25°C in PBS buffers (5 mM, pH=7.5) after 24h (Fig. S1a) and 72h (Fig. S1b).

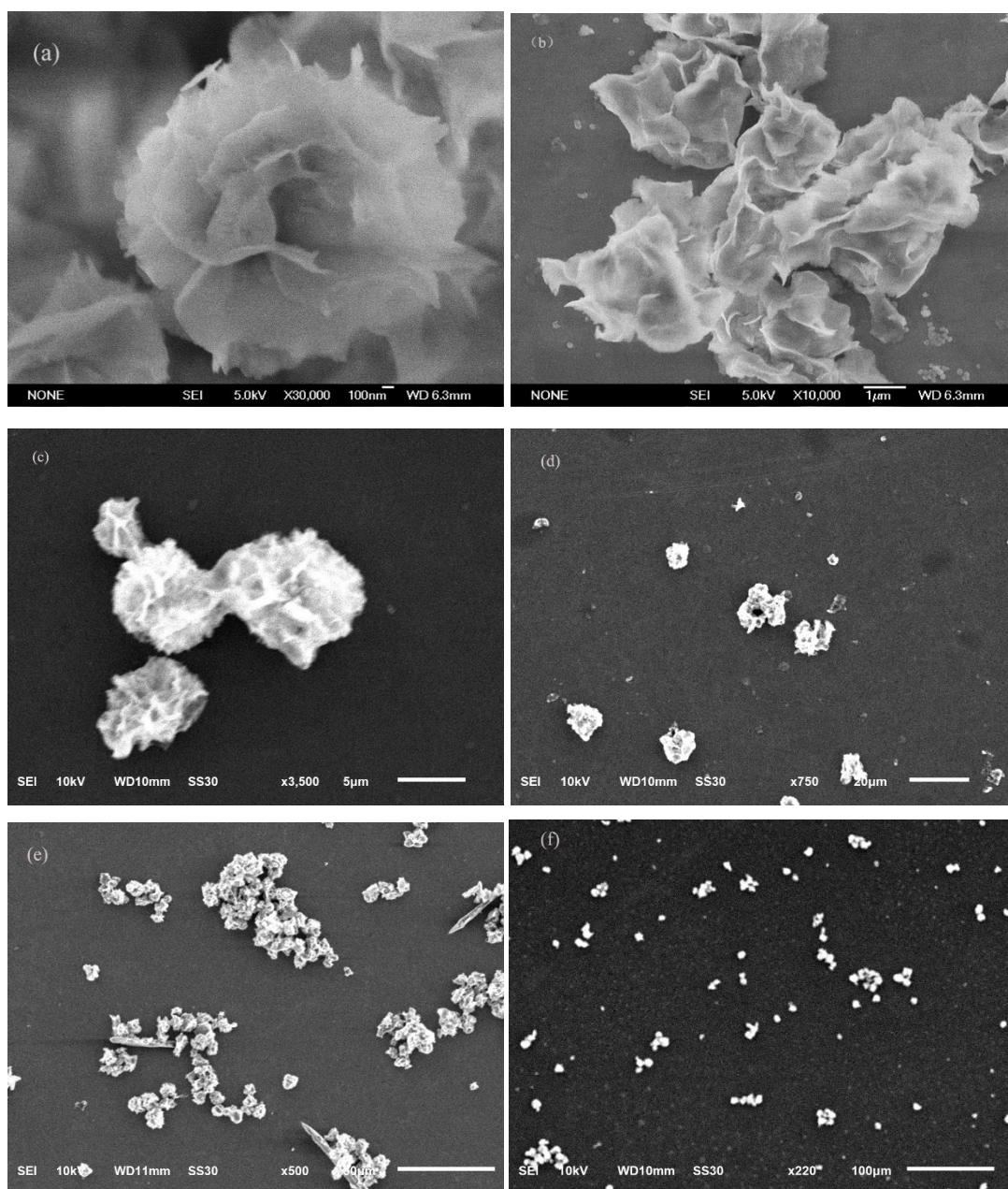


Fig. S2 SEM images of tfdB-JLU-hNFs were prepared under 1 mg/mL enzyme concentration and 200 mM Cu^{2+} concentration at 25°C in PBS buffers (5 mM, pH=7.5) in various resolutions: (a) 100 nm; (b) 1 μm; (c) 5 μm; (d) 20 μm; (e) 50 μm; (f) 100 μm.