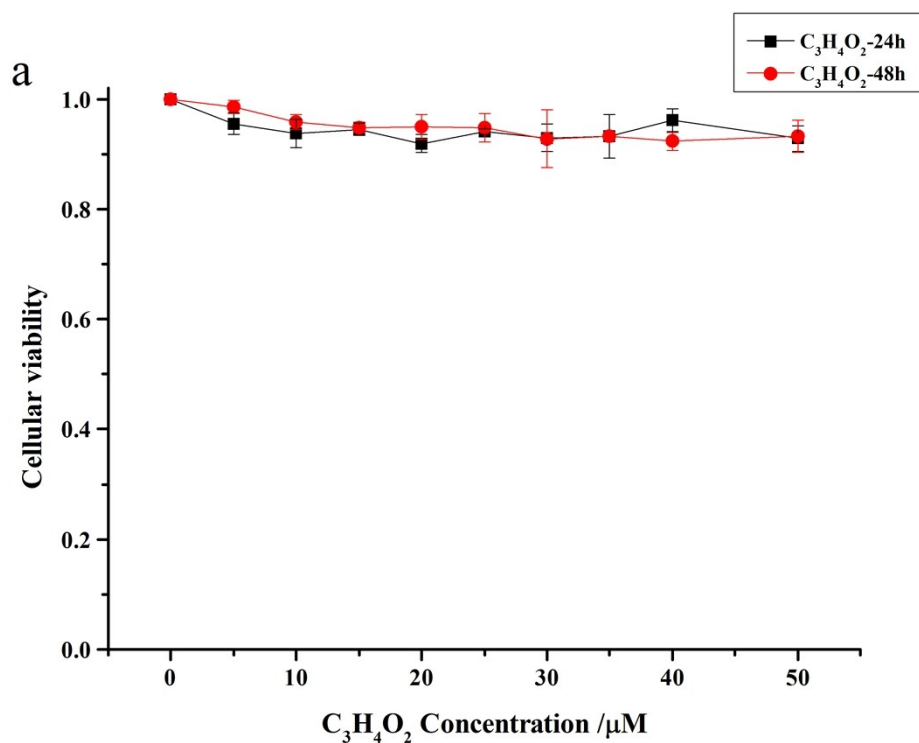


Dual-modal imaging and excellent anticancer efficiency of cisplatin and doxorubicin loaded $\text{NaGdF}_4:\text{Yb}^{3+}/\text{Er}^{3+}$ nanoparticles

Zhiyang Zhang, Jiayi Sheng, Miaomiao Zhang, Xiaoyan Ma, Zhirong Geng*,
Zhilin Wang*

State Key Laboratory of Coordination Chemistry, Collaborative In-novation Center of Advanced Microstructure, School of Chemistry and Chemical Engineering, Nanjing University, Nanjing 210023, P.R. China.

**Address correspondence to: Zhirong Geng and Zhilin Wang, State Key Laboratory of Coordination Chemistry, Collaborative In-novation Center of Advanced Microstructure, School of Chemistry and Chemical Engineering, Nanjing University, Nanjing 210023, PR China. Tel.:86-25-89689026. Fax: 86-25-89687761. E-mail: gengzr@nju.edu.cn, wangzl@nju.edu.cn*



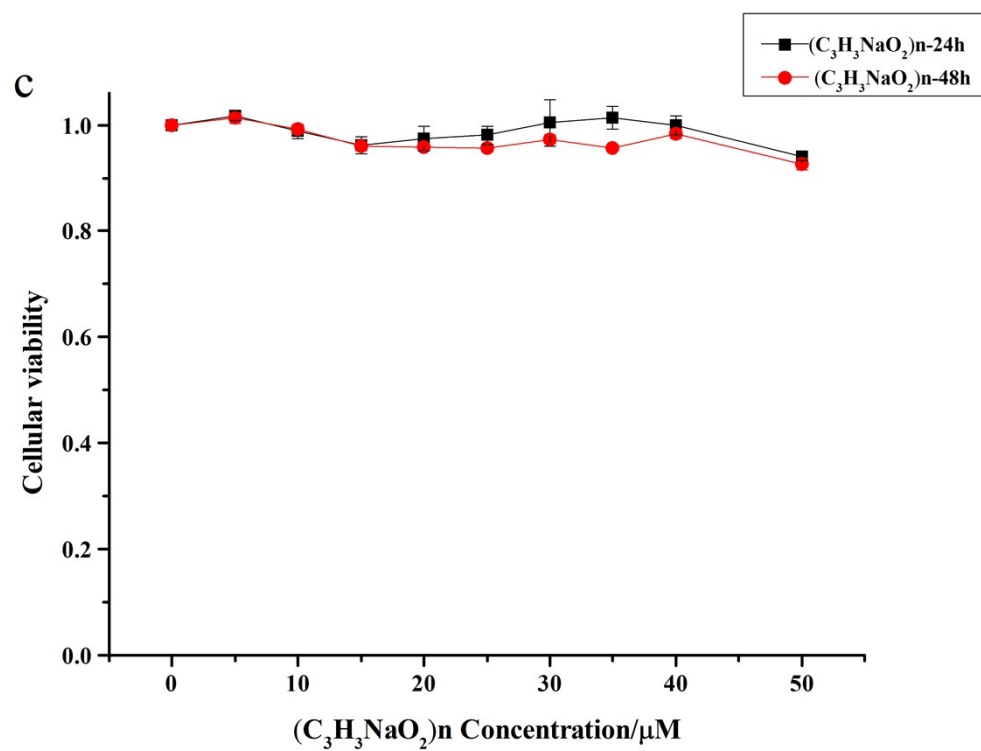
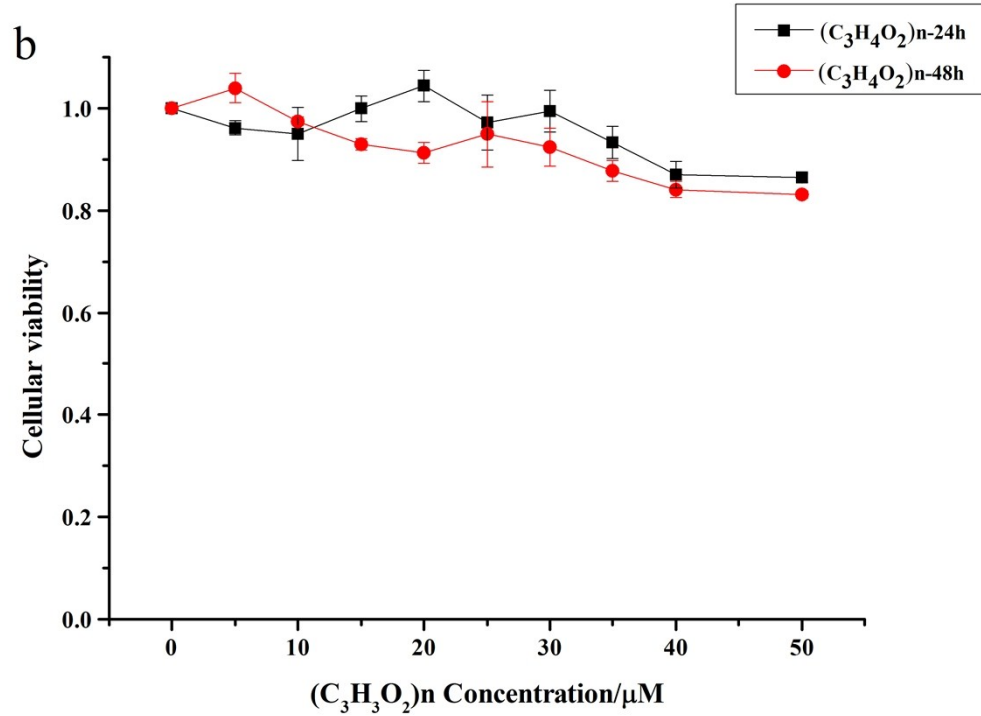


Fig. S1 Cytotoxicity of acrylate, polyacrylate and sodium polyacrylate against HeLa cancer cell lines at 24 and 48 h. a. acrylate; b. polyacrylate; c. sodium polyacrylate