

Supporting Information

The structure and configuration changes of multifunctional peptide vectors enhance gene delivery efficiency

Sen Yang[†], Zhao Meng[†], Ziyao Kang, Chao Sun, Taoran Wang, Siliang Feng, Qingbin Meng* and Keliang Liu*

State Key Laboratory of Toxicology and Medical Countermeasures, Beijing Institute of Pharmacology and Toxicology, Beijing, 100850, China.

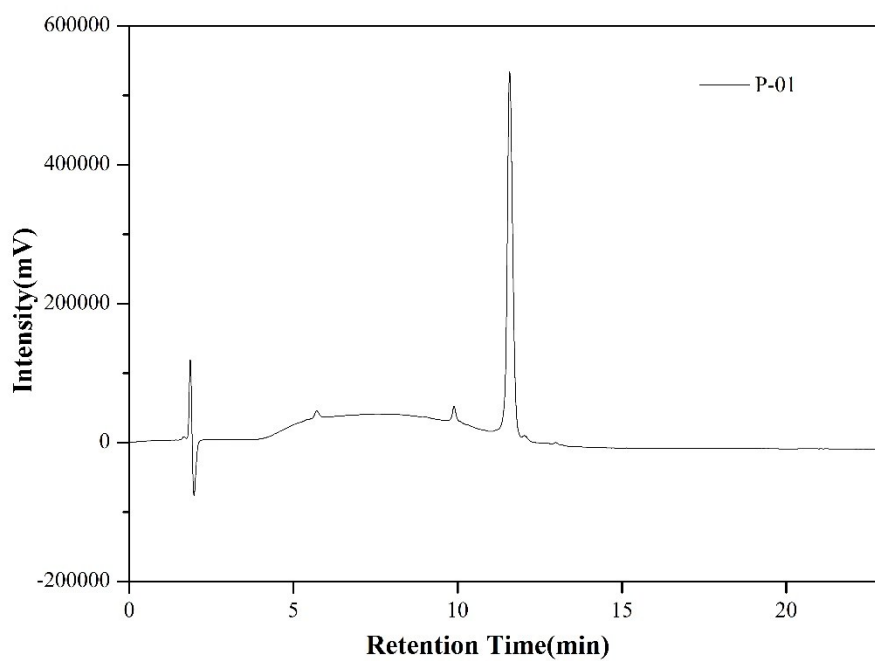
[†]These authors contributed equally to this work.

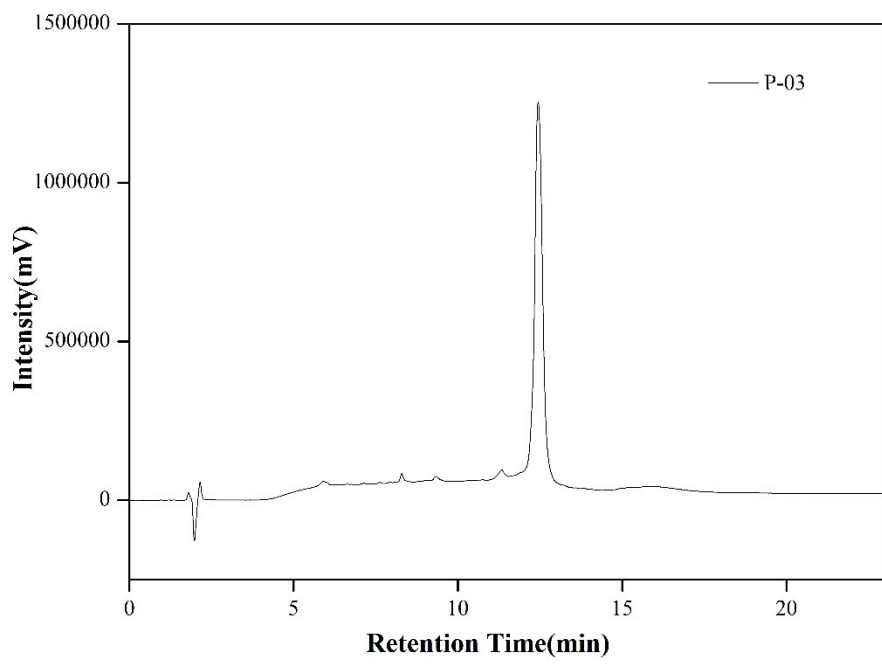
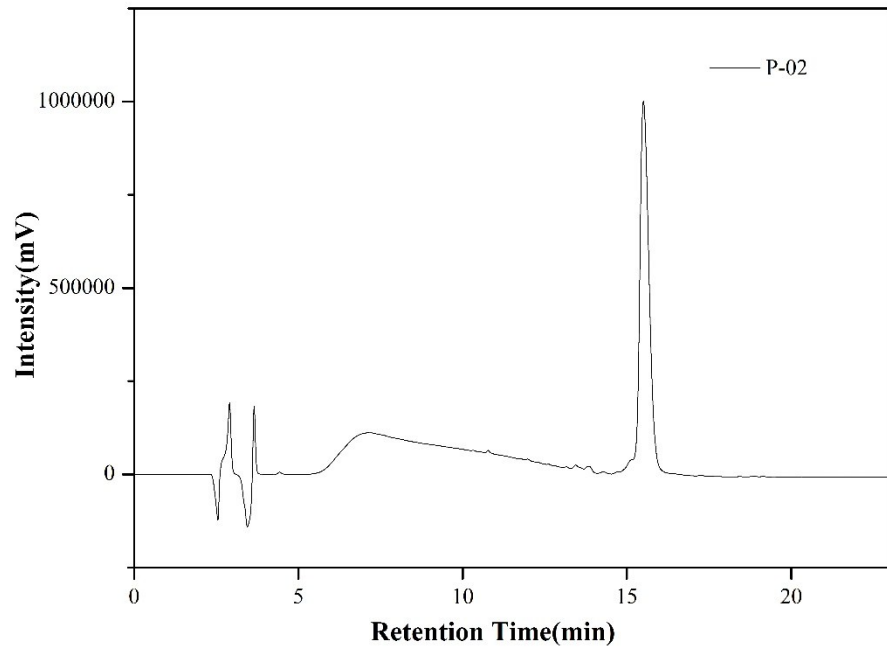
Email: nankaimqb@sina.com, keliangliu55@126.com; Fax: +86-10-68211656; Tel: +86-10-68169363

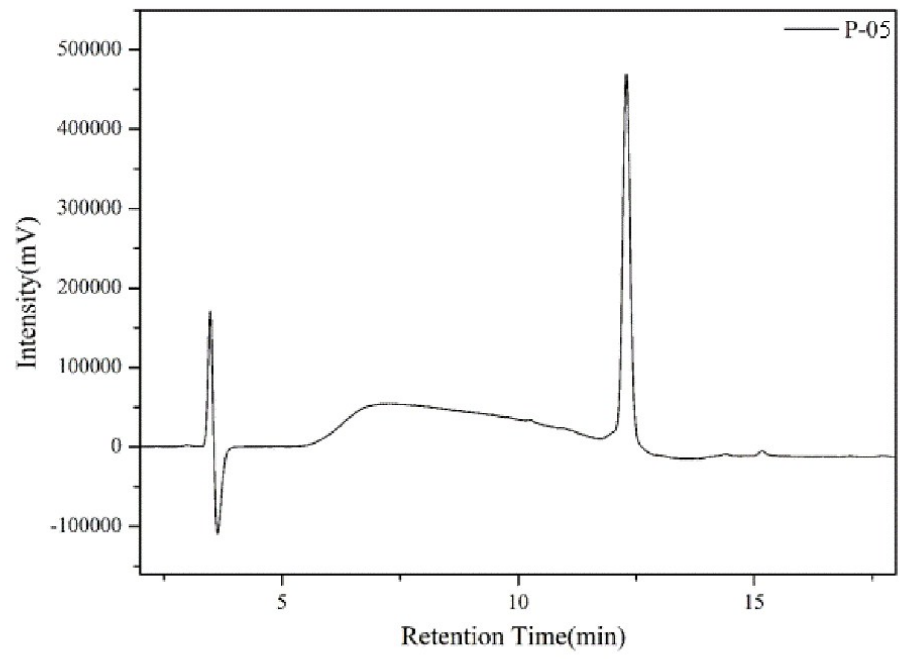
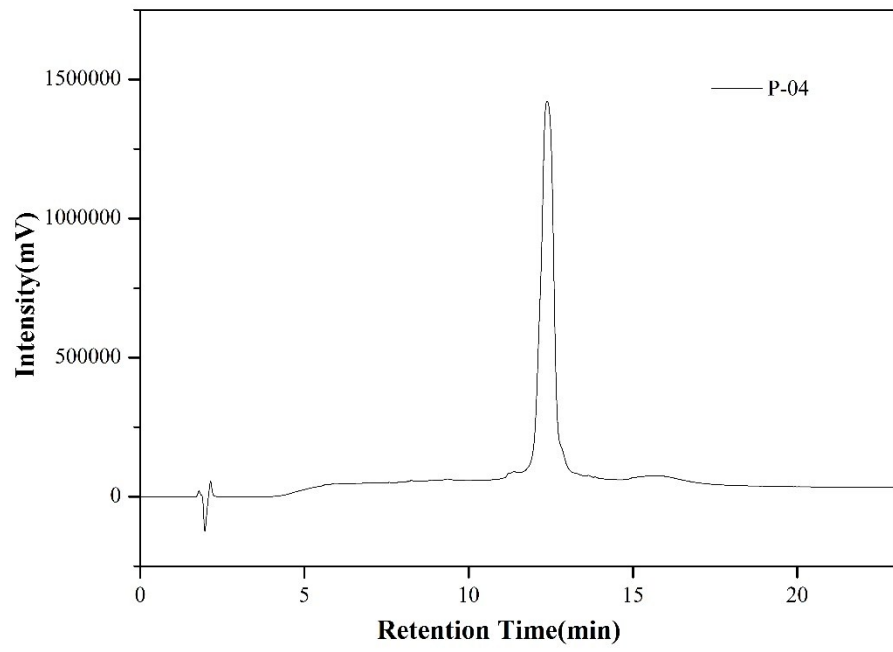
Table S1 Percentage of α -helical conformation for peptide vectors

Compounds	Percentage of α -helical conformation (%)
P-01	32.18
P-02	34.67
P-03	32.38
P-04	34.60
P-05	24.72
P-06	27.99

Figure S1 RP-HPLC of peptide vectors







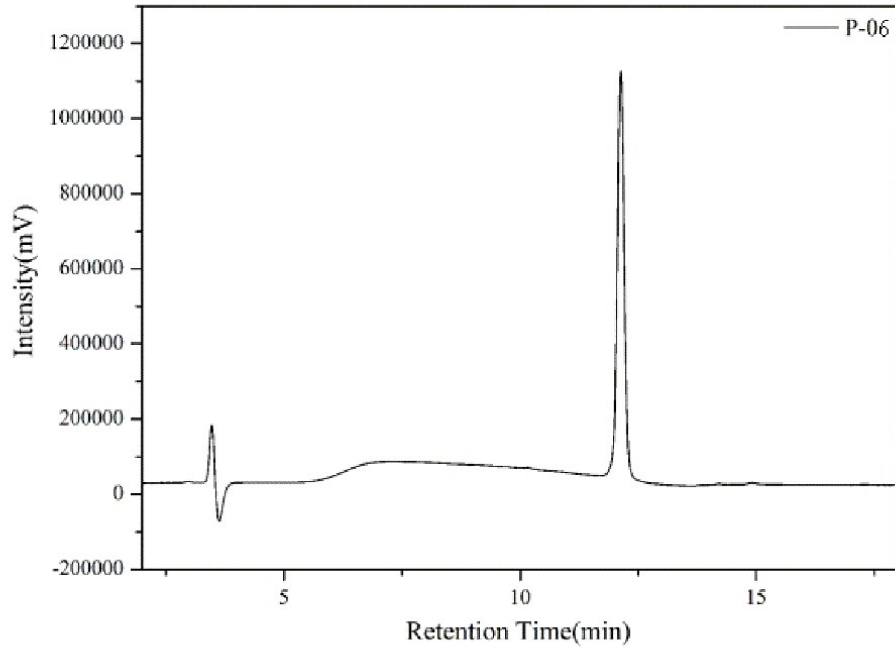
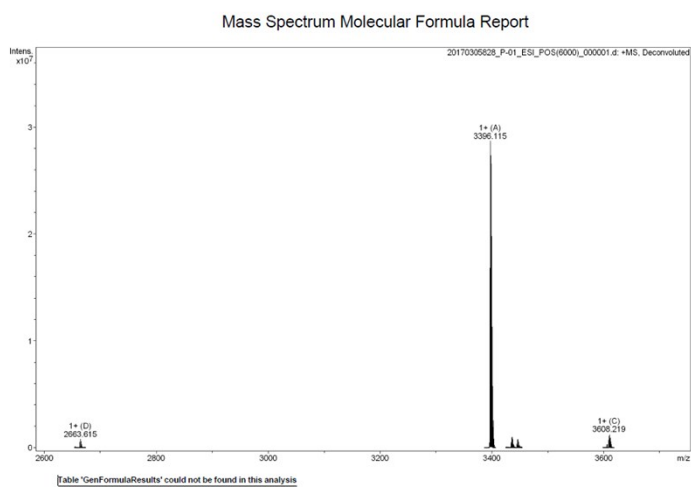
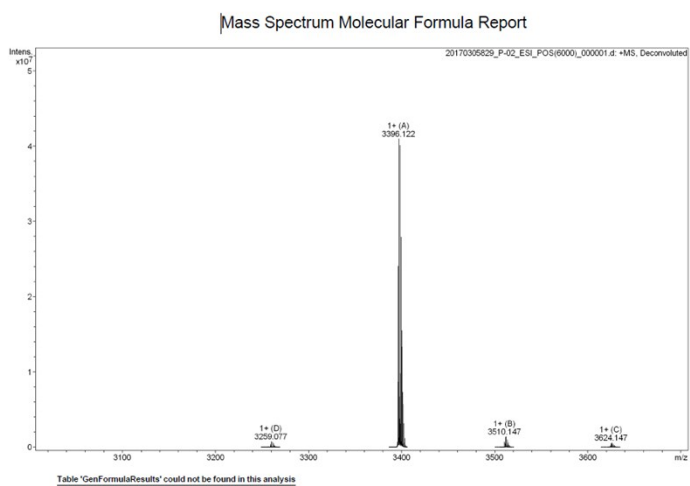


Figure S2 ESI-MS and MALDI-TOF of peptide vectors

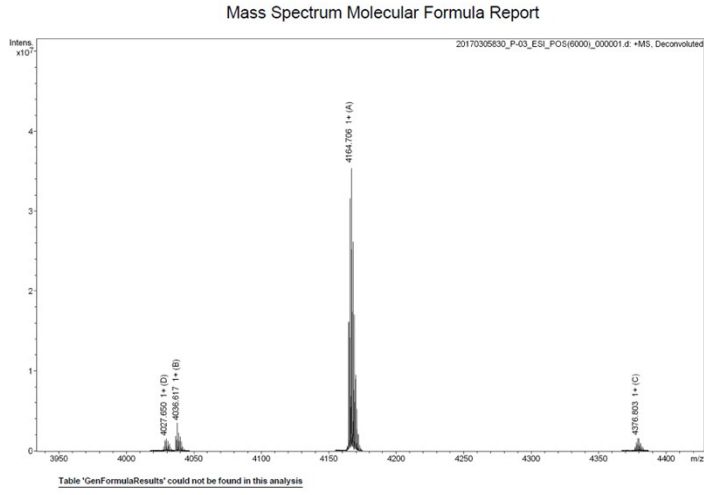
P-01



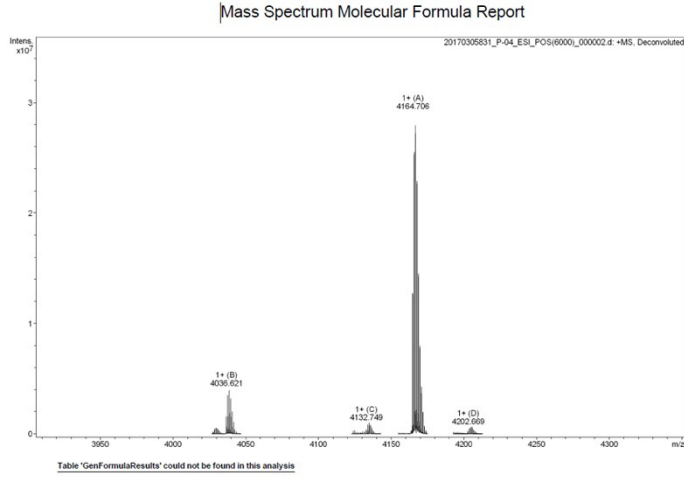
P-02



P-03

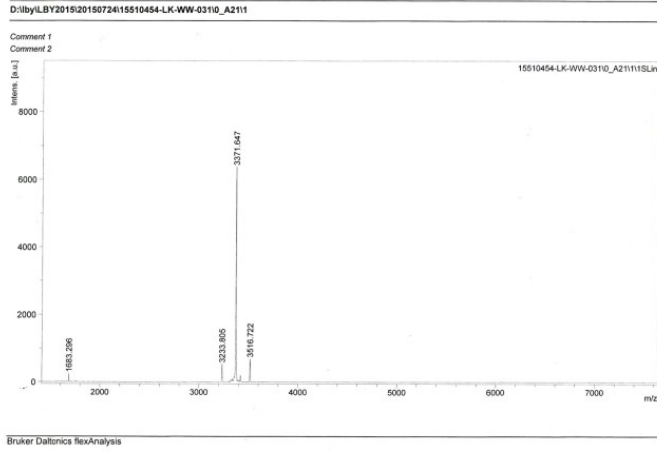


P-04



P-05

077



P-06

Mass Spectrum Molecular Formula Report

