

Fig. S1. PXRD patterns of 2% metal or metal alloy co-catalysts deposited TiO₂ nanofiber photocatalysts.

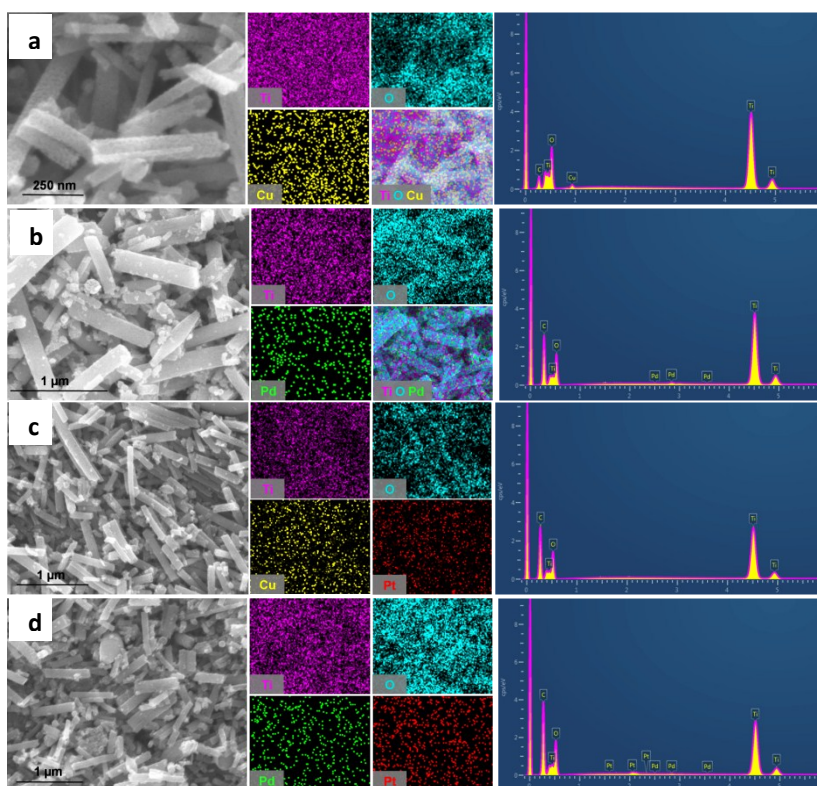


Fig. S2. Energy dispersive spectroscopy (EDS) elemental mapping and EDS spectra of (a) Cu/TiO₂, (b) Pd/TiO₂, (c) PtCu/TiO₂, and Pt₂Pd/TiO₂ nanofiber photocatalysts.

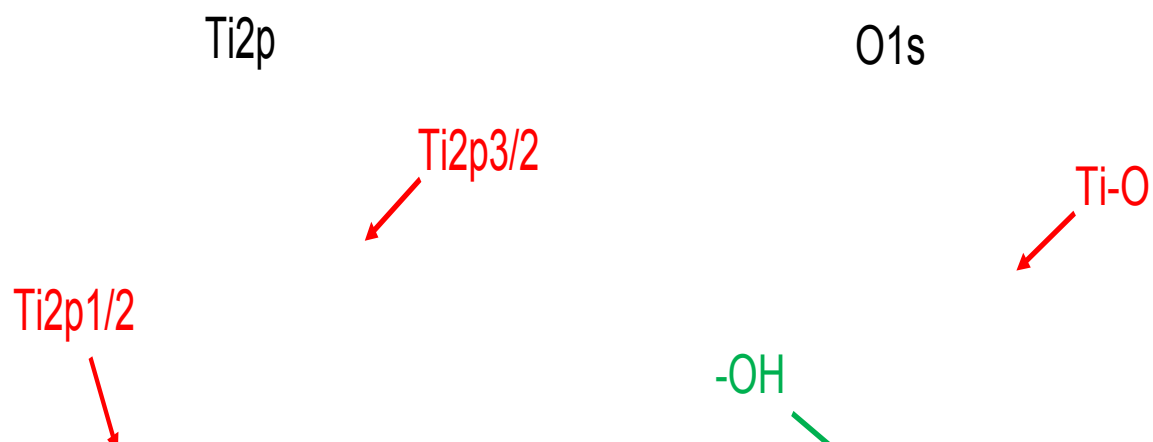


Fig. S3. XPS spectra of Ti and O peaks of Cu/TiO₂ nanofiber photocatalyst.