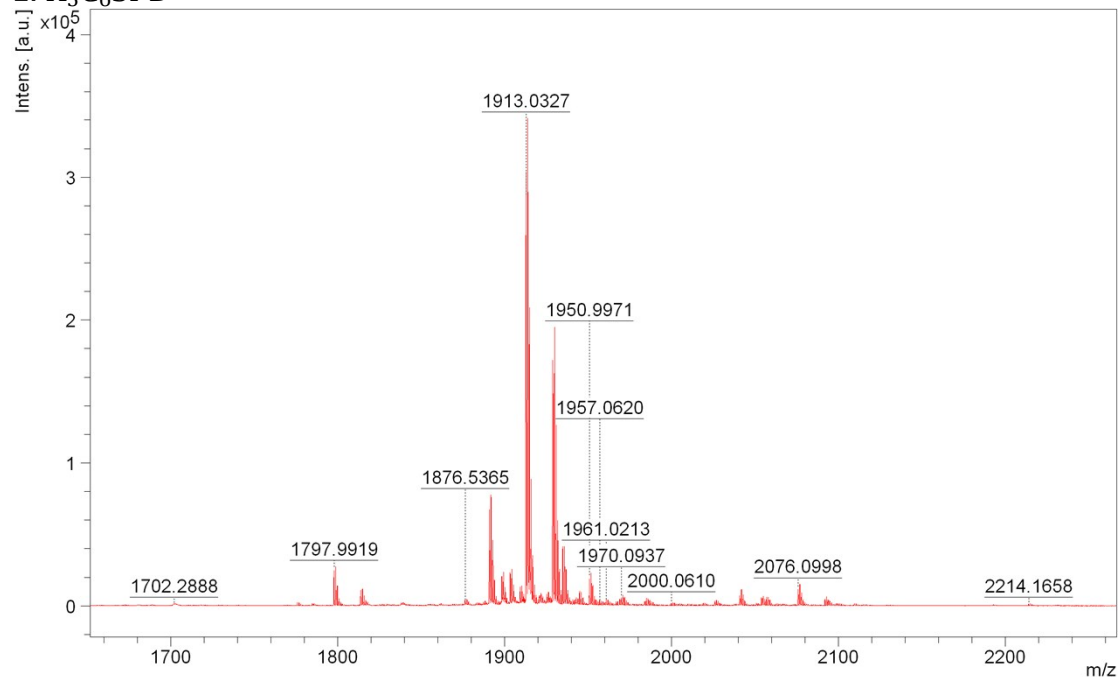


Supporting Figure

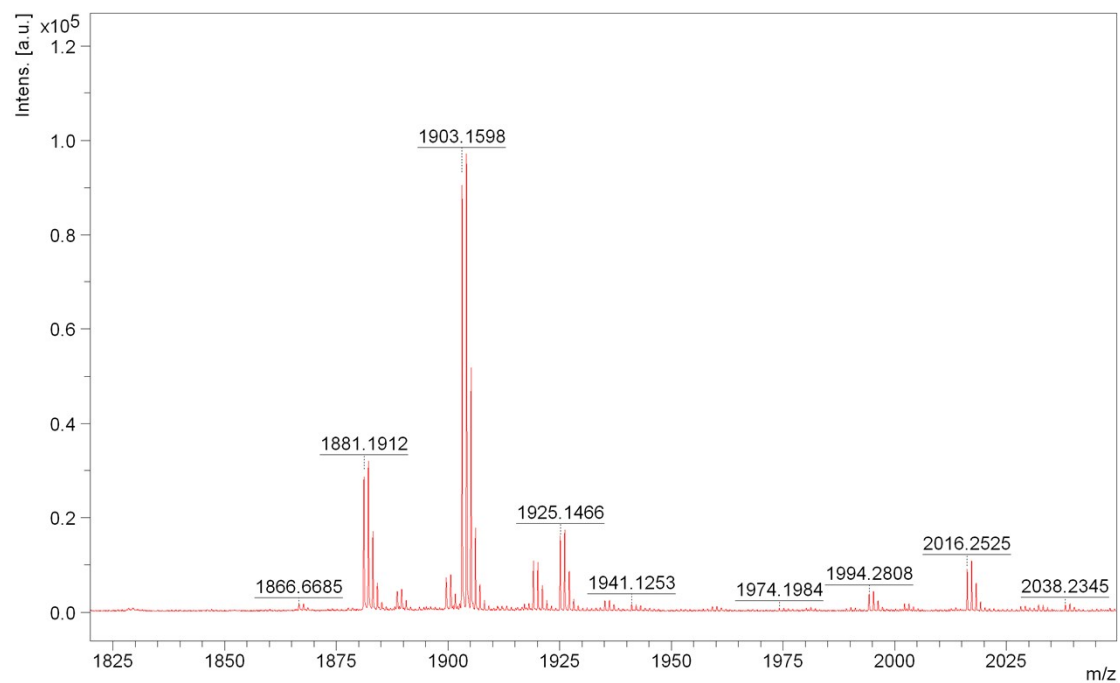
1. K₃C₆SPD



Theoretical MW: 1891

Measured MW: 1891 ($[M-H+Na^+]=1913$)

2. F20H



Theoretical MW: 1881

Measured MW: 1881 ($[M-H+Na^+]=1903$)

Fig. S1 MALDI-mass spectra of peptide K3C6SPD and F20H.