

Supplementary material

Microwave-assisted delivery of an anticancer drug to cancer cells

Sina Atrin Mazinani,^{1,2} Jeffrey A. Stuart,^{2,3} Hongbin Yan^{1,2*}

¹Department of Chemistry, Brock University, 1812 Sir Isaac Brock Way, St. Catharines, Ontario,
Canada L2S 3A1

²Centre for Biotechnology, Brock University, 1812 Sir Isaac Brock Way, St. Catharines, Ontario,
Canada L2S 3A1

³Department of Biological Sciences, Brock University, 1812 Sir Isaac Brock Way, St. Catharines,
Ontario, Canada L2S 3A1

*Corresponding author. Tel.: +19056885550×3545. E-mail address: tyan@brocku.ca

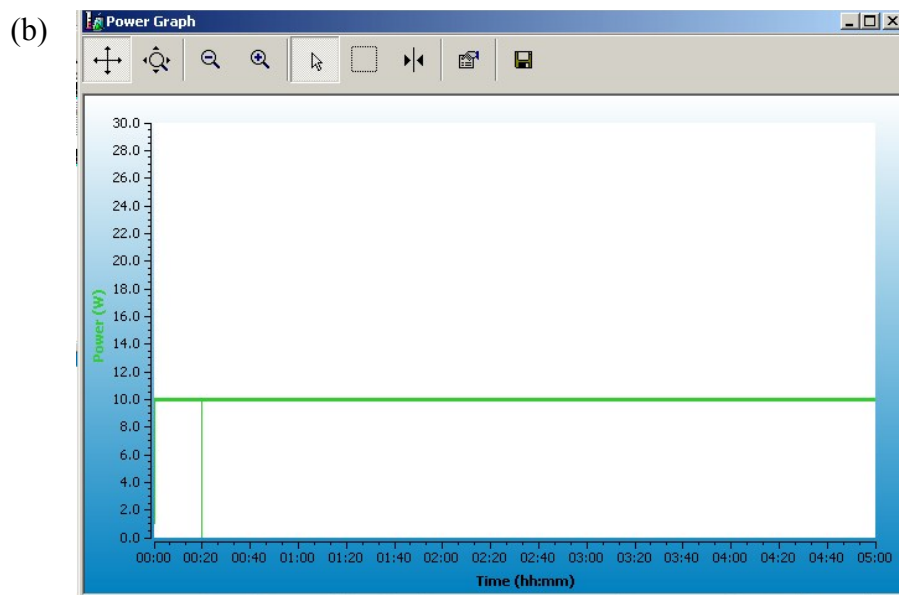
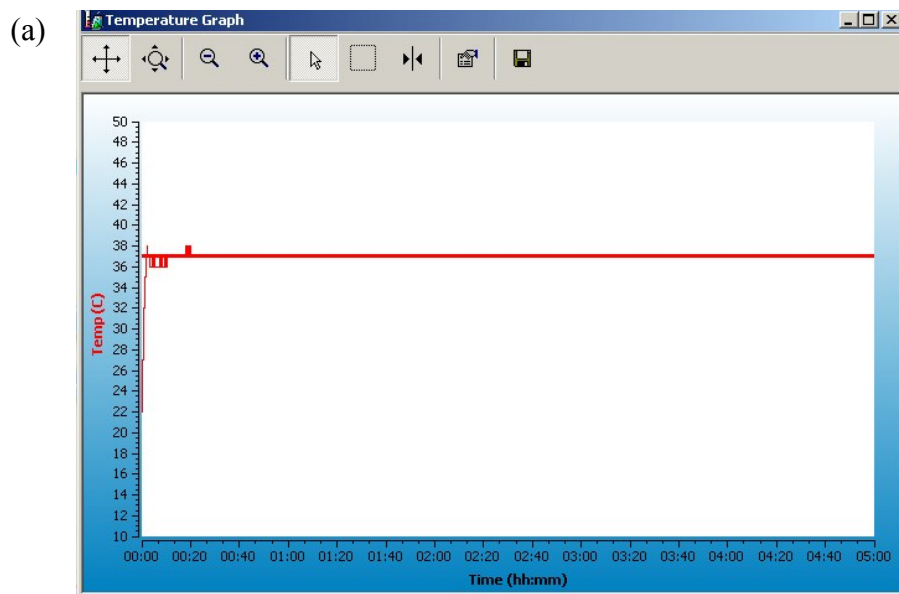


Figure S1. (a). Representative temperature and (b) microwave power profiles in the microwave reactor.