

Electronic Supplementary Information

Lipid- and Gut Microbiota-modulating Effects of Graphene Oxide Nanoparticles in High-fat Diet-induced Hyperlipidemic Mice

Juan Li¹, Shengmei Yang¹, Jiaqi Yu³, Rongli Cui¹, Ru Liu¹, Runhong Lei¹, Yanan Chang¹,
Huan Geng¹, Yanxia Qin¹, Weihong Gu¹, Shibo Xia¹, Kui Chen¹, Jianglong Kong¹,
Guogang Chen^{*2}, Chongming Wu^{*3}, Gengmei Xing^{*1}

1. CAS Key Laboratory for Biomedical Effects of Nanomaterial & Nanosafety, Institute of High Energy Physics, Chinese Academy of Science (CAS), Beijing 100049, China

2. College of Food Science, Shihezi University, Shihezi 832000, China

3. Pharmacology and Toxicology Research Center, Institute of Medicinal Plant Development, Chinese Academy of Medical Sciences & Peking Union Medical College, Beijing 100193, China

Table S1. Oligonucleotide primers used in this work

Targets	Primers	Sequence (5'-3')
All bacteria	Uni331 modF	TCCTACGGGAGGCAGCAGTG
	E533 modR	TTACCGCGGCTGCTGGCACG
Clostridium cluster IV	Sg-Clept-F	GCACAAGCAGTGGAGT
	Sg-Clept-R3	CTTCCTCCGTTTTGTCAA
Costridium cluster XIVa	Erec 482 F	CGGTACCTGACTAAGAAGC
	Erec 688 R	GTCCTCCTAATATCTACGC
Allobaculum muciniphila	Allo-F	ACCTGCGGTGCATTAGYTGG
	Allo-R	GCATYGCTCGTTCAGGCTTGC
Butyryl coenzyme A transferase	BcoA-F	GYTNGGHATYGGYGGHATGC
	BcoA-R	CCTGCCTTTGCAATRTCACRAANGC
Butyrate kinase	Buk-F	TGYWDKHGTWGGHMGWGGYG
	Buk-R	TCATCTRYAACWACHGGRTCY

Samples

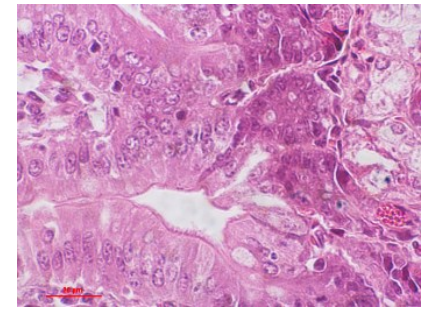
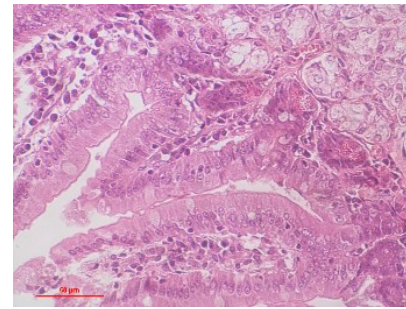
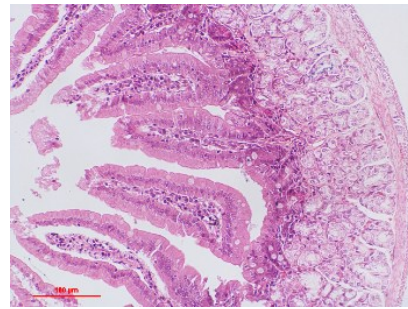
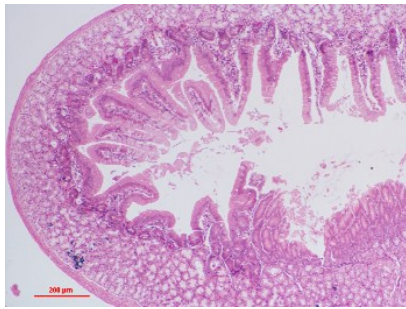
X4

X10

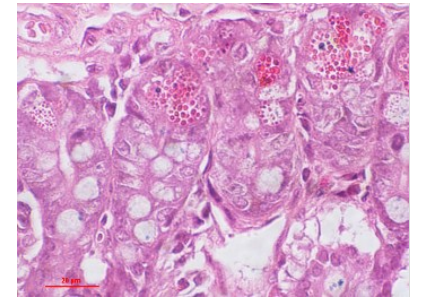
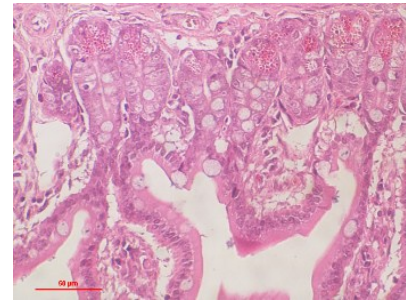
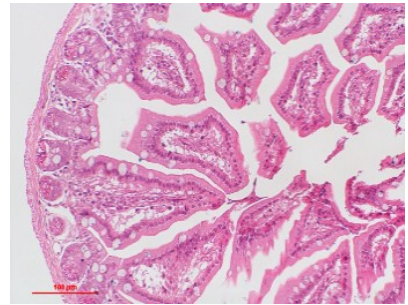
X20

X40

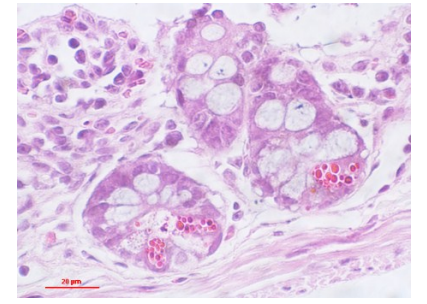
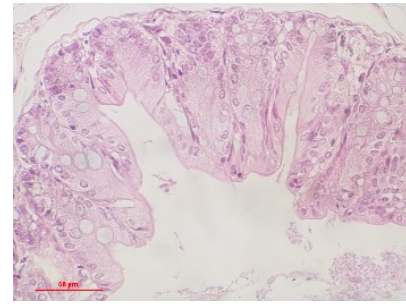
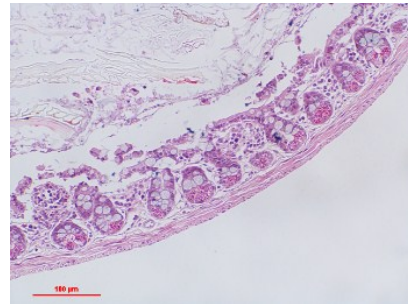
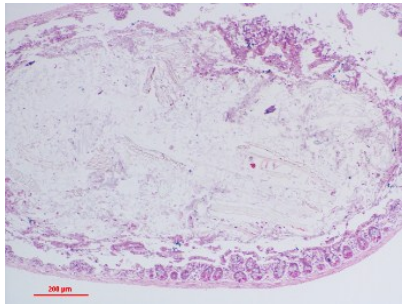
duodenal



jejunum



ileum



cecum

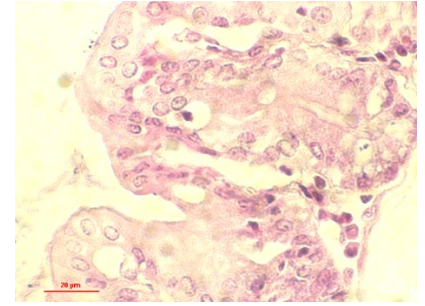
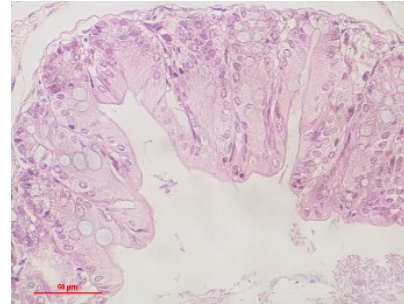
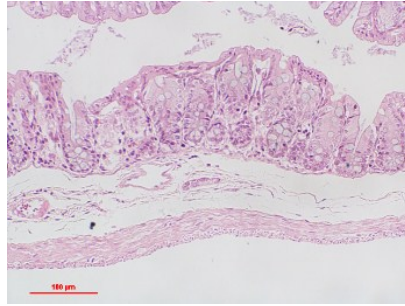


Figure S1 Histopathology of gastrointestinal tissue. The pictures in the first line were for duodenal. The pictures in second line were for jejunum. The pictures in the third line were ileum and the picture in the fourth line were for cecum. The scale bars were 200 μ m in the pictures magnified 4 times. The scale bars were 100 μ m in the pictures magnified 10 times. The scale bars were 50 μ m in the pictures magnified 20 times. The scale bars were 20 μ m in the pictures magnified 40 times.