

Electronic Supplementary Information (ESI)

Determination of ONOO⁻ concentration

The concentration of ONOO⁻ solution was identified by full wavelength scanning after diluting with 0.1 M NaOH solution. 0.1 M NaOH solution was taken as blank solution and spectra was detected from 200-400nm (**Fig. S1**). The maximum absorbance could be detected at 302nm wavelength and the ONOO⁻ concentration could be calculated as follow:

$$C = Abs/1670 \times N \times 1000(mM)$$

Abs—Absorbance of ONOO⁻ solution at 302nm wavelength;

N—Dilution multiple of ONOO⁻ solution diluted by 0.1M NaOH solution.

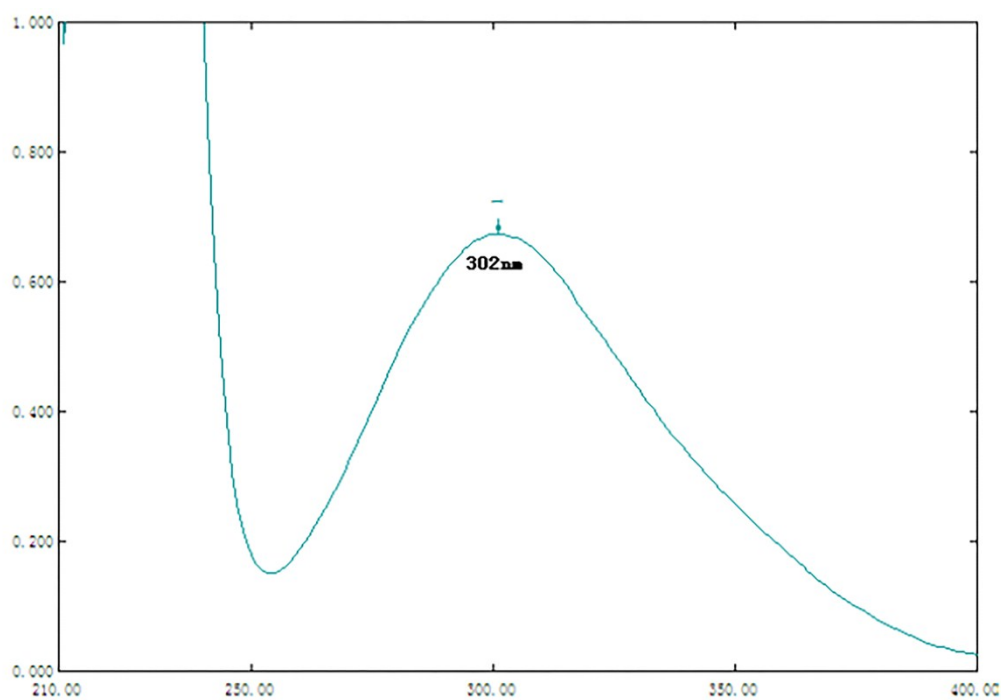


Figure. S1. Full wavelength scanning spectrum of ONOO⁻ in the range from 200 to 400nm.