

Fig. S1. MS/MS spectra and cleavage pathways of compounds 2 (A), 5 (B), 9 (C), 10, 17 (D), 22, 23 (E), 11 (F), 18 (G), 19 (H), and 21 (I).

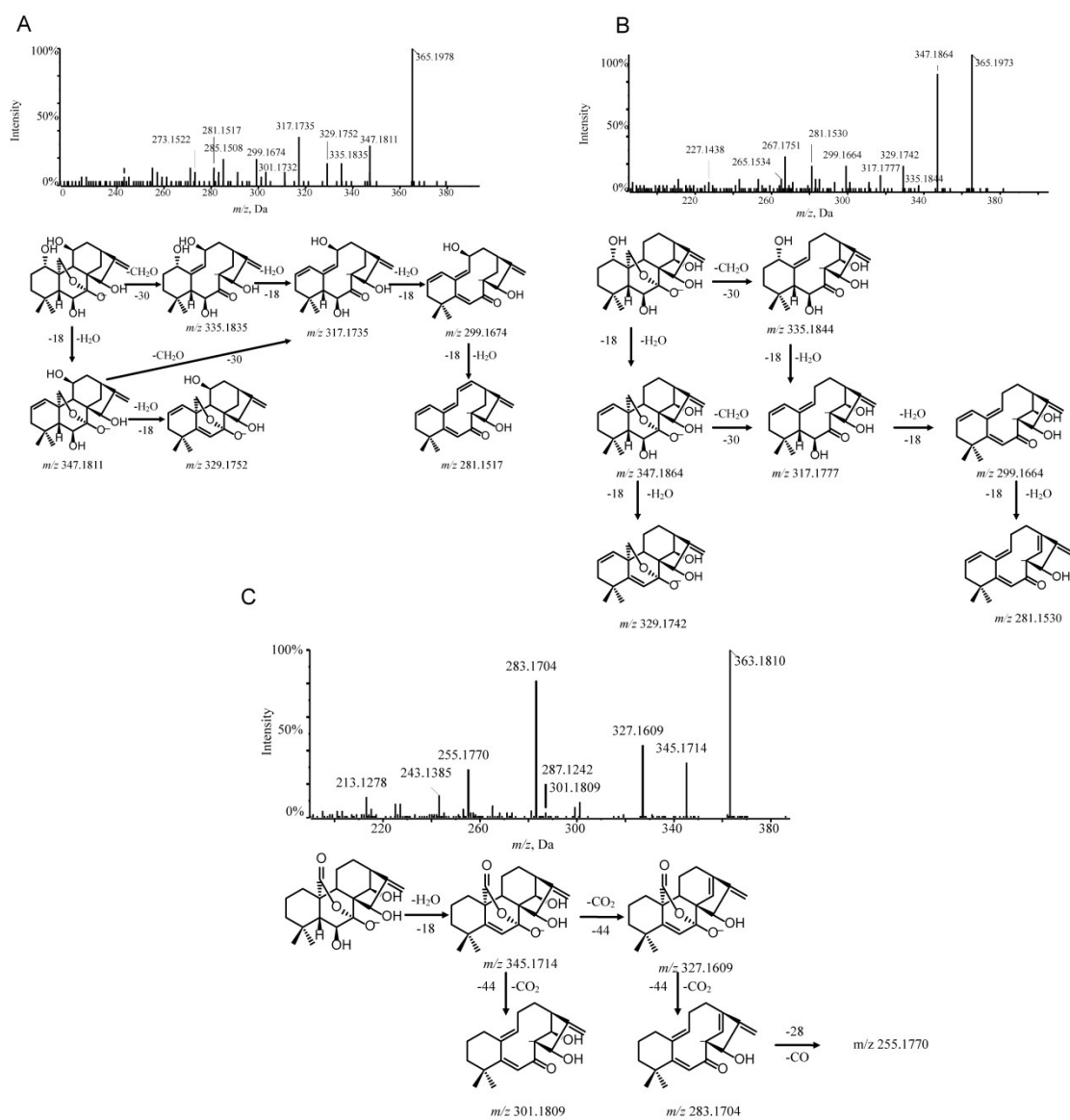


Fig. S2. MS/MS spectra and cleavage pathways of compounds hebeirubescensin K (A), enmenol (B) and rabdotermin A (C).



Fig. S3. MS/MS spectra and cleavage pathways of compounds 7 (A), 15 (B) and 20 (C).

Table S1

The component matrix of the 8 detected compounds of *Isodon japonica*.

	PC1	PC2
Hebeirubescensin K	0.805	0.486
Enmenol	0.821	0.417
Henryin	-0.028	0.938
Lasiodonin	-0.513	-0.002
Oridonin	0.931	-0.304
Glaucocalyxin A	0.841	0.111
Ponicidin	0.961	-0.221
Rabdoternin A	0.908	-0.336