

Supporting information for

Anti-Phytopathogenic Sesquiterpenoid-Xanthone Adducts from Potato Endophytic Fungus *Bipolaris eleusines*

Juan He, Man-Si Yang, Wen-Xiang Wang, Zheng-Hui Li, Waill Ahmed Mohamed Elkhateeb,
Ting-Chi Wen,* Hong-Lian Ai,* and Tao Feng*

Contents

Supplementary Figures

- Figure S1. ¹H NMR spectrum in CDCl₃ for bipolenin I (1)
- Figure S2. ¹³C NMR and DEPT spectrum in CDCl₃ for bipolenin I (1)
- Figure S3. ¹H-¹H COSY spectrum in CDCl₃ for bipolenin I (1)
- Figure S4. HSQC spectrum in CDCl₃ for bipolenin I (1)
- Figure S5. HMBC spectrum in CDCl₃ for bipolenin I (1)
- Figure S6. ROESY spectrum in CDCl₃ for bipolenin I (1)
- Figure S7. HRESIMS for bipolenin I (1)
- Figure S8. ¹H NMR spectrum in CDCl₃ for bipolenin I (1)
- Figure S9. ¹³C NMR and DEPT spectrum in CDCl₃ for bipolenin J (2)
- Figure S10. ¹H-¹H COSY spectrum in CDCl₃ for bipolenin J (2)
- Figure S11. HSQC spectrum in CDCl₃ for bipolenin J (2)
- Figure S12. HMBC spectrum in CDCl₃ for bipolenin J (2)
- Figure S13. ROESY spectrum in CDCl₃ for bipolenin J (2)
- Figure S14. HRESIMS for bipolenin J (2)

1. Supplementary Figures

Figure S1. ¹H NMR spectrum in CDCl₃ for bipolenin I (1)

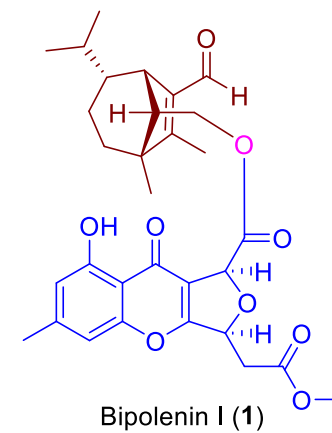
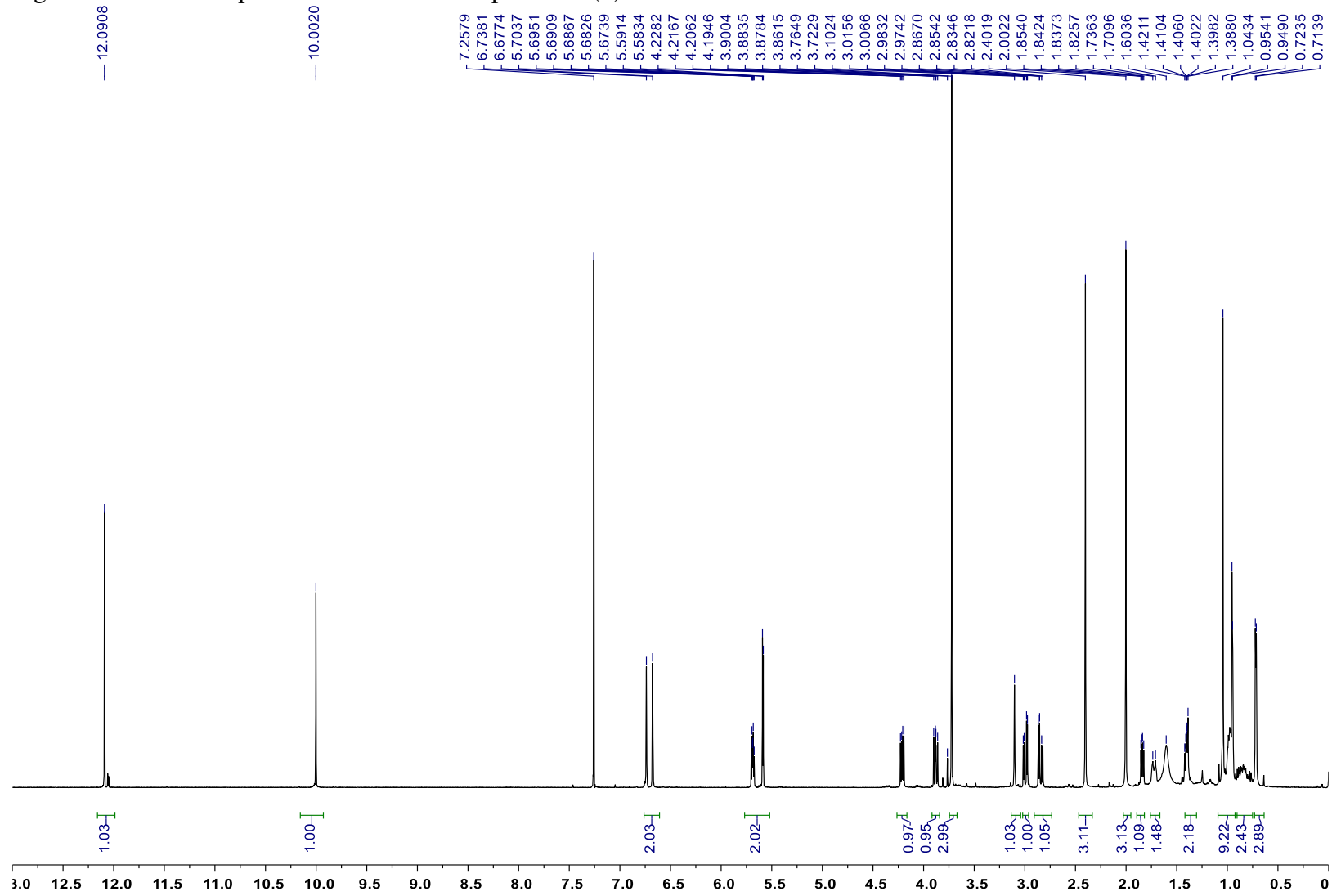


Figure S2. ^{13}C NMR and DEPT spectrum in CDCl_3 for bipolenin I (**1**)

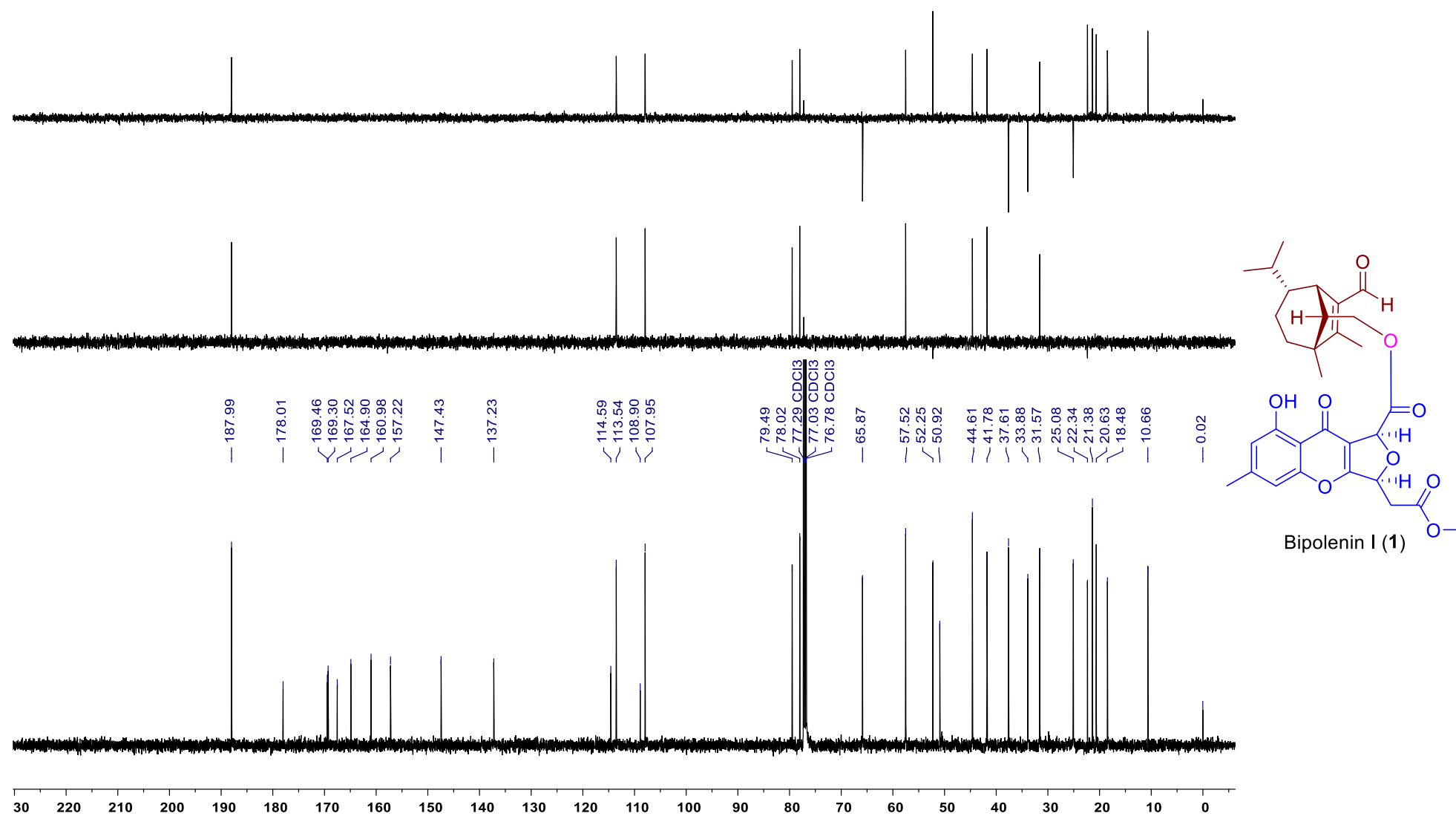


Figure S3. ^1H - ^1H COSY spectrum in CDCl_3 for bipolenin I (**1**)

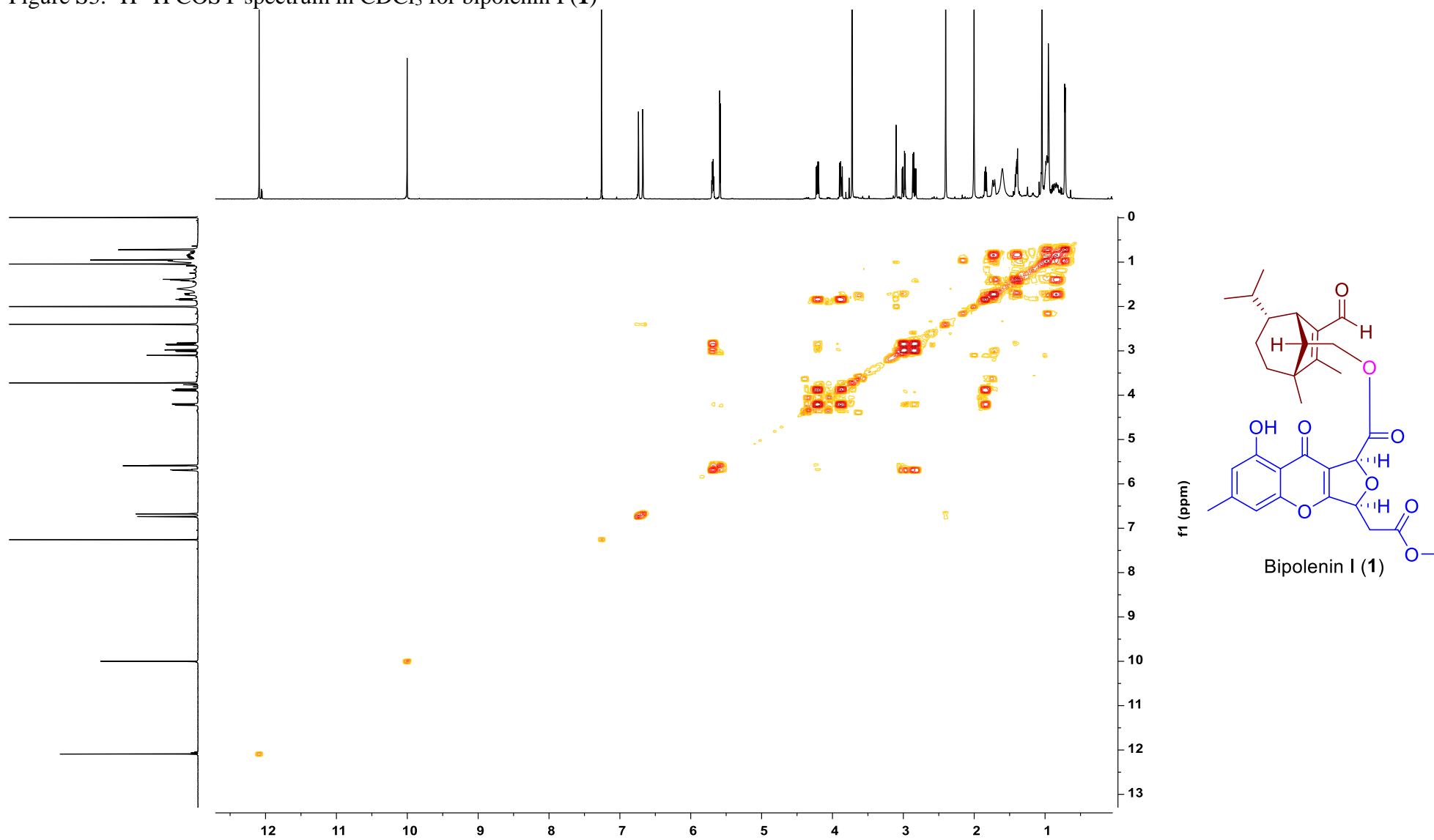


Figure S4. HSQC spectrum in CDCl₃ for bipolenin I (**1**)

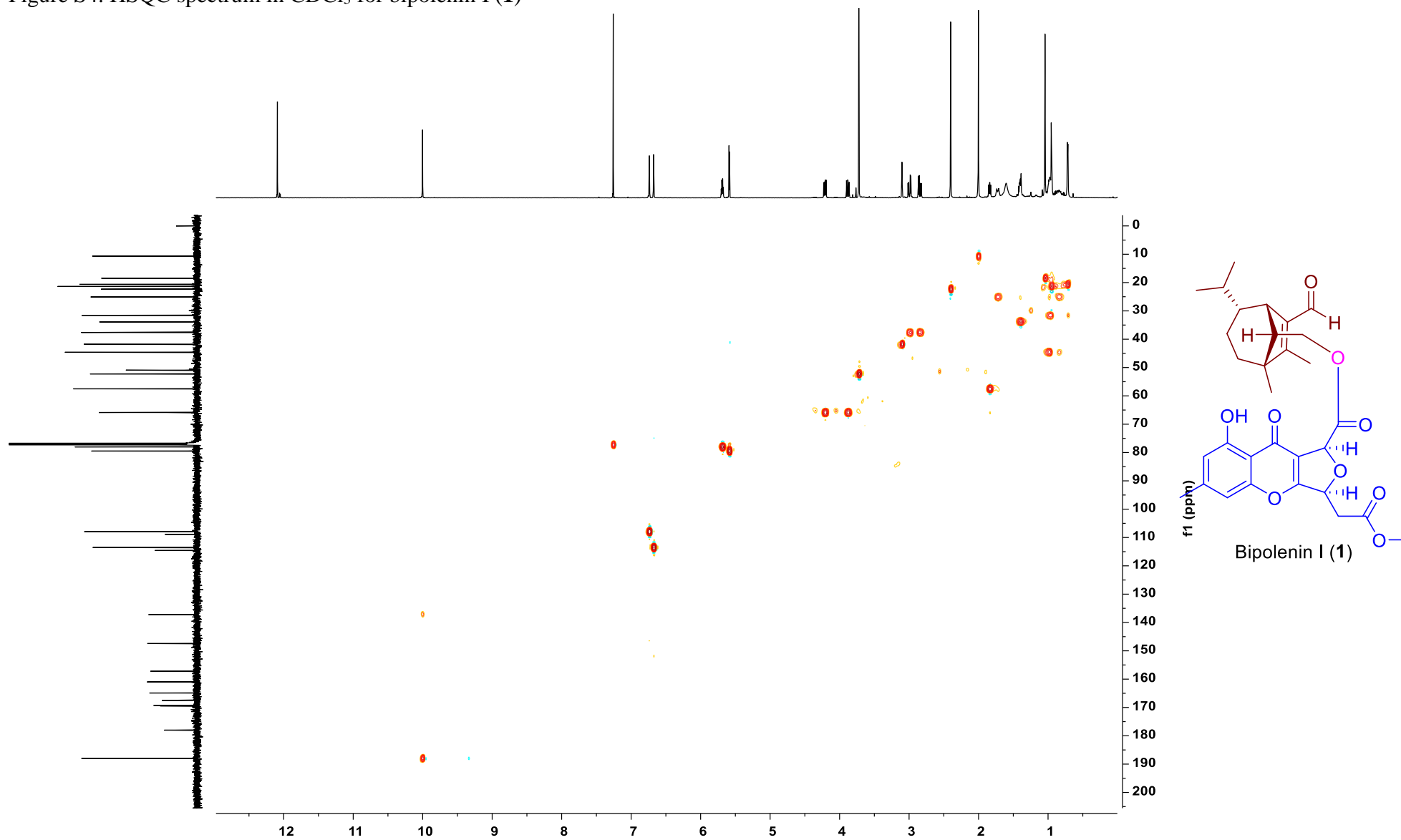


Figure S5. HMBC spectrum in CDCl₃ for bipolenin I (**1**)

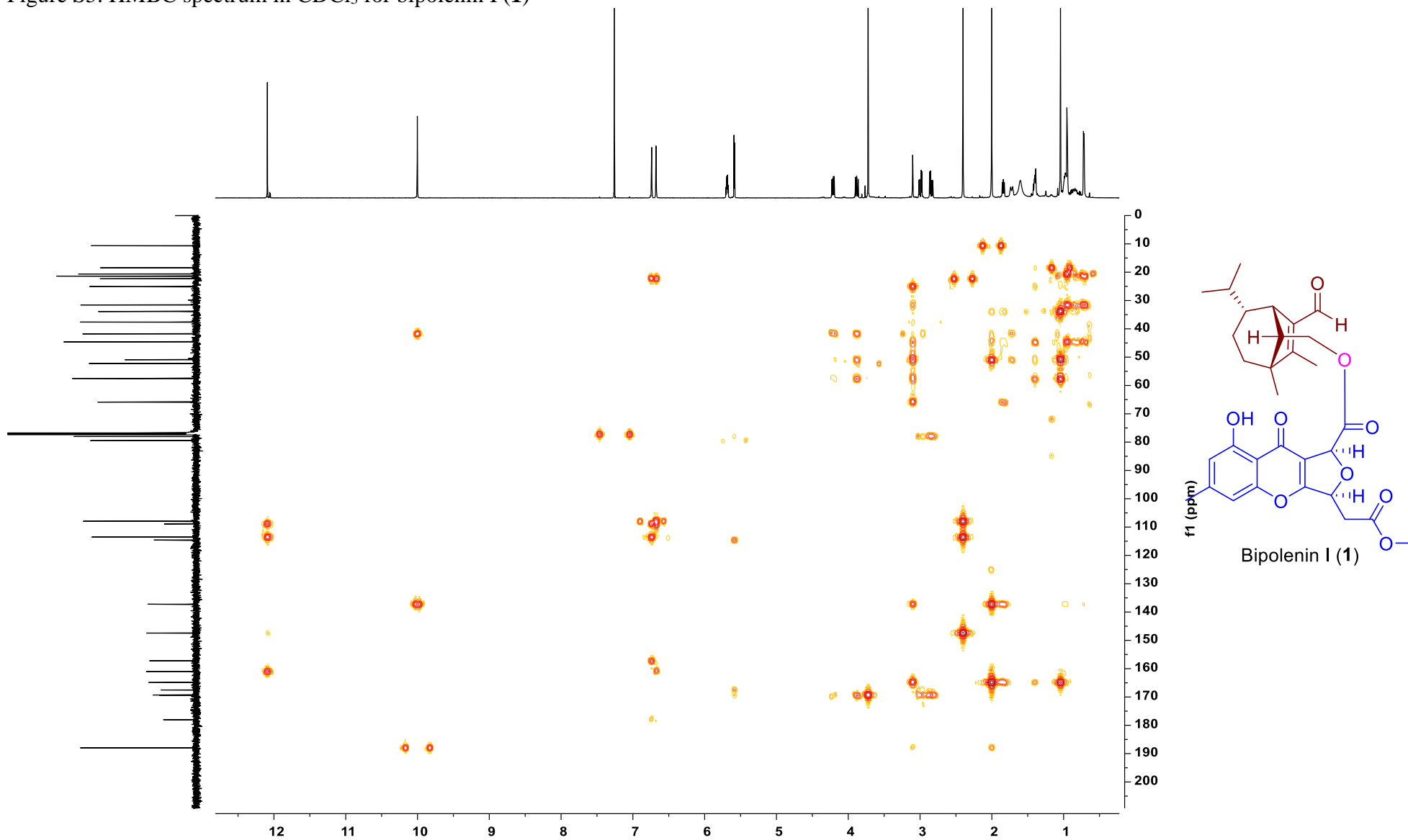


Figure S6. ROESY spectrum in CDCl₃ for bipolenin I (**1**)

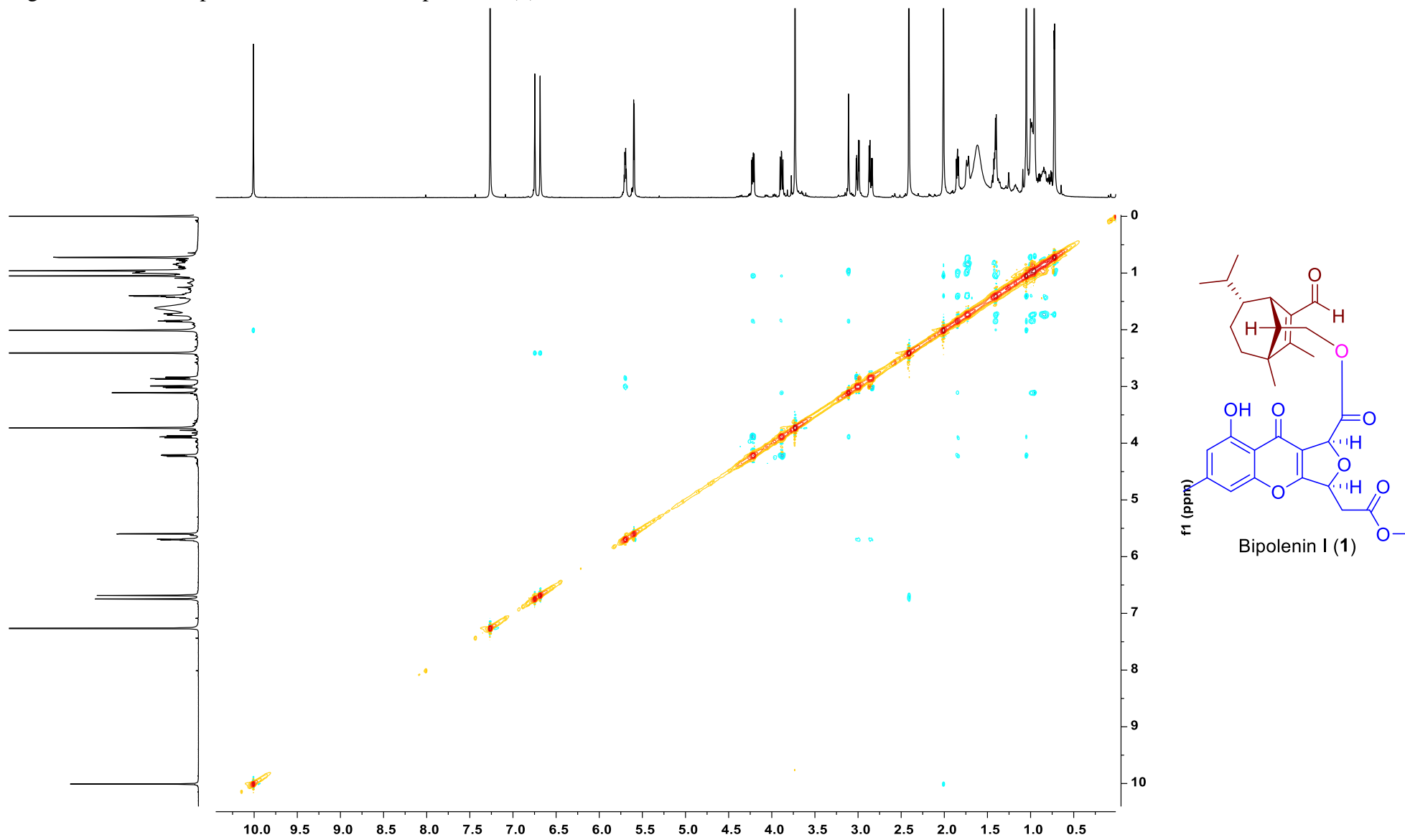


Figure S7. HRESIMS for bipolenin I (1)

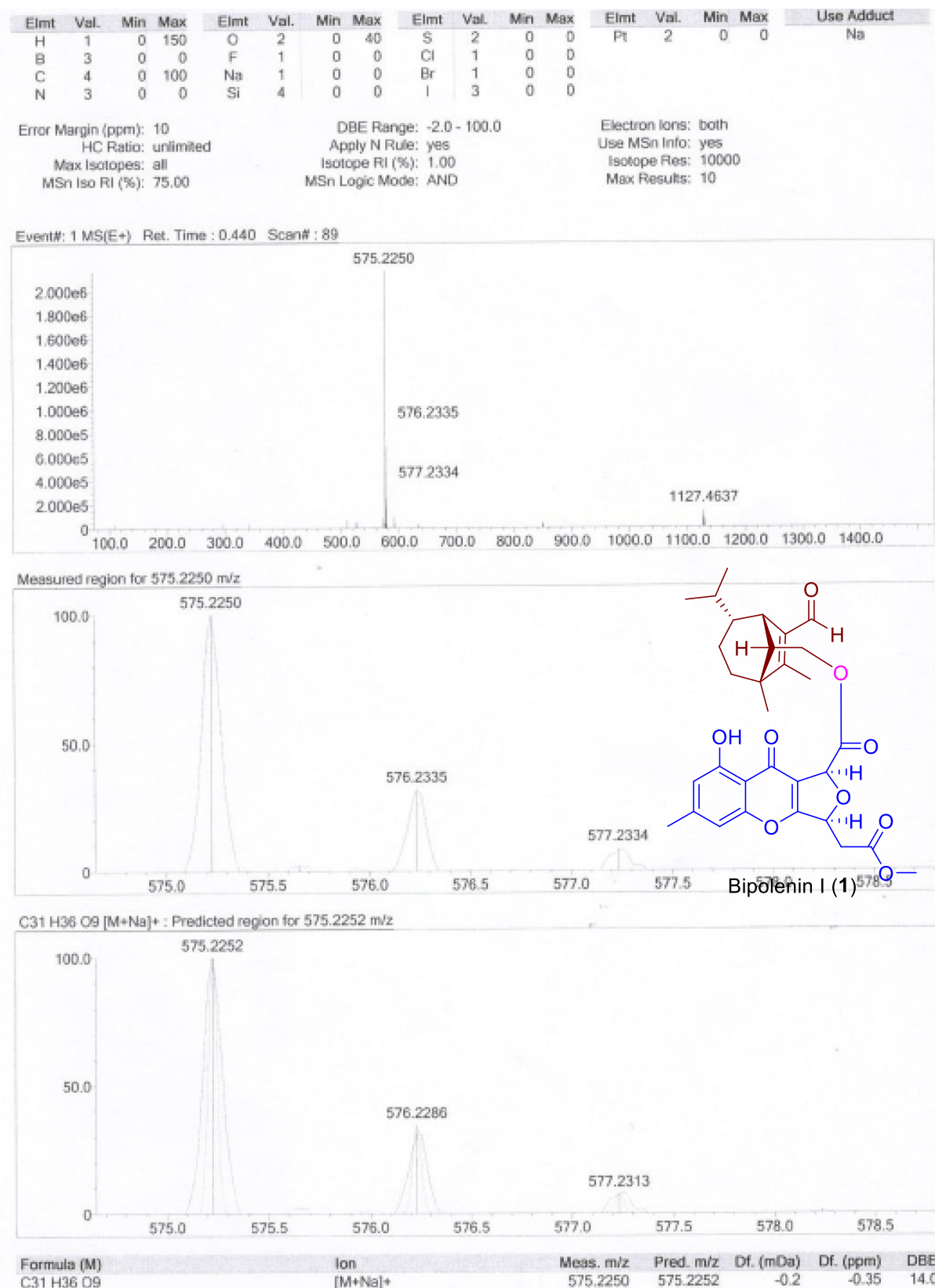


Figure S8. ^1H NMR spectrum in CDCl_3 for bipolenin J (**2**)

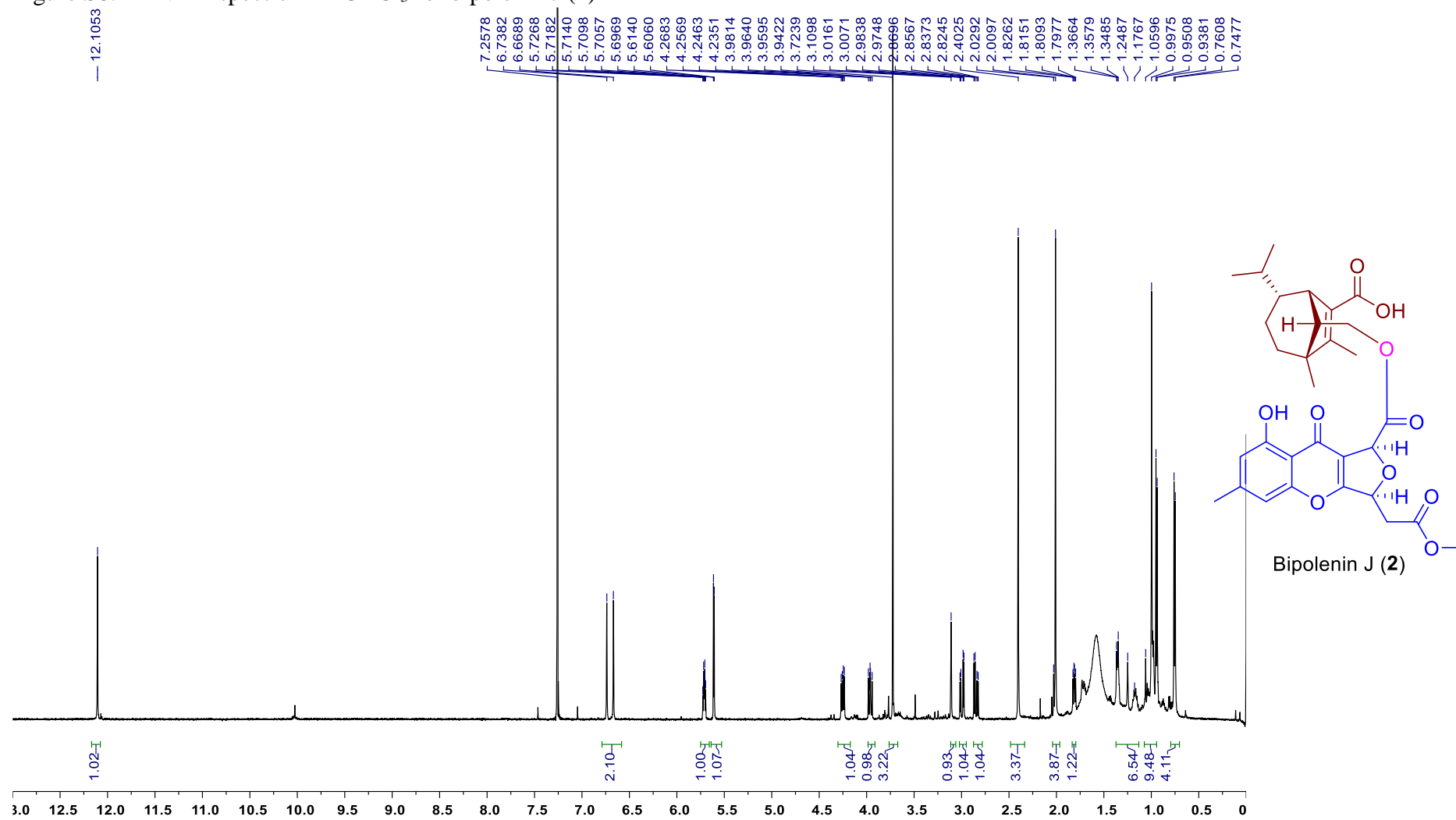


Figure S9. ^{13}C NMR spectrum in CDCl_3 for bipolenin J (2)

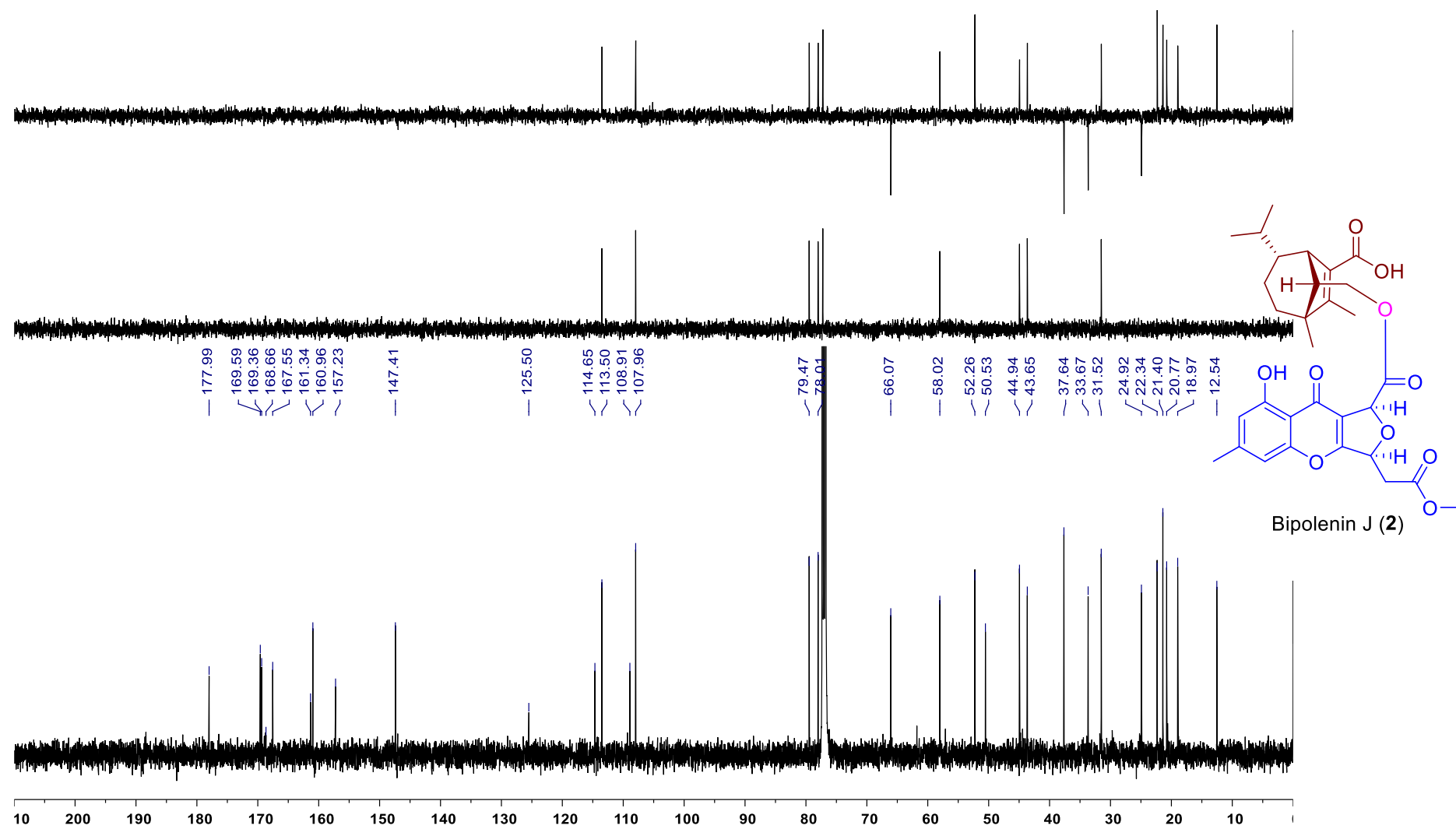


Figure S10. ^1H - ^1H COSY spectrum in CDCl_3 for bipolenin J (**2**)

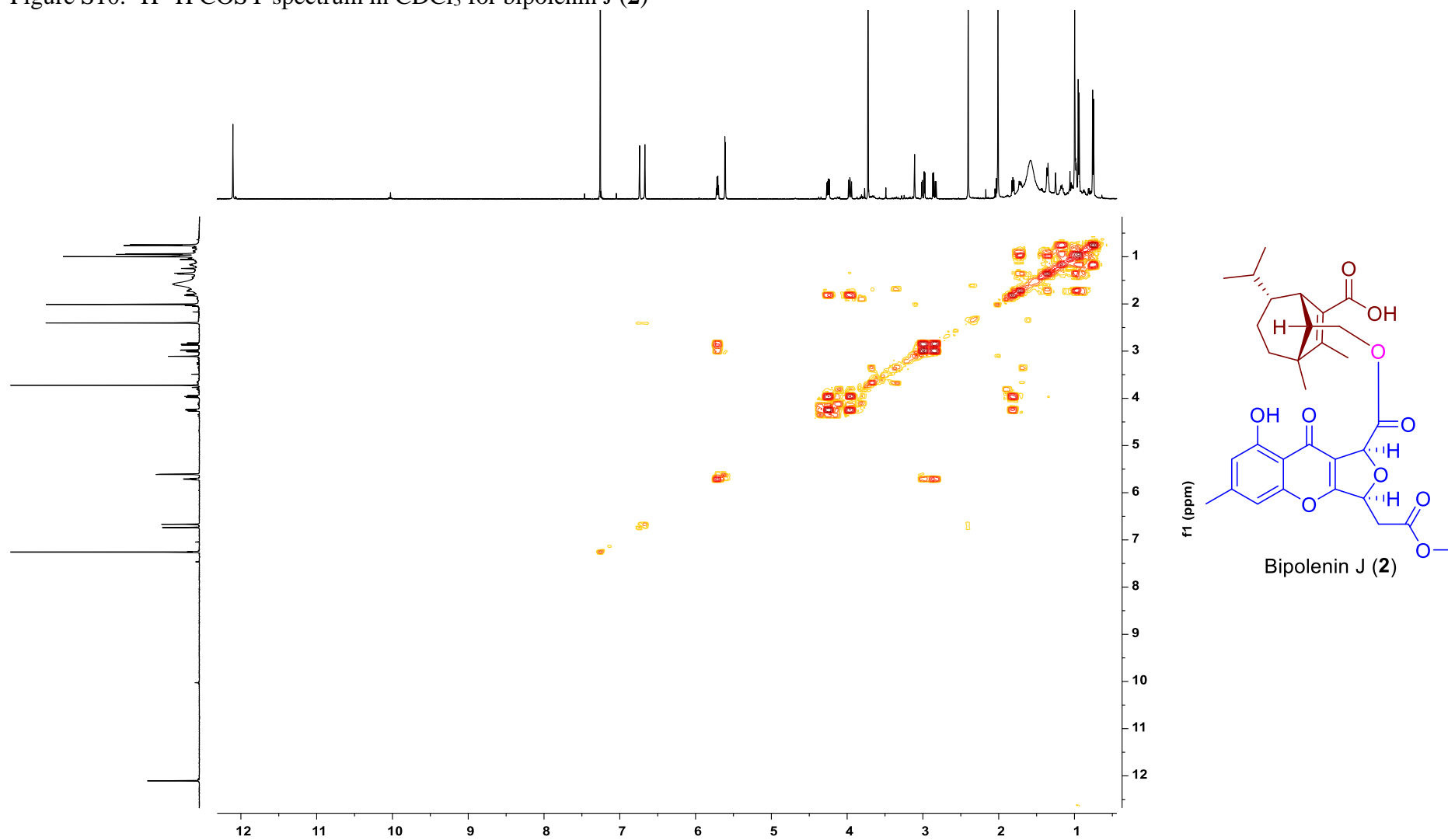


Figure S11. HSQC spectrum in CDCl₃ for bipolenin J (**2**)

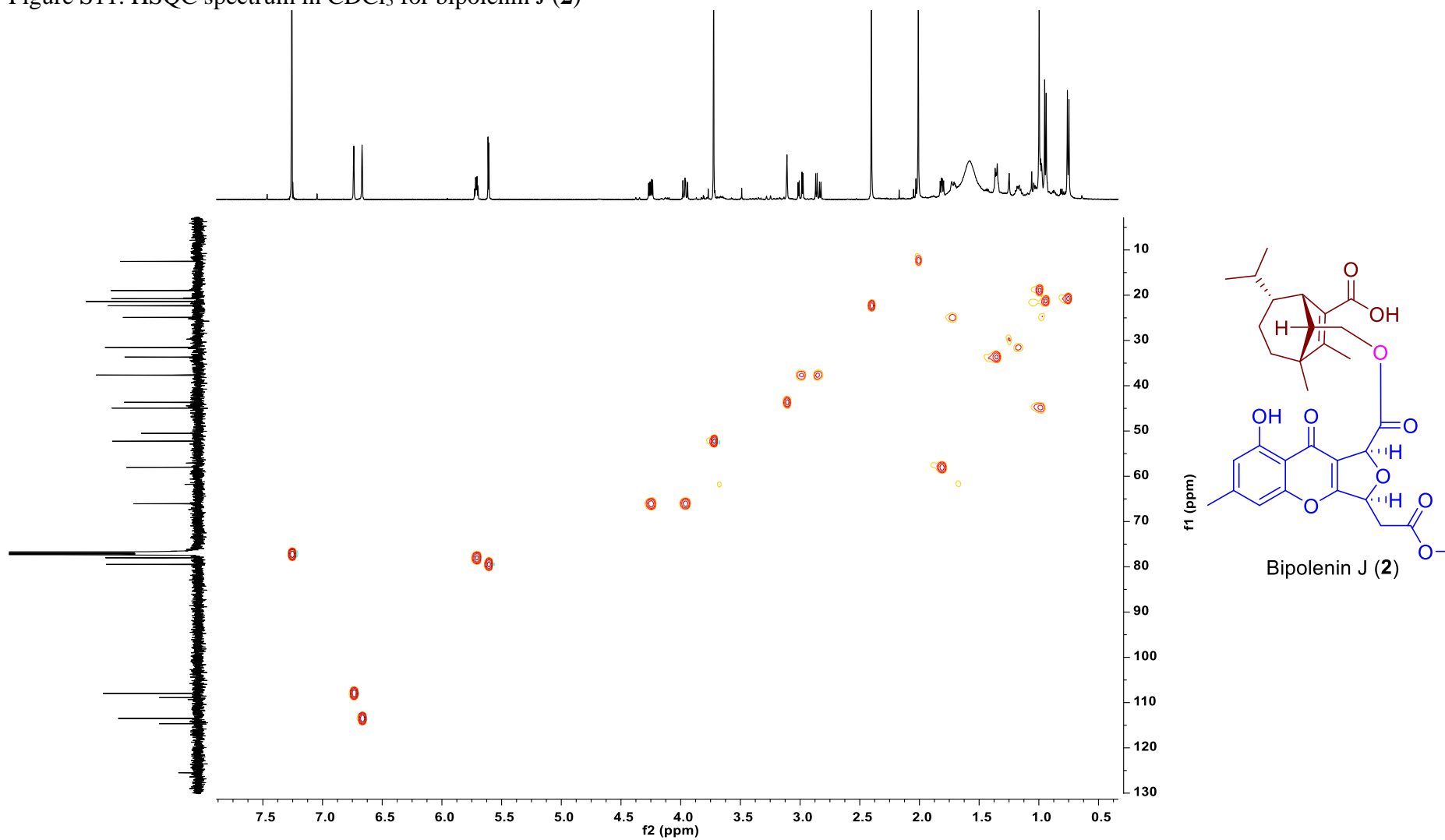


Figure S12. HMBC spectrum in CDCl₃ for bipolenin J (2)

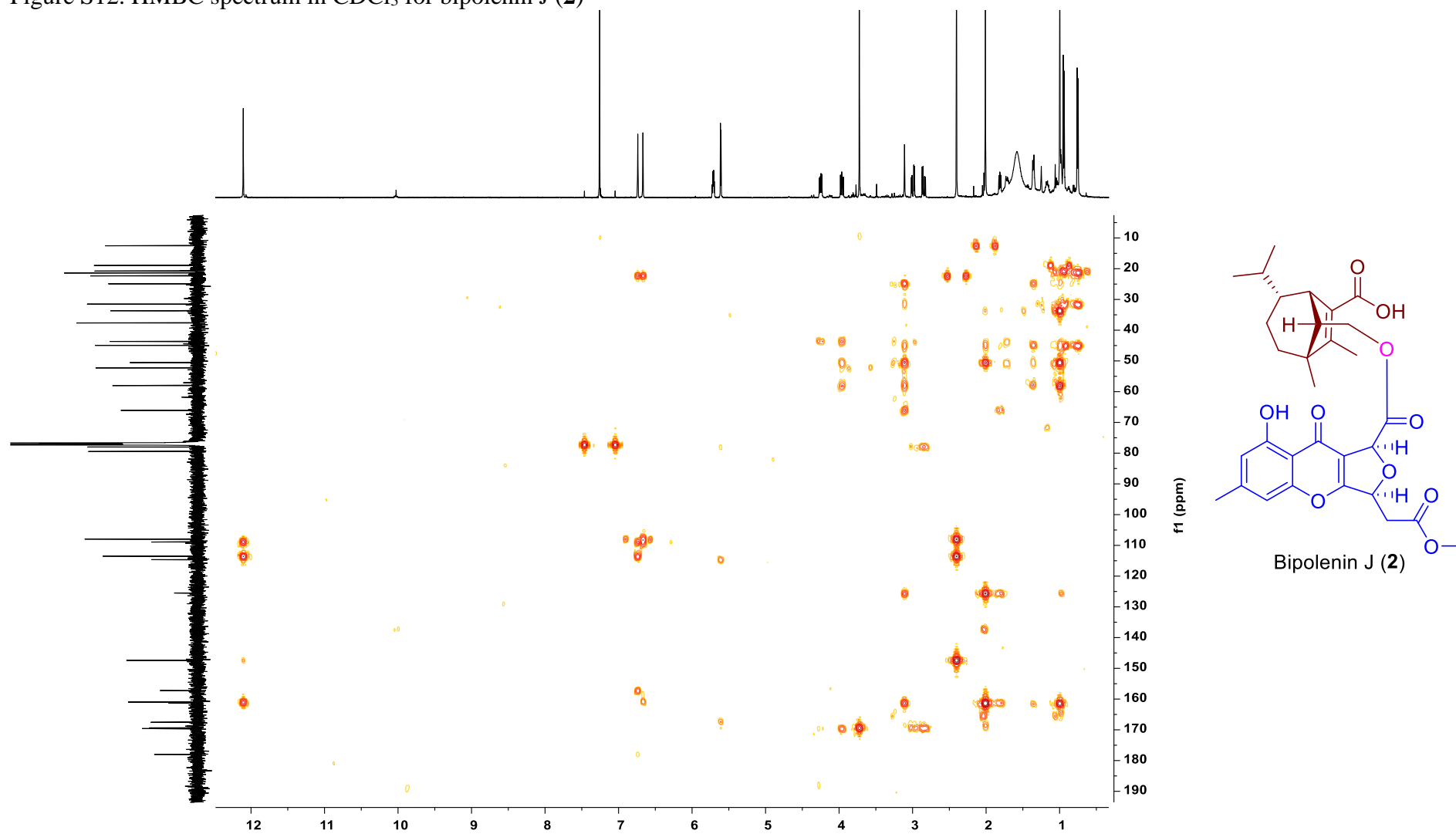


Figure S13. ROESY spectrum in CDCl₃ for bipolenin J (2)

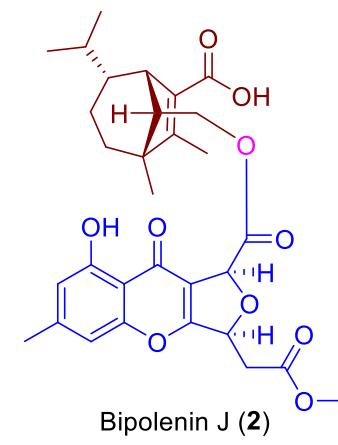
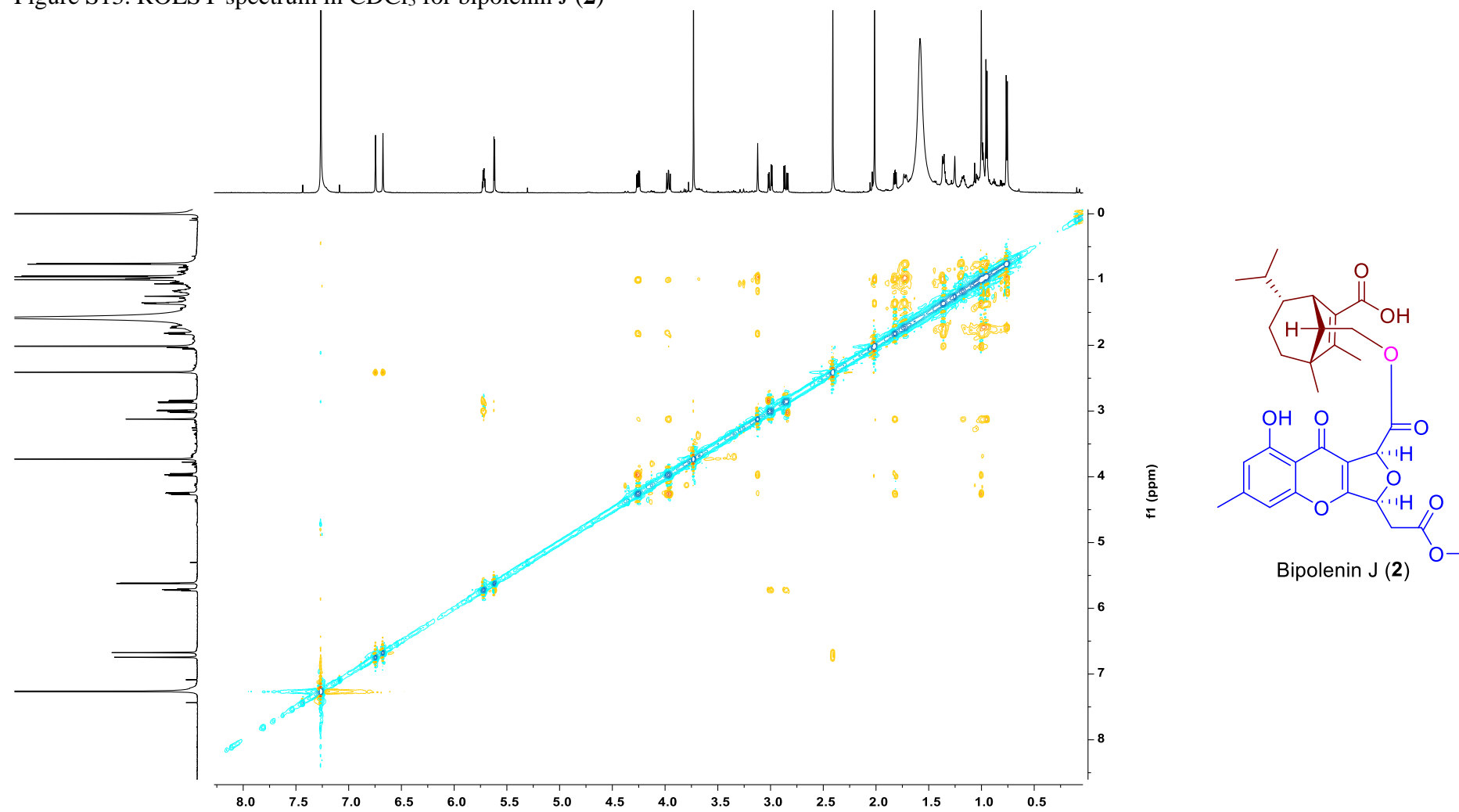


Figure S14. HRESIMS spectrum for bipolenin J (2)

