

APPENDIX

Table S1 Effect of Scrophulariae Radix Extract on Liver Index of Acute Liver Injury Induced by CCL4 ($\bar{x} \pm s$, n=8)

Groups	Dose (g/kg)	Liver index (%)
Control group	—	3.04±0.10
CCL4 model group	—	4.46±0.41 ^{▲▲}
Full composition group	1.35	3.99±0.32 [★]

Note: the CCL4 model group vs control group, [▲]P<0.05, ^{▲▲}P<0.01; the Full composition group vs CCL4 model group, [★]P<0.05, ^{★★}P<0.01.

Table S2 Effects of Scrophulariae Radix Extract on serum ALT and AST in rats with acute liver injury induced by CCL4 ($\bar{x} \pm s$, n=8)

Groups	Dose (g/kg)	ALT(U/L)	AST(U/L)
Control group	—	12.20±1.98	91.93±23.56
CCL4 model group	—	570.11±83.17 ^{▲▲}	1071.32±160.76 ^{▲▲}
Full composition group	1.35	245.23±65.43 ^{★★}	418.39±93.52 ^{★★}

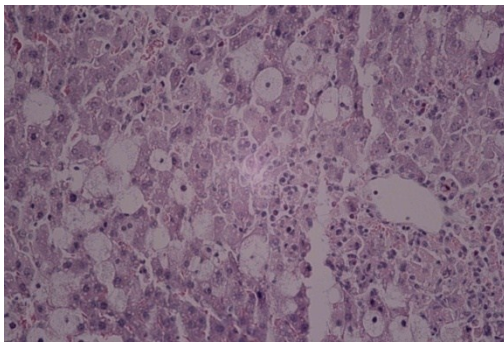
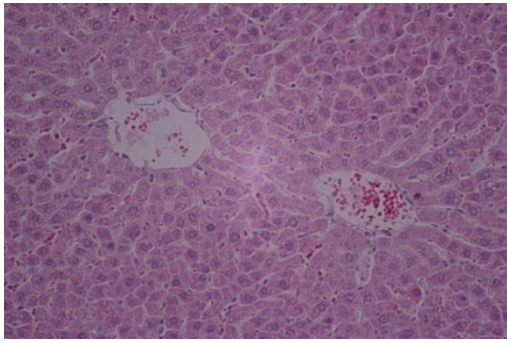
Note: the CCL4 model group vs control group, [▲]P<0.05, ^{▲▲}P<0.01; the Full composition group vs CCL4 model group, [★]P<0.05, ^{★★}P<0.01.

Table S3 Effects of aqueous extract of Scrophulariae on SOD, GSH-Px activity and MDA content in rats with acute liver injury induced by CCL4 ($\bar{x} \pm s$, n=8)

Groups	Dose (g/kg)	SOD(U/mg)	GSH-Px	MDA(nmol/mg)
Control group	—	126.65±13.56	347.12±55.70	0.81±0.36
CCL4 model group	—	71.33±12.50 ^{▲▲}	265.62±62.30 [▲]	1.87±0.32 ^{▲▲}
Full composition group	1.35	106.55±16.65 ^{★★}	327.33±44.46 [★]	1.59±0.27

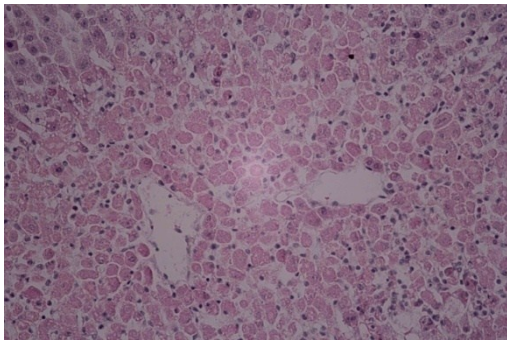
Note: the CCL4 model group vs control group, [▲]P<0.05, ^{▲▲}P<0.01; the Full composition group vs CCL4 model group, [★]P<0.05, ^{★★}P<0.01.

Pathological study of rat liver tissue



(A2) Control group HE×400

(B2) CCL4 model group HE×400



(C2) Full composition group HE×400

Fig. S1 Effect of aqueous extract of Scrophulariae on liver histopathology in rats with acute liver injury