

Accelerated Biodegradation of PLA/PHB-blended Nonwovens by a Microbial Community

Yalan Liu ^a, Zhicheng Zhan^b, Haixian Ye^b, Xiaoshan Lin^a, Yurong Yan^{b,#}, Yi Zhang ^{a,#}

^a School of Biology and Biological Engineering, South China University of Technology, Guangzhou
510006, China

^b School of Materials Science and Engineering, South China University of Technology, Guangzhou
510641, China

Corresponding author:

Yurong Yan, E-mail: yryan@scut.edu.cn, Tel: +86-20-87113644, Fax: +86-20-22236883

Yi Zhang, E-mail: byzhang@scut.edu.cn, Tel: +86-20-39380602, Fax: +86-20-39380601

SUPPORTING INFORMATION:

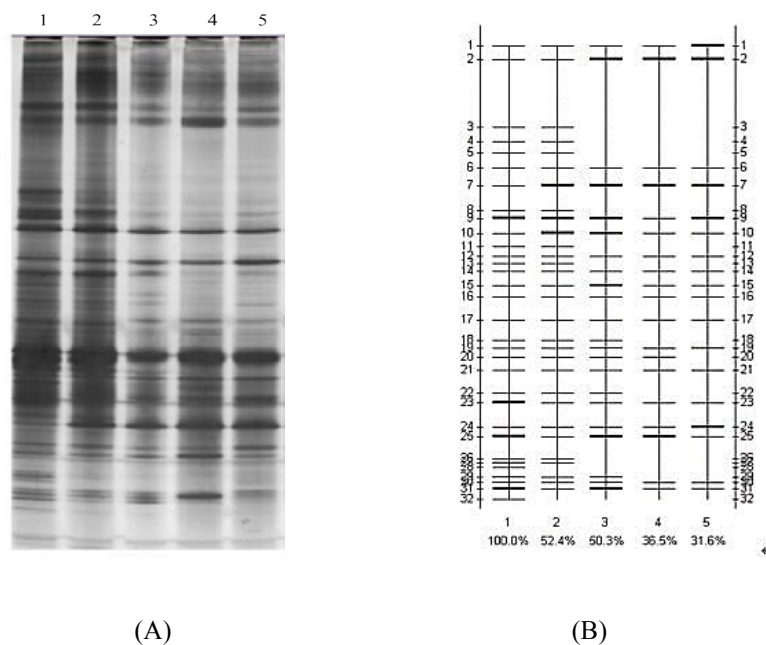


Fig. S1 DGGE electrophoresis pattern (A) of different subculture bacteria samples and the analysis diagram (B) with Quantity One software

Table S1 DSC values in the similarity matrix calculated from Quantity One software (%)

Lane	I	II	III	IV	V
I	100.0	52.4	50.3	36.5	31.6
II	52.4	100.0	65.3	47.6	42.3
III	50.3	65.3	100	69.7	65.8
IV	36.5	47.6	69.7	100	77.8
V	31.6	42.3	65.8	77.8	100

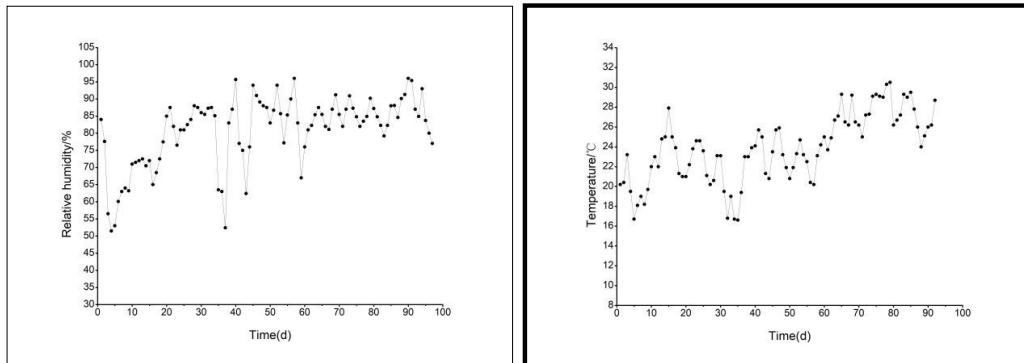


Figure S1 The average temperature and relativity humidity during testing time

(Data sources : Guangzhou Panyu meteorological observatory).