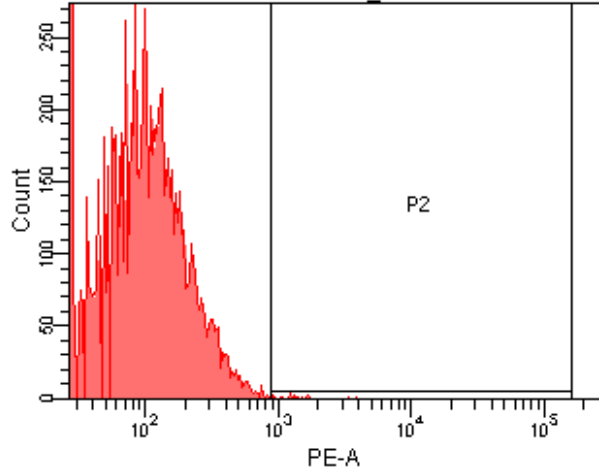
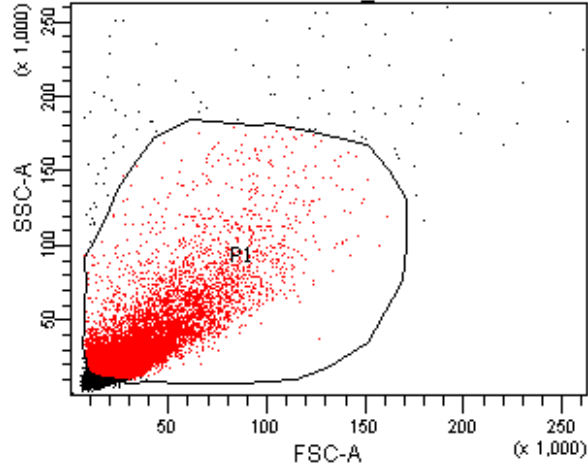


Blank			
Population	#Events	%Parent	%Total
<span style="display:inline-block; width:10px; height:10px; background-color:black;"></span> All Events	13,234	####	100.0
<span style="display:inline-block; width:10px; height:10px; background-color:red;"></span> P1	10,000	75.6	75.6
<span style="display:inline-block; width:10px; height:10px; border:1px solid black; border-style:dashed;"></span> P2	7	0.1	0.1

Blank			
Population	#Events	%Parent	PE-A Mean
<span style="display:inline-block; width:10px; height:10px; background-color:black;"></span> All Events	13,234	####	57
<span style="display:inline-block; width:10px; height:10px; background-color:red;"></span> P1	10,000	75.6	63
<span style="display:inline-block; width:10px; height:10px; border:1px solid black; border-style:dashed;"></span> P2	7	0.1	1,397

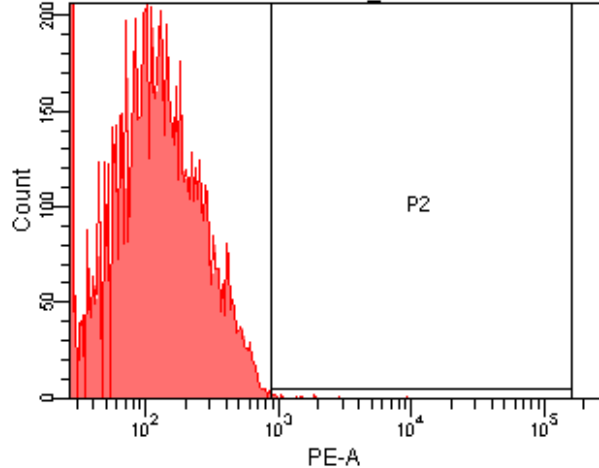
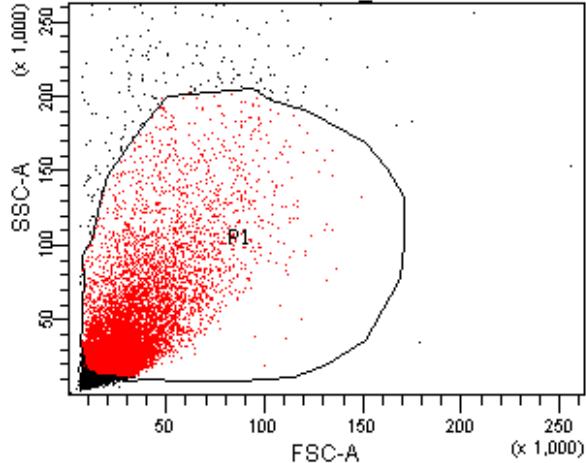


PS HSPs MHCII isotype

Population	#Events	%Parent	%Total
All Events	12,749	####	100.0
P1	10,000	78.4	78.4
P2	22	0.2	0.2

PS HSPs MHCII isotype

Population	#Events	%Parent	PE-A Mean
All Events	12,749	####	109
P1	10,000	78.4	116
P2	22	0.2	1,436

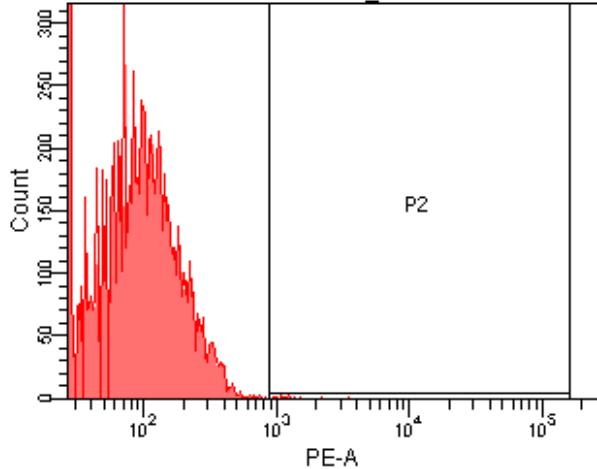
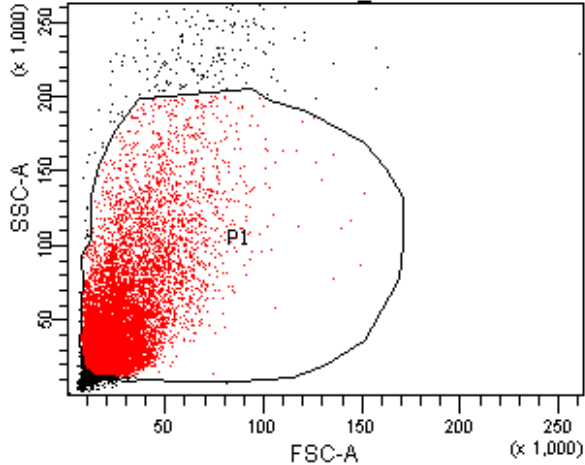


PS HSPs@glucan MHCII isotype

Population	#Events	%Parent	%Total
All Events	12,116	####	100.0
P1	9,677	79.9	79.9
P2	18	0.2	0.1

PS HSPs@glucan MHCII isotype

Population	#Events	%Parent	PE-A Mean
All Events	12,116	####	148
P1	9,677	79.9	151
P2	18	0.2	1,695

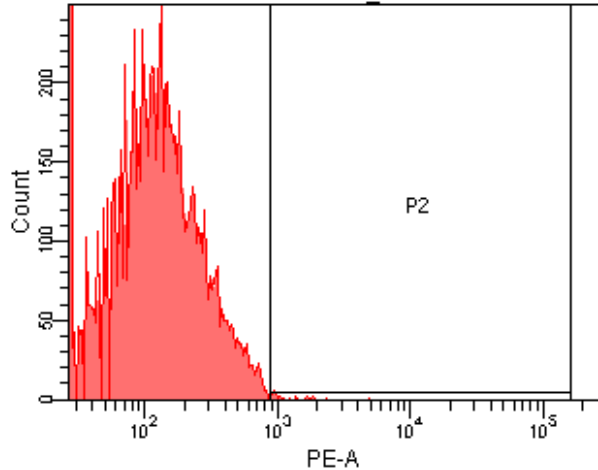
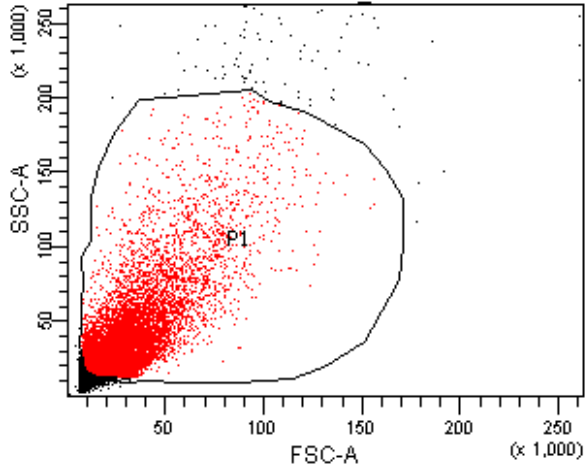


E. coli HSPs MHCII isotype

Population	#Events	%Parent	%Total
All Events	11,557	####	100.0
P1	10,011	86.6	86.6
P2	14	0.1	0.1

E. coli HSPs MHCII isotype

Population	#Events	%Parent	PE-A Mean
All Events	11,557	####	110
P1	10,011	86.6	104
P2	14	0.1	1,424

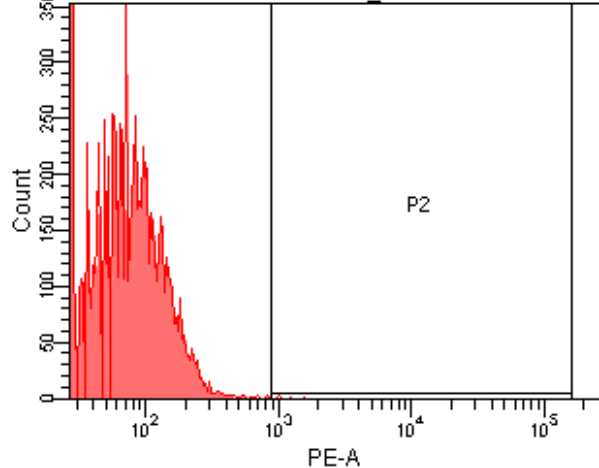
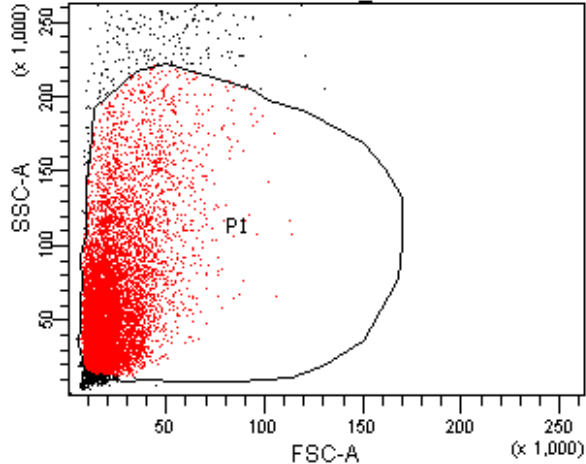


E. coli HSPs@glucan MHCII isotype

Population	#Events	%Parent	%Total
All Events	11,768	####	100.0
P1	10,000	85.0	85.0
P2	26	0.3	0.2

E. coli HSPs@glucan MHCII isotype

Population	#Events	%Parent	PE-A Mean
All Events	11,768	####	149
P1	10,000	85.0	154
P2	26	0.3	1,399

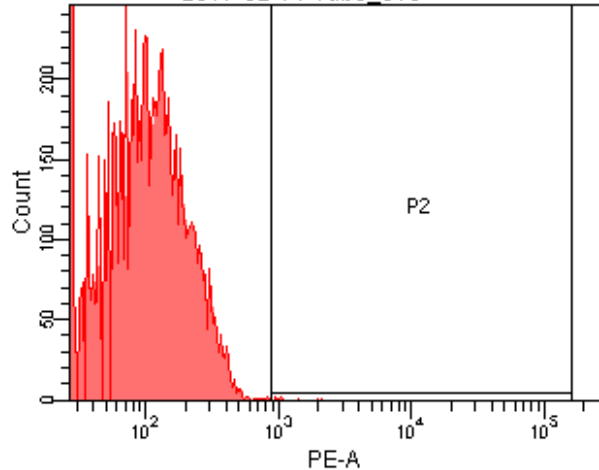
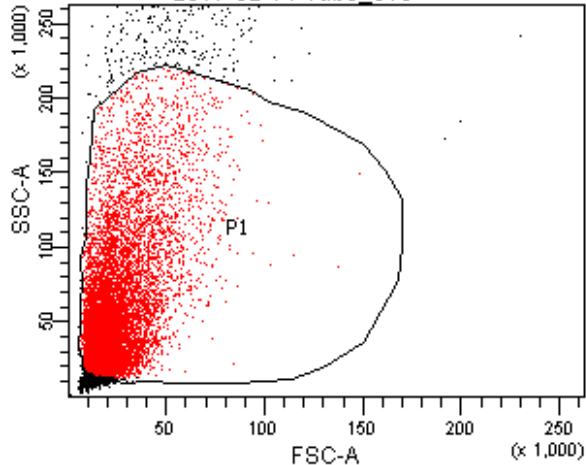


S. aureus HSPs MHCII isotype

Population	#Events	%Parent	%Total
All Events	11,003	####	100.0
P1	10,000	90.9	90.9
P2	5	0.0	0.0

S. aureus HSPs MHCII isotype

Population	#Events	%Parent	PE-A Mean
All Events	11,003	####	83
P1	10,000	90.9	74
P2	5	0.0	1,143

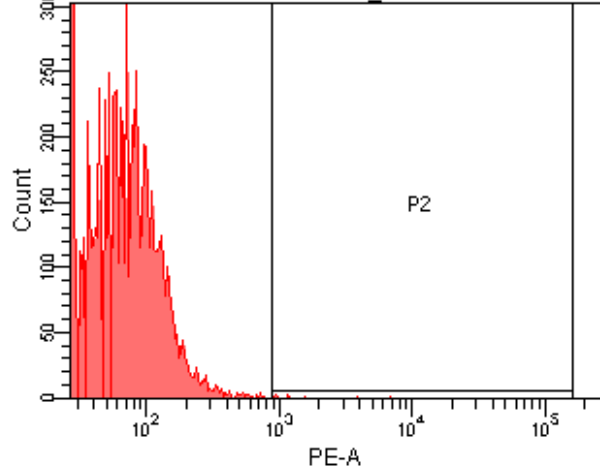
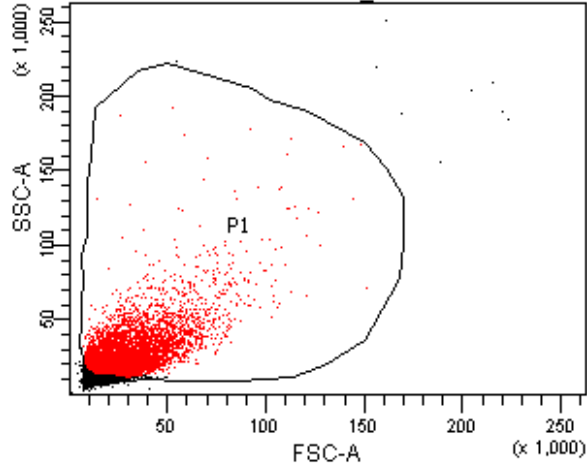


S. aureus HSPs@glucan MHCII isotype

Population	#Events	%Parent	%Total
All Events	11,431	####	100.0
P1	10,000	87.5	87.5
P2	9	0.1	0.1

S. aureus HSPs@glucan MHCI isotype

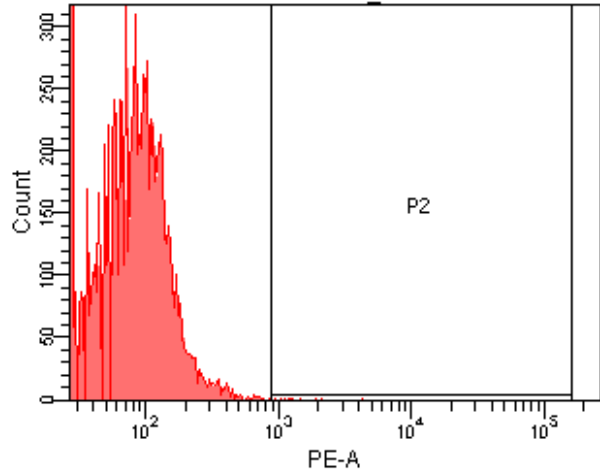
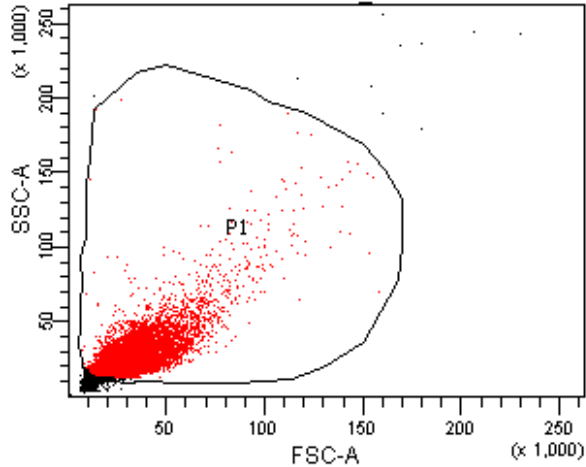
Population	#Events	%Parent	PE-A Mean
All Events	11,431	####	156
P1	10,000	87.5	115
P2	9	0.1	1,256



PBS MHCII isotype			
Population	#Events	%Parent	%Total
All Events	20,970	####	100.0
P1	10,000	47.7	47.7
P2	9	0.1	0.0

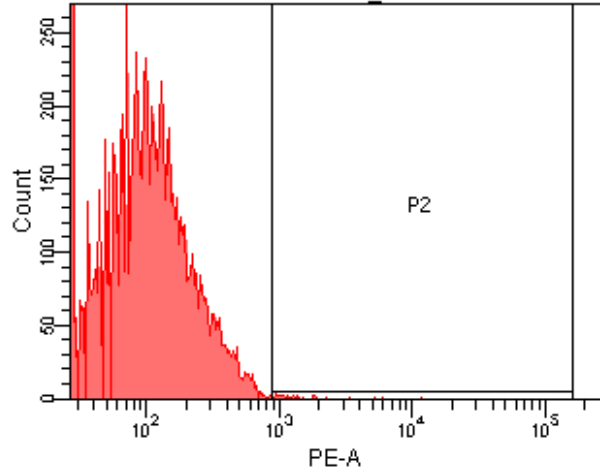
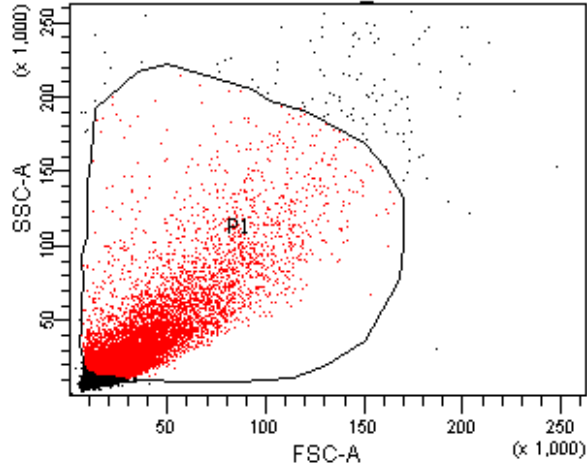
PBS MHCII isotype			
Population	#Events	%Parent	PE-A Mean
All Events	20,970	####	47
P1	10,000	47.7	64
P2	9	0.1	2,032





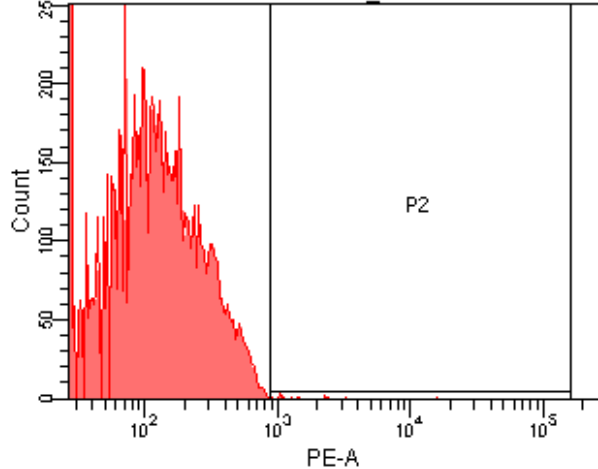
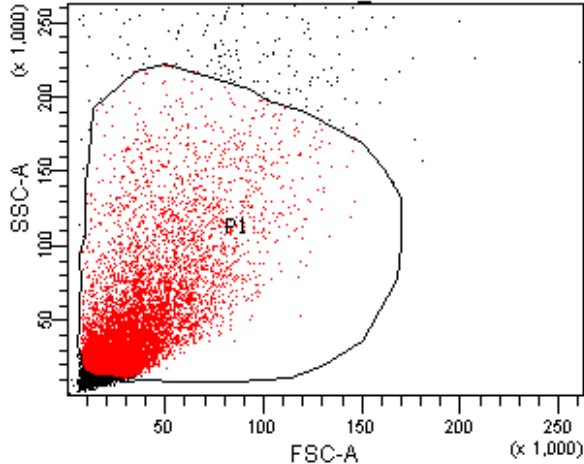
Population	LPS MHCII isotype		
	#Events	%Parent	%Total
All Events	10,784	###	100.0
P1	10,000	92.7	92.7
P2	10	0.1	0.1

Population	LPS MHCII isotype			PE-A
	#Events	%Parent		Mean
All Events	10,784	###		85
P1	10,000	92.7		86
P2	10	0.1		1,659



PS HSPs MHCII			
Population	#Events	%Parent	%Total
All Events	13,557	####	100.0
P1	10,000	73.8	73.8
P2	30	0.3	0.2

PS HSPs MHCII			PE-A
Population	#Events	%Parent	Mean
All Events	13,557	####	116
P1	10,000	73.8	124
P2	30	0.3	1,972

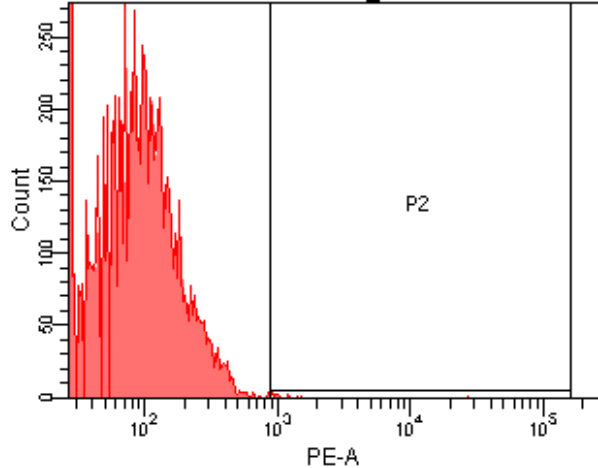
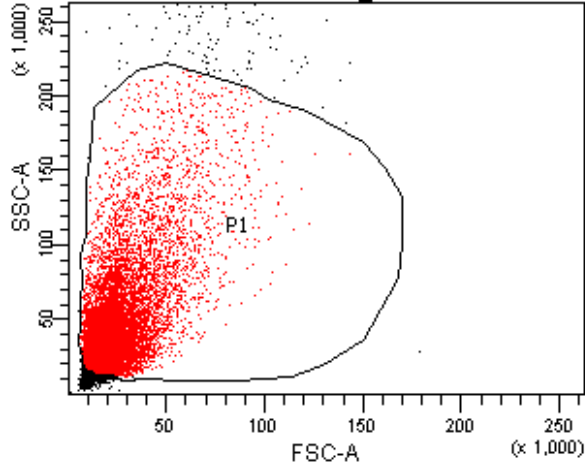


PS HSPs@glucan MHCII

Population	#Events	%Parent	%Total
■ All Events	12,684	####	100.0
■ P1	10,000	78.8	78.8
⊠ P2	17	0.2	0.1

PS HSPs@glucan MHCII

Population	#Events	%Parent	PE-A Mean
■ All Events	12,684	####	151
■ P1	10,000	78.8	151
⊠ P2	17	0.2	2,397

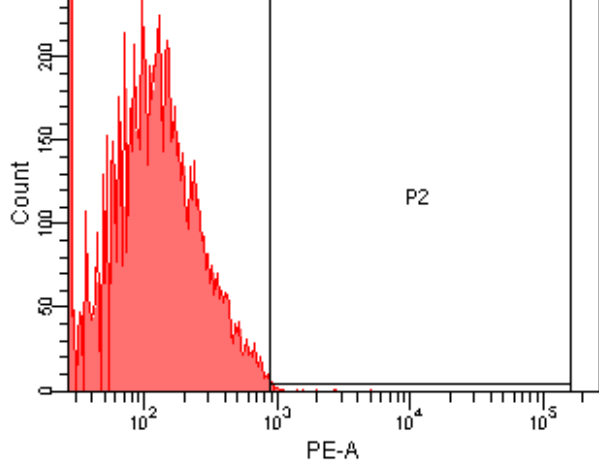
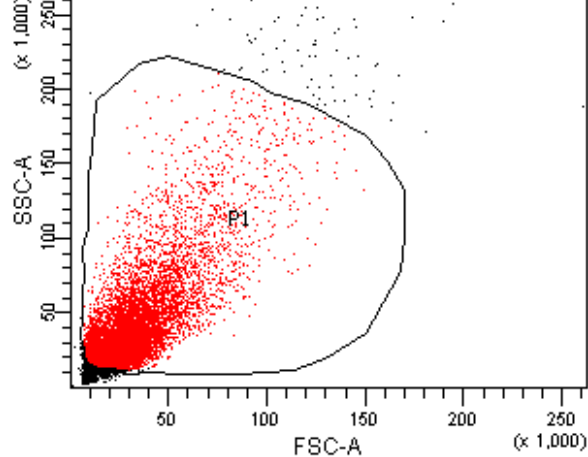


### E. coli HSPs MHCII

Population	#Events	%Parent	%Total
All Events	11,614	####	100.0
P1	10,000	86.1	86.1
P2	15	0.2	0.1

### E. coli HSPs MHCII

Population	#Events	%Parent	PE-A Mean
All Events	11,614	####	111
P1	10,000	86.1	102
P2	15	0.2	2,806

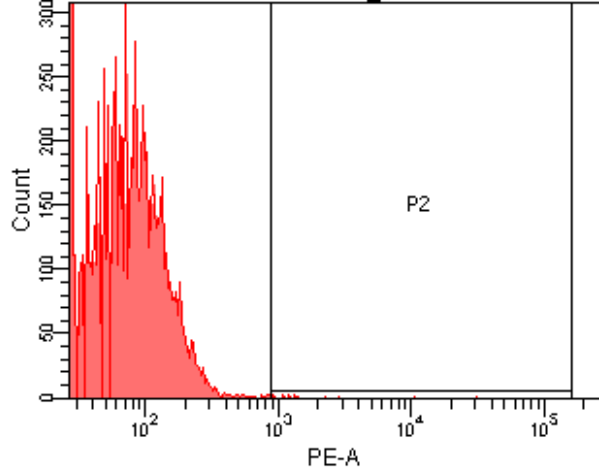
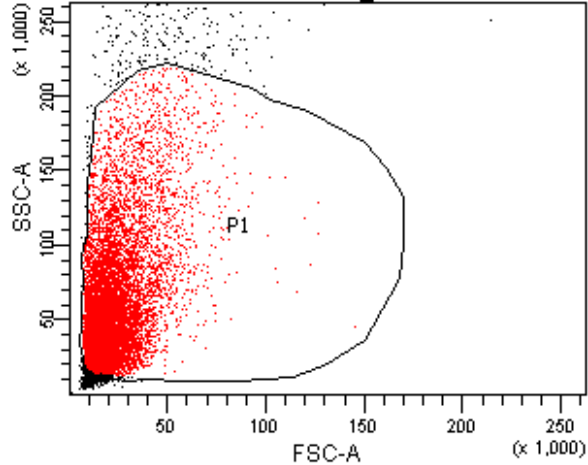


E. coli HSPs@glucan MHCII

Population	#Events	%Parent	%Total
■ All Events	12,041	####	100.0
■ P1	10,000	83.0	83.0
⊠ P2	21	0.2	0.2

E. coli HSPs@glucan MHCII

Population	#Events	%Parent	PE-A Mean
■ All Events	12,041	####	146
■ P1	10,000	83.0	153
⊠ P2	21	0.2	1,326

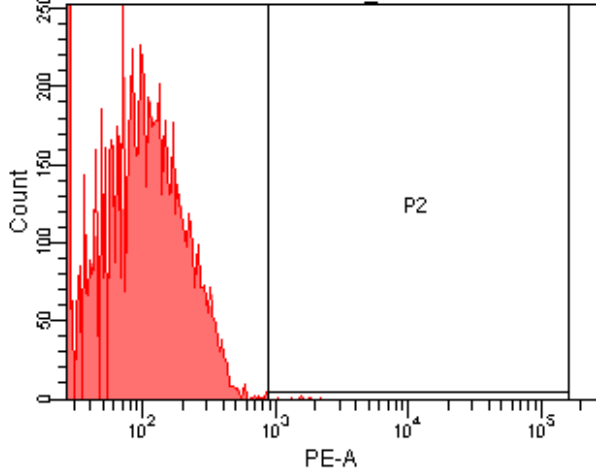
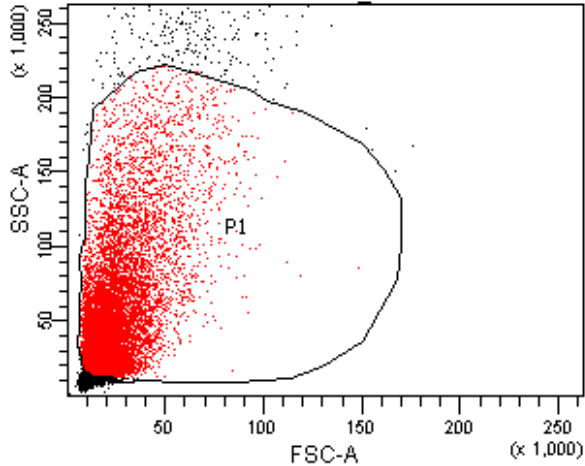


S. aureus HSPs MHCII

Population	#Events	%Parent	%Total
All Events	11,251	####	100.0
P1	10,000	88.9	88.9
P2	13	0.1	0.1

S. aureus HSPs MHCII

Population	#Events	%Parent	PE-A Mean
All Events	11,251	####	93
P1	10,000	88.9	79
P2	13	0.1	4,446

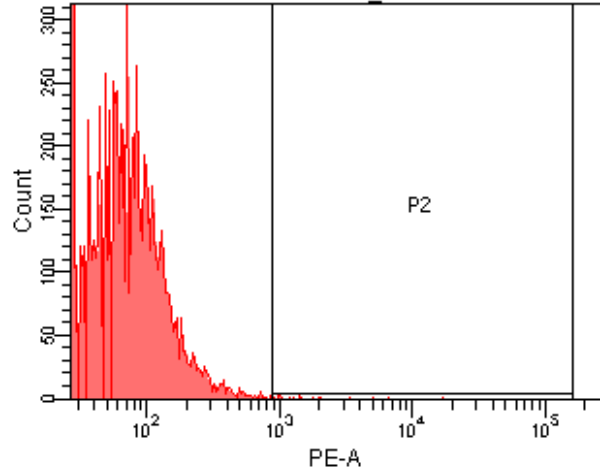
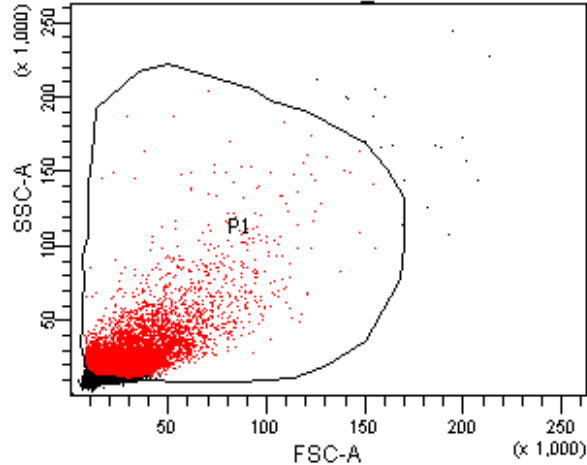


S. aureus HSPs@glucan MHCII

Population	#Events	%Parent	%Total
All Events	11,629	####	100.0
P1	10,000	86.0	86.0
P2	9	0.1	0.1

S. aureus HSPs@glucan MHCII

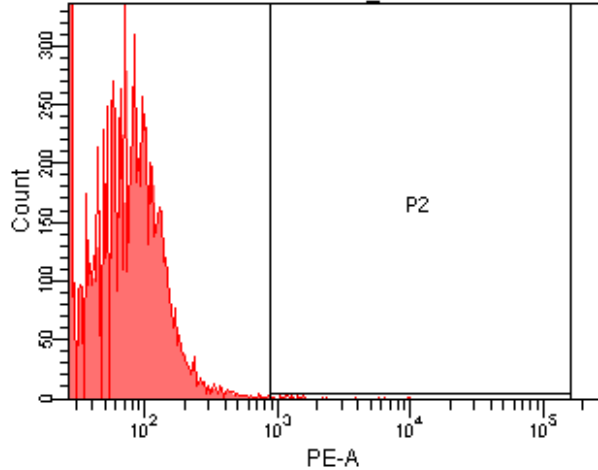
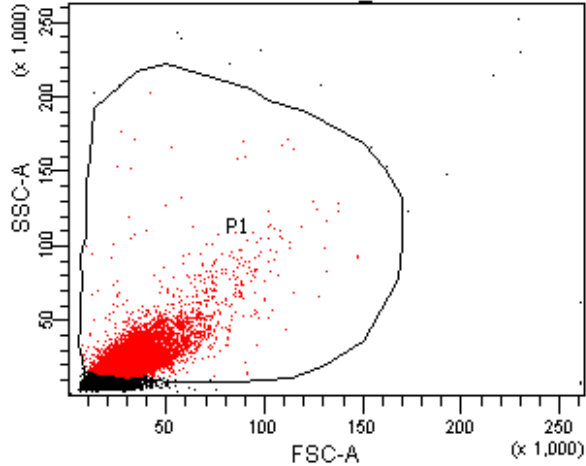
Population	#Events	%Parent	PE-A Mean
All Events	11,629	####	144
P1	10,000	86.0	116
P2	9	0.1	1,531



PBS MHCII			
Population	#Events	%Parent	%Total
■ All Events	15,611	####	100.0
■ P1	10,000	64.1	64.1
☒ P2	16	0.2	0.1

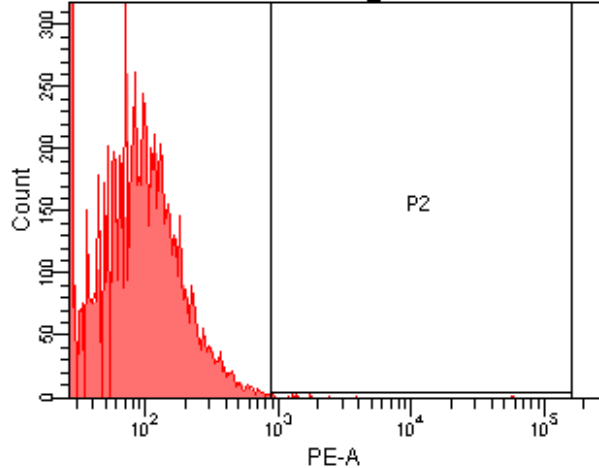
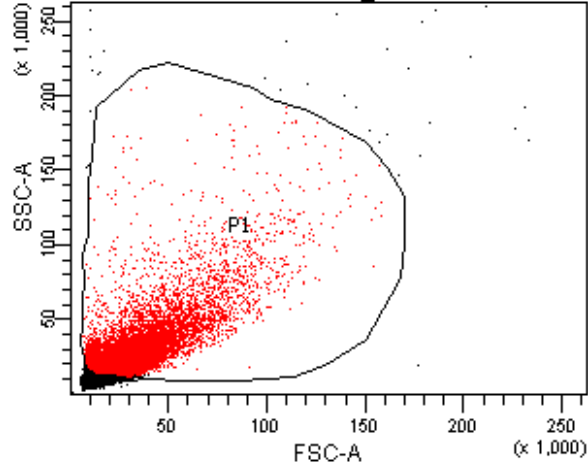
PBS MHCII			
Population	#Events	%Parent	PE-A Mean
■ All Events	15,611	####	61
■ P1	10,000	64.1	74
☒ P2	16	0.2	3,003





LPS MHCII			
Population	#Events	%Parent	%Total
All Events	13,945	####	100.0
P1	10,000	71.7	71.7
P2	27	0.3	0.2

LPS MHCII			
Population	#Events	%Parent	PE-A Mean
All Events	13,945	####	76
P1	10,000	71.7	82
P2	27	0.3	2,400

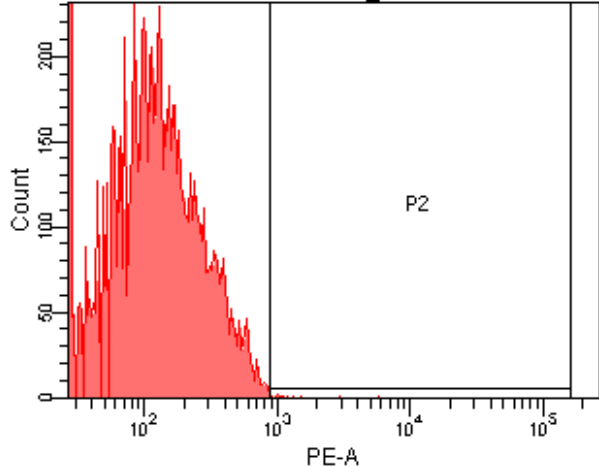
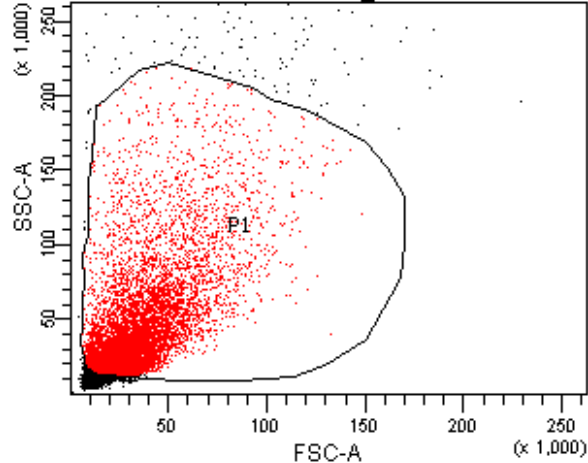


PS HSPs CD40 isotype

Population	#Events	%Parent	%Total
All Events	13,696	####	100.0
P1	10,000	73.0	73.0
P2	18	0.2	0.1

PS HSPs CD40 isotype

Population	#Events	%Parent	PE-A Mean
All Events	13,696	####	97
P1	10,000	73.0	113
P2	18	0.2	4,639

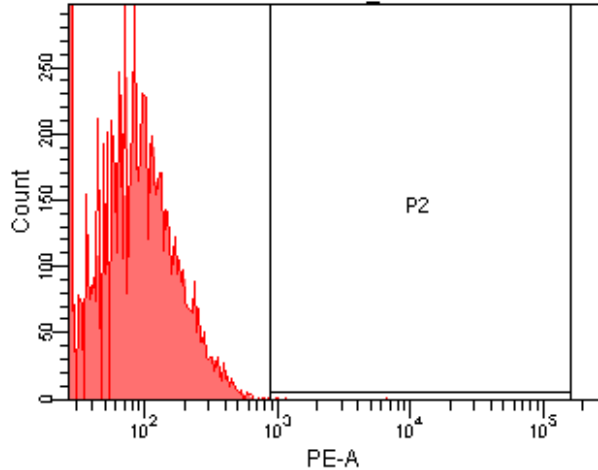
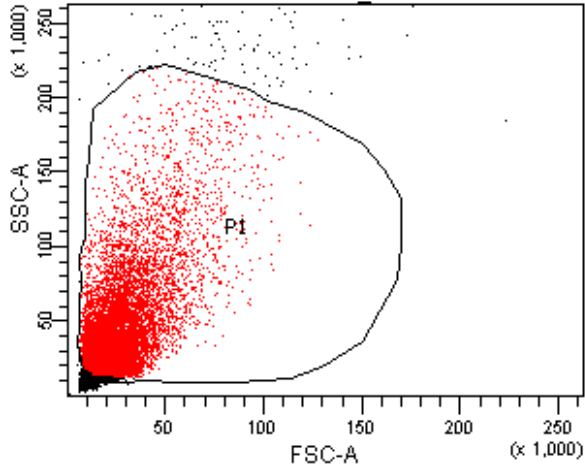


PS HSPs@glucan CD40 isotype

Population	#Events	%Parent	%Total
■ All Events	12,498	####	100.0
■ P1	10,000	80.0	80.0
⊠ P2	15	0.2	0.1

PS HSPs@glucan CD40 isotype

Population	#Events	%Parent	PE-A Mean
■ All Events	12,498	####	145
■ P1	10,000	80.0	152
⊠ P2	15	0.2	1,487

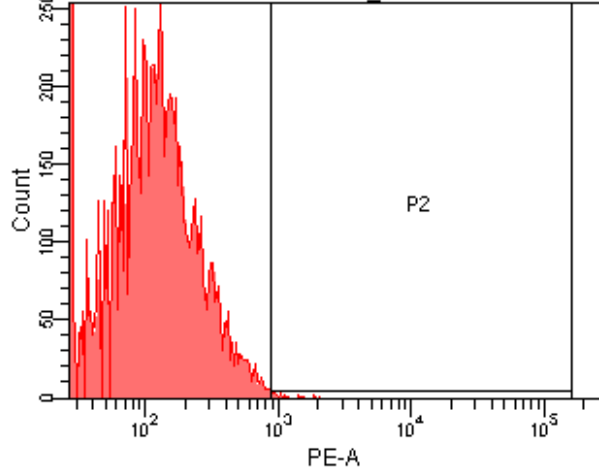
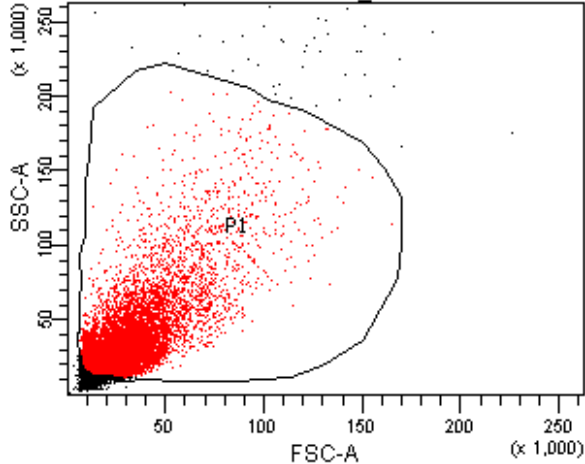


E. coli HSPs CD40 isotype

Population	#Events	%Parent	%Total
All Events	11,639	####	100.0
P1	10,000	85.9	85.9
P2	3	0.0	0.0

E. coli HSPs CD40 isotype

Population	#Events	%Parent	PE-A Mean
All Events	11,639	####	97
P1	10,000	85.9	97
P2	3	0.0	2,918

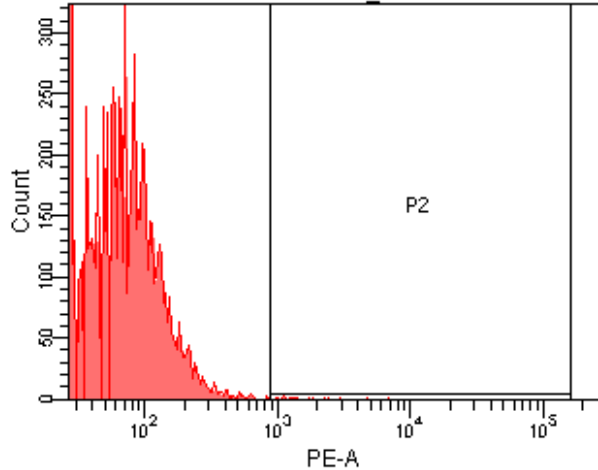
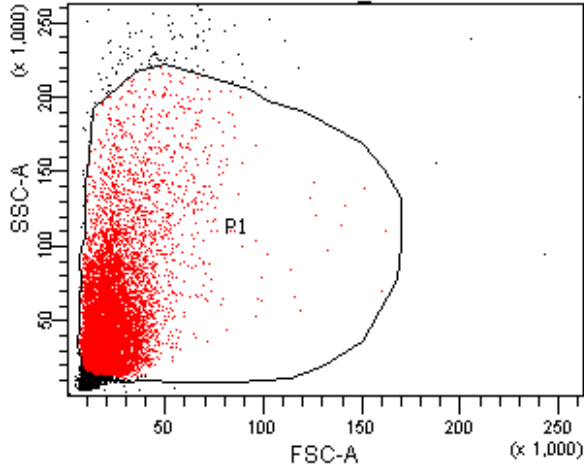


E. coli HSPs@glucan CD40 isotype

Population	#Events	%Parent	%Total
■ All Events	11,920	####	100.0
■ P1	10,000	83.9	83.9
⊠ P2	25	0.2	0.2

E. coli HSPs@glucan CD40 isotype

Population	#Events	%Parent	PE-A Mean
■ All Events	11,920	####	136
■ P1	10,000	83.9	145
⊠ P2	25	0.2	1,170

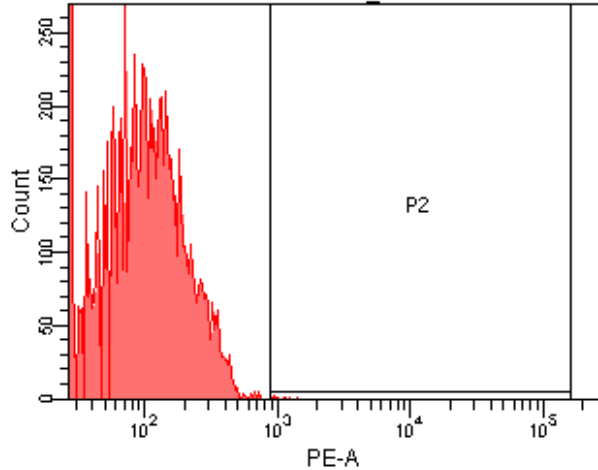
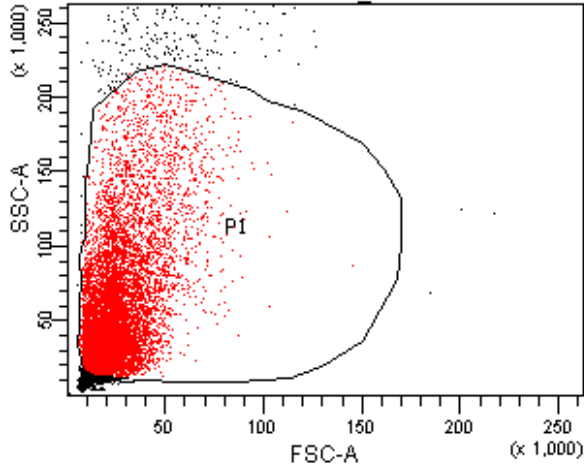


S. aureus HSPs CD40 isotype

Population	#Events	%Parent	%Total
All Events	11,440	###	100.0
P1	10,000	87.4	87.4
P2	17	0.2	0.1

S. aureus HSPs CD40 isotype

Population	#Events	%Parent	PE-A Mean
All Events	11,440	###	76
P1	10,000	87.4	70
P2	17	0.2	2,056

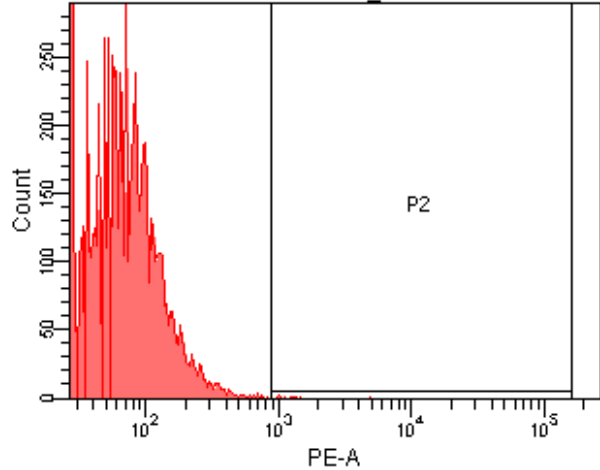
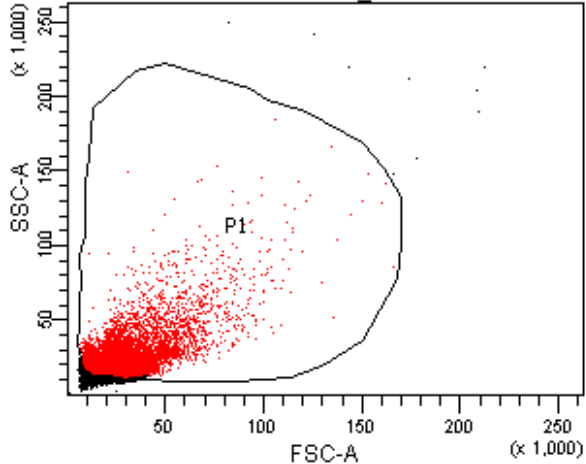


*S. aureus* HSPs@glucan CD40 isotype

Population	#Events	%Parent	%Total
All Events	11,412	####	100.0
P1	10,000	87.6	87.6
P2	9	0.1	0.1

*S. aureus* HSPs@glucan CD40 isotype

Population	#Events	%Parent	PE-A Mean
All Events	11,412	####	127
P1	10,000	87.6	114
P2	9	0.1	1,057



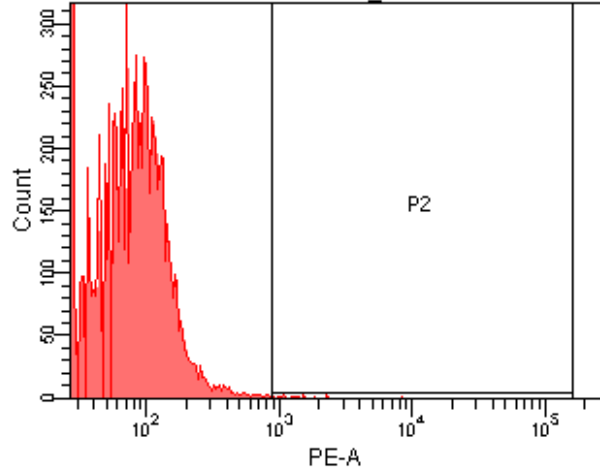
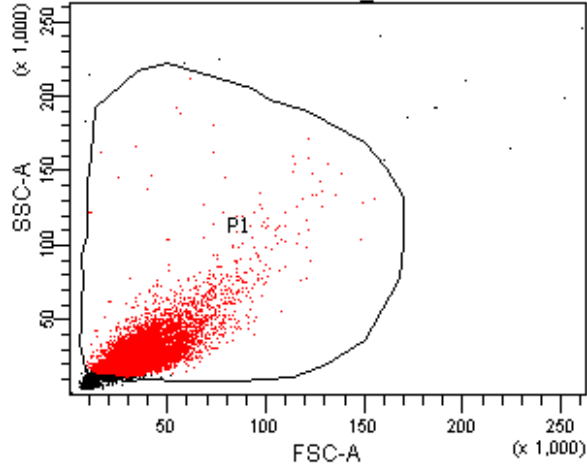
PBS CD40 isotype

Population	#Events	%Parent	%Total
All Events	16,622	####	100.0
P1	10,000	60.2	60.2
P2	11	0.1	0.1

PBS CD40 isotype

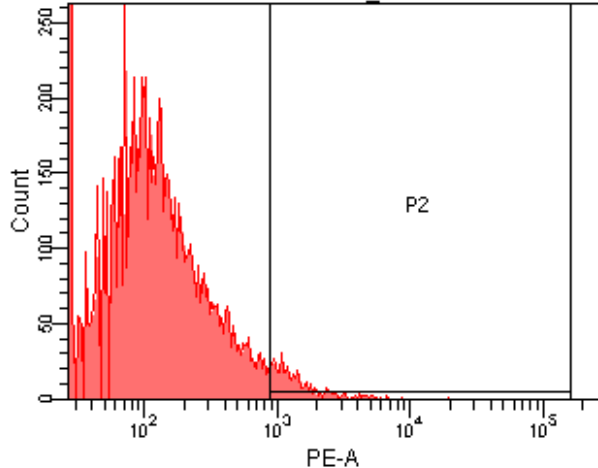
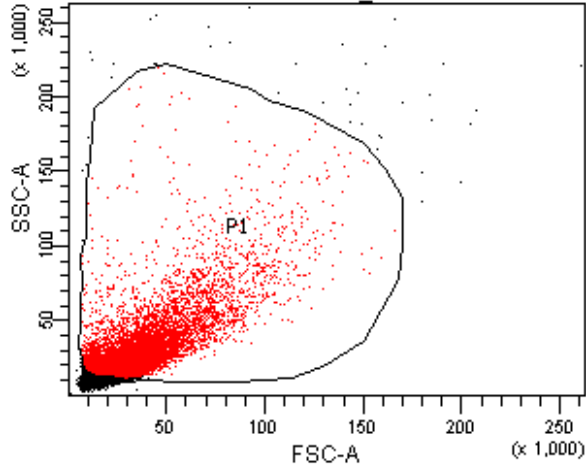
Population	#Events	%Parent	PE-A Mean
All Events	16,622	####	55
P1	10,000	60.2	65
P2	11	0.1	1,505





Population	LPS CD40 isotype		
	#Events	%Parent	%Total
All Events	10,768	###	100.0
P1	10,000	92.9	92.9
P2	18	0.2	0.2

Population	LPS CD40 isotype			PE-A
	#Events	%Parent		Mean
All Events	10,768	###		86
P1	10,000	92.9		84
P2	18	0.2		1,755

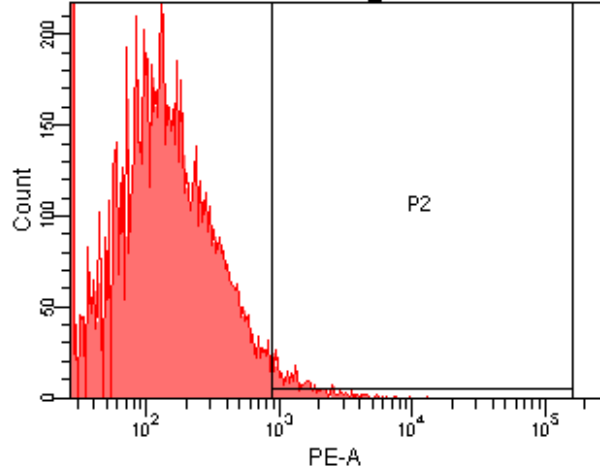
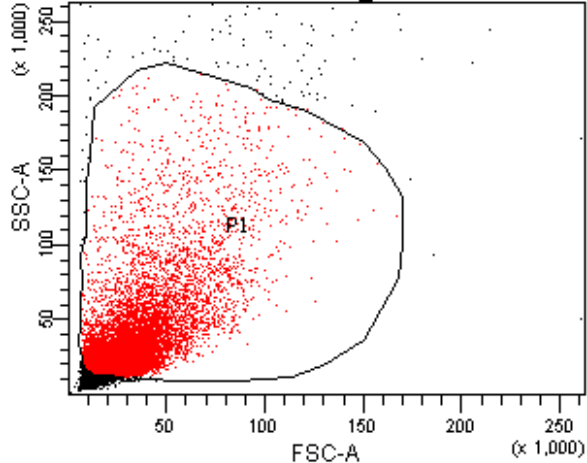


PS HSPs CD40

Population	#Events	%Parent	%Total
All Events	13,590	####	100.0
P1	10,000	73.6	73.6
P2	404	4.0	3.0

PS HSPs CD40

Population	#Events	%Parent	PE-A Mean
All Events	13,590	####	174
P1	10,000	73.6	209
P2	404	4.0	1,643

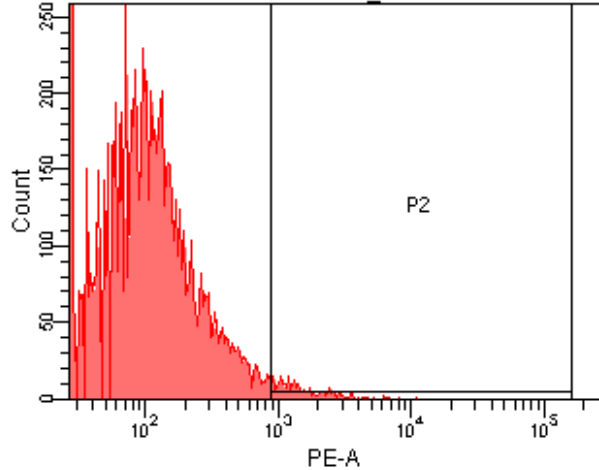
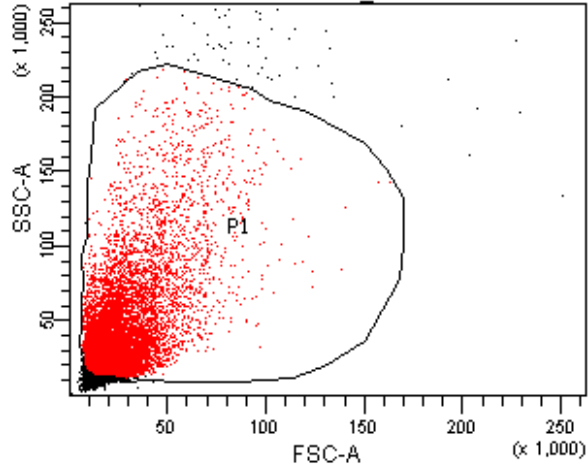


PS HSPs@glucan CD40

Population	#Events	%Parent	%Total
All Events	12,425	####	100.0
P1	10,000	80.5	80.5
P2	318	3.2	2.6

PS HSPs@glucan CD40

Population	#Events	%Parent	PE-A Mean
All Events	12,425	####	201
P1	10,000	80.5	222
P2	318	3.2	1,704

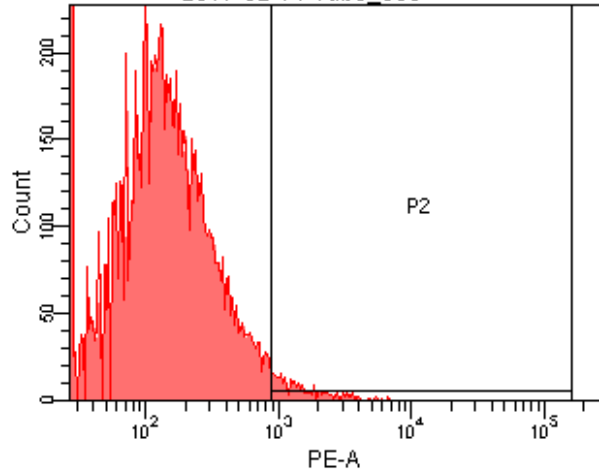
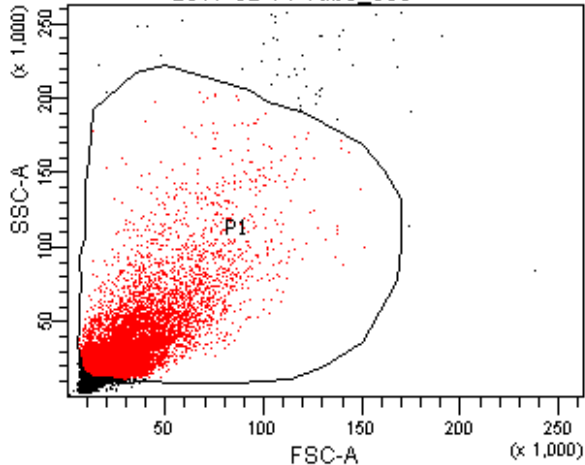


E. coli HSPs CD40

Population	#Events	%Parent	%Total
All Events	11,728	####	100.0
P1	10,000	85.3	85.3
P2	246	2.5	2.1

E. coli HSPs CD40

Population	#Events	%Parent	PE-A Mean
All Events	11,728	####	159
P1	10,000	85.3	168
P2	246	2.5	1,733

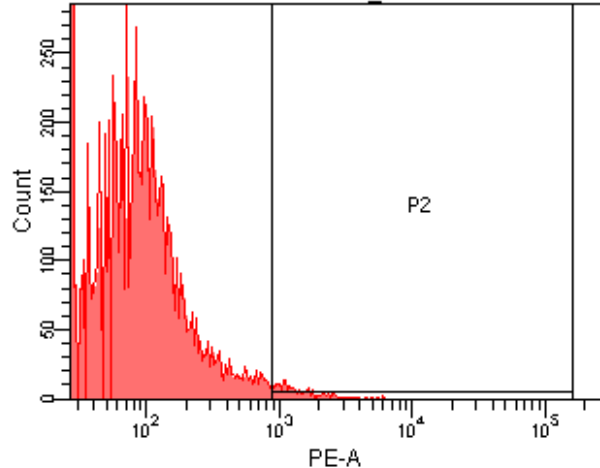
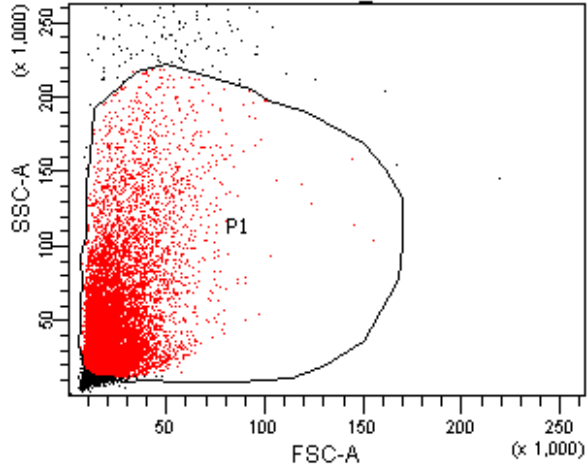


E. coli HSPs@glucan CD40

Population	#Events	%Parent	%Total
All Events	12,237	####	100.0
P1	10,000	81.7	81.7
P2	266	2.7	2.2

E. coli HSPs@glucan CD40

Population	#Events	%Parent	PE-A Mean
All Events	12,237	####	194
P1	10,000	81.7	216
P2	266	2.7	1,718

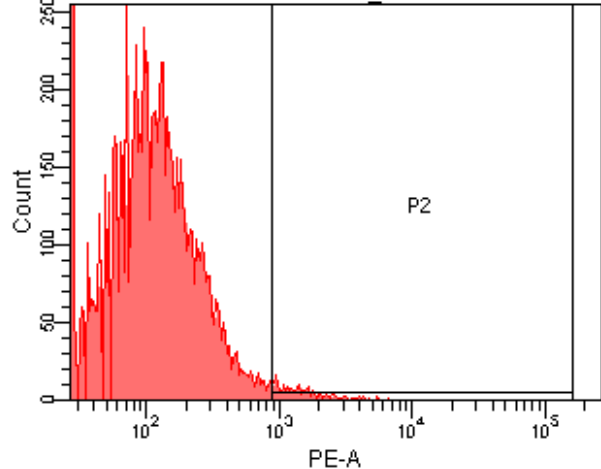
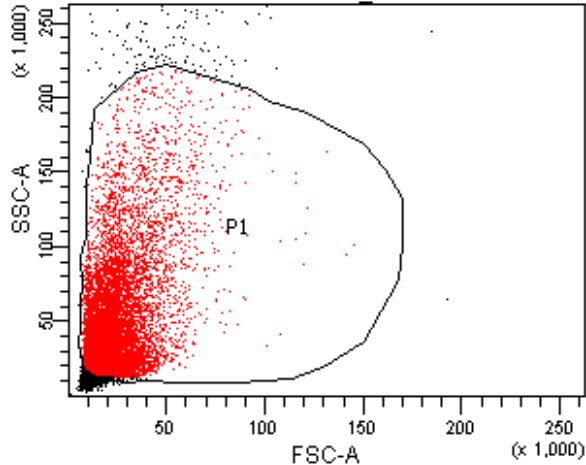


S. aureus HSPs CD40

Population	#Events	%Parent	%Total
All Events	11,115	####	100.0
P1	10,000	90.0	90.0
P2	192	1.9	1.7

S. aureus HSPs CD40

Population	#Events	%Parent	PE-A Mean
All Events	11,115	####	133
P1	10,000	90.0	132
P2	192	1.9	1,633

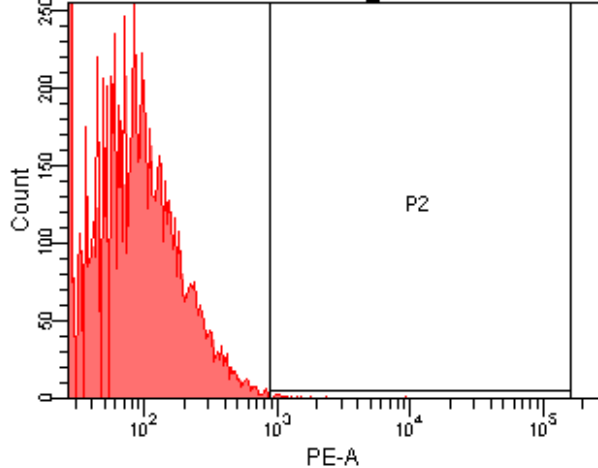
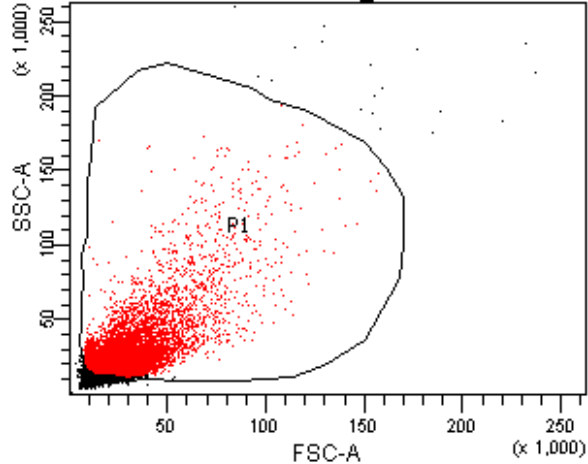


S. aureus HSPs@glucan CD40

Population	#Events	%Parent	%Total
■ All Events	11,649	####	100.0
■ P1	10,000	85.8	85.8
⊠ P2	189	1.9	1.6

S. aureus HSPs@glucan CD40

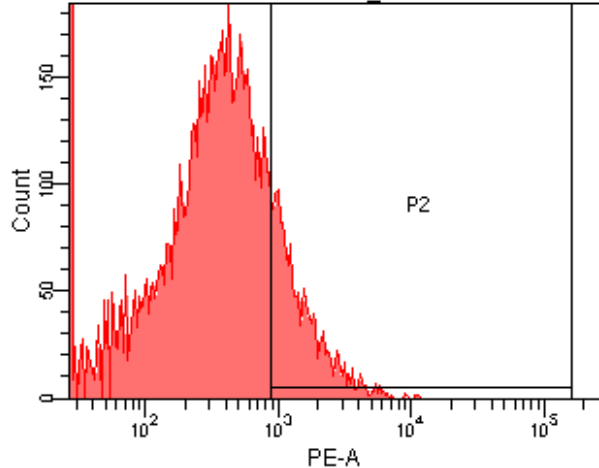
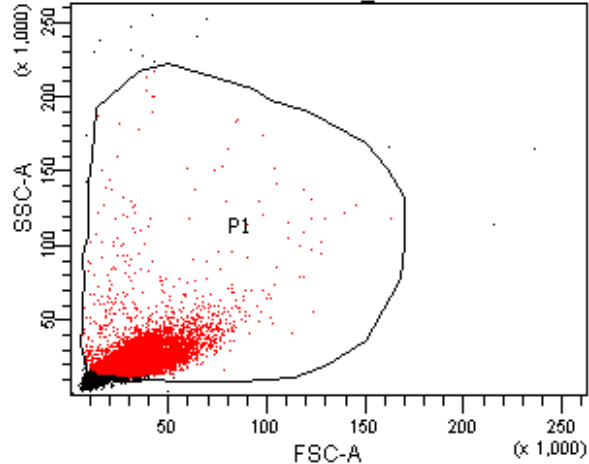
Population	#Events	%Parent	PE-A Mean
■ All Events	11,649	####	165
■ P1	10,000	85.8	162
⊠ P2	189	1.9	1,678



PBS CD40			
Population	#Events	%Parent	%Total
■ All Events	16,583	####	100.0
■ P1	10,000	60.3	60.3
⊠ P2	16	0.2	0.1

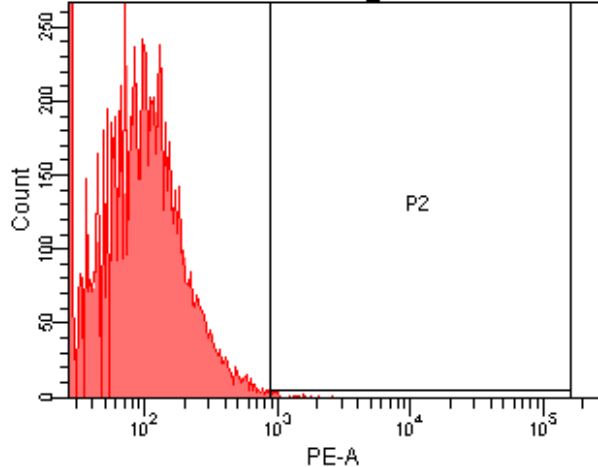
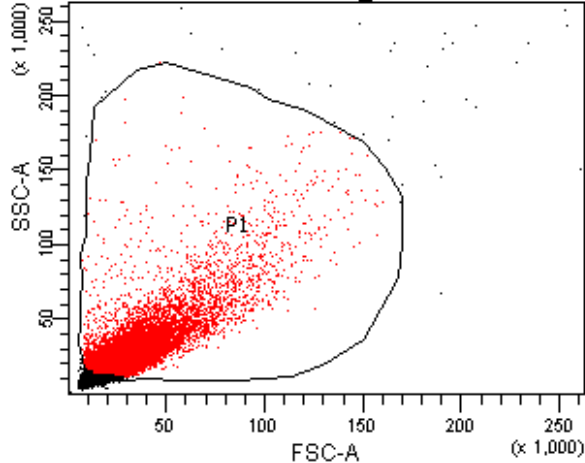
PBS CD40			
Population	#Events	%Parent	PE-A Mean
■ All Events	16,583	####	82
■ P1	10,000	60.3	102
⊠ P2	16	0.2	1,752





LPS CD40			
Population	#Events	%Parent	%Total
■ All Events	11,620	####	100.0
■ P1	10,000	86.1	86.1
⊠ P2	1,735	17.3	14.9

LPS CD40			
Population	#Events	%Parent	PE-A Mean
■ All Events	11,620	####	509
■ P1	10,000	86.1	559
⊠ P2	1,735	17.3	1,644

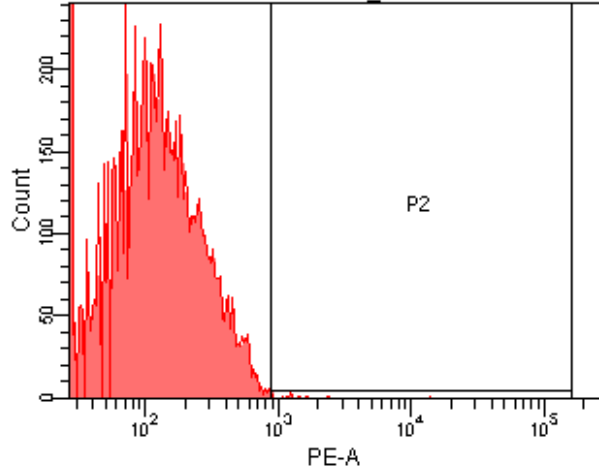
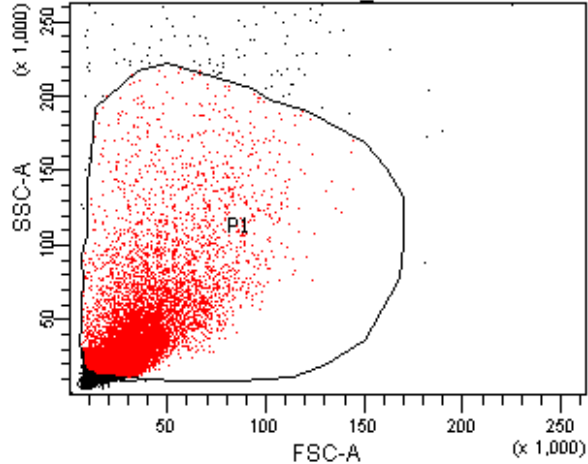


PS HSPs CD80 isotype

Population	#Events	%Parent	%Total
All Events	12,900	####	100.0
P1	10,000	77.5	77.5
P2	20	0.2	0.2

PS HSPs CD80 isotype

Population	#Events	%Parent	PE-A Mean
All Events	12,900	####	107
P1	10,000	77.5	113
P2	20	0.2	1,295

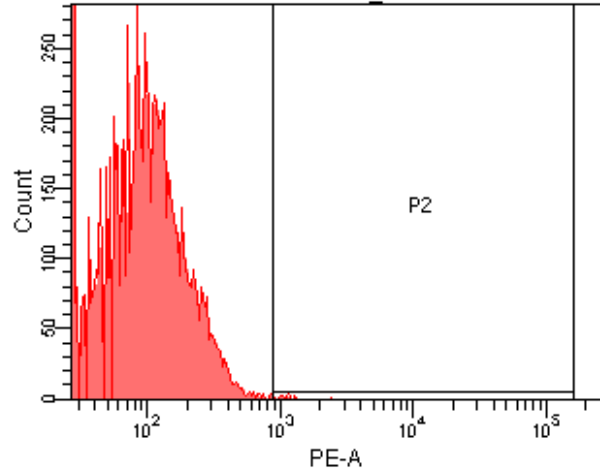
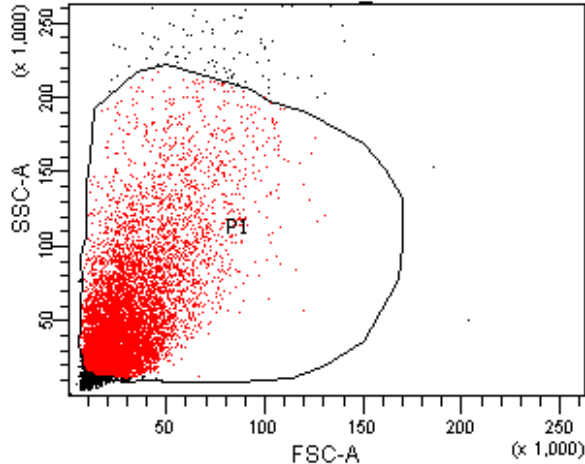


PS HSPs@glucan CD80 isotype

Population	#Events	%Parent	%Total
All Events	12,086	####	100.0
P1	10,000	82.7	82.7
P2	19	0.2	0.2

PS HSPs@glucan CD80 isotype

Population	#Events	%Parent	PE-A Mean
All Events	12,086	####	145
P1	10,000	82.7	151
P2	19	0.2	1,939

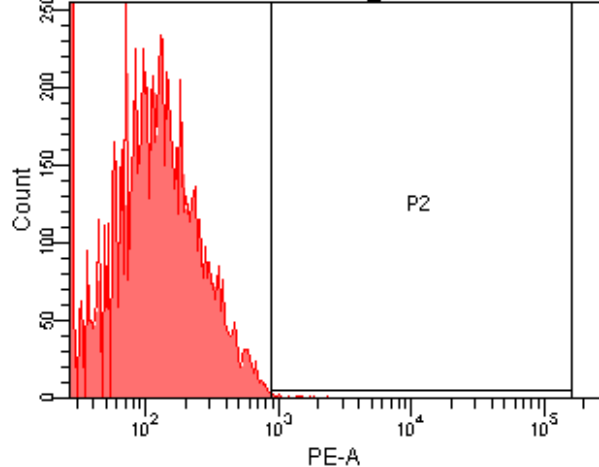
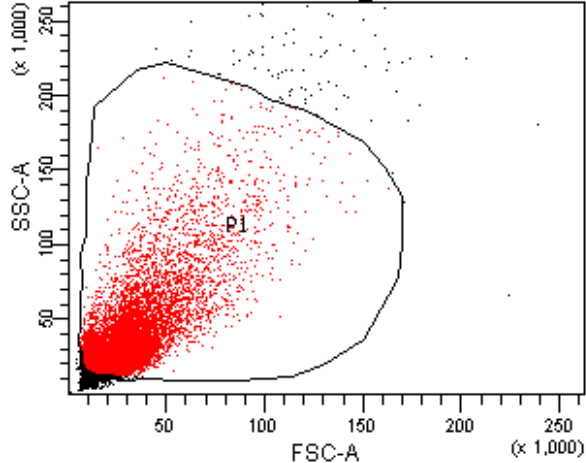


E. coli HSPs CD80 isotype

Population	#Events	%Parent	%Total
All Events	11,167	####	100.0
P1	10,000	89.5	89.5
P2	17	0.2	0.2

E. coli HSPs CD80 isotype

Population	#Events	%Parent	PE-A Mean
All Events	11,167	####	114
P1	10,000	89.5	108
P2	17	0.2	1,168

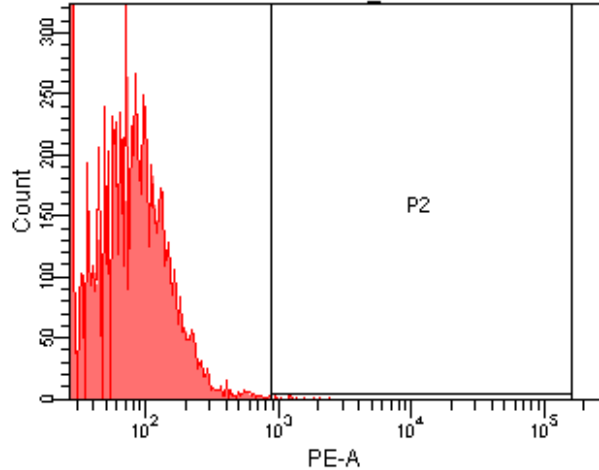
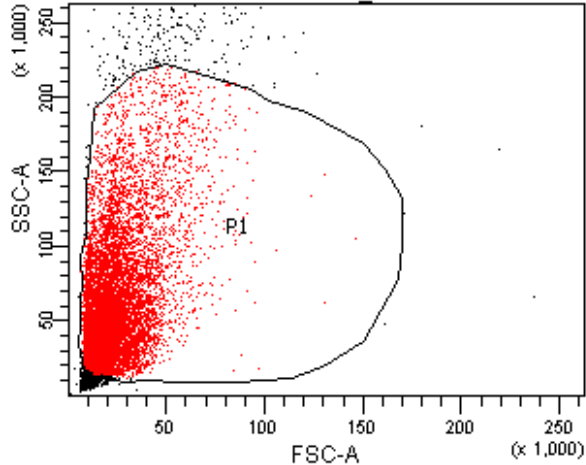


E. coli HSPs@glucan CD80 isotype

Population	#Events	%Parent	%Total
All Events	11,621	####	100.0
P1	10,000	86.1	86.1
P2	15	0.2	0.1

E. coli HSPs@glucan CD80 isotype

Population	#Events	%Parent	PE-A Mean
All Events	11,621	####	146
P1	10,000	86.1	149
P2	15	0.2	1,291

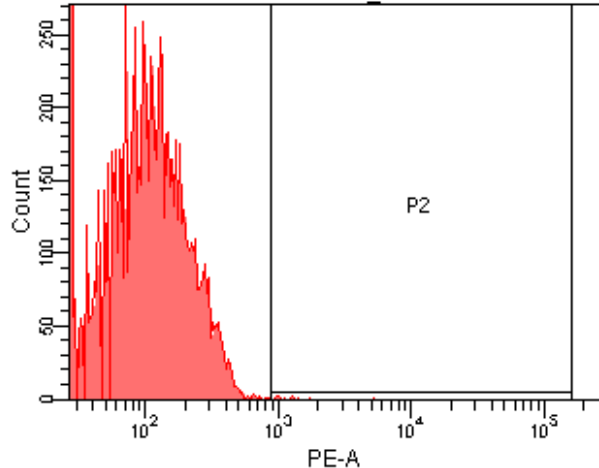
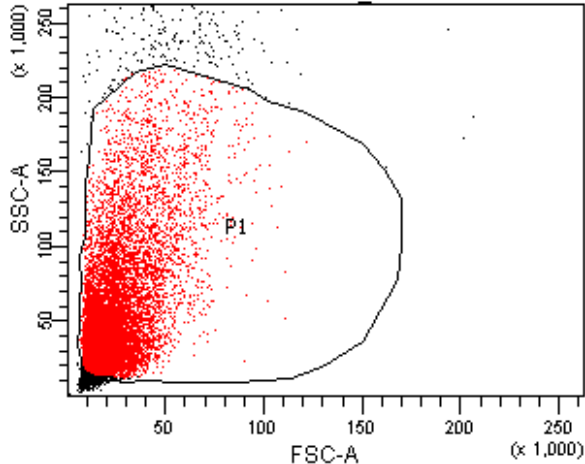


S. aureus HSPs CD80 isotype

Population	#Events	%Parent	%Total
All Events	11,123	###	100.0
P1	10,000	89.9	89.9
P2	13	0.1	0.1

S. aureus HSPs CD80 isotype

Population	#Events	%Parent	PE-A Mean
All Events	11,123	###	96
P1	10,000	89.9	83
P2	13	0.1	1,373

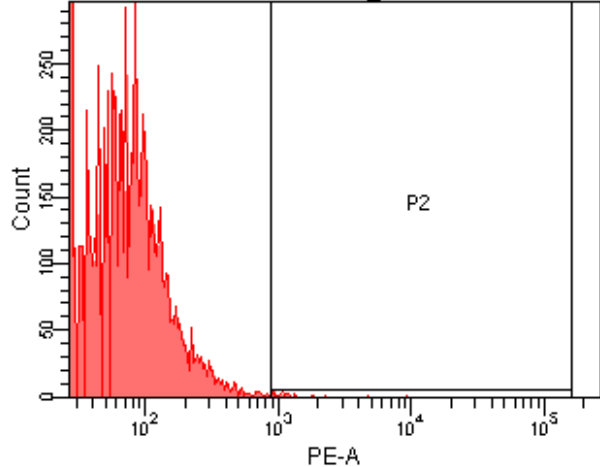
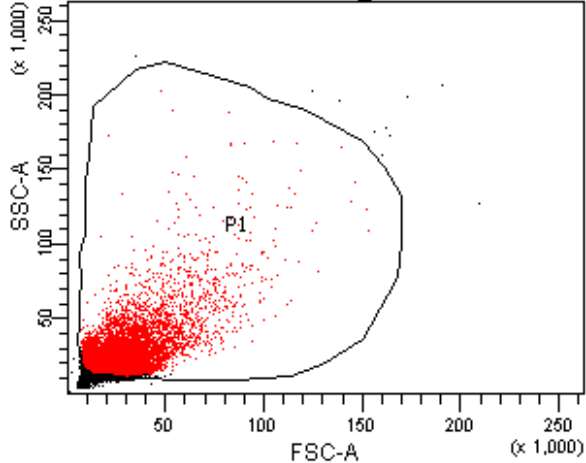


S. aureus HSPs@glucan CD80 isotype

Population	#Events	%Parent	%Total
All Events	11,300	####	100.0
P1	10,000	88.5	88.5
P2	12	0.1	0.1

S. aureus HSPs@glucan CD80 isotype

Population	#Events	%Parent	PE-A Mean
All Events	11,300	####	136
P1	10,000	88.5	119
P2	12	0.1	1,543



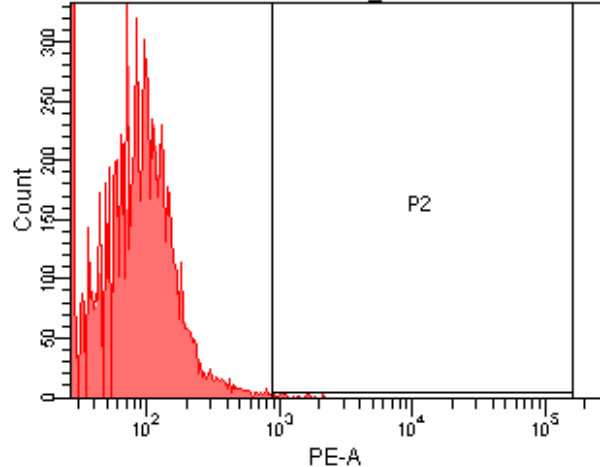
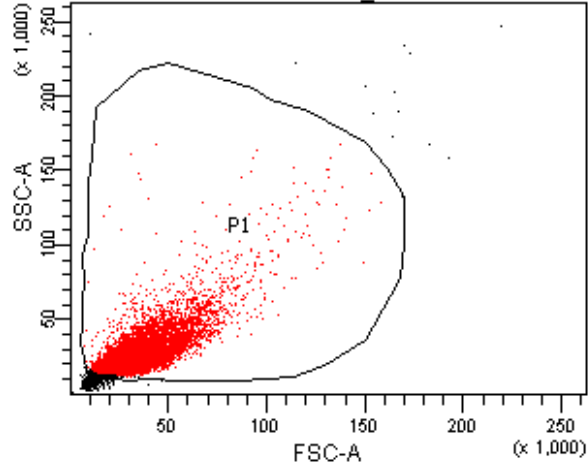
PBS CD80 isotype

Population	#Events	%Parent	%Total
All Events	13,589	####	100.0
P1	10,000	73.6	73.6
P2	24	0.2	0.2

PBS CD80 isotype

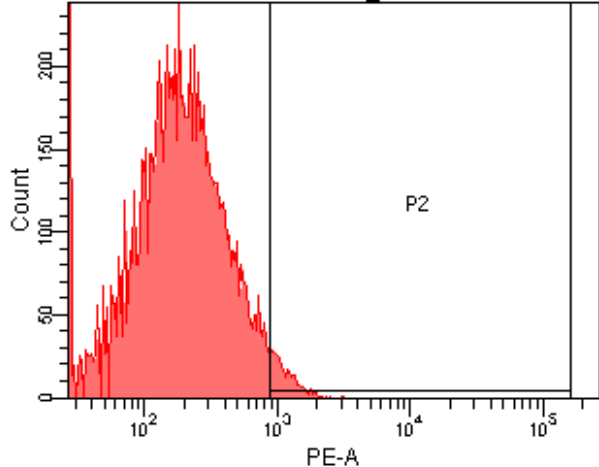
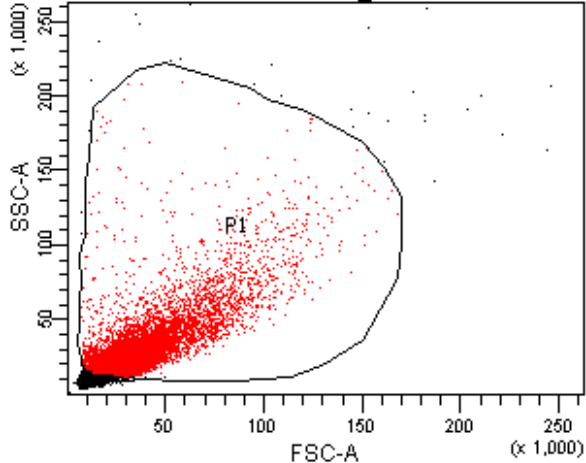
Population	#Events	%Parent	PE-A Mean
All Events	13,589	####	67
P1	10,000	73.6	76
P2	24	0.2	1,682





LPS CD80 isotype			
Population	#Events	%Parent	%Total
■ All Events	10,692	####	100.0
■ P1	10,000	93.5	93.5
⊠ P2	25	0.2	0.2

LPS CD80 isotype			
Population	#Events	%Parent	PE-A Mean
■ All Events	10,692	####	102
■ P1	10,000	93.5	96
⊠ P2	25	0.2	1,282

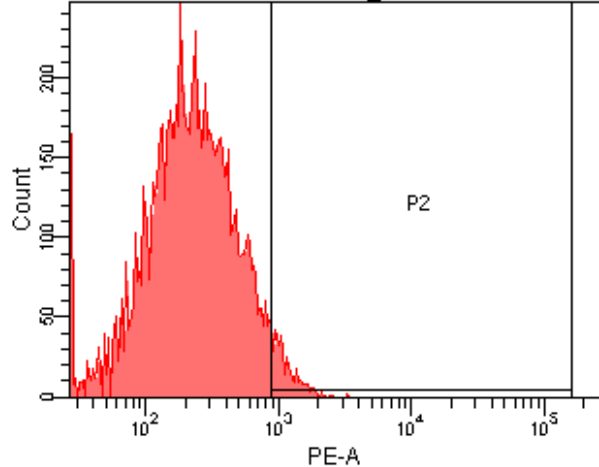
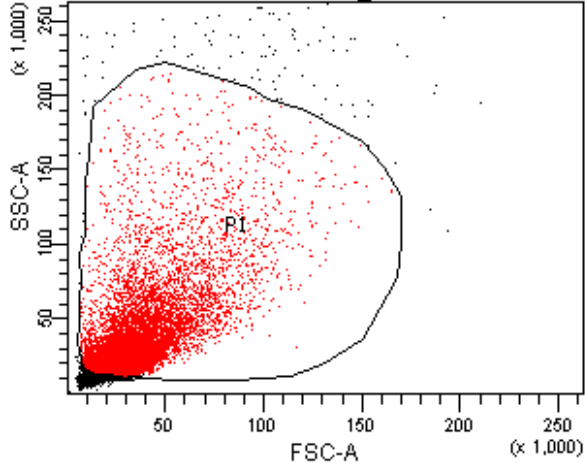


PS HSPs CD80

Population	#Events	%Parent	%Total
All Events	13,475	####	100.0
P1	10,000	74.2	74.2
P2	307	3.1	2.3

PS HSPs CD80

Population	#Events	%Parent	PE-A Mean
All Events	13,475	####	213
P1	10,000	74.2	256
P2	307	3.1	1,180

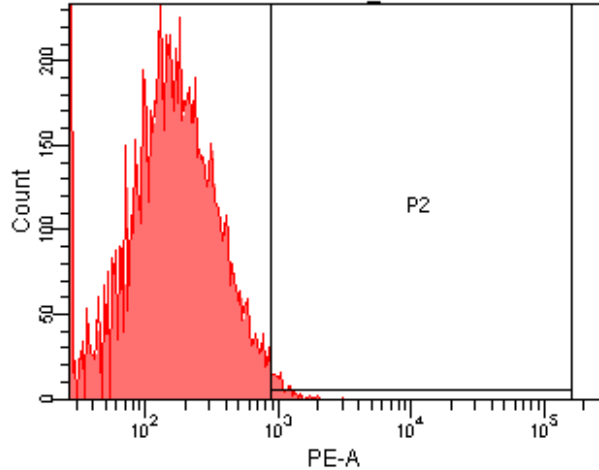
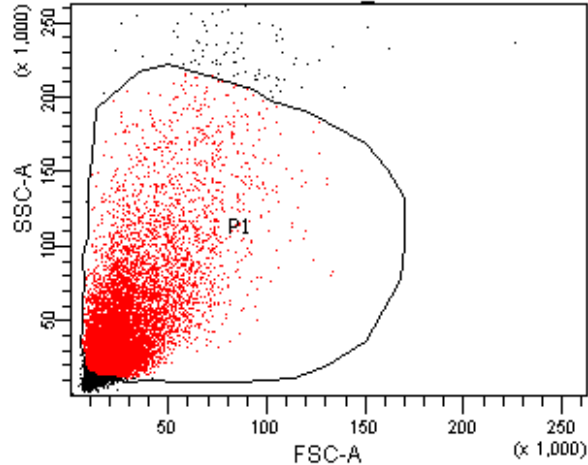


PS HSPs@glucan CD80

Population	#Events	%Parent	%Total
■ All Events	12,226	####	100.0
■ P1	10,000	81.8	81.8
⊠ P2	406	4.1	3.3

PS HSPs@glucan CD80

Population	#Events	%Parent	PE-A Mean
■ All Events	12,226	####	283
■ P1	10,000	81.8	297
⊠ P2	406	4.1	1,169

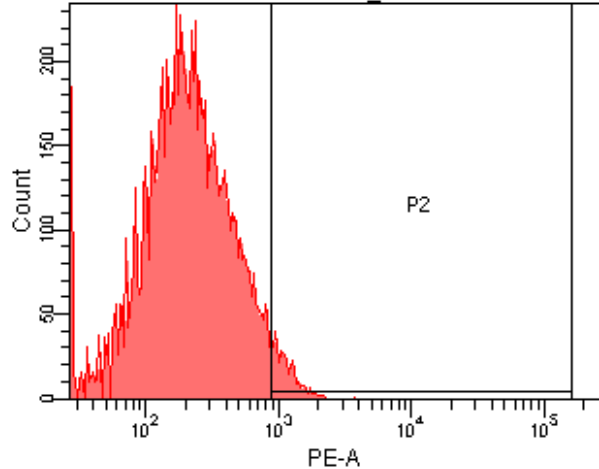
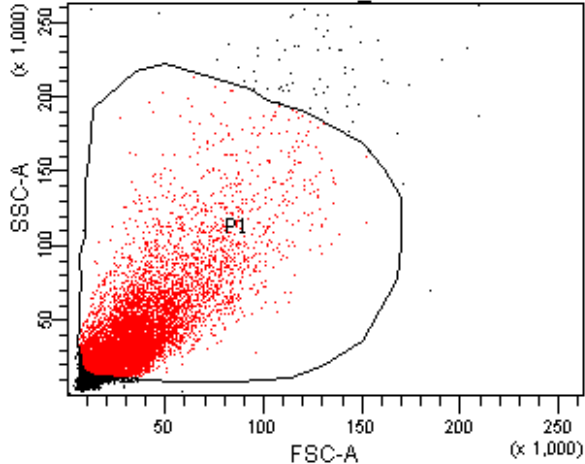


E. coli HSPs CD80

Population	#Events	%Parent	%Total
All Events	11,608	####	100.0
P1	10,000	86.1	86.1
P2	130	1.3	1.1

E. coli HSPs CD80

Population	#Events	%Parent	PE-A Mean
All Events	11,608	####	209
P1	10,000	86.1	214
P2	130	1.3	1,113

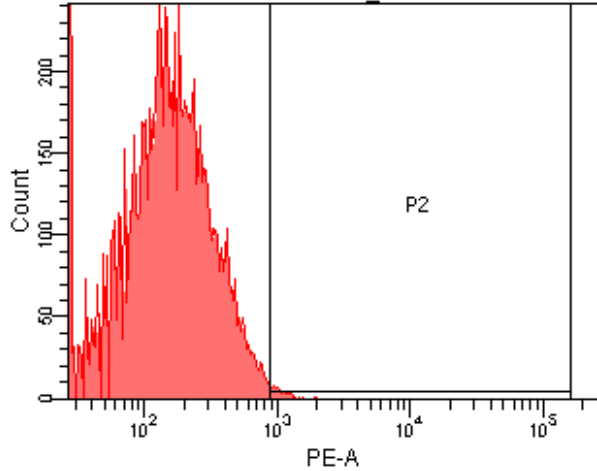
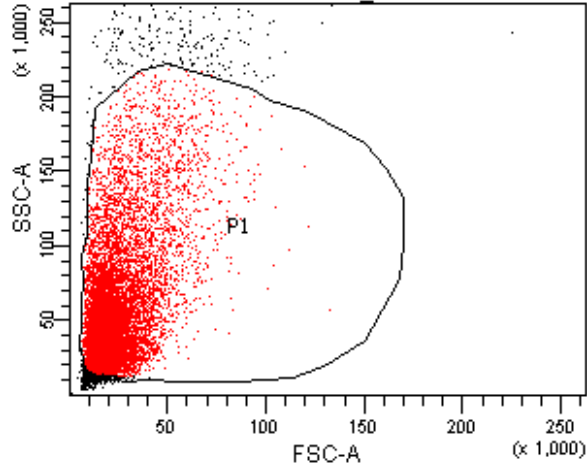


E. coli HSPs@glucan CD80

Population	#Events	%Parent	%Total
All Events	12,274	####	100.0
P1	10,000	81.5	81.5
P2	375	3.8	3.1

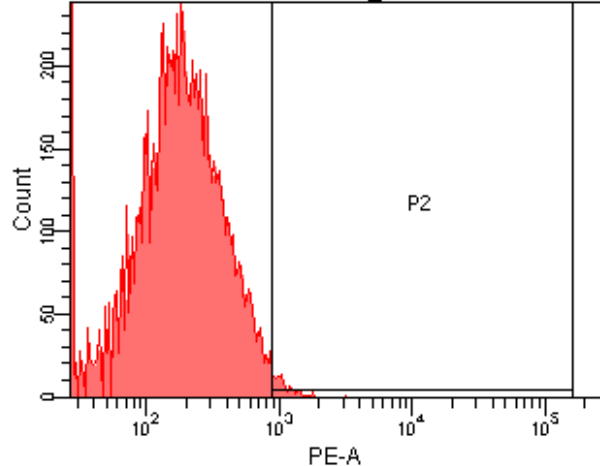
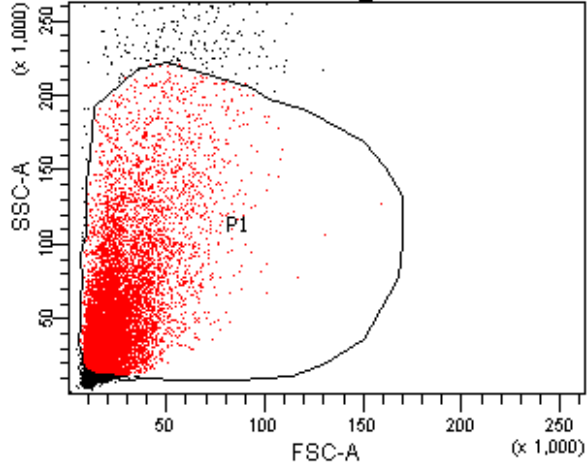
E. coli HSPs@glucan CD80

Population	#Events	%Parent	PE-A Mean
All Events	12,274	####	262
P1	10,000	81.5	281
P2	375	3.8	1,167



S. aureus HSPs CD80			
Population	#Events	%Parent	%Total
All Events	11,137	####	100.0
P1	10,000	89.8	89.8
P2	59	0.6	0.5

S. aureus HSPs CD80			
Population	#Events	%Parent	PE-A Mean
All Events	11,137	####	207
P1	10,000	89.8	191
P2	59	0.6	1,083

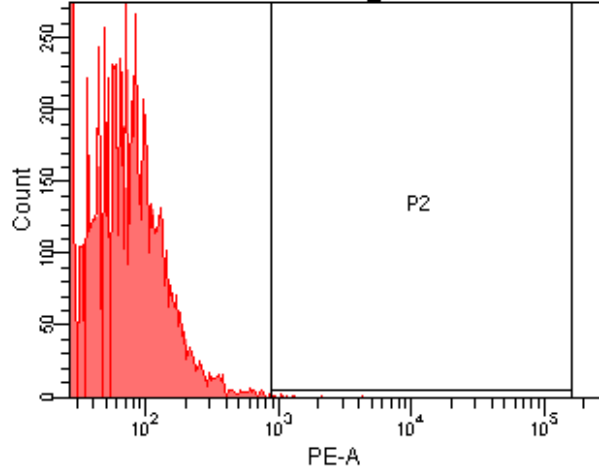
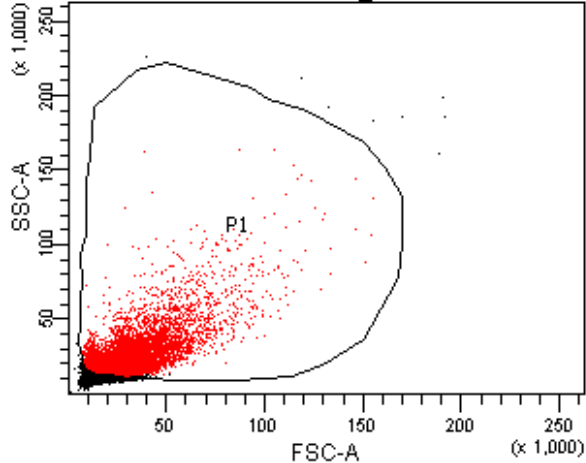


S. aureus HSPs@glucan CD80

Population	#Events	%Parent	%Total
■ All Events	11,560	####	100.0
■ P1	10,000	86.5	86.5
⊠ P2	111	1.1	1.0

S. aureus HSPs@glucan CD80

Population	#Events	%Parent	PE-A Mean
■ All Events	11,560	####	244
■ P1	10,000	86.5	229
⊠ P2	111	1.1	1,110



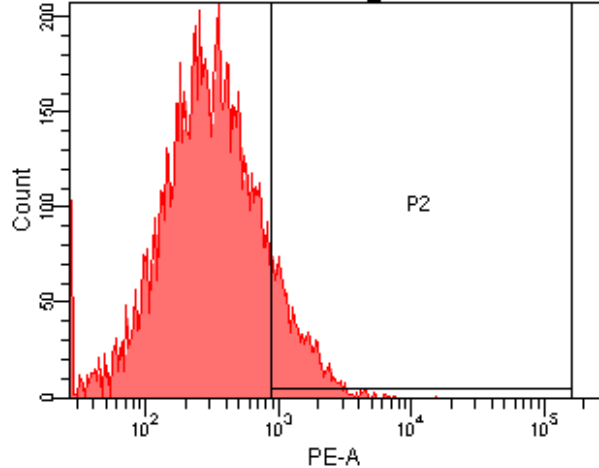
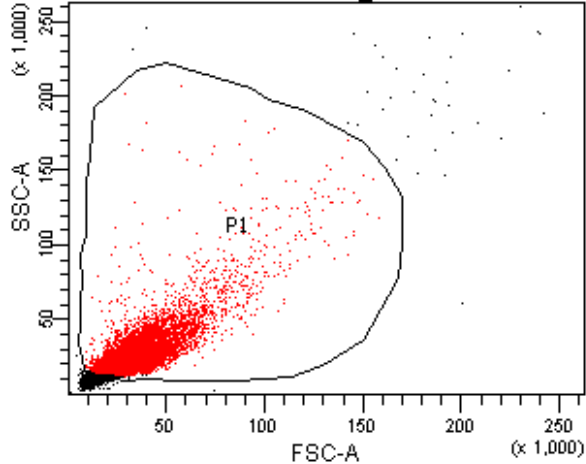
PBS CD80

Population	#Events	%Parent	%Total
All Events	16,327	####	100.0
P1	10,000	61.2	61.2
P2	11	0.1	0.1

PBS CD80

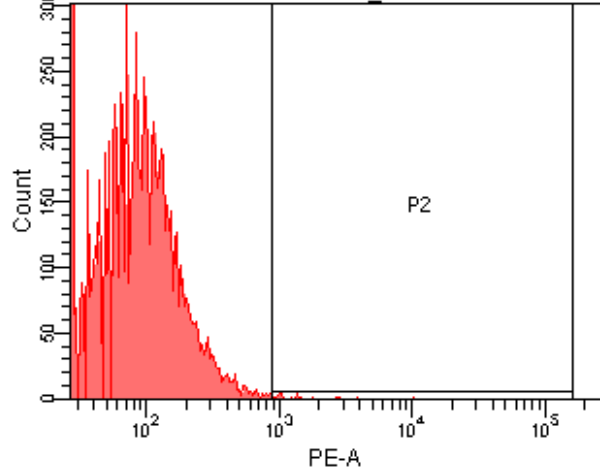
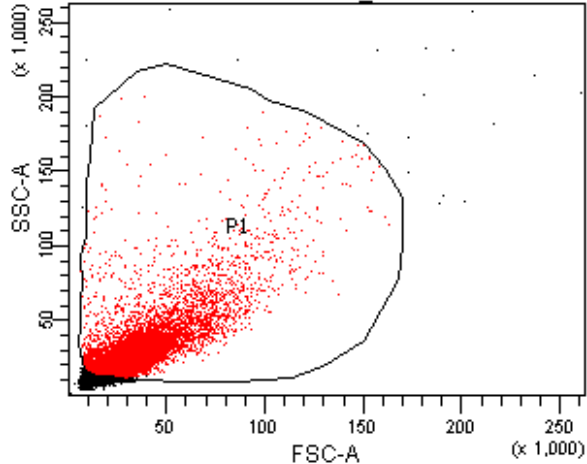
Population	#Events	%Parent	PE-A Mean
All Events	16,327	####	58
P1	10,000	61.2	72
P2	11	0.1	1,449





LPS CD80			
Population	#Events	%Parent	%Total
■ All Events	11,327	####	100.0
■ P1	10,000	88.3	88.3
⊠ P2	1,216	12.2	10.7

LPS CD80			PE-A
Population	#Events	%Parent	Mean
■ All Events	11,327	####	430
■ P1	10,000	88.3	460
⊠ P2	1,216	12.2	1,499

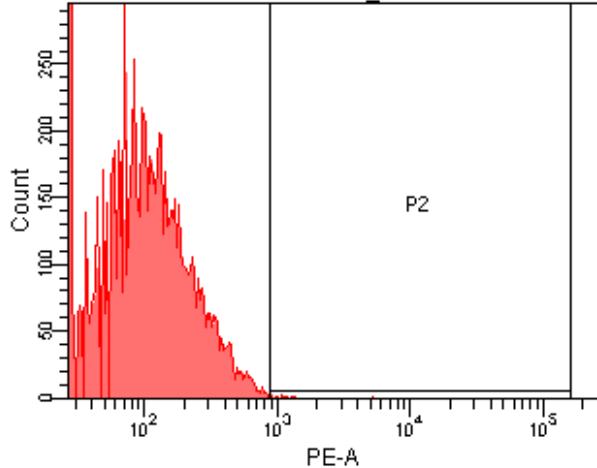
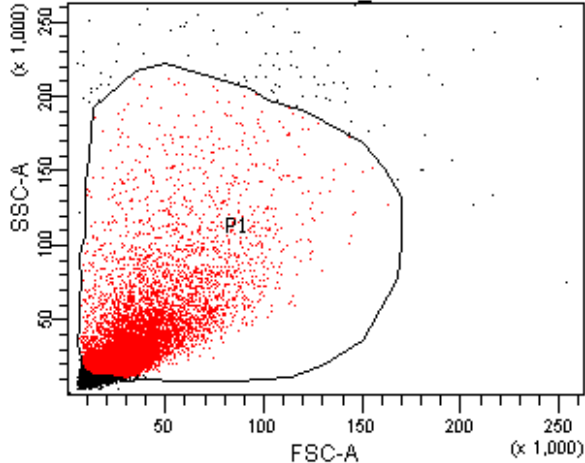


PS HSPs CD86 isotype

Population	#Events	%Parent	%Total
All Events	13,774	####	100.0
P1	10,000	72.6	72.6
P2	21	0.2	0.2

PS HSPs CD86 isotype

Population	#Events	%Parent	PE-A Mean
All Events	13,774	####	86
P1	10,000	72.6	99
P2	21	0.2	1,876

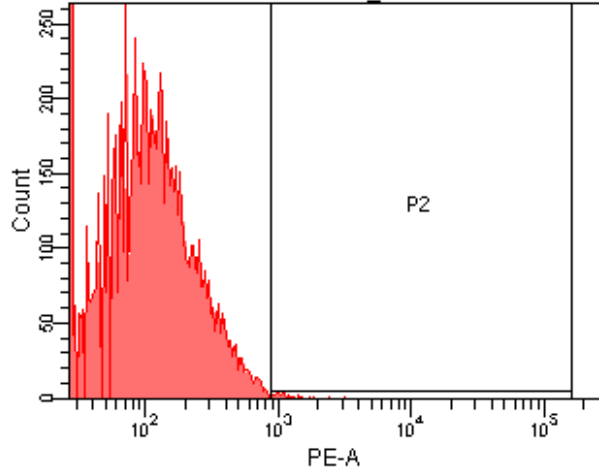
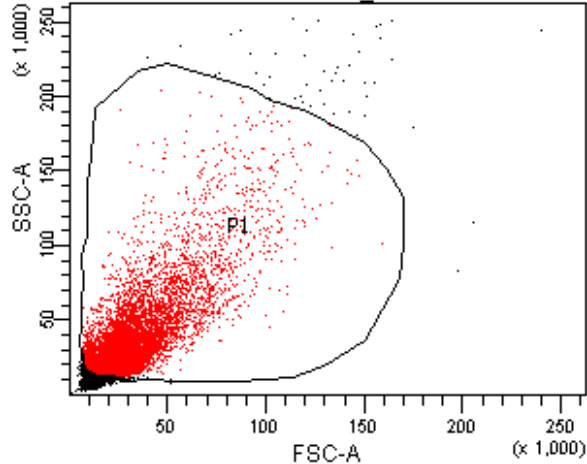


PS HSPs@glucan CD86 isotype

Population	#Events	%Parent	%Total
All Events	13,071	####	100.0
P1	10,000	76.5	76.5
P2	14	0.1	0.1

PS HSPs@glucan CD86 isotype

Population	#Events	%Parent	PE-A Mean
All Events	13,071	####	116
P1	10,000	76.5	125
P2	14	0.1	1,381

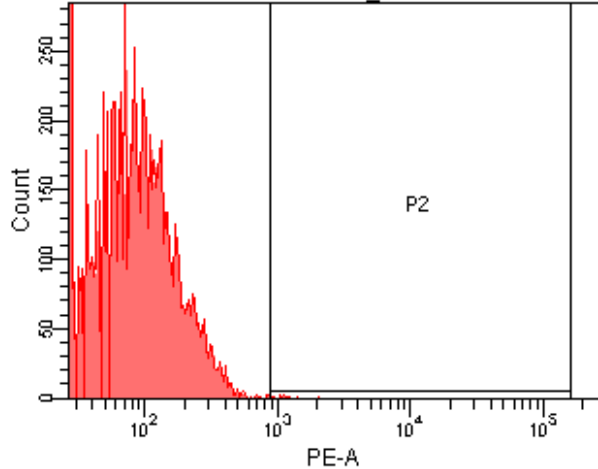
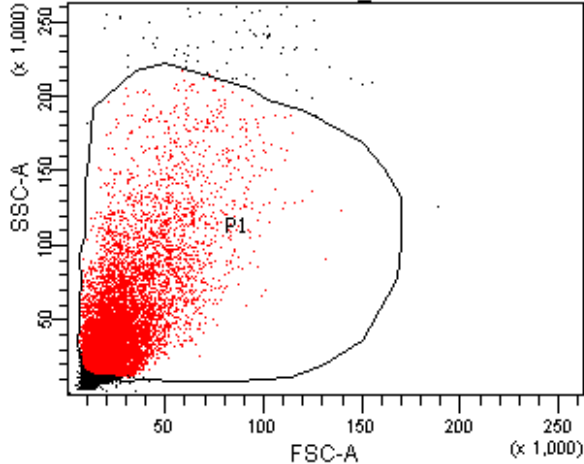


E. coli HSPs CD86 isotype

Population	#Events	%Parent	%Total
All Events	12,959	####	100.0
P1	10,000	77.2	77.2
P2	29	0.3	0.2

E. coli HSPs CD86 isotype

Population	#Events	%Parent	PE-A Mean
All Events	12,959	####	122
P1	10,000	77.2	134
P2	29	0.3	1,261

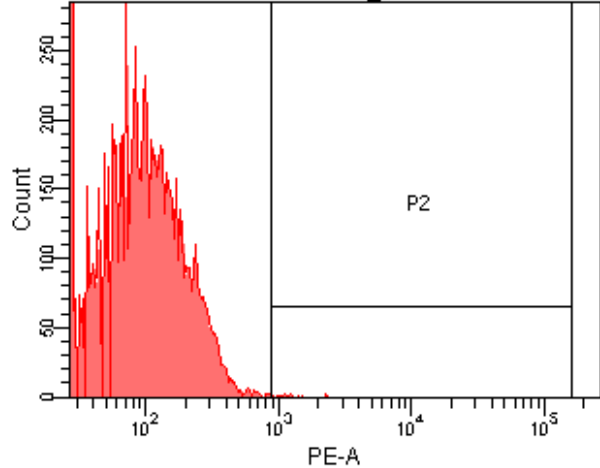
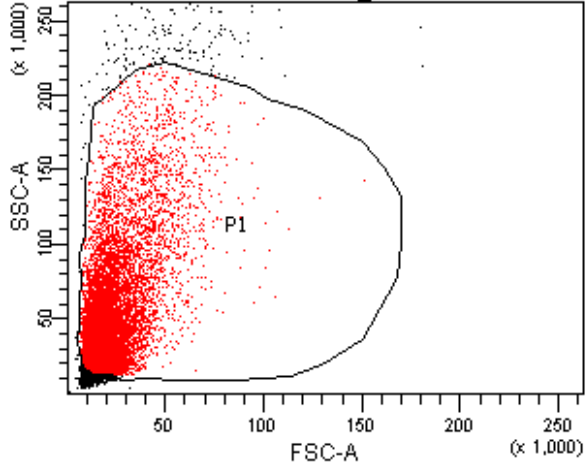


E. coli HSPs@glucan CD86 isotype

Population	#Events	%Parent	%Total
All Events	11,790	####	100.0
P1	10,000	84.8	84.8
P2	15	0.2	0.1

E. coli HSPs@glucan CD86 isotype

Population	#Events	%Parent	PE-A Mean
All Events	11,790	####	91
P1	10,000	84.8	93
P2	15	0.2	1,120

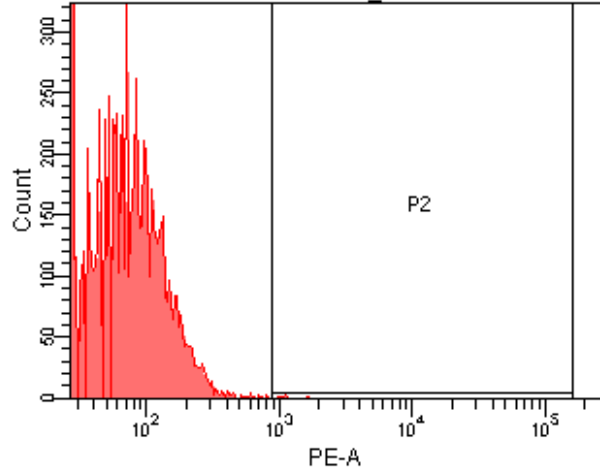
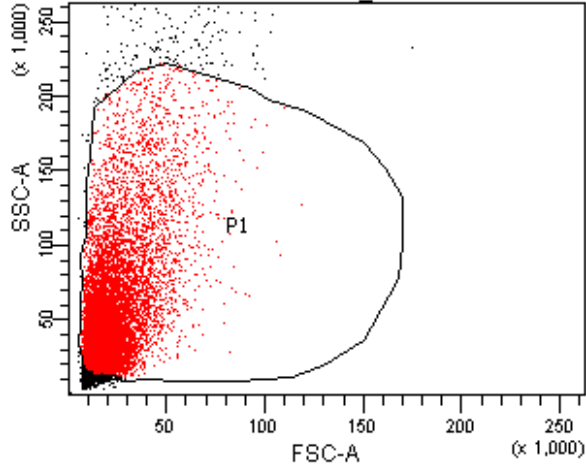


S. aureus HSPs CD86 isotype

Population	#Events	%Parent	%Total
All Events	11,687	####	100.0
P1	10,000	85.6	85.6
P2	16	0.2	0.1

S. aureus HSPs CD86 isotype

Population	#Events	%Parent	PE-A Mean
All Events	11,687	####	116
P1	10,000	85.6	108
P2	16	0.2	1,259

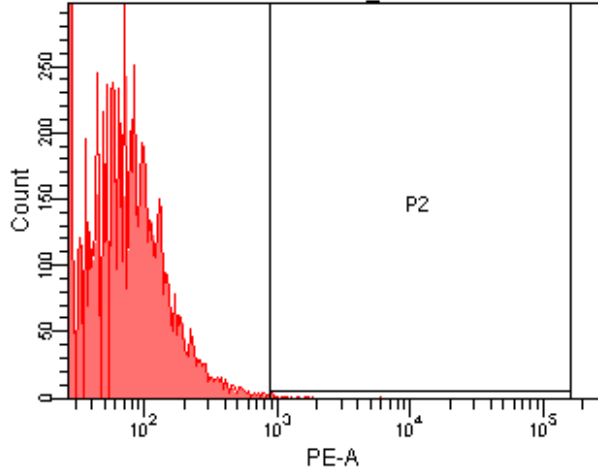
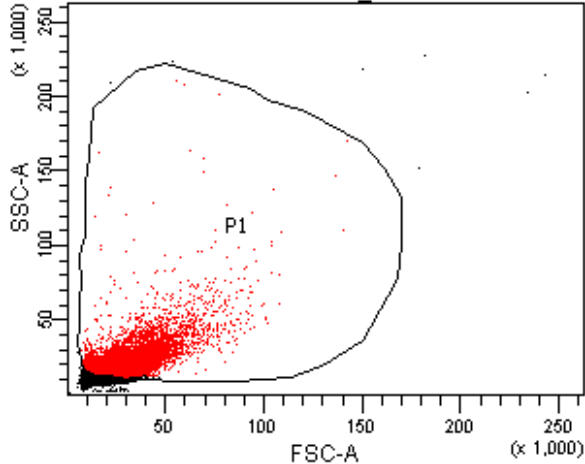


S. aureus HSPs@glucan CD86 isotype

Population	#Events	%Parent	%Total
All Events	11,132	####	100.0
P1	10,000	89.8	89.8
P2	8	0.1	0.1

S. aureus HSPs@glucan CD86 isotype

Population	#Events	%Parent	PE-A Mean
All Events	11,132	####	78
P1	10,000	89.8	71
P2	8	0.1	1,138



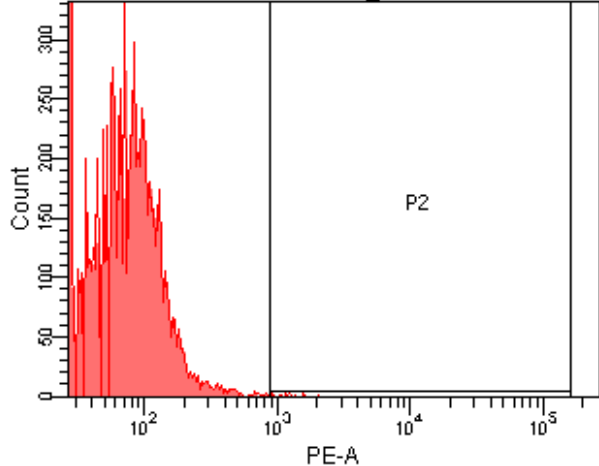
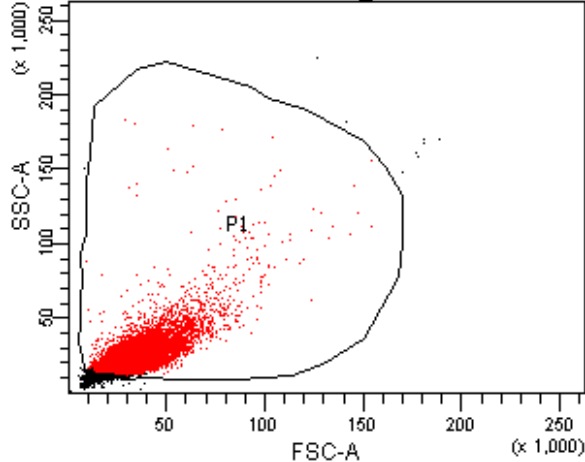
PBS CD86 isotype

Population	#Events	%Parent	%Total
All Events	25,798	####	100.0
P1	10,000	38.8	38.8
P2	20	0.2	0.1

PBS CD86 isotype

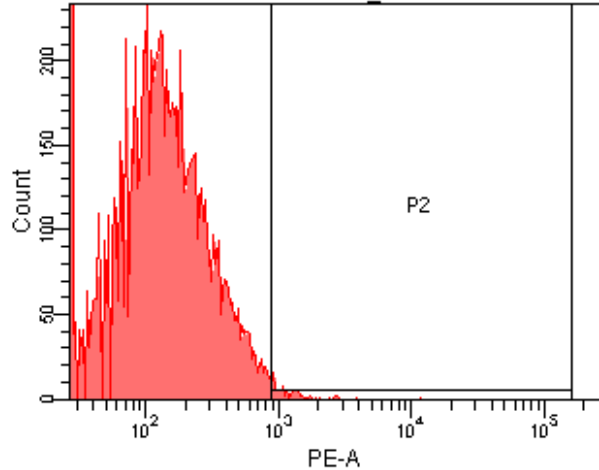
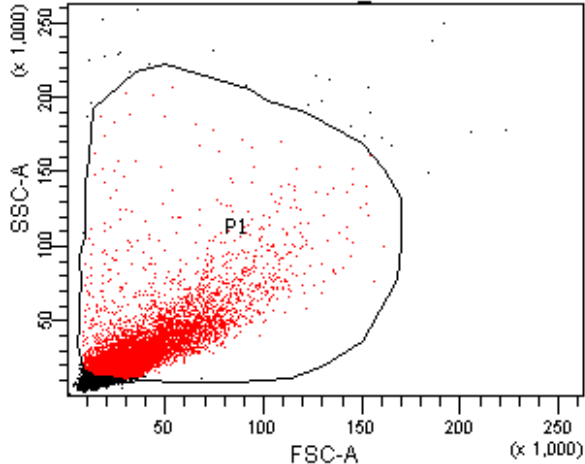
Population	#Events	%Parent	PE-A Mean
All Events	25,798	####	54
P1	10,000	38.8	77
P2	20	0.2	1,395





LPS CD86 isotype			
Population	#Events	%Parent	%Total
■ All Events	11,088	####	100.0
■ P1	10,000	90.2	90.2
⊠ P2	14	0.1	0.1

LPS CD86 isotype			
Population	#Events	%Parent	PE-A Mean
■ All Events	11,088	####	74
■ P1	10,000	90.2	73
⊠ P2	14	0.1	1,285

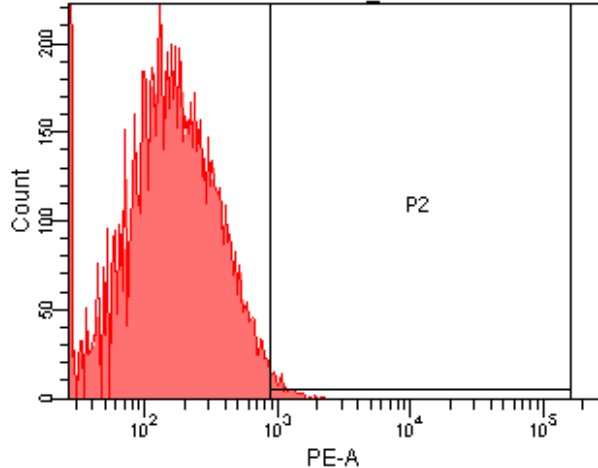
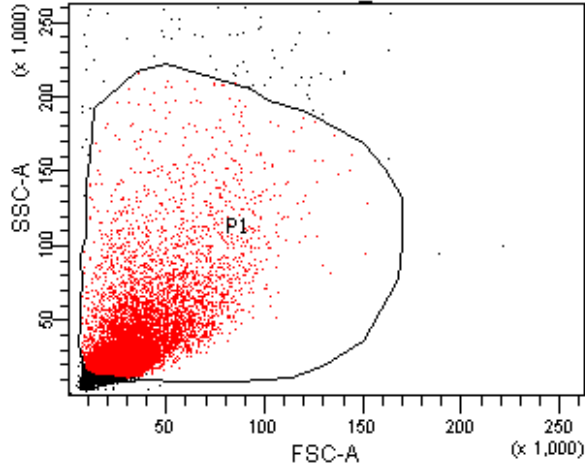


PS HSPs CD86

Population	#Events	%Parent	%Total
All Events	14,370	####	100.0
P1	10,000	69.6	69.6
P2	97	1.0	0.7

PS HSPs CD86

Population	#Events	%Parent	PE-A Mean
All Events	14,370	####	148
P1	10,000	69.6	179
P2	97	1.0	1,336

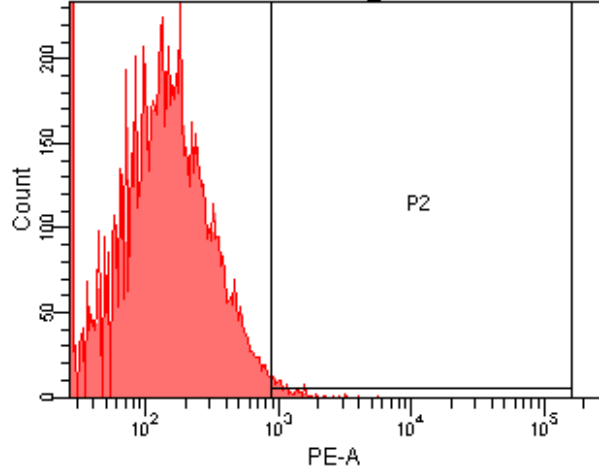
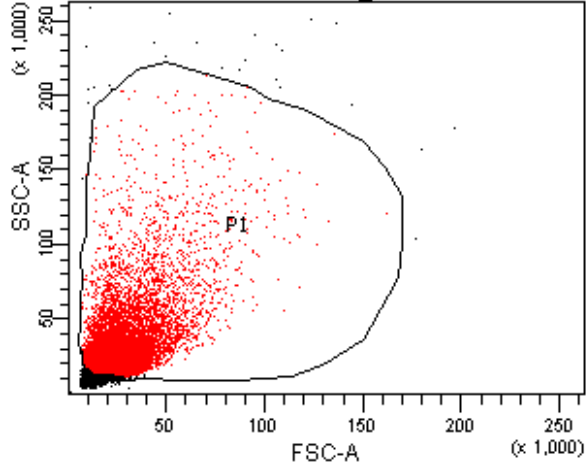


PS HSPs@glucan CD86

Population	#Events	%Parent	%Total
All Events	13,145	####	100.0
P1	10,000	76.1	76.1
P2	130	1.3	1.0

PS HSPs@glucan CD86

Population	#Events	%Parent	PE-A Mean
All Events	13,145	####	188
P1	10,000	76.1	214
P2	130	1.3	1,139

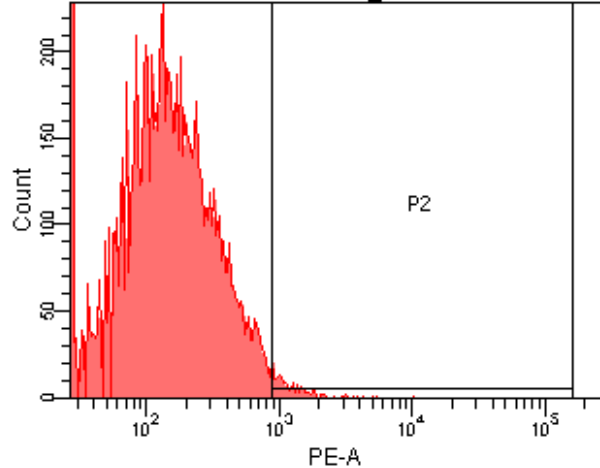
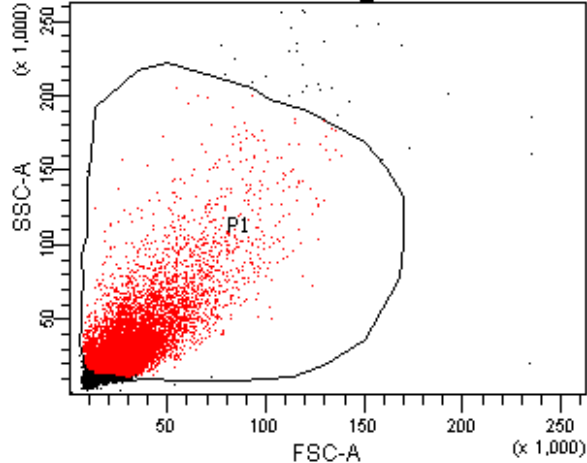


E. coli HSPs CD86

Population	#Events	%Parent	%Total
All Events	13,627	####	100.0
P1	10,000	73.4	73.4
P2	115	1.2	0.8

E. coli HSPs CD86

Population	#Events	%Parent	PE-A Mean
All Events	13,627	####	158
P1	10,000	73.4	186
P2	115	1.2	1,285

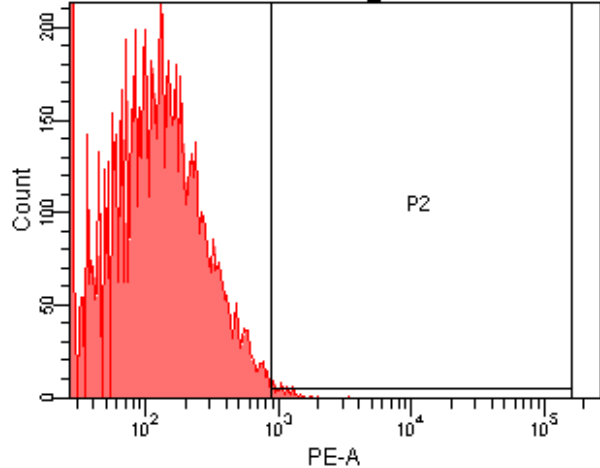
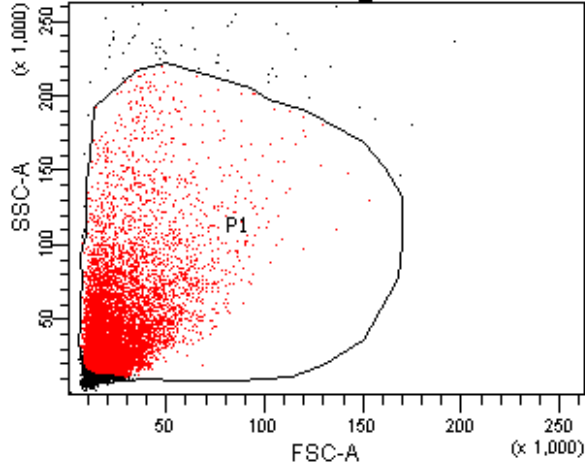


E. coli HSPs@glucan CD86

Population	#Events	%Parent	%Total
All Events	13,516	####	100.0
P1	10,000	74.0	74.0
P2	169	1.7	1.3

E. coli HSPs@glucan CD86

Population	#Events	%Parent	PE-A Mean
All Events	13,516	####	174
P1	10,000	74.0	205
P2	169	1.7	1,400

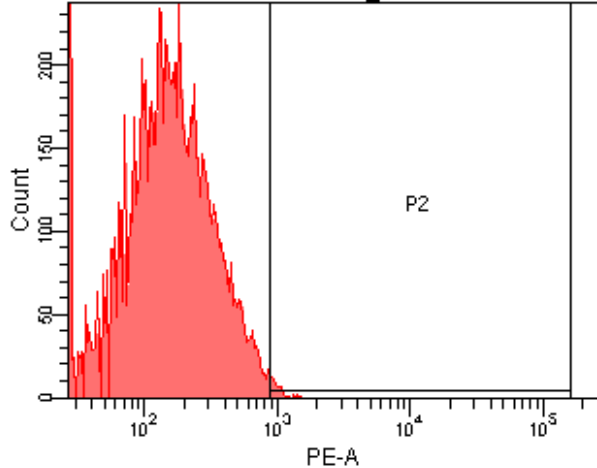
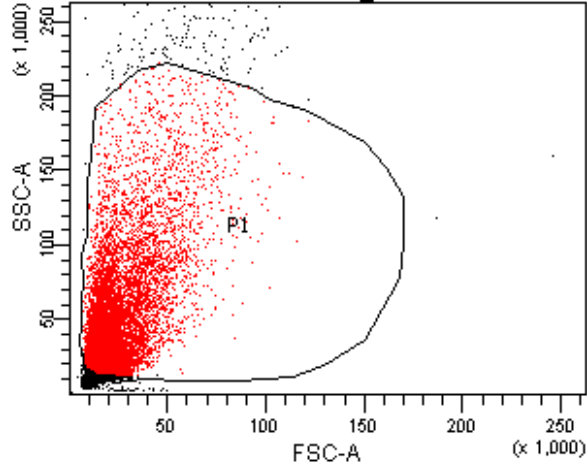


S. aureus HSPs CD86

Population	#Events	%Parent	%Total
All Events	12,179	####	100.0
P1	10,000	82.1	82.1
P2	72	0.7	0.6

S. aureus HSPs CD86

Population	#Events	%Parent	PE-A Mean
All Events	12,179	####	146
P1	10,000	82.1	155
P2	72	0.7	1,149

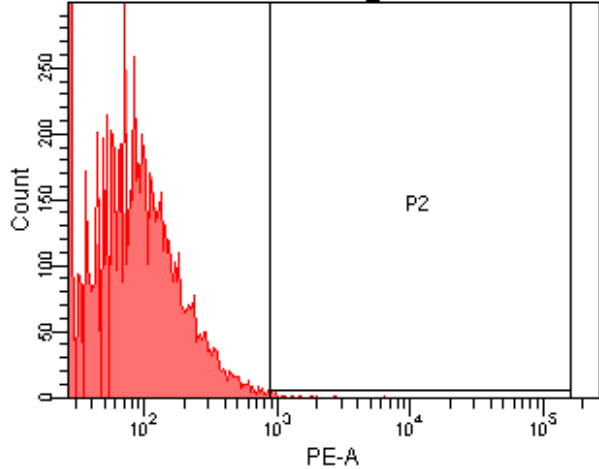
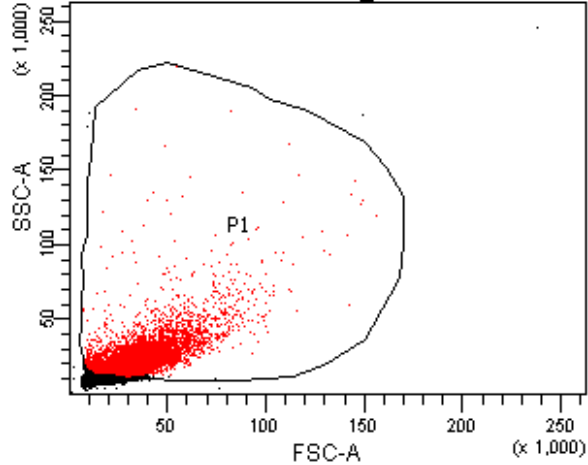


S. aureus HSPs@glucan CD86

Population	#Events	%Parent	%Total
All Events	12,135	####	100.0
P1	10,000	82.4	82.4
P2	67	0.7	0.6

S. aureus HSPs@glucan CD86

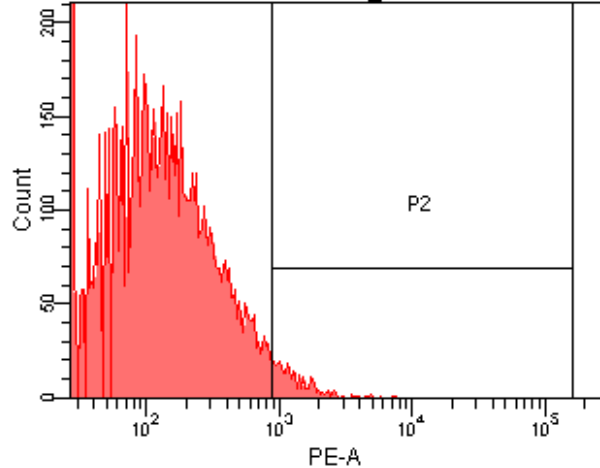
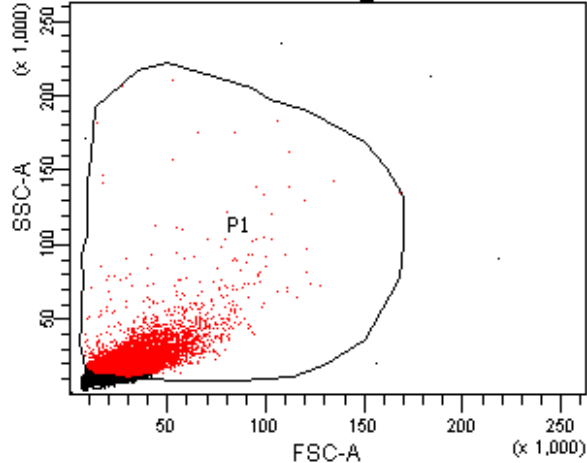
Population	#Events	%Parent	PE-A Mean
All Events	12,135	####	195
P1	10,000	82.4	195
P2	67	0.7	1,008



PBS CD86			
Population	#Events	%Parent	%Total
All Events	28,299	####	100.0
P1	10,000	35.3	35.3
P2	23	0.2	0.1

PBS CD86			
Population	#Events	%Parent	PE-A Mean
All Events	28,299	####	65
P1	10,000	35.3	100
P2	23	0.2	1,473





### LPS CD86

Population	#Events	%Parent	%Total
All Events	22,081	####	100.0
P1	10,000	45.3	45.3
P2	304	3.0	1.4

### LPS CD86

Population	#Events	%Parent	PE-A Mean
All Events	22,081	####	122
P1	10,000	45.3	200
P2	304	3.0	1,479