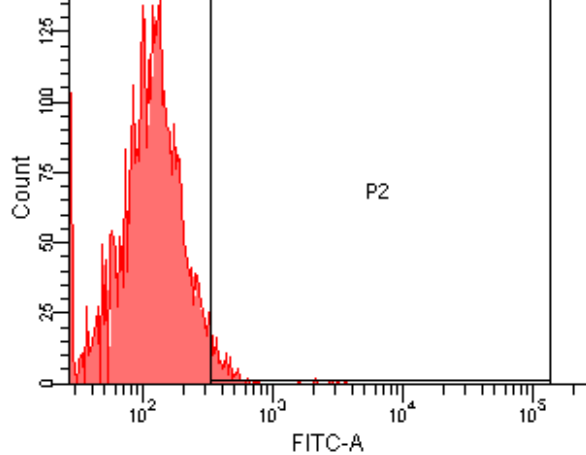
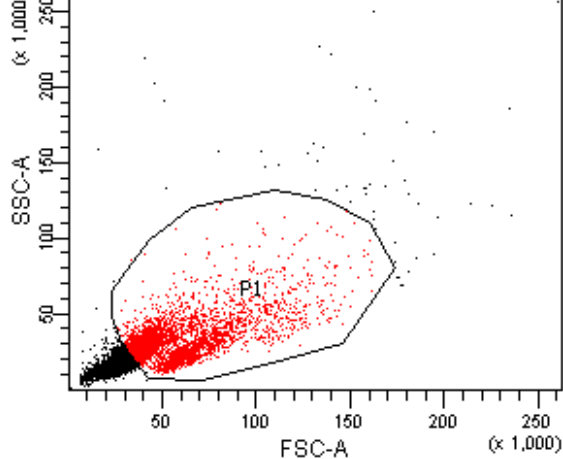


Blank

Population	#Events	%Parent	%Total
■ All Events	10,000	####	100.0
■ P1	4,395	44.0	44.0
☒ P2	0	0.0	0.0

Blank

Population	#Events	%Parent	FITC-A Mean
■ All Events	10,000	####	39
■ P1	4,395	44.0	53
☒ P2	0	0.0	####

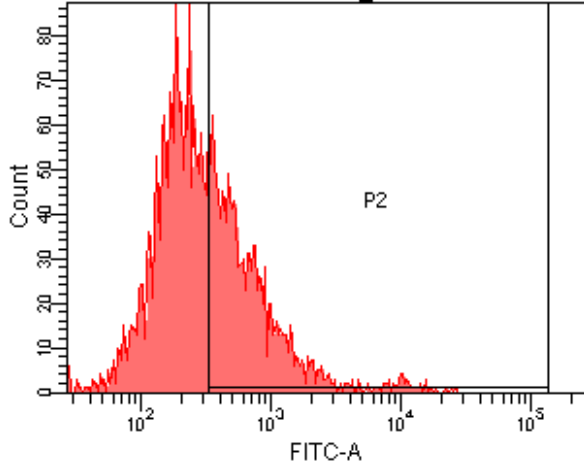
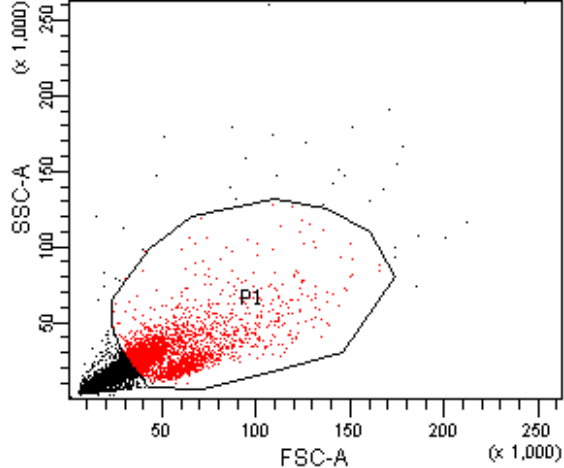


FITC-OVA 0.5h

Population	#Events	%Parent	%Total
All Events	10,000	####	100.0
P1	4,033	40.3	40.3
P2	121	3.0	1.2

FITC-OVA 0.5h

Population	#Events	%Parent	FITC-A Mean
All Events	10,000	####	95
P1	4,033	40.3	135
P2	121	3.0	513

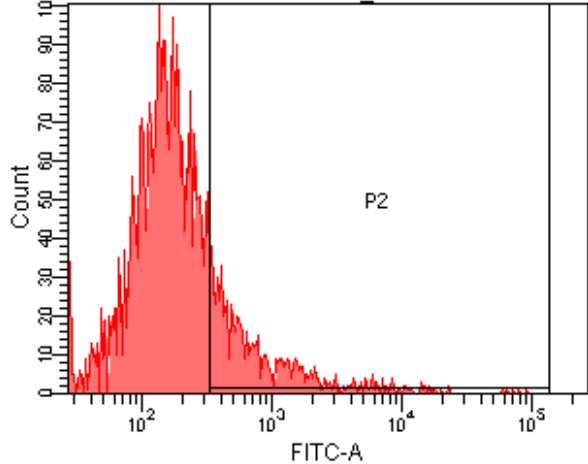
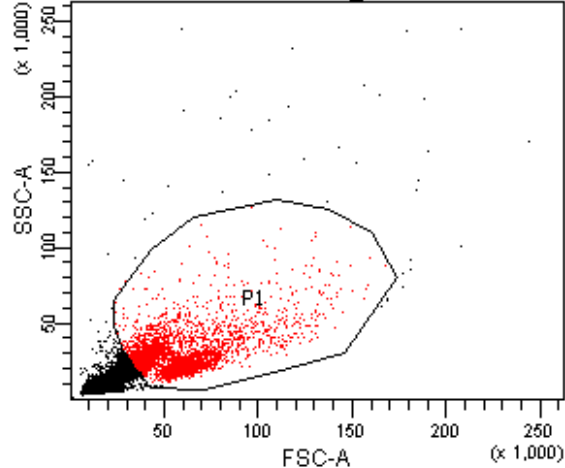


PS HSPs 0.5h

Population	#Events	%Parent	%Total
■ All Events	10,000	####	100.0
■ P1	3,303	33.0	33.0
⊠ P2	1,403	42.5	14.0

PS HSPs 0.5h

Population	#Events	%Parent	FITC-A Mean
■ All Events	10,000	####	559
■ P1	3,303	33.0	601
⊠ P2	1,403	42.5	1,163

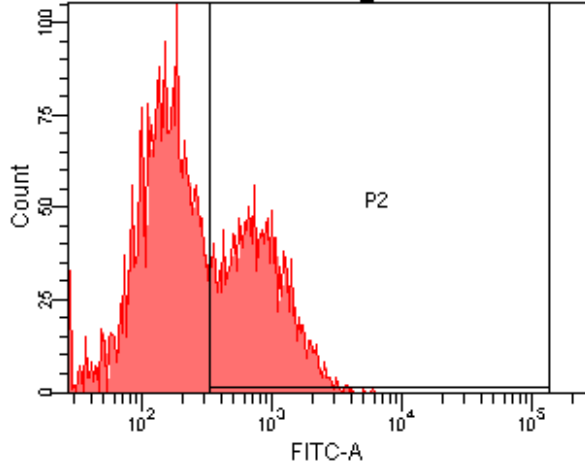
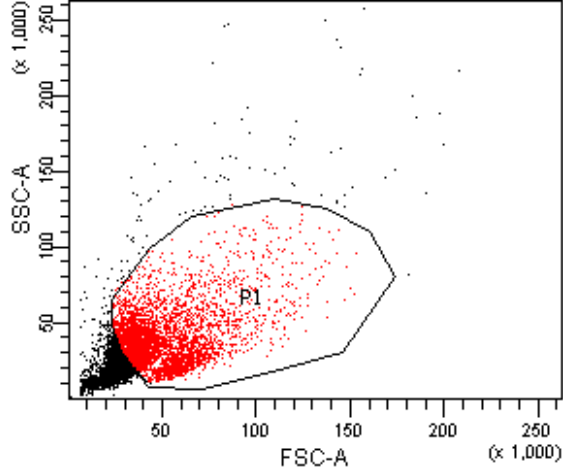


PS HSPs@glucan 0.5h

Population	#Events	%Parent	%Total
■ All Events	10,000	####	100.0
■ P1	3,623	36.2	36.2
⊠ P2	770	21.3	7.7

PS HSPs@glucan 0.5h

Population	#Events	%Parent	FITC-A Mean
■ All Events	10,000	####	1,204
■ P1	3,623	36.2	535
⊠ P2	770	21.3	1,957

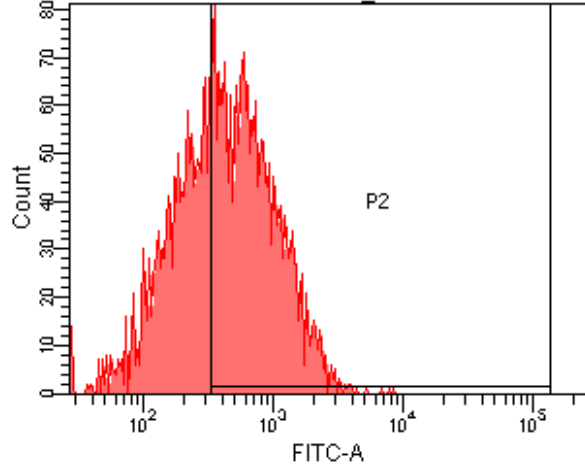
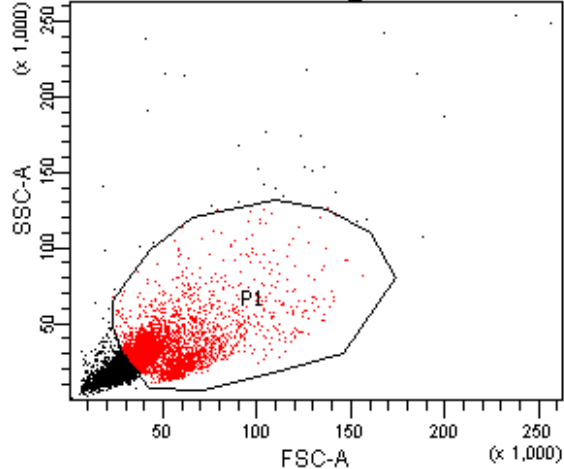


E. coli HSPs 0.5h

Population	#Events	%Parent	%Total
All Events	10,000	####	100.0
P1	4,494	44.9	44.9
P2	1,781	39.6	17.8

E. coli HSPs 0.5h

Population	#Events	%Parent	FITC-A Mean
All Events	10,000	####	327
P1	4,494	44.9	448
P2	1,781	39.6	897

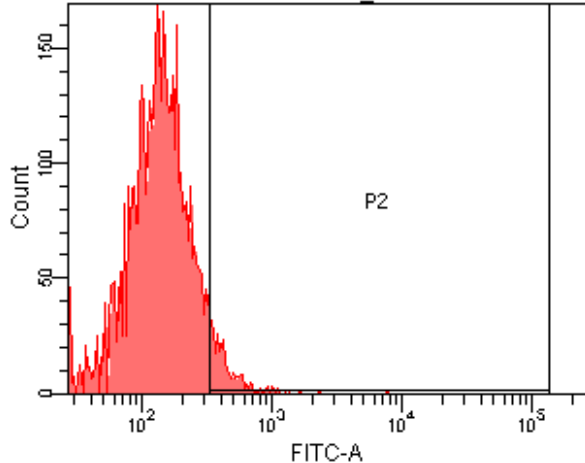
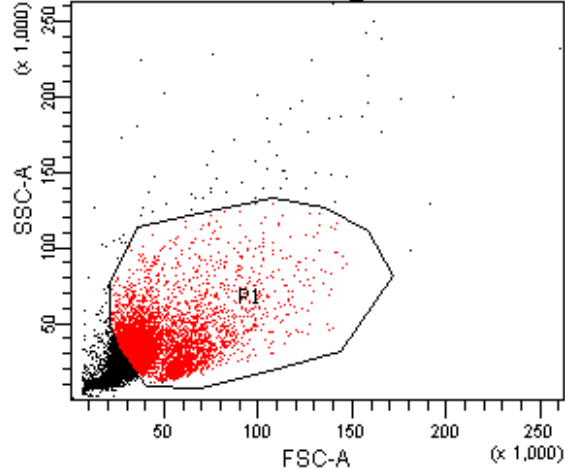


E. coli HSPs@glucan 0.5h

Population	#Events	%Parent	%Total
■ All Events	10,000	####	100.0
■ P1	3,873	38.7	38.7
⊠ P2	2,351	60.7	23.5

E. coli HSPs@glucan 0.5h

Population	#Events	%Parent	FITC-A Mean
■ All Events	10,000	####	406
■ P1	3,873	38.7	580
⊠ P2	2,351	60.7	832

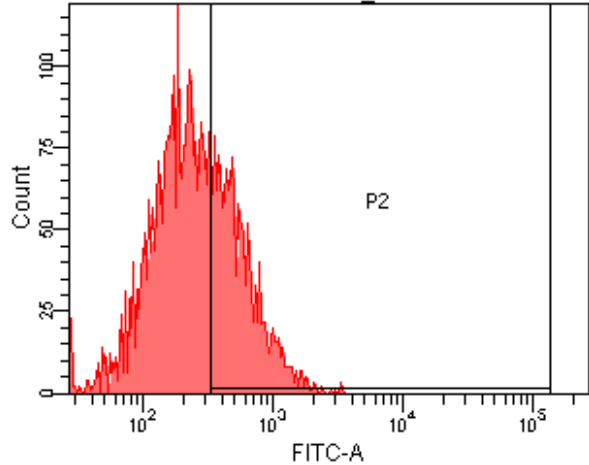
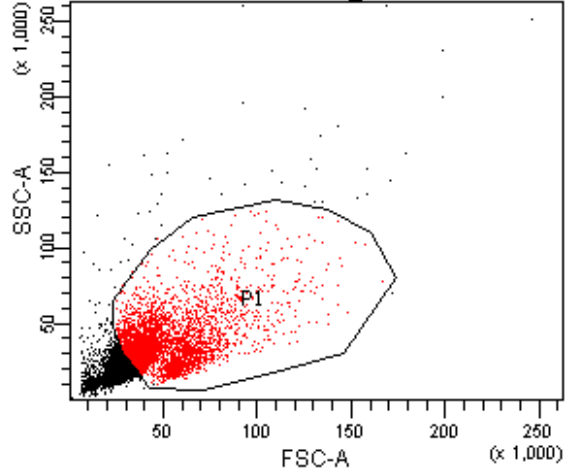


S. aureus HSPs 0.5h

Population	#Events	%Parent	%Total
All Events	10,000	####	100.0
P1	4,886	48.9	48.9
P2	287	5.9	2.9

S. aureus HSPs 0.5h

Population	#Events	%Parent	FITC-A Mean
All Events	10,000	####	124
P1	4,886	48.9	161
P2	287	5.9	485

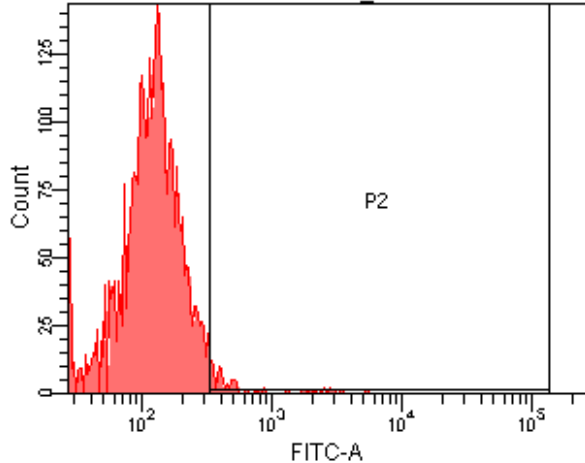
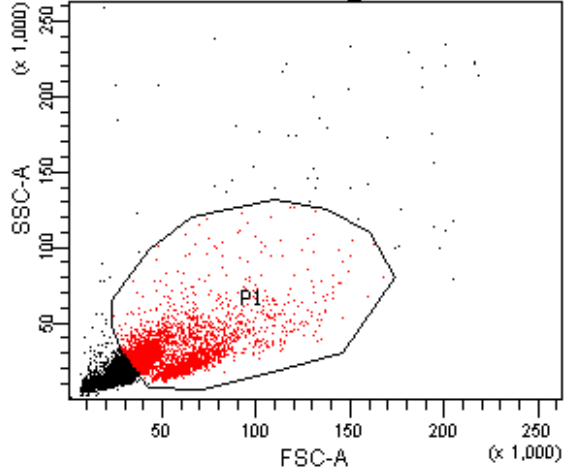


S. aureus HSPs@glucan 0.5h

Population	#Events	%Parent	%Total
■ All Events	10,000	####	100.0
■ P1	4,365	43.6	43.6
⊠ P2	1,586	36.3	15.9

S. aureus HSPs@glucan 0.5h

Population	#Events	%Parent	FITC-A Mean
■ All Events	10,000	####	246
■ P1	4,365	43.6	334
⊠ P2	1,586	36.3	610

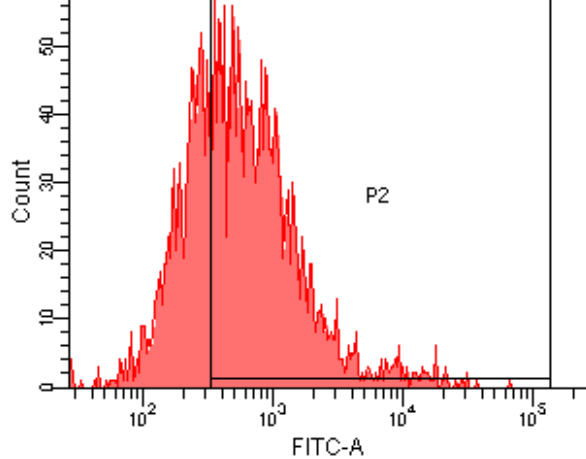
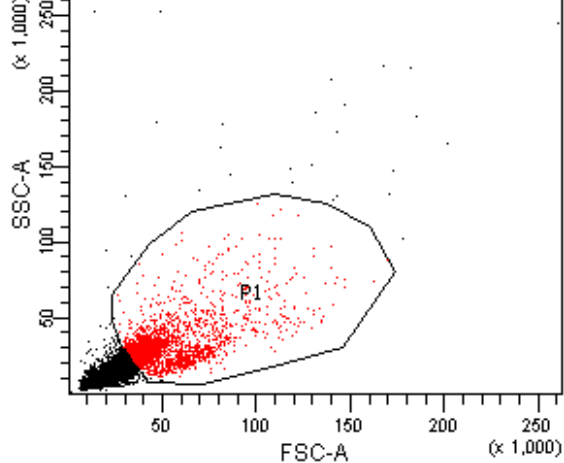


FITC-OVA 1h

Population	#Events	%Parent	%Total
■ All Events	10,000	####	100.0
■ P1	3,656	36.6	36.6
⊠ P2	107	2.9	1.1

FITC-OVA 1h

Population	#Events	%Parent	FITC-A Mean
■ All Events	10,000	####	102
■ P1	3,656	36.6	147
⊠ P2	107	2.9	806

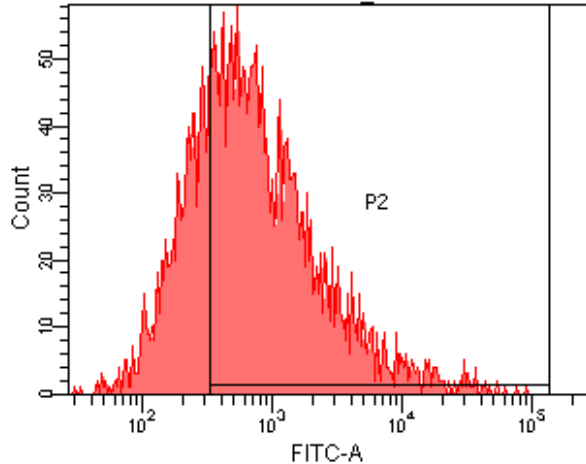
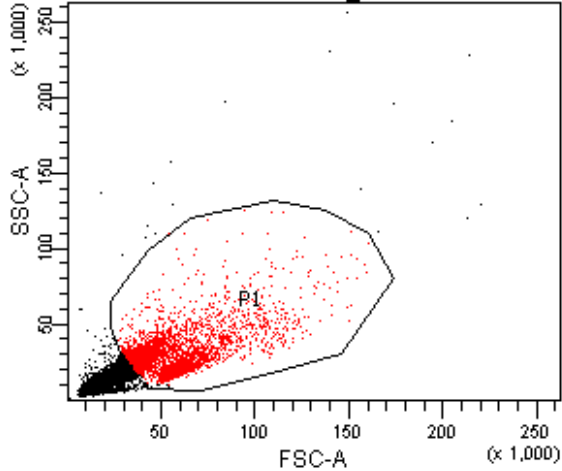


PS HSPs 1h

Population	#Events	%Parent	%Total
All Events	10,000	####	100.0
P1	2,943	29.4	29.4
P2	2,010	68.3	20.1

PS HSPs 1h

Population	#Events	%Parent	FITC-A Mean
All Events	10,000	####	833
P1	2,943	29.4	1,094
P2	2,010	68.3	1,504

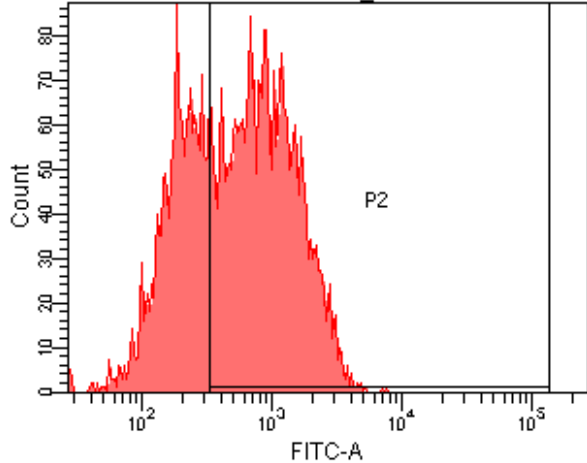
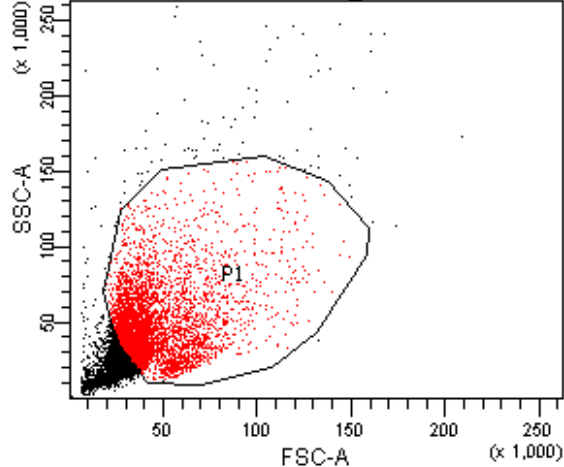


PS HSPs@glucan 1h

Population	#Events	%Parent	%Total
■ All Events	10,000	####	100.0
■ P1	3,500	35.0	35.0
⊠ P2	2,565	73.3	25.7

PS HSPs@glucan 1h

Population	#Events	%Parent	FITC-A Mean
■ All Events	10,000	####	1,990
■ P1	3,500	35.0	1,698
⊠ P2	2,565	73.3	2,240

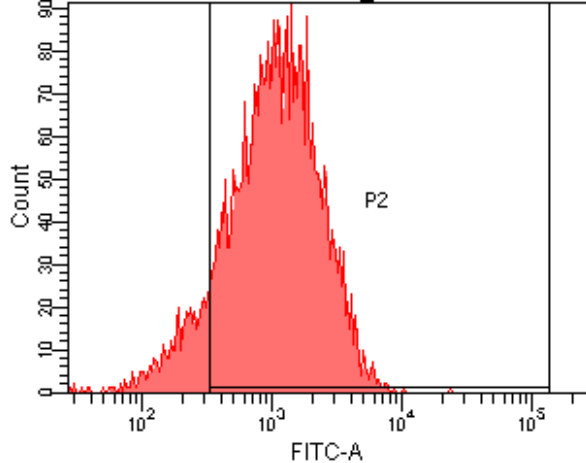
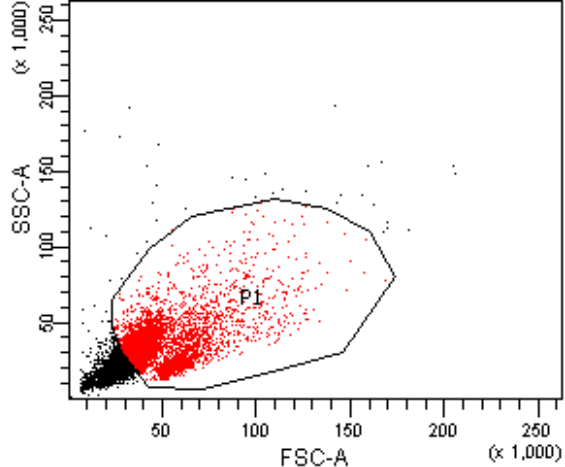


E.coli HSPs 1h

Population	#Events	%Parent	%Total
All Events	10,000	####	100.0
P1	4,999	50.0	50.0
P2	3,252	65.1	32.5

E.coli HSPs 1h

Population	#Events	%Parent	FITC-A Mean
All Events	10,000	####	553
P1	4,999	50.0	765
P2	3,252	65.1	1,071

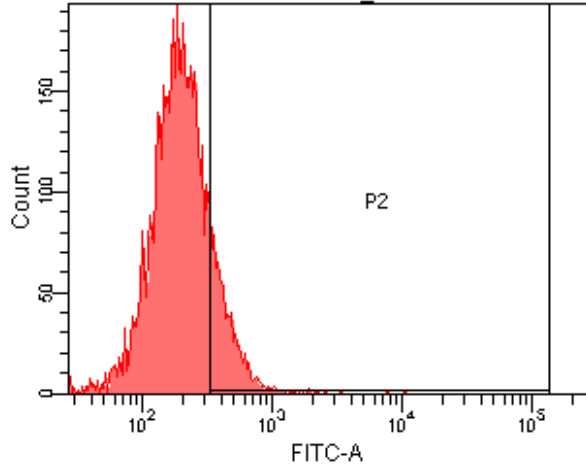
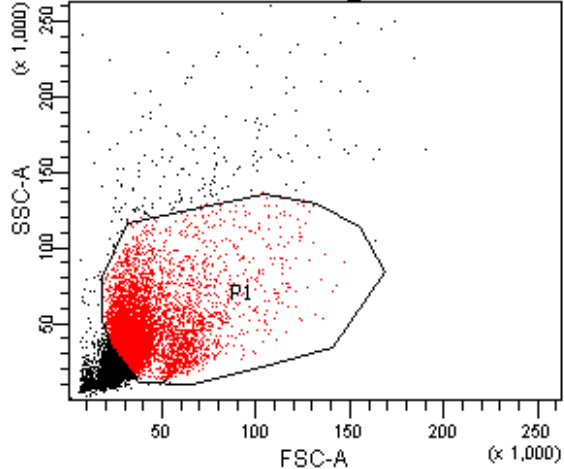


E.coli HSPs@glucan 1h

Population	#Events	%Parent	%Total
■ All Events	10,000	####	100.0
■ P1	4,410	44.1	44.1
⊠ P2	3,952	89.6	39.5

E.coli HSPs@glucan 1h

Population	#Events	%Parent	FITC-A Mean
■ All Events	10,000	####	903
■ P1	4,410	44.1	1,320
⊠ P2	3,952	89.6	1,449

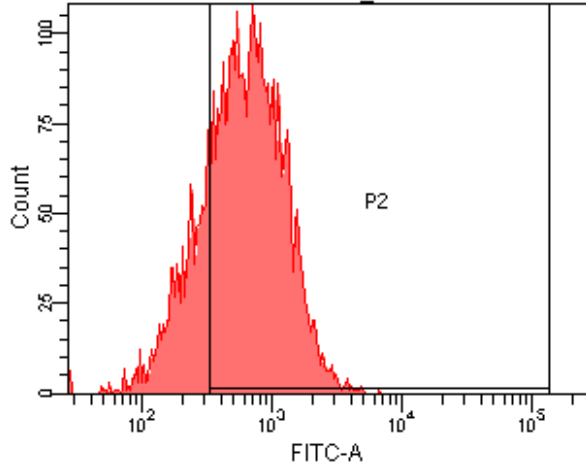
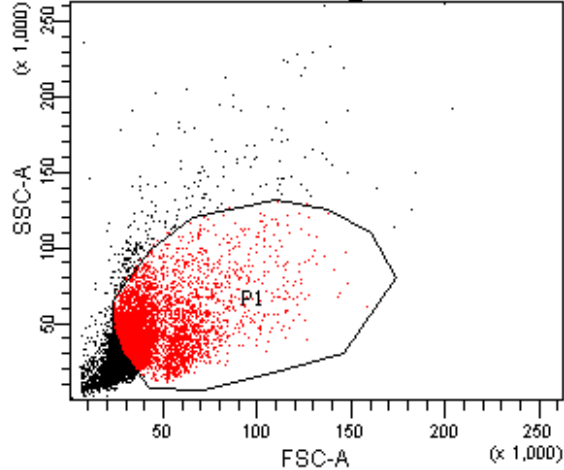


S. aureus HSPs 1h

Population	#Events	%Parent	%Total
■ All Events	10,000	####	100.0
■ P1	5,619	56.2	56.2
⊠ P2	878	15.6	8.8

S. aureus HSPs 1h

Population	#Events	%Parent	FITC-A Mean
■ All Events	10,000	####	196
■ P1	5,619	56.2	229
⊠ P2	878	15.6	488

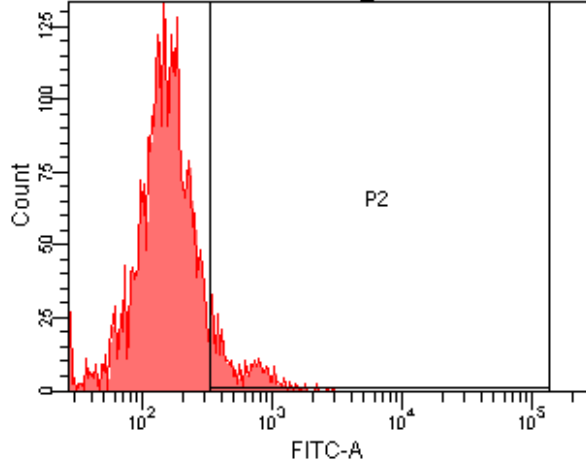
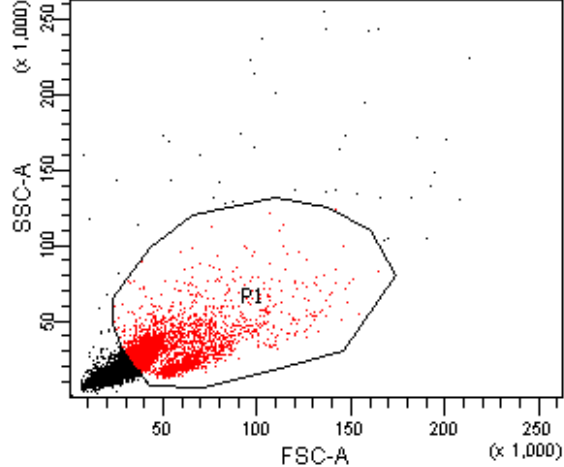


S. aureus HSPs@glucan 1h

Population	#Events	%Parent	%Total
■ All Events	10,000	####	100.0
■ P1	4,904	49.0	49.0
☒ P2	3,836	78.2	38.4

S. aureus HSPs@glucan 1h

Population	#Events	%Parent	FITC-A Mean
■ All Events	10,000	####	558
■ P1	4,904	49.0	726
☒ P2	3,836	78.2	868

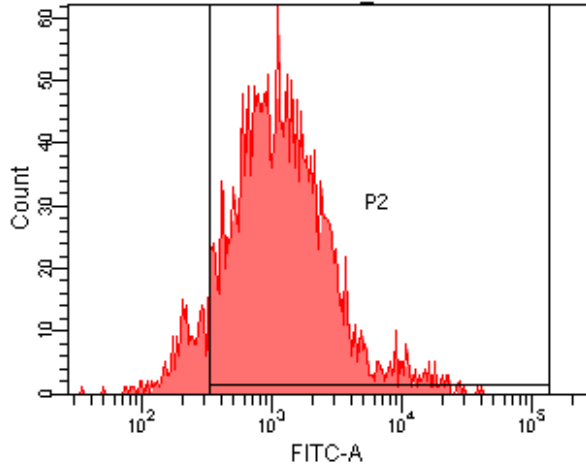
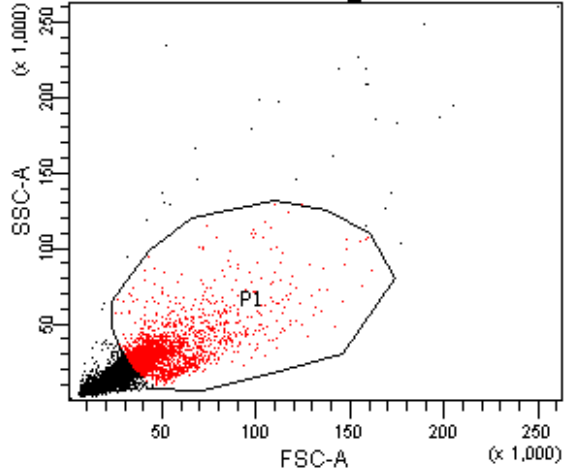


FITC-OVA 2h

Population	#Events	%Parent	%Total
■ All Events	10,000	####	100.0
■ P1	3,592	35.9	35.9
⊠ P2	353	9.8	3.5

FITC-OVA 2h

Population	#Events	%Parent	FITC-A Mean
■ All Events	10,000	####	129
■ P1	3,592	35.9	197
⊠ P2	353	9.8	614

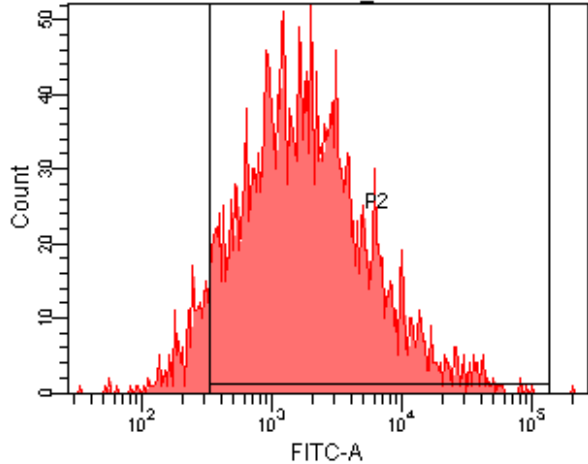
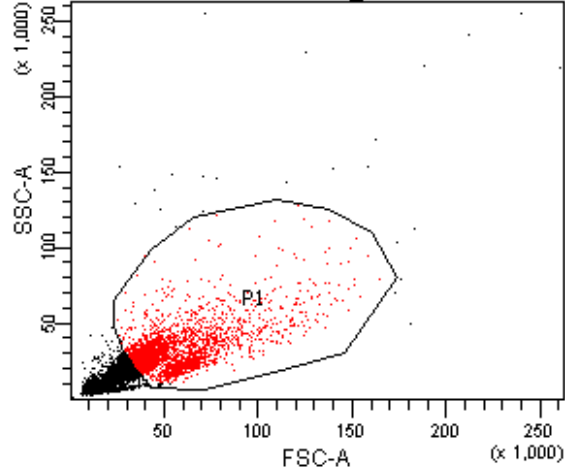


PS HSPs 2h

Population	#Events	%Parent	%Total
All Events	10,000	####	100.0
P1	2,769	27.7	27.7
P2	2,540	91.7	25.4

PS HSPs 2h

Population	#Events	%Parent	FITC-A Mean
All Events	10,000	####	1,230
P1	2,769	27.7	1,849
P2	2,540	91.7	1,996

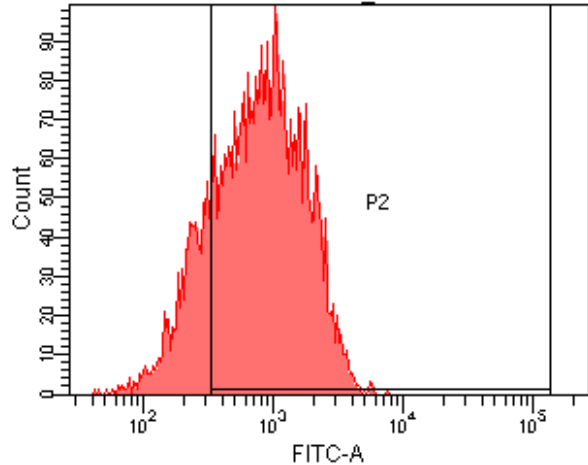
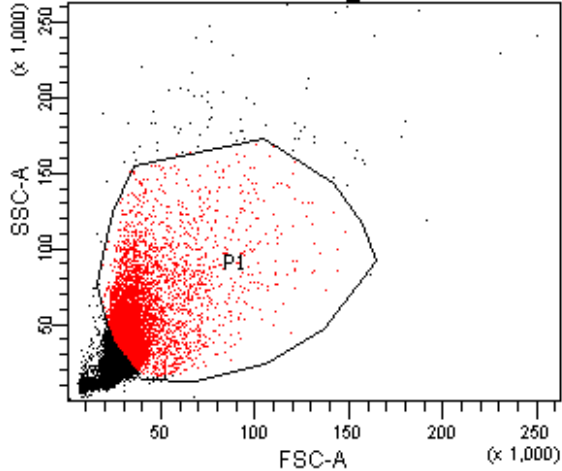


PS HSPs@glucan 2h

Population	#Events	%Parent	%Total
■ All Events	10,000	####	100.0
■ P1	3,089	30.9	30.9
☒ P2	2,886	93.4	28.9

PS HSPs@glucan 2h

Population	#Events	%Parent	FITC-A Mean
■ All Events	10,000	####	2,846
■ P1	3,089	30.9	3,602
☒ P2	2,886	93.4	3,766

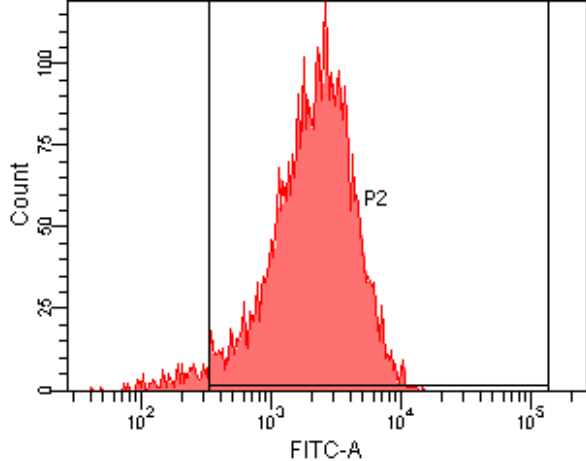
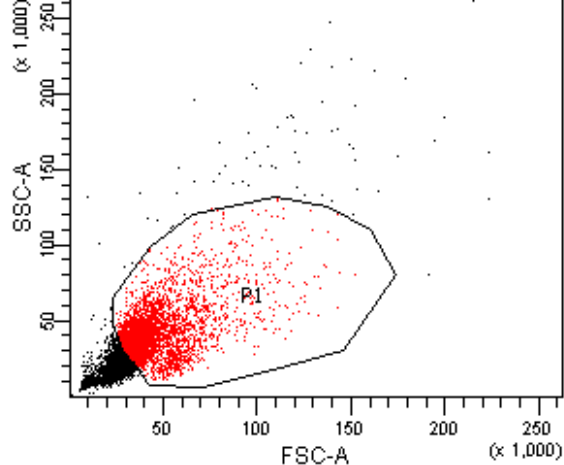


E. coli HSPs 2h

Population	#Events	%Parent	%Total
■ All Events	10,000	####	100.0
■ P1	4,776	47.8	47.8
⊠ P2	3,903	81.7	39.0

E. coli HSPs 2h

Population	#Events	%Parent	FITC-A Mean
■ All Events	10,000	####	651
■ P1	4,776	47.8	972
⊠ P2	3,903	81.7	1,140

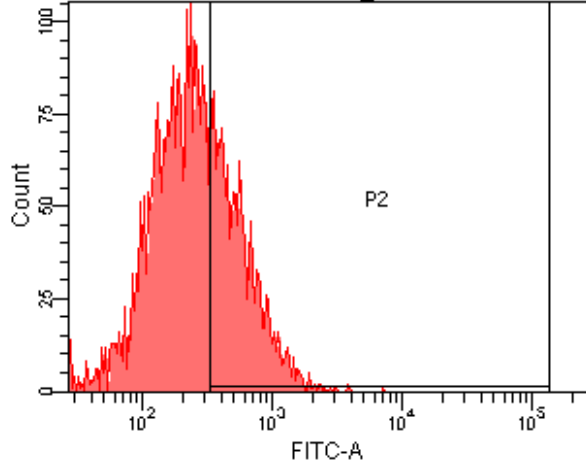
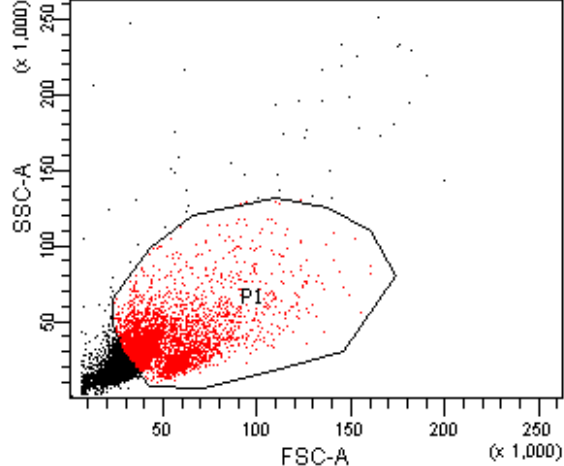


E.coli HSPs@glucan 2h

Population	#Events	%Parent	%Total
■ All Events	10,000	####	100.0
■ P1	4,615	46.2	46.2
☒ P2	4,473	96.9	44.7

E. coli HSPs@glucan 2h

Population	#Events	%Parent	FITC-A Mean
■ All Events	10,000	####	1,694
■ P1	4,615	46.2	2,521
☒ P2	4,473	96.9	2,595

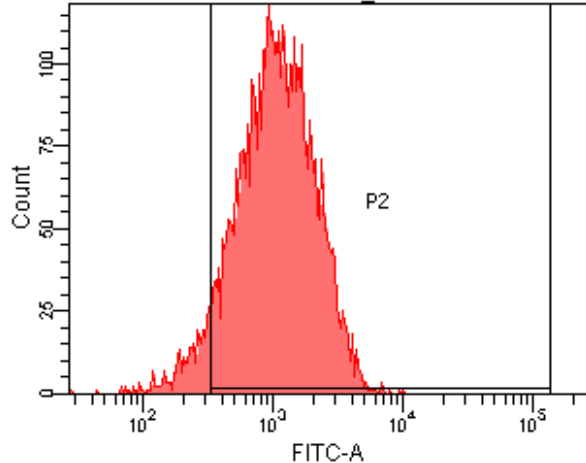
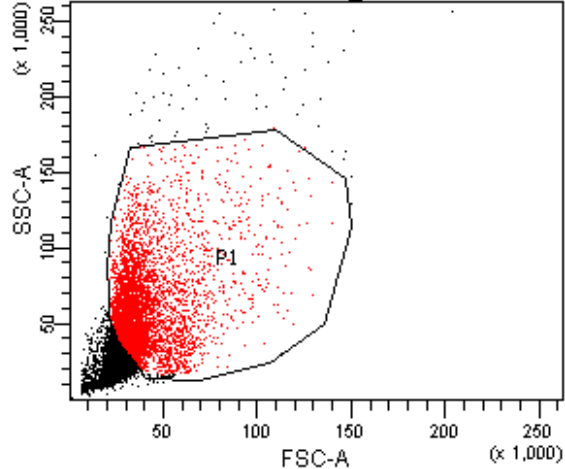


S. aureus HSPs 2h

Population	#Events	%Parent	%Total
■ All Events	10,000	####	100.0
■ P1	4,296	43.0	43.0
☒ P2	1,524	35.5	15.2

S. aureus HSPs 2h

Population	#Events	%Parent	FITC-A Mean
■ All Events	10,000	####	242
■ P1	4,296	43.0	333
☒ P2	1,524	35.5	614

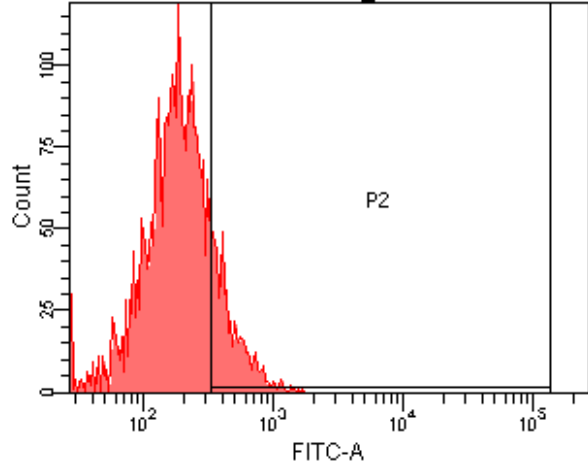
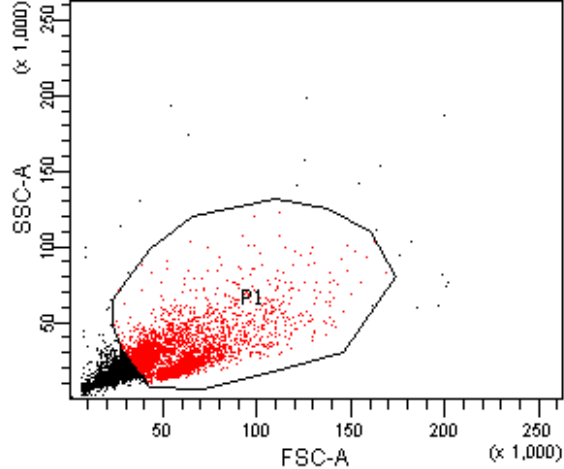


S. aureus HSPs@glucan 2h

Population	#Events	%Parent	%Total
All Events	10,000	####	100.0
P1	5,091	50.9	50.9
P2	4,784	94.0	47.8

S. aureus HSPs@glucan 2h

Population	#Events	%Parent	FITC-A Mean
All Events	10,000	####	876
P1	5,091	50.9	1,257
P2	4,784	94.0	1,323

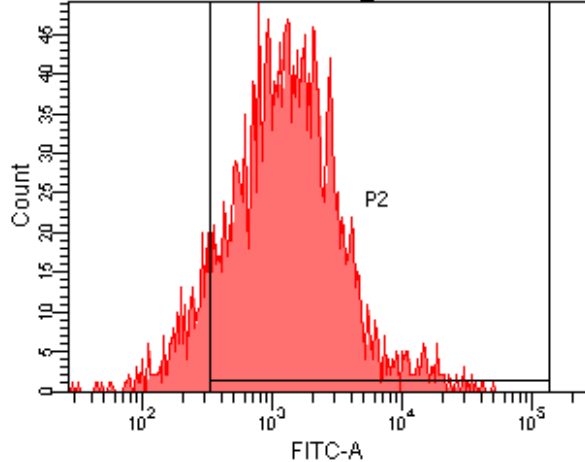
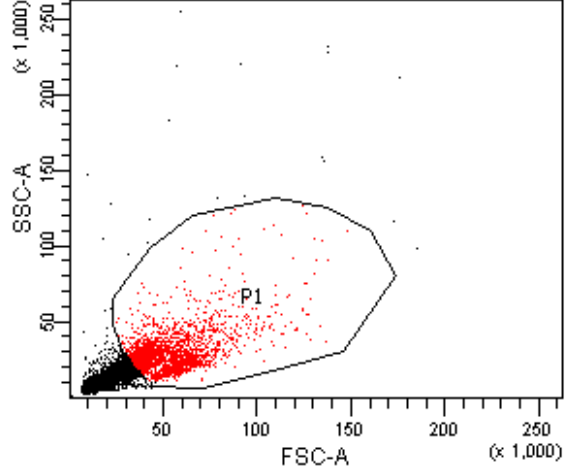


FITC-OVA 4h

Population	#Events	%Parent	%Total
■ All Events	10,000	####	100.0
■ P1	3,512	35.1	35.1
⊠ P2	595	16.9	5.9

FITC-OVA 4h

Population	#Events	%Parent	FITC-A Mean
■ All Events	10,000	####	152
■ P1	3,512	35.1	225
⊠ P2	595	16.9	493

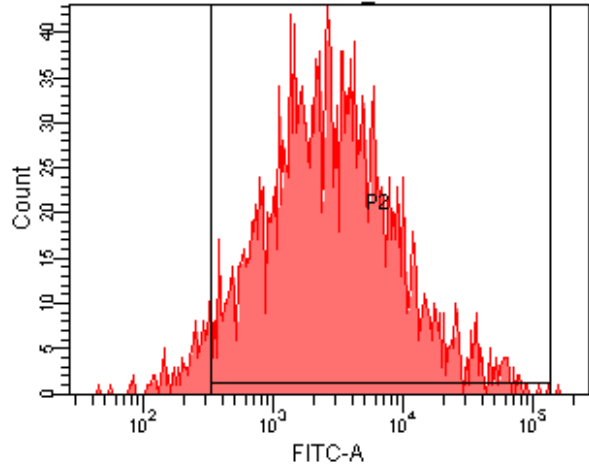
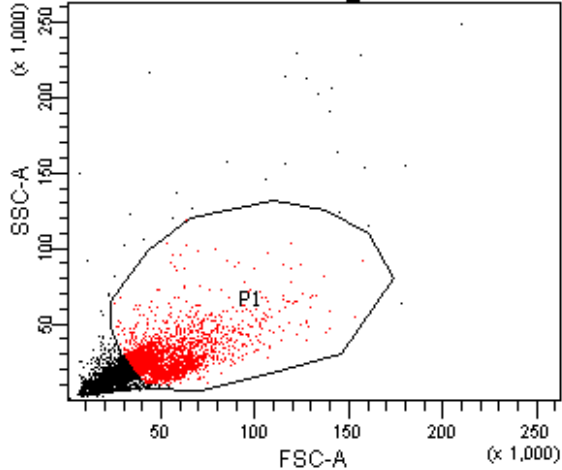


PS HSPs 4h

Population	#Events	%Parent	%Total
■ All Events	10,000	####	100.0
■ P1	2,705	27.0	27.0
☒ P2	2,437	90.1	24.4

PS HSPs 4h

Population	#Events	%Parent	FITC-A Mean
■ All Events	10,000	####	1,240
■ P1	2,705	27.0	2,111
☒ P2	2,437	90.1	2,319

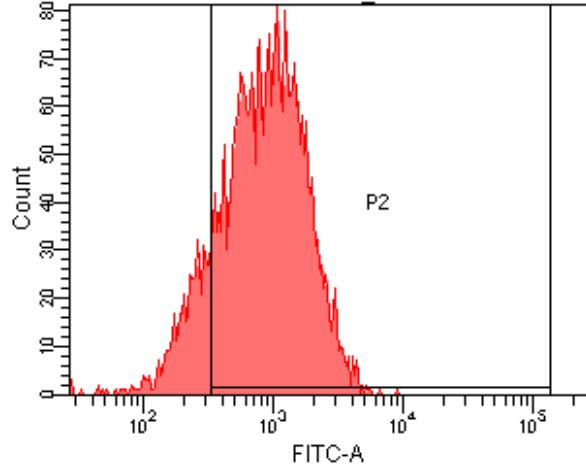
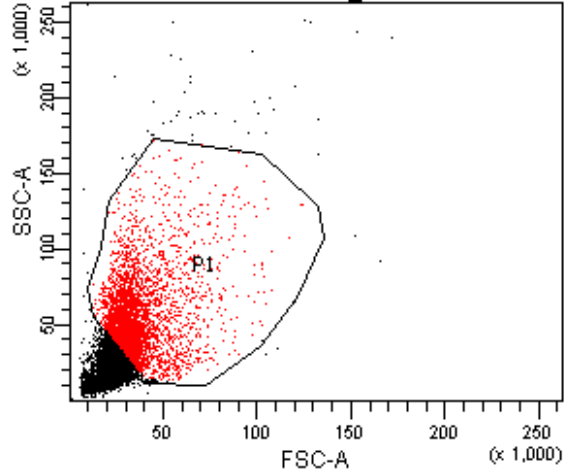


PS HSPs@glucan 4h

Population	#Events	%Parent	%Total
■ All Events	10,000	####	100.0
■ P1	2,668	26.7	26.7
⊠ P2	2,549	95.5	25.5

PS HSPs@glucan 4h

Population	#Events	%Parent	FITC-A Mean
■ All Events	10,000	####	4,236
■ P1	2,668	26.7	5,661
⊠ P2	2,549	95.5	5,855

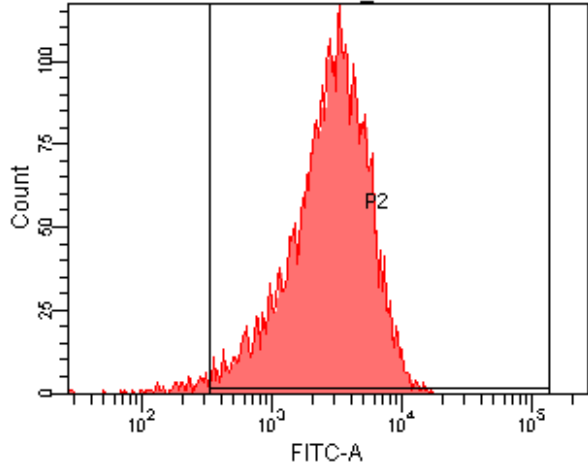
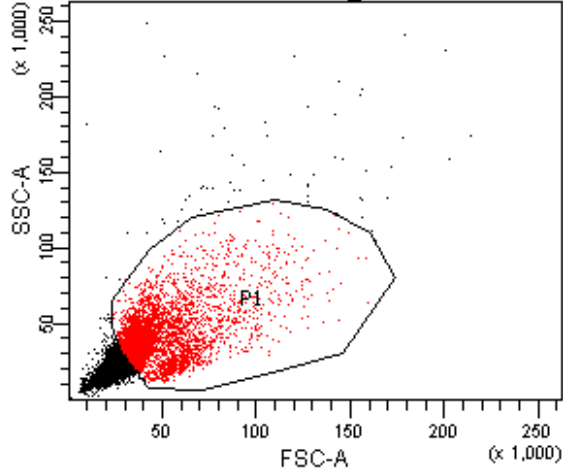


E. coli HSPs 4h

Population	#Events	%Parent	%Total
All Events	10,000	####	100.0
P1	3,744	37.4	37.4
P2	3,226	86.2	32.3

E. coli HSPs 4h

Population	#Events	%Parent	FITC-A Mean
All Events	10,000	####	658
P1	3,744	37.4	1,024
P2	3,226	86.2	1,153

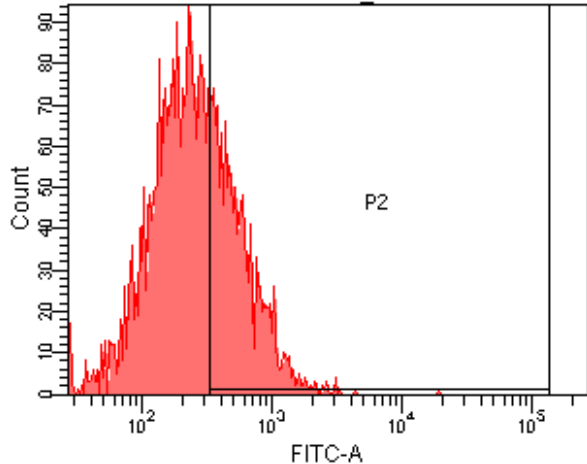
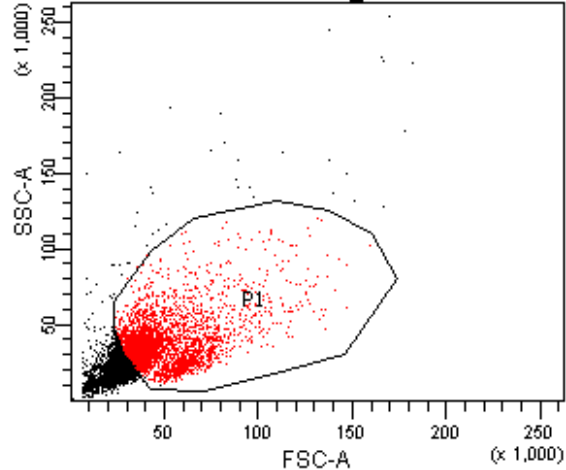


E. coli HSPs@glucan 4h

Population	#Events	%Parent	%Total
■ All Events	10,000	####	100.0
■ P1	4,503	45.0	45.0
⊠ P2	4,430	98.4	44.3

E. coli HSPs@glucan 4h

Population	#Events	%Parent	FITC-A Mean
■ All Events	10,000	####	2,194
■ P1	4,503	45.0	3,255
⊠ P2	4,430	98.4	3,305

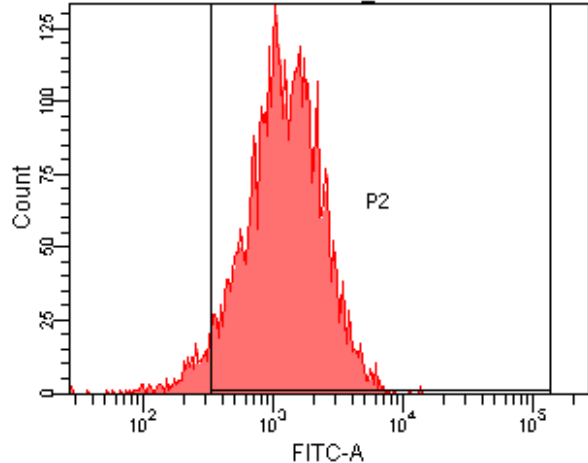
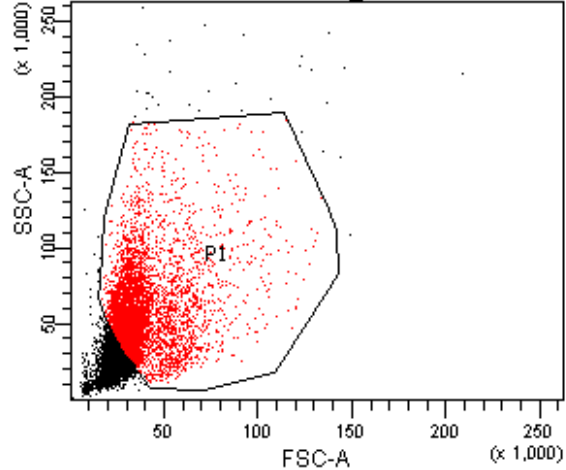


S. aureus HSPs 4h

Population	#Events	%Parent	%Total
■ All Events	10,000	####	100.0
■ P1	4,041	40.4	40.4
⊠ P2	1,437	35.6	14.4

S. aureus HSPs 4h

Population	#Events	%Parent	FITC-A Mean
■ All Events	10,000	####	238
■ P1	4,041	40.4	337
⊠ P2	1,437	35.6	626



S. aureus HSPs@glucan 4h

Population	#Events	%Parent	%Total
All Events	10,000	####	100.0
P1	5,201	52.0	52.0
P2	4,971	95.6	49.7

S. aureus HSPs@glucan 4h

Population	#Events	%Parent	FITC-A Mean
All Events	10,000	####	1,005
P1	5,201	52.0	1,432
P2	4,971	95.6	1,487