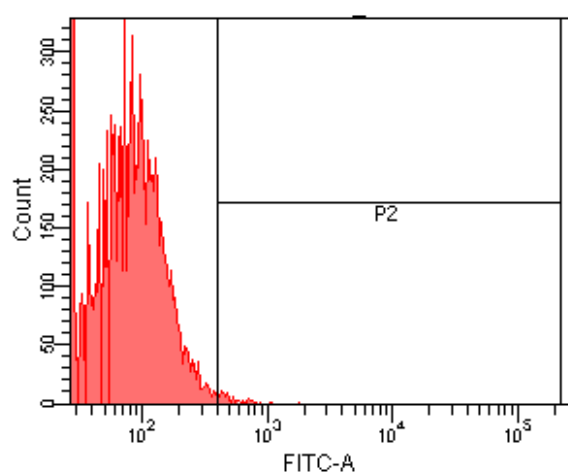
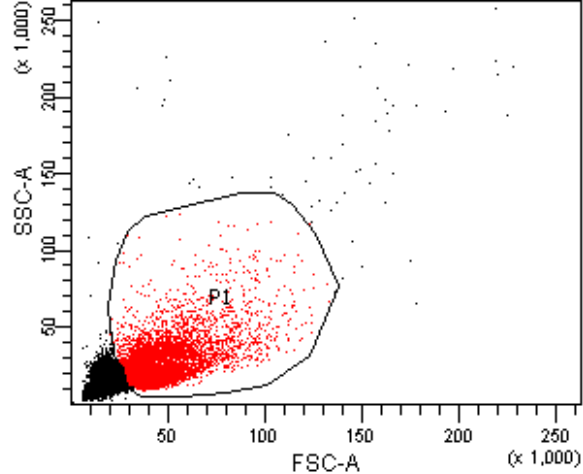


Blank			
Population	#Events	%Parent	%Total
All Events	30,903	####	100.0
P1	10,000	32.4	32.4
P2	3	0.0	0.0

Blank			
Population	#Events	%Parent	FITC-A Mean
All Events	30,903	####	36
P1	10,000	32.4	52
P2	3	0.0	544

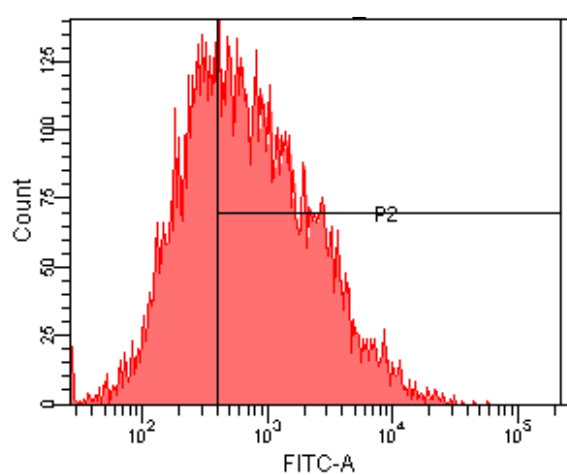
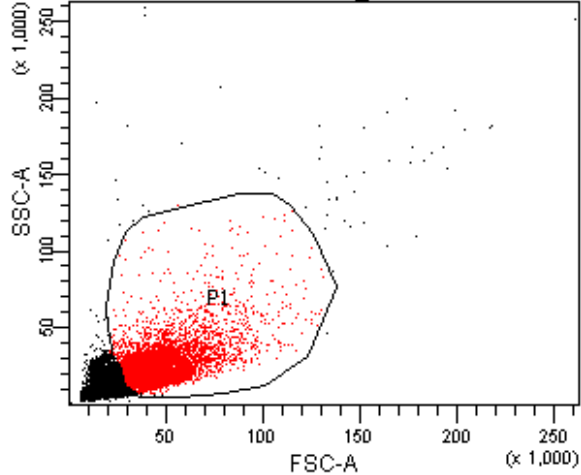


FITC-OVA No inhibitor

Population	#Events	%Parent	%Total
All Events	32,061	####	100.0
P1	10,000	31.2	31.2
P2	76	0.8	0.2

FITC-OVA No inhibitor

Population	#Events	%Parent	FITC-A Mean
All Events	32,061	####	58
P1	10,000	31.2	90
P2	76	0.8	560

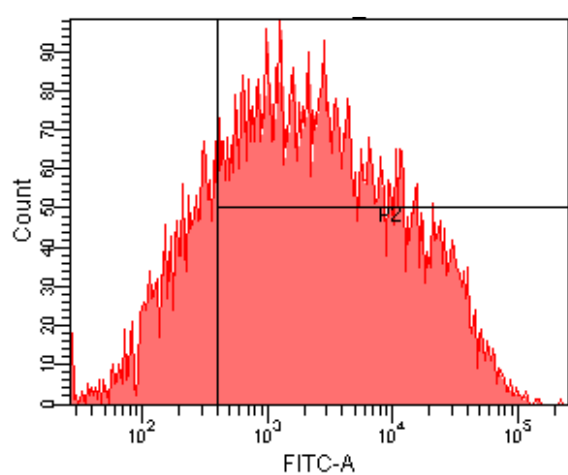
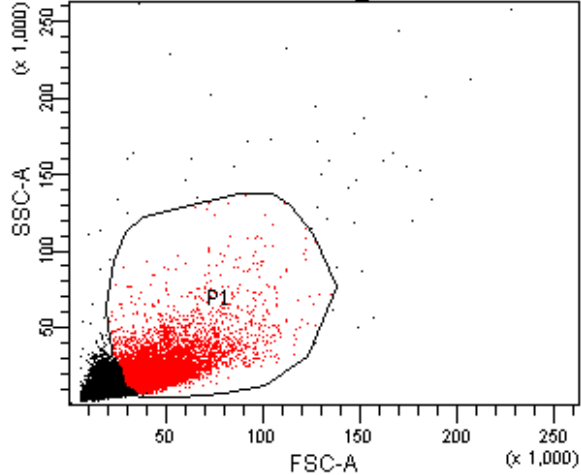


PS HSPs No inhibitor

Population	#Events	%Parent	%Total
All Events	35,411	####	100.0
P1	10,000	28.2	28.2
P2	6,500	65.0	18.4

PS HSPs No inhibitor

Population	#Events	%Parent	FITC-A Mean
All Events	35,411	####	921
P1	10,000	28.2	1,435
P2	6,500	65.0	2,083

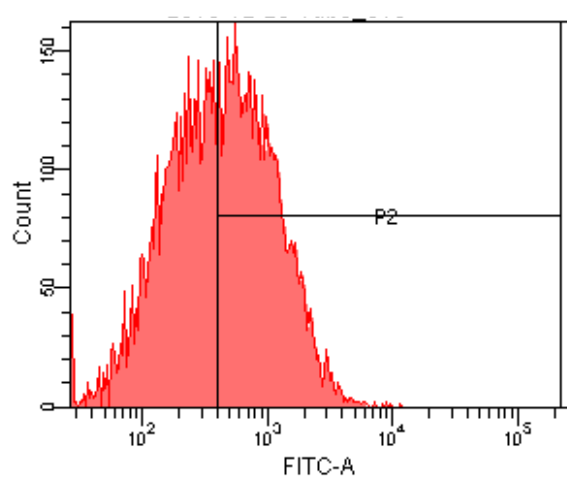
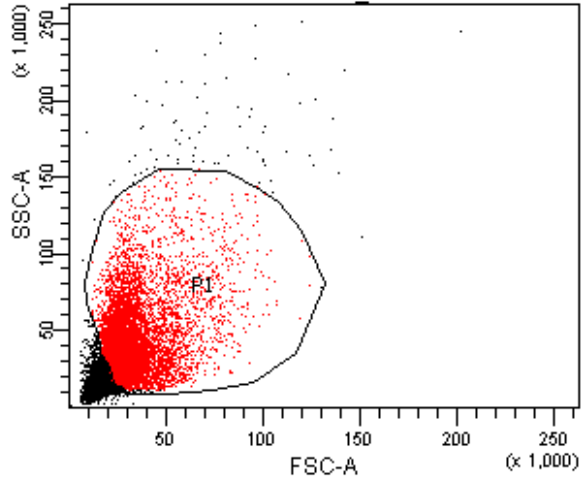


PS HSPs@glucan No inhibitor

Population	#Events	%Parent	%Total
■ All Events	33,221	####	100.0
■ P1	10,000	30.1	30.1
⊠ P2	8,149	81.5	24.5

PS HSPs@glucan No inhibitor

Population	#Events	%Parent	FITC-A Mean
■ All Events	33,221	####	4,600
■ P1	10,000	30.1	7,043
⊠ P2	8,149	81.5	8,594

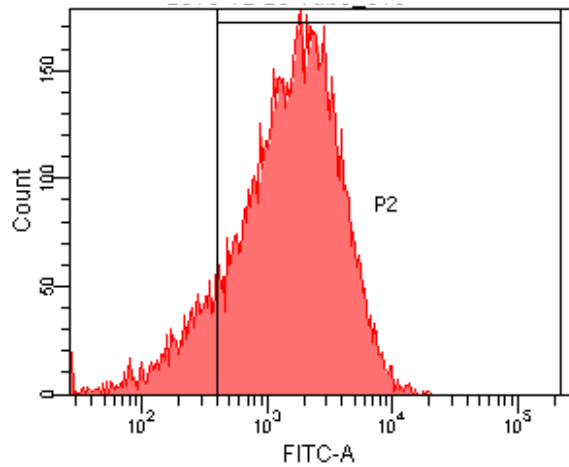
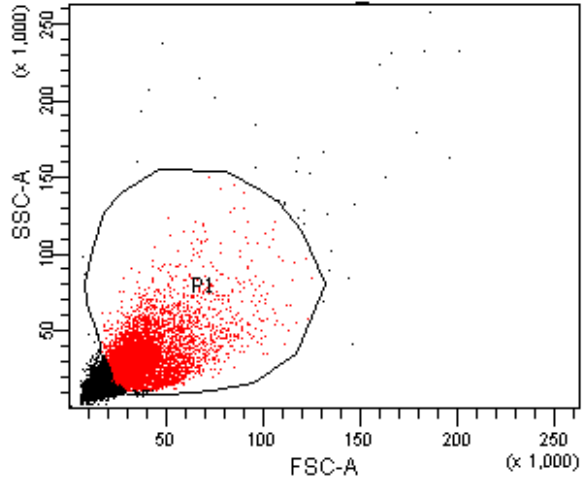


E. coli HSPs No inhibitor

Population	#Events	%Parent	%Total
All Events	16,950	####	100.0
P1	10,000	59.0	59.0
P2	5,288	52.9	31.2

E. coli HSPs No inhibitor

Population	#Events	%Parent	FITC-A Mean
All Events	16,950	####	474
P1	10,000	59.0	643
P2	5,288	52.9	1,031

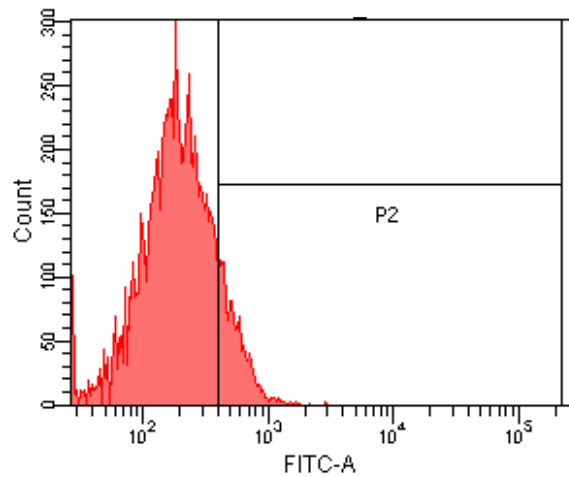
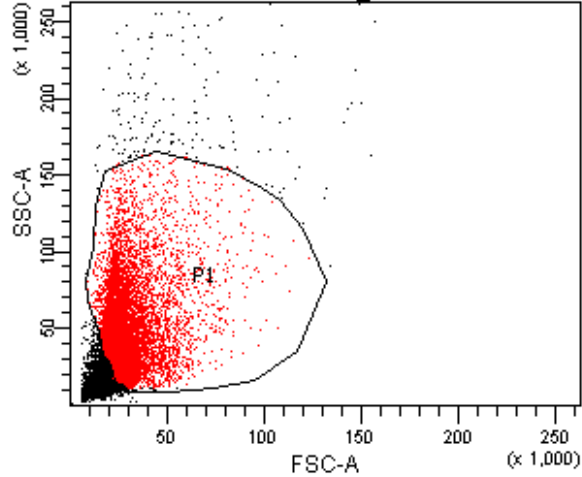


E. coli HSPs@glucan No inhibitor

Population	#Events	%Parent	%Total
All Events	18,048	####	100.0
P1	10,000	55.4	55.4
P2	8,791	87.9	48.7

E. coli HSPs@glucan No inhibitor

Population	#Events	%Parent	FITC-A Mean
All Events	18,048	####	1,441
P1	10,000	55.4	2,045
P2	8,791	87.9	2,295

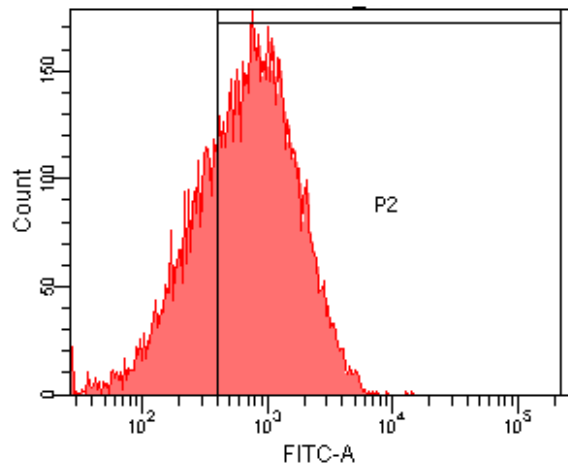
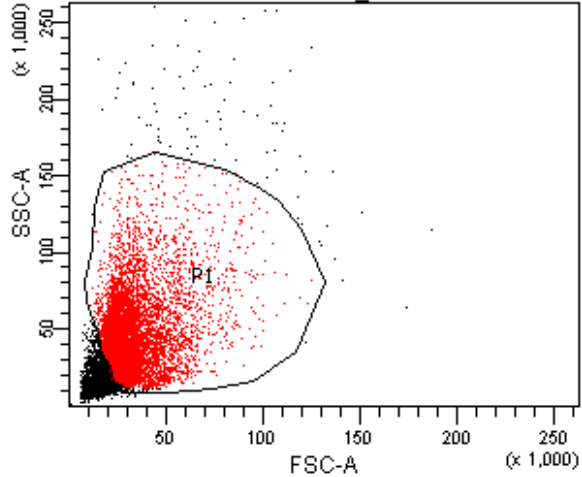


S. aureus HSPs No inhibitor

Population	#Events	%Parent	%Total
All Events	15,741	####	100.0
P1	10,074	64.0	64.0
P2	1,363	13.5	8.7

S. aureus HSPs No inhibitor

Population	#Events	%Parent	FITC-A Mean
All Events	15,741	####	196
P1	10,074	64.0	237
P2	1,363	13.5	574

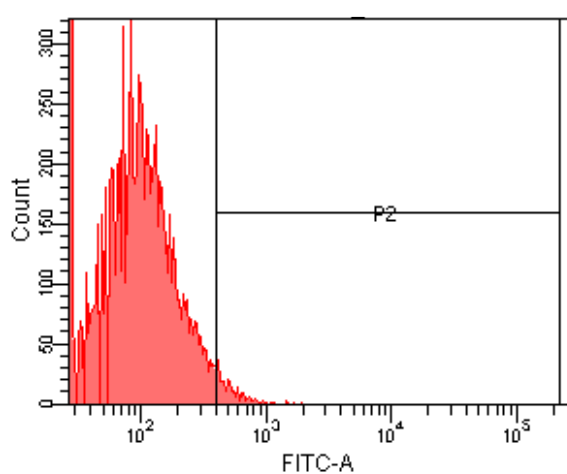
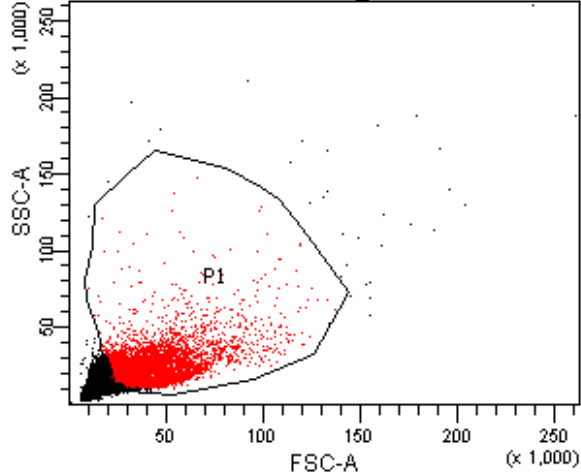


S. aureus HSPs@glucan No inhibitor

Population	#Events	%Parent	%Total
All Events	16,825	####	100.0
P1	10,000	59.4	59.4
P2	7,146	71.5	42.5

S. aureus HSPs@glucan No inhibitor

Population	#Events	%Parent	FITC-A Mean
All Events	16,825	####	706
P1	10,000	59.4	953
P2	7,146	71.5	1,241

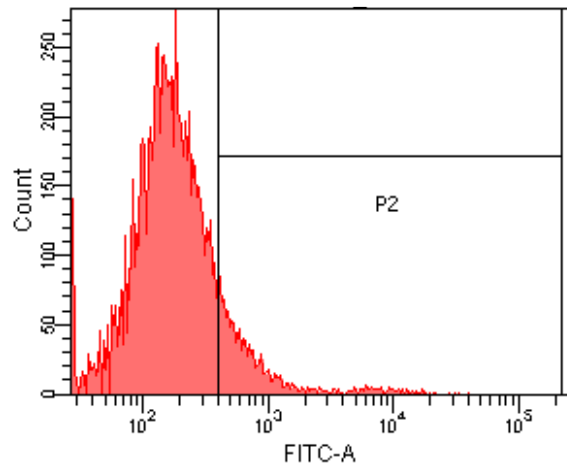
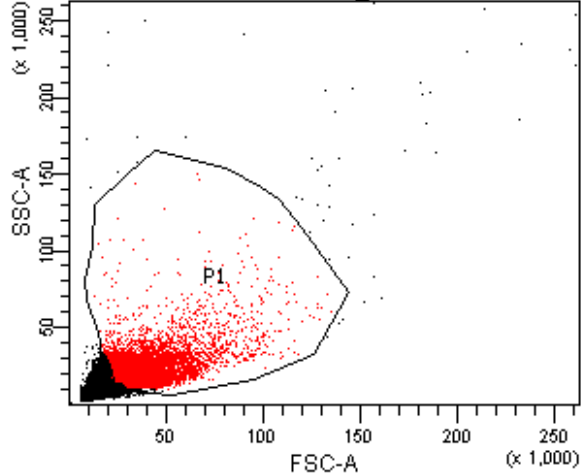


FITC-OVA Genistein

Population	#Events	%Parent	%Total
All Events	25,211	###	100.0
P1	10,027	39.8	39.8
P2	262	2.6	1.0

FITC-OVA Genistein

Population	#Events	%Parent	FITC-A Mean
All Events	25,211	###	84
P1	10,027	39.8	119
P2	262	2.6	550

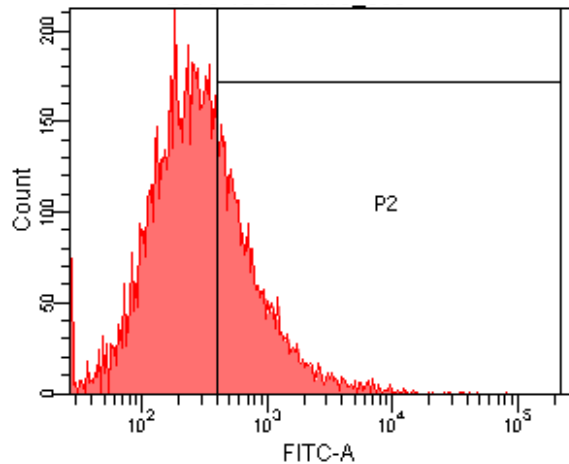
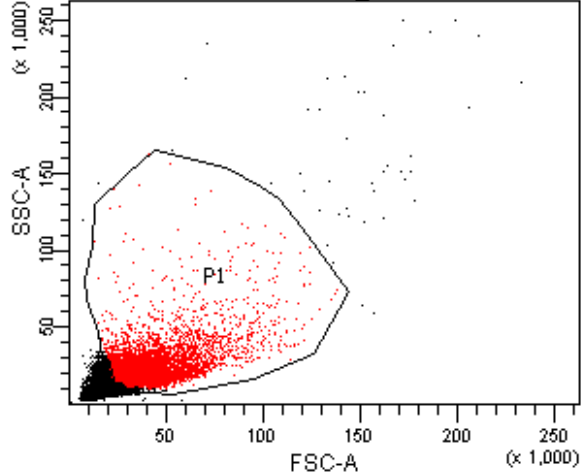


PS HSPs Genistein

Population	#Events	%Parent	%Total
■ All Events	25,605	####	100.0
■ P1	10,000	39.1	39.1
⊠ P2	1,342	13.4	5.2

PS HSPs Genistein

Population	#Events	%Parent	FITC-A Mean
■ All Events	25,605	####	327
■ P1	10,000	39.1	343
⊠ P2	1,342	13.4	1,477

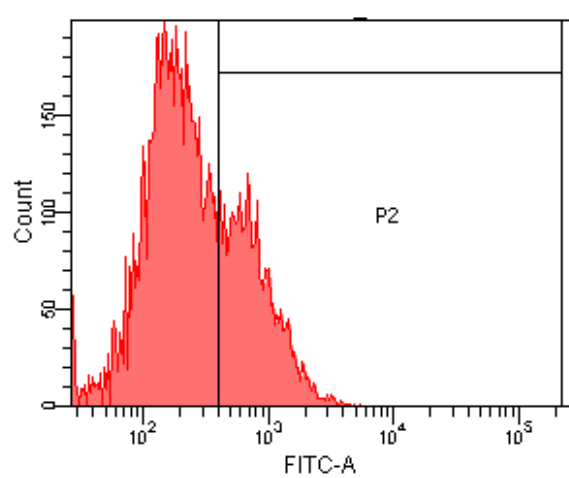
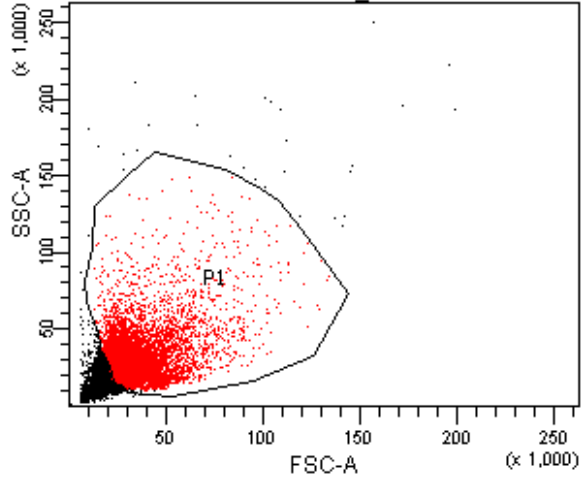


PS HSPs@glucan Genistein

Population	#Events	%Parent	%Total
All Events	23,790	####	100.0
P1	10,000	42.0	42.0
P2	3,328	33.3	14.0

PS HSPs@glucan Genistein

Population	#Events	%Parent	FITC-A Mean
All Events	23,790	####	772
P1	10,000	42.0	536
P2	3,328	33.3	1,207

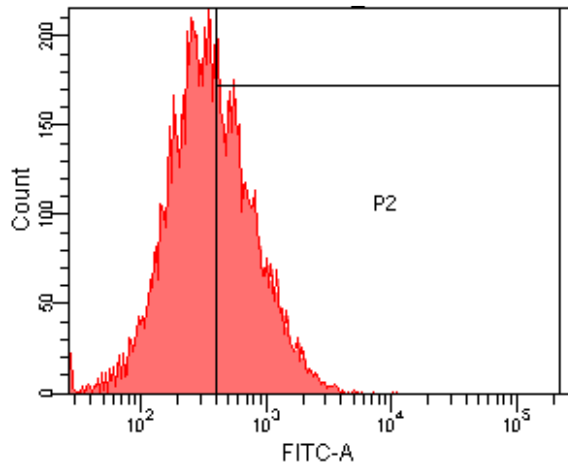
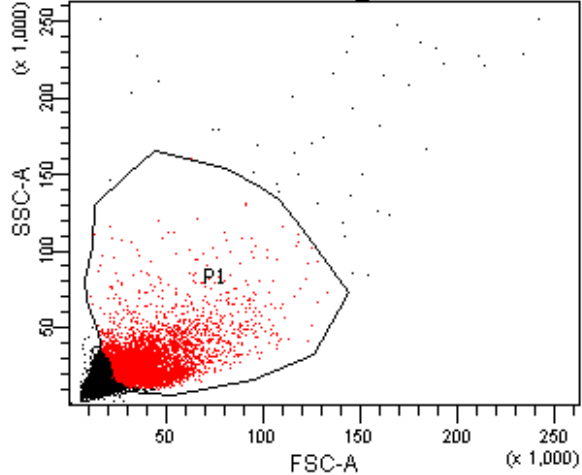


E. coli HSPs Genistein

Population	#Events	%Parent	%Total
All Events	18,795	####	100.0
P1	10,000	53.2	53.2
P2	3,157	31.6	16.8

E. coli HSPs Genistein

Population	#Events	%Parent	FITC-A Mean
All Events	18,795	####	297
P1	10,000	53.2	399
P2	3,157	31.6	872

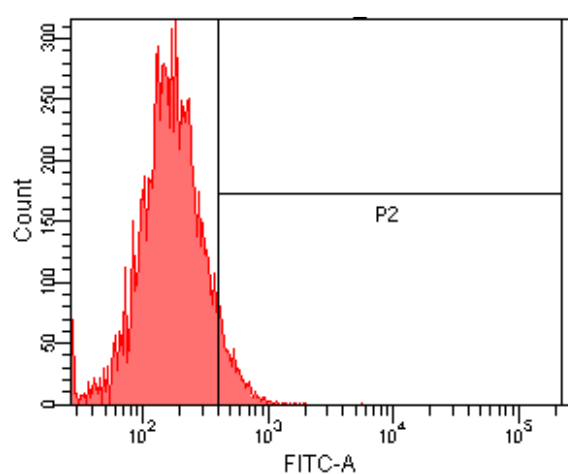
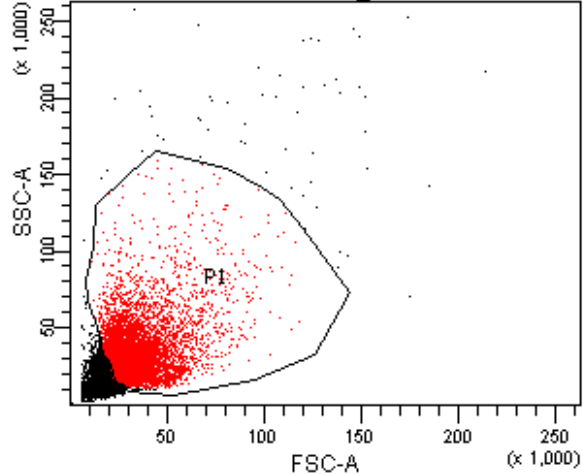


E. coli HSPs@glucan Genistein

Population	#Events	%Parent	%Total
■ All Events	19,696	####	100.0
■ P1	10,000	50.8	50.8
⊠ P2	4,277	42.8	21.7

E. coli HSPs@glucan Genistein

Population	#Events	%Parent	FITC-A Mean
■ All Events	19,696	####	369
■ P1	10,000	50.8	488
⊠ P2	4,277	42.8	831

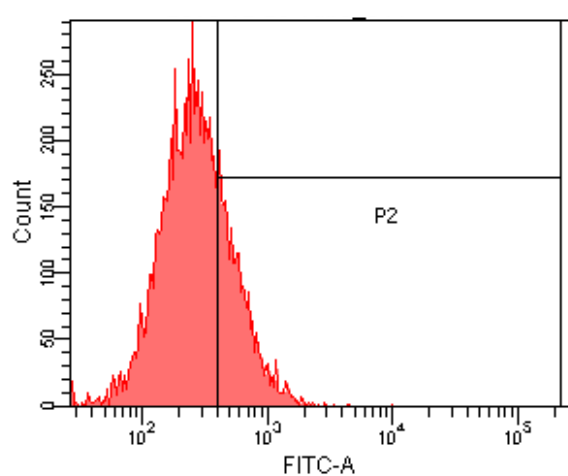
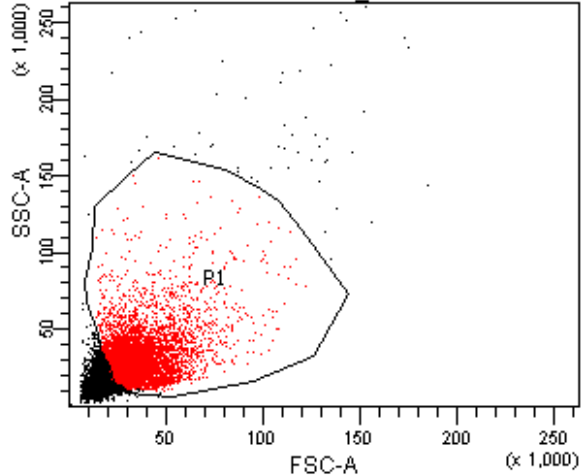


S. aureus HSPs Genistein

Population	#Events	%Parent	%Total
All Events	17,717	####	100.0
P1	10,000	56.4	56.4
P2	694	6.9	3.9

S. aureus HSPs Genistein

Population	#Events	%Parent	FITC-A Mean
All Events	17,717	####	168
P1	10,000	56.4	201
P2	694	6.9	556

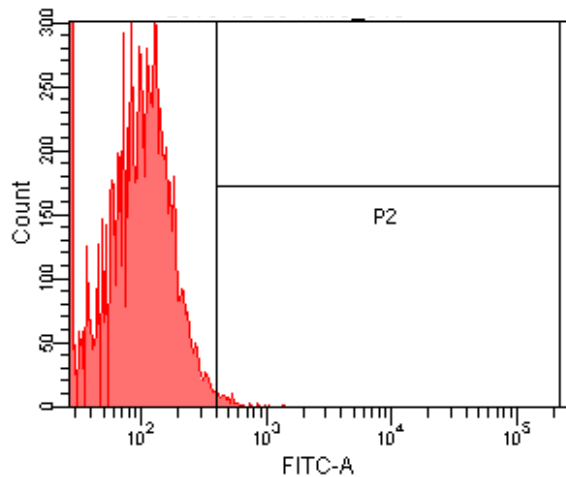
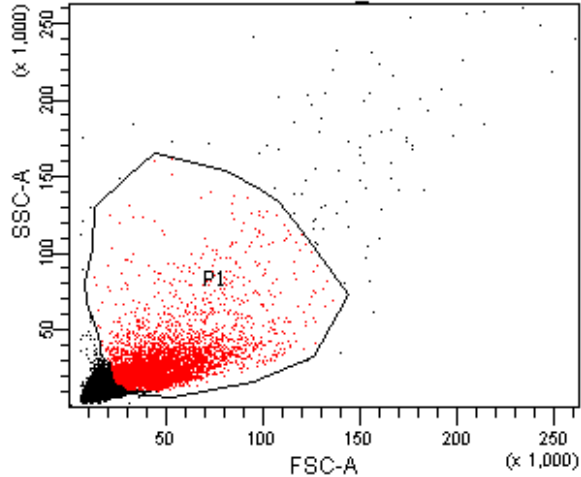


S. aureus HSPs@glucan Genistein

Population	#Events	%Parent	%Total
All Events	18,792	####	100.0
P1	10,000	53.2	53.2
P2	2,657	26.6	14.1

S. aureus HSPs@glucan Genistein

Population	#Events	%Parent	FITC-A Mean
All Events	18,792	####	261
P1	10,000	53.2	333
P2	2,657	26.6	647

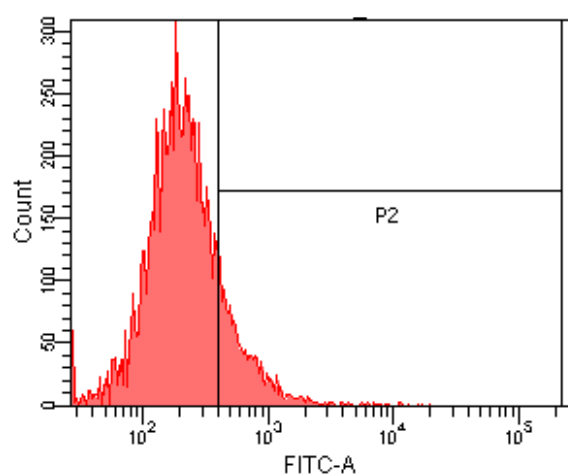
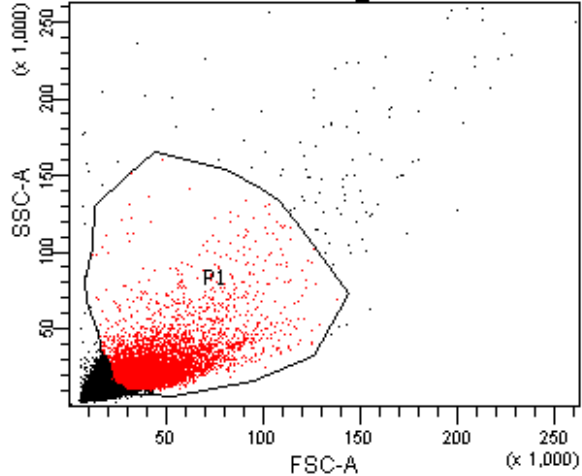


FITC-OVA Chlorpromazine

Population	#Events	%Parent	%Total
All Events	26,551	####	100.0
P1	10,000	37.7	37.7
P2	84	0.8	0.3

FITC-OVA Chlorpromazine

Population	#Events	%Parent	FITC-A Mean
All Events	26,551	####	77
P1	10,000	37.7	110
P2	84	0.8	531

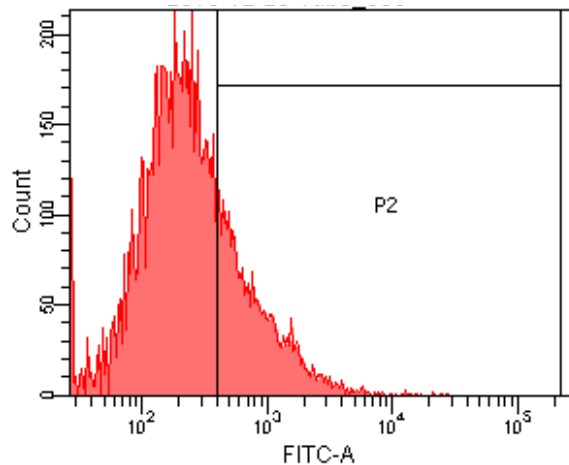
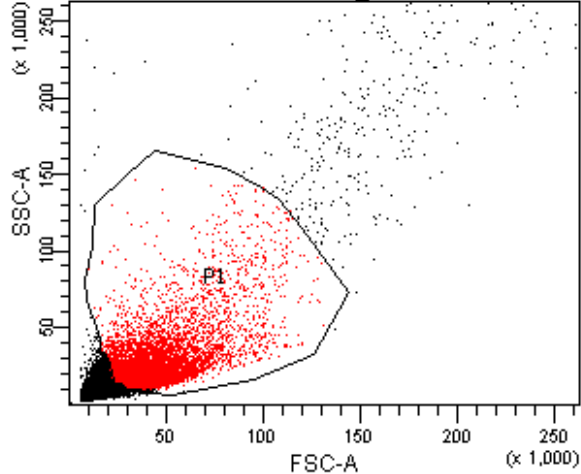


PS HSPs Chlorpromazine

Population	#Events	%Parent	%Total
All Events	28,329	####	100.0
P1	10,000	35.3	35.3
P2	1,664	16.6	5.9

PS HSPs Chlorpromazine

Population	#Events	%Parent	FITC-A Mean
All Events	28,329	####	298
P1	10,000	35.3	304
P2	1,664	16.6	860

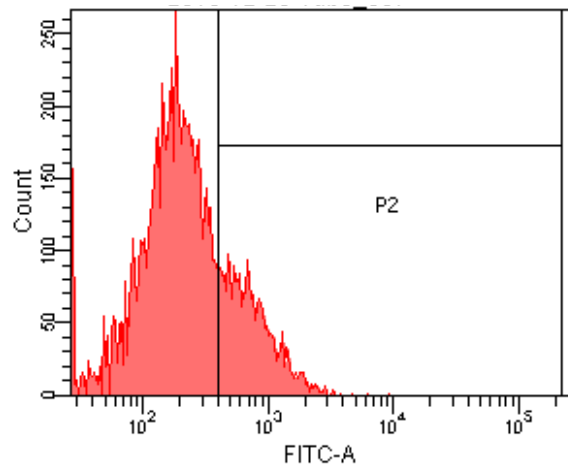
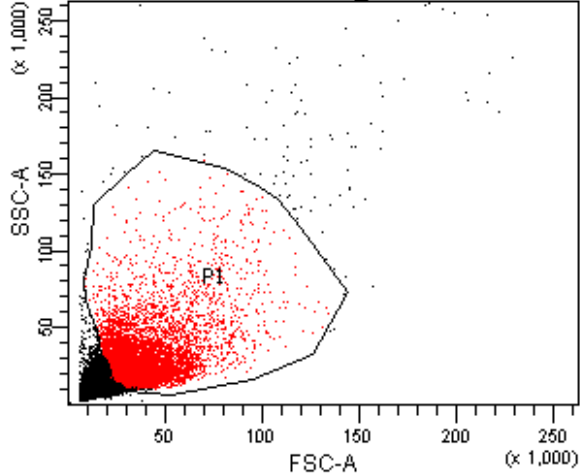


PS HSPs@glucan Chlorpromazine

Population	#Events	%Parent	%Total
All Events	32,013	####	100.0
P1	10,000	31.2	31.2
P2	2,694	26.9	8.4

PS HSPs@glucan Chlorpromazine

Population	#Events	%Parent	FITC-A Mean
All Events	32,013	####	852
P1	10,000	31.2	435
P2	2,694	26.9	1,117

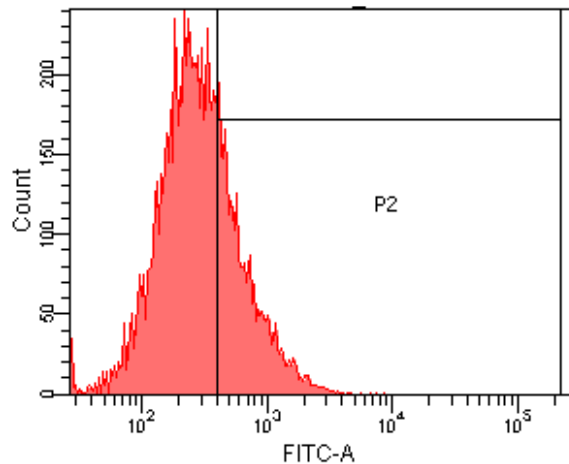
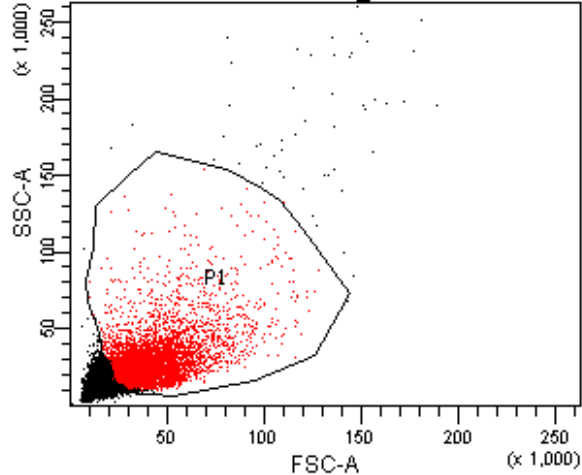


E. coli HSPs Chlorpromazine

Population	#Events	%Parent	%Total
All Events	25,567	####	100.0
P1	10,000	39.1	39.1
P2	2,425	24.2	9.5

E. coli HSPs Chlorpromazine

Population	#Events	%Parent	FITC-A Mean
All Events	25,567	####	230
P1	10,000	39.1	336
P2	2,425	24.2	825

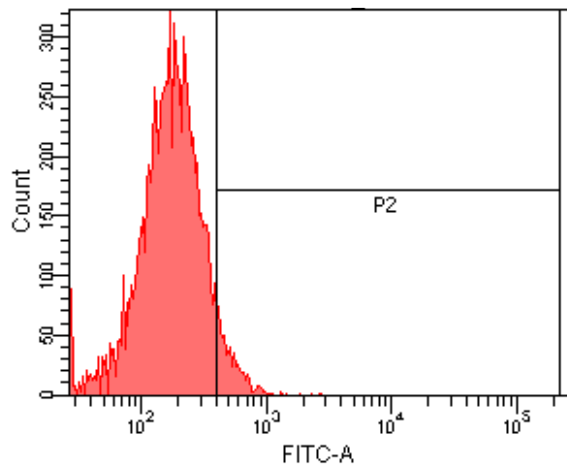
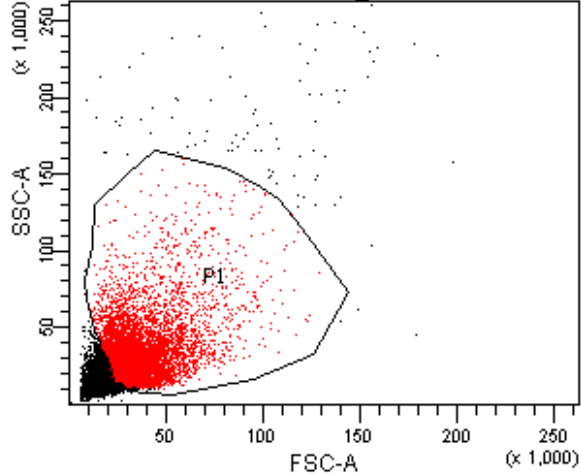


E. coli HSPs@glucan Chlorpromazine

Population	#Events	%Parent	%Total
All Events	25,211	####	100.0
P1	10,000	39.7	39.7
P2	3,049	30.5	12.1

E. coli HSPs@glucan Chlorpromazine

Population	#Events	%Parent	FITC-A Mean
All Events	25,211	####	268
P1	10,000	39.7	384
P2	3,049	30.5	764

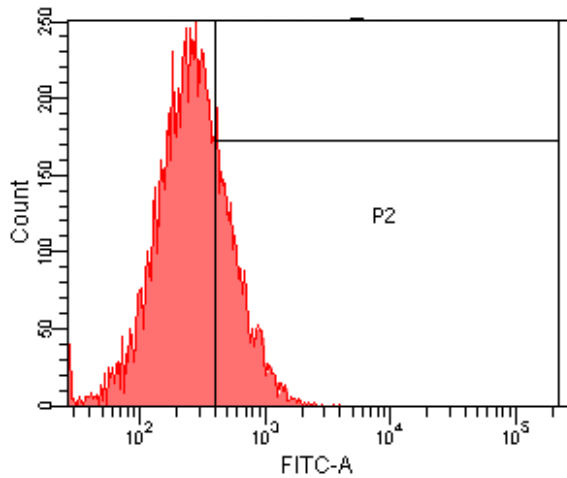
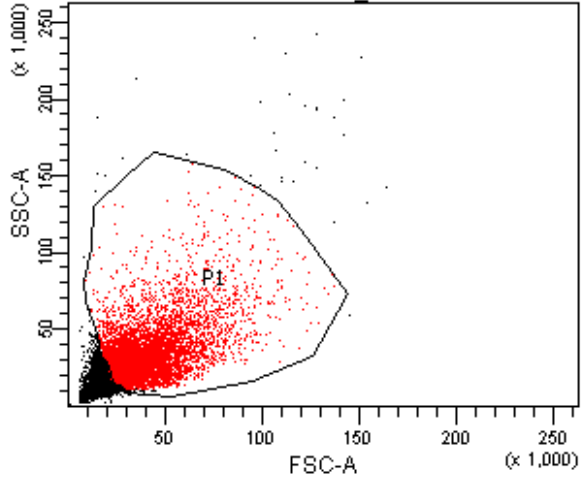


S. aureus HSPs Chlorpromazine

Population	#Events	%Parent	%Total
All Events	23,310	####	100.0
P1	10,014	43.0	43.0
P2	639	6.4	2.7

S. aureus HSPs Chlorpromazine

Population	#Events	%Parent	FITC-A Mean
All Events	23,310	####	151
P1	10,014	43.0	203
P2	639	6.4	544

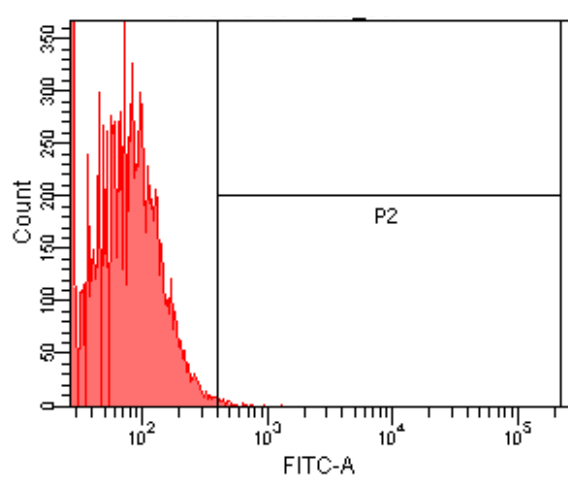
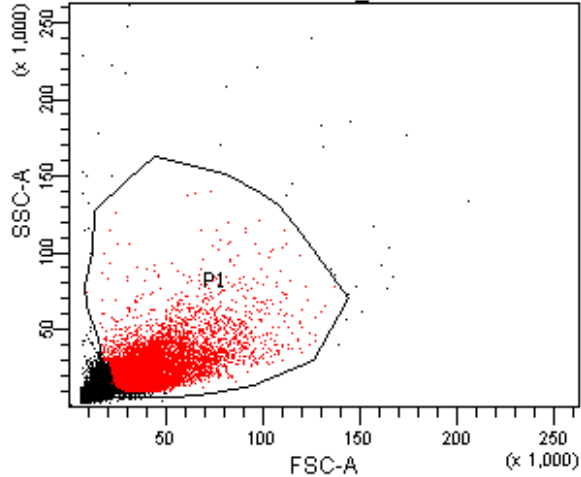


S. aureus HSPs@glucan Chlorpromazine

Population	#Events	%Parent	%Total
All Events	20,425	####	100.0
P1	10,000	49.0	49.0
P2	2,657	26.6	13.0

S. aureus HSPs@glucan Chlorpromazine

Population	#Events	%Parent	FITC-A Mean
All Events	20,425	####	235
P1	10,000	49.0	331
P2	2,657	26.6	643

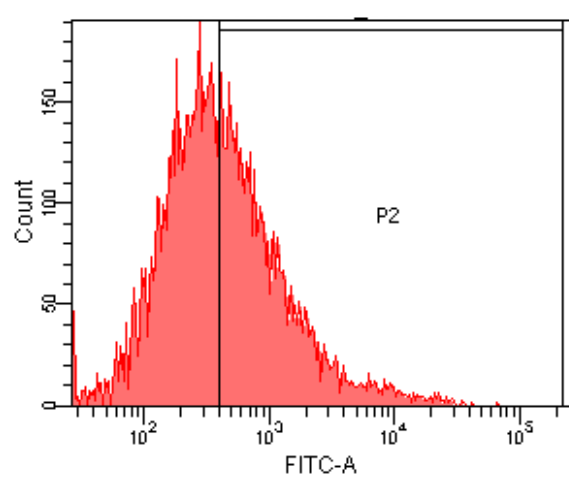
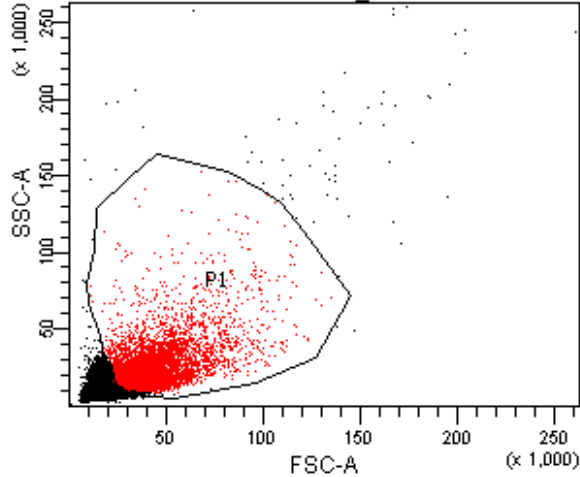


FITC-OVA Amilorid

Population	#Events	%Parent	%Total
All Events	35,846	####	100.0
P1	11,700	32.6	32.6
P2	41	0.4	0.1

FITC-OVA Amilorid

Population	#Events	%Parent	FITC-A Mean
All Events	35,846	####	51
P1	11,700	32.6	79
P2	41	0.4	518

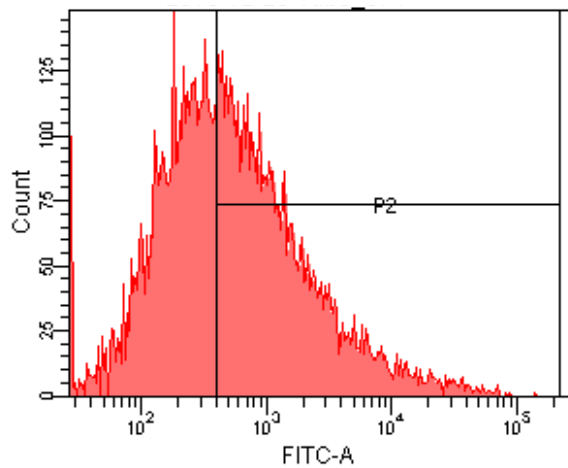
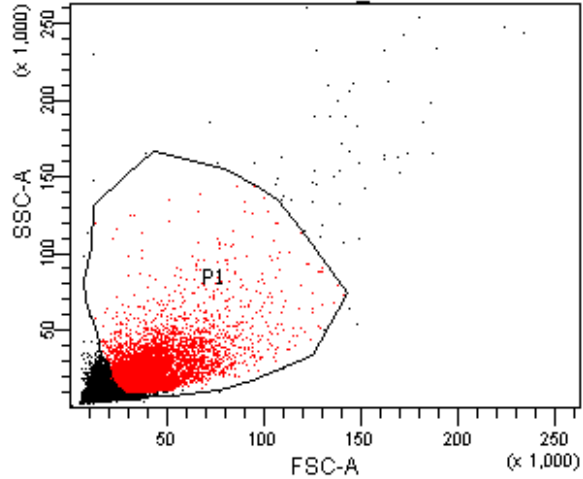


PS HSPs Amilorid

Population	#Events	%Parent	%Total
All Events	37,987	####	100.0
P1	10,274	27.0	27.0
P2	4,907	47.8	12.9

PS HSPs Amilorid

Population	#Events	%Parent	FITC-A Mean
All Events	37,987	####	619
P1	10,274	27.0	927
P2	4,907	47.8	1,708

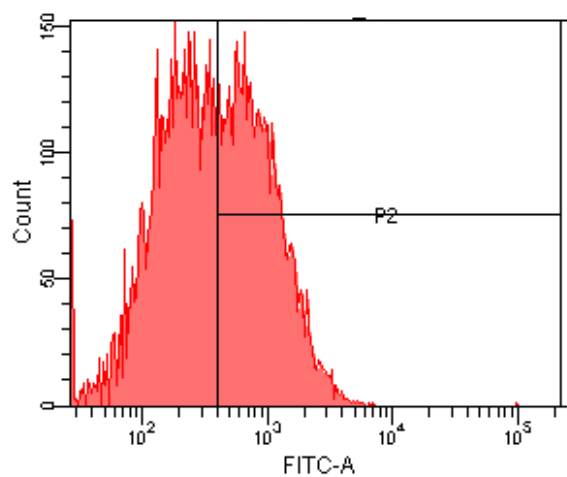
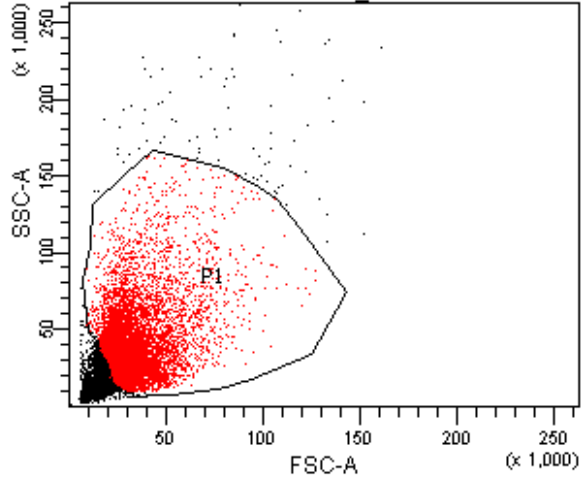


PS HSPs@glucan Amilorid

Population	#Events	%Parent	%Total
All Events	31,984	####	100.0
P1	10,000	31.3	31.3
P2	5,511	55.1	17.2

PS HSPs@glucan Amilorid

Population	#Events	%Parent	FITC-A Mean
All Events	31,984	####	1,519
P1	10,000	31.3	1,694
P2	5,511	55.1	2,910

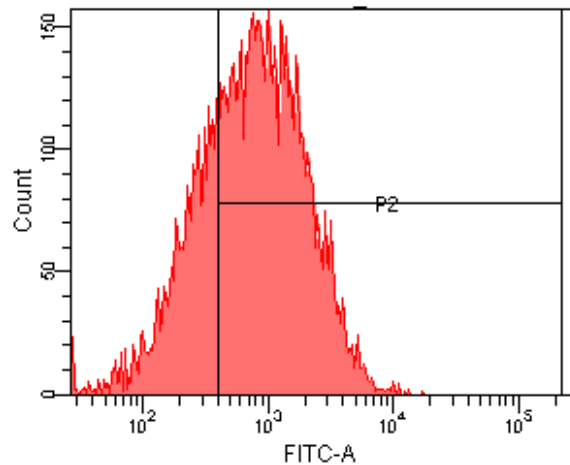
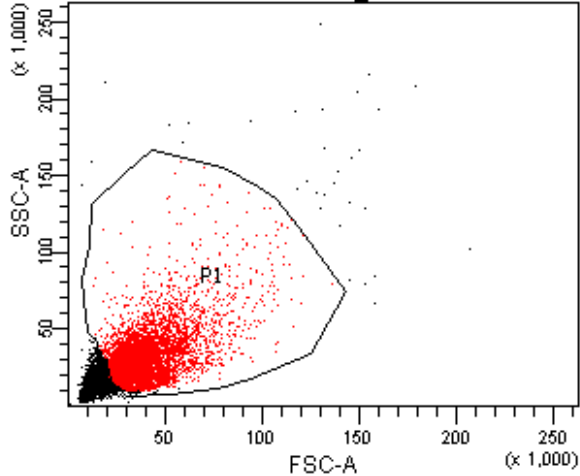


E. coli HSPs Amilorid

Population	#Events	%Parent	%Total
All Events	21,087	####	100.0
P1	10,000	47.4	47.4
P2	4,752	47.5	22.5

E. coli HSPs Amilorid

Population	#Events	%Parent	FITC-A Mean
All Events	21,087	####	385
P1	10,000	47.4	586
P2	4,752	47.5	1,015

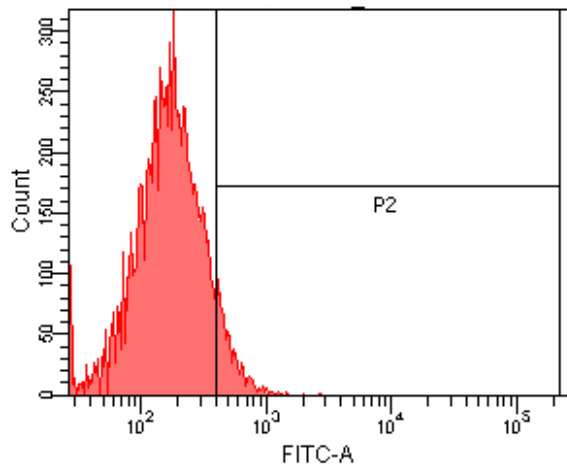
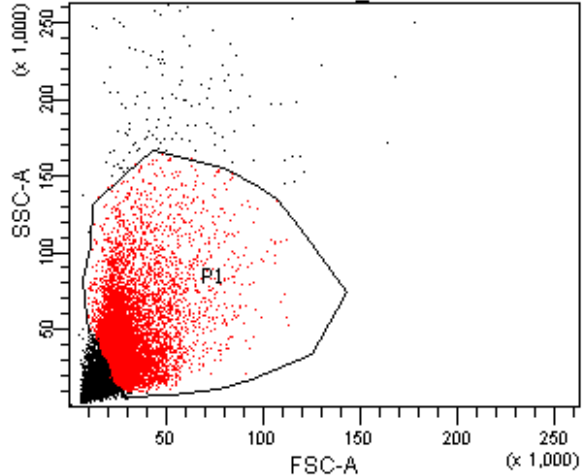


E. coli HSPs@glucan Amilorid

Population	#Events	%Parent	%Total
All Events	23,015	####	100.0
P1	10,000	43.4	43.4
P2	7,309	73.1	31.8

E. coli HSPs@glucan Amilorid

Population	#Events	%Parent	FITC-A Mean
All Events	23,015	####	656
P1	10,000	43.4	1,099
P2	7,309	73.1	1,417

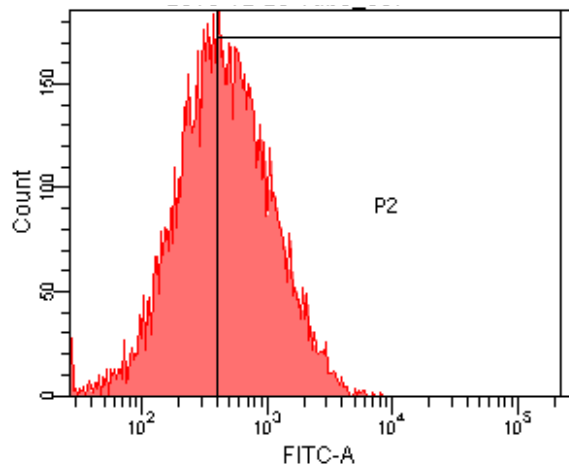
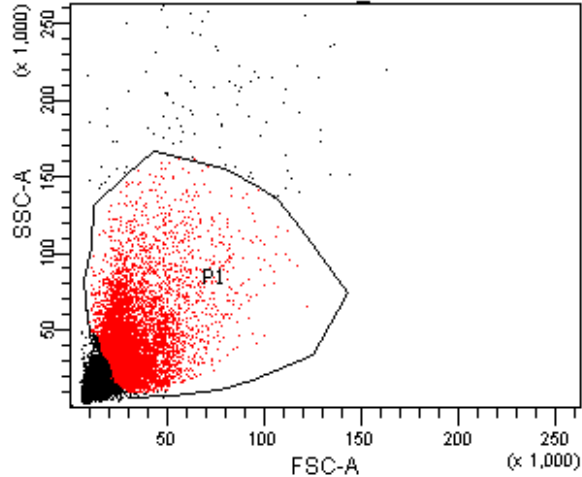


S. aureus HSPs Amilorid

Population	#Events	%Parent	%Total
All Events	19,443	####	100.0
P1	10,000	51.4	51.4
P2	801	8.0	4.1

S. aureus HSPs Amilorid

Population	#Events	%Parent	FITC-A Mean
All Events	19,443	####	152
P1	10,000	51.4	203
P2	801	8.0	544

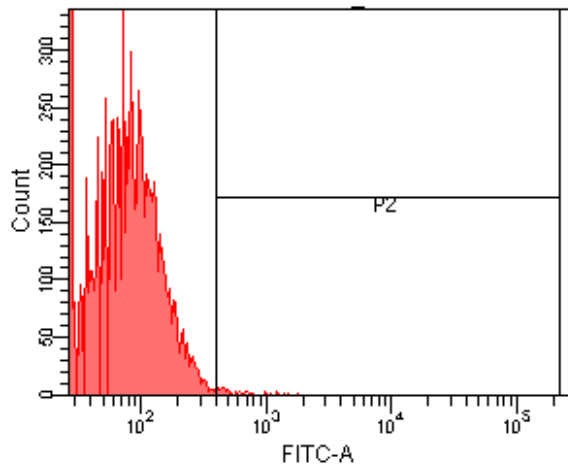
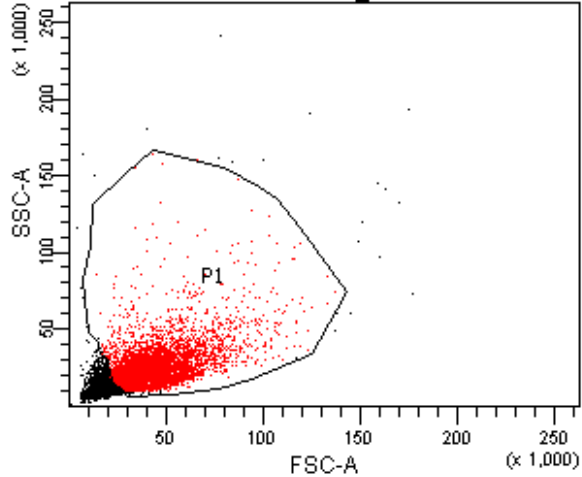


S. aureus HSPs@glucan Amilorid

Population	#Events	%Parent	%Total
All Events	21,736	####	100.0
P1	10,000	46.0	46.0
P2	5,538	55.4	25.5

S. aureus HSPs@glucan Amilorid

Population	#Events	%Parent	FITC-A Mean
All Events	21,736	####	413
P1	10,000	46.0	639
P2	5,538	55.4	966

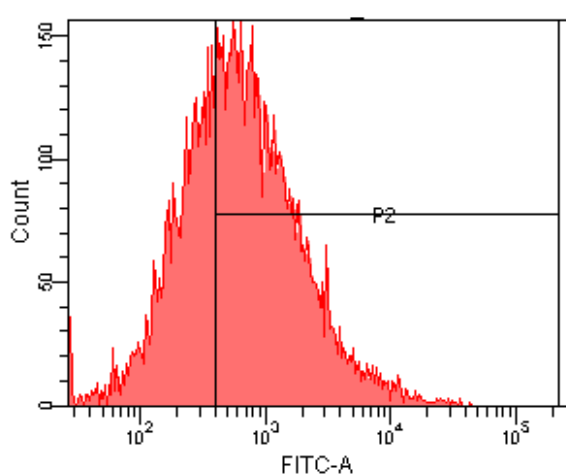
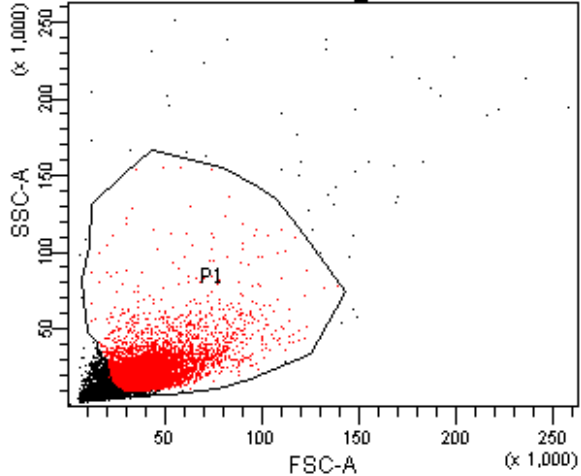


FITC-OVA Glucan

Population	#Events	%Parent	%Total
All Events	22,711	####	100.0
P1	10,000	44.0	44.0
P2	58	0.6	0.3

FITC-OVA Glucan

Population	#Events	%Parent	FITC-A Mean
All Events	22,711	####	58
P1	10,000	44.0	84
P2	58	0.6	621

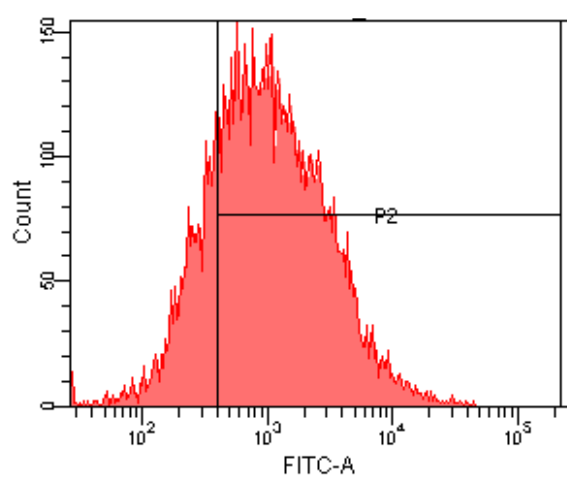
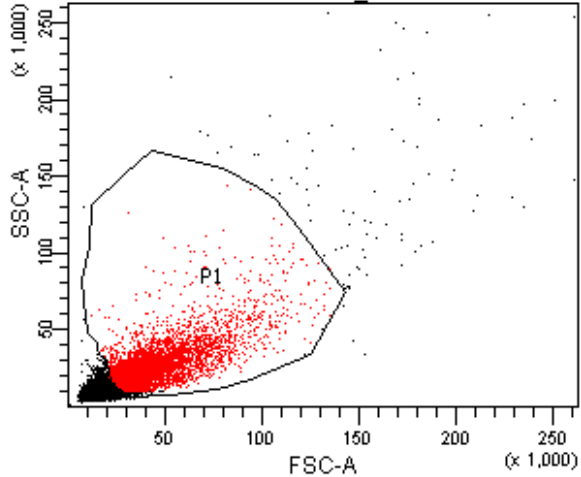


PS HSPs Glucan

Population	#Events	%Parent	%Total
All Events	25,079	####	100.0
P1	10,000	39.9	39.9
P2	6,562	65.6	26.2

PS HSPs Glucan

Population	#Events	%Parent	FITC-A Mean
All Events	25,079	####	953
P1	10,000	39.9	1,201
P2	6,562	65.6	1,710

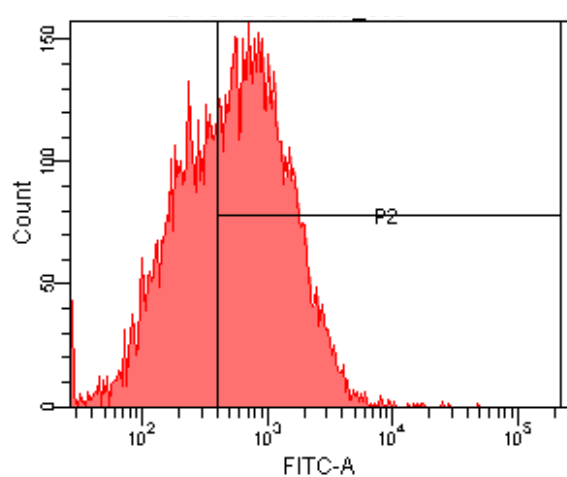
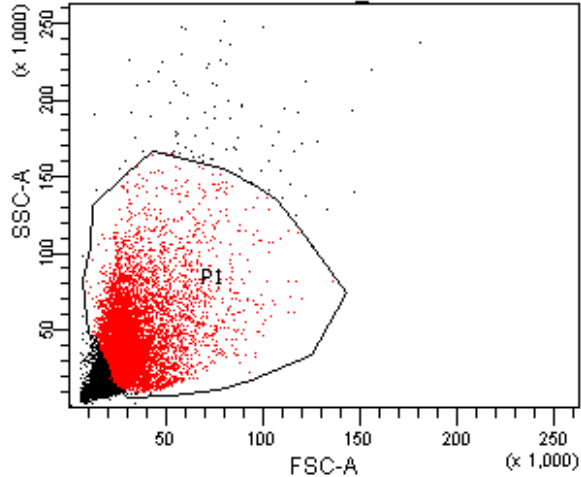


PS HSPs@glucan Glucan

Population	#Events	%Parent	%Total
All Events	27,152	####	100.0
P1	10,000	36.8	36.8
P2	7,991	79.9	29.4

PS HSPs@glucan Glucan

Population	#Events	%Parent	FITC-A Mean
All Events	27,152	####	1,210
P1	10,000	36.8	1,780
P2	7,991	79.9	2,163

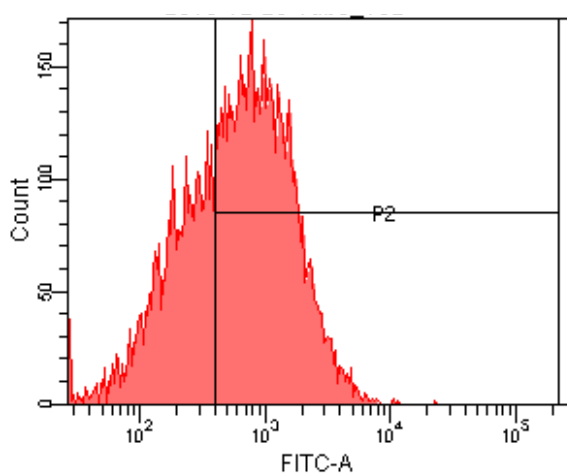
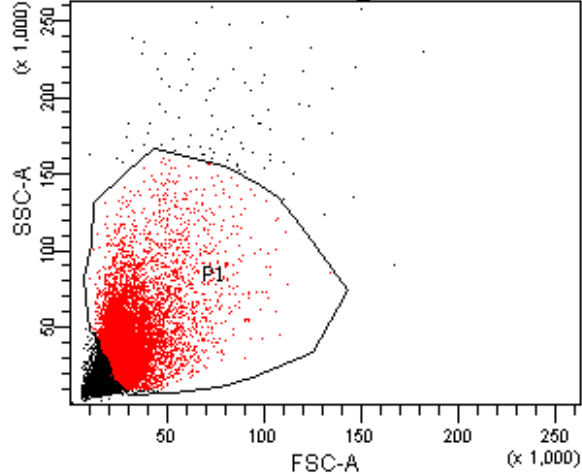


E. coli HSPs Glucan

Population	#Events	%Parent	%Total
All Events	15,414	####	100.0
P1	10,000	64.9	64.9
P2	6,153	61.5	39.9

E. coli HSPs Glucan

Population	#Events	%Parent	FITC-A Mean
All Events	15,414	####	672
P1	10,000	64.9	827
P2	6,153	61.5	1,211

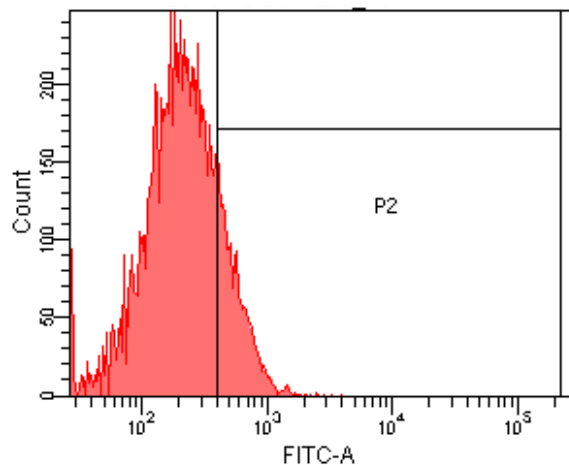
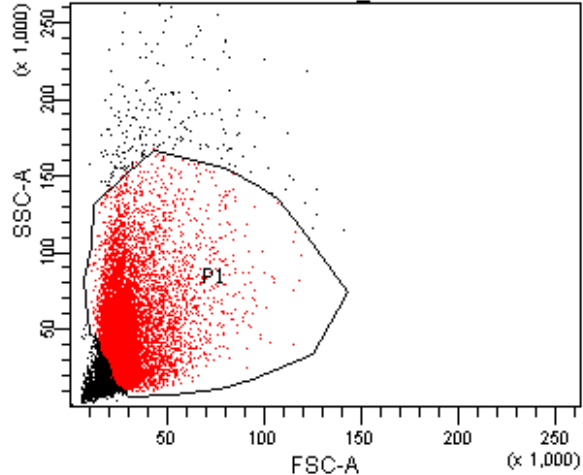


E. coli HSPs@glucan Glucan

Population	#Events	%Parent	%Total
All Events	18,403	####	100.0
P1	10,000	54.3	54.3
P2	6,642	66.4	36.1

E. coli HSPs@glucan Glucan

Population	#Events	%Parent	FITC-A Mean
All Events	18,403	####	628
P1	10,000	54.3	888
P2	6,642	66.4	1,230

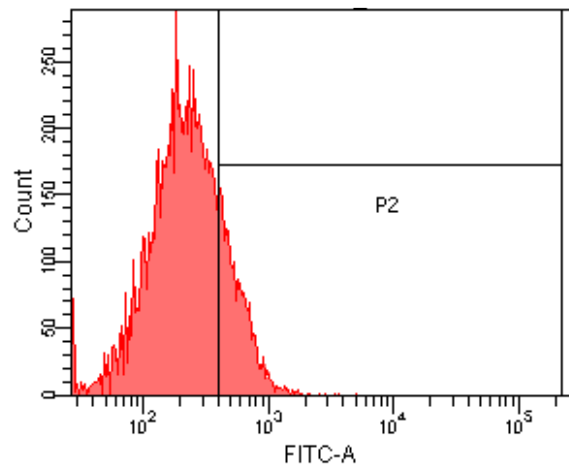
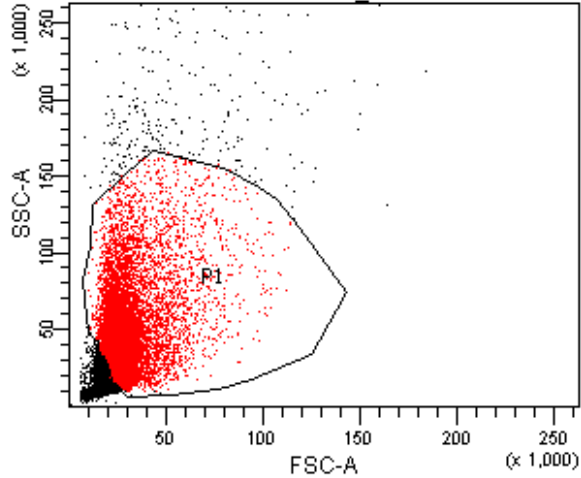


S. aureus HSPs Glucan

Population	#Events	%Parent	%Total
All Events	14,684	####	100.0
P1	10,000	68.1	68.1
P2	1,842	18.4	12.5

S. aureus HSPs Glucan

Population	#Events	%Parent	FITC-A Mean
All Events	14,684	####	231
P1	10,000	68.1	267
P2	1,842	18.4	596



S. aureus HSPs@glucan Glucan

Population	#Events	%Parent	%Total
All Events	14,169	####	100.0
P1	10,000	70.6	70.6
P2	2,025	20.2	14.3

S. aureus HSPs@glucan Glucan

Population	#Events	%Parent	FITC-A Mean
All Events	14,169	####	247
P1	10,000	70.6	279
P2	2,025	20.2	597