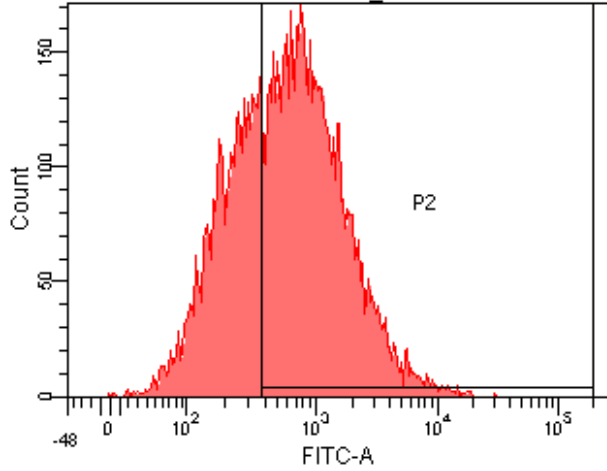
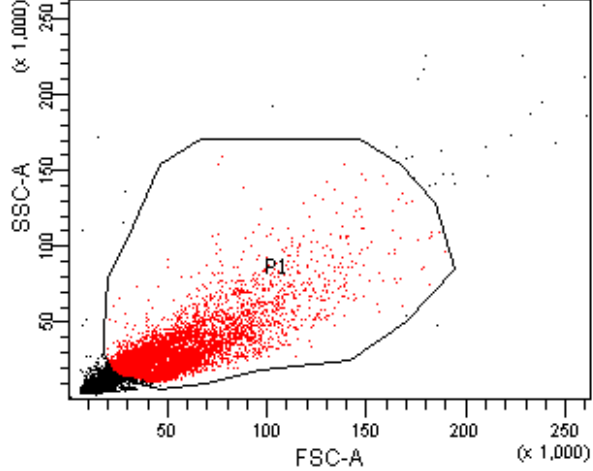


Blank			
Population	#Events	%Parent	%Total
■ All Events	11,924	####	100.0
■ P1	10,000	83.9	83.9
☒ P2	0	0.0	0.0

Blank				FITC-A
Population	#Events	%Parent		Mean
■ All Events	11,924	####		57
■ P1	10,000	83.9		61
☒ P2	0	0.0		####

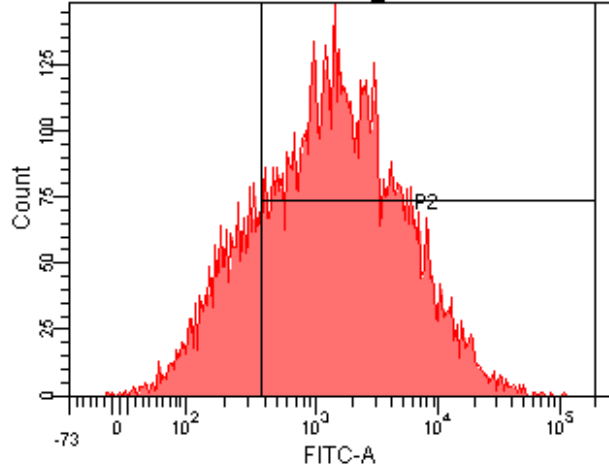
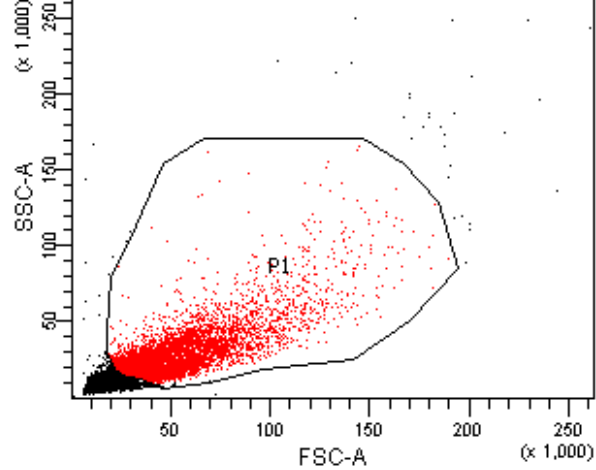


PS HSPs Isotype

Population	#Events	%Parent	%Total
All Events	15,098	####	100.0
P1	10,000	66.2	66.2
P2	6,406	64.1	42.4

PS HSPs Isotype

Population	#Events	%Parent	FITC-A Mean
All Events	15,098	####	792
P1	10,000	66.2	968
P2	6,406	64.1	1,386

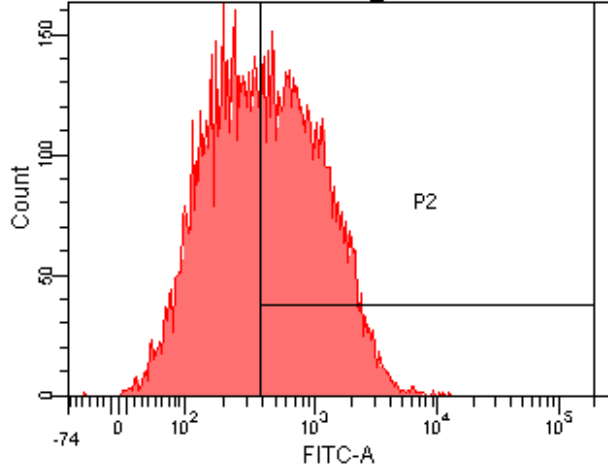
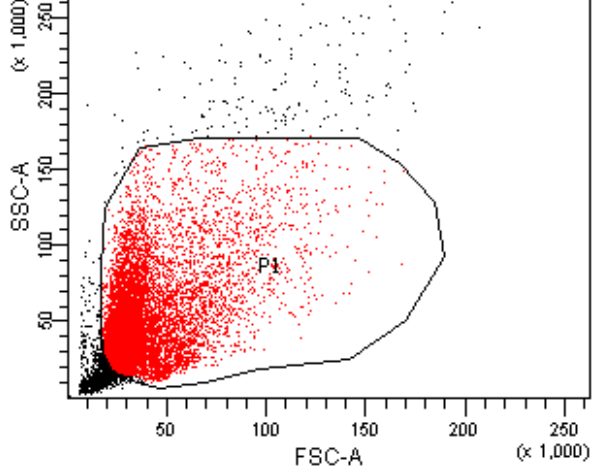


PS HSPs@glucan Isotype

Population	#Events	%Parent	%Total
All Events	19,495	####	100.0
P1	10,000	51.3	51.3
P2	7,989	79.9	41.0

PS HSPs@glucan Isotype

Population	#Events	%Parent	FITC-A Mean
All Events	19,495	####	2,504
P1	10,000	51.3	2,840
P2	7,989	79.9	3,500

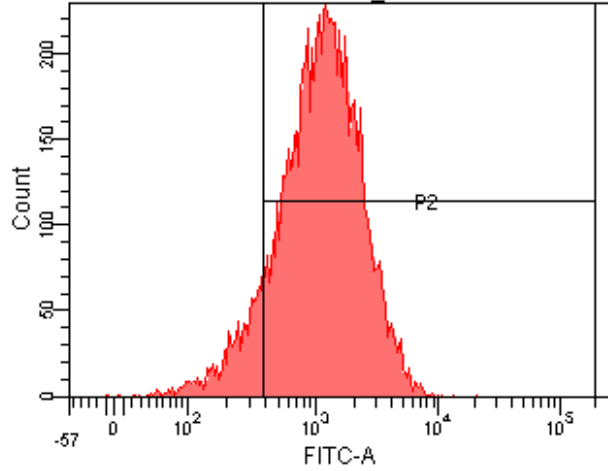
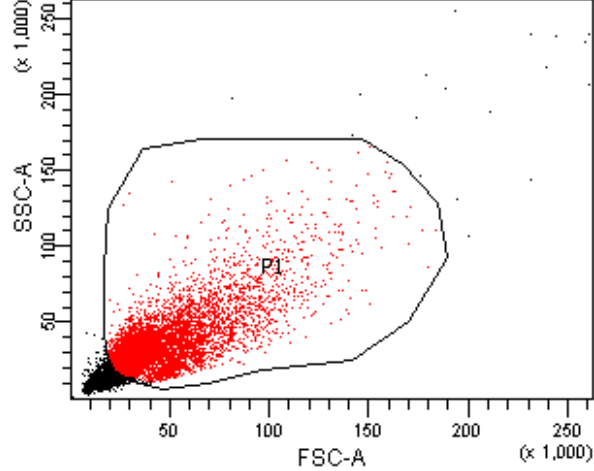


E. coli HSPs Isotype

Population	#Events	%Parent	%Total
All Events	12,645	####	100.0
P1	10,000	79.1	79.1
P2	5,103	51.0	40.4

E. coli HSPs Isotype

Population	#Events	%Parent	FITC-A Mean
All Events	12,645	####	586
P1	10,000	79.1	640
P2	5,103	51.0	1,062

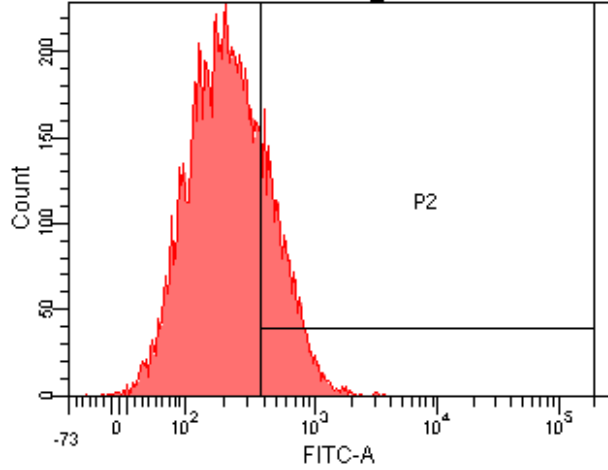
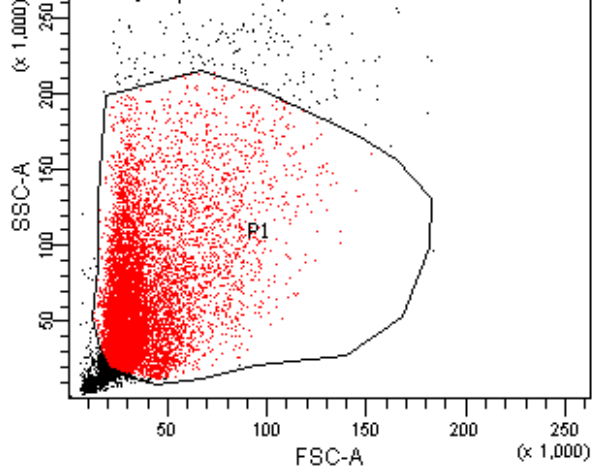


E. coli HSPs@glucan Isotype

Population	#Events	%Parent	%Total
■ All Events	15,471	####	100.0
■ P1	10,000	64.6	64.6
⊠ P2	8,913	89.1	57.6

E. coli HSPs@glucan Isotype

Population	#Events	%Parent	FITC-A Mean
■ All Events	15,471	####	1,015
■ P1	10,000	64.6	1,328
⊠ P2	8,913	89.1	1,459

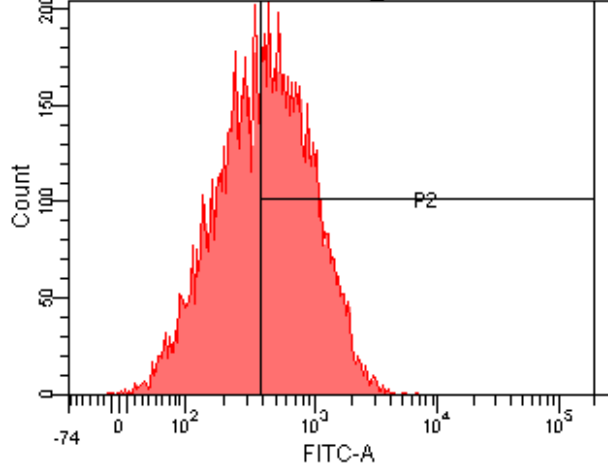
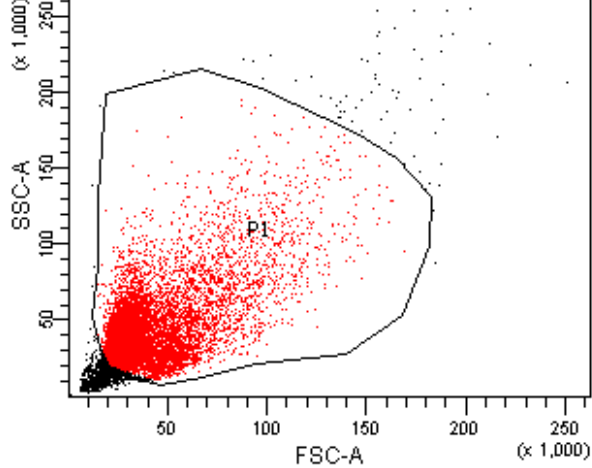


S. aureus HSPs Isotype

Population	#Events	%Parent	%Total
■ All Events	12,053	####	100.0
■ P1	10,000	83.0	83.0
⊠ P2	2,097	21.0	17.4

S. aureus HSPs Isotype

Population	#Events	%Parent	FITC-A Mean
■ All Events	12,053	####	272
■ P1	10,000	83.0	274
⊠ P2	2,097	21.0	602

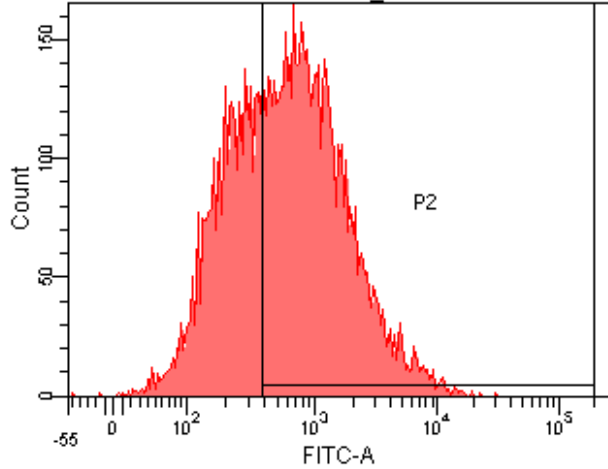
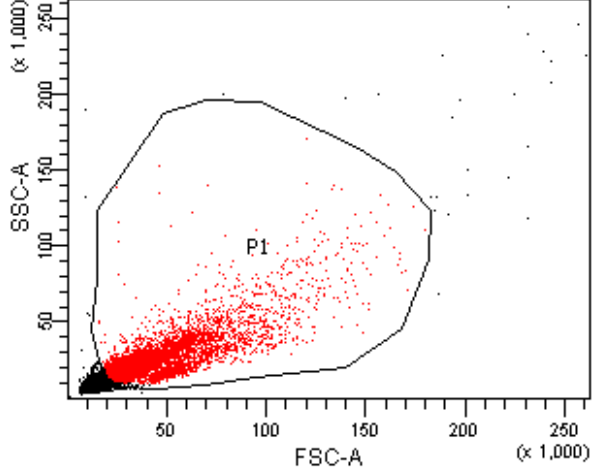


S. aureus HSPs@glucan Isotype

Population	#Events	%Parent	%Total
All Events	12,816	###	100.0
P1	10,000	78.0	78.0
P2	5,283	52.8	41.2

S. aureus HSPs@glucan Isotype

Population	#Events	%Parent	FITC-A Mean
All Events	12,816	###	481
P1	10,000	78.0	549
P2	5,283	52.8	843

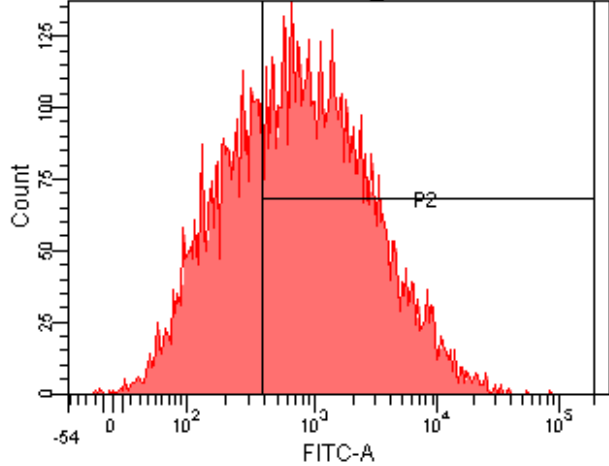
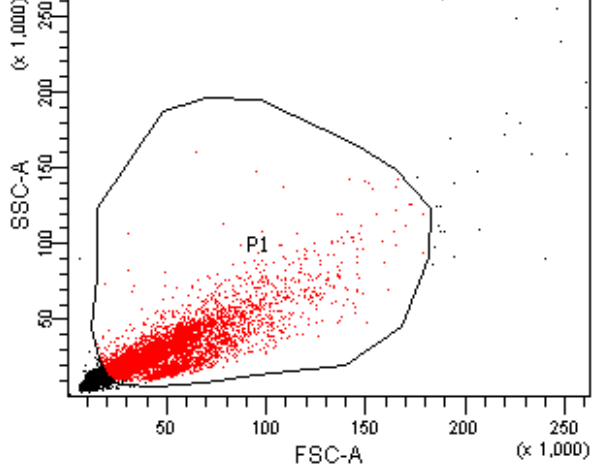


PS HSPs anti-TLR2 mAb

Population	#Events	%Parent	%Total
All Events	14,386	####	100.0
P1	10,000	69.5	69.5
P2	6,338	63.4	44.1

PS HSPs anti-TLR2 mAb

Population	#Events	%Parent	FITC-A Mean
All Events	14,386	####	834
P1	10,000	69.5	1,006
P2	6,338	63.4	1,459

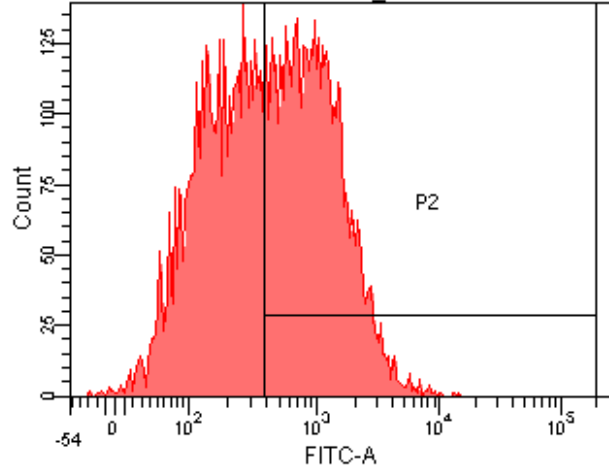
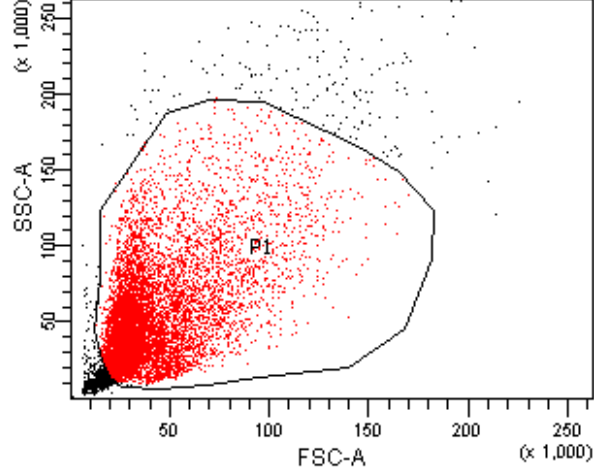


PS HSPs@glucan anti-TLR2 mAb

Population	#Events	%Parent	%Total
■ All Events	12,922	####	100.0
■ P1	10,000	77.4	77.4
⊠ P2	6,653	66.5	51.5

PS HSPs@glucan anti-TLR2 mAb

Population	#Events	%Parent	FITC-A Mean
■ All Events	12,922	####	1,461
■ P1	10,000	77.4	1,634
⊠ P2	6,653	66.5	2,354

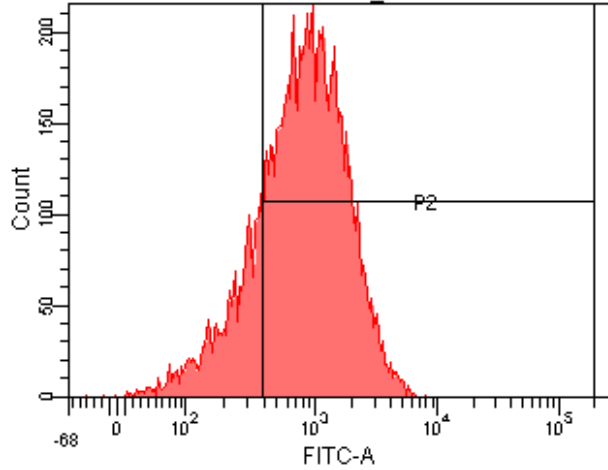
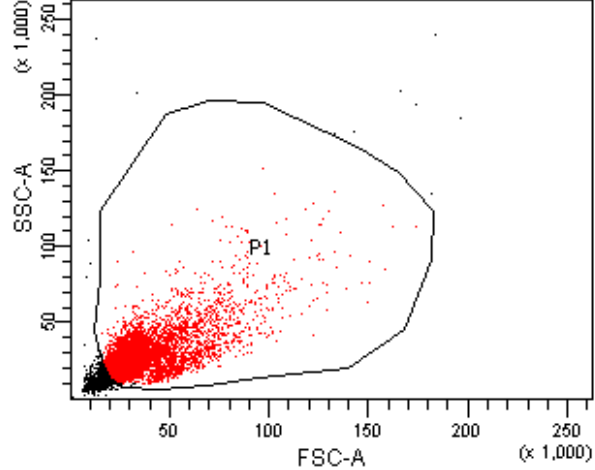


E. coli HSPs anti-TLR2 mAb

Population	#Events	%Parent	%Total
■ All Events	11,477	####	100.0
■ P1	10,000	87.1	87.1
⊠ P2	5,204	52.0	45.3

E. coli HSPs anti-TLR2 mAb

Population	#Events	%Parent	FITC-A Mean
■ All Events	11,477	####	694
■ P1	10,000	87.1	690
⊠ P2	5,204	52.0	1,155

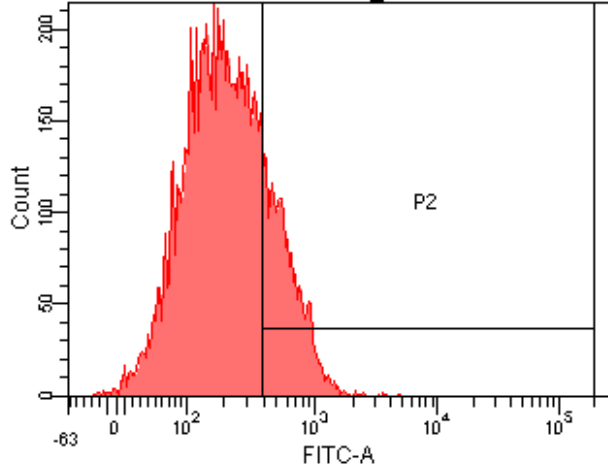
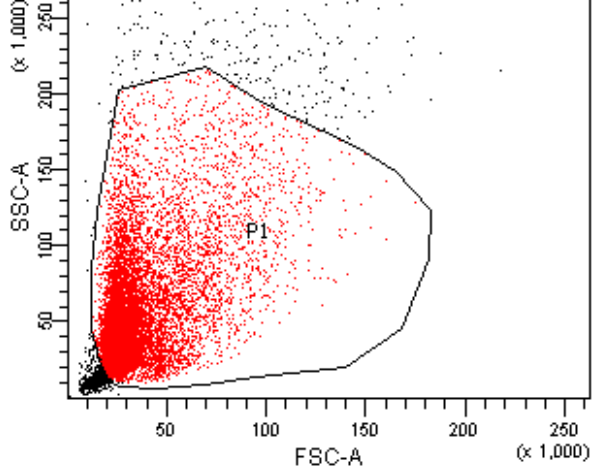


E. coli HSPs@glucan anti-TLR2 mAb

Population	#Events	%Parent	%Total
All Events	13,282	####	100.0
P1	10,000	75.3	75.3
P2	8,023	80.2	60.4

E. coli HSPs@glucan anti-TLR2 mAb

Population	#Events	%Parent	FITC-A Mean
All Events	13,282	####	828
P1	10,000	75.3	995
P2	8,023	80.2	1,182

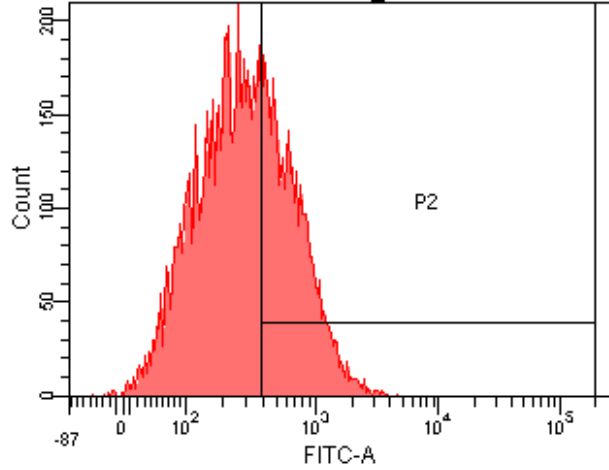
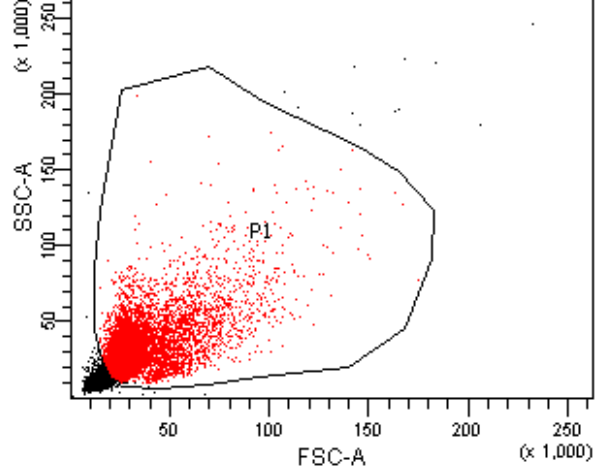


S. aureus HSPs anti-TLR2 mAb

Population	#Events	%Parent	%Total
■ All Events	11,333	####	100.0
■ P1	10,000	88.2	88.2
☒ P2	2,101	21.0	18.5

S. aureus HSPs anti-TLR2 mAb

Population	#Events	%Parent	FITC-A Mean
■ All Events	11,333	####	293
■ P1	10,000	88.2	273
☒ P2	2,101	21.0	626

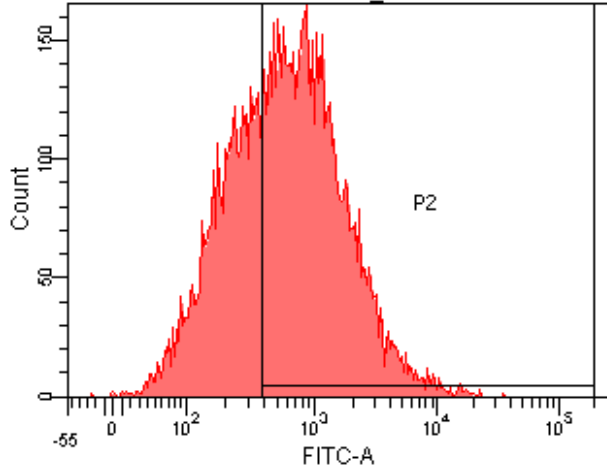
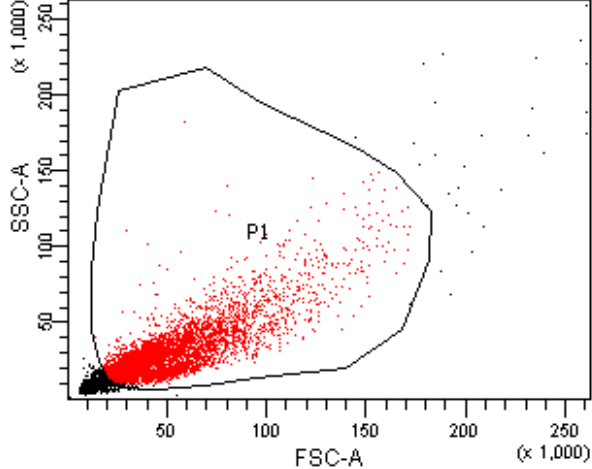


S. aureus HSPs@glucan anti-TLR2 mAb

Population	#Events	%Parent	%Total
All Events	12,216	####	100.0
P1	10,000	81.9	81.9
P2	3,657	36.6	29.9

S. aureus HSPs@glucan anti-TLR2 mAb

Population	#Events	%Parent	FITC-A Mean
All Events	12,216	####	348
P1	10,000	81.9	390
P2	3,657	36.6	725

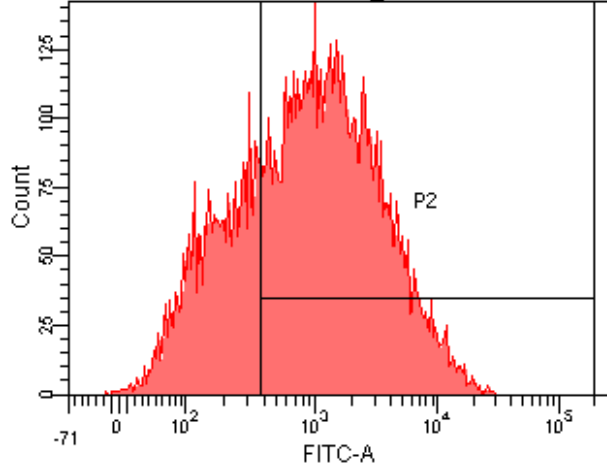
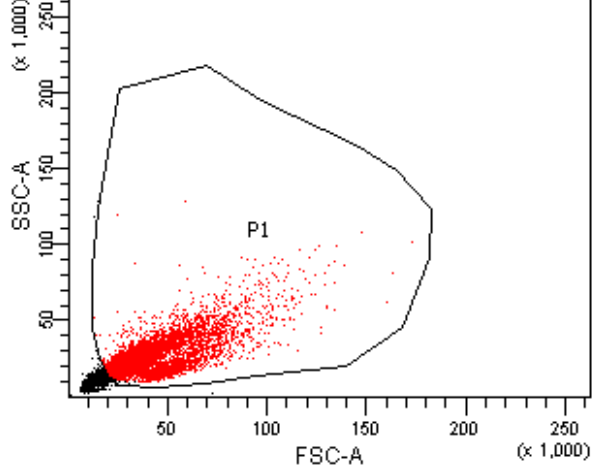


PS HSPs Isotype

Population	#Events	%Parent	%Total
All Events	12,527	####	100.0
P1	10,000	79.8	79.8
P2	6,419	64.2	51.2

PS HSPs Isotype

Population	#Events	%Parent	FITC-A Mean
All Events	12,527	####	878
P1	10,000	79.8	976
P2	6,419	64.2	1,400

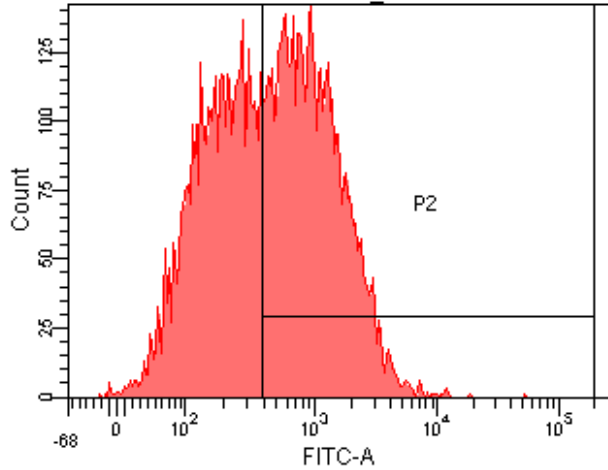
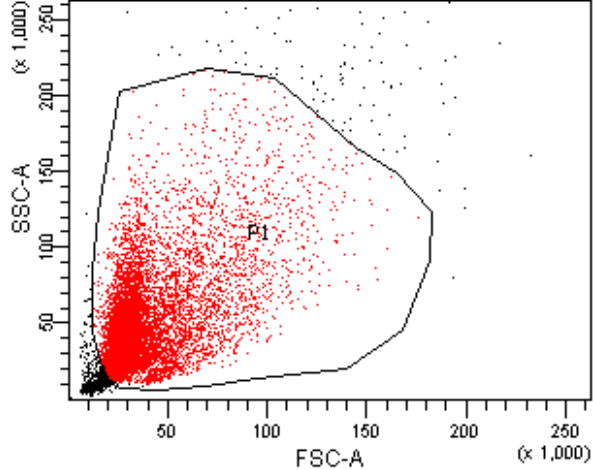


PS HSPs@glucan Isotype

Population	#Events	%Parent	%Total
All Events	12,311	####	100.0
P1	10,000	81.2	81.2
P2	7,132	71.3	57.9

PS HSPs@glucan Isotype

Population	#Events	%Parent	FITC-A Mean
All Events	12,311	####	1,588
P1	10,000	81.2	1,753
P2	7,132	71.3	2,378

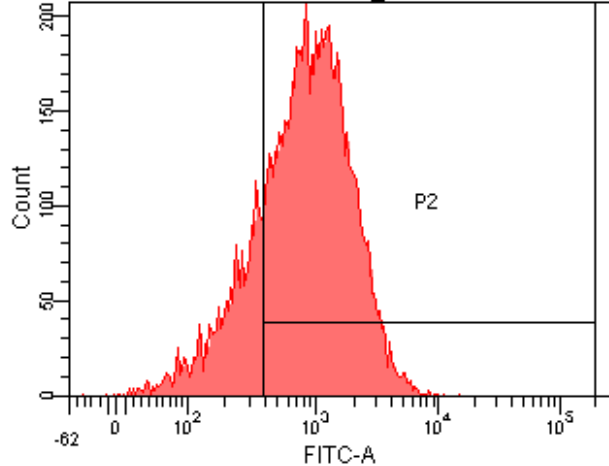
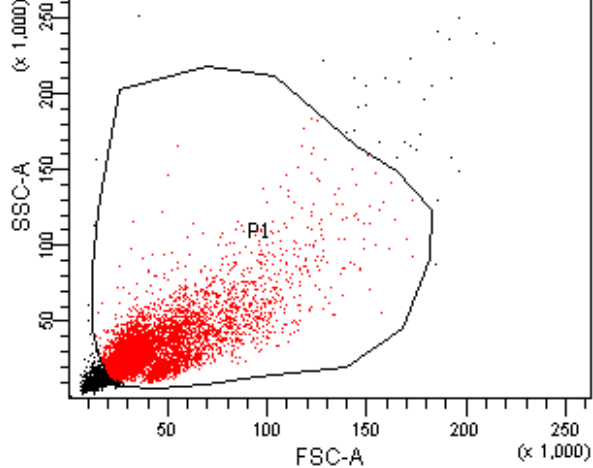


E. coli HSPs Isotype

Population	#Events	%Parent	%Total
■ All Events	11,437	####	100.0
■ P1	10,000	87.4	87.4
⊠ P2	5,453	54.5	47.7

E. coli HSPs Isotype

Population	#Events	%Parent	FITC-A Mean
■ All Events	11,437	####	707
■ P1	10,000	87.4	739
⊠ P2	5,453	54.5	1,196

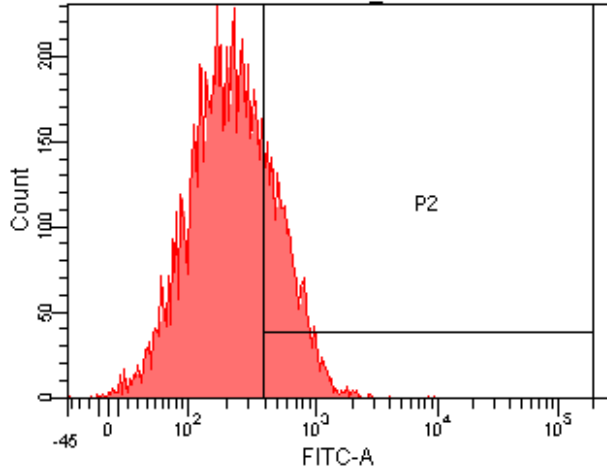
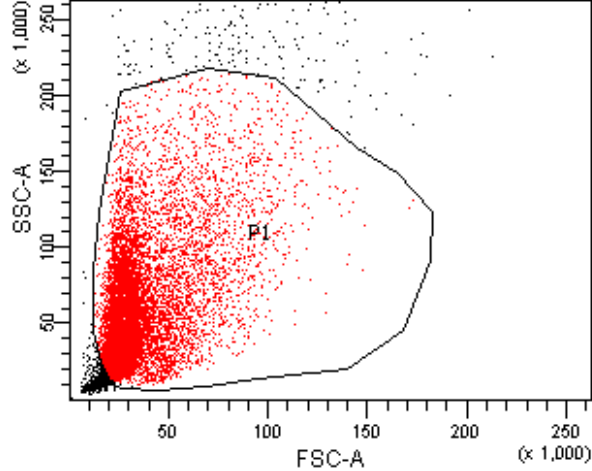


E. coli HSPs@glucan Isotype

Population	#Events	%Parent	%Total
■ All Events	12,132	####	100.0
■ P1	10,000	82.4	82.4
☒ P2	7,951	79.5	65.5

E. coli HSPs@glucan Isotype

Population	#Events	%Parent	FITC-A Mean
■ All Events	12,132	####	942
■ P1	10,000	82.4	1,056
☒ P2	7,951	79.5	1,269

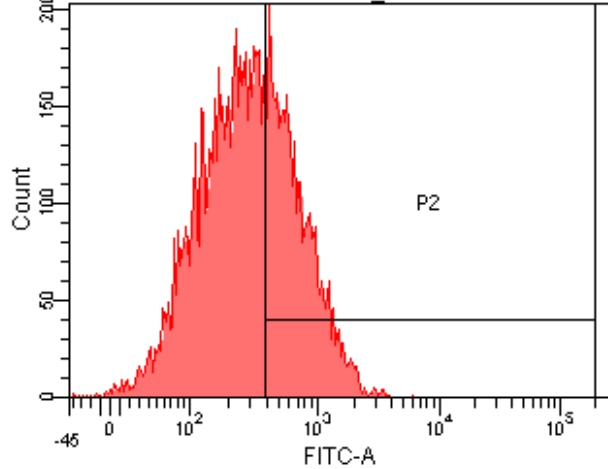
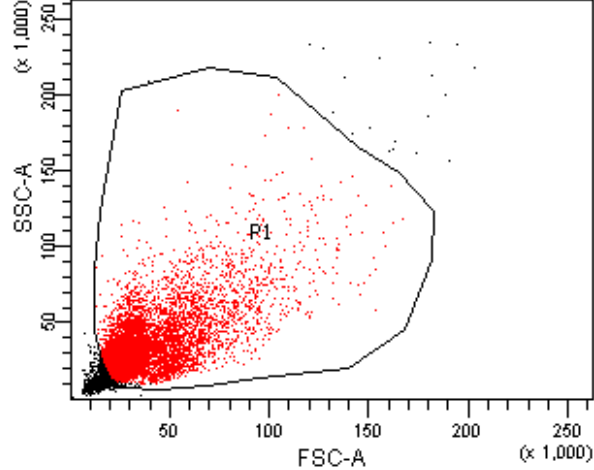


S. aureus HSPs Isotype

Population	#Events	%Parent	%Total
All Events	11,212	####	100.0
P1	10,000	89.2	89.2
P2	2,390	23.9	21.3

S. aureus HSPs Isotype

Population	#Events	%Parent	FITC-A Mean
All Events	11,212	####	312
P1	10,000	89.2	293
P2	2,390	23.9	636

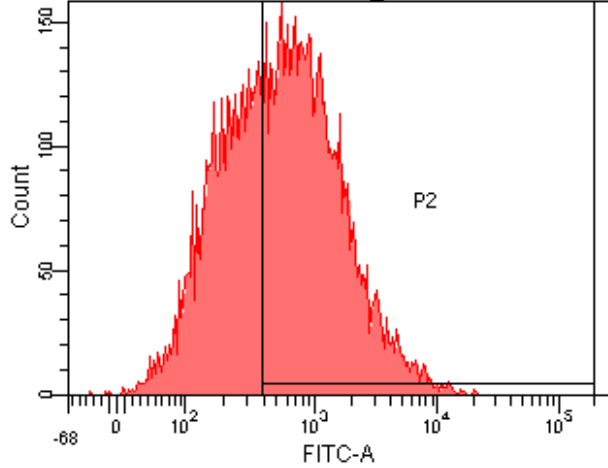
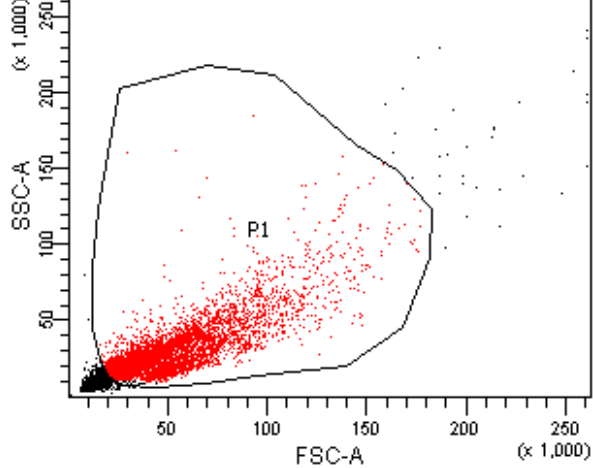


S. aureus HSPs@glucan Isotype

Population	#Events	%Parent	%Total
■ All Events	12,129	####	100.0
■ P1	10,000	82.4	82.4
⊠ P2	3,758	37.6	31.0

S. aureus HSPs@glucan Isotype

Population	#Events	%Parent	FITC-A Mean
■ All Events	12,129	####	360
■ P1	10,000	82.4	403
⊠ P2	3,758	37.6	749

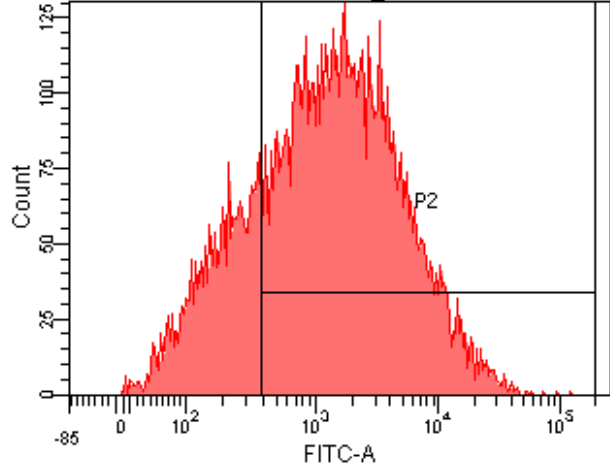
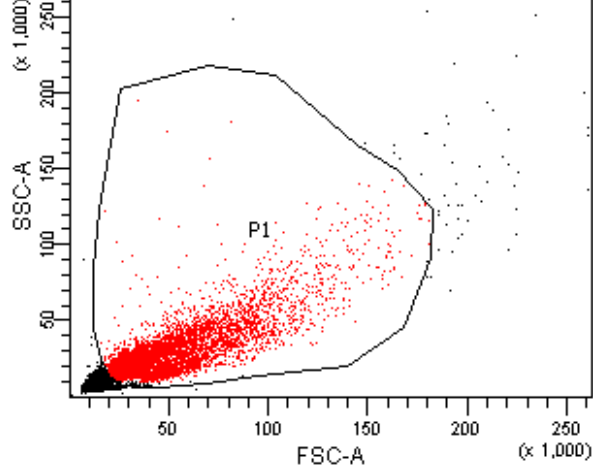


PS HSPs anti-dectin-1 mAb

Population	#Events	%Parent	%Total
■ All Events	12,678	####	100.0
■ P1	10,000	78.9	78.9
⊠ P2	6,073	60.7	47.9

PS HSPs anti-dectin-1 mAb

Population	#Events	%Parent	FITC-A Mean
■ All Events	12,678	####	817
■ P1	10,000	78.9	912
⊠ P2	6,073	60.7	1,364

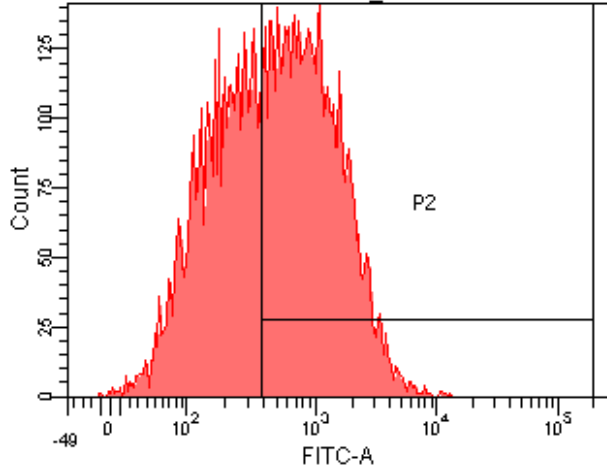
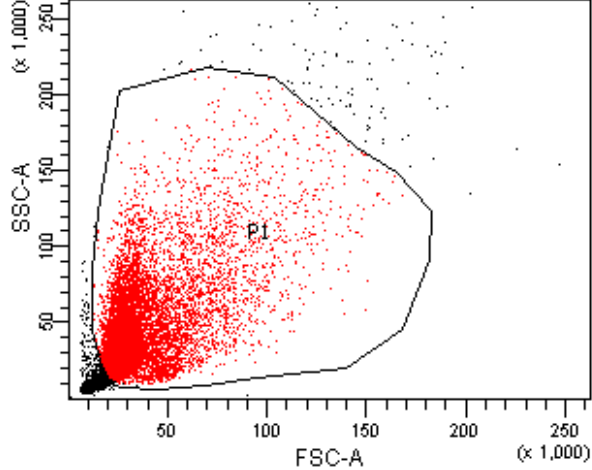


PS HSPs@glucan anti-dectin-1 mAb

Population	#Events	%Parent	%Total
All Events	12,632	####	100.0
P1	10,000	79.2	79.2
P2	7,752	77.5	61.4

PS HSPs@glucan anti-dectin-1 mAb

Population	#Events	%Parent	FITC-A Mean
All Events	12,632	####	2,584
P1	10,000	79.2	2,647
P2	7,752	77.5	3,356

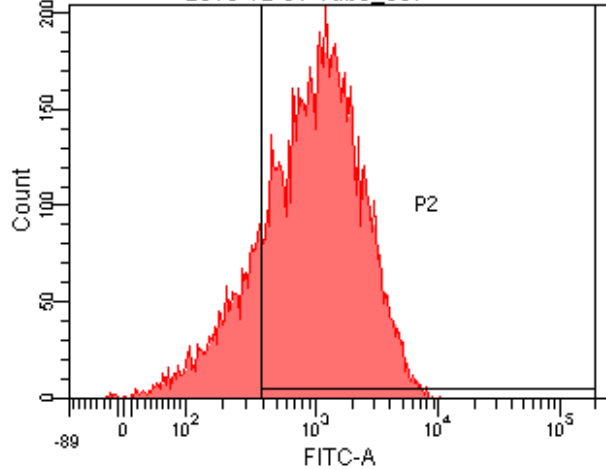
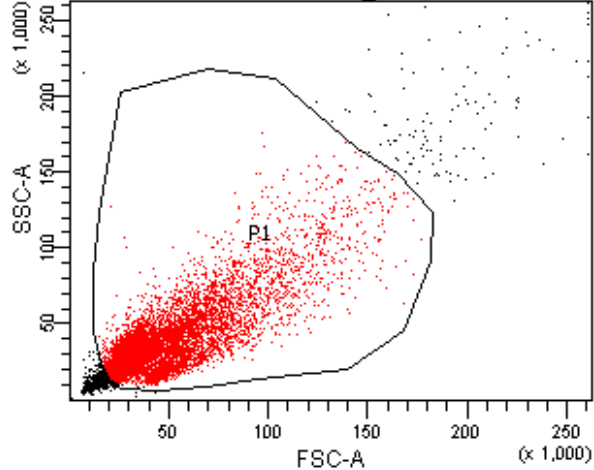


E. coli HSPs anti-dectin-1 mAb

Population	#Events	%Parent	%Total
■ All Events	11,556	####	100.0
■ P1	10,000	86.5	86.5
⊠ P2	5,660	56.6	49.0

E. coli HSPs anti-dectin-1 mAb

Population	#Events	%Parent	FITC-A Mean
■ All Events	11,556	####	728
■ P1	10,000	86.5	759
⊠ P2	5,660	56.6	1,191

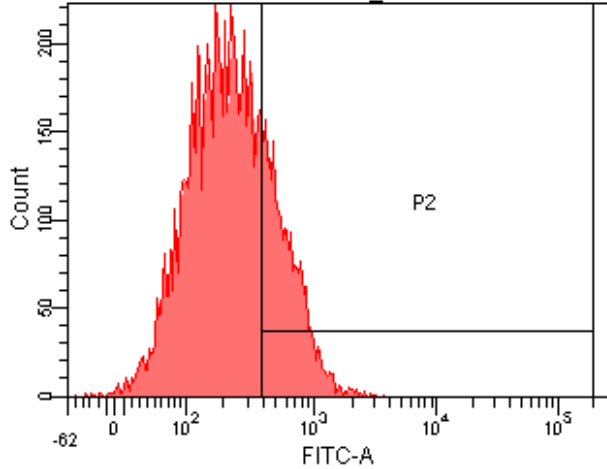
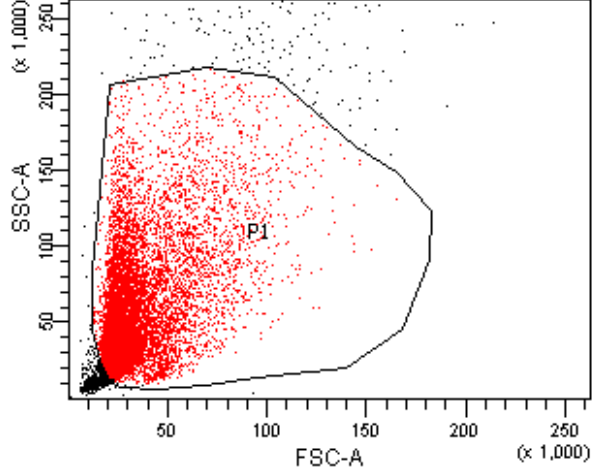


E. coli HSPs@glucan anti-dectin-1 mAb

Population	#Events	%Parent	%Total
■ All Events	11,265	####	100.0
■ P1	10,000	88.8	88.8
⊠ P2	8,181	81.8	72.6

E. coli HSPs@glucan anti-dectin-1 mAb

Population	#Events	%Parent	FITC-A Mean
■ All Events	11,265	####	1,226
■ P1	10,000	88.8	1,259
⊠ P2	8,181	81.8	1,488

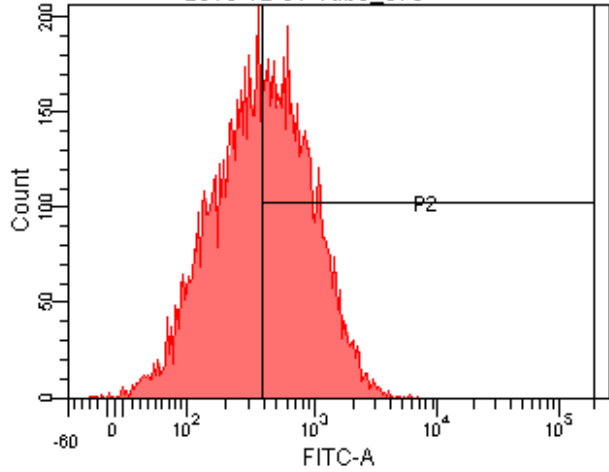
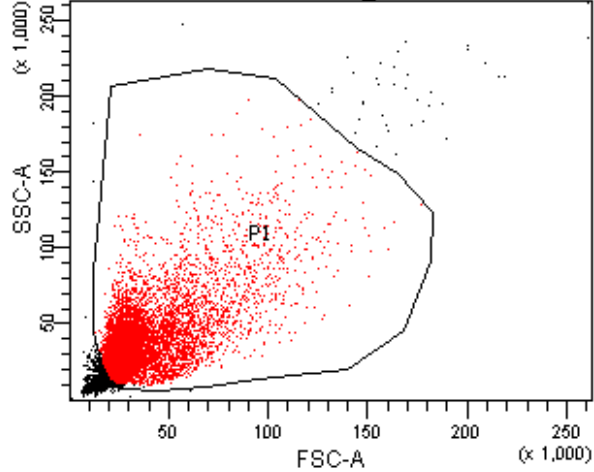


S. aureus HSPs anti-dectin-1 mAb

Population	#Events	%Parent	%Total
■ All Events	11,209	####	100.0
■ P1	10,000	89.2	89.2
⊗ P2	2,439	24.4	21.8

S. aureus HSPs anti-dectin-1 mAb

Population	#Events	%Parent	FITC-A Mean
■ All Events	11,209	####	307
■ P1	10,000	89.2	296
⊗ P2	2,439	24.4	636



S. aureus HSPs@glucan anti-dectin-1 mAb

Population	#Events	%Parent	%Total
■ All Events	12,580	####	100.0
■ P1	10,000	79.5	79.5
⊠ P2	4,974	49.7	39.5

S. aureus HSPs@glucan anti-dectin-1 mAb

Population	#Events	%Parent	FITC-A Mean
■ All Events	12,580	####	465
■ P1	10,000	79.5	526
⊠ P2	4,974	49.7	844