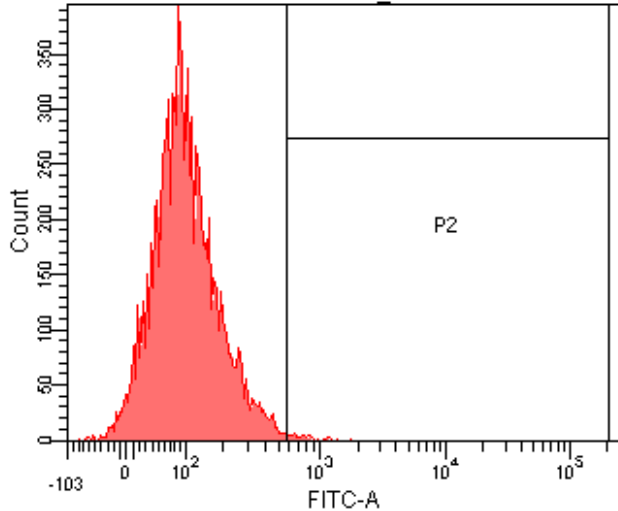
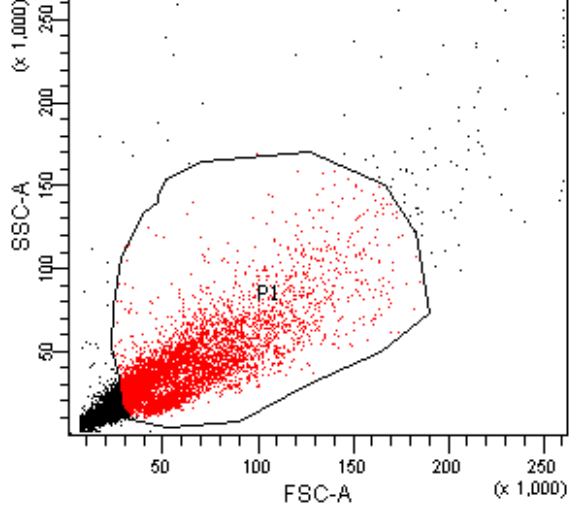


Blank			
Population	#Events	%Parent	%Total
■ All Events	17,428	####	100.0
■ P1	10,000	57.4	57.4
⊠ P2	21	0.1	0.1

Blank				FITC-A
Population	#Events	%Parent		Mean
■ All Events	17,428	####		50
■ P1	10,000	57.4		60
⊠ P2	21	0.1		4,529

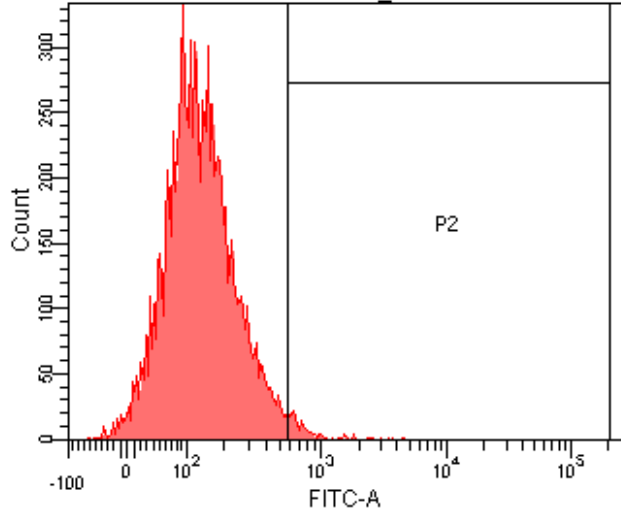
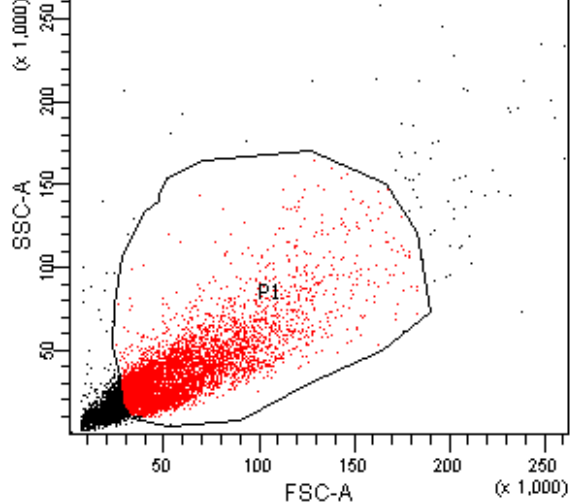


### DQ-OVA 0.5h

Population	#Events	%Parent	%Total
■ All Events	19,439	####	100.0
■ P1	10,000	51.4	51.4
⊠ P2	94	0.5	0.5

### DQ-OVA 0.5h

Population	#Events	%Parent	FITC-A Mean
■ All Events	19,439	####	84
■ P1	10,000	51.4	114
⊠ P2	94	0.5	834

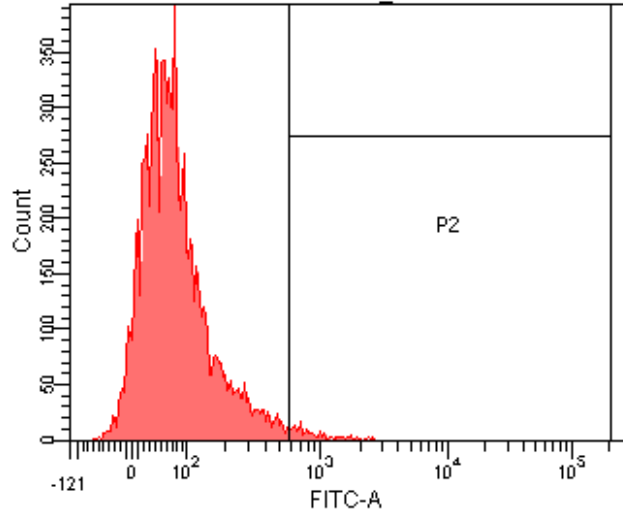
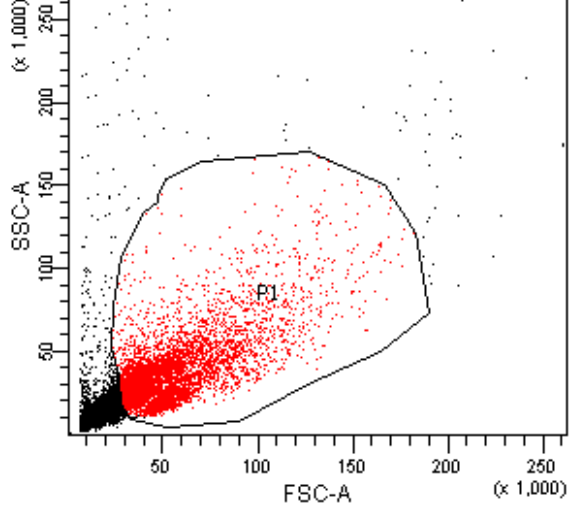


PS HSPs 0.5h

Population	#Events	%Parent	%Total
All Events	19,237	####	100.0
P1	10,000	52.0	52.0
P2	211	1.1	1.1

PS HSPs 0.5h

Population	#Events	%Parent	FITC-A Mean
All Events	19,237	####	114
P1	10,000	52.0	155
P2	211	1.1	917

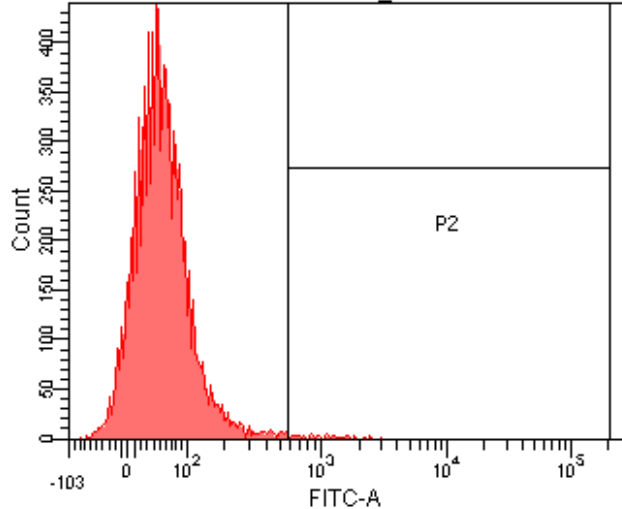
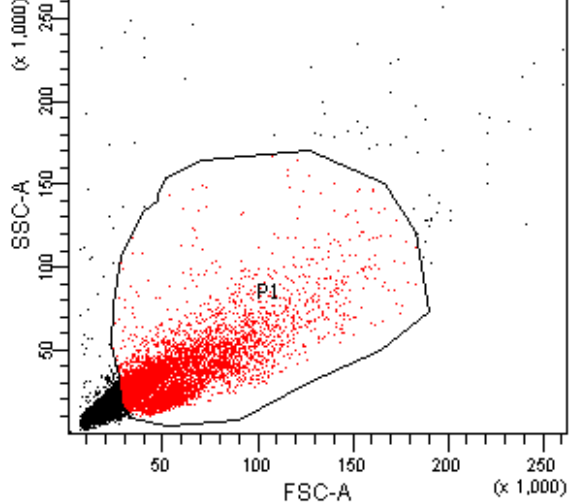


PS HSPs@glucan 0.5h

Population	#Events	%Parent	%Total
■ All Events	19,297	####	100.0
■ P1	10,000	51.8	51.8
⊠ P2	199	1.0	1.0

PS HSPs@glucan 0.5h

Population	#Events	%Parent	FITC-A Mean
■ All Events	19,297	####	72
■ P1	10,000	51.8	98
⊠ P2	199	1.0	932

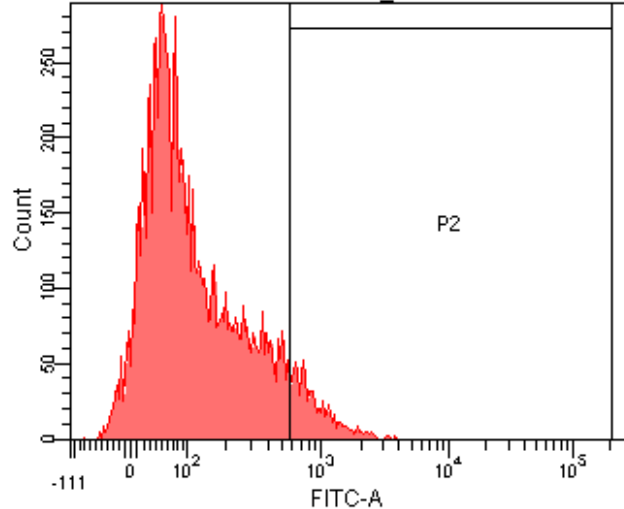
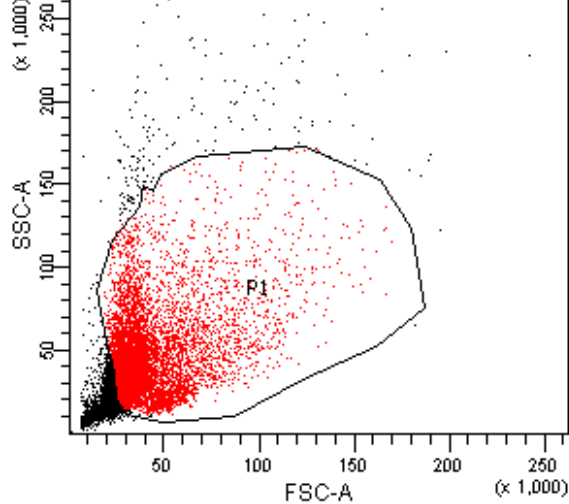


E. coli HSPs 0.5h

Population	#Events	%Parent	%Total
■ All Events	19,550	####	100.0
■ P1	10,000	51.2	51.2
⊠ P2	81	0.4	0.4

E. coli HSPs 0.5h

Population	#Events	%Parent	FITC-A Mean
■ All Events	19,550	####	49
■ P1	10,000	51.2	64
⊠ P2	81	0.4	1,094

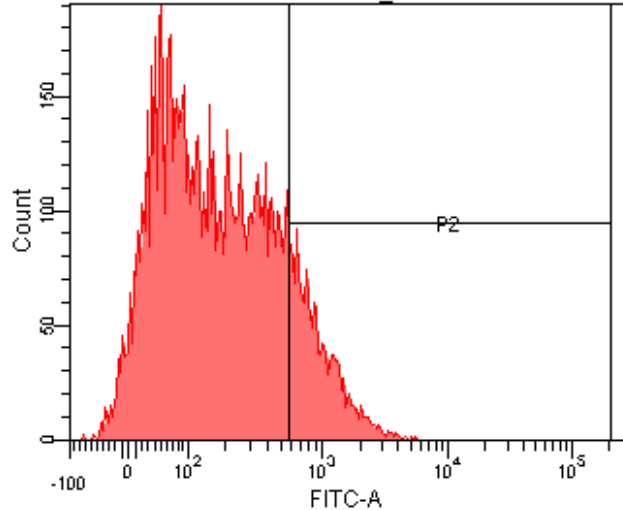
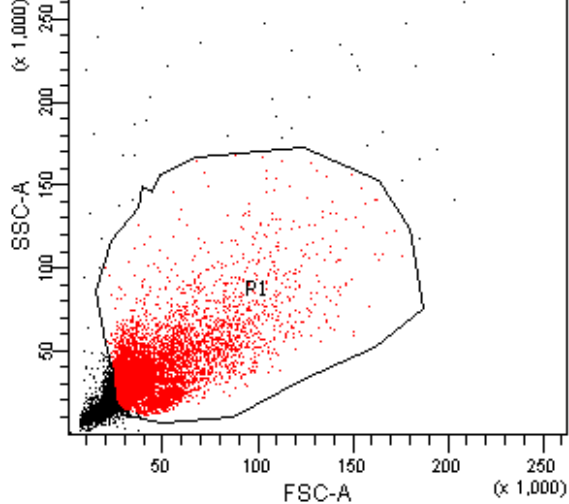


E. coli HSPs@glucan 0.5h

Population	#Events	%Parent	%Total
All Events	14,353	####	100.0
P1	10,000	69.7	69.7
P2	847	5.9	5.9

E. coli HSPs@glucan 0.5h

Population	#Events	%Parent	FITC-A Mean
All Events	14,353	####	161
P1	10,000	69.7	183
P2	847	5.9	1,080

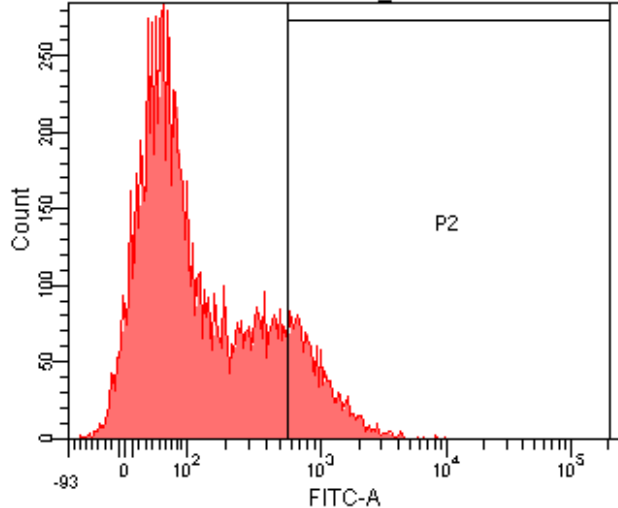
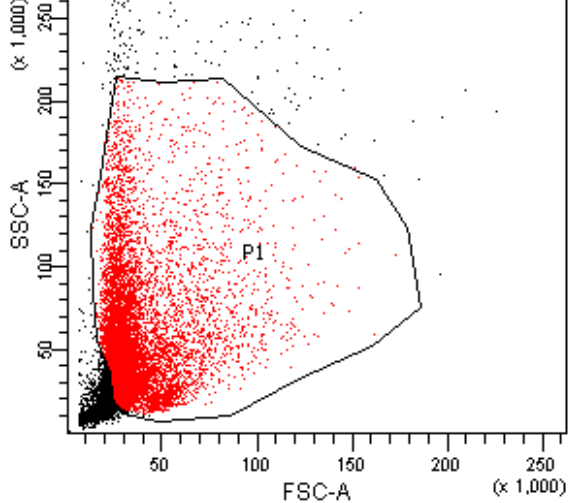


S. aureus HSPs 0.5h

Population	#Events	%Parent	%Total
■ All Events	15,248	####	100.0
■ P1	10,000	65.6	65.6
⊠ P2	1,608	10.5	10.5

S. aureus HSPs 0.5h

Population	#Events	%Parent	FITC-A Mean
■ All Events	15,248	####	234
■ P1	10,000	65.6	301
⊠ P2	1,608	10.5	1,049



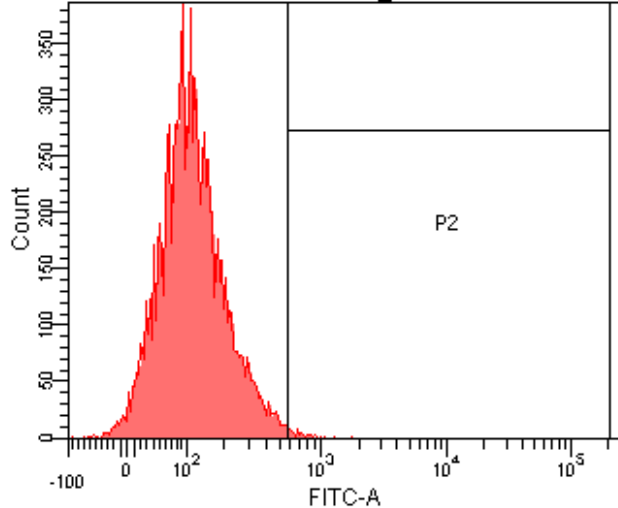
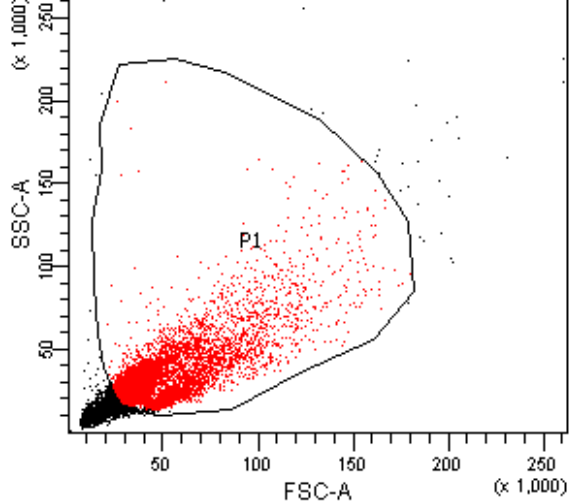
S. aureus HSPs@glucan 0.5h

Population	#Events	%Parent	%Total
■ All Events	15,619	####	100.0
■ P1	11,034	70.6	70.6
⊠ P2	1,692	10.8	10.8

S. aureus HSPs@glucan 0.5h

Population	#Events	%Parent	FITC-A Mean
■ All Events	15,619	####	217
■ P1	11,034	70.6	254
⊠ P2	1,692	10.8	1,174



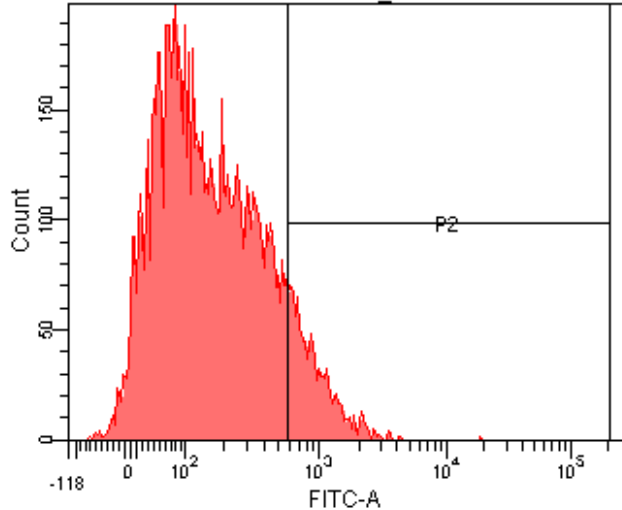
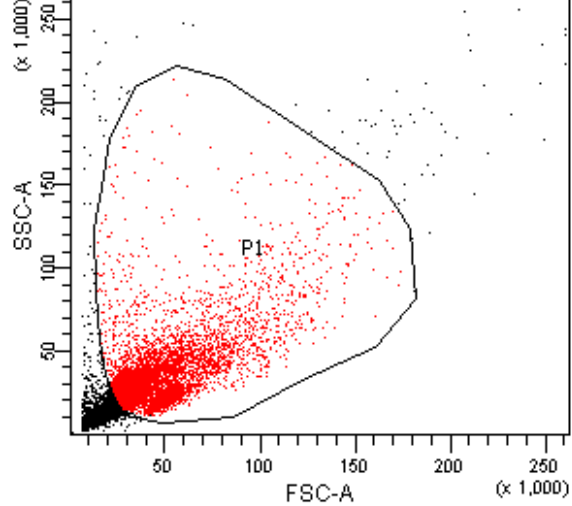


#### DQ-OVA 1h

Population	#Events	%Parent	%Total
All Events	17,622	####	100.0
P1	10,000	56.7	56.7
P2	67	0.4	0.4

#### DQ-OVA 1h

Population	#Events	%Parent	FITC-A Mean
All Events	17,622	####	95
P1	10,000	56.7	127
P2	67	0.4	920

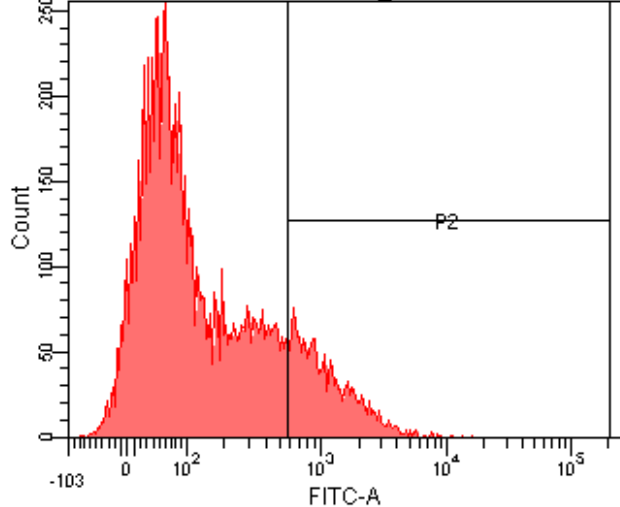
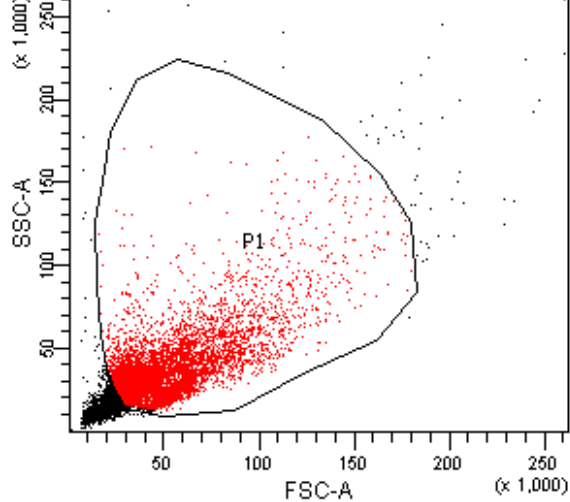


PS HSPs 1h

Population	#Events	%Parent	%Total
■ All Events	16,144	####	100.0
■ P1	10,002	62.0	62.0
⊠ P2	1,233	7.6	7.6

PS HSPs 1h

Population	#Events	%Parent	FITC-A Mean
■ All Events	16,144	####	196
■ P1	10,002	62.0	253
⊠ P2	1,233	7.6	1,011

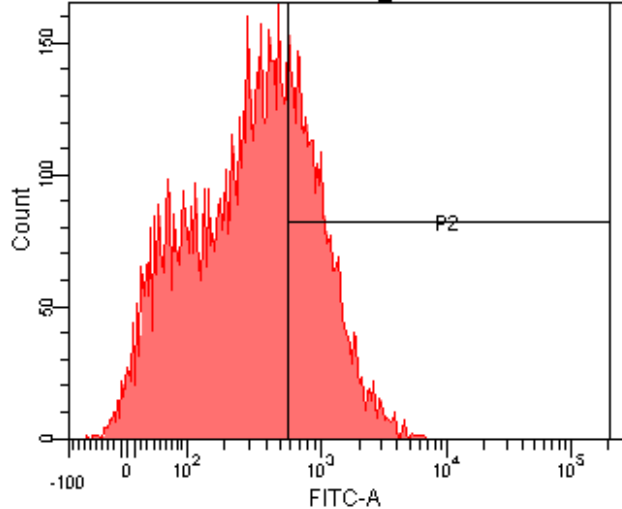
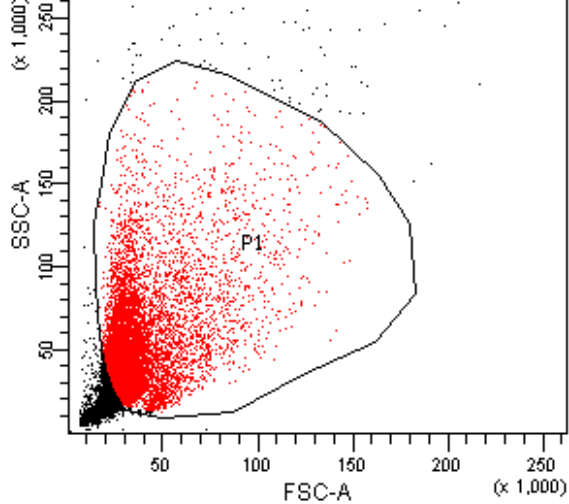


PS HSPs@glucan 1h

Population	#Events	%Parent	%Total
■ All Events	18,278	####	100.0
■ P1	10,000	54.7	54.7
⊠ P2	1,915	10.5	10.5

PS HSPs@glucan 1h

Population	#Events	%Parent	FITC-A Mean
■ All Events	18,278	####	224
■ P1	10,000	54.7	320
⊠ P2	1,915	10.5	1,315

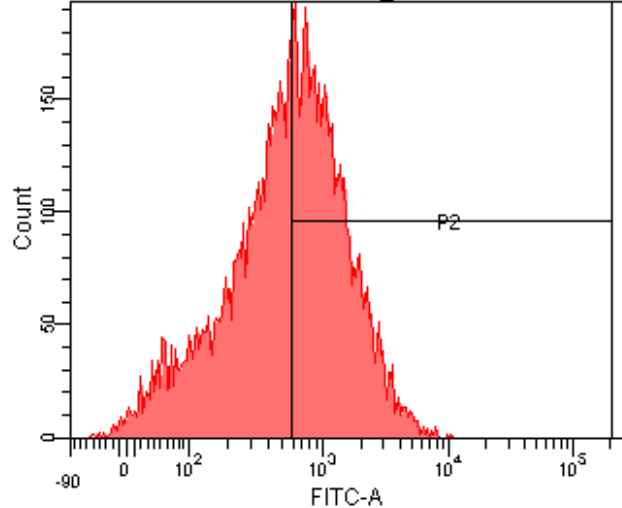
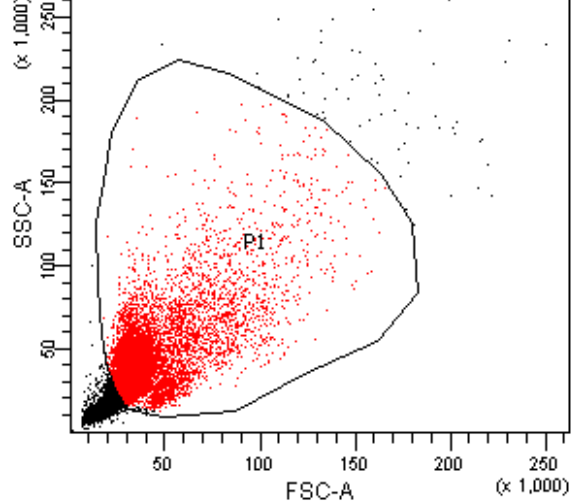


### E.coli HSPs 1h

Population	#Events	%Parent	%Total
■ All Events	14,292	####	100.0
■ P1	10,000	70.0	70.0
⊠ P2	3,156	22.1	22.1

### E.coli HSPs 1h

Population	#Events	%Parent	FITC-A Mean
■ All Events	14,292	####	399
■ P1	10,000	70.0	495
⊠ P2	3,156	22.1	1,156

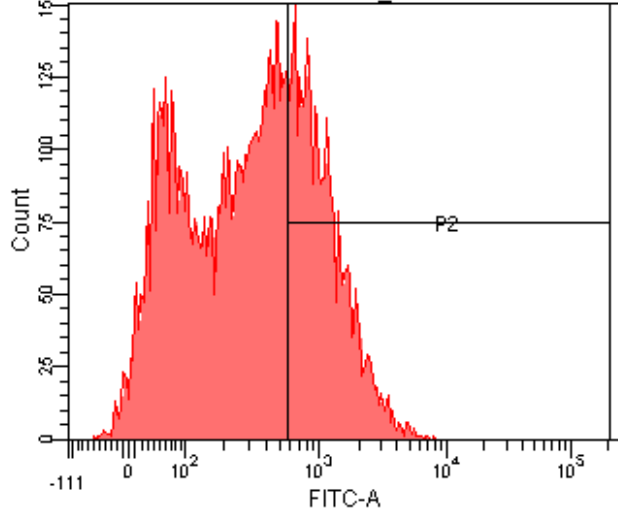
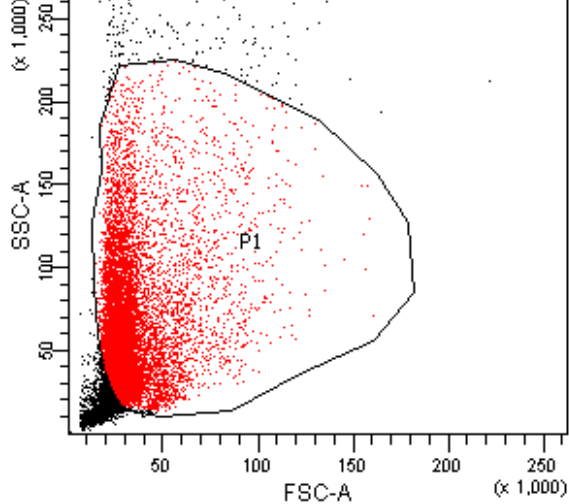


E.coli HSPs@glucan 1h

Population	#Events	%Parent	%Total
All Events	13,963	####	100.0
P1	10,000	71.6	71.6
P2	5,415	38.8	38.8

E.coli HSPs@glucan 1h

Population	#Events	%Parent	FITC-A Mean
All Events	13,963	####	671
P1	10,000	71.6	814
P2	5,415	38.8	1,375

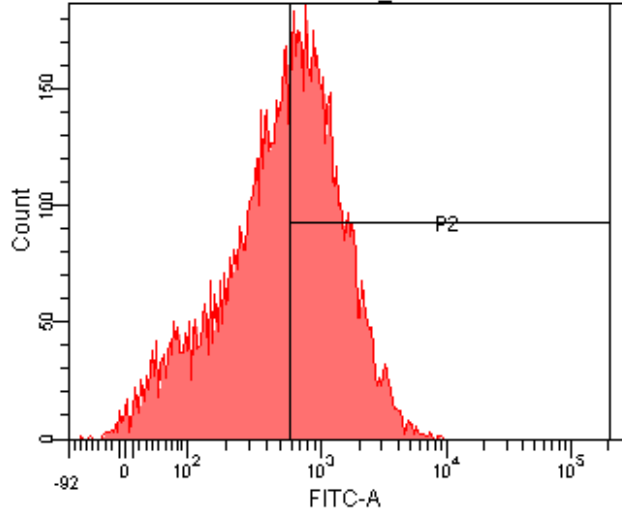
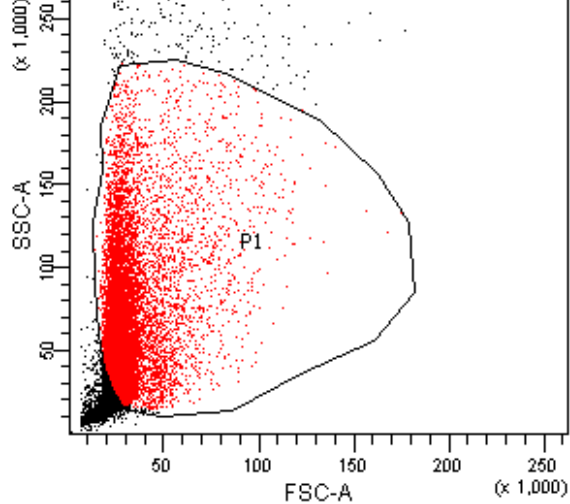


S. aureus HSPs 1h

Population	#Events	%Parent	%Total
■ All Events	13,770	####	100.0
■ P1	10,000	72.6	72.6
⊠ P2	3,542	25.7	25.7

S. aureus HSPs 1h

Population	#Events	%Parent	FITC-A Mean
■ All Events	13,770	####	465
■ P1	10,000	72.6	538
⊠ P2	3,542	25.7	1,324

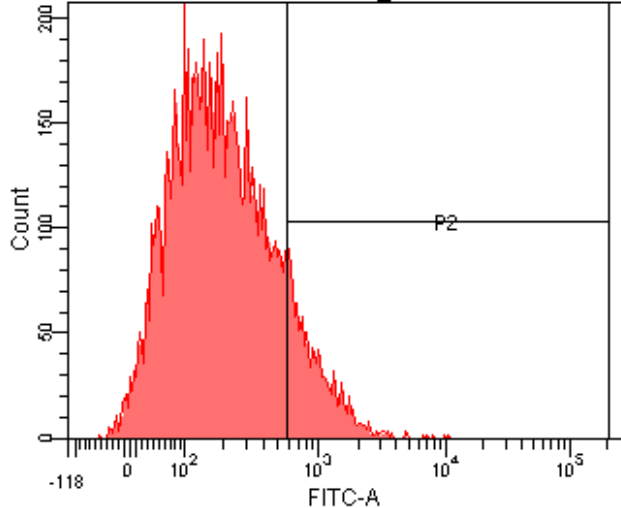
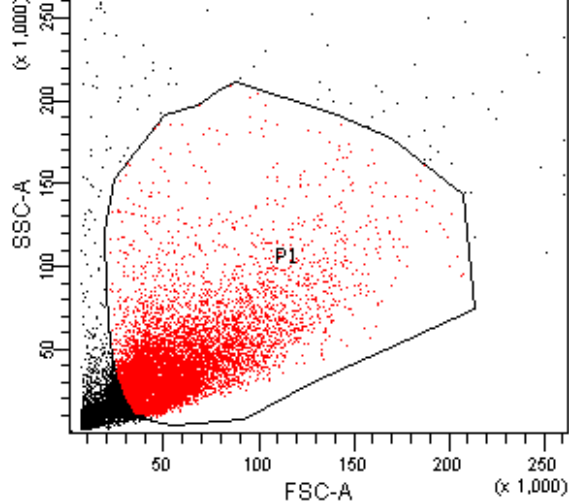


S. aureus HSPs@glucan 1h

Population	#Events	%Parent	%Total
■ All Events	13,196	####	100.0
■ P1	10,000	75.8	75.8
⊠ P2	5,233	39.7	39.7

S. aureus HSPs@glucan 1h

Population	#Events	%Parent	FITC-A Mean
■ All Events	13,196	####	680
■ P1	10,000	75.8	769
⊠ P2	5,233	39.7	1,392



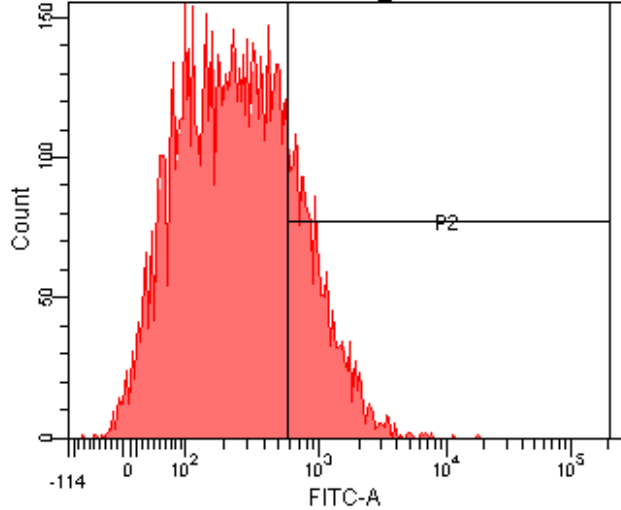
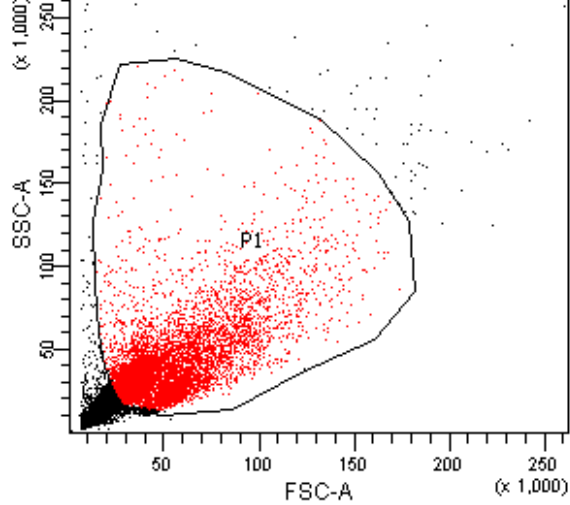
### DQ-OVA 4h

Population	#Events	%Parent	%Total
■ All Events	17,146	####	100.0
■ P1	10,000	58.3	58.3
⊠ P2	1,318	7.7	7.7

### DQ-OVA 4h

Population	#Events	%Parent	FITC-A Mean
■ All Events	17,146	####	202
■ P1	10,000	58.3	295
⊠ P2	1,318	7.7	1,068



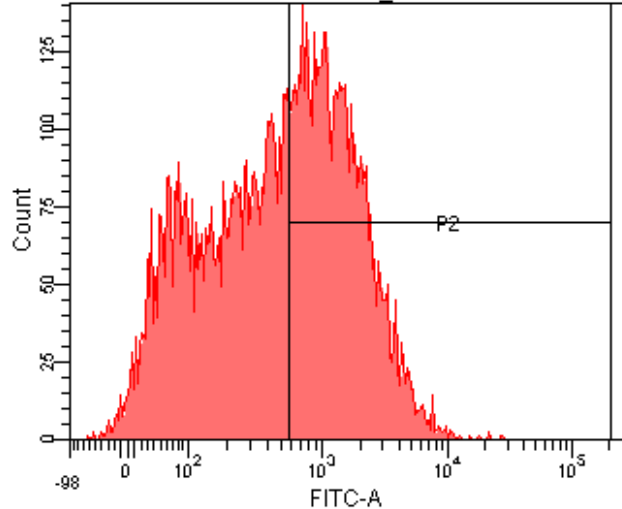
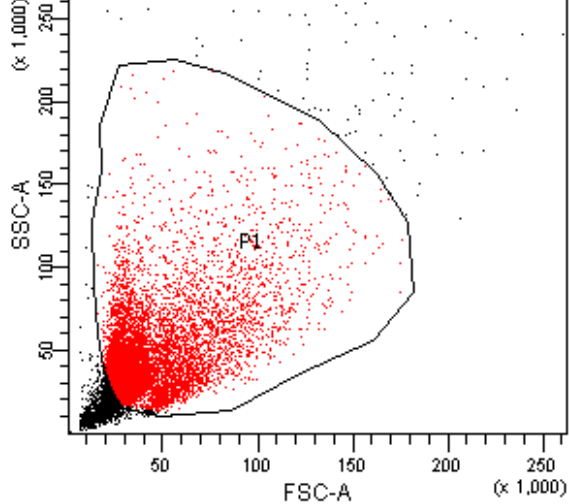


PS HSPs 4h

Population	#Events	%Parent	%Total
■ All Events	15,310	####	100.0
■ P1	10,000	65.3	65.3
⊠ P2	2,141	14.0	14.0

PS HSPs 4h

Population	#Events	%Parent	FITC-A Mean
■ All Events	15,310	####	300
■ P1	10,000	65.3	394
⊠ P2	2,141	14.0	1,129

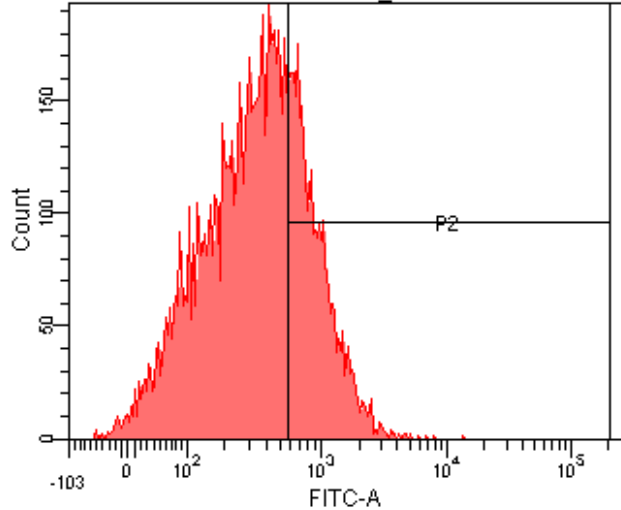
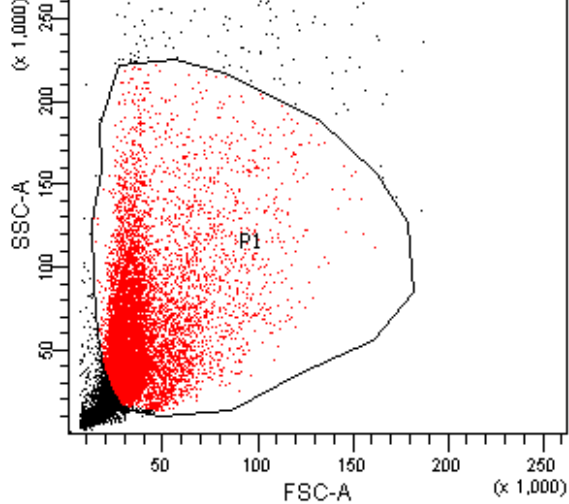


PS HSPs@glucan 4h

Population	#Events	%Parent	%Total
■ All Events	14,768	####	100.0
■ P1	10,000	67.7	67.7
⊠ P2	5,127	34.7	34.7

PS HSPs@glucan 4h

Population	#Events	%Parent	FITC-A Mean
■ All Events	14,768	####	689
■ P1	10,000	67.7	904
⊠ P2	5,127	34.7	1,664

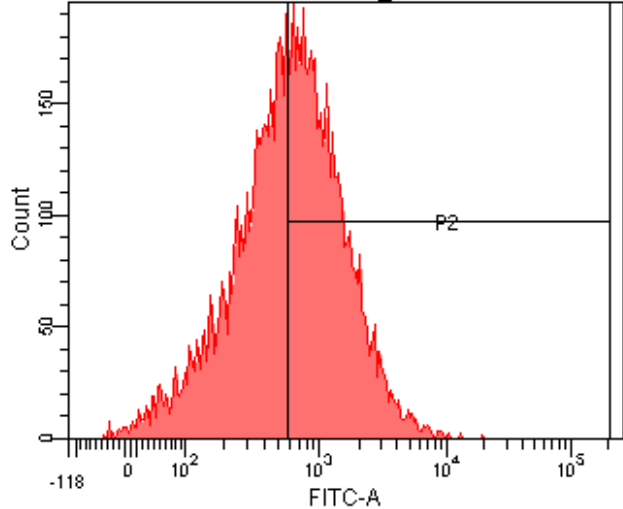
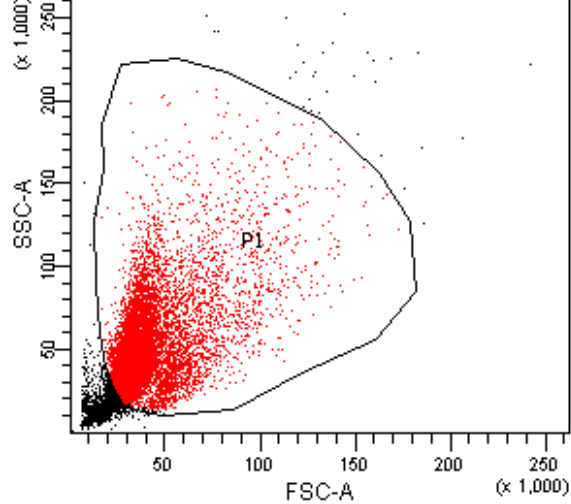


#### E.coli HSPs 4h

Population	#Events	%Parent	%Total
■ All Events	13,587	####	100.0
■ P1	10,000	73.6	73.6
⊠ P2	2,979	21.9	21.9

#### E.coli HSPs 4h

Population	#Events	%Parent	FITC-A Mean
■ All Events	13,587	####	396
■ P1	10,000	73.6	475
⊠ P2	2,979	21.9	1,058

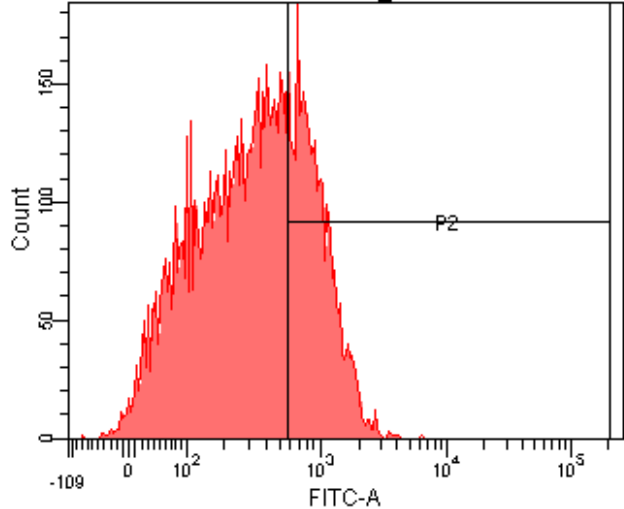
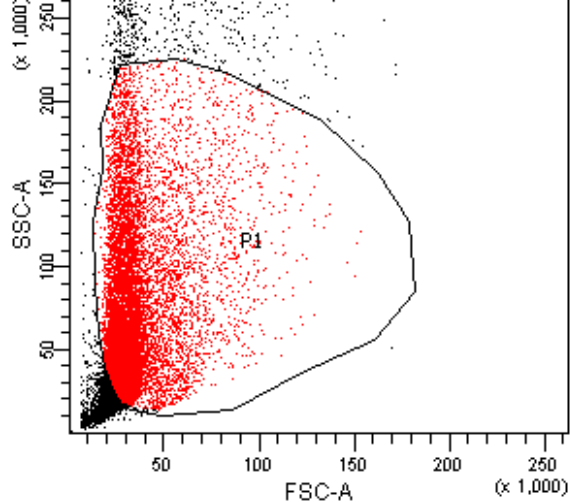


E.coli HSPs@glucan 4h

Population	#Events	%Parent	%Total
■ All Events	13,044	####	100.0
■ P1	10,000	76.7	76.7
⊠ P2	5,378	41.2	41.2

E.coli HSPs@glucan 4h

Population	#Events	%Parent	FITC-A Mean
■ All Events	13,044	####	706
■ P1	10,000	76.7	854
⊠ P2	5,378	41.2	1,360

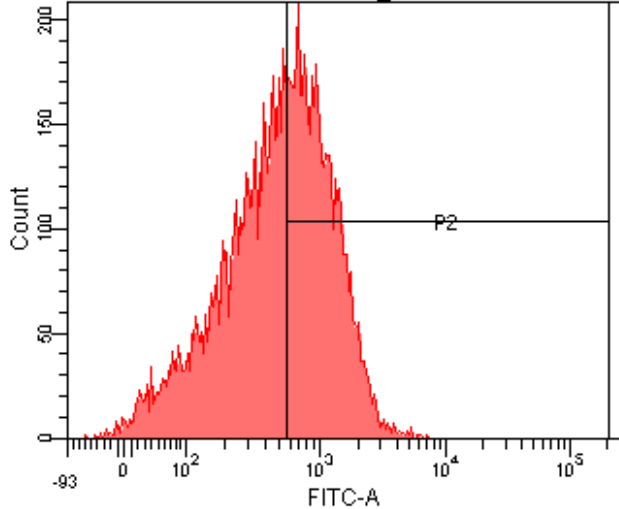
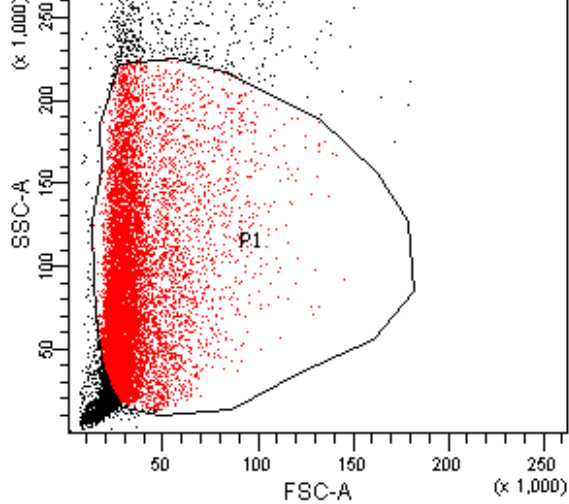


S. aureus HSPs 4h

Population	#Events	%Parent	%Total
All Events	13,618	####	100.0
P1	10,000	73.4	73.4
P2	3,930	28.9	28.9

S. aureus HSPs 4h

Population	#Events	%Parent	FITC-A Mean
All Events	13,618	####	498
P1	10,000	73.4	471
P2	3,930	28.9	1,238

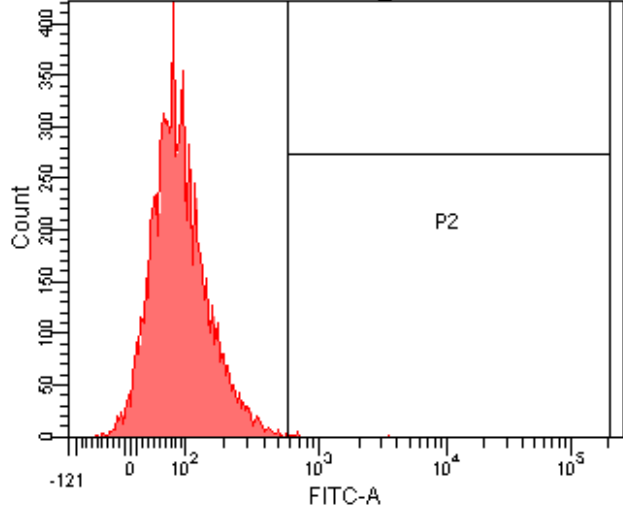
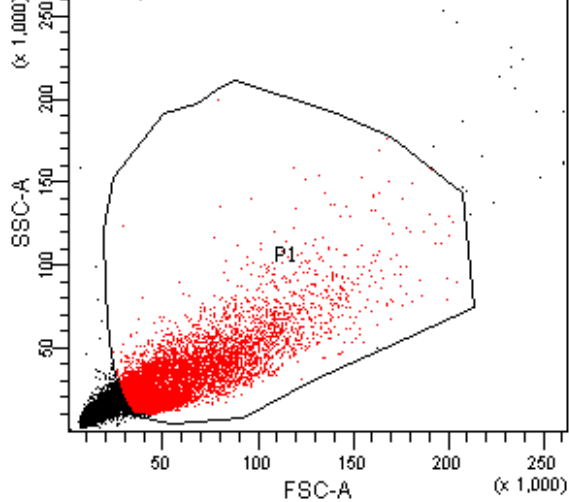


S. aureus HSPs@glucan 4h

Population	#Events	%Parent	%Total
All Events	13,125	####	100.0
P1	10,000	76.2	76.2
P2	5,499	41.9	41.9

S. aureus HSPs@glucan 4h

Population	#Events	%Parent	FITC-A Mean
All Events	13,125	####	708
P1	10,000	76.2	672
P2	5,499	41.9	1,365

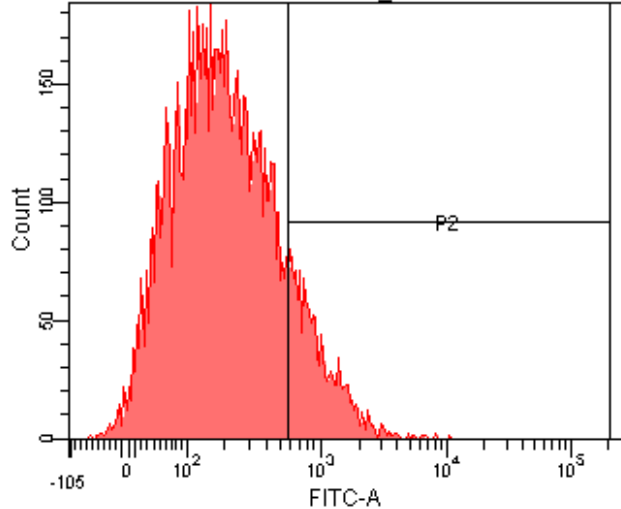
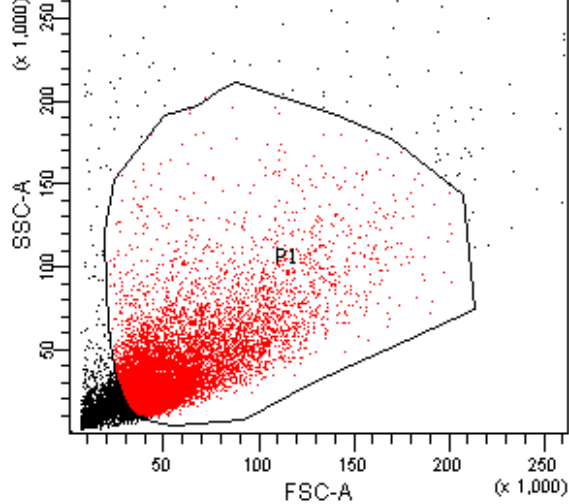


### DQ-OVA 24h

Population	#Events	%Parent	%Total
All Events	22,815	####	100.0
P1	9,113	39.9	39.9
P2	20	0.1	0.1

### DQ-OVA 24h

Population	#Events	%Parent	FITC-A Mean
All Events	22,815	####	60
P1	9,113	39.9	94
P2	20	0.1	884



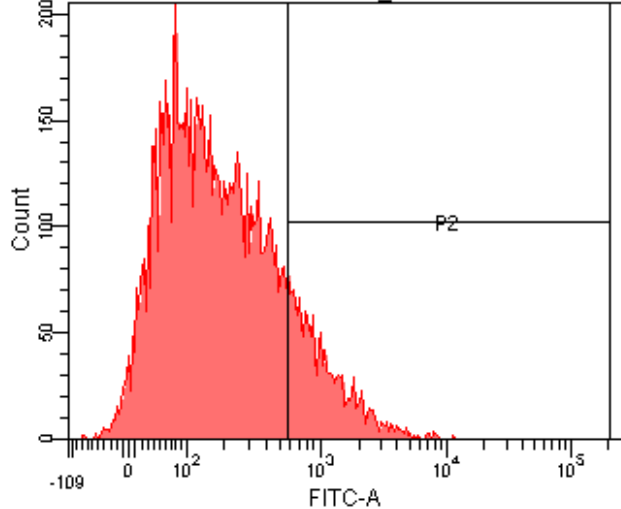
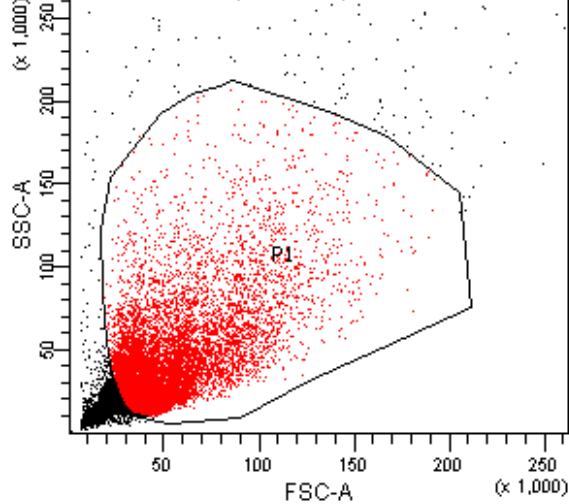
### PS HSPs 24h

Population	#Events	%Parent	%Total
■ All Events	16,586	####	100.0
■ P1	10,000	60.3	60.3
⊠ P2	1,442	8.7	8.7

### PS HSPs 24h

Population	#Events	%Parent	FITC-A Mean
■ All Events	16,586	####	220
■ P1	10,000	60.3	310
⊠ P2	1,442	8.7	1,125



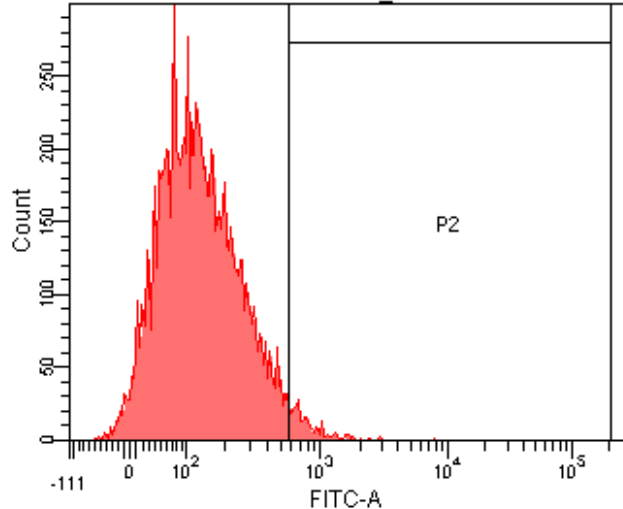
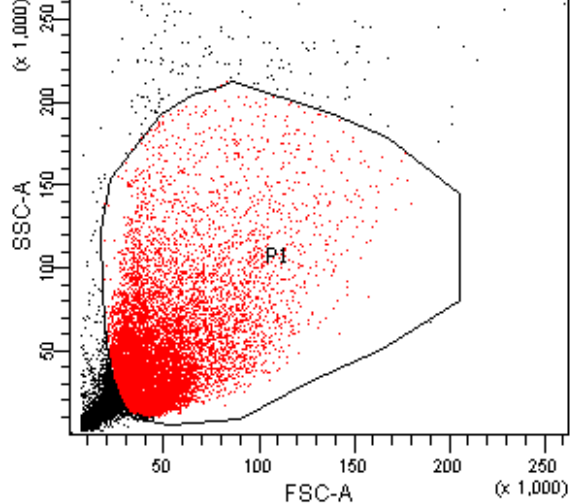


PS HSPs@glucan 24h

Population	#Events	%Parent	%Total
■ All Events	14,434	####	100.0
■ P1	10,000	69.3	69.3
⊠ P2	1,648	11.4	11.4

PS HSPs@glucan 24h

Population	#Events	%Parent	FITC-A Mean
■ All Events	14,434	####	282
■ P1	10,000	69.3	337
⊠ P2	1,648	11.4	1,423

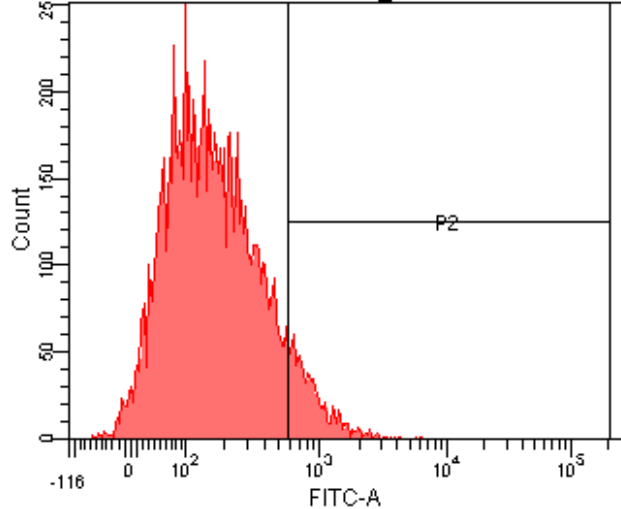
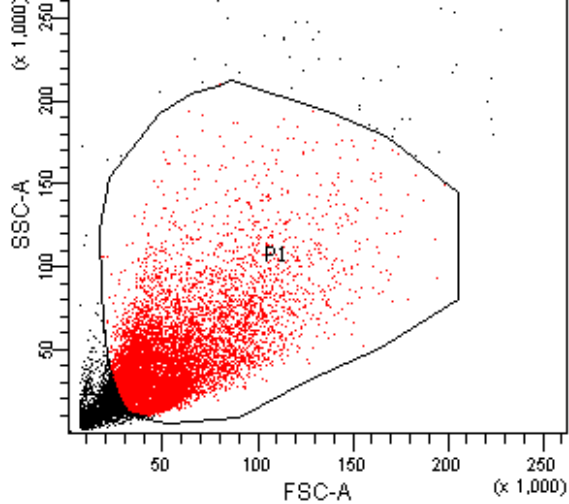


#### E.coli HSPs 24h

Population	#Events	%Parent	%Total
All Events	14,350	####	100.0
P1	10,000	69.7	69.7
P2	447	3.1	3.1

#### E.coli HSPs 24h

Population	#Events	%Parent	FITC-A Mean
All Events	14,350	####	144
P1	10,000	69.7	163
P2	447	3.1	1,053

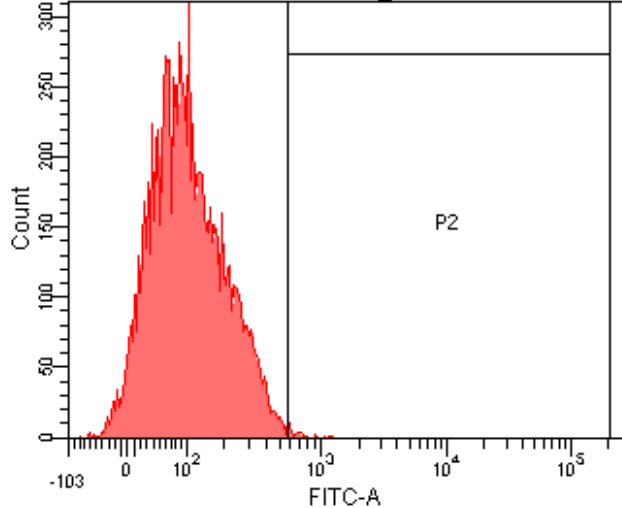
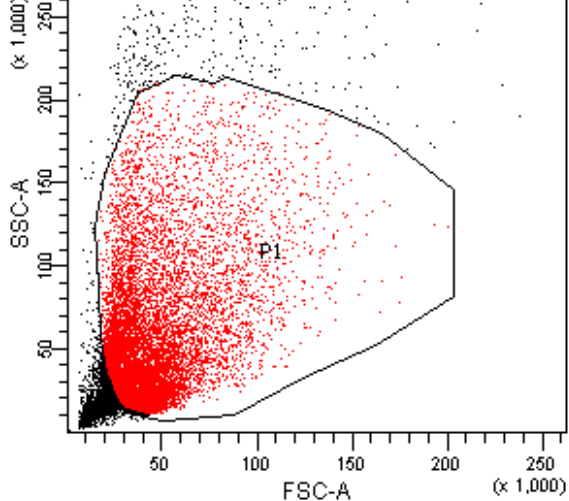


E.coli HSPs@glucan 24h

Population	#Events	%Parent	%Total
■ All Events	14,230	####	100.0
■ P1	10,000	70.3	70.3
⊠ P2	845	5.9	5.9

E.coli HSPs@glucan 24h

Population	#Events	%Parent	FITC-A Mean
■ All Events	14,230	####	187
■ P1	10,000	70.3	235
⊠ P2	845	5.9	995

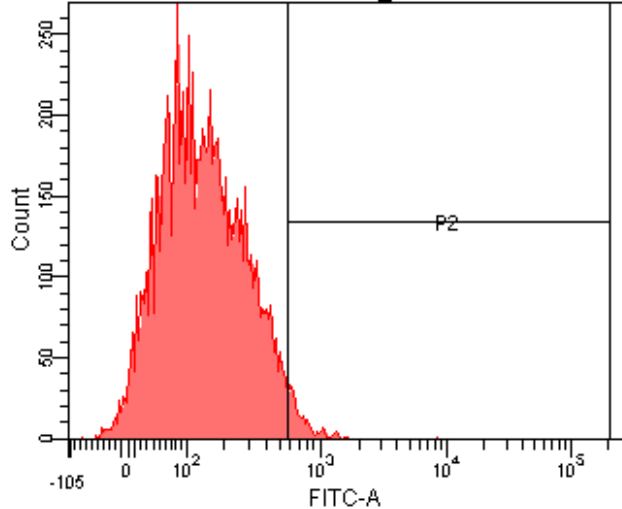
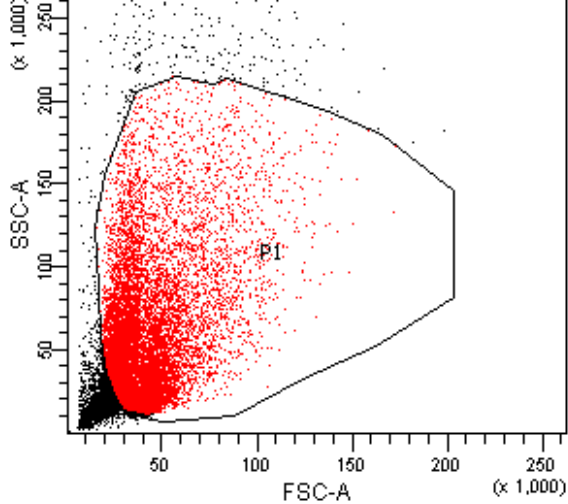


S. aureus HSPs 24h

Population	#Events	%Parent	%Total
All Events	14,168	####	100.0
P1	10,000	70.6	70.6
P2	260	1.8	1.8

S. aureus HSPs 24h

Population	#Events	%Parent	FITC-A Mean
All Events	14,168	####	116
P1	10,000	70.6	119
P2	260	1.8	884

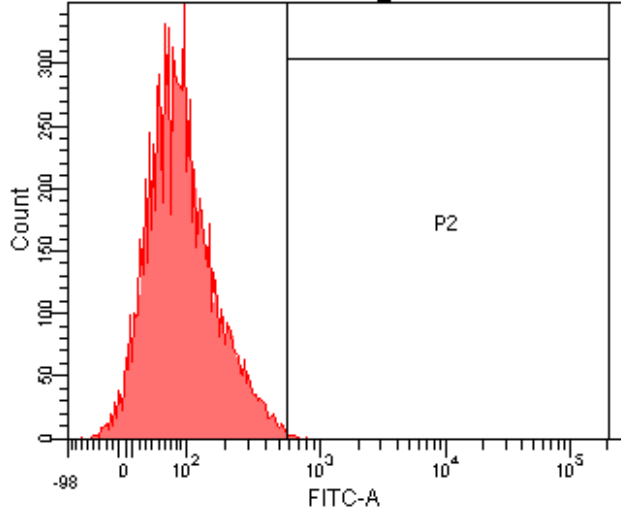
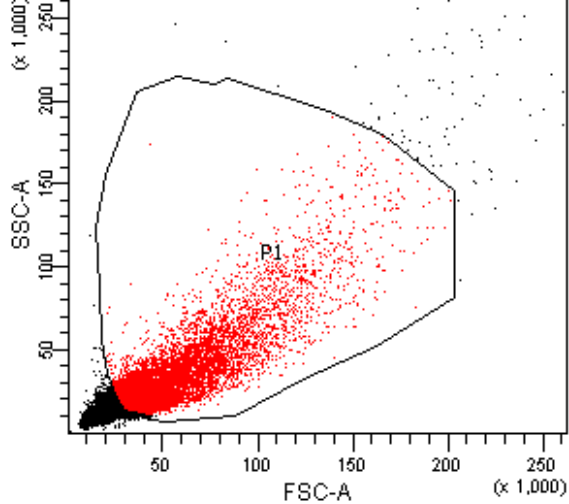


S. aureus HSPs@glucan 24h

Population	#Events	%Parent	%Total
All Events	14,393	####	100.0
P1	10,000	69.5	69.5
P2	460	3.2	3.2

S. aureus HSPs@glucan 24h

Population	#Events	%Parent	FITC-A Mean
All Events	14,393	####	148
P1	10,000	69.5	170
P2	460	3.2	906

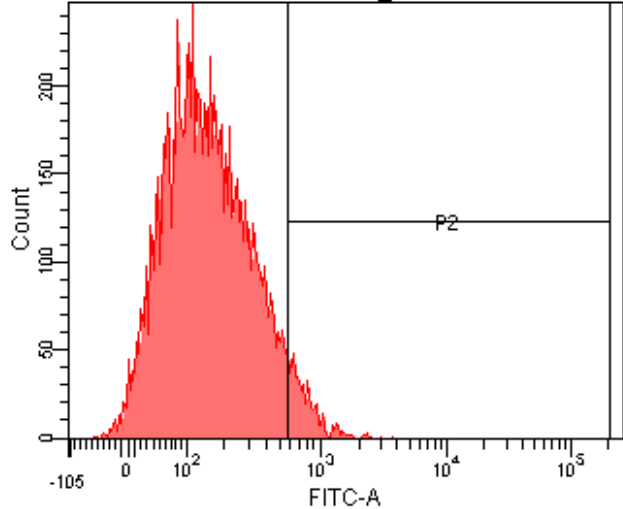
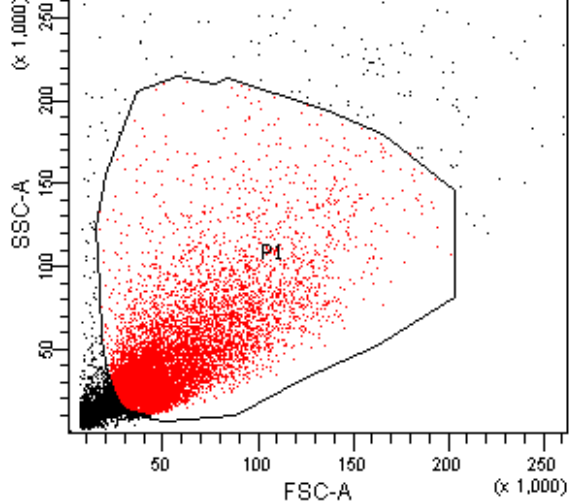


DQ-OVA 48h

Population	#Events	%Parent	%Total
■ All Events	21,130	####	100.0
■ P1	10,000	47.3	47.3
⊠ P2	65	0.3	0.3

DQ-OVA 48h

Population	#Events	%Parent	FITC-A Mean
■ All Events	21,130	####	71
■ P1	10,000	47.3	103
⊠ P2	65	0.3	775

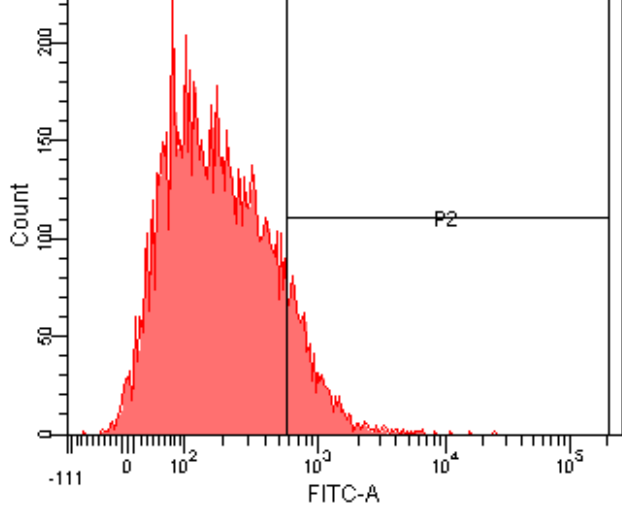
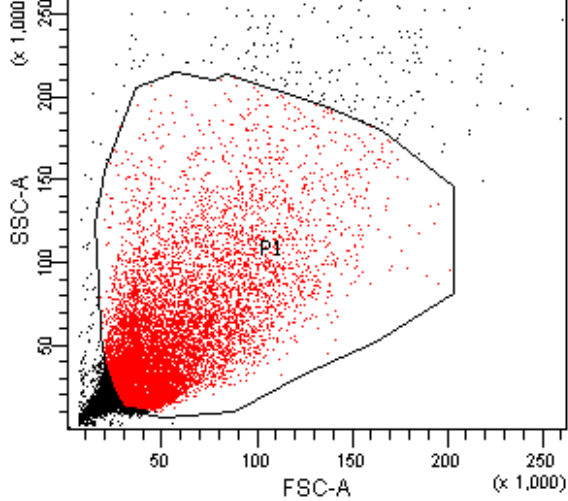


PS HSPs 48h

Population	#Events	%Parent	%Total
All Events	15,264	####	100.0
P1	10,000	65.5	65.5
P2	600	3.9	3.9

PS HSPs 48h

Population	#Events	%Parent	FITC-A Mean
All Events	15,264	####	156
P1	10,000	65.5	198
P2	600	3.9	917



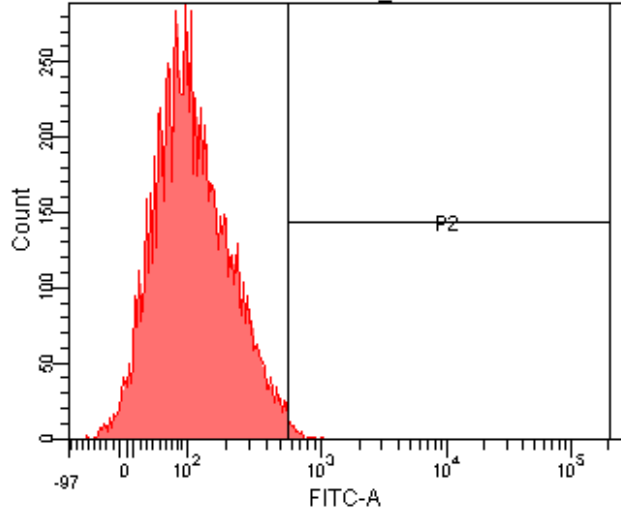
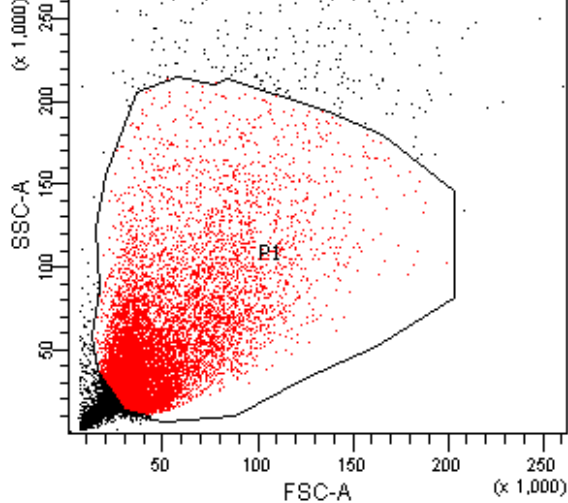
PS HSPs@glucan 48h

Population	#Events	%Parent	%Total
All Events	13,948	####	100.0
P1	10,000	71.7	71.7
P2	1,405	10.1	10.1

PS HSPs@glucan 48h

Population	#Events	%Parent	FITC-A Mean
All Events	13,948	####	248
P1	10,000	71.7	278
P2	1,405	10.1	####



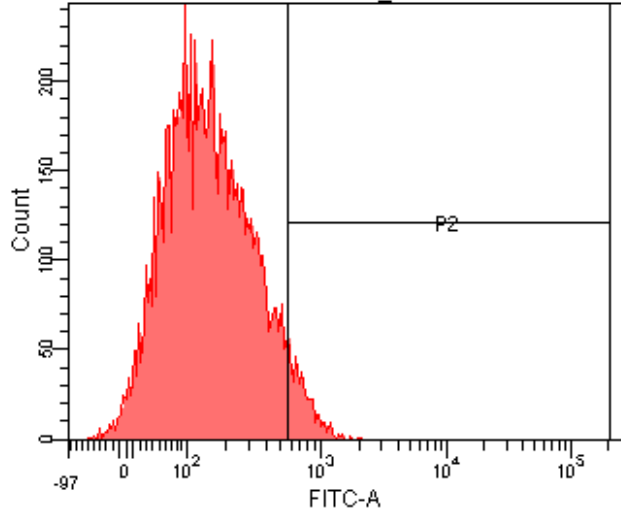
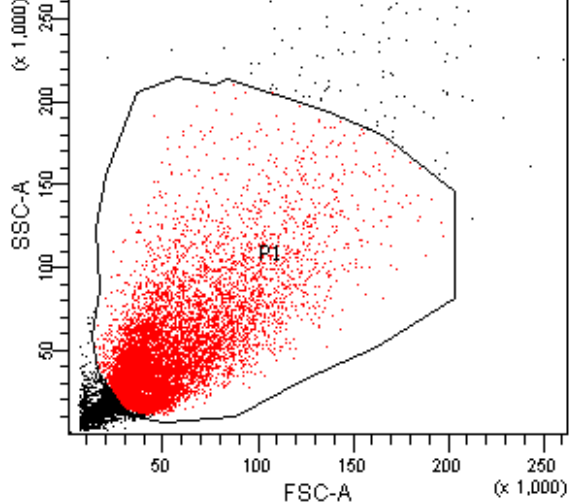


E. coli HSPs 48h

Population	#Events	%Parent	%Total
■ All Events	13,455	####	100.0
■ P1	10,000	74.3	74.3
⊠ P2	274	2.0	2.0

E. coli HSPs 48h

Population	#Events	%Parent	FITC-A Mean
■ All Events	13,455	####	125
■ P1	10,000	74.3	130
⊠ P2	274	2.0	855

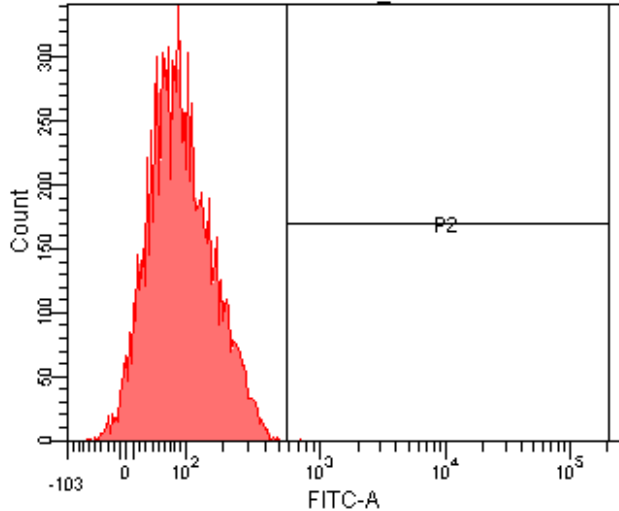
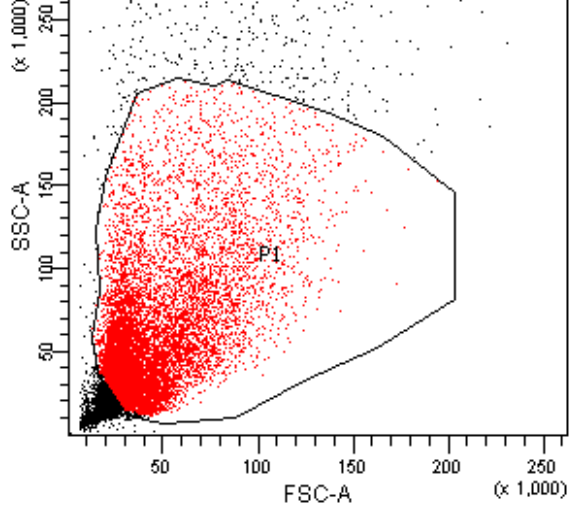


E. coli HSPs@glucan 48h

Population	#Events	%Parent	%Total
All Events	13,344	####	100.0
P1	10,000	74.9	74.9
P2	563	4.2	4.2

E. coli HSPs@glucan 48h

Population	#Events	%Parent	FITC-A Mean
All Events	13,344	####	168
P1	10,000	74.9	197
P2	563	4.2	862

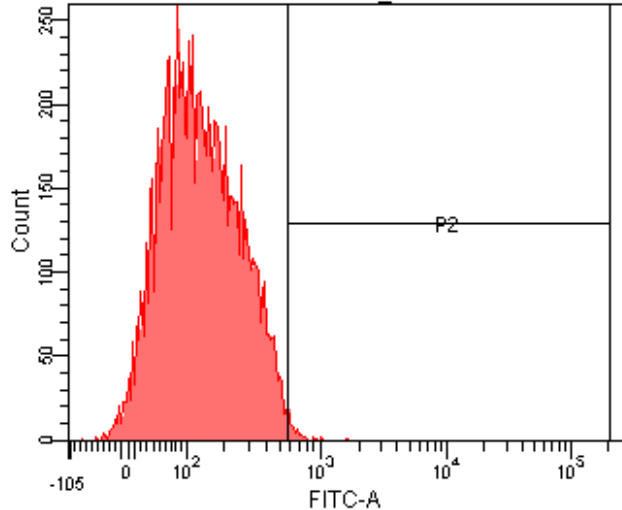
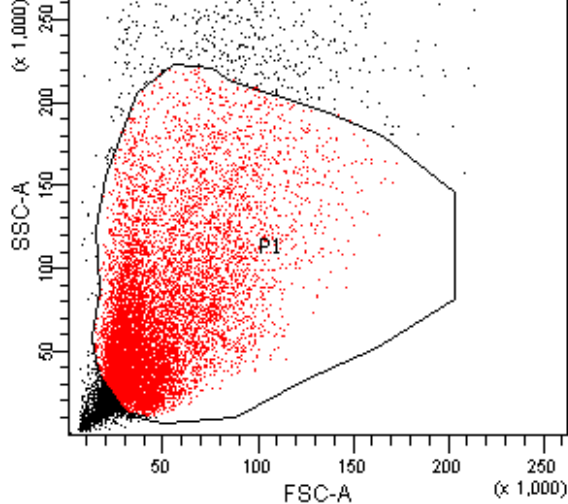


S. aureus HSPs 48h

Population	#Events	%Parent	%Total
All Events	13,394	####	100.0
P1	10,000	74.7	74.7
P2	89	0.7	0.7

S. aureus HSPs 48h

Population	#Events	%Parent	FITC-A Mean
All Events	13,394	####	99
P1	10,000	74.7	100
P2	89	0.7	816



*S. aureus* HSPs@glucan 48h

Population	#Events	%Parent	%Total
All Events	12,931	####	100.0
P1	10,000	77.3	77.3
P2	504	3.9	3.9

*S. aureus* HSPs@glucan 48h

Population	#Events	%Parent	FITC-A Mean
All Events	12,931	####	166
P1	10,000	77.3	155
P2	504	3.9	810