

Electronic Supplementary Information

Cobalt phosphide embedded in graphene nanosheet network as a high-performance anode for Li-ion batteries

Yang Yang,^a Yufeng jiang,^a Wenbin Fu,^{*b} Xiao-Zhen Liao,^a Yu-Shi He,^a Wan Tang,^a Faisal M. Alamgir^c and Zi-Feng Ma^{*a}

^a *Shanghai Electrochemical Energy Devices Center, School of Chemistry and Chemical Engineering, Shanghai Jiao Tong University, Shanghai, 200240, China*

^b *School of Physical Science and Technology, Lanzhou University, Lanzhou 730000, China*

^c *School of Materials Science and Engineering, Georgia Institute of Technology, Atlanta, Georgia, 30332, United States*

*Corresponding author.

E-mail addresses: zfma@sjtu.edu.cn (Zi-Feng Ma), fuwb15@lzu.edu.cn (Wenbin Fu)

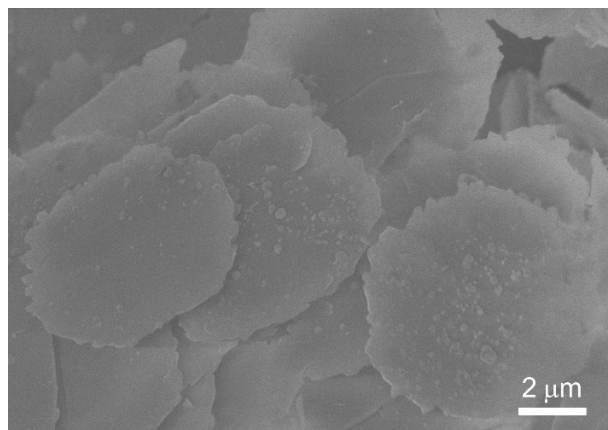


Figure S1. SEM image of CoP microplates.

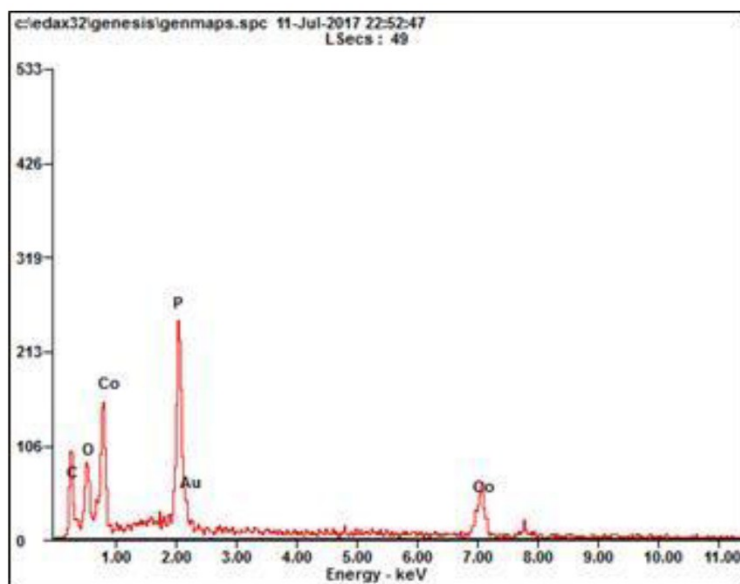


Figure S2. EDS spectrum of CoP/rGO nanocomposite.

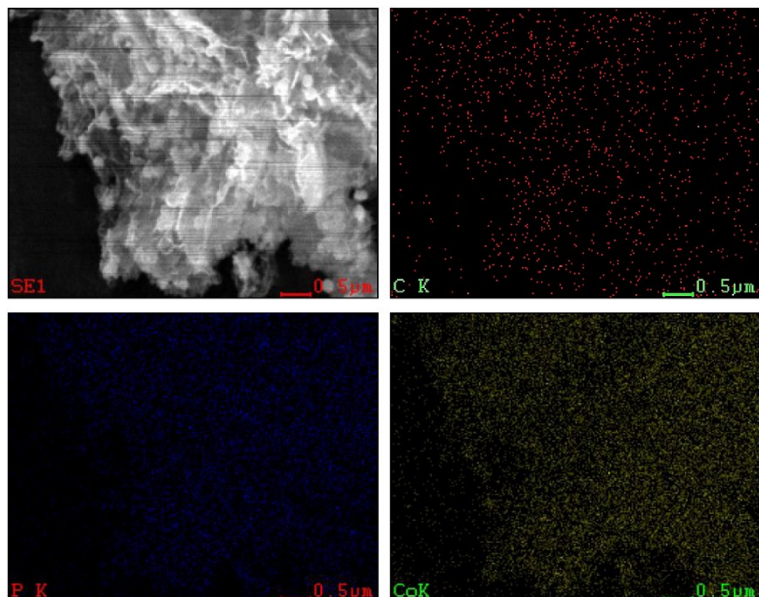


Figure S3. EDS maps of C, P and Co elements for the CoP/rGO nanocomposite.

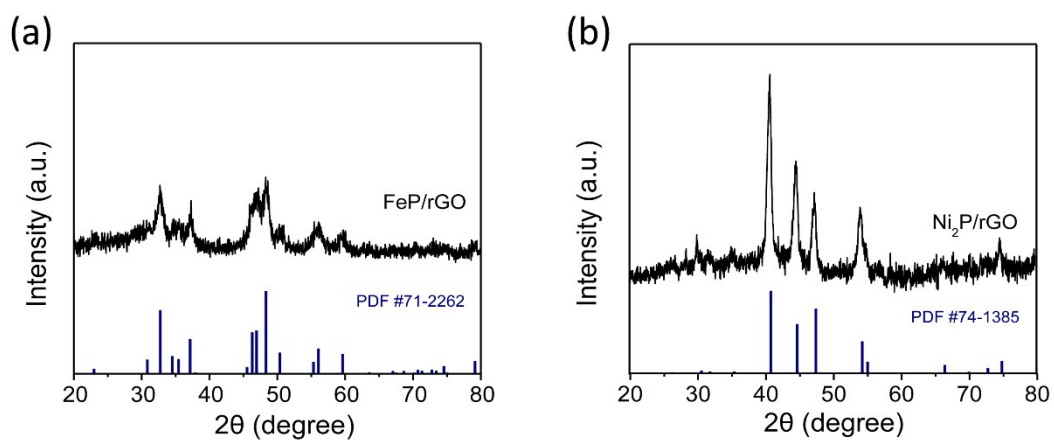


Figure S4. XRD patterns for (a) FeP/rGO and (b) Ni₂P/rGO nanocomposites.

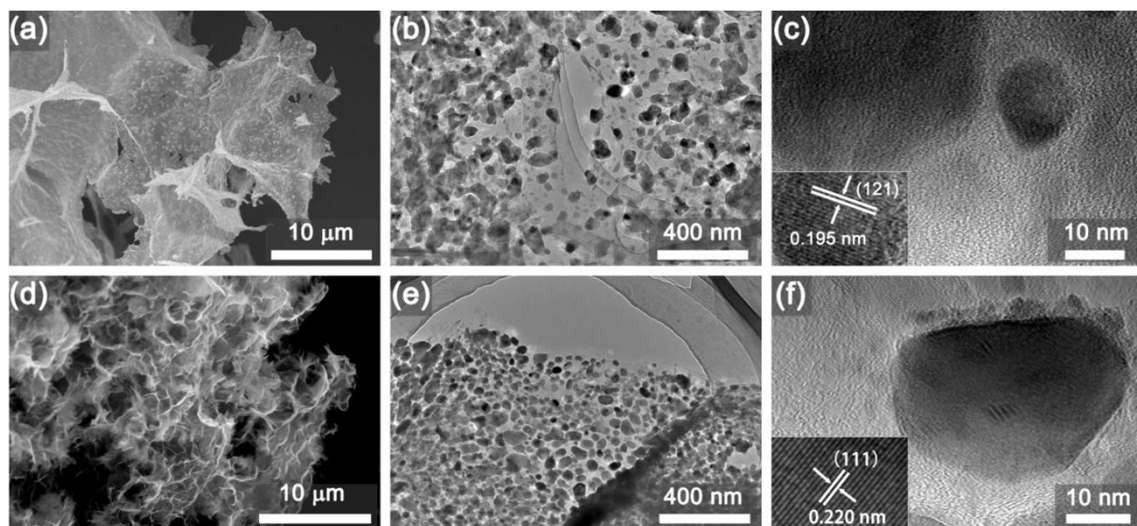


Figure S5. SEM images of (a) FeP/rGO and (d) Ni₂P/rGO nanocomposites. TEM images of (b, c) FeP/rGO and (e, f) Ni₂P/rGO

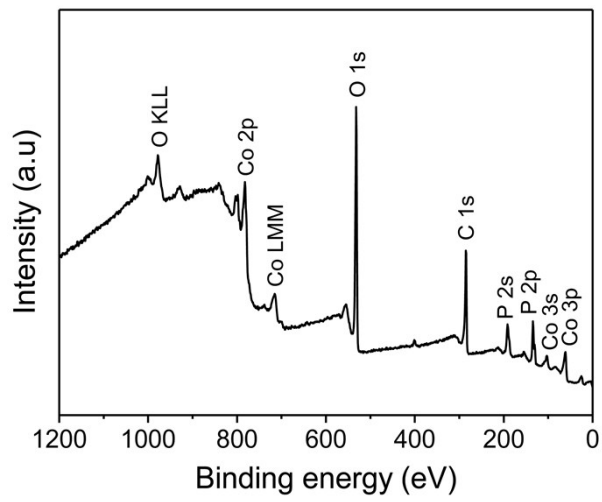


Figure S6. (a) XPS survey spectrum of the CoP/rGO nanocomposite.

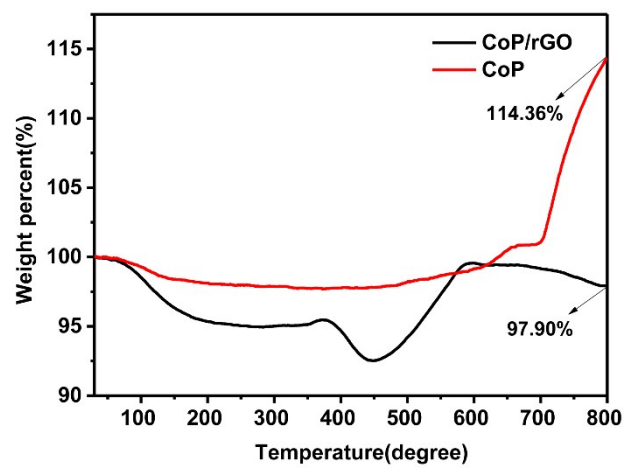


Figure S7. TGA plots for the CoP/rGO and pure CoP measured in air.

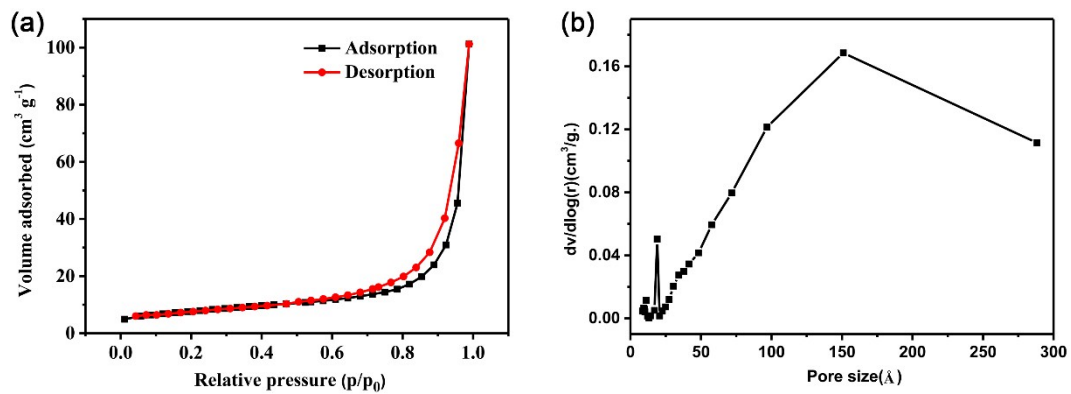


Figure S8. (a) N₂ absorption/desorption curve and (b) pore size distribution for the CoP/rGO nanocomposite.

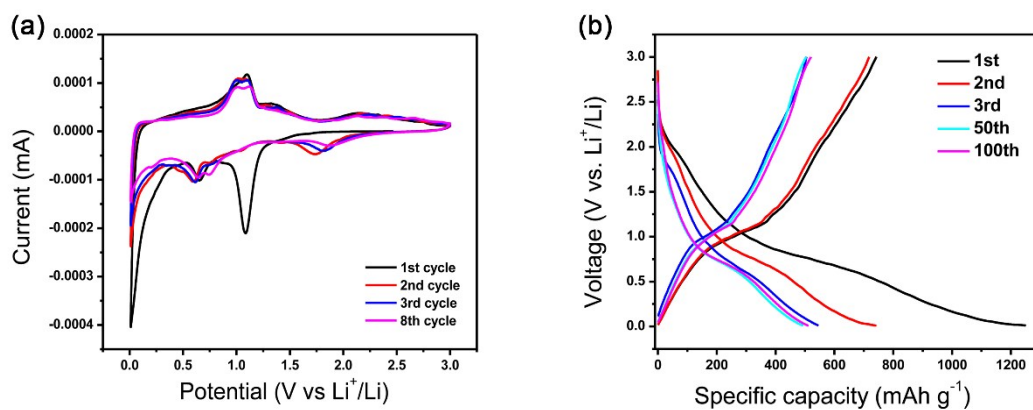


Figure S9. (a) CV curves at 0.1 mV s⁻¹ and (b) voltage profiles of pristine CoP.

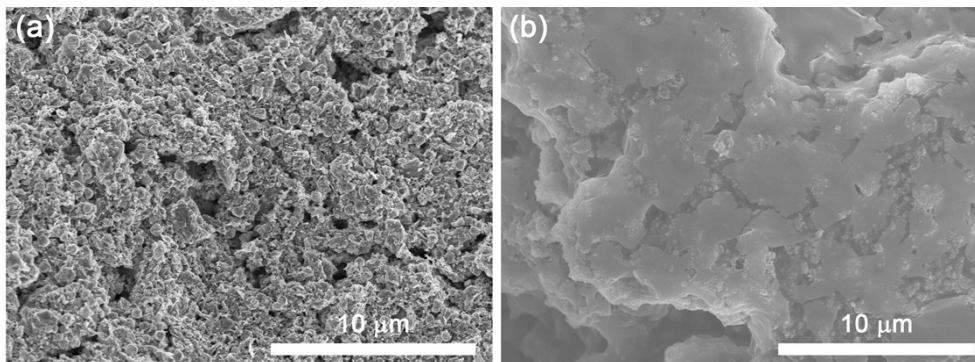


Figure S10. SEM images of the CoP/rGO electrode (a) before and (b) after 500 cycles.