

Investigation of Rhodium Catalyzed Hydroboration with NHC-Boranes: Role of the Alkene Coordination and Origin of the Enantioselectivity

SUPPORTING INFORMATION

*Paola Nava, * Momar Toure, Amel Abdou Mohamed, Jean-Luc Parrain and Olivier Chuzel**

Aix Marseille Univ, CNRS, Centrale Marseille, iSm2, Marseille, France.

***Paola Nava: e-mail: paola.nava@univ-amu.fr**

***Olivier Chuzel: e-mail: olivier.chuzel@univ-amu.fr**

Summary

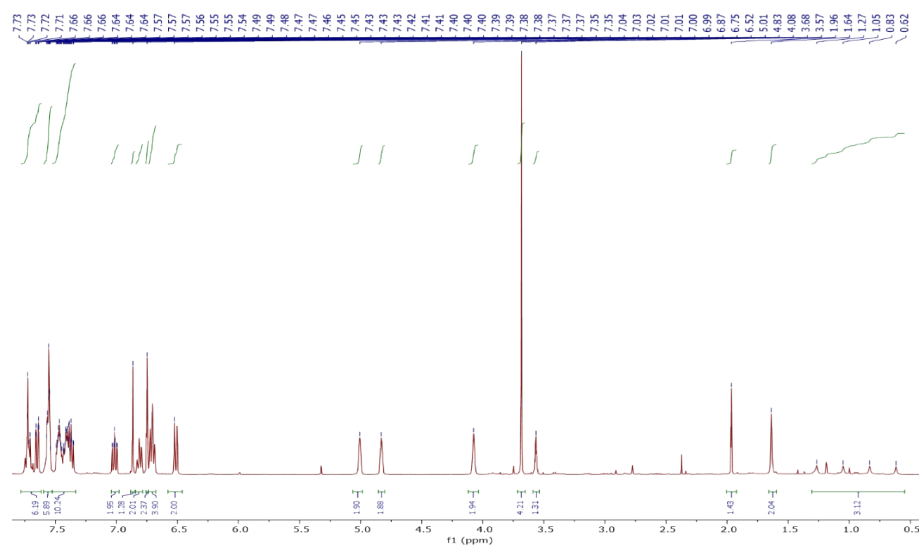
1- Experimental procedures	2
2- Comparison between computational methods	5
2.1. Model system	7
2.2. Real system	9
3. Mechanism through the [Rh]-B migratory step	10
4. Substitution of the <i>R</i> product	12
4.1. Alkene approach	12
4.2. BH ₃ Approach	12
5. Energies and xyz coordinates	13

1- Experimental procedures

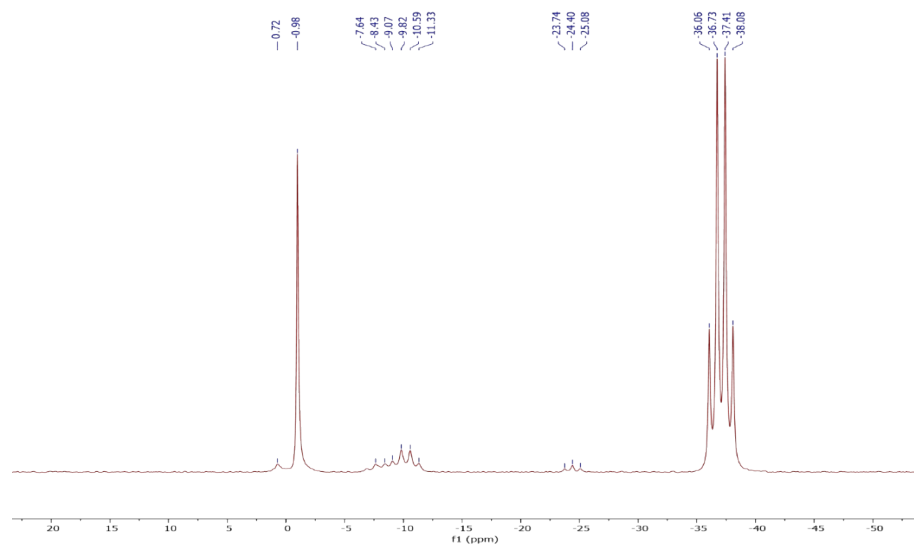


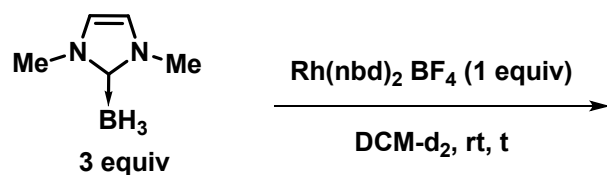
NHC-borane **3** (0.109 mmol, 1 equiv), $[\text{Rh}(\text{nbd})_2]\text{BF}_4$ (0.109 mmol, 1 equiv) and (*S*)-Binap (0.109 mmol, 1 equiv) were added in 10 mL Schlenk flask under argon and dissolved in dry and degas deuterated dichloromethane (0.87 mL) at room temperature.

^1H NMR (400 MHz, CD_2Cl_2)



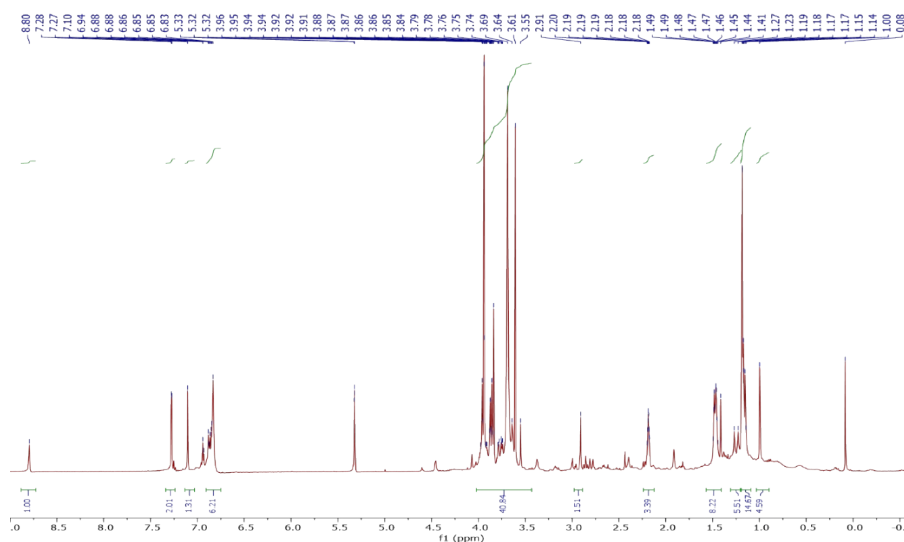
^{11}B NMR (128 MHz, CD_2Cl_2)



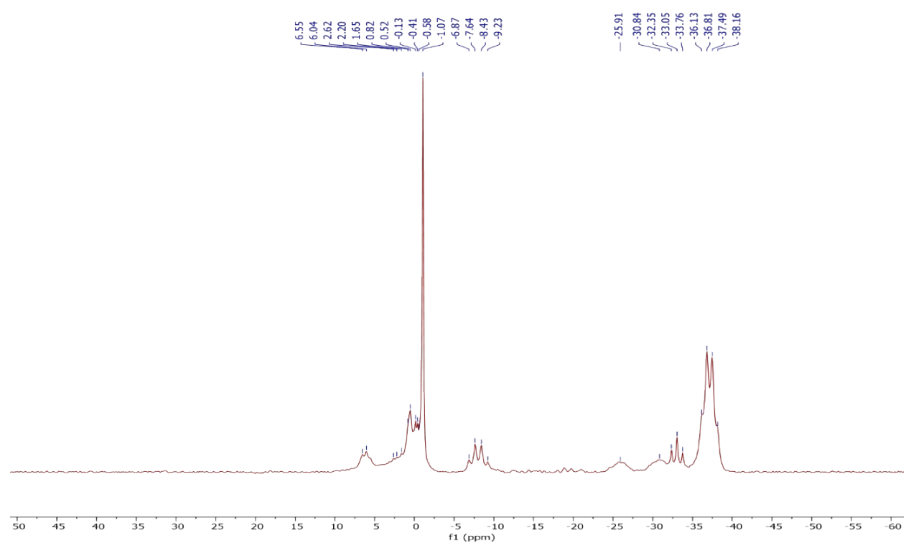


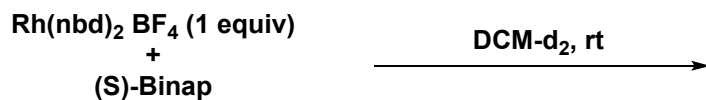
NHC-borane **3** (0.109 mmol, 3 equiv) and $[\text{Rh}(\text{nbd})_2]\text{BF}_4$ (0.636 mmol, 1 equiv) were added in 10 mL Schlenk flask under argon and dissolved in dry and degas deuterated dichloromethane (0.87 mL) at room temperature.

^1H NMR (400 MHz, CD_2Cl_2)



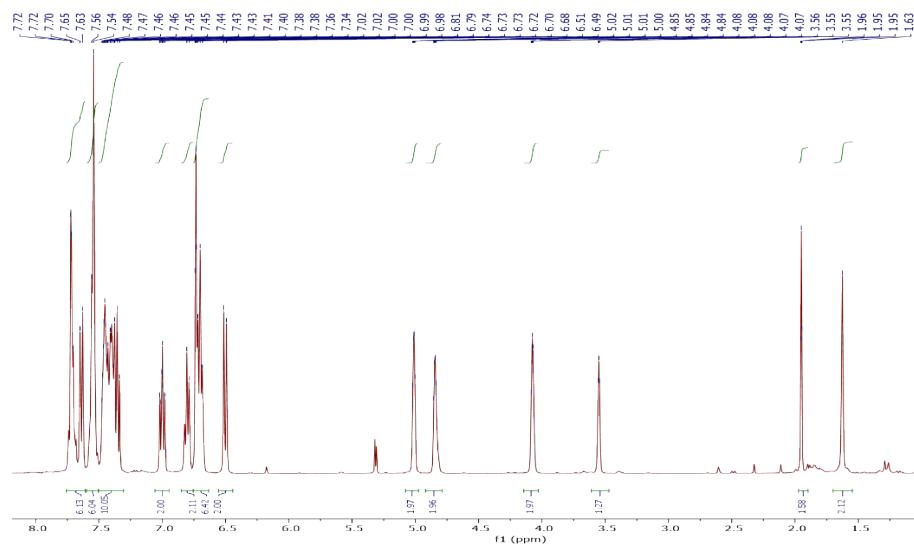
^{11}B NMR (128 MHz, CD_2Cl_2)





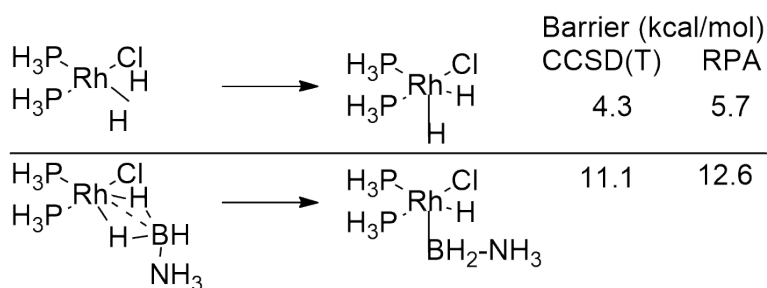
[Rh(nbd)₂]BF₄ (0.109 mmol, 1 equiv) and (S)-Binap (0.109 mmol, 1 equiv) were added in 10 mL Schlenk flask under argon and dissolved dry and degas deuterated dichloromethane (0.87 mL) at room temperature.

¹H NMR (400 MHz, CD₂Cl₂)



2- Comparison between computational methods

The RPA method includes dispersion effects in a non-empirical way and it does accurately take into account the interaction between the bulky ligand and the substrate, which is crucial for the enantioselectivity in our case. It is important, however, that this method reproduces correctly energies of the transition states. We cannot afford to do accurate CCSD(T) calculations on the real system. We have performed some CCSD(T) calculations (def2-QZVP basis set) on transition states for the hydride formation with a Wilkinson-type catalyst and H₂ or BH₃-NH₃ (Scheme S1).



Scheme S1. Hydride formation with a Wilkinson-type catalyst.

The RPA calculations underestimate the energy barrier (electronic energy) by only 1.5 kcal/mol. The fact that this underestimation is small and systematic in the two cases, suggests that the error is the same for the pro-R and pro-S paths and it does not affect the comparison.

As DFT calculations were already employed for mechanistic studies of this kind, the comparison with several DFT functionals and B2PLYP allows us to check that there is not a major bias in the use of RPA for the other steps.

Structures discussed in the main article are optimized at the PBE-D3 level by using a def2-SVP basis set. Energies are obtained as single point calculations at the RPA (Random-Phase-Approximation) level (PBE functional) with a def2-QZVP basis set. Since RPA calculations are not routinely used for computations of mechanistic profiles yet, some preliminary calculations have been performed to check for accuracy. Two sets of calculations have been performed: a) the reaction profile has been computed for a model system: the (S)-MeO-xylyl-BIPHEP ligand was replaced by a simpler ligand L (the 4 aryl groups on the P atoms were replaced by H atoms) and the methyl group on the NHC was replaced by a hydrogen atom; b) the real system has been computed at the B2PLYP (basis set def2-TZVP) method as well (see the article for labels).

2.1. Model system

Table S1. Electronic energies (relative to the isolated [LRhNBD]⁺ and the modified **1** systems, kcal/mol) for the hydroboration reaction in the model system. Energies barriers are also reported. Labels as in the article.

	BP86	PBE	BP86-D3	PBE-D3	PBE0	B3LYP	M06	B2PLYP	RPA
II	-3.95	-4.32	-6.64	-5.70	-3.83	-2.82	-4.6	-2.98	-3.95
Ts_{II-III}	8.42	8.47	4.94	6.60	10.60	10.95	9.4	8.92	7.61
III	6.50	6.27	1.25	3.46	8.43	9.48	8.0	5.23	3.29
Ts_{III-IV}	9.19	8.72	4.20	6.09	10.30	12.86	10.8	8.45	6.51
IV	4.33	3.80	-0.69	1.13	4.50	6.61	3.7	3.11	1.50
Ts_{IV-VI}	15.47	15.28	14.17	14.47	15.48	16.96	14.2	17.36	15.59
VI	-12.20	-12.12	-11.09	-11.59	-15.13	-14.03	-12.8	-10.43	-8.15
Computed barriers									
II to III	12.37	12.79	11.58	12.3	14.43	13.77	14.00	11.9	11.56
III to IV	2.69	2.45	2.95	2.63	1.87	3.38	1.87	3.22	3.22
IV to VI	11.14	14.86	14.86	13.34	10.98	10.35	10.98	14.25	14.09

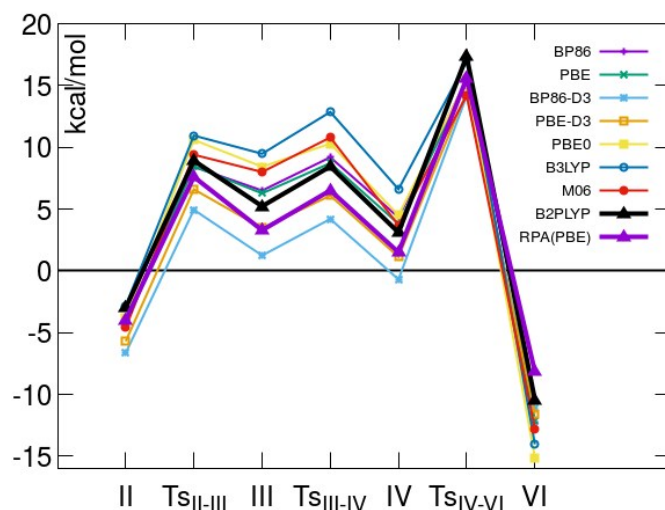


Figure S1 Energetic profiles for the reaction in the model systems, *via* the [Rh]-H migratory insertion mechanism. Comparison of several methods. See the article for labels (Figure 1). Energies are relative to isolated [LRhNBD]⁺ and the modified **1** systems.

In the model system we computed only the mechanism through the [Rh]-H migratory insertion step. For DFT calculations, structures were re-optimized at each functional (basis set: def2-SVP), for B2PLYP (def2-TZVP) and RPA (def2-QZVP), single point energy calculations are performed on the PBE-D3 structures. Electronic energies, reported in Table S1 and depicted in Figure S.1 are related to the isolated [LRhNBD]⁺ and the modified **1** systems. The conformational change from intermediates **C** to **D** is not necessary. The transition state **Ts_{CE}** corresponds to the reductive elimination.

The main result here is that all methods perform very similarly, since the curves are almost parallel. The methods that contain the semi-empirical dispersion factors are the lowest curves. This might be due to an overestimation of the stabilization of intermediate **A**, which is obtained by substitution of the NBD by the substrate. Table S1 reports as well the barriers between the intermediates. Interestingly, the RPA and the B2PLYP methods provide the same barrier heights. Furthermore, we notice that for this model system, where the L ligand has not the same steric hindrance than the real one, the highest energy is computed for the transition state responsible for the reductive elimination. The methods that do not contain dispersion corrections, tend to slightly underestimate the barrier of the reductive elimination step, thus overestimating the steric decompression that this event causes.

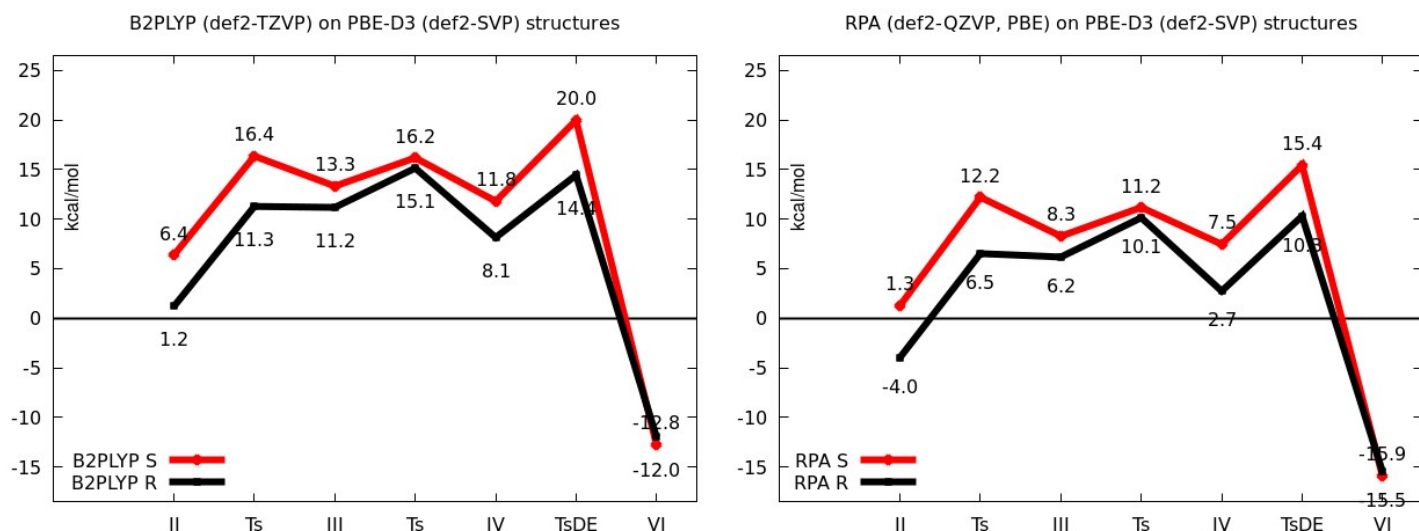


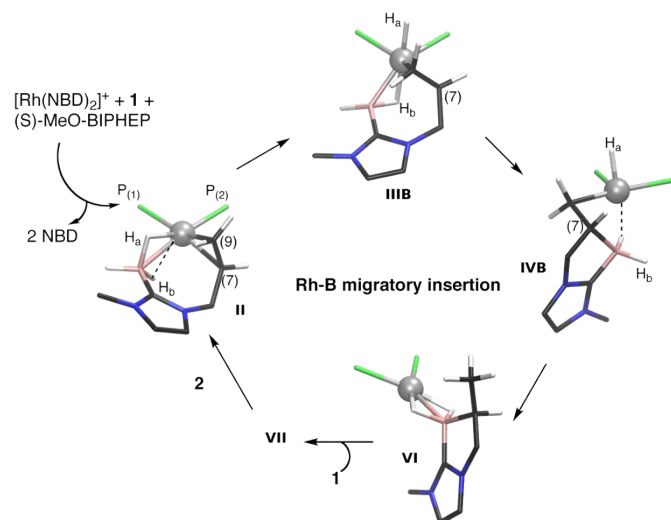
Fig. S2 Comparison between the computed energetic profiles at the B2PLYP and RPA methods for the real system, *via* the [Rh]-H migratory insertion mechanism. Energies are relative to isolated [LRhNBD]⁺ and the modified **1** systems.

2.2. Real system

We compare now the B2PLYP and RPA pro-*R* and pro-*S* computed energetic pathway for the real system, *via* the [Rh]-H migratory insertion step (structures are obtained at the PBE-D3 level, by employing the def2-SVP basis set. Single point calculations at the B2PLYP and RPA levels are performed with a def2-TZVP basis set, Figure S2). Here again we notice that the RPA and the B2PLYP curves are parallel. The deviation from the two methods is due to the position of our zero for the energy (isolated [LRhNBD]⁺ and substrate), which causes (only) a shift between the two methods.

3. Mechanism through the [Rh]-B migratory step

Besides the mechanism *via* the [Rh]-H migratory insertion, another pathway could be invoked, *via* a [Rh]-B migratory insertion step, instead of through the Rh-H migratory insertion into the alkene moiety (Scheme S2). From **I**, after a first transition state, a hydride structure **III_B** results. The B-C bond is then formed (**IV_B**) and the reductive elimination leads to the final product **VI**, coordinated to the metal.



Scheme S2. Schematic representation of the Rh catalyzed hydroboration reaction *via* a [Rh]-B migratory insertion mechanism.

This mechanism is computed to be possible for the pro-*S* profile, as shown in Figure S3. The pro-*S* [Rh]-H vs. [Rh]-B migration insertion mechanism profiles are energetically almost equivalent and they possibly coexist (Figure S3). In Figure S4, the structures of **III_S**, **III_{BS}**, **III_R** and **III_{BR}** are compared. In the **III_{BS}** intermediate, the H_a-Rh bond is orthogonal to the P(1)-P(2)-Rh plane. The -BH₂ fragment also moves from this plane, so that a further interaction is formed between H_b and the metal center that contributes to stabilize the complex. A structure results, where the H_a, the Rh and the H_b atoms are collinear.

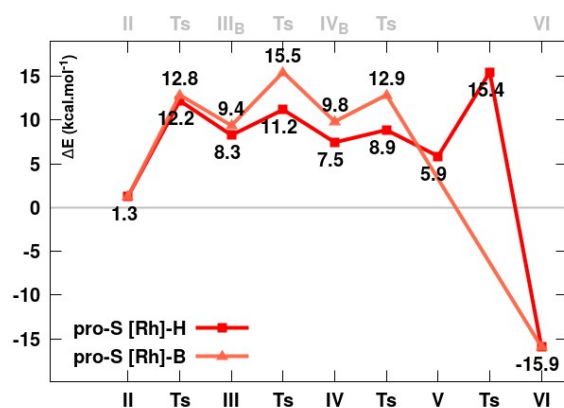


Figure S3. Comparison between the pro-*S* mechanisms, *via* either the [Rh]-H migratory insertion mechanism (red) or the [Rh]-B migratory insertion mechanism (pink). Labels are as in Figure 1 (main article, [Rh]-H migratory insertion mechanism, on the x axis) and Scheme S2 ([Rh]-B migratory insertion mechanism, on the opposite x axis). Energies (electronic energies, ZPE corrected) are related to the isolated [(L)Rh-NBD]⁺ (L=*S*-MeO-xylyl-BIPHEP) complex and substrate **1**.

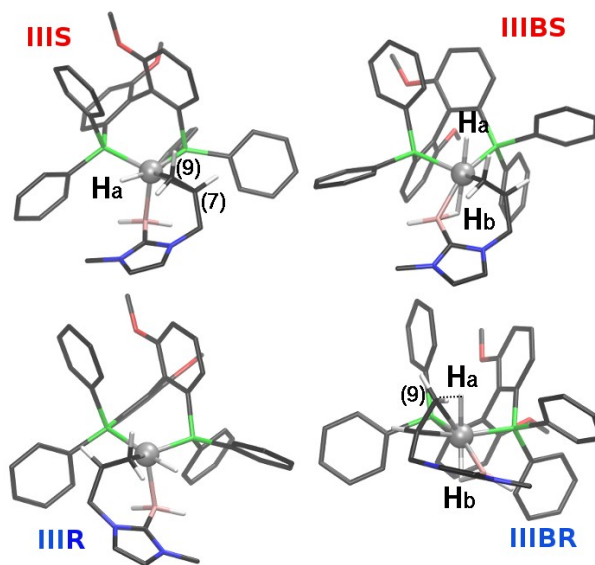


Figure S4. Computed structures of intermediates **III_S**, **III_{BS}**, **III_R** and **III_{BR}** (PBE-D3/def2-SVP level).

We could not optimize structures for the pro-*R* [Rh]-B migratory insertion mechanism. Indeed, any attempt to obtain a valid **III_{BR}** intermediate lead us to either **III_R** or to the structure presented in Figure S4. The latter is higher in energy than all the transition states of the pro-*R* [Rh]-H migratory insertion mechanism; furthermore, the hydride H_a is very close to the C(9) atom (121 pm), which would indeed favor the [Rh]-H than the [Rh]-B migratory insertion.

4. Substitution of the *R* product

4.1. Alkene approach

We report here (Figure S5) results obtained for the substitution of the final *R* product by prior coordination of the alkene moiety of the new substrate, which is intrinsically enantioselective and is possible for the pro-*S* approach, while the pro-*R* implies a large approaching barrier (18.7 kcal/mol). The first transition state corresponds to the approach of the alkene moiety to the metal center. Some conformational changes take place, for which the transition states have not been searched. The second transition state determines the final expulsion of the product.

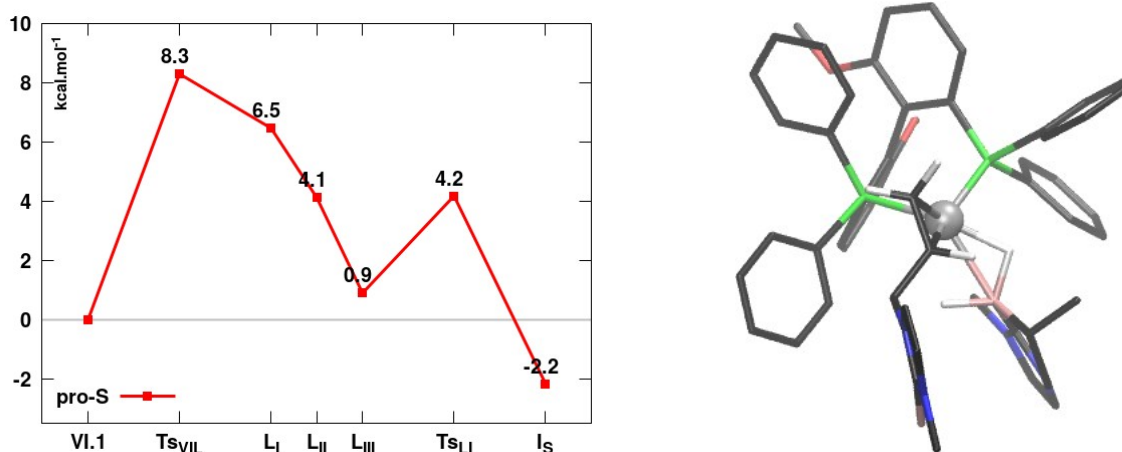


Fig. S5 Computed pathway (electronic energies corrected by the ZPE) for the substitution of the final *R* product by a new substrate, pro-*S* approach. The **L_I** structure is also depicted.

4.2. BH₃ Approach

The last step of the BH₃ approach is the removal of the product and the coordination of the alkene moiety. The structures of the corresponding transition states are shown in the main article. The **TS_{VII-IS}** has a closer structure to the intermediate **VIIc** concerning the orientation of the NHC group, while in **TS_{VII-IR}**, the NHC fragment needs to undergo a rotation about the C-B bond to reach the best conformation for the alkene approach to the metal center. This is revealed by the values of the Rh-B-C-N dihedral angles, which are of 78° and of 63° for **VIIc** and **TS_{VII-IS}**, respectively, while its value is of 3.5° for **TS_{VII-IR}**.

5. Energies and xyz coordinates

Energies. Total energies and ZPE (in a.u.) for computed structures at the optimizing level (def2-TZVP/PBE-D3) and at the def2-QZVP/RPA(PBE) level are reported. Cartesian coordinates of all intermediates and transition states at the optimizing level follow. See the article for labels, R for pro-R structures, S for pro-S structures.

	PBE-D3 (a.u.)	ZPE (a.u.)	Chemical Potential (kJ/mol)	RPA (a.u.)
0	-2817.819224300	0.7671902	1762.09	-2820.1290840594
TS_{0-IR}	-2817.809595906	0.7667683	1763.22	-2820.1179360517
TS_{0-IIR}	-2817.816094756	0.7671041	1764.29	-2820.1267263527
I_R	-2817.840231936	0.7691105	1781.02	-2820.1502164133
TS_{I-IIR}	-2817.826371612	0.7690246	1782.34	-2820.1358488962
II_R	-2817.834022961	0.7686395	1775.37	-2820.1430670865
TS_{II-IIR}	-2817.814902887	0.767174	1773.8	-2820.1244815121
III_R	-2817.814997231	0.7675123	1767.39	-2820.1254425507
TS_{III-IVR}	-2817.80776245	0.7659951	1769.3	-2820.1173665672
IV_R	-2817.822143244	0.7690815	1776.16	-2820.1324004661
TS_{IV-VR}	-2817.821604328	0.7685437	1776.08	-2820.130212813
V_R	-2817.828048253	0.7699276	1779.18	-2820.1388822925
TS_{V-VIR}	-2817.81167643	0.7682014	1772.5	-2820.1197375168
VI_R	-2817.853890877	0.7703957	1773.28	-2820.1631096595
III_{BR}	-2817.806229631	0.7672569	1775.48	-2820.1145148406
TS_{0-IS}	-2817.813326731	0.767274	1771.95	-2820.1229271136
TS_{0-IIS}	-2817.806689203	0.7669511	1765.14	-2820.1154432734
I_S	-2817.830160454	0.7686507	1778.67	-2820.1379558464
TS_{I-IIS}	-2817.81366756	0.7677426	1773.05	-2820.1207952961
II_S	-2817.825872054	0.7688716	1777.86	-2820.1351529934
TS_{II-IIS}	-2817.80662667	0.7662998	1769.67	-2820.1147686169
III_S	-2817.812577848	0.767413	1774.06	-2820.1213648723
TS_{III-IVS}	-2817.807631559	0.7659254	1771.86	-2820.1153692449
IV_S	-2817.816724416	0.7694001	1778.04	-2820.1251895569
TS_{IV-VS}	-2817.815582085	0.7695491	1782.04	-2820.1231045517

V_S	-2817.818912203	0.7694912	1773.76	-2820.1277841884
T_{S_V_VIS}	-2817.803423396	0.7685371	1771.49	-2820.1116805098
V_{I_S}	-2817.854979644	0.7702485	1769.98	-2820.1637318762
VIR.1	-3226.384437318	0.9592599	2216.68	-3229.3490145167
VIIa	-3226.385457261	0.9587476	2223.54	-3229.3480557458
VIIb	-3226.386176385	0.9605426	2230.07	-3229.353969072
VIIc	-3226.392656199	0.9602854	2234.06	-3229.3613724941
T_{S_{VII}_IS}	-3226.367425658	0.95909	2224.29	-3229.3324844031
T_{S_{VII}_IR}	-3226.365402536	0.9581649	2216.17	-3229.3287989484

XYZ Coordinates

0.xyz

98

Energy = -2817.819224300

Rh	-1.5938724	-0.1452963	-0.3693164
P	-0.3316567	-1.4524822	0.8909634
P	0.1853009	0.6200425	-1.4343583
C	-0.4314179	1.5149098	-2.9203558
C	-0.0511416	2.8297486	-3.2284605
C	-1.4013190	0.8823239	-3.7208812
C	-0.6207370	3.4921907	-4.3193238
H	0.6851864	3.3480234	-2.6144082
C	-1.9547555	1.5402185	-4.8174836
H	-1.7378388	-0.1250777	-3.4661240
C	-1.5672496	2.8498384	-5.1183394
H	-0.3197757	4.5171395	-4.5421709
H	-2.6992569	1.0326793	-5.4328540
H	-2.0083083	3.3690405	-5.9706166
C	1.2972599	-0.7133910	-2.0302731
C	2.1158364	-1.3805097	-1.0962954
C	1.1997144	-1.1764687	-3.3509665
C	2.8028868	-2.5468797	-1.5138379
C	1.8968663	-2.3168477	-3.7406896
H	0.5858132	-0.6446576	-4.0759221
C	2.6853202	-3.0152293	-2.8286736
H	1.8222839	-2.6724347	-4.7695023
H	3.2118677	-3.9132150	-3.1469113
C	1.2947435	1.8310965	-0.6194204
C	2.5062549	2.2094784	-1.2205410
C	0.9147774	2.4183710	0.5946655
C	3.3132591	3.1748795	-0.6184473
H	2.8236925	1.7369875	-2.1520359
C	1.7285735	3.3775633	1.1998612
H	-0.0145522	2.0924312	1.0695754
C	2.9259565	3.7609350	0.5907327
H	4.2509814	3.4684721	-1.0936219
H	1.4318001	3.8202713	2.1521933
H	3.5624402	4.5117898	1.0617490
C	-0.1459389	-3.1691584	0.2863590
C	0.7596995	-4.0529918	0.8951481
C	-0.9154182	-3.6031384	-0.8026605
C	0.8821962	-5.3594106	0.4216808
H	1.3809233	-3.7139930	1.7261274
C	-0.7809030	-4.9074902	-1.2794381
H	-1.6025467	-2.8996165	-1.2799088
C	0.1159396	-5.7865938	-0.6670495
H	1.5842591	-6.0443477	0.9004661
H	-1.3747053	-5.2369530	-2.1333894
H	0.2194144	-6.8073221	-1.0391640
C	-1.2008009	-1.5756612	2.5066901
C	-1.5184545	-0.3819968	3.1815651

C	-1.6006890	-2.7991577	3.0613412
C	-2.1872473	-0.4167029	4.4041663
H	-1.2384366	0.5768199	2.7386602
C	-2.2926359	-2.8284659	4.2761304
H	-1.3738895	-3.7328146	2.5454319
C	-2.5785166	-1.6421598	4.9542158
H	-2.4083390	0.5162221	4.9264144
H	-2.6015753	-3.7869351	4.6962751
H	-3.1065893	-1.6711066	5.9086957
C	1.3857993	-0.9615161	1.3236830
C	1.7115183	-0.5610198	2.6290887
C	2.3493540	-0.8966708	0.2976954
C	2.9861425	-0.0789196	2.9137282
H	0.9754164	-0.6347830	3.4270726
C	3.6313089	-0.3787603	0.6073059
C	3.9454690	0.0288908	1.9098059
H	3.2369258	0.2224320	3.9320137
H	4.9321975	0.4237261	2.1452565
O	4.4934429	-0.2908475	-0.4396356
O	3.5500008	-3.1586835	-0.5573091
C	5.8047040	0.2166264	-0.1931954
H	6.3167886	0.1938072	-1.1612502
H	5.7686043	1.2537886	0.1790304
H	6.3512021	-0.4149379	0.5257454
C	4.2463185	-4.3544789	-0.9078101
H	4.7657599	-4.6710791	0.0032689
H	3.5461827	-5.1447842	-1.2244589
H	4.9846665	-4.1710451	-1.7051413
C	-4.3774478	2.3900564	2.7526196
C	-3.7439119	3.3334448	1.9974966
C	-3.8864965	1.4544676	0.7654576
N	-4.4646970	1.2488501	1.9767282
H	-4.7807520	2.4393251	3.7567897
H	-3.4808964	4.3608535	2.2158381
N	-3.4625146	2.7466797	0.7759941
C	-2.7345185	3.3884034	-0.3383092
H	-3.2296830	3.0738762	-1.2690346
H	-1.7140198	2.9789168	-0.3600272
C	-2.7087955	4.8812306	-0.2360115
H	-3.6752230	5.3947198	-0.2736985
C	-1.5751594	5.5826873	-0.1605129
H	-0.6010780	5.0871997	-0.1295529
H	-1.5804038	6.6730418	-0.1409727
C	-5.0732739	-0.0147663	2.3764802
B	-3.7366972	0.3541187	-0.3704202
H	-4.7900189	0.0462125	-0.8849731
H	-2.9422673	0.7313077	-1.3055930
H	-3.2675521	-0.7530652	0.1320764
H	-4.3044286	-0.7942913	2.4545326
H	-5.5541202	0.1166944	3.3511384
H	-5.8225263	-0.3146754	1.6333930

IR.xyz				H	1.8937737	2.1012330	1.9562865
98				C	0.9727362	5.6223739	0.6158785
Energy = -2817.840231936				H	-0.4779935	4.6245731	-0.6221767
Rh	1.4572895	0.2791632	-0.5586963	C	1.9592102	5.4879302	1.5926254
P	-0.1964442	1.6867258	-0.0076347	H	3.0557623	4.1011758	2.8398042
P	-0.0379773	-1.4874953	-0.5390375	H	0.7284625	6.6074122	0.2151591
C	0.6420543	-2.7014145	-1.7384680	H	2.4866993	6.3676251	1.9645065
C	0.9133081	-4.0330412	-1.3980448	C	-1.2284085	1.0243488	1.3668020
C	0.9855621	-2.2422775	-3.0233357	C	-0.9733734	1.4081016	2.6925906
C	1.5046664	-4.8914151	-2.3295020	C	-2.2133982	0.0554710	1.0822296
H	0.6733174	-4.4040813	-0.4017302	C	-1.6835822	0.8231666	3.7374453
C	1.5611571	-3.1045729	-3.9543901	H	-0.2378483	2.1790956	2.9118058
H	0.8043303	-1.1980291	-3.2872052	C	-2.9137284	-0.5336894	2.1652671
C	1.8245287	-4.4337442	-3.6080131	C	-2.6448117	-0.1523845	3.4856656
H	1.7140376	-5.9251860	-2.0497315	H	-1.4867184	1.1322044	4.7652238
H	1.8109961	-2.7377323	-4.9514428	H	-3.1823800	-0.6085149	4.3149988
H	2.2821973	-5.1081503	-4.3334031	O	-3.8247164	-1.4809366	1.8253107
C	-1.7486172	-1.1437076	-1.1201494	O	-4.6170501	0.7623830	0.0482404
C	-2.5896955	-0.3686387	-0.2981681	C	-4.5494258	-2.1286373	2.8703295
C	-2.1905803	-1.5776496	-2.3788692	H	-5.2103407	-2.8448120	2.3700207
C	-3.8751157	-0.0191725	-0.7796603	H	-3.8703929	-2.6698751	3.5492348
C	-3.4651286	-1.2353756	-2.8240907	H	-5.1558910	-1.4094792	3.4443577
H	-1.5481364	-2.1952629	-3.0040984	C	-5.9248920	1.1427840	-0.3771410
C	-4.3082847	-0.4519926	-2.0391230	H	-6.3333214	1.7547641	0.4344762
H	-3.8090934	-1.5832949	-3.7994906	H	-5.8853280	1.7402157	-1.3028711
H	-5.2961386	-0.1833935	-2.4089680	H	-6.5687137	0.2619048	-0.5321698
C	-0.3583710	-2.4582676	0.9892436	C	6.7481622	0.1799625	0.8938857
C	-1.3440461	-3.4601061	0.9803677	C	6.3875516	0.9659275	-0.1609175
C	0.3494353	-2.2034059	2.1701410	C	4.6376001	-0.3648033	0.3242131
C	-1.5978907	-4.2064317	2.1307943	N	5.6641212	-0.6355497	1.1728460
H	-1.9238325	-3.6470195	0.0746073	H	7.6704530	0.1312052	1.4603274
C	0.0828606	-2.9419158	3.3240435	H	6.9403846	1.7251469	-0.7013777
H	1.0996065	-1.4138444	2.1869943	N	5.0920364	0.6192760	-0.4914919
C	-0.8860976	-3.9475893	3.3058637	C	4.3126163	1.1540843	-1.6179376
H	-2.3611166	-4.9863466	2.1114290	H	4.1792077	0.3485710	-2.3565309
H	0.6307258	-2.7263810	4.2429357	H	4.9454801	1.9282457	-2.0802847
H	-1.0897816	-4.5282459	4.2073165	C	2.9768111	1.7330472	-1.2240515
C	-1.4438349	2.2791534	-1.2153707	H	3.0331004	2.5841742	-0.5391822
C	-2.4922301	3.1019889	-0.7690321	C	1.9025799	1.6827542	-2.1444237
C	-1.3792222	1.9202411	-2.5678038	H	2.0136193	1.1222666	-3.0789195
C	-3.4403985	3.5802211	-1.6729062	H	1.2237661	2.5333781	-2.2201086
H	-2.5750638	3.3569042	0.2891168	C	5.6138627	-1.6050045	2.2606885
C	-2.3369940	2.3897697	-3.4666044	B	3.1922690	-0.9951729	0.2867569
H	-0.5939227	1.2424649	-2.9032844	H	3.1381118	-2.1408900	0.6675854
C	-3.3633512	3.2270215	-3.0231468	H	2.4231503	-0.2674350	1.0095989
H	-4.2465979	4.2248568	-1.3186519	H	2.7866676	-0.9832576	-0.9345122
H	-2.2862707	2.0926066	-4.5151003	H	4.8076233	-2.3172398	2.0585604
H	-4.1083361	3.5990103	-3.7284630	H	6.5706020	-2.1375846	2.3184820
C	0.5886603	3.2225875	0.6393381	H	5.4195158	-1.0980551	3.2157968
C	1.6086316	3.0940612	1.6021919				
C	0.2884956	4.4989797	0.1422667				
C	2.2770875	4.2179447	2.0840630				

IIR.xyz					
98					
Energy = -2817.834022961					
Rh	-1.3790477	0.6106062	-0.0366178		
H	-3.4229413	-1.5247073	-1.3304781		
B	-3.3310921	-0.3750701	-0.9738112		
H	-2.7315526	-0.4813373	0.1810673		
H	-2.7114717	0.3452133	-1.7671916		
C	-4.6912251	0.2633903	-0.5064283		
C	-6.1600609	1.7694918	0.2978193		
C	-6.7529552	0.5413458	0.3528177		
H	-6.5292923	2.7486783	0.5782589		
H	-7.7379151	0.2458509	0.6937530		
N	-4.8970632	1.5766626	-0.2298991		
N	-5.8371673	-0.3692190	-0.1432273		
C	-3.9046559	2.6195025	-0.4881017		
H	-3.7114473	2.6516728	-1.5715963		
H	-4.3831401	3.5751526	-0.2191364		
C	-2.6014137	2.4855919	0.2671979		
H	-1.9566715	3.3401980	0.0558448		
C	-2.3953242	1.8000107	1.4724199		
H	-3.1898907	1.1849167	1.9044096		
H	-1.6711905	2.1852941	2.1902702		
C	-6.0325423	-1.8157150	-0.2050027		
H	-5.8444137	-2.1752032	-1.2228167		
H	-5.3404435	-2.3197703	0.4828599		
H	-7.0657509	-2.0410751	0.0795043		
P	0.5967201	1.7386950	-0.0753291		
P	-0.2852243	-1.4190567	0.1298711		
C	1.8183143	0.9160349	-1.1919707		
C	2.4858854	-0.2448510	-0.7514358		
C	2.0095516	1.3815058	-2.5028167		
C	3.3270804	-0.9323967	-1.6620741		
C	2.8443446	0.6917843	-3.3775020		
H	1.5251325	2.2946031	-2.8409615		
C	3.4981108	-0.4686477	-2.9717661		
H	2.9903944	1.0652328	-4.3922769		
H	4.1406266	-1.0008646	-3.6708167		
C	1.2490701	-1.4226172	1.1431134		
C	2.3953143	-0.7792284	0.6383313		
C	1.2581484	-1.9748809	2.4334998		
C	3.5420428	-0.6852136	1.4644651		
C	2.4005354	-1.8789734	3.2238622		
H	0.3809832	-2.4925569	2.8171331		
C	3.5403653	-1.2299778	2.7543877		
H	2.4051548	-2.3172899	4.2231690		
H	4.4201261	-1.1539945	3.3908719		
C	0.2028764	-2.2989494	-1.4005001		
C	1.0305081	-3.4325290	-1.3439303		
C	-0.2635357	-1.8442985	-2.6411891		
C	1.3757383	-4.1042968	-2.5164580		
H	1.4161183	-3.7797218	-0.3836909		
C	0.0943206	-2.5121156	-3.8132027		
H	-0.9051307	-0.9625278	-2.6849375		
C	0.9121538	-3.6429483	-3.7523764		
H	2.0135376	-4.9885748	-2.4651617		
H	-0.2653184	-2.1469402	-4.7764284		
H	1.1890027	-4.1666064	-4.6690098		
C	-1.4214269	-2.5854765	0.9936710		
C	-2.0328998	-2.1594312	2.1871229		
C	-1.7855640	-3.8235586	0.4504191		
C	-2.9720115	-2.9631590	2.8307442		
H	-1.7791263	-1.1812812	2.6019227		
C	-2.7397622	-4.6218365	1.0897659		
H	-1.3392530	-4.1650435	-0.4835088		
C	-3.3325489	-4.1978995	2.2795018		
H	-3.4276269	-2.6239882	3.7628479		
H	-3.0169541	-5.5819242	0.6511184		
H	-4.0717135	-4.8263964	2.7790890		
C	0.3460145	3.4045199	-0.8255968		
C	0.7699854	4.5967245	-0.2237614		
C	-0.4035172	3.4769963	-2.0165628		
C	0.4737361	5.8310702	-0.8116846		
H	1.3252610	4.5717374	0.7136822		
C	-0.6848735	4.7067609	-2.6077138		
H	-0.7872914	2.5588628	-2.4685973		
C	-0.2438610	5.8903224	-2.0059758		
H	0.8086198	6.7498402	-0.3275413		
H	-1.2551772	4.7430089	-3.5375808		
H	-0.4680353	6.8546699	-2.4644241		
C	1.5570989	2.0542387	1.4527163		
C	1.0386430	1.6863473	2.7011663		
C	2.8241338	2.6578874	1.3820644		
C	1.7636325	1.9368910	3.8666825		
H	0.0836473	1.1612368	2.7462284		
C	3.5417531	2.9159492	2.5496001		
H	3.2558203	2.9103892	0.4118398		
C	3.0110937	2.5605971	3.7934983		
H	1.3576032	1.6346324	4.8331828		
H	4.5235413	3.3886164	2.4867987		
H	3.5750682	2.7633117	4.7055074		
O	3.9196660	-2.0543587	-1.1760500		
O	4.6003443	-0.0279653	0.9216515		
C	4.7842350	-2.7895414	-2.0416104		
H	5.1466765	-3.6353277	-1.4471197		
H	4.2397889	-3.1671029	-2.9225719		
H	5.6402925	-2.1771656	-2.3681939		
C	5.7916429	0.0881830	1.6987845		
H	6.2078567	-0.9019715	1.9456046		
H	6.5020578	0.6360829	1.0701458		
H	5.6091513	0.6552717	2.6263514		

IIIR.xyz

98

Energy = -2817.814997231

Rh -1.3758120 0.4220249 0.6346224
H -2.2991446 0.8703910 -1.7969673
H -2.5633329 -0.4889008 1.1022825
B -2.8858701 0.1773150 -0.9888745
H -3.0578438 -0.9732220 -1.3192397
C -6.3245719 1.3274854 0.1213883
C -5.5877159 2.4595319 0.3242477
H -7.3778906 1.1309196 0.2819201
H -5.8725672 3.4303240 0.7121927
C -4.2037238 0.8790048 -0.4988227
N -4.2977756 2.1679950 -0.0687787
N -5.4592766 0.3685293 -0.3731698
C -2.1692721 2.4817065 1.1437303
C -2.5403846 1.5376921 2.1023960
H -3.5704421 1.1907687 2.1800754
H -1.9584689 1.4420225 3.0232553
H -1.3205329 3.1403089 1.3369671
P -0.5130716 -1.6580491 0.2423198
P 0.5851947 1.6074462 -0.1660288
C 0.9917249 -1.6132690 1.3074882
C 2.1480902 -0.9332757 0.8623313
C 0.9142431 -2.0898245 2.6267891
C 3.2025585 -0.7267501 1.7880026
C 1.9693755 -1.8831973 3.5105564
H 0.0345399 -2.6377843 2.9595088
C 3.1085242 -1.1916208 3.1058477
H 1.9048493 -2.2651914 4.5306565
H 3.9210384 -1.0269094 3.8113132
C 1.8459454 0.6753039 -1.1219763
C 2.2405391 1.0871019 -2.4041375
C 2.3986378 -0.4839947 -0.5439508
C 3.1671814 0.3390167 -3.1239643
H 1.8347862 1.9984848 -2.8385099
C 3.3394852 -1.2283192 -1.2983681
C 3.7122658 -0.8238190 -2.5853273
H 3.4707421 0.6648294 -4.1200750
H 4.4281032 -1.4042693 -3.1644425
C -3.1247105 3.0227057 0.1005096
H -3.4847755 4.0217005 0.3917782
H -2.6195738 3.1265856 -0.8711896
C -5.8391968 -0.9961437 -0.7260606
H -5.9971597 -1.0842751 -1.8087893
H -5.0407786 -1.6828950 -0.4248095
H -6.7654683 -1.2504699 -0.1990918
C 0.0726524 -2.2725029 -1.3781981
C 0.9065397 -3.4032404 -1.4241137
C -0.3295810 -1.6604623 -2.5716843
C 1.3201518 -3.9171187 -2.6522549
H 1.2447289 -3.8711865 -0.4979027

C 0.0989207 -2.1715918 -3.7980972
H -0.9786992 -0.7858331 -2.5366882
C 0.9186940 -3.3011939 -3.8412908
H 1.9610134 -4.8001674 -2.6801944
H -0.2114053 -1.6848502 -4.7240241
H 1.2470239 -3.7019463 -4.8017001
C -1.5823967 -3.0300480 0.8635755
C -2.2714398 -2.8664341 2.0794433
C -1.7842062 -4.2105788 0.1343931
C -3.1076853 -3.8689776 2.5678233
H -2.1654785 -1.9361124 2.6401769
C -2.6395045 -5.2063548 0.6158802
H -1.2886518 -4.3573053 -0.8241794
C -3.2958409 -5.0448615 1.8354689
H -3.6212777 -3.7268663 3.5202160
H -2.7903441 -6.1125856 0.0270765
H -3.9579056 -5.8262617 2.2118069
C 0.1420079 3.0476061 -1.2092518
C 0.2501251 4.3657672 -0.7375702
C -0.4770699 2.8231709 -2.4537271
C -0.2416454 5.4324816 -1.4945184
H 0.7250234 4.5649626 0.2240239
C -0.9556098 3.8922374 -3.2117996
H -0.5897057 1.8064782 -2.8312111
C -0.8428265 5.2006620 -2.7331554
H -0.1446665 6.4508203 -1.1143813
H -1.4236800 3.6995771 -4.1785171
H -1.2194311 6.0357916 -3.3255809
C 1.5977917 2.3079450 1.1968884
C 2.8023375 2.9766531 0.9229782
C 1.1974318 2.1375789 2.5286737
C 3.5726907 3.4895409 1.9655888
H 3.1408637 3.0866738 -0.1090824
C 1.9744632 2.6423496 3.5732831
H 0.2869578 1.5774397 2.7511636
C 3.1591306 3.3255103 3.2919543
H 4.5041886 4.0129705 1.7435197
H 1.6569104 2.4950429 4.6066333
H 3.7656764 3.7258425 4.1061095
O 4.2787667 -0.0536867 1.3030392
O 3.8231242 -2.3440394 -0.6888370
C 5.3709750 0.2047535 2.1848825
H 6.1070316 0.7536467 1.5874784
H 5.0564441 0.8278760 3.0376781
H 5.8215831 -0.7315093 2.5522073
C 4.7987564 -3.1210890 -1.3825573
H 5.0506041 -3.9481660 -0.7098722
H 4.3931607 -3.5248155 -2.3247763
H 5.7048179 -2.5306069 -1.5944015

IVR.xyz					
98					
Energy = -2817.822143244					
Rh	-1.0698878	-0.8045117	1.0044425	C	1.4864442 -2.7364385 -3.5032001
H	-1.7773939	-1.1508419	-1.7239414	H	-0.1310424 -2.2713760 -2.1479928
H	-1.5494330	-2.4697611	1.9772614	C	2.8701983 -2.8266720 -3.6673908
B	-2.1598960	-1.6163203	-0.6635198	H	4.8015931 -2.5946334 -2.7202411
H	-1.8371618	-2.7914176	-0.5298804	H	0.8207584 -2.9724199 -4.3351779
C	-5.8934421	-1.7346400	-1.2085742	H	3.2888505 -3.1378535 -4.6260745
C	-5.8890260	-1.1162241	0.0051476	C	1.4578013 -3.0252006 1.4818194
H	-6.7135449	-2.0466894	-1.8443404	C	1.0814405 -2.9823779 2.8379215
H	-6.7043210	-0.7641576	0.6253966	C	2.0025213 -4.2127636 0.9735649
C	-3.7411579	-1.4822652	-0.5701229	C	1.2659442 -4.0873798 3.6670526
N	-4.5639602	-0.9759952	0.3814541	H	0.6462754 -2.0693023 3.2535797
N	-4.5705498	-1.9512501	-1.5455564	C	2.1725093 -5.3252794 1.8027120
C	-2.7929492	-0.6276770	2.1238526	H	2.2917279 -4.2763141 -0.0754479
C	-2.5219099	-2.0795575	2.4547605	C	1.8107291 -5.2661948 3.1487420
H	-3.2736307	-2.7743089	2.0551060	H	0.9812928 -4.0300733 4.7190223
H	-2.3514220	-2.2774192	3.5223086	H	2.5936215 -6.2431348 1.3892208
H	-2.5736942	0.0507567	2.9633693	H	1.9486109 -6.1354568 3.7933944
P	1.1023655	-1.5578532	0.4259548	C	-0.1456091 2.3830752 1.4111544
P	-0.8457638	1.2304028	0.1675962	C	0.2502342 3.6746666 1.0273165
C	2.2673096	-0.2503335	1.0026068	C	-0.0292406 1.9984936 2.7538803
C	2.3359561	0.9458547	0.2590675	C	0.7421028 4.5663848 1.9797100
C	2.9896123	-0.3840947	2.1976408	H	0.1798981 3.9785535 -0.0184662
C	3.1490498	1.9985399	0.7465921	C	0.4796413 2.8867887 3.7019703
C	3.7741240	0.6691042	2.6613472	H	-0.3254203 0.9914657 3.0559773
H	2.9551034	-1.3170611	2.7577187	C	0.8611885 4.1737206 3.3163545
C	3.8538069	1.8634381	1.9492625	H	1.0383437 5.5717210 1.6754500
H	4.3378213	0.5577157	3.5890256	H	0.5800781 2.5729093 4.7418880
H	4.4679763	2.6785906	2.3275095	H	1.2520118 4.8722405 4.0579825
C	0.3012289	1.3848850	-1.2634527	C	-2.4286519 2.0484469 -0.3132189
C	-0.1944011	1.6541175	-2.5487252	C	-2.9421333 3.1150100 0.4438330
C	1.6792892	1.1402949	-1.0710593	C	-3.2161932 1.5314080 -1.3592348
C	0.6609150	1.6524915	-3.6466110	C	-4.1986561 3.6544782 0.1554350
H	-1.2450525	1.8905663	-2.6956173	H	-2.3648267 3.5286472 1.2701292
C	2.5300081	1.1550100	-2.2060890	C	-4.4658991 2.0782470 -1.6498203
C	2.0188329	1.3912696	-3.4876949	H	-2.8553286 0.6830615 -1.9393927
H	0.2653702	1.8615825	-4.6417407	C	-4.9641182 3.1414058 -0.8922997
H	2.6742320	1.3849640	-4.3567092	H	-4.5758829 4.4838185 0.7559322
C	-4.1531342	-0.2535067	1.5945292	H	-5.0559544 1.6655371 -2.4701319
H	-4.9435263	-0.4508613	2.3408185	H	-5.9430273 3.5669095 -1.1181767
H	-4.1776569	0.8240018	1.3703998	O	3.8439791 0.9202670 -1.9530799
C	-4.0999969	-2.6124643	-2.7559187	O	3.1752314 3.1215724 -0.0203476
H	-3.4980093	-1.9169189	-3.3551631	C	4.0098343 4.2016197 0.3948860
H	-3.4756824	-3.4752265	-2.4907167	H	3.8920567 4.9771956 -0.3698393
H	-4.9657669	-2.9475555	-3.3367384	H	3.6929381 4.6004381 1.3726380
C	1.7951293	-2.0303996	-1.2050517	H	5.0668610 3.8943341 0.4465465
C	3.1872059	-2.1180115	-1.3749274	C	4.7549428 0.9238351 -3.0514324
C	0.9476990	-2.3455545	-2.2754892	H	5.7401890 0.7208339 -2.6176193
C	3.7192794	-2.5211781	-2.5992949	H	4.5060661 0.1340389 -3.7789601
H	3.8547639	-1.8612309	-0.5507031	H	4.7713601 1.9034483 -3.5560989

VR.xyz					
98					
Energy = -2817.828048253					
Rh	-1.3342153	-0.1985650	0.7520498		
H	-2.6184471	-1.7688119	-1.2638597		
H	-2.5002141	-0.1969011	3.5168143		
B	-2.8402072	-0.9815146	-0.3733348		
H	-2.6624891	-1.4900340	0.8132754		
C	-6.3098120	0.2629873	-1.2014420		
C	-5.9143265	1.2176218	-0.3066621		
H	-7.2432764	0.1357609	-1.7374049		
H	-6.4284289	2.0971422	0.0627192		
C	-4.2165224	-0.2344693	-0.5314898		
N	-4.6389775	0.8960917	0.0925739		
N	-5.2576907	-0.6141618	-1.3347379		
C	-2.7320549	1.0831163	1.7482575		
C	-3.2965222	0.2776867	2.9227681		
H	-3.9681987	-0.5270877	2.5874009		
H	-3.8690216	0.9216996	3.6174365		
H	-2.1299494	1.9156354	2.1515903		
P	0.2939586	-1.8277417	0.3184919		
P	-0.1011295	1.5005526	-0.0025684		
C	1.7857165	-1.1972710	1.2006191		
C	2.5297966	-0.1542107	0.6090136		
C	2.0856085	-1.6292965	2.5017902		
C	3.5780333	0.4386879	1.3536470		
C	3.1173765	-1.0255930	3.2169620		
H	1.5233080	-2.4472756	2.9501202		
C	3.8622474	0.0098528	2.6566128		
H	3.3497853	-1.3691133	4.2263419		
H	4.6621953	0.4729964	3.2315182		
C	1.2274368	1.0996091	-1.2095927		
C	1.1369381	1.5427371	-2.5389834		
C	2.3206316	0.3123136	-0.7944186		
C	2.1236457	1.1989443	-3.4585190		
H	0.3066478	2.1702635	-2.8557793		
C	3.3106513	-0.0252015	-1.7507855		
C	3.2071021	0.4121280	-3.0769029		
H	2.0494227	1.5494923	-4.4891225		
H	3.9650959	0.1435490	-3.8104685		
C	-3.8232695	1.7758804	0.9613982		
H	-4.5527516	2.2618234	1.6354468		
H	-3.4068086	2.5560456	0.3113574		
C	-5.3130750	-1.8301767	-2.1419140		
H	-4.2960570	-2.1306915	-2.4091418		
H	-5.7896505	-2.6417721	-1.5759346		
H	-5.8933127	-1.6281075	-3.0496805		
C	-0.1710232	-3.3862207	1.1781603		
C	0.0299838	-4.6619013	0.6316901		
C	-0.8278231	-3.2793375	2.4182457		
C	-0.4004400	-5.8011114	1.3172030		
H	0.5147885	-4.7736553	-0.3379306		
C	-1.2438748	-4.4173371	3.1072862		
H	-1.0216702	-2.2917007	2.8449154		
C	-1.0307693	-5.6842801	2.5566716		
H	-0.2398364	-6.7859845	0.8754379		
H	-1.7435190	-4.3140000	4.0719315		
H	-1.3625059	-6.5764576	3.0900129		
C	0.9279067	-2.3806034	-1.3079716		
C	2.1142899	-3.1258274	-1.4097554		
C	0.2081127	-2.0678029	-2.4690818		
C	2.5608942	-3.5633059	-2.6566665		
H	2.6965557	-3.3484838	-0.5137443		
C	0.6641747	-2.4973984	-3.7161694		
H	-0.7031538	-1.4739227	-2.3868192		
C	1.8375527	-3.2492474	-3.8113081		
H	3.4792915	-4.1490179	-2.7275597		
H	0.1048452	-2.2405402	-4.6172945		
H	2.1911007	-3.5892899	-4.7861816		
C	0.7944214	2.4543013	1.2825492		
C	1.7086686	3.4571729	0.9194713		
C	0.5977029	2.1619077	2.6401578		
C	2.3880406	4.1747330	1.9036657		
H	1.8994638	3.6659836	-0.1348850		
C	1.2915855	2.8700811	3.6219878		
H	-0.0832465	1.3601681	2.9309520		
C	2.1805809	3.8830175	3.2552373		
H	3.0908497	4.9575451	1.6133696		
H	1.1406153	2.6264113	4.6745767		
H	2.7175178	4.4426391	4.0230217		
C	-1.1690480	2.7134137	-0.8756414		
C	-1.2672177	4.0566264	-0.4886820		
C	-2.0006777	2.2367646	-1.9061180		
C	-2.1833303	4.9061217	-1.1180789		
H	-0.6406225	4.4425405	0.3157488		
C	-2.9004664	3.0895379	-2.5420391		
H	-1.9518702	1.1833462	-2.1907328		
C	-2.9988583	4.4278542	-2.1442290		
H	-2.2564197	5.9474923	-0.8005977		
H	-3.5342892	2.7081766	-3.3446537		
H	-3.7102929	5.0942049	-2.6344092		
O	4.2528772	1.4357543	0.7216631		
O	4.3254301	-0.8019828	-1.2904477		
C	5.3634832	-1.1653674	-2.2002285		
H	6.0637594	-1.7759430	-1.6199419		
H	4.9681821	-1.7591532	-3.0406393		
H	5.8860503	-0.2759925	-2.5881781		
C	5.3268512	2.0689049	1.4156796		
H	5.7236233	2.8197101	0.7234805		
H	4.9714023	2.5684028	2.3318560		
H	6.1211634	1.3484317	1.6695510		

```

VIR.xyz
98
Energy = -2817.853890877
Rh -1.2749607 -0.0330045 0.3523878
H -2.6223247 1.0612463 0.8089547
H -3.7686594 -2.0689801 2.7383297
B -3.4274166 0.0195069 0.7917429
H -2.7617345 -1.0752382 0.5623751
C -6.1306700 0.6969585 -1.8217308
C -6.7032144 0.9310350 -0.5972727
H -6.5478886 0.7695278 -2.8197828
H -7.7037406 1.2562837 -0.3376969
C -4.5815898 0.2806393 -0.2654144
N -5.7290758 0.6592241 0.3351525
N -4.8218615 0.3006901 -1.5950654
C -4.3501830 -0.0468157 2.1512889
C -4.6833767 -1.5011298 2.5212117
H -5.1914373 -2.0200044 1.6921426
H -5.3390527 -1.5583947 3.4041520
H -3.8550417 0.4373753 3.0052436
P 0.2754962 -1.6154205 0.1076421
P 0.2373003 1.5652994 0.0669683
C 1.8630370 -1.2834506 0.9760306
C 2.7406963 -0.3147052 0.4484653
C 2.1345307 -1.8885967 2.2124984
C 3.8800267 0.0493502 1.2077068
C 3.2676000 -1.5228793 2.9338489
H 1.4673790 -2.6521237 2.6084674
C 4.1372975 -0.5497213 2.4469794
H 3.4773360 -2.0003828 3.8922911
H 5.0118672 -0.2663576 3.0297716
C 1.5582947 1.2703458 -1.1757747
C 1.4954755 1.8817575 -2.4376224
C 2.5624794 0.3235876 -0.8904125
C 2.4204448 1.5446804 -3.4219556
H 0.7334830 2.6305154 -2.6473924
C 3.4828472 -0.0130136 -1.9136694
C 3.4073318 0.5932509 -3.1739685
H 2.3732358 2.0279240 -4.3991787
H 4.1153776 0.3322385 -3.9584800
C -5.6377955 0.7421524 1.8059145
H -6.5517334 0.3214670 2.2505545
H -5.5677026 1.8033431 2.0882098
C -3.8474394 -0.0774426 -2.6109045
H -3.7434969 0.7275474 -3.3496780
H -2.8861600 -0.2415562 -2.1027770
H -4.1599266 -1.0016532 -3.1143408
O 4.6653458 1.0136765 0.6578157
O 4.4015119 -0.9590383 -1.5851124
C 5.8288506 1.4245903 1.3745392
H 6.3008733 2.1948516 0.7548386
H 5.5634894 1.8539970 2.3546612
H 6.5307969 0.5867082 1.5156148
C 5.3594287 -1.3405762 -2.5715783
H 5.9884130 -2.0999243 -2.0942017
H 4.8686432 -1.7749879 -3.4580572
H 5.9845447 -0.4856640 -2.8764727
C -0.6688937 3.0529065 -0.5274421
C -0.5479058 4.3123071 0.0750619
C -1.5749796 2.8913191 -1.5908421
C -1.3136934 5.3885456 -0.3830607
H 0.1374577 4.4569310 0.9104812
C -2.3275078 3.9683907 -2.0542628
H -1.6855504 1.9052852 -2.0471689
C -2.2003565 5.2222944 -1.4476106
H -1.2134076 6.3626949 0.0982855
H -3.0180006 3.8321401 -2.8891039
H -2.7933272 6.0661785 -1.8036858
C 1.1375376 2.1265958 1.5577182
C 2.2369747 2.9939439 1.4536949
C 0.7085964 1.6977168 2.8215124
C 2.8899475 3.4318536 2.6059601
H 2.5927123 3.3107192 0.4716288
C 1.3726652 2.1287559 3.9705739
H -0.1379400 1.0090382 2.8863672
C 2.4613435 2.9979333 3.8641251
H 3.7406810 4.1103535 2.5205719
H 1.0422479 1.7825928 4.9511549
H 2.9784676 3.3374154 4.7631985
C -0.3962268 -3.1430966 0.8797768
C -0.4021404 -4.3895452 0.2383186
C -0.9822226 -3.0286076 2.1540938
C -0.9713143 -5.5012703 0.8657123
H 0.0302474 -4.4977320 -0.7564330
C -1.5348223 -4.1427975 2.7830472
H -1.0112973 -2.0524233 2.6450093
C -1.5322078 -5.3834756 2.1381196
H -0.9735311 -6.4648275 0.3535269
H -1.9753674 -4.0419198 3.7765206
H -1.9718669 -6.2548740 2.6258570
C 0.7969312 -2.1262403 -1.5727608
C 1.8830308 -2.9977554 -1.7549974
C 0.0993274 -1.6513679 -2.6907347
C 2.2496866 -3.3972637 -3.0402087
H 2.4519546 -3.3491407 -0.8922629
C 0.4768370 -2.0411691 -3.9760253
H -0.7231353 -0.9495308 -2.5350875
C 1.5494449 -2.9188828 -4.1517756
H 3.0904886 -4.0801047 -3.1746197
H -0.0612070 -1.6546813 -4.8432209
H 1.8433706 -3.2279138 -5.1562733

```

IIIB.xyz

98

Energy = -2817.806229631

Rh -1.3974641 0.8174852 -0.0302421
H -3.2134769 -1.0716494 -1.4571969
B -3.0849281 0.0070624 -0.9350211
H -2.1133635 0.7286448 -1.5990834
C -4.4130120 0.6868371 -0.5208843
C -5.9007856 2.1781586 0.2775156
C -6.5046681 0.9498530 0.2749011
H -6.2773678 3.1486057 0.5788638
H -7.4985240 0.6528204 0.5886719
N -4.6227320 2.0001760 -0.2004289
N -5.5898232 0.0522298 -0.2257447
C -3.6039634 3.0495358 -0.3101440
H -3.4244798 3.2657326 -1.3738625
H -4.0539788 3.9544711 0.1319260
C -2.2950664 2.7006962 0.3656343
H -1.5837370 3.5181852 0.2146149
C -2.3142062 2.0990820 1.7188000
H -3.3111485 1.8403722 2.1010095
H -1.7324333 2.6502413 2.4695545
C -5.8119850 -1.3855877 -0.3581902
H -5.4347206 -1.7256834 -1.3287698
H -5.2855050 -1.9295637 0.4378634
H -6.8876375 -1.5802082 -0.2905658
P 0.8140477 1.7349480 -0.1206066
P -0.6059575 -1.3624571 0.0986280
C 1.8957532 0.6972054 -1.1963311
C 2.3431247 -0.5519350 -0.7172212
C 2.1990920 1.0988145 -2.5064923
C 3.1028409 -1.3768648 -1.5839995
C 2.9381500 0.2656543 -3.3417842
H 1.8719437 2.0705174 -2.8721138
C 3.3896353 -0.9733498 -2.8931992
H 3.1719821 0.5874783 -4.3580142
H 3.9626199 -1.6150469 -3.5600202
C 0.8925598 -1.5263870 1.1598020
C 2.1257267 -1.0387811 0.6795031
C 0.7913560 -2.0309967 2.4657490
C 3.2493461 -1.0772876 1.5428748
C 1.9080722 -2.0484393 3.2974439
H -0.1544116 -2.4286184 2.8301437
C 3.1366429 -1.5697840 2.8486531
H 1.8234598 -2.4469288 4.3098904
H 3.9991898 -1.5866551 3.5123667
C -0.1437108 -2.2841576 -1.4181496
C 0.4884271 -3.5354042 -1.3203971
C -0.4189902 -1.7510246 -2.6839119
C 0.8168366 -4.2474764 -2.4737577
H 0.7397867 -3.9443991 -0.3400405
C -0.0770872 -2.4599194 -3.8362928

H -0.8807960 -0.7667885 -2.7626364
C 0.5339377 -3.7116412 -3.7336561
H 1.3039496 -5.2204912 -2.3877617
H -0.2825127 -2.0293720 -4.8176438
H 0.7934669 -4.2692060 -4.6352802
C -1.8823831 -2.4373879 0.8999298
C -2.5155196 -1.9665898 2.0648087
C -2.3212544 -3.6483366 0.3466588
C -3.5322490 -2.6984721 2.6769550
H -2.2094773 -1.0118590 2.4971373
C -3.3563525 -4.3725407 0.9473377
H -1.8661505 -4.0284669 -0.5676883
C -3.9604809 -3.9066283 2.1157458
H -3.9945622 -2.3233946 3.5919485
H -3.6852839 -5.3109915 0.4975068
H -4.7597127 -4.4796392 2.5887460
C 0.7771391 3.3870972 -0.9398452
C 1.4075162 4.5272211 -0.4212297
C -0.0152134 3.5246317 -2.0958706
C 1.2634280 5.7675753 -1.0514527
H 2.0103807 4.4565663 0.4841433
C -0.1414568 4.7572746 -2.7339748
H -0.5447524 2.6529596 -2.4879877
C 0.4978698 5.8862433 -2.2112434
H 1.7581462 6.6441777 -0.6297058
H -0.7458180 4.8393083 -3.6393712
H 0.3929572 6.8540706 -2.7040044
C 1.8747993 2.0037650 1.3568400
C 1.3302000 1.8551474 2.6389577
C 3.2280334 2.3590709 1.2267309
C 2.1128348 2.0723128 3.7740837
H 0.2945361 1.5304732 2.7461590
C 4.0068327 2.5884897 2.3608792
H 3.6750372 2.4424851 0.2344133
C 3.4507862 2.4478868 3.6362360
H 1.6801167 1.9391441 4.7669067
H 5.0555203 2.8699545 2.2486361
H 4.0627821 2.6266678 4.5220076
O 3.5034914 -2.5653294 -1.0566504
O 4.4066088 -0.5973971 1.0157690
C 4.3051874 -3.4238808 -1.8653527
H 4.5311585 -4.2940328 -1.2390660
H 3.7584443 -3.7525127 -2.7646634
H 5.2454918 -2.9321758 -2.1634184
C 5.5817093 -0.6341393 1.8232735
H 5.8368675 -1.6661282 2.1141854
H 6.3822735 -0.2228992 1.1984841
H 5.4663282 -0.0120085 2.7260918
H -1.7392842 1.0435847 1.7559872

```

IS.xyz
98
Energy = -2817.830160454
Rh 1.3990501 0.3592530 -0.6150974
P 0.1191050 -1.5258772 -0.5323370
P -0.3932215 1.5759877 -0.0446164
C 0.2850213 3.1225990 0.6968014
C -0.0361053 4.3958191 0.2033347
C 1.2438142 3.0176476 1.7228858
C 0.5751646 5.5365275 0.7324855
H -0.7647865 4.5041600 -0.6003134
C 1.8368229 4.1591038 2.2619349
H 1.5400188 2.0326069 2.0883532
C 1.5054461 5.4239578 1.7660735
H 0.3154773 6.5182385 0.3332098
H 2.5658405 4.0588562 3.0680965
H 1.9734532 6.3169113 2.1831559
C -1.4253013 0.8157163 1.2815414
C -2.3019389 -0.2348914 0.9412319
C -1.2929072 1.2184173 2.6195202
C -3.0122216 -0.8898235 1.9778505
C -2.0122581 0.5684352 3.6191537
H -0.6476121 2.0523497 2.8851905
C -2.8626357 -0.4902226 3.3117102
H -1.9089180 0.8916975 4.6561736
H -3.4072162 -0.9954462 4.1072618
C -1.6562990 2.1464926 -1.2454262
C -2.7662357 2.8773929 -0.7881740
C -1.5442913 1.8457747 -2.6082946
C -3.7289430 3.3257032 -1.6917727
H -2.8835484 3.0847990 0.2771709
C -2.5164988 2.2836623 -3.5079736
H -0.7105558 1.2340577 -2.9511298
C -3.6048287 3.0315700 -3.0530829
H -4.5841466 3.8988593 -1.3296736
H -2.4282461 2.0311178 -4.5656671
H -4.3616146 3.3798621 -3.7580202
C -0.1711620 -2.4848723 1.0046649
C -1.0638755 -3.5700098 0.9956856
C 0.4890143 -2.1437502 2.1914221
C -1.2774863 -4.3100496 2.1582129
H -1.6028623 -3.8266678 0.0818758
C 0.2622615 -2.8788335 3.3559857
H 1.1722185 -1.2950092 2.2000922
C -0.6170873 -3.9639478 3.3411082
H -1.9682090 -5.1549651 2.1418889
H 0.7719474 -2.6000291 4.2797510
H -0.7898802 -4.5406218 4.2515003
C 0.9976491 -2.6841005 -1.6554207
C 1.3786887 -2.2223994 -2.9293619
C 1.3777376 -3.9730363 -1.2577044
C 2.1020056 -3.0424341 -3.7933624
H 1.1101868 -1.2089866 -3.2360173
C 2.1128794 -4.7881071 -2.1228885
H 1.1094273 -4.3430014 -0.2682919
C 2.4724478 -4.3292962 -3.3907268
H 2.3825139 -2.6746535 -4.7817871
H 2.4039447 -5.7889927 -1.7998973
H 3.0435662 -4.9703225 -4.0641090
C -1.5763251 -1.3599501 -1.2240707
C -1.8827310 -1.8173390 -2.5145270
C -2.5453387 -0.6801284 -0.4608537
C -3.1487192 -1.5895831 -3.0489896
H -1.1420036 -2.3647983 -3.0947549
C -3.8198234 -0.4457593 -1.0314681
C -4.1172655 -0.8999533 -2.3226440
H -3.3871322 -1.9553661 -4.0490869
H -5.0967774 -0.7208712 -2.7622980
O -4.6899826 0.2496828 -0.2537406
O -3.8086136 -1.9157177 1.5821034
C -5.9895567 0.5240184 -0.7755901
H -6.5104209 1.0840639 0.0086720
H -5.9305277 1.1397491 -1.6881750
H -6.5409765 -0.4056669 -0.9900332
C -4.5375156 -2.6288169 2.5807521
H -5.0970905 -3.4010715 2.0418330
H -3.8572916 -3.1067189 3.3045784
H -5.2423887 -1.9687867 3.1117622
C 6.6843369 1.0228274 1.0409463
C 6.0663040 2.0452558 0.3850643
C 4.5964314 0.3373058 0.5199182
N 5.7743285 -0.0152516 1.1077719
H 7.6855375 0.9438755 1.4472260
H 6.4271019 3.0276323 0.1045582
N 4.7917698 1.6112940 0.0745835
C 3.8050851 2.4311587 -0.6539240
H 4.3965339 3.1628288 -1.2293100
H 3.1914827 2.9912300 0.0668207
C 2.9732736 1.5943516 -1.5768687
H 3.5605903 0.8774898 -2.1593869
C 1.7290497 1.9634750 -2.1044487
H 1.2699822 2.9145828 -1.8272818
H 1.4464738 1.5888317 -3.0887227
C 6.0406181 -1.3083771 1.7314601
B 3.2715826 -0.5265726 0.5016115
H 3.4017514 -1.5996507 1.0407088
H 2.3687822 0.1275384 1.0945099
H 2.8993972 -0.8036791 -0.6966276
H 5.7771814 -2.1174334 1.0415602
H 7.1076195 -1.3635598 1.9726592
H 5.4504574 -1.4193686 2.6495250

```

IIS.xyz				H	-2.9541609	-4.0101505	3.3156285
98				H	-3.1549756	-6.0772541	1.9315454
Energy = -2817.825872054				C	0.5877054	-2.1440820	-1.5537893
Rh	-1.4895445	0.3631707	-0.2013203	C	0.1622159	-1.5949836	-2.7704448
H	-2.8000566	-0.7094326	-0.9746922	C	1.5514038	-3.1658549	-1.5496425
H	-2.7848327	-0.5188914	1.0929283	C	0.6986663	-2.0580166	-3.9730002
B	-3.4704996	-0.8966294	0.1137283	H	-0.5804740	-0.7931529	-2.7597188
H	-3.6298949	-2.0907660	0.1489178	C	2.0759339	-3.6320739	-2.7541880
C	-6.9769543	0.5370901	-0.0694181	H	1.8983004	-3.5860494	-0.6042141
C	-6.2967887	1.5817448	0.4819939	C	1.6533706	-3.0772996	-3.9663628
H	-8.0250822	0.4294360	-0.3218531	H	0.3710894	-1.6205362	-4.9173348
H	-6.6373529	2.5587167	0.8033469	H	2.8192163	-4.4312585	-2.7465303
C	-4.8165354	-0.0847061	0.1191629	H	2.0697090	-3.4412896	-4.9071568
N	-4.9776091	1.1819467	0.5942348	C	0.1170284	3.3411749	-0.9642554
N	-6.0568543	-0.4740364	-0.2840161	C	0.1703334	4.5132462	-0.1932752
C	-2.7308312	2.1798723	0.1794192	C	-0.2305804	3.4561787	-2.3248460
C	-2.7734770	1.8675586	-1.1775187	C	-0.0872349	5.7602698	-0.7696569
H	-3.6466633	1.3747464	-1.6060528	H	0.4207804	4.4602922	0.8660821
H	-2.1572595	2.4152774	-1.8841078	C	-0.4722987	4.7025259	-2.9023427
H	-2.0418680	2.9562158	0.5226928	H	-0.3148321	2.5591133	-2.9419387
P	-0.1536500	-1.5677550	0.0147535	C	-0.3995062	5.8611279	-2.1253245
P	0.3818707	1.6686777	-0.2173642	H	-0.0361989	6.6573211	-0.1503762
C	1.2649695	-1.4063281	1.1835952	H	-0.7255605	4.7659065	-3.9618432
C	2.3657175	-0.6048121	0.8261807	H	-0.5916479	6.8364277	-2.5748472
C	1.2076413	-1.9851766	2.4618974	C	1.0198008	2.0814716	1.4578408
C	3.3764591	-0.3663841	1.7924841	C	0.2717418	1.7323219	2.5896273
C	2.2156812	-1.7448256	3.3899969	C	2.2336713	2.7695609	1.6177849
H	0.3897959	-2.6476095	2.7318253	C	0.7283512	2.0621532	3.8669260
C	3.2941879	-0.9236170	3.0726611	H	-0.6608934	1.1775926	2.4534742
H	2.1608064	-2.2052598	4.3776808	C	2.6810148	3.1098956	2.8937820
H	4.0685609	-0.7340372	3.8137111	H	2.8328577	3.0290563	0.7432349
C	1.8872589	1.0335282	-1.0888214	C	1.9315033	2.7546451	4.0200064
C	2.2821167	1.5601743	-2.3299017	H	0.1467616	1.7738063	4.7440596
C	2.5949954	-0.0533743	-0.5401244	H	3.6211979	3.6519924	3.0103893
C	3.3377941	0.9944274	-3.0370050	H	2.2875819	3.0173273	5.0175909
H	1.7901872	2.4361188	-2.7415849	O	4.2634978	-1.6974009	-0.7098658
C	3.6562153	-0.6262432	-1.2876694	O	4.3952480	0.4365429	1.3848827
C	4.0187622	-0.1114983	-2.5358228	C	5.3559559	-2.3045976	-1.3983474
H	3.6346662	1.4214766	-3.9962062	H	5.6899129	-3.1265103	-0.7556473
H	4.8318567	-0.5545575	-3.1078363	H	5.0395550	-2.7076148	-2.3745686
C	-3.8884961	1.9887749	1.1340041	H	6.1842010	-1.5923307	-1.5442730
H	-3.5457168	1.5413828	2.0803101	C	5.4548191	0.6991596	2.3036974
H	-4.3158064	2.9744057	1.3766550	H	6.1553597	1.3494231	1.7684304
C	-1.0856358	-3.0329692	0.6247048	H	5.0849961	1.2196450	3.2025022
C	-1.2236779	-4.1900994	-0.1548297	H	5.9688187	-0.2296600	2.5998982
C	-1.7391880	-2.9781976	1.8689450	C	-6.3666324	-1.7562639	-0.9054204
C	-1.9697806	-5.2754581	0.3122294	H	-6.4746031	-1.6362795	-1.9920183
H	-0.7535793	-4.2518263	-1.1355568	H	-5.5470881	-2.4510658	-0.6970847
C	-2.4646143	-4.0694437	2.3422197	H	-7.3008741	-2.1491073	-0.4863933
H	-1.7051526	-2.0648880	2.4639144				
C	-2.5813323	-5.2245479	1.5648493				
H	-2.0658472	-6.1667169	-0.3100174				

IIIS.xyz

98

Energy = -2817.812577848

Rh	-1.2998491	0.5539473	-0.6547013
H	-2.3755416	-0.5706951	-1.0208553
H	-2.2100393	2.2630944	1.3591146
B	-2.6299749	1.1679098	1.0501613
H	-2.5668487	0.3348180	1.9170103
C	-6.0738330	0.8925196	-0.5139156
C	-5.5462738	1.9637574	-1.1784457
H	-7.0403124	0.4109822	-0.6040139
H	-5.9594946	2.5827386	-1.9661770
C	-4.0097318	1.2552810	0.3152164
N	-4.2926020	2.1779366	-0.6473422
N	-5.1205047	0.4727236	0.3959594
C	-2.1148320	2.3648166	-1.7813599
C	-2.2978821	1.1687210	-2.4806200
H	-3.2923701	0.7409415	-2.6113620
H	-1.5639045	0.8702493	-3.2357934
H	-1.2690147	3.0112413	-2.0211664
P	-0.5506497	-1.4757712	0.1585175
P	0.6092847	1.8064215	-0.0442337
C	1.0800212	-1.5547046	1.0230735
C	2.1973775	-0.9380688	0.4235008
C	1.2224398	-2.2107275	2.2558016
C	3.4324339	-0.9442025	1.1131769
C	2.4531463	-2.2218536	2.9065183
H	0.3788805	-2.7283865	2.7063327
C	3.5573455	-1.5769038	2.3552965
H	2.5534047	-2.7368264	3.8631926
H	4.5065691	-1.5769640	2.8880187
C	1.5948160	0.8778756	-1.2810853
C	1.5455403	1.3041667	-2.6248926
C	2.1721870	-0.3650275	-0.9548304
C	2.1079723	0.5213029	-3.6267717
H	1.0667798	2.2488585	-2.8826177
C	2.7632920	-1.1319850	-1.9912625
C	2.7260178	-0.6906406	-3.3197819
H	2.0713960	0.8585103	-4.6639048
H	3.1641166	-1.2899380	-4.1158060
C	-3.2696090	3.0988762	-1.1327369
H	-2.9183357	3.7061076	-0.2875888
H	-3.7490035	3.7792453	-1.8541842
C	-1.7221162	-2.3912461	1.2361075
C	-2.5030391	-3.4282969	0.7031206
C	-1.9258796	-2.0087172	2.5737535
C	-3.4548077	-4.0776311	1.4926830
H	-2.3633263	-3.7388207	-0.3330434
C	-2.8697345	-2.6675165	3.3634810
H	-1.3400499	-1.1989442	3.0079595
C	-3.6381959	-3.7031391	2.8254567
H	-4.0456955	-4.8890202	1.0643129

H	-3.0045032	-2.3669078	4.4038325
H	-4.3726966	-4.2197952	3.4452538
C	-0.2557400	-2.6410357	-1.2391048
C	0.4927626	-3.8076413	-1.0072925
C	-0.7747882	-2.4068306	-2.5193189
C	0.7011024	-4.7254468	-2.0357238
H	0.9177580	-3.9965248	-0.0203918
C	-0.5521181	-3.3207808	-3.5518025
H	-1.3584697	-1.5053540	-2.7041416
C	0.1828948	-4.4828523	-3.3116841
H	1.2757980	-5.6324493	-1.8405708
H	-0.9568949	-3.1229226	-4.5456339
H	0.3515508	-5.2007246	-4.1162225
C	0.8114627	3.5916010	-0.4214827
C	-0.1255649	4.4565467	0.1693003
C	1.8775865	4.1373286	-1.1521849
C	-0.0099070	5.8377092	0.0167268
H	-0.9345449	4.0392356	0.7735959
C	1.9858616	5.5214341	-1.3088952
H	2.6302178	3.4858360	-1.5979698
C	1.0429457	6.3733134	-0.7304419
H	-0.7402519	6.4982958	0.4870443
H	2.8177402	5.9345785	-1.8817717
H	1.1330439	7.4535544	-0.8536650
C	1.4289771	1.7610016	1.5922287
C	2.7326745	2.2557781	1.7565090
C	0.7006634	1.3363905	2.7104121
C	3.3065755	2.2966575	3.0254499
H	3.3006407	2.6043952	0.8925409
C	1.2791037	1.3832792	3.9805426
H	-0.3226889	0.9809220	2.5798490
C	2.5817399	1.8590854	4.1392315
H	4.3204059	2.6817978	3.1490106
H	0.7075403	1.0508965	4.8486462
H	3.0314967	1.8991272	5.1325942
O	3.3301546	-2.3016302	-1.5995430
O	4.4455960	-0.2858323	0.4900097
C	5.7212951	-0.2546274	1.1314013
H	6.3746939	0.3156520	0.4623737
H	5.6638416	0.2516823	2.1089005
H	6.1284948	-1.2699896	1.2642453
C	3.9196735	-3.1358083	-2.5976009
H	4.3052989	-4.0089652	-2.0602655
H	3.1704222	-3.4633166	-3.3361675
H	4.7508368	-2.6234141	-3.1083217
C	-5.2762854	-0.6718314	1.2852720
H	-5.3469409	-1.5961256	0.6971266
H	-4.3981853	-0.7310200	1.9340723
H	-6.1808394	-0.5512883	1.8947540

IVS.xyz					
98					
Energy = -2817.816724416					
Rh	-1.3156631	-0.3257486	-0.7449240		
H	-2.3714678	-1.8995634	-1.0327944		
H	-2.4822376	2.0017362	0.4176387		
B	-2.6312725	0.8141939	0.6443916		
H	-2.3087605	0.4701386	1.7584265		
C	-6.2736222	-0.2279425	0.4027142		
C	-6.0183884	0.1636460	-0.8812158		
H	-7.1832160	-0.5935352	0.8640755		
H	-6.6575589	0.1875708	-1.7558250		
C	-4.1141031	0.4134242	0.3009432		
N	-4.6977293	0.5582156	-0.9166407		
N	-5.0939299	-0.0793273	1.1096613		
C	-2.7309884	-0.0462406	-2.2462662		
C	-2.9672647	-1.5066591	-1.9615265		
H	-3.9943255	-1.7617543	-1.6625565		
H	-2.6345311	-2.1831227	-2.7585044		
H	-2.2366674	0.1324276	-3.2077491		
P	0.1124814	-1.5479993	0.6708596		
P	-0.0277309	1.4792936	-0.8648370		
C	1.5185422	-0.7242801	1.5127471		
C	2.3923278	0.0371599	0.7123408		
C	1.7002969	-0.7863189	2.9021274		
C	3.4301130	0.7621459	1.3500225		
C	2.7306326	-0.0695407	3.5041960		
H	1.0473408	-1.4045204	3.5151069		
C	3.5876409	0.7188027	2.7402842		
H	2.8690736	-0.1230733	4.5852461		
H	4.3793499	1.2854011	3.2269611		
C	1.5079835	0.7758206	-1.6110143		
C	1.7200727	0.8204727	-2.9994415		
C	2.3916220	0.0407991	-0.7856346		
C	2.7709907	0.1151410	-3.5773101		
H	1.0851749	1.4329267	-3.6328338		
C	3.4438109	-0.6835580	-1.4044964		
C	3.6220474	-0.6583304	-2.7926270		
H	2.9294346	0.1665859	-4.6556699		
H	4.4289917	-1.2201495	-3.2595410		
C	-3.9087659	0.9034372	-2.0969121		
H	-3.5490488	1.9401946	-2.0024821		
H	-4.5935073	0.8636411	-2.9601500		
C	-4.9390914	-0.3570697	2.5333608		
H	-3.9750535	-0.8477649	2.7049639		
H	-4.9796294	0.5742737	3.1133817		
H	-5.7500259	-1.0215587	2.8515197		
C	-0.8023254	-2.4725243	1.9649528		
C	-1.0880731	-3.8386480	1.8086229		
C	-1.3449312	-1.7916432	3.0708130		
C	-1.8823941	-4.5097785	2.7411071		
H	-0.6820158	-4.3866810	0.9573581		
C	-2.1223376	-2.4705604	4.0100023		
H	-1.1562989	-0.7259847	3.2018243		
C	-2.3965931	-3.8314789	3.8475425		
H	-2.0882863	-5.5728427	2.6056583		
H	-2.5126162	-1.9327214	4.8763683		
H	-3.0031790	-4.3611994	4.5836511		
C	0.9698776	-2.8560555	-0.2952504		
C	1.9558150	-3.6588493	0.3002651		
C	0.6670040	-3.0393330	-1.6514832		
C	2.6077938	-4.6396584	-0.4461685		
H	2.2186974	-3.5077210	1.3489327		
C	1.3275293	-4.0136120	-2.4021857		
H	-0.0746797	-2.3963241	-2.1328210		
C	2.2954067	-4.8185973	-1.7978834		
H	3.3685178	-5.2632779	0.0266025		
H	1.0902368	-4.1397805	-3.4596254		
H	2.8100475	-5.5845851	-2.3804519		
C	-0.7207448	2.8005824	-1.9515929		
C	-1.0815063	4.0379996	-1.3910313		
C	-1.0546287	2.5613981	-3.2976735		
C	-1.7244391	5.0115160	-2.1591402		
H	-0.8631317	4.2473761	-0.3446265		
C	-1.6775708	3.5422557	-4.0690567		
H	-0.8450049	1.5957672	-3.7542477		
C	-2.0143075	4.7741442	-3.5027373		
H	-1.9948601	5.9631712	-1.6988995		
H	-1.9072567	3.3376813	-5.1161445		
H	-2.5060948	5.5398804	-4.1044218		
C	0.6157521	2.4618220	0.5465980		
C	1.6271871	3.3970106	0.2662208		
C	0.1314505	2.3399032	1.8533662		
C	2.1388204	4.2012335	1.2830739		
H	2.0189912	3.4922223	-0.7481339		
C	0.6563696	3.1387116	2.8706005		
H	-0.6549999	1.6203261	2.0717945		
C	1.6563723	4.0715808	2.5887177		
H	2.9183420	4.9299765	1.0542163		
H	0.2806948	3.0299347	3.8892118		
H	2.0594791	4.6993436	3.3851683		
O	4.2281591	1.4876334	0.5222046		
O	4.2423789	-1.3853256	-0.5583269		
C	5.2937366	2.2394943	1.1017209		
H	5.7964414	2.7337077	0.2632655		
H	4.9105181	3.0011891	1.8004574		
H	6.0093237	1.5843980	1.6245832		
C	5.3087203	-2.1544369	-1.1135908		
H	5.8031740	-2.6300164	-0.2596263		
H	4.9267308	-2.9330353	-1.7938223		
H	6.0313602	-1.5149798	-1.6459751		

VS.xyz					
98					
Energy = -2817.818912203					
Rh	-1.5211090	-0.1254705	-0.8394756		
H	-3.6925787	-0.3628069	-2.8496410		
H	-2.2032493	-1.1990694	1.6964543		
B	-2.6828937	-0.5667329	0.7795394		
H	-2.9369428	-1.2696127	-0.2754321		
C	-5.5806496	1.1784265	2.4725699		
C	-5.3436664	2.0380081	1.4363629		
H	-6.3201622	1.2085553	3.2642423		
H	-5.8241920	2.9709684	1.1665293		
C	-3.8711645	0.3506640	1.2617829		
N	-4.2991119	1.5138525	0.7106050		
N	-4.6641382	0.1559506	2.3571874		
C	-3.0732749	1.1940312	-1.4386337		
C	-4.1397192	0.3597374	-2.1496226		
H	-4.7618150	-0.2160590	-1.4480278		
H	-4.8149182	1.0026218	-2.7454173		
H	-2.5570430	1.8166918	-2.1852023		
P	0.0444932	-1.8994236	-0.6213380		
P	-0.0036042	1.4757267	-0.4441705		
C	1.0508114	-1.6779245	0.9001176		
C	1.9951898	-0.6298176	0.9391038		
C	0.7581694	-2.4078445	2.0616441		
C	2.6218917	-0.3310994	2.1741725		
C	1.3824657	-2.0892580	3.2649827		
H	0.0571539	-3.2394069	2.0236222		
C	2.3030675	-1.0464422	3.3350459		
H	1.1539137	-2.6655966	4.1631371		
H	2.7795073	-0.8071371	4.2839760		
C	1.7394675	1.1164439	-0.9425576		
C	2.3218608	1.8077983	-2.0182389		
C	2.4691917	0.1153202	-0.2680939		
C	3.6132408	1.5033306	-2.4360192		
H	1.7788018	2.6040630	-2.5208791		
C	3.7800185	-0.1825602	-0.7218771		
C	4.3455121	0.5039172	-1.8021347		
H	4.0562014	2.0516403	-3.2688333		
H	5.3497117	0.2657708	-2.1478551		
C	-3.6697384	2.1722441	-0.4517474		
H	-2.9052357	2.8647431	-0.0691659		
H	-4.4703760	2.7802964	-0.9111840		
C	-4.6190036	-1.0122307	3.2310231		
H	-5.2468551	-1.8177412	2.8270089		
H	-3.5853010	-1.3655007	3.3045338		
H	-4.9850668	-0.7274660	4.2237407		
C	-0.3863353	3.0542268	-1.3197670		
C	-0.5921610	4.2693579	-0.6512974		
C	-0.5697754	3.0140616	-2.7152624		
C	-0.9543279	5.4178491	-1.3620264		
H	-0.4693753	4.3276596	0.4304257		
C	-0.9160532	4.1630127	-3.4244392		
H	-0.4376256	2.0720058	-3.2535236		
C	-1.1112889	5.3705858	-2.7473926		
H	-1.1079513	6.3552813	-0.8249204		
H	-1.0422334	4.1132636	-4.5070800		
H	-1.3880783	6.2696343	-3.2999489		
C	0.2167130	1.9954729	1.3058930		
C	1.2800586	2.8612192	1.6187690		
C	-0.6444454	1.5798683	2.3262790		
C	1.4537584	3.3162929	2.9253285		
H	1.9793861	3.1713816	0.8407900		
C	-0.4607903	2.0249242	3.6360849		
H	-1.4404973	0.8740320	2.0928278		
C	0.5850039	2.8994646	3.9378419		
H	2.2794399	3.9921761	3.1542310		
H	-1.1319791	1.6800511	4.4245288		
H	0.7278472	3.2518769	4.9607654		
C	1.2592126	-2.0975000	-1.9778386		
C	2.3911294	-2.9154842	-1.8306524		
C	1.0171005	-1.4739790	-3.2088122		
C	3.2629341	-3.1024752	-2.9025196		
H	2.5910836	-3.3985188	-0.8726222		
C	1.8942229	-1.6571876	-4.2794057		
H	0.1360843	-0.8367905	-3.3267436		
C	3.0173381	-2.4729661	-4.1270560		
H	4.1367190	-3.7457693	-2.7836211		
H	1.7005587	-1.1633164	-5.2327982		
H	3.7017911	-2.6203765	-4.9639760		
C	-0.7178787	-3.5819044	-0.5418582		
C	-0.4050592	-4.5682786	-1.4925991		
C	-1.7020855	-3.8762859	0.4202560		
C	-1.0376620	-5.8134980	-1.4659586		
H	0.3336037	-4.3708914	-2.2679378		
C	-2.3206686	-5.1252904	0.4530574		
H	-2.0001590	-3.1196641	1.1439530		
C	-1.9907491	-6.1016400	-0.4898107		
H	-0.7780554	-6.5607640	-2.2176163		
H	-3.0720542	-5.3336309	1.2169939		
H	-2.4799265	-7.0766002	-0.4676654		
O	3.5302934	0.6814027	2.1390327		
O	4.4158491	-1.1802705	-0.0522908		
C	4.2109293	1.0189548	3.3460661		
H	4.8923427	1.8354302	3.0824646		
H	3.5062079	1.3666402	4.1193561		
H	4.7928952	0.1660704	3.7313904		
C	5.7476843	-1.5138801	-0.4423033		
H	6.0572723	-2.3228002	0.2283369		
H	5.7827410	-1.8685656	-1.4854503		
H	6.4281554	-0.6554699	-0.3213126		

VIS.xyz				H	6.2813064	-0.8610152	-2.0487064
98				C	5.6264687	1.2729742	2.0631792
Energy = -2817.854979644				H	6.2338594	1.9840025	1.4925692
Rh	-1.3199331	0.1463231	-0.1545995	H	5.2497774	1.7623359	2.9765573
H	-2.7797715	0.1478931	-3.3698136	H	6.2431445	0.4019564	2.3381620
H	-2.7465353	1.2580464	-0.3049812	C	-0.3747851	3.2060898	-0.8613018
B	-3.4797659	0.2014750	-0.5197965	C	-0.2155811	4.4786775	-0.2954398
H	-2.7494195	-0.8960384	-0.4777698	C	-1.1275522	3.0748651	-2.0429436
C	-6.2488496	-0.2064514	2.0763171	C	-0.7893616	5.5974035	-0.9059402
C	-6.8334728	-0.4004197	0.8506307	H	0.3486935	4.6027130	0.6288542
H	-6.6759581	-0.2348887	3.0723825	C	-1.6874025	4.1940766	-2.6560956
H	-7.8572387	-0.6399420	0.5884519	H	-1.2795194	2.0818511	-2.4733157
C	-4.6618765	0.0608840	0.5263813	C	-1.5203854	5.4602562	-2.0867212
N	-5.8346767	-0.2227678	-0.0789918	H	-0.6621485	6.5815446	-0.4519784
N	-4.9093424	0.0729380	1.8541415	H	-2.2604372	4.0773397	-3.5775702
C	-4.3666637	0.2769398	-1.8963615	H	-1.9644598	6.3369122	-2.5609171
C	-3.7373282	-0.3433033	-3.1434563	C	0.9894790	2.2119801	1.5083546
H	-3.5237603	-1.4121285	-2.9884502	C	2.1379490	3.0178196	1.5696173
H	-4.3787903	-0.2486988	-4.0335921	C	0.3504452	1.8295592	2.6950548
H	-4.5393993	1.3518236	-2.0897055	C	2.6265558	3.4437143	2.8048274
P	0.1485219	-1.5040323	0.0835492	H	2.6597231	3.2954472	0.6520365
P	0.3000847	1.6727240	-0.0998939	C	0.8493172	2.2458765	3.9297266
C	1.5981729	-1.2156322	1.1741004	H	-0.5270919	1.1811177	2.6322084
C	2.6043997	-0.3254901	0.7483832	C	1.9854149	3.0571073	3.9855625
C	1.6405011	-1.7739161	2.4610897	H	3.5156463	4.0755233	2.8457894
C	3.6380138	0.0089580	1.6574960	H	0.3554321	1.9327343	4.8510558
C	2.6740082	-1.4394073	3.3317506	H	2.3747503	3.3857320	4.9506097
H	0.8739134	-2.4783289	2.7793132	C	-0.7589165	-2.9113801	0.8454385
C	3.6677825	-0.5433103	2.9442622	C	-0.7452194	-4.2077211	0.3135841
H	2.7074124	-1.8807082	4.3291426	C	-1.5535160	-2.6464544	1.9753408
H	4.4621569	-0.2830816	3.6414711	C	-1.5067517	-5.2195238	0.9059051
C	1.7780915	1.2370850	-1.1039923	H	-0.1472282	-4.4312198	-0.5701750
C	1.9377071	1.7759477	-2.3898828	C	-2.3008474	-3.6598384	2.5720165
C	2.6669820	0.2517631	-0.6281304	H	-1.5802753	-1.6311457	2.3778841
C	2.9702495	1.3291973	-3.2096756	C	-2.2815687	-4.9512911	2.0350842
H	1.2611834	2.5499902	-2.7479850	H	-1.4908868	-6.2238249	0.4794617
C	3.7029915	-0.1935137	-1.4856755	H	-2.9019171	-3.4449183	3.4578767
C	3.8486185	0.3404549	-2.7720209	H	-2.8711539	-5.7453162	2.4960200
H	3.0932421	1.7544403	-4.2069816	C	0.8675067	-2.1814396	-1.4562422
H	4.6433020	-0.0060585	-3.4301941	C	1.9402655	-3.0865957	-1.4177282
C	-5.7419283	-0.3436635	-1.5456095	C	0.3230435	-1.8022374	-2.6912465
H	-6.6021804	0.1580850	-2.0106567	C	2.4523659	-3.6103329	-2.6049371
H	-5.7807396	-1.4128689	-1.8089461	H	2.3860233	-3.3660031	-0.4614045
C	-3.9071273	0.3620757	2.8729621	C	0.8460747	-2.3200237	-3.8766539
H	-3.8522400	-0.4667441	3.5903488	H	-0.5007678	-1.0842501	-2.7069432
H	-2.9389134	0.4765364	2.3654441	C	1.9090700	-3.2257719	-3.8345579
H	-4.1585327	1.2910772	3.4008483	H	3.2829029	-4.3176914	-2.5699378
O	4.5045127	-1.1674929	-0.9776332	H	0.4257094	-2.0128505	-4.8355897
O	4.5557218	0.8996667	1.1969438	H	2.3167297	-3.6323273	-4.7616813
C	5.5661329	-1.6599704	-1.7940469				
H	6.0717122	-2.4232443	-1.1924243				
H	5.1791480	-2.1186594	-2.7188923				

Ts0_IR.xyz			H	-1.1193203	-0.9524640	3.0746205	
98			C	-2.0104145	-4.6143966	2.1568638	
Energy = -2817.809595906			H	-0.8565235	-4.2979624	0.3623775	
Rh	-1.2797532	0.2274992	-0.0121591	C	-2.4781481	-4.0648349	3.3511273
P	0.0509398	-1.4431781	0.4662597	H	-2.5050551	-2.3105882	4.6189318
P	0.4464746	1.5880406	-0.2952234	H	-2.2639357	-5.6420330	1.8912627
C	-0.2242080	3.0922289	-1.1190828	H	-3.0969304	-4.6608794	4.0237079
C	-0.0222538	4.3826006	-0.6051849	C	1.6825722	-1.1588584	1.2580822
C	-1.0443693	2.9344608	-2.2522411	C	1.9038657	-1.5136210	2.5980770
C	-0.6111847	5.4893497	-1.2218112	C	2.6779339	-0.4825049	0.5245259
H	0.5952172	4.5300503	0.2806587	C	3.1064053	-1.1831101	3.2166105
C	-1.6163917	4.0429003	-2.8739553	H	1.1451313	-2.0611998	3.1542128
H	-1.2459143	1.9333655	-2.6379267	C	3.8842053	-0.1381432	1.1834042
C	-1.4022860	5.3250031	-2.3595842	C	4.0935551	-0.4859574	2.5238689
H	-0.4458745	6.4855602	-0.8082281	H	3.2784987	-1.4687564	4.2555865
H	-2.2375635	3.9043635	-3.7605728	H	5.0213592	-0.2203723	3.0273692
H	-1.8557807	6.1922751	-2.8420688	O	4.7816839	0.5545299	0.4345562
C	1.6997810	0.8590131	-1.4274666	O	4.1596990	-1.8169771	-1.2940341
C	2.5553678	-0.1433267	-0.9256134	C	6.0153595	0.9357746	1.0420480
C	1.7081432	1.1816751	-2.7925234	H	6.5727353	1.4724676	0.2666371
C	3.3866068	-0.8396662	-1.8374317	H	5.8465505	1.6045058	1.9022341
C	2.5466181	0.4941180	-3.6657282	H	6.5932033	0.0549060	1.3657355
H	1.0696469	1.9768349	-3.1731563	C	5.0085408	-2.5660956	-2.1623509
C	3.3749712	-0.5256115	-3.2021161	H	5.5284656	-3.2845364	-1.5191547
H	2.5540989	0.7523887	-4.7258787	H	4.4222157	-3.1104033	-2.9208370
H	4.0127504	-1.0637344	-3.9009985	H	5.7481285	-1.9179530	-2.6599153
C	1.4658548	2.2534004	1.0778503	C	-7.0746132	0.0551960	-0.6159224
C	2.6233504	2.9962908	0.7905967	C	-6.7095082	0.3022190	0.6748836
C	1.0983719	2.0424479	2.4119424	C	-4.8219581	-0.0208695	-0.5171492
C	3.3857699	3.5326924	1.8276806	N	-5.9093372	-0.1423331	-1.3290809
H	2.9339930	3.1435036	-0.2454496	H	-8.0533352	0.0002336	-1.0772005
C	1.8697935	2.5691122	3.4487507	H	-7.3084915	0.5041472	1.5548601
H	0.2194035	1.4362857	2.6307502	N	-5.3308624	0.2488751	0.7176032
C	3.0111766	3.3196139	3.1579578	C	-4.5331526	0.5176175	1.9239865
H	4.2794457	4.1149245	1.5960634	H	-3.8287001	-0.3142565	2.0714406
H	1.5829960	2.3867959	4.4855842	H	-5.2443035	0.5120731	2.7644395
H	3.6126153	3.7355538	3.9679707	C	-3.8007790	1.8249319	1.8349154
C	0.4722965	-2.5055053	-0.9684972	H	-4.3716514	2.6791082	1.4586241
C	1.4264740	-3.5275795	-0.8355337	C	-2.5156784	1.9584667	2.1802158
C	-0.1599722	-2.3025394	-2.2025738	H	-1.9474904	1.1105216	2.5669588
C	1.7335800	-4.3409546	-1.9263823	H	-2.0037719	2.9194433	2.1302709
H	1.9404371	-3.6765898	0.1157991	C	-5.8590050	-0.4299788	-2.7607753
C	0.1602678	-3.1108870	-3.2941265	B	-3.3099906	-0.1598374	-0.9728615
H	-0.8874665	-1.4932085	-2.2964624	H	-3.2443572	-0.6805188	-2.0630682
C	1.1049374	-4.1310852	-3.1575089	H	-2.7834616	0.9959384	-0.9928531
H	2.4727549	-5.1364516	-1.8162833	H	-2.7197765	-0.9005046	-0.0857254
H	-0.3256539	-2.9399627	-4.2561263	H	-5.3532362	-1.3862801	-2.9357483
H	1.3535463	-4.7637986	-4.0113998	H	-6.8856014	-0.4815884	-3.1384915
C	-0.8792505	-2.5349101	1.6176741	H	-5.3144536	0.3624127	-3.2873927
C	-1.3644838	-1.9854164	2.8187987				
C	-1.2127147	-3.8571585	1.2938002				
C	-2.1488253	-2.7463386	3.6836807				

```

Ts0_IIR.xyz
98
Energy = -2817.816094756
Rh -0.9895090 -0.9347112 -0.6905620
P 1.1718695 -0.9547282 -0.2820072
P -1.0728194 1.2609763 -0.3986089
C -2.7109868 1.8073736 -1.0362148
C -3.5711461 2.6406277 -0.3046630
C -3.1512544 1.2899636 -2.2692662
C -4.8384252 2.9571640 -0.8016985
H -3.2590778 3.0419782 0.6594669
C -4.4102573 1.6197823 -2.7680539
H -2.5060226 0.6096877 -2.8297557
C -5.2590182 2.4535976 -2.0334827
H -5.4976648 3.6033013 -0.2196818
H -4.7326957 1.2177118 -3.7298702
H -6.2478816 2.7056330 -2.4197660
C 0.2101205 2.1118062 -1.4037693
C 1.5480994 2.0878702 -0.9577722
C -0.1086527 2.6267073 -2.6689034
C 2.5587537 2.5591241 -1.8310624
C 0.9017009 3.0985541 -3.5026992
H -1.1448780 2.6654422 -3.0008729
C 2.2348755 3.0551431 -3.1003427
H 0.6496332 3.5025238 -4.4844488
H 3.0132269 3.4151943 -3.7707270
C -0.9490928 2.0480079 1.2504366
C -0.8281260 3.4421294 1.3716844
C -0.9985610 1.2550303 2.4032488
C -0.7743443 4.0302472 2.6352000
H -0.7604263 4.0643861 0.4773436
C -0.9302423 1.8458308 3.6659770
H -1.0751850 0.1713650 2.2942316
C -0.8234605 3.2337030 3.7835610
H -0.6883343 5.1147132 2.7238315
H -0.9505264 1.2212720 4.5610048
H -0.7734472 3.6960861 4.7707304
C 2.2537455 -0.9324825 -1.7581431
C 3.6423618 -0.7658576 -1.6285586
C 1.6878445 -1.0775992 -3.0330447
C 4.4523061 -0.7590846 -2.7644724
H 4.0867283 -0.6216316 -0.6421139
C 2.5012059 -1.0584151 -4.1665507
H 0.6037296 -1.1813467 -3.1229250
C 3.8833210 -0.9019245 -4.0334774
H 5.5312354 -0.6330367 -2.6582187
H 2.0540903 -1.1602176 -5.1565900
H 4.5189877 -0.8883081 -4.9205202
C 1.4808639 -2.5670642 0.5506584
C 0.6551511 -2.9116412 1.6376836
C 2.4562174 -3.4768776 0.1190818
C 0.8240096 -4.1290804 2.2962296
H -0.1296940 -2.2196273 1.9537623
C 2.6115444 -4.7039337 0.7721179
H 3.0951307 -3.2311928 -0.7299918
C 1.8037527 -5.0294845 1.8636239
H 0.1850636 -4.3777951 3.1456449
H 3.3731101 -5.4048769 0.4264803
H 1.9359413 -5.9838697 2.3760855
C 1.9326386 0.2935674 0.8253673
C 2.3891390 -0.0655995 2.1029864
C 1.9581765 1.6383018 0.4068627
C 2.8643478 0.9132545 2.9713890
H 2.3816398 -1.1079262 2.4168881
C 2.4258259 2.6178212 1.3169458
C 2.8763436 2.2536140 2.5924105
H 3.2267045 0.6312446 3.9612128
H 3.2362917 3.0082718 3.2894718
O 2.3769647 3.9002087 0.8710063
O 3.8287046 2.4777358 -1.3526739
C 2.8341949 4.9351634 1.7413069
H 2.7050285 5.8687223 1.1830649
H 2.2343563 4.9737390 2.6655193
H 3.8983561 4.8045028 1.9962266
C 4.8955507 2.9142585 -2.1942815
H 5.8120132 2.7542326 -1.6158034
H 4.9394155 2.3208996 -3.1222920
H 4.8010698 3.9840307 -2.4416022
C -2.8322069 -5.2299538 1.3924593
C -3.7874226 -4.3375831 1.7804620
C -2.7657678 -3.4942131 -0.0395152
N -2.2212210 -4.6983747 0.2717651
H -2.5491368 -6.1911237 1.8041408
H -4.5057394 -4.3764375 2.5901522
N -3.7343855 -3.2807150 0.8876886
C -4.5704628 -2.0748091 0.9594335
H -5.5511081 -2.3892189 1.3463603
H -4.7239578 -1.7223294 -0.0665864
C -3.9806390 -0.9740196 1.8168796
H -3.8647019 -0.0040764 1.3263122
C -3.6321148 -1.1191053 3.0965733
H -3.7289602 -2.0693162 3.6276609
H -3.2263952 -0.2819042 3.6647831
C -1.1485066 -5.3273321 -0.4912172
B -2.3415317 -2.5916788 -1.2747317
H -2.7504861 -3.0436096 -2.3249618
H -2.7608455 -1.3898138 -1.1534392
H -1.0463827 -2.6039422 -1.4072120
H -0.2363620 -4.7205657 -0.4264481
H -0.9523326 -6.3192395 -0.0719224
H -1.4489856 -5.4248278 -1.5418915

```

TsI_IIR.xyz

98

Energy = -2817.826371612

Rh -0.9267181 -1.2251794 -0.2330337
P 1.3441638 -1.2003148 -0.1354729
P -0.9678903 1.0954230 -0.2205784
C -2.4923733 1.6143684 -1.1107684
C -3.4331202 2.4927174 -0.5584700
C -2.7528980 1.0392112 -2.3676266
C -4.6061288 2.7985413 -1.2554099
H -3.2612348 2.9344922 0.4229715
C -3.9154554 1.3577597 -3.0668516
H -2.0396687 0.3291133 -2.7920266
C -4.8482427 2.2387411 -2.5100489
H -5.3317984 3.4819369 -0.8111168
H -4.0978744 0.9127269 -4.0465464
H -5.7621170 2.4840247 -3.0534359
C 0.3987693 1.9550349 -1.1025405
C 1.6888812 1.9281900 -0.5386456
C 0.1832359 2.5618472 -2.3493381
C 2.7600512 2.5041436 -1.2652793
C 1.2491244 3.1350879 -3.0380653
H -0.8173276 2.6018105 -2.7758810
C 2.5382516 3.1036539 -2.5110020
H 1.0747205 3.6141794 -4.0028447
H 3.3617051 3.5451126 -3.0693913
C -1.0296489 1.9973226 1.3781595
C -0.9045658 3.3968598 1.3988609
C -1.1954262 1.3043825 2.5840405
C -0.9639320 4.0886804 2.6084372
H -0.7455719 3.9443891 0.4681758
C -1.2394683 1.9985422 3.7940077
H -1.2785701 0.2176787 2.5734338
C -1.1286023 3.3908054 3.8085503
H -0.8726476 5.1762985 2.6136498
H -1.3567471 1.4486559 4.7292427
H -1.1680319 3.9330140 4.7549252
C 2.3818212 -0.8284070 -1.6018232
C 3.7783329 -0.7537555 -1.4617177
C 1.8044354 -0.6038196 -2.8583863
C 4.5807810 -0.4917722 -2.5716356
H 4.2368629 -0.8857803 -0.4800143
C 2.6096486 -0.3309312 -3.9645082
H 0.7183473 -0.6036782 -2.9545662
C 3.9984774 -0.2839494 -3.8254529
H 5.6647535 -0.4425496 -2.4544966
H 2.1490944 -0.1437948 -4.9356475
H 4.6279767 -0.0765043 -4.6923902
C 1.9354120 -2.8491826 0.4384499
C 1.3232490 -3.4121056 1.5761110
C 2.8810101 -3.6107772 -0.2622791
C 1.6839911 -4.6812003 2.0242317

H 0.5379502 -2.8589513 2.0960633
C 3.2294141 -4.8904992 0.1810305
H 3.3468781 -3.2139722 -1.1637602
C 2.6426388 -5.4244628 1.3279636
H 1.2087804 -5.0952423 2.9151549
H 3.9653103 -5.4698707 -0.3787828
H 2.9215248 -6.4207964 1.6742780
C 1.9526181 -0.0000529 1.1274283
C 2.2983581 -0.4382614 2.4154968
C 1.9770140 1.3753161 0.8166472
C 2.6512522 0.4829796 3.3974661
H 2.3165497 -1.4998045 2.6512667
C 2.3343592 2.2939214 1.8360462
C 2.6621292 1.8477806 3.1218556
H 2.9244319 0.1327730 4.3940996
H 2.9302747 2.5557661 3.9038792
O 2.3156424 3.6031462 1.4750261
O 3.9818917 2.4092693 -0.6781672
C 2.6628991 4.5792695 2.4563118
H 2.5823042 5.5474680 1.9502105
H 1.9652337 4.5528025 3.3093614
H 3.6951914 4.4380552 2.8154308
C 5.1013065 2.9768725 -1.3569868
H 5.9649650 2.7910820 -0.7092214
H 5.2639118 2.4913612 -2.3333314
H 4.9762778 4.0625289 -1.4994894
C -5.6638964 -3.9886019 0.7535757
C -4.6796510 -4.6512447 0.0836488
C -3.8598422 -2.6409553 0.6652455
N -5.1460392 -2.7571928 1.1012699
H -6.6740070 -4.2872626 1.0073869
H -4.6661653 -5.6416152 -0.3560202
N -3.5818800 -3.8100196 0.0392656
C -2.3093756 -4.2745293 -0.5737078
H -2.6050769 -4.6922937 -1.5490787
H -1.9864898 -5.1206483 0.0506548
C -1.1067574 -3.3670420 -0.7683109
H -0.2190176 -3.8494343 -0.3584824
C -0.8877634 -2.5559348 -1.9121951
H -1.7191264 -2.3287176 -2.5879674
H 0.0876630 -2.5804958 -2.3996279
C -5.8859571 -1.7138781 1.8068419
B -2.9606411 -1.3566430 0.7878463
H -3.5658067 -0.4025422 1.2116728
H -1.9058089 -1.5797210 1.4552691
H -2.6825541 -1.0673610 -0.4546582
H -6.0078038 -0.8338430 1.1638139
H -6.8701175 -2.1115527 2.0766551
H -5.3500296 -1.4179924 2.7156693

TsII_IIIR.xyz

98

Energy = -2817.814902887

Rh -1.3263971 0.1598186 0.5559311
H -2.4232048 0.4611281 -1.7371843
H -2.3980510 -0.9227128 0.9233367
B -2.9121667 -0.3179932 -0.9378435
H -2.9460617 -1.4706577 -1.3013339
C -6.4569286 0.4295681 0.2048385
C -5.8430839 1.6277837 0.4303507
H -7.4829294 0.1190235 0.3625420
H -6.2277511 2.5556220 0.8368710
C -4.3008111 0.2192788 -0.4241919
N -4.5298572 1.4822145 0.0336609
N -5.4964336 -0.4226829 -0.3091938
C -2.4046265 2.0513362 1.1711571
C -2.5822432 1.0300536 2.1060550
H -3.5409933 0.5209864 2.2046207
H -1.9564984 0.9987839 3.0020075
H -1.6594855 2.8269306 1.3578244
P -0.1457212 -1.7552969 0.1409616
P 0.4536774 1.6414713 -0.1858230
C 1.3725373 -1.5023375 1.1577994
C 2.4069626 -0.6606157 0.6911960
C 1.4079674 -2.0055415 2.4689637
C 3.4558386 -0.3256706 1.5849614
C 2.4543907 -1.6679679 3.3223479
H 0.6238698 -2.6743214 2.8192785
C 3.4735699 -0.8203093 2.8951162
H 2.4779335 -2.0703908 4.3363518
H 4.2801651 -0.5566732 3.5768827
C 1.7914437 0.9322065 -1.2250543
C 2.0596947 1.4281006 -2.5101195
C 2.5326868 -0.1480239 -0.7091239
C 3.0499242 0.8410507 -3.2921788
H 1.5052313 2.2801230 -2.8985912
C 3.5363090 -0.7266581 -1.5243440
C 3.7847719 -0.2406539 -2.8131685
H 3.2548226 1.2314257 -4.2902705
H 4.5505650 -0.6941395 -3.4398530
C -3.4700722 2.4776611 0.1846964
H -3.9478554 3.4120706 0.5184482
H -3.0253893 2.6734712 -0.8026175
C 0.4560281 -2.2647805 -1.5089242
C 1.4611329 -3.2412555 -1.6163945
C -0.1066693 -1.7197648 -2.6699179
C 1.8862401 -3.6704603 -2.8729088
H 1.9232044 -3.6515934 -0.7168367
C 0.3322861 -2.1440925 -3.9253514
H -0.8887362 -0.9648803 -2.5862754
C 1.3242380 -3.1214489 -4.0291930
H 2.6618263 -4.4346401 -2.9490245

H -0.1047833 -1.7098685 -4.8259156
H 1.6617182 -3.4553671 -5.0117458
C -0.9705366 -3.2707166 0.7975593
C -1.6675386 -3.1895846 2.0170775
C -0.9718706 -4.4892918 0.1044738
C -2.3178439 -4.3044702 2.5434734
H -1.7112262 -2.2381175 2.5504429
C -1.6407155 -5.6011466 0.6249133
H -0.4650662 -4.5774585 -0.8555628
C -2.3072495 -5.5164672 1.8469459
H -2.8415479 -4.2237806 3.4975685
H -1.6382006 -6.5377930 0.0650559
H -2.8237906 -6.3876073 2.2529779
C -0.2383516 3.0279666 -1.1651759
C -0.2779608 4.3422199 -0.6738276
C -0.8879423 2.7386169 -2.3802347
C -0.9448358 5.3441804 -1.3843700
H 0.2166081 4.5894073 0.2665420
C -1.5398162 3.7448115 -3.0934838
H -0.8881917 1.7193126 -2.7684438
C -1.5737170 5.0509243 -2.5958052
H -0.9630540 6.3614356 -0.9896764
H -2.0283807 3.5046376 -4.0392683
H -2.0862304 5.8367813 -3.1526014
C 1.3984526 2.4397515 1.1689445
C 2.5005692 3.2641969 0.8885942
C 1.0468280 2.1950762 2.5029764
C 3.2172358 3.8534685 1.9292832
H 2.8029876 3.4350602 -0.1463733
C 1.7709813 2.7778363 3.5447926
H 0.2203818 1.5173865 2.7259213
C 2.8526453 3.6130646 3.2583326
H 4.0694072 4.4967069 1.7033198
H 1.4942090 2.5727026 4.5800197
H 3.4176443 4.0733205 4.0707189
O 4.4110659 0.4978197 1.0786896
O 4.2069311 -1.7720045 -0.9695699
C 5.2552487 -2.3770143 -1.7259223
H 5.6575623 -3.1727571 -1.0895691
H 4.8725378 -2.8143905 -2.6627266
H 6.0527568 -1.6522473 -1.9565891
C 5.4880896 0.8898453 1.9292353
H 6.1201149 1.5449908 1.3198703
H 5.1215081 1.4490762 2.8053249
H 6.0759511 0.0188173 2.2613029
C -5.7469347 -1.8071895 -0.6956218
H -6.2282141 -1.8477828 -1.6819607
H -4.7907860 -2.3373893 -0.7389789
H -6.3998191 -2.2767145 0.0498494

TsIII_IVR.xyz

98

Energy = -2817.807762450

Rh -1.2800227 0.1284238 0.6750147
H -2.2874440 0.3836012 -1.8353805
H -2.2967059 -0.8165762 1.5204802
B -2.6725558 -0.3958200 -0.9882349
H -2.5713489 -1.5647958 -1.2833061
C -6.3483701 -0.1027637 -0.0995605
C -5.8920448 1.1250738 0.2867553
H -7.3442541 -0.5286881 -0.0724796
H -6.4099548 1.9650408 0.7342713
C -4.1347809 -0.0307872 -0.5290145
N -4.5413912 1.1522653 0.0082319
N -5.2577469 -0.8008918 -0.5843802
C -2.5804580 1.7067231 1.3990919
C -2.8171359 0.5230832 2.1720434
H -3.8116526 0.0649784 2.1583178
H -2.3448695 0.4558629 3.1574183
H -1.9919861 2.5090395 1.8502969
P -0.0233416 -1.7402120 0.1990748
P 0.2503502 1.6605600 -0.2340018
C 1.5198754 -1.3769011 1.1426596
C 2.4519424 -0.4574083 0.6097561
C 1.6764275 -1.8672413 2.4492035
C 3.5272125 -0.0391277 1.4348118
C 2.7438766 -1.4425346 3.2351854
H 0.9743290 -2.5982645 2.8462689
C 3.6644590 -0.5207134 2.7426443
H 2.8634812 -1.8355170 4.2461666
H 4.4883614 -0.1894928 3.3721348
C 1.6136579 1.0556186 -1.3035154
C 1.7886690 1.5485049 -2.6054560
C 2.4600468 0.0453300 -0.8020495
C 2.7870635 1.0268170 -3.4226493
H 1.1573339 2.3522040 -2.9787808
C 3.4683981 -0.4684810 -1.6561936
C 3.6210978 0.0115930 -2.9621509
H 2.9190053 1.4157082 -4.4335348
H 4.3901424 -0.3949847 -3.6163484
C -3.6041206 2.2076962 0.3951657
H -4.2039032 3.0302782 0.8153110
H -3.1110327 2.5909473 -0.5110139
O 4.3860184 0.8491651 0.8676745
O 4.2441789 -1.4469993 -1.1186373
C 5.4923651 1.3102424 1.6417745
H 6.0395005 2.0008005 0.9906802
H 5.1536237 1.8487207 2.5419272
H 6.1542151 0.4783502 1.9324013
C 5.2923487 -1.9922297 -1.9188497
H 5.7828589 -2.7437411 -1.2906486
H 4.8929048 -2.4760014 -2.8253238

H 6.0230562 -1.2181754 -2.2043574
C -5.3149683 -2.1577897 -1.1203365
H -5.3797420 -2.1360488 -2.2160201
H -4.4095396 -2.7000494 -0.8283568
H -6.1987005 -2.6598775 -0.7112345
C -0.5385434 3.0571364 -1.1195351
C -0.6680035 4.3186560 -0.5150986
C -1.1809445 2.8303406 -2.3517200
C -1.4069995 5.3298906 -1.1337054
H -0.1875915 4.5167703 0.4435707
C -1.9088326 3.8472534 -2.9713134
H -1.1212618 1.8513855 -2.8271875
C -2.0257226 5.1002725 -2.3642084
H -1.4909887 6.3052354 -0.6514641
H -2.3901814 3.6553744 -3.9316742
H -2.5958681 5.8940640 -2.8490948
C 1.1723253 2.4542329 1.1435191
C 0.8525307 2.1609036 2.4764833
C 2.2275564 3.3399637 0.8715011
C 1.5635566 2.7496217 3.5233626
H 0.0585998 1.4431257 2.6979019
C 2.9285681 3.9386743 1.9177093
H 2.5054049 3.5535445 -0.1623164
C 2.5981625 3.6451668 3.2445951
H 1.3135016 2.5031541 4.5563141
H 3.7425009 4.6311888 1.6964918
H 3.1514942 4.1119372 4.0612456
C -0.7479947 -3.2925786 0.8897591
C -0.8246558 -4.4809649 0.1489793
C -1.3278104 -3.2659770 2.1711841
C -1.4485048 -5.6133432 0.6818209
H -0.4085106 -4.5289037 -0.8564676
C -1.9287538 -4.4016747 2.7110544
H -1.3189882 -2.3409168 2.7509422
C -1.9927872 -5.5824785 1.9651699
H -1.5047743 -6.5245191 0.0838959
H -2.3567915 -4.3618690 3.7141957
H -2.4719040 -6.4698402 2.3816879
C 0.5976582 -2.2630997 -1.4456139
C 0.0672433 -1.7424771 -2.6327275
C 1.6213121 -3.2246807 -1.5096322
C 0.5524825 -2.1782186 -3.8669288
H -0.7204718 -0.9920393 -2.5887000
C 2.0921771 -3.6673966 -2.7450351
H 2.0593954 -3.6178290 -0.5904814
C 1.5596741 -3.1436299 -3.9265403
H 0.1411564 -1.7589977 -4.7865716
H 2.8808769 -4.4208637 -2.7839663
H 1.9319512 -3.4870727 -4.8932114

TsIV_VR.xyz

98

Energy = -2817.821604328

Rh	-0.3703105	1.5422601	0.3906698
H	2.3952015	1.2910961	1.0605786
H	-0.9688263	3.7498269	-0.0718973
B	1.5194750	2.1322788	1.1511192
H	1.5577781	2.9803002	0.2566787
C	2.4568401	3.7512482	4.4350481
C	1.1024332	3.7253734	4.5886507
H	3.2378012	4.1371989	5.0795434
H	0.4745430	4.0611600	5.4050242
C	1.5701084	2.7983837	2.5901868
N	0.5793458	3.1451746	3.4484749
N	2.7261200	3.1772074	3.2075228
C	-1.2895597	2.6976218	1.8445431
C	-1.1860768	3.9696967	1.0032428
H	-0.3682365	4.6250142	1.3334166
H	-2.1252449	4.5461512	0.9776574
H	-2.3287548	2.3271643	1.8793601
P	0.1675041	0.7703191	-1.7927056
P	-0.5412795	-0.4429932	1.2863407
C	-1.0766451	-0.5159056	-2.2264115
C	-0.9520621	-1.7738120	-1.6025168
C	-2.1718172	-0.2425956	-3.0586174
C	-1.9535028	-2.7472506	-1.8351871
C	-3.1489800	-1.2136094	-3.2655354
H	-2.2524548	0.7197222	-3.5617240
C	-3.0536658	-2.4613898	-2.6535399
H	-3.9964795	-0.9988456	-3.9185613
H	-3.8281064	-3.2072629	-2.8230994
C	0.5157452	-1.7428631	0.5181026
C	1.6337125	-2.2429509	1.2051592
C	0.2419704	-2.1770859	-0.7980807
C	2.4926225	-3.1474027	0.5883881
H	1.8265267	-1.9479782	2.2332047
C	1.1302289	-3.1052894	-1.4003518
C	2.2563620	-3.5752310	-0.7149311
H	3.3582370	-3.5289580	1.1321458
H	2.9423779	-4.2754728	-1.1879573
C	-0.8496484	2.8350250	3.2809836
H	-1.3938173	3.6492703	3.7927446
H	-1.0551618	1.9057697	3.8324253
C	4.0521534	3.0272042	2.6197744
H	4.2673332	1.9656558	2.4434599
H	4.1022298	3.5590919	1.6614641
H	4.7929701	3.4446553	3.3098612
C	1.7335514	0.0724555	-2.4375519
C	1.7544759	-0.6024711	-3.6693885
C	2.9245921	0.2402159	-1.7191567
C	2.9566181	-1.0970648	-4.1743723
H	0.8281140	-0.7485238	-4.2275454

C	4.1237075	-0.2664232	-2.2244980
H	2.9053338	0.7573712	-0.7601504
C	4.1424133	-0.9336281	-3.4511559
H	2.9674679	-1.6136380	-5.1359067
H	5.0470203	-0.1398733	-1.6566328
H	5.0813717	-1.3243235	-3.8472344
C	-0.1719936	2.1903672	-2.9115011
C	-1.3618902	2.9211034	-2.7299313
C	0.7539971	2.6384403	-3.8644119
C	-1.6283727	4.0545787	-3.4962150
H	-2.0945420	2.5945984	-1.9865492
C	0.4914285	3.7836209	-4.6214284
H	1.6874683	2.0961932	-4.0157327
C	-0.6980857	4.4912728	-4.4442423
H	-2.5616948	4.6008349	-3.3500643
H	1.2243138	4.1210517	-5.3561282
H	-0.9006661	5.3824690	-5.0399848
C	-2.2369691	-1.1282637	1.1346670
C	-2.4867595	-2.4648801	1.4867091
C	-3.2953110	-0.3252977	0.6880454
C	-3.7807029	-2.9783061	1.4065917
H	-1.6664581	-3.1057963	1.8144544
C	-4.5858555	-0.8467187	0.5919248
H	-3.1031940	0.7093457	0.3969844
C	-4.8308798	-2.1724890	0.9566224
H	-3.9682507	-4.0150466	1.6913532
H	-5.4001839	-0.2177610	0.2295426
H	-5.8411447	-2.5794031	0.8891054
C	-0.2098998	-0.5082635	3.0988318
C	-1.2321419	-0.7982072	4.0173005
C	1.0550956	-0.1418889	3.5951402
C	-0.9915294	-0.7334077	5.3926310
H	-2.2265434	-1.0693394	3.6639524
C	1.2945521	-0.0888322	4.9677427
H	1.8526624	0.1209471	2.9004014
C	0.2705466	-0.3817460	5.8729157
H	-1.7998830	-0.9609690	6.0893603
H	2.2846958	0.1912582	5.3316827
H	0.4564045	-0.3350261	6.9469906
O	0.8137002	-3.4767411	-2.6680910
O	-1.7675929	-3.9397251	-1.2081795
C	-2.7127865	-4.9812535	-1.4482675
H	-2.3543033	-5.8436577	-0.8755439
H	-3.7183002	-4.6994765	-1.0946865
H	-2.7570202	-5.2431172	-2.5177454
C	1.6592495	-4.4184056	-3.3277966
H	1.2076257	-4.5798264	-4.3126943
H	2.6788188	-4.0189019	-3.4538065
H	1.6987396	-5.3744044	-2.7810113

TsV_VIR.xyz

98

Energy = -2817.811676430

Rh -1.2776399 -0.2423866 0.1911438
H -2.8597237 -0.5271446 -1.7295509
H -2.3788431 -0.0540383 2.8863750
B -3.1514919 -0.6128365 -0.5458640
H -2.5775566 -1.5707111 0.1094034
C -6.9406085 -0.5327320 -0.4723688
C -6.5770097 0.6878098 0.0278911
H -7.9196438 -0.9558707 -0.6645606
H -7.1784861 1.5329742 0.3404388
C -4.7042869 -0.4844153 -0.3597291
N -5.1995329 0.6851758 0.0884472
N -5.7713632 -1.2384628 -0.7145099
C -2.9913248 0.9889021 1.0741170
C -3.3008293 0.2888844 2.3970985
H -3.9418934 -0.5960231 2.2669610
H -3.8142397 0.9715290 3.0997845
H -2.2768417 1.8040882 1.2566605
P 0.4888278 -1.6651509 0.2148610
P 0.0519045 1.5190734 -0.1380900
C 1.9548204 -1.0357525 1.1259186
C 2.7308052 -0.0083042 0.5525994
C 2.2111123 -1.4756964 2.4335819
C 3.7599170 0.5748164 1.3320866
C 3.2326752 -0.8909249 3.1769454
H 1.6183677 -2.2795430 2.8675236
C 4.0043085 0.1372081 2.6398669
H 3.4324149 -1.2391832 4.1915647
H 4.7928600 0.5899590 3.2382542
C 1.4648296 1.2498301 -1.2833522
C 1.4074581 1.7214825 -2.6040021
C 2.5586280 0.4721496 -0.8513668
C 2.4257117 1.4111621 -3.5007587
H 0.5759217 2.3426580 -2.9309027
C 3.5776149 0.1632405 -1.7858286
C 3.5064803 0.6266814 -3.1052750
H 2.3782574 1.7846162 -4.5248818
H 4.2891385 0.3842477 -3.8218633
C -4.2237582 1.6975147 0.5156444
H -4.7070736 2.3219747 1.2858224
H -3.9713412 2.3366760 -0.3438610
C -5.6857144 -2.5990467 -1.2315865
H -4.6885592 -2.7487791 -1.6612145
H -5.8466330 -3.3287751 -0.4267322
H -6.4413983 -2.7427394 -2.0127757
C -0.0198700 -3.1893149 1.1103078
C 0.2947308 -4.4821720 0.6686246
C -0.7950940 -3.0361047 2.2735597
C -0.1489430 -5.5974374 1.3840766
H 0.8788577 -4.6251107 -0.2405557

C -1.2262672 -4.1503587 2.9920580
H -1.0630984 -2.0311672 2.6084997
C -0.9042005 -5.4358190 2.5469364
H 0.0995535 -6.5984375 1.0275382
H -1.8194307 -4.0151224 3.8980879
H -1.2458586 -6.3098208 3.1037755
C 1.1473907 -2.2602160 -1.3846504
C 2.3763071 -2.9361130 -1.4563561
C 0.3984545 -2.0579667 -2.5519310
C 2.8401020 -3.4115491 -2.6829818
H 2.9788156 -3.0714627 -0.5564426
C 0.8718955 -2.5257993 -3.7785590
H -0.5479489 -1.5157472 -2.4886793
C 2.0908326 -3.2050206 -3.8451104
H 3.7929940 -3.9416767 -2.7320424
H 0.2898353 -2.3557669 -4.6857612
H 2.4595934 -3.5723663 -4.8043010
C 0.8194532 2.3253535 1.3174838
C 1.7790691 3.3385020 1.1559160
C 0.4349245 1.9373171 2.6079890
C 2.3298873 3.9623911 2.2749955
H 2.1057021 3.6270030 0.1551691
C 0.9974130 2.5553166 3.7257233
H -0.2879393 1.1268202 2.7244354
C 1.9416663 3.5711598 3.5603506
H 3.0702541 4.7534973 2.1432051
H 0.7025970 2.2384638 4.7273002
H 2.3794920 4.0572301 4.4338668
C -0.9655946 2.8442255 -0.9176839
C -1.0645729 4.1376413 -0.3857265
C -1.7450802 2.5103006 -2.0405850
C -1.9162803 5.0798979 -0.9714556
H -0.4827925 4.4151824 0.4933880
C -2.5772099 3.4580745 -2.6349018
H -1.7102198 1.4933590 -2.4356965
C -2.6674430 4.7473017 -2.0991284
H -1.9863845 6.0805138 -0.5417326
H -3.1634434 3.1868058 -3.5147245
H -3.3245173 5.4873964 -2.5585929
O 4.4530702 1.5770744 0.7292202
O 4.5879046 -0.6139700 -1.3130121
C 5.6522075 -0.9503603 -2.2021378
H 6.3431080 -1.5661687 -1.6160209
H 5.2846743 -1.5306542 -3.0644966
H 6.1768342 -0.0494260 -2.5595043
C 5.5049285 2.2040955 1.4616587
H 5.9187044 2.9652957 0.7911752
H 5.1220702 2.6887710 2.3749109
H 6.2940725 1.4826237 1.7286660

Ts0_IS.xyz				H	-2.1137955	-0.7892498	2.1879028
98				C	-2.4183234	-4.5782280	1.4084834
Energy = -2817.813326731				H	-0.9230163	-4.2382768	-0.1063158
Rh	-1.3395639	0.5588740	-0.3145181	C	-3.1991464	-4.0162566	2.4210756
P	-0.2585004	-1.2917597	0.0506545	H	-3.6936404	-2.2034806	3.4951691
P	0.5677161	1.7219159	-0.3506499	H	-2.5055213	-5.6409553	1.1761031
C	0.1456049	3.2831862	-1.2254804	H	-3.8954725	-4.6392375	2.9849523
C	0.5224765	4.5537482	-0.7661230	C	1.2465399	-1.2114179	1.1019297
C	-0.6925164	3.1858930	-2.3531670	C	1.1899590	-1.6263593	2.4421766
C	0.0765729	5.7015821	-1.4257571	C	2.4195365	-0.6258992	0.5848021
H	1.1562808	4.6534443	0.1152964	C	2.2966596	-1.4582526	3.2697321
C	-1.1301508	4.3342304	-3.0123802	H	0.2872504	-2.0900632	2.8365386
H	-1.0085484	2.2003319	-2.7056987	C	3.5255607	-0.4479959	1.4523817
C	-0.7474355	5.5960625	-2.5484321	C	3.4618017	-0.8653514	2.7880025
H	0.3758938	6.6841145	-1.0571554	H	2.2527546	-1.7906050	4.3081309
H	-1.7752212	4.2423611	-3.8876795	H	4.3124873	-0.7281654	3.4531489
H	-1.0930586	6.4956887	-3.0600522	O	4.6054430	0.1663791	0.9037266
C	1.8655413	0.9123190	-1.3701204	O	4.0643856	-1.9725295	-1.1049419
C	2.5594551	-0.1911642	-0.8356744	C	5.7533980	0.3748999	1.7258902
C	2.0759376	1.3091323	-2.6991428	H	6.4905785	0.8687173	1.0835008
C	3.4535827	-0.8996921	-1.6744912	H	5.5170860	1.0274691	2.5824437
C	2.9667384	0.6018325	-3.5020050	H	6.1656627	-0.5800447	2.0899778
H	1.5524114	2.1733751	-3.1045391	C	4.9826002	-2.7239216	-1.8980306
C	3.6511195	-0.5049814	-3.0035592	H	5.3510332	-3.5233594	-1.2458280
H	3.1317179	0.9150839	-4.5340960	H	4.4832088	-3.1669824	-2.7753168
H	4.3359061	-1.0518674	-3.6491614	H	5.8296406	-2.1017232	-2.2295151
C	1.4659964	2.2440602	1.1599395	C	-6.1488723	-1.0762027	1.2167684
C	2.7254200	2.8604855	1.0777365	C	-5.9902758	0.2070794	1.6496671
C	0.8880355	2.0216913	2.4172930	C	-4.6225551	-0.0925651	-0.1193867
C	3.3802787	3.2695767	2.2394851	N	-5.3092394	-1.2384554	0.1299955
H	3.2006354	3.0034501	0.1053824	H	-6.7847314	-1.8740647	1.5807920
C	1.5506246	2.4214365	3.5784916	H	-6.4722131	0.7500922	2.4539475
H	-0.0705638	1.5002399	2.4735657	N	-5.0520877	0.7918303	0.8183675
C	2.7941702	3.0517004	3.4902927	C	-4.5610555	2.1681385	0.9230499
H	4.3553107	3.7549355	2.1683838	H	-5.2516511	2.6951383	1.5996400
H	1.1003598	2.2322777	4.5542217	H	-4.6366289	2.6434645	-0.0647743
H	3.3113191	3.3682807	4.3976025	C	-3.1571119	2.2699204	1.4499258
C	0.2761536	-2.2590012	-1.4106691	H	-2.9182970	1.6596167	2.3264977
C	1.1599330	-3.3425119	-1.2723029	C	-2.2739274	3.1643019	0.9812551
C	-0.2164598	-1.9245483	-2.6797494	H	-2.5054178	3.8016256	0.1248878
C	1.5307462	-4.0877072	-2.3916762	H	-1.3142613	3.3268818	1.4684907
H	1.5766734	-3.5880077	-0.2938348	C	-5.1172922	-2.4885984	-0.5954907
C	0.1669039	-2.6661809	-3.7979936	B	-3.5125932	0.1306460	-1.2247471
H	-0.8854451	-1.0669233	-2.7793569	H	-3.8082904	-0.3993203	-2.2762027
C	1.0374253	-3.7494923	-3.6553044	H	-3.2098752	1.3119886	-1.3770480
H	2.2146092	-4.9306739	-2.2772122	H	-2.5152162	-0.6285135	-0.8929276
H	-0.2114158	-2.3935548	-4.7844429	H	-4.2949574	-3.0617373	-0.1458306
H	1.3358550	-4.3292927	-4.5304197	H	-6.0422797	-3.0740880	-0.5505554
C	-1.3953962	-2.4195805	0.9711010	H	-4.8725418	-2.2613288	-1.6382127
C	-2.1945160	-1.8601768	1.9837262				
C	-1.5199065	-3.7866063	0.6863073				
C	-3.0845287	-2.6522204	2.7084629				

Ts0_IIS.xyz				H	0.5445160	-2.5584018	2.2205501
98				C	3.0733298	-4.6292555	0.1324757
Energy =				H	3.1184802	-2.9543619	-1.2204886
Rh	-0.9535348	-0.9199743	-0.2173308	C	2.5534830	-5.1568103	1.3140319
P	1.2232871	-0.9285512	-0.0998332	H	1.2389793	-4.8072799	2.9969990
P	-0.9903889	1.3096282	-0.1223800	H	3.7679740	-5.2155070	-0.4713195
C	-2.6041486	1.8503875	-0.8191199	H	2.8433906	-6.1559869	1.6429735
C	-3.5085308	2.6575217	-0.1135195	C	2.0226638	0.2806194	1.0313252
C	-2.9685907	1.3657469	-2.0892147	C	2.5057644	-0.1484109	2.2786774
C	-4.7441068	2.9892876	-0.6762345	C	2.0281573	1.6519075	0.7011304
H	-3.2521036	3.0299217	0.8786364	C	2.9753151	0.7777478	3.2044867
C	-4.1929606	1.7166034	-2.6564717	H	2.5330778	-1.2085473	2.5214851
H	-2.2890053	0.7014606	-2.6280869	C	2.4901311	2.5769754	1.6714734
C	-5.0852277	2.5292022	-1.9497339	C	2.9572584	2.1405010	2.9170522
H	-5.4394424	3.6165843	-0.1159879	H	3.3586412	0.4353480	4.1670066
H	-4.4564703	1.3461619	-3.6484154	H	3.3118977	2.8542107	3.6583932
H	-6.0469773	2.7982328	-2.3892274	O	2.4237762	3.8853886	1.3095651
C	0.2815649	2.2291809	-1.0778424	O	3.8906663	2.6597194	-0.9783599
C	1.6154797	2.1975238	-0.6263255	C	2.8817863	4.8662947	2.2393954
C	-0.0423082	2.8456426	-2.2958219	H	2.7416733	5.8323396	1.7423249
C	2.6195077	2.7651824	-1.4495724	H	2.2897099	4.8427493	3.1691963
C	0.9595387	3.4139148	-3.0771772	H	3.9489919	4.7274174	2.4768698
H	-1.0767184	2.8939333	-2.6304276	C	4.9477525	3.2129289	-1.7613840
C	2.2910275	3.3660223	-2.6705566	H	5.8668634	3.0140420	-1.1994444
H	0.7021754	3.8986355	-4.0202130	H	5.0094073	2.7278934	-2.7494865
H	3.0644157	3.8009760	-3.3010123	H	4.8251560	4.3004838	-1.8910904
C	-0.9202203	2.0774835	1.5421005	C	-4.1332933	-5.5522889	0.6267827
C	-0.8000025	3.4684537	1.6917558	C	-4.3222979	-4.5075824	1.4809175
C	-0.9897791	1.2648920	2.6816374	C	-2.7388520	-3.8942615	-0.0114500
C	-0.7642053	4.0330252	2.9669814	N	-3.1604587	-5.1618873	-0.2743732
H	-0.7147076	4.1070904	0.8106476	H	-4.6019318	-6.5282285	0.5874103
C	-0.9431755	1.8311621	3.9560536	H	-4.9909172	-4.3938675	2.3257341
H	-1.0438507	0.1808548	2.5485083	N	-3.4571059	-3.5043997	1.0836700
C	-0.8340432	3.2164931	4.0999277	C	-3.2972968	-2.2367120	1.7903220
H	-0.6737962	5.1151978	3.0768488	H	-2.2173855	-2.0768717	1.9643049
H	-0.9818441	1.1904241	4.8385680	H	-3.7681740	-2.3546697	2.7788904
H	-0.7977927	3.6608536	5.0960002	C	-3.8639511	-1.0332607	1.0876803
C	2.0642990	-0.6712432	-1.7069812	H	-3.6964431	-0.0924410	1.6205367
C	3.4491131	-0.4419368	-1.7553976	C	-4.5388554	-1.0356724	-0.0647238
C	1.3299588	-0.7412984	-2.8982532	H	-4.7228400	-1.9532471	-0.6263209
C	4.0862414	-0.2869000	-2.9864001	H	-4.9198209	-0.1089832	-0.4924297
H	4.0247058	-0.3675766	-0.8311550	C	-2.6180402	-6.0156875	-1.3282389
C	1.9700815	-0.5715455	-4.1265688	B	-1.6534590	-3.0809229	-0.8260889
H	0.2528083	-0.9174931	-2.8449087	H	-1.0275078	-3.7875614	-1.5794206
C	3.3478293	-0.3455374	-4.1721890	H	-2.1570594	-2.1221755	-1.4494470
H	5.1634511	-0.1141931	-3.0190484	H	-0.8293473	-2.6799292	0.0771333
H	1.3910698	-0.6149142	-5.0503873	H	-1.5524938	-6.2021281	-1.1468767
H	3.8479670	-0.2148614	-5.1333132	H	-3.1636865	-6.9651973	-1.3198145
C	1.8085398	-2.5831161	0.4633549	H	-2.7319378	-5.5326908	-2.3049629
C	1.2744454	-3.1308876	1.6437331				
C	2.7080335	-3.3477970	-0.2910276				
C	1.6527042	-4.4011939	2.0723075				

TsI_IIS.xyz				H	0.7670285	-2.1233558	3.0114198
98				C	2.9644987	-4.7964085	1.2547224
Energy = -2817.813667560				H	3.0212242	-3.4483703	-0.4257438
Rh -0.9239923	-1.2463406	0.6474607		C	2.4999404	-5.0208892	2.5512860
P 1.3226055	-1.1131458	0.3388530		H	1.3477949	-4.2203895	4.1982974
P -1.0952678	0.9863348	0.3850503		H	3.5733741	-5.5501740	0.7530572
C -2.8210487	1.2571579	-0.1966342		H	2.7464079	-5.9492954	3.0686855
C -3.7051297	2.1483923	0.4281533		C	2.0848013	0.3084764	1.2241158
C -3.2985572	0.4498870	-1.2460550		C	2.7262009	0.1422450	2.4604375
C -5.0335053	2.2405464	0.0021843		C	1.9644083	1.5889730	0.6485488
H -3.3643680	2.7697338	1.2563260		C	3.2377470	1.2519982	3.1302886
C -4.6204549	0.5544244	-1.6757589		H	2.8475397	-0.8506424	2.8896050
H -2.6262830	-0.2712118	-1.7149020		C	2.4767502	2.7030874	1.3560411
C -5.4937353	1.4502726	-1.0516478		C	3.1114726	2.5311027	2.5932811
H -5.7092722	2.9380135	0.4997645		H	3.7459733	1.1190709	4.0867147
H -4.9727304	-0.0716698	-2.4973693		H	3.5082382	3.3866439	3.1369058
H -6.5298674	1.5294230	-1.3843237		O	2.2896143	3.9093367	0.7616377
C -0.0181882	1.6500296	-0.9550767		O	3.5213511	2.3357235	-1.4376232
C 1.3577845	1.8133079	-0.6951686		C	2.7766606	5.0735352	1.4283019
C -0.5334426	1.9158038	-2.2328293		H	2.5198177	5.9157370	0.7766535
C 2.2051167	2.2281225	-1.7516835		H	2.2877180	5.2054895	2.4074537
C 0.3185422	2.3312429	-3.2538731		H	3.8698783	5.0328526	1.5608545
H -1.5993585	1.8194516	-2.4289669		C	4.4320952	2.7256056	-2.4651711
C 1.6842097	2.4822464	-3.0271070		H	5.4202661	2.7407041	-1.9926540
H -0.0880248	2.5440829	-4.2439397		H	4.4332477	1.9976608	-3.2927516
H 2.3357411	2.7984226	-3.8396573		H	4.1956332	3.7301183	-2.8517922
C -0.8427644	2.2090543	1.7288073		C	-4.9637477	-3.2172329	-2.0609196
C -0.9380666	3.5828493	1.4482166		C	-5.1189409	-3.1133514	-0.7124074
C -0.5255095	1.7951087	3.0285933		C	-2.9061132	-3.0771747	-1.1394028
C -0.7552838	4.5201684	2.4645083		N	-3.6024674	-3.1937713	-2.3046046
H -1.1418070	3.9196631	0.4299641		H	-5.6948319	-3.3012819	-2.8561499
C -0.3297703	2.7349558	4.0407999		H	-6.0120865	-3.0979850	-0.0997050
H -0.3864189	0.7339375	3.2333008		N	-3.8482792	-3.0227792	-0.1670922
C -0.4546305	4.0980328	3.7630418		C	-3.6075736	-3.0585563	1.2847553
H -0.8381038	5.5846920	2.2388565		H	-3.5063712	-4.1166726	1.5679997
H -0.0682544	2.4015395	5.0461363		H	-4.5348011	-2.6865408	1.7439560
H -0.3087084	4.8332140	4.5562558		C	-2.4187729	-2.3014818	1.8468098
C 2.2769514	-1.1203501	-1.2310431		H	-1.7454648	-2.9508845	2.4159036
C 3.6690899	-0.9299315	-1.1783697		C	-2.4472944	-0.9492357	2.2218093
C 1.6555026	-1.3152915	-2.4697996		H	-3.2912199	-0.3191647	1.9299310
C 4.4241312	-0.9522310	-2.3501290		H	-1.9200924	-0.6233140	3.1171577
H 4.1615706	-0.7543460	-0.2202342		C	-2.9767706	-3.2462863	-3.6190145
C 2.4136636	-1.3224542	-3.6420982		B	-1.3319585	-2.9113817	-1.1072462
H 0.5765857	-1.4533108	-2.5140416		H	-0.7607128	-3.8938486	-1.5472975
C 3.7975208	-1.1456130	-3.5851900		H	-1.0656971	-1.9675650	-1.8286933
H 5.5049422	-0.8097352	-2.2988058		H	-0.7916101	-2.9429831	0.0778500
H 1.9192663	-1.4655956	-4.6043346		H	-2.2328044	-4.0516466	-3.6459546
H 4.3896453	-1.1583247	-4.5019477		H	-3.7499596	-3.4309957	-4.3721557
C 1.8719150	-2.6291634	1.2166986		H	-2.4689331	-2.2958141	-3.8327014
C 1.3947867	-2.8698878	2.5198905					
C 2.6553578	-3.6078258	0.5885459					
C 1.7144363	-4.0525704	3.1841786					

TsII_IIIS.xyz

98

Energy = -2817.806626670

Rh -1.2871800 0.5296472 -0.2910907
H -2.4437797 -0.5136917 -0.5476964
H -2.5235694 1.4983334 1.5696702
B -3.0827572 0.5607074 1.0204733
H -3.2410894 -0.4299296 1.6815129
C -6.4096934 1.0720943 -0.7213861
C -5.7080112 2.1631201 -1.1504524
H -7.4207144 0.7507344 -0.9420174
H -5.9875981 2.9660762 -1.8222717
C -4.3710769 0.9886077 0.2338868
N -4.4682454 2.0947531 -0.5517706
N -5.5742989 0.3611244 0.1197925
C -2.1267904 2.3583423 -1.3387667
C -2.1600700 1.2137202 -2.1437216
H -3.1066779 0.7211976 -2.3728412
H -1.3602677 1.0424205 -2.8701034
H -1.3061243 3.0664026 -1.4643030
P -0.4022951 -1.5436702 0.2874104
P 0.7882696 1.7129910 0.0333598
C 1.2842831 -1.6563153 1.0372395
C 2.3778776 -1.0545667 0.3812438
C 1.4803050 -2.3104783 2.2638903
C 3.6476007 -1.0845534 1.0043877
C 2.7435266 -2.3451858 2.8477628
H 0.6503667 -2.8067158 2.7617087
C 3.8291434 -1.7238817 2.2358841
H 2.8846088 -2.8606262 3.7990613
H 4.8061584 -1.7439312 2.7153752
C 1.7091750 0.7941224 -1.2584566
C 1.6099869 1.2552199 -2.5863069
C 2.2890027 -0.4580764 -0.9843799
C 2.1221446 0.4919739 -3.6293474
H 1.1305865 2.2105046 -2.8011277
C 2.8280909 -1.2054510 -2.0631670
C 2.7390894 -0.7334371 -3.3780376
H 2.0464460 0.8550379 -4.6555986
H 3.1382667 -1.3167512 -4.2057073
C -3.3495856 3.0146179 -0.7395969
H -3.1053615 3.4640909 0.2351571
H -3.7056053 3.8257351 -1.3948985
C -1.4707058 -2.5373347 1.4007426
C -2.1723939 -3.6573708 0.9337223
C -1.6878335 -2.1009208 2.7191391
C -3.0593246 -4.3365388 1.7739428
H -2.0273658 -4.0066436 -0.0890194
C -2.5572454 -2.7920334 3.5616623
H -1.1786124 -1.2093561 3.0890975
C -3.2485252 -3.9116503 3.0900906
H -3.5943472 -5.2100132 1.3972726

H -2.7049803 -2.4463240 4.5859925
H -3.9323059 -4.4505354 3.7479180
C -0.2116022 -2.6077360 -1.2011318
C 0.5562176 -3.7813483 -1.1170168
C -0.8417369 -2.2859172 -2.4101331
C 0.6774323 -4.6204920 -2.2242312
H 1.0645224 -4.0356032 -0.1856539
C -0.7084957 -3.1218262 -3.5204940
H -1.4314648 -1.3716810 -2.4738176
C 0.0491352 -4.2911921 -3.4292183
H 1.2698963 -5.5337925 -2.1463648
H -1.1975780 -2.8572970 -4.4594541
H 0.1498923 -4.9475470 -4.2953411
C 1.0129616 3.5006810 -0.3278876
C 0.1031122 4.3768972 0.2873099
C 2.0850940 4.0344434 -1.0582658
C 0.2542515 5.7579452 0.1665919
H -0.7181720 3.9679383 0.8818705
C 2.2290266 5.4180075 -1.1850893
H 2.8132237 3.3722349 -1.5286829
C 1.3154412 6.2815283 -0.5769354
H -0.4554521 6.4270443 0.6559560
H 3.0652320 5.8219848 -1.7581868
H 1.4332530 7.3614928 -0.6770718
C 1.6709727 1.6356930 1.6367044
C 2.9978894 2.0764060 1.7595784
C 0.9586231 1.2527887 2.7801042
C 3.6071622 2.1084250 3.0121484
H 3.5563066 2.3885756 0.8757374
C 1.5722372 1.2884495 4.0340106
H -0.0808702 0.9314439 2.6809185
C 2.8965369 1.7136375 4.1508484
H 4.6392444 2.4518108 3.1034081
H 1.0126614 0.9865791 4.9208203
H 3.3752860 1.7457538 5.1308070
O 3.4024769 -2.3879445 -1.7223810
O 4.6375109 -0.4367408 0.3324437
C 5.9478344 -0.4403094 0.8996130
H 6.5748669 0.1220171 0.1992550
H 5.9591386 0.0569171 1.8835081
H 6.3389761 -1.4656928 1.0001670
C 3.9520517 -3.1965395 -2.7627140
H 4.3557281 -4.0840451 -2.2633266
H 3.1751650 -3.5031789 -3.4816310
H 4.7645026 -2.6720713 -3.2911456
C -5.9434471 -0.8790655 0.7955037
H -5.0333120 -1.3638151 1.1624281
H -6.6080141 -0.6662653 1.6434077
H -6.4560113 -1.5393096 0.0854099

TsIII_IVS.xyz

98

Energy = -2817.807631559

Rh -1.2351188 0.3128552 -0.6568606
H -2.1507865 -0.8230658 -1.3879826
H -2.4017824 1.9202202 1.3671882
B -2.6256790 0.7697040 1.0502347
H -2.4136860 -0.0371509 1.9196302
C -6.1072265 0.0523852 -0.2873775
C -5.7274959 1.1248695 -1.0436957
H -7.0272826 -0.5199586 -0.2829443
H -6.2460220 1.6532237 -1.8351461
C -4.0370372 0.6520567 0.3754255
N -4.4670108 1.4831736 -0.6147340
N -5.0589462 -0.2260193 0.5720178
C -2.3662415 1.7406151 -1.8558032
C -2.5208234 0.4322772 -2.4112092
H -3.5179312 -0.0159510 -2.4565955
H -1.8958710 0.1554247 -3.2655488
H -1.6644139 2.4280784 -2.3342033
P -0.2030715 -1.6083629 0.2028697
P 0.4078575 1.7863048 0.0110855
C 1.3907976 -1.4391815 1.1223683
C 2.4107138 -0.6553643 0.5455539
C 1.6067849 -2.0623631 2.3609200
C 3.6142848 -0.4619535 1.2623754
C 2.8074415 -1.8741577 3.0405471
H 0.8460171 -2.7073793 2.7946866
C 3.8077097 -1.0618157 2.5119705
H 2.9657791 -2.3640647 4.0026010
H 4.7314209 -0.9089822 3.0671221
C 1.5475361 1.0112881 -1.1992325
C 1.4444656 1.3973320 -2.5529446
C 2.3232038 -0.1090642 -0.8404266
C 2.1514947 0.7064289 -3.5309763
H 0.8148998 2.2408450 -2.8348588
C 3.0476094 -0.7861025 -1.8544511
C 2.9616484 -0.3766132 -3.1912134
H 2.0757888 1.0146498 -4.5749995
H 3.5077520 -0.9069893 -3.9692171
C -3.5603250 2.4441986 -1.2370922
H -3.2383055 3.1701601 -0.4780936
H -4.1361569 2.9924803 -1.9994444
C -1.2780184 -2.6566714 1.2608338
C -1.9470268 -3.7578719 0.7031140
C -1.5350882 -2.3197823 2.6019397
C -2.8313466 -4.5173689 1.4723295
H -1.7671851 -4.0346385 -0.3366240
C -2.4081686 -3.0899214 3.3726428
H -1.0446606 -1.4586304 3.0549046
C -3.0587107 -4.1917317 2.8113331
H -3.3318526 -5.3773467 1.0240356

H -2.5798037 -2.8244282 4.4172282
H -3.7362267 -4.7959201 3.4167368
C 0.3195391 -2.7693933 -1.1326272
C 1.1175115 -3.8788011 -0.8043986
C -0.0507533 -2.5707690 -2.4679064
C 1.5133185 -4.7791809 -1.7917166
H 1.4335760 -4.0357148 0.2283137
C 0.3555033 -3.4673506 -3.4595955
H -0.6521420 -1.7029865 -2.7369968
C 1.1332790 -4.5758340 -3.1226284
H 2.1251652 -5.6417518 -1.5222692
H 0.0635366 -3.2961022 -4.4969642
H 1.4463162 -5.2808807 -3.8946281
C 0.3001754 3.5688318 -0.4106631
C -0.7735996 4.2807365 0.1497593
C 1.2699708 4.2661235 -1.1476129
C -0.8891543 5.6570092 -0.0437285
H -1.5049931 3.7519927 0.7646108
C 1.1468973 5.6437217 -1.3442417
H 2.1278931 3.7394311 -1.5668746
C 0.0671108 6.3409981 -0.7991216
H -1.7248073 6.1983755 0.4031144
H 1.9057569 6.1743179 -1.9217475
H -0.0233354 7.4172750 -0.9530899
C 1.2057087 1.9090336 1.6529723
C 2.4042391 2.6231526 1.8110839
C 0.5602938 1.3752829 2.7750244
C 2.9612855 2.7744043 3.0792373
H 2.9048604 3.0561717 0.9436655
C 1.1205877 1.5340310 4.0439820
H -0.3851154 0.8462800 2.6479301
C 2.3215723 2.2289618 4.1973574
H 3.8936579 3.3293261 3.1981748
H 0.6144089 1.1159943 4.9156286
H 2.7566965 2.3552474 5.1900409
O 3.7834659 -1.8461980 -1.4349067
O 4.5248155 0.3455163 0.6559542
C 5.7621779 0.5847865 1.3275158
H 6.3328343 1.2482213 0.6687170
H 5.5991862 1.0814673 2.2979831
H 6.3231316 -0.3513027 1.4805804
C 4.4981490 -2.6046945 -2.4117975
H 4.9986319 -3.4034836 -1.8540712
H 3.8115158 -3.0497968 -3.1495502
H 5.2531010 -1.9877211 -2.9253236
C -5.0587046 -1.3092853 1.5477167
H -5.2022147 -2.2700406 1.0371098
H -4.0916197 -1.3168977 2.0576373
H -5.8616861 -1.1567935 2.2805610

TsIV_VS.xyz

98

Energy = -2817.815582085

Rh	1.7655691	0.2406750	-0.0137348
H	3.9358954	0.4387424	-0.9177908
H	0.8260313	2.9234350	0.4957440
B	1.7852744	2.2276732	0.7463889
H	2.6852044	2.3571810	-0.0796603
C	2.4152312	3.2277758	4.3350251
C	3.1809829	2.1007473	4.2684296
H	2.2397852	3.9188563	5.1510397
H	3.7876851	1.6103877	5.0203929
C	2.2272273	2.3850734	2.2489466
N	3.0533058	1.6017506	2.9890904
N	1.8362956	3.3870994	3.0935654
C	3.4555523	-0.1231894	1.1580638
C	4.4137136	0.4050145	0.0958525
H	4.7457622	1.4326473	0.2954334
H	5.2918720	-0.2475116	-0.0415407
H	3.5000884	-1.2234237	1.1811305
P	0.4310328	0.4864528	-1.9434214
P	0.1981247	-0.7341385	1.1831091
C	-1.3651778	0.7236674	-1.6561261
C	-2.0854100	-0.3181089	-1.0365059
C	-1.9814521	1.9561529	-1.9171790
C	-3.4385332	-0.0850123	-0.6841884
C	-3.3114717	2.1606841	-1.5589508
H	-1.4268901	2.7503858	-2.4145933
C	-4.0436950	1.1519226	-0.9370736
H	-3.7888609	3.1188149	-1.7710645
H	-5.0804561	1.3298305	-0.6574347
C	-0.6361463	-2.0619403	0.2036602
C	-0.3125774	-3.4146938	0.4020913
C	-1.5505317	-1.6974299	-0.8106217
C	-0.8581693	-4.3999323	-0.4145238
H	0.3371902	-3.7131843	1.2191323
C	-2.0854154	-2.7224347	-1.6337986
C	-1.7285982	-4.0625963	-1.4466095
H	-0.6021669	-5.4468037	-0.2443912
H	-2.1365469	-4.8415025	-2.0880616
C	3.6998812	0.3358968	2.5771061
H	3.3405789	-0.4236065	3.2843908
H	4.7797890	0.4712645	2.7666818
C	0.9515281	4.4908018	2.7335386
H	1.3267179	5.0027359	1.8407197
H	-0.0602534	4.1157954	2.5360285
H	0.9199147	5.1959185	3.5710414
C	0.9016542	-1.5210418	2.7001469
C	0.6195404	-0.9883088	3.9691757
C	1.8618994	-2.5469156	2.6075316
C	1.2602677	-1.4791838	5.1095129
H	-0.1029008	-0.1790927	4.0733083

C	2.4853112	-3.0503894	3.7488526
H	2.1491986	-2.9448880	1.6339490
C	2.1879855	-2.5168318	5.0064903
H	1.0240997	-1.0489092	6.0842589
H	3.2161287	-3.8549808	3.6529478
H	2.6804100	-2.9068973	5.8984343
C	-1.2525437	0.1679344	1.8689247
C	-2.2326164	-0.5920756	2.5318408
C	-1.4134962	1.5524581	1.7637820
C	-3.3394961	0.0353707	3.1011341
H	-2.1324527	-1.6768354	2.5989449
C	-2.5320305	2.1753280	2.3211640
H	-0.6754199	2.1320027	1.2125903
C	-3.4925431	1.4213968	2.9978040
H	-4.0903337	-0.5631229	3.6198082
H	-2.6621881	3.2536453	2.2104409
H	-4.3638071	1.9095354	3.4378169
C	0.5179177	-1.0021645	-3.0099643
C	-0.3772519	-1.1960038	-4.0737765
C	1.5191192	-1.9549691	-2.7740791
C	-0.2638446	-2.3230274	-4.8876224
H	-1.1696387	-0.4681852	-4.2567301
C	1.6249520	-3.0878135	-3.5817930
H	2.2159135	-1.8132801	-1.9422152
C	0.7333956	-3.2715826	-4.6412821
H	-0.9576771	-2.4618965	-5.7187432
H	2.4024448	-3.8273040	-3.3844003
H	0.8170925	-4.1540938	-5.2776616
C	0.9687838	1.8458637	-3.0599143
C	1.3803829	1.6069112	-4.3810952
C	1.0478108	3.1564026	-2.5539967
C	1.8401239	2.6561277	-5.1803885
H	1.3489351	0.5988249	-4.7933893
C	1.4951235	4.2022706	-3.3602024
H	0.7713440	3.3569121	-1.5193661
C	1.8929984	3.9562879	-4.6768640
H	2.1574915	2.4509289	-6.2040963
H	1.5420969	5.2139466	-2.9534227
H	2.2497413	4.7741931	-5.3047238
O	-4.0751538	-1.1275697	-0.0859542
O	-2.9443857	-2.3044115	-2.5999910
C	-5.4442805	-0.9621763	0.2786848
H	-5.7483784	-1.9154742	0.7247892
H	-5.5656707	-0.1557294	1.0206287
H	-6.0722585	-0.7523178	-0.6022719
C	-3.5380487	-3.2867780	-3.4481704
H	-4.1892869	-2.7309681	-4.1315422
H	-2.7735314	-3.8278785	-4.0293949
H	-4.1408088	-4.0051179	-2.8692421

TsV_VIS.xyz

98

Energy = -2817.803423396

Rh -1.3315235 0.0072872 -0.3416420
H -2.4698314 0.4752511 -2.8830948
H -2.7917071 -0.4484706 1.7461913
B -3.1133639 -0.3455246 0.5745626
H -2.6329479 -1.2123186 -0.2965979
C -6.9066486 -0.2982867 0.5916221
C -6.5712770 0.9549257 0.1565659
H -7.8758064 -0.7488122 0.7718441
H -7.1911630 1.8059236 -0.0992630
C -4.6748450 -0.2041655 0.4453037
N -5.1949809 0.9789196 0.0732092
N -5.7225170 -0.9970218 0.7715609
C -3.0230722 1.3955588 -0.9835122
C -3.3699393 0.8246120 -2.3567203
H -4.0543622 -0.0352602 -2.2938653
H -3.8538077 1.5882845 -2.9952277
H -2.3296123 2.2335190 -1.0942571
P 0.2259500 -1.6561370 -0.1658071
P 0.2605492 1.6180654 -0.1259299
C 1.4765764 -1.4168035 1.1627905
C 2.4642336 -0.4276686 0.9871764
C 1.3718803 -2.0990357 2.3850018
C 3.3175156 -0.1205946 2.0756071
C 2.2259690 -1.7842984 3.4380787
H 0.6351617 -2.8889552 2.5137760
C 3.1895734 -0.7883816 3.2993294
H 2.1408336 -2.3225492 4.3834438
H 3.8426864 -0.5465545 4.1358473
C 1.9104669 1.2558657 -0.8755783
C 2.3066812 1.9012174 -2.0585892
C 2.7310048 0.2570867 -0.3130033
C 3.4911570 1.5444951 -2.6950525
H 1.7030716 2.7015899 -2.4790785
C 3.9267929 -0.0982341 -0.9879086
C 4.3003198 0.5371938 -2.1770123
H 3.7886100 2.0578095 -3.6107951
H 5.2171662 0.2585559 -2.6932173
C -4.2446973 2.0278972 -0.3233465
H -3.9701626 2.6106417 0.5689443
H -4.7697118 2.6979454 -1.0257010
C -5.6087970 -2.3804339 1.2197814
H -6.1120860 -3.0502227 0.5106309
H -4.5473136 -2.6480105 1.2704583
H -6.0610044 -2.4915840 2.2137588
C -0.2132593 3.2353256 -0.8777821
C -0.3055722 4.4194091 -0.1334738
C -0.5851119 3.2609355 -2.2362669
C -0.7331118 5.6050451 -0.7390945
H -0.0466805 4.4226056 0.9252674

C -0.9984278 4.4466472 -2.8411382
H -0.5651630 2.3374568 -2.8199117
C -1.0720394 5.6251408 -2.0922621
H -0.7971654 6.5180996 -0.1448702
H -1.2724587 4.4480767 -3.8974083
H -1.4000429 6.5534911 -2.5623791
C 0.6519305 2.0354978 1.6146638
C 1.7540934 2.8525498 1.9158819
C -0.1619013 1.5605045 2.6511932
C 2.0280372 3.1936181 3.2400495
H 2.4059958 3.2082125 1.1161985
C 0.1239814 1.8939645 3.9760010
H -1.0068047 0.9135404 2.4051027
C 1.2166377 2.7122247 4.2719498
H 2.8822800 3.8339453 3.4671287
H -0.5067109 1.5105913 4.7797523
H 1.4379403 2.9751679 5.3077842
C 1.2032200 -2.0709394 -1.6558900
C 2.3007393 -2.9439181 -1.5817879
C 0.8278226 -1.5335541 -2.8944906
C 3.0067128 -3.2753426 -2.7378749
H 2.6093874 -3.3516092 -0.6175462
C 1.5437851 -1.8588164 -4.0475487
H -0.0237922 -0.8494590 -2.9398310
C 2.6320487 -2.7311599 -3.9704741
H 3.8545718 -3.9600031 -2.6763683
H 1.2527117 -1.4295131 -5.0074670
H 3.1899249 -2.9883990 -4.8724110
C -0.6307712 -3.2379038 0.2523486
C -0.5247252 -4.3754756 -0.5597350
C -1.4681518 -3.2908410 1.3818380
C -1.2322554 -5.5403922 -0.2459806
H 0.1055473 -4.3580842 -1.4485825
C -2.1559374 -4.4597749 1.7036278
H -1.5899609 -2.4058295 2.0080412
C -2.0427856 -5.5903870 0.8873832
H -1.1420869 -6.4130939 -0.8947685
H -2.7795945 -4.4907035 2.5996202
H -2.5843474 -6.5044007 1.1361329
O 4.2358126 0.8547576 1.8410806
O 4.6498194 -1.0934708 -0.4080214
C 5.1383947 1.1967729 2.8918654
H 5.7814433 1.9845067 2.4842355
H 4.5992481 1.5827307 3.7726472
H 5.7573026 0.3336924 3.1864056
C 5.8727937 -1.4874841 -1.0286852
H 6.2806512 -2.2845733 -0.3974810
H 5.6982340 -1.8774838 -2.0449934
H 6.5889277 -0.6508921 -1.0719853

VIR.1.xyz

121

Energy = -3226.384437318

Rh -0.0462269 -0.7169601 0.4994739

H -1.8140848 -0.4418499 0.3962287

H -1.8330185 -2.8911093 3.1705779

B -1.9714415 -1.7449099 0.5390724

H -0.8160567 -2.2638298 0.9214952

C -3.3663748 -3.2027219 -2.6935440

C -4.3505158 -3.3390270 -1.7471950

H -3.3609754 -3.4612771 -3.7462325

H -5.3631741 -3.7135777 -1.8313174

C -2.5626587 -2.4114832 -0.7678861

N -3.8200430 -2.8594365 -0.5763557

N -2.2709471 -2.6287012 -2.0712587

C -3.1565551 -2.1251150 1.6078643

C -2.6994833 -3.2238824 2.5820411

H -2.3912964 -4.1328344 2.0405263

H -3.4998811 -3.5072572 3.2832098

H -3.4502280 -1.2404563 2.1930513

P 2.0054895 -1.4689394 0.9421904

P 0.7295287 1.2066102 -0.3104108

C 3.4144600 -0.3106556 1.1605881

C 3.8231594 0.5348034 0.1087530

C 4.0108817 -0.2043432 2.4279017

C 4.8282961 1.4988513 0.3731618

C 5.0095165 0.7370028 2.6556222

H 3.6937744 -0.8595309 3.2370365

C 5.4195268 1.5950232 1.6381935

H 5.4713935 0.8098403 3.6414260

H 6.1901154 2.3380953 1.8361191

C 1.9745344 0.8792833 -1.6291347

C 1.5659904 0.8800338 -2.9728055

C 3.2790445 0.4698131 -1.2817556

C 2.4396451 0.4589566 -3.9706843

H 0.5665932 1.2204924 -3.2398581

C 4.1477898 0.0419848 -2.3171403

C 3.7258722 0.0276850 -3.6522396

H 2.1182962 0.4689982 -5.0136408

H 4.3960580 -0.3030626 -4.4436914

C -4.3710910 -2.5852485 0.7605616

H -4.8552170 -3.4944330 1.1470768

H -5.1305707 -1.7991230 0.6392896

C -1.0051345 -2.2874099 -2.7120208

H -0.3729274 -1.7738468 -1.9679103

H -0.4934494 -3.1945453 -3.0584277

H -1.1864225 -1.6197270 -3.5640770

O 5.1368302 2.3227165 -0.6652651

O 5.3890964 -0.3496758 -1.9180554

C 6.1579157 3.3000166 -0.4702027

H 6.2430715 3.8324691 -1.4238045

H 5.8855172 4.0133744 0.3252133

H 7.1235935 2.8287696 -0.2253050

C 6.3171202 -0.7745598 -2.9151089

H 7.2353960 -1.0280846 -2.3740331

H 5.9505090 -1.6646087 -3.4529345

H 6.5281540 0.0308696 -3.6370479

C -0.6156648 2.1584434 -1.1485931

C -0.7460966 3.5515362 -1.0328933

C -1.5743669 1.4552227 -1.8975341

C -1.8019581 4.2182798 -1.6610737

H -0.0326162 4.1244562 -0.4415206

C -2.6208883 2.1209941 -2.5343413

H -1.5186469 0.3679929 -1.9530311

C -2.7370668 3.5080980 -2.4166251

H -1.8916570 5.3006498 -1.5532639

H -3.3691997 1.5468675 -3.0817121

H -3.5643435 4.0310495 -2.8992314

C 1.4840533 2.4567013 0.7942932

C 2.2642288 3.5094795 0.2897074

C 1.2182703 2.3903445 2.1684692

C 2.7617556 4.4859696 1.1525671

H 2.4975110 3.5533383 -0.7758184

C 1.7228546 3.3662923 3.0299800

H 0.6219553 1.5587069 2.5526133

C 2.4915643 4.4165644 2.5227202

H 3.3649252 5.3037277 0.7536624

H 1.5199227 3.3033202 4.1003509

H 2.8853150 5.1799617 3.1958398

C 1.9185847 -2.3719121 2.5420804

C 2.6738393 -3.5268676 2.7927191

C 1.0627367 -1.8793312 3.5407178

C 2.5736351 -4.1757079 4.0254746

H 3.3393330 -3.9237043 2.0246336

C 0.9692049 -2.5267331 4.7727436

H 0.4612457 -0.9898187 3.3327607

C 1.7241174 -3.6777484 5.0163037

H 3.1617672 -5.0760598 4.2107655

H 0.3008575 -2.1360914 5.5420213

H 1.6472089 -4.1889170 5.9773583

C 2.6119603 -2.7534503 -0.2213769

C 3.9653111 -2.8659851 -0.5677719

C 1.6954483 -3.6921117 -0.7223809

C 4.3894386 -3.8903431 -1.4183081

H 4.6896621 -2.1483578 -0.1830226

C 2.1236014 -4.7184076 -1.5627746

H 0.6433220 -3.6175193 -0.4406275

C 3.4725081 -4.8158773 -1.9191711

H 5.4457224 -3.9677465 -1.6825465

H 1.4044780 -5.4488531 -1.9385244

H 3.8073532 -5.6170022 -2.5800040

C -3.7094724 1.7839404 2.2836568

C -2.7558020 2.3195092 3.0499011

H -2.7450069 2.1777396 4.1311241

H	-1.9442918	2.9107893	2.6174562
C	-3.7258849	1.8914652	0.7896918
H	-2.9734905	2.6133654	0.4400355
H	-3.4947656	0.9230249	0.3241897
H	-4.5158595	1.1954282	2.7346751
N	-5.0362451	2.2746049	0.2599073
C	-5.7046058	3.4351128	0.6164629
C	-6.8605109	3.4561555	-0.1032533
H	-5.3053568	4.1281041	1.3470967
N	-6.8658352	2.3118684	-0.8821723
H	-7.6701926	4.1756947	-0.1251253
C	-7.9296626	1.9122904	-1.7918031
H	-7.5008133	1.6647185	-2.7706319
H	-8.4440425	1.0222135	-1.4056504
H	-8.6422892	2.7383454	-1.8913851
C	-5.7430716	1.5695043	-0.6690429
B	-5.4107307	0.1921065	-1.3879965
H	-5.5089834	0.3531892	-2.6015375
H	-4.2862608	-0.1884441	-1.1027814
H	-6.2574095	-0.6336437	-1.0457843

VIIa.xyz

121

Energy = -3226.385457261

Rh	-0.5471846	-0.2901995	0.4323020
H	-2.5748806	-0.4639735	-0.2862489
H	-2.5271169	-2.6685112	2.6319178
B	-2.3974891	-1.6755610	-0.0856592
H	-1.3247862	-1.8758646	0.6304731
C	-2.3959022	-3.5250507	-3.4311352
C	-3.4273050	-4.0539552	-2.6995782
H	-2.0482354	-3.7571425	-4.4312773
H	-4.1528946	-4.8185422	-2.9504896
C	-2.3984978	-2.4985031	-1.4429137
N	-3.4007228	-3.4047079	-1.4856271
N	-1.7811777	-2.5640820	-2.6455929
C	-3.5820555	-2.4948505	0.7340228
C	-3.0198848	-3.3223707	1.8991620
H	-2.2628577	-4.0439035	1.5494561
H	-3.8048818	-3.8915115	2.4225615
H	-4.3312636	-1.7996569	1.1378308
P	1.3027403	-1.4859152	0.5078618
P	0.4915339	1.5565791	-0.2164653
C	2.9444313	-0.6412086	0.5307865
C	3.3588963	0.2399970	-0.4924185
C	3.7506362	-0.8174914	1.6689964
C	4.5796522	0.9444270	-0.3225430
C	4.9551988	-0.1351005	1.7978202
H	3.4309970	-1.4878417	2.4637213
C	5.3760593	0.7514071	0.8105951
H	5.5708076	-0.2864059	2.6858575
H	6.3106406	1.2956905	0.9332375

C	1.3966077	1.2339257	-1.7863132
C	0.8010252	1.5724579	-3.0121526
C	2.6057086	0.5086966	-1.7553808
C	1.3905339	1.1756037	-4.2089164
H	-0.1229532	2.1488223	-3.0299343
C	3.1848510	0.1164909	-2.9880973
C	2.5731090	0.4376413	-4.2068689
H	0.9277003	1.4473743	-5.1593191
H	3.0236218	0.1359862	-5.1508799
C	-4.2884036	-3.3983455	-0.3096095
H	-4.4370064	-4.4319953	0.0377726
H	-5.2642363	-2.9964642	-0.6219898
C	-0.6488816	-1.7397658	-3.0534316
H	-0.3873858	-1.0836856	-2.2097248
H	0.2120726	-2.3751508	-3.2954090
H	-0.9234573	-1.1331632	-3.9257830
O	4.8861088	1.8317878	-1.3096875
O	4.3535293	-0.5781320	-2.8967216
C	6.1097995	2.5576908	-1.2073376
H	6.1520047	3.1928282	-2.0990476
H	6.1271590	3.1911639	-0.3050689
H	6.9797295	1.8808992	-1.1976141
C	5.0071054	-0.9691381	-4.1033439
H	5.9166112	-1.4932079	-3.7897650
H	4.3788338	-1.6513280	-4.6999557
H	5.2806477	-0.0932855	-4.7136689
C	-0.7645452	2.8391905	-0.6678572
C	-0.5545369	4.2152370	-0.4919992
C	-1.9947593	2.4096206	-1.1946363
C	-1.5458527	5.1353232	-0.8431649
H	0.3842943	4.5780536	-0.0735642
C	-2.9836889	3.3284048	-1.5452143
H	-2.1745316	1.3400255	-1.3253555
C	-2.7612120	4.6964713	-1.3712478
H	-1.3617682	6.2023328	-0.7043768
H	-3.9339605	2.9735914	-1.9482700
H	-3.5342506	5.4171782	-1.6429307
C	1.6639802	2.4762761	0.8497434
C	2.5455623	3.4362235	0.3262130
C	1.6435255	2.2364564	2.2307838
C	3.3812198	4.1566942	1.1795646
H	2.5945769	3.6017584	-0.7517922
C	2.4858856	2.9561734	3.0807871
H	0.9671814	1.4768626	2.6293922
C	3.3512190	3.9194983	2.5574684
H	4.0629466	4.9029308	0.7671177
H	2.4717004	2.7559132	4.1534150
H	4.0099738	4.4810480	3.2220436
C	1.2354064	-2.3880944	2.1176945
C	1.8580458	-3.6337616	2.2989977
C	0.5372745	-1.8092835	3.1894722
C	1.7796995	-4.2865273	3.5304686

H	2.4057709	-4.0969113	1.4769894	H	-0.4407462	-4.6682799	-3.8333076
C	0.4606176	-2.4649834	4.4189481	H	-2.3382908	-6.1324043	-2.4186936
H	0.0346744	-0.8490708	3.0468022	C	-1.6761873	-3.1554333	-1.2201020
C	1.0799189	-3.7052028	4.5914044	N	-2.3220653	-4.3419023	-1.1894590
H	2.2661829	-5.2548247	3.6598725	N	-0.8727397	-3.1935871	-2.3073760
H	-0.0928684	-2.0059220	5.2397910	C	-3.1329444	-3.2306800	0.7835171
H	1.0151704	-4.2214558	5.5507118	C	-2.4947110	-3.6619228	2.1105487
C	1.5162192	-2.8828814	-0.6748591	H	-1.5080084	-4.1280919	1.9529410
C	2.5997974	-2.9727713	-1.5588010	H	-3.1186309	-4.3869734	2.6578939
C	0.5294882	-3.8851525	-0.7064365	H	-4.1163662	-2.7888530	1.0055698
C	2.6723916	-4.0195565	-2.4831725	P	1.3659863	-1.1442355	0.9469299
H	3.3995516	-2.2346023	-1.5256378	P	0.2471466	1.6393477	-0.3724129
C	0.6123025	-4.9361989	-1.6171414	C	2.8256933	-0.0197416	1.0877205
H	-0.3052373	-3.8444036	-0.0048175	C	3.2666628	0.7780723	0.0094440
C	1.6781294	-4.9988539	-2.5225929	C	3.4367921	0.1098244	2.3468838
H	3.5231283	-4.0755980	-3.1651992	C	4.3110699	1.7109740	0.2410773
H	-0.1581682	-5.7094670	-1.6221861	C	4.4720670	1.0174907	2.5424235
H	1.7411426	-5.8186263	-3.2400487	H	3.0962218	-0.4977096	3.1825123
C	-5.4647842	0.7001753	0.1432440	C	4.9126858	1.8259177	1.4983439
C	-6.6521042	0.6015854	-0.4589552	H	4.9367801	1.1050289	3.5257430
H	-6.7353442	0.3848047	-1.5248082	H	5.7110444	2.5456793	1.6696204
H	-7.5875754	0.7248500	0.0929048	C	1.4361286	1.2091809	-1.7158469
C	-5.2870380	0.9554752	1.6117747	C	1.0229996	1.2466103	-3.0575746
H	-6.2595039	1.0840925	2.1094935	C	2.7158948	0.7218881	-1.3789393
H	-4.7581292	0.1200797	2.0921337	C	1.8662728	0.7851641	-4.0639773
H	-4.5380372	0.5654235	-0.4226031	H	0.0425188	1.6428047	-3.3170261
N	-4.4712011	2.1440275	1.8771484	C	3.5578570	0.2635200	-2.4232281
C	-4.9148799	3.4411970	1.6884912	C	3.1291205	0.2818892	-3.7564137
C	-3.8886781	4.2602227	2.0493960	H	1.5412183	0.8233217	-5.1052283
H	-5.9061993	3.6642304	1.3133504	H	3.7800134	-0.0707234	-4.5545732
N	-2.8445032	3.4455798	2.4440405	C	-3.3622040	-4.4474208	-0.1509034
H	-3.8118097	5.3405366	2.0534165	H	-3.2681637	-5.4173513	0.3611403
C	-1.5568916	3.9164653	2.9346165	H	-4.3433400	-4.4149274	-0.6486868
H	-1.4071187	3.5906625	3.9714828	C	0.0087900	-2.1114107	-2.7261784
H	-0.7467162	3.5111674	2.3186029	H	-0.0382177	-1.3220356	-1.9602607
H	-1.5394653	5.0102051	2.8807677	H	1.0417703	-2.4730323	-2.8028438
C	-3.1872336	2.1299167	2.3387035	H	-0.3178870	-1.7096329	-3.6940572
B	-2.2568883	0.8928855	2.6610690	O	4.6469746	2.4902598	-0.8241104
H	-2.8726036	-0.1414830	2.7973917	O	4.7868531	-0.1822309	-2.0381336
H	-1.4699153	0.8071658	1.6482249	C	5.6999467	3.4380475	-0.6593133
H	-1.5138695	1.1361619	3.5953292	H	5.8014665	3.9385583	-1.6286342
VIIb.xyz				H	5.4512362	4.1836494	0.1139696
121				H	6.6502175	2.9429578	-0.4008228
Energy = -3226.386176385				C	5.6939982	-0.6264256	-3.0458818
Rh	-0.6138174	-0.2173161	0.4725071	H	6.6050738	-0.9210314	-2.5135916
H	-2.7859257	-1.2378910	-0.5976845	H	5.2936457	-1.4951225	-3.5948612
H	-2.3319131	-2.7927803	2.7629560	H	5.9301348	0.1810906	-3.7576360
B	-2.1903198	-2.1678851	-0.0866646	C	-1.0741327	2.6022261	-1.2452520
H	-1.2573701	-1.8547267	0.7587908	C	-1.1369003	4.0026619	-1.2522110
C	-1.0143019	-4.4141048	-2.9494636	C	-2.0845605	1.8817944	-1.9081661
C	-1.9397820	-5.1395553	-2.2471239	C	-2.1809954	4.6655633	-1.9046030
				H	-0.3747114	4.5878512	-0.7377955

C	-3.1201961	2.5438794	-2.5665186	H	-5.1860079	4.7798595	0.6996723
H	-2.0587533	0.7888814	-1.8881100	C	-2.7534314	4.0789114	1.8624026
C	-3.1742006	3.9406229	-2.5640037	H	-3.0120470	4.3662512	2.8907086
H	-2.2116371	5.7568991	-1.8985149	H	-1.8073451	3.5320077	1.8679837
H	-3.8936717	1.9685238	-3.0785185	H	-2.6490226	4.9759875	1.2417855
H	-3.9874698	4.4594846	-3.0739897	C	-3.7819924	1.8706495	1.2656263
C	1.1139395	2.9193893	0.6170683	B	-2.6219477	0.8850127	1.7291783
C	1.8781267	3.9315893	0.0129328	H	-3.0787073	-0.1282302	2.2150649
C	0.9801861	2.8966062	2.0120228	H	-2.1747235	0.6189234	0.5385933
C	2.4792117	4.9168917	0.7964189	H	-1.8286280	1.4482564	2.4489320
H	2.0209379	3.9348289	-1.0693650				
C	1.5892486	3.8803378	2.7939122	VIIc.xyz			
H	0.4083751	2.0899505	2.4759581	121			
C	2.3341953	4.8941763	2.1871724	Energy = -3226.392656199			
H	3.0677798	5.7032404	0.3199497	Rh	-0.8214754	-0.0861804	0.1105257
H	1.4893556	3.8483246	3.8801283	P	0.4345750	-1.7062166	0.9957764
H	2.8105942	5.6627874	2.7981268	P	0.9712681	0.8842083	-0.7923327
C	1.1633210	-1.8154262	2.6556432	C	0.4402102	1.8347910	-2.2896939
C	1.9082883	-2.9080842	3.1266762	C	0.9501794	3.0894338	-2.6512070
C	0.2311155	-1.2051875	3.5097963	C	-0.5269810	1.2355690	-3.1186450
C	1.7162860	-3.3834122	4.4253256	C	0.5238798	3.7175446	-3.8264084
H	2.6414489	-3.3912611	2.4794813	H	1.6842555	3.5866732	-2.0171808
C	0.0422632	-1.6818206	4.8074763	C	-0.9490736	1.8614132	-4.2921616
H	-0.3594786	-0.3622611	3.1395088	H	-0.9422223	0.2654732	-2.8320167
C	0.7823471	-2.7738153	5.2670631	C	-0.4193861	3.1040929	-4.6536232
H	2.2996468	-4.2349654	4.7797251	H	0.9388944	4.6904033	-4.0970751
H	-0.6918919	-1.2020567	5.4569626	H	-1.6888207	1.3738836	-4.9298116
H	0.6311750	-3.1514704	6.2797054	H	-0.7424651	3.5921633	-5.5746949
C	2.0092719	-2.6256079	0.0600398	C	2.2184509	-0.2892369	-1.4884909
C	3.2418132	-2.6412822	-0.6053228	C	3.0562812	-1.0000225	-0.6063358
C	1.2208647	-3.7895033	0.0563912	C	2.2654109	-0.5503598	-2.8669151
C	3.6572012	-3.7844793	-1.2951027	C	3.9276806	-1.9821920	-1.1378718
H	3.8924872	-1.7686795	-0.5791301	C	3.1346486	-1.5155358	-3.3672765
C	1.6443763	-4.9336977	-0.6169685	H	1.6300574	0.0036316	-3.5551452
H	0.2750609	-3.8013569	0.5996655	C	3.9638433	-2.2392595	-2.5133985
C	2.8599057	-4.9301794	-1.3098511	H	3.1673579	-1.7101348	-4.4405450
H	4.6212396	-3.7817765	-1.8076726	H	4.6297226	-2.9981129	-2.9201175
H	1.0241525	-5.8315321	-0.6002732	C	2.0350191	2.0583903	0.1430869
H	3.1911637	-5.8240989	-1.8409087	C	3.2388935	2.5549652	-0.3837977
C	-5.5498006	-0.1579270	-1.0115184	C	1.6480850	2.4308900	1.4357759
C	-6.6825304	-0.5737358	-1.5821718	C	4.0167606	3.4431988	0.3595114
H	-6.7323228	-0.8144560	-2.6446820	H	3.5827894	2.2237729	-1.3654244
H	-7.6013335	-0.7013384	-1.0039747	C	2.4384937	3.3016470	2.1867365
C	-5.4122730	0.1398721	0.4516476	H	0.7415335	1.9848874	1.8495370
H	-6.3662208	-0.0195598	0.9763145	C	3.6178708	3.8192937	1.6457080
H	-4.6504360	-0.5065526	0.9094359	H	4.9476623	3.8291159	-0.0599557
H	-4.6360909	-0.0452536	-1.6018257	H	2.1507636	3.5591884	3.2081107
N	-4.9716952	1.5193467	0.7016287	H	4.2360756	4.5017779	2.2316311
C	-5.7167267	2.6394812	0.3859162	C	0.9556910	-3.1736326	0.0236339
C	-4.9780257	3.7188148	0.7658475	C	1.9097518	-4.0783206	0.5190827
H	-6.6881510	2.5717988	-0.0887348	C	0.3831623	-3.3967430	-1.2349189
N	-3.7976689	3.2314659	1.2977738	C	2.2631994	-5.2017285	-0.2283869

C	3.2139414	-1.0042026	-2.2226619	H	6.8178571	1.9619746	-0.1512618
C	1.5485282	0.0356872	-3.6268353	H	7.3924735	0.3781473	-0.7892994
H	0.2866220	1.5050291	-2.6929636	C	4.6708087	-2.7167220	-3.0341862
C	2.5880352	-0.8776123	-3.4690672	H	5.4727183	-3.3308757	-2.6098043
H	1.0623573	0.1294217	-4.5989912	H	3.8574201	-3.3704452	-3.3896784
H	2.9027814	-1.4891591	-4.3126591	H	5.0682019	-2.1271283	-3.8765905
C	2.4512093	2.3638805	0.9229955	C	-5.5790039	-0.6785322	3.6879330
C	3.3311641	3.1001297	0.1123061	C	-4.7817369	0.1186810	4.4551709
C	2.6738051	2.3075866	2.3041416	C	-3.5987403	-0.4708080	2.6254307
C	4.4032836	3.7843077	0.6844940	N	-4.8397401	-1.0312831	2.5758758
H	3.1842460	3.1240987	-0.9691556	H	-6.5945423	-1.0228294	3.8421946
C	3.7542675	2.9825135	2.8734961	H	-4.9688371	0.6041262	5.4055657
H	2.0112105	1.6985494	2.9219492	N	-3.5748796	0.2317095	3.7933277
C	4.6165772	3.7269388	2.0653031	C	-2.4362241	1.0212742	4.2808101
H	5.0789795	4.3594507	0.0488291	H	-1.5413504	0.3806820	4.2759773
H	3.9284088	2.9200486	3.9488315	H	-2.6680469	1.2740223	5.3270994
H	5.4596429	4.2581967	2.5101695	C	-2.1987926	2.2611820	3.4665895
C	1.0566491	-2.6058154	-0.0381892	H	-3.0885372	2.8211620	3.1627840
C	2.0388431	-3.5901108	-0.2420928	C	-0.9771315	2.6874630	3.1337426
C	-0.0391944	-2.5264283	-0.9078424	H	-0.0835172	2.1368853	3.4346915
C	1.9077711	-4.4944350	-1.2959094	H	-0.8261157	3.6048395	2.5648468
H	2.9135019	-3.6370570	0.4095823	C	-5.3215927	-1.9068802	1.5095263
C	-0.1533302	-3.4187289	-1.9745659	B	-2.4681569	-0.6265706	1.5287700
H	-0.7820800	-1.7387367	-0.7700659	H	-2.7712582	-1.4727861	0.7232888
C	0.8150813	-4.4070299	-2.1651584	H	-2.2608691	0.4782445	0.9592457
H	2.6690354	-5.2623199	-1.4461725	H	-1.4147512	-1.0098135	2.1820983
H	-0.9928925	-3.3179683	-2.6641022	H	-4.7044143	-2.8111253	1.4549120
H	0.7249193	-5.1074566	-2.9976414	H	-6.3586214	-2.1809605	1.7306358
C	0.9791038	-2.3875382	2.8837371	H	-5.2739082	-1.3926360	0.5433698
C	0.9137707	-1.6910548	4.1043686	H	-1.7182201	-0.2990733	-2.2581119
C	0.7866384	-3.7751779	2.8815975	B	-2.5833544	-0.6446012	-3.0582924
C	0.6839062	-2.3711882	5.2987323	H	-2.0790999	-1.3569710	-3.9147549
H	1.0388120	-0.6052493	4.1052742	C	-3.2721883	0.6674347	-3.6365502
C	0.5419624	-4.4533069	4.0797392	C	-3.9359320	-1.2763181	-2.3153667
H	0.8168078	-4.3300046	1.9435378	N	-4.4702890	0.9217928	-3.0622928
C	0.4940877	-3.7573217	5.2881348	N	-3.0650279	1.6804722	-4.5118433
H	0.6490384	-1.8201410	6.2403789	C	-4.6716898	-2.2892987	-3.1995304
H	0.3896255	-5.5338094	4.0641534	H	-3.6730264	-1.7532778	-1.3580789
H	0.3066101	-4.2913332	6.2210802	C	-4.8339329	-0.0535147	-2.0182581
C	2.9967142	-0.9739302	1.3203565	C	-5.0244001	2.0868026	-3.5523690
C	3.7821435	-1.1387707	2.4724969	C	-4.1348339	2.5681511	-4.4754946
C	3.5399082	-0.3723649	0.1668257	C	-1.8648370	1.8190927	-5.3220594
C	5.1025451	-0.6988744	2.4853259	H	-4.0286868	-3.1557246	-3.4089132
H	3.3665895	-1.6221720	3.3548682	H	-4.9368536	-1.8491279	-4.1749721
C	4.8790490	0.0880546	0.2137576	H	-5.6033132	-2.6628126	-2.7388895
C	5.6544877	-0.0753282	1.3684047	H	-5.9164935	-0.2552253	-2.0709786
H	5.7122804	-0.8383733	3.3794876	H	-4.6046493	0.3988221	-1.0379465
H	6.6833719	0.2785803	1.4006460	H	-5.9881497	2.4691655	-3.2377436
O	5.3247321	0.7046122	-0.9129977	H	-4.1821900	3.4444540	-5.1119765
O	4.2280947	-1.8747206	-1.9714924	H	-1.3374480	0.8588471	-5.3064177
C	6.6644281	1.1940521	-0.9275829	H	-2.1332802	2.0723075	-6.3554219
H	6.8042912	1.6428781	-1.9171118	H	-1.2117062	2.6019587	-4.9110621

TsVII_IS.xyz

121

Energy = -3226.367425658

Rh	-0.4206045	0.9582048	0.2774907
P	0.7863249	-0.3255098	1.5535737
P	1.2981257	1.2568772	-1.1225195
C	0.5651498	1.8818276	-2.6881899
C	1.0462321	3.0171400	-3.3594491
C	-0.5905925	1.2389624	-3.1706911
C	0.3891904	3.4935840	-4.4958840
H	1.9322242	3.5380339	-2.9960574
C	-1.2300193	1.7092038	-4.3182062
H	-0.9935397	0.3584827	-2.6618774
C	-0.7463296	2.8400870	-4.9811212
H	0.7736630	4.3773796	-5.0078934
H	-2.1005327	1.1701754	-4.6970453
H	-1.2487428	3.2091357	-5.8768997
C	2.1197864	-0.3349098	-1.5339205
C	3.0056038	-0.9022603	-0.5955165
C	1.7667210	-1.0387847	-2.6945043
C	3.5217355	-2.1961870	-0.8477748
C	2.2880577	-2.3094847	-2.9203473
H	1.0845725	-0.6012225	-3.4206730
C	3.1591142	-2.8966335	-2.0047103
H	2.0081659	-2.8549504	-3.8228086
H	3.5487120	-3.8952434	-2.1941340
C	2.6914928	2.3991444	-0.7795857
C	3.8104440	2.4446244	-1.6272609
C	2.6335496	3.2517770	0.3308863
C	4.8426417	3.3479585	-1.3743790
H	3.8786875	1.7624371	-2.4767943
C	3.6725320	4.1472984	0.5878273
H	1.7795563	3.1789332	1.0086075
C	4.7751788	4.2006030	-0.2679783
H	5.7057913	3.3834107	-2.0415724
H	3.6260348	4.7981280	1.4624462
H	5.5863706	4.9033436	-0.0703689
C	0.7829445	-2.1283129	1.2232497
C	1.6841157	-2.9730700	1.8945266
C	-0.1273893	-2.6714268	0.3063602
C	1.6559131	-4.3484305	1.6658518
H	2.4227258	-2.5523944	2.5792812
C	-0.1383236	-4.0477914	0.0709044
H	-0.8006081	-2.0116445	-0.2472352
C	0.7453944	-4.8876541	0.7521509
H	2.3552406	-4.9988283	2.1944527
H	-0.8330270	-4.4619017	-0.6612807
H	0.7320119	-5.9628758	0.5648705
C	0.1287578	-0.1676453	3.2744449
C	-0.2083621	1.1187012	3.7313083
C	-0.0737107	-1.2624820	4.1268556

C	-0.7142621	1.3099810	5.0166643
H	-0.0739990	1.9682268	3.0569618
C	-0.5899955	-1.0705747	5.4124101
H	0.1654166	-2.2710156	3.7890648
C	-0.9073159	0.2128250	5.8622257
H	-0.9626570	2.3166200	5.3575680
H	-0.7409331	-1.9322529	6.0650262
H	-1.3026597	0.3583902	6.8689932
C	2.5753968	0.0659473	1.7253045
C	3.0533178	0.7065108	2.8796571
C	3.4404003	-0.1925923	0.6429339
C	4.3887302	1.0914194	2.9597353
H	2.3878546	0.8937557	3.7207107
C	4.7899928	0.2269881	0.7408685
C	5.2598702	0.8639010	1.8965309
H	4.7590747	1.5798451	3.8625323
H	6.2973880	1.1847716	1.9703130
O	5.5555746	-0.0082416	-0.3561435
O	4.3501140	-2.6935268	0.1101238
C	6.9247287	0.3920047	-0.3214102
H	7.3406680	0.1058030	-1.2935804
H	7.0185535	1.4824713	-0.1885680
H	7.4750023	-0.1273736	0.4799221
C	4.8999862	-3.9948857	-0.0868532
H	5.5313302	-4.1847053	0.7882330
H	4.1075164	-4.7595689	-0.1400519
H	5.5165234	-4.0372394	-0.9994626
C	-4.0978520	2.1065299	3.9118379
C	-3.8236805	3.2463135	3.2147606
C	-3.2925781	1.4924718	1.8970703
N	-3.7733376	1.0451431	3.0869060
H	-4.4917483	1.9640016	4.9107507
H	-3.9481438	4.2891964	3.4809780
N	-3.3330831	2.8479169	1.9840230
C	-2.9022899	3.7386711	0.9049166
H	-3.2623422	4.7453059	1.1686984
H	-3.4094809	3.4370332	-0.0225864
C	-1.4143894	3.7706729	0.6968784
H	-0.7969182	3.8699866	1.5946775
C	-0.8613581	3.8474055	-0.5236435
H	-1.4639379	3.7806256	-1.4323192
H	0.2031551	4.0299568	-0.6556953
C	-3.8612018	-0.3634809	3.4521781
B	-2.7613990	0.6105921	0.6989367
H	-3.4404317	-0.3841910	0.5529903
H	-2.6292855	1.2391938	-0.3454389
H	-1.6781323	0.0254794	1.1022423
H	-2.8604545	-0.7570708	3.6739413
H	-4.4966348	-0.4605154	4.3388546
H	-4.2936359	-0.9274210	2.6176028
H	-1.9111475	-1.2894987	-1.9710714
B	-2.7741132	-1.7101161	-2.7446755

H -2.6122979 -1.2360635 -3.8601493
C -4.1832690 -1.3814182 -2.0774067
C -2.9114890 -3.3676488 -2.6904516
N -4.6936889 -2.4453510 -1.4174651
N -5.0706105 -0.3757137 -1.8897665
C -3.5138972 -3.9448384 -3.9769432
H -1.9382697 -3.8495047 -2.5065896
C -3.8368086 -3.6435280 -1.4830792
C -5.8804278 -2.1254541 -0.7929387
C -6.1245344 -0.8127654 -1.0954367
C -4.9150337 0.9634369 -2.4295105

H -2.8584988 -3.7390573 -4.8345725
H -4.4880382 -3.4799451 -4.2031355
H -3.6701275 -5.0358340 -3.9213629
H -4.4703049 -4.5388765 -1.5871323
H -3.2772888 -3.7180513 -0.5360122
H -6.4627315 -2.8364396 -0.2188411
H -6.9591370 -0.1713957 -0.8362545
H -3.9850440 0.9901889 -3.0067734
H -5.7603429 1.2153175 -3.0842221
H -4.8503363 1.6954458 -1.6128886